

Fig. S3

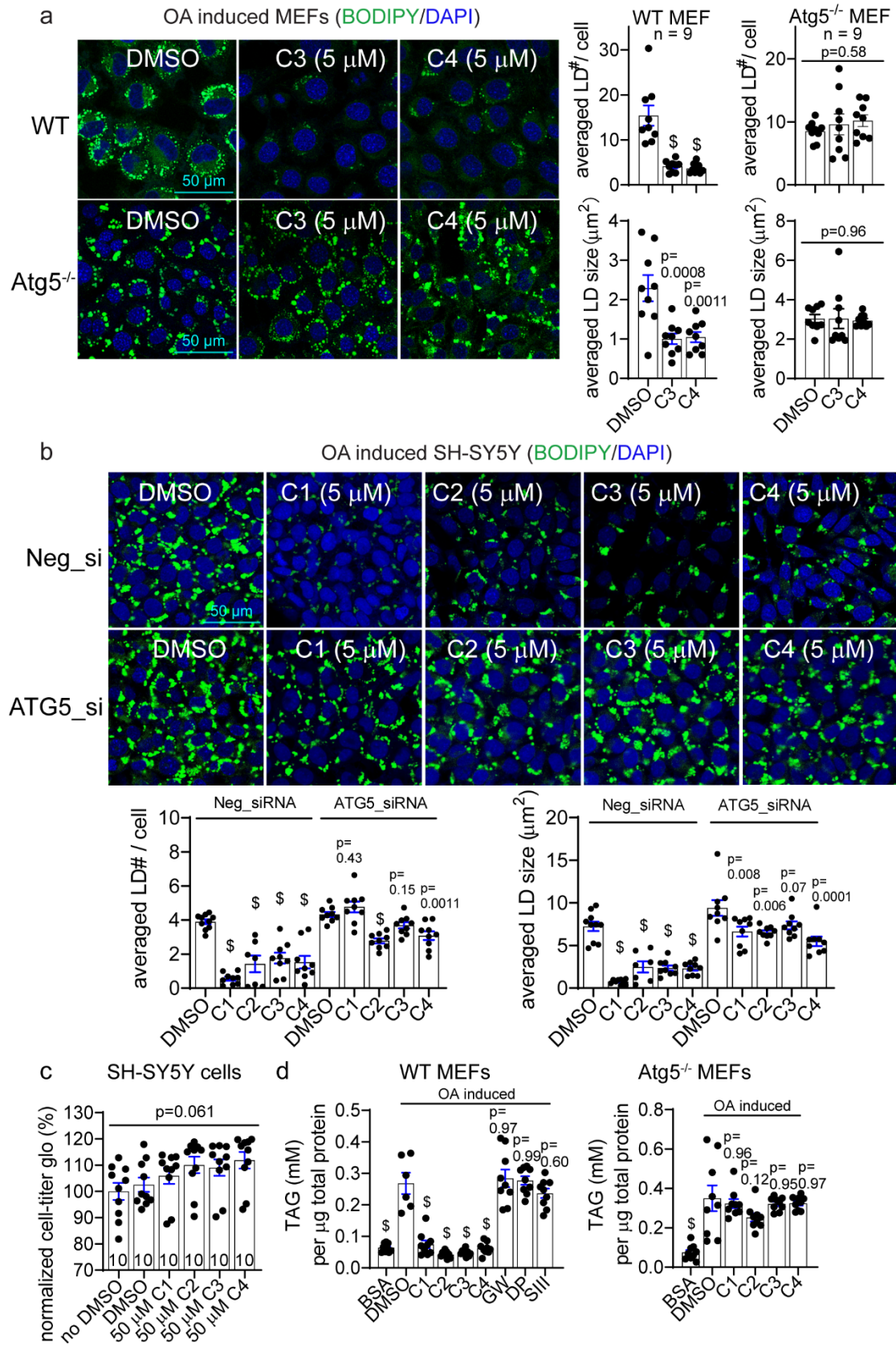


Fig. S3 The LD-ATTECs C3 and C4 reduced the OA-induced LDs in an autophagy dependent manner.

a Representative images and quantifications of OA-induced LDs in wild-type or *Atg5*^{-/-} MEFs treated with indicated compounds (n = 9). **b** Similar to **a**, but in SH-SY5Y cells transfected with the non-targeting control (Neg_si) or *Atg5* targeting (*Atg5_si*) siRNA. **c** Cell viability measurements of compound-treated SH-SY5Y cells by cell-titer glo. Treatment of LD-ATTECs at a very high concentration (50 μM) led to no observable cytotoxicity after 3 days. **d** Measurements of cellular TAG concentrations in the WT or *Atg5*^{-/-} MEFs. For all plots, bars indicate mean and s.e.m.. The statistical analyses were performed by one-way ANOVA and Dunnett's post-hoc tests (the corrected p values compared to the DMSO group, if the ANOVA tests were significant). The n numbers indicate independently plated wells.