

Table S1 Correlations between CHMP4C and clinicopathological characteristics

Characteristics	CHMP4C expression		P value
	low, no. cases	high, no. cases	
Age (years)			
≤70	119	121	0.864
>70	74	71	
Gender			
Female	50	49	1
Male	143	143	
Tumor stage			
I/II	166	146	0.018
III/IV	27	46	

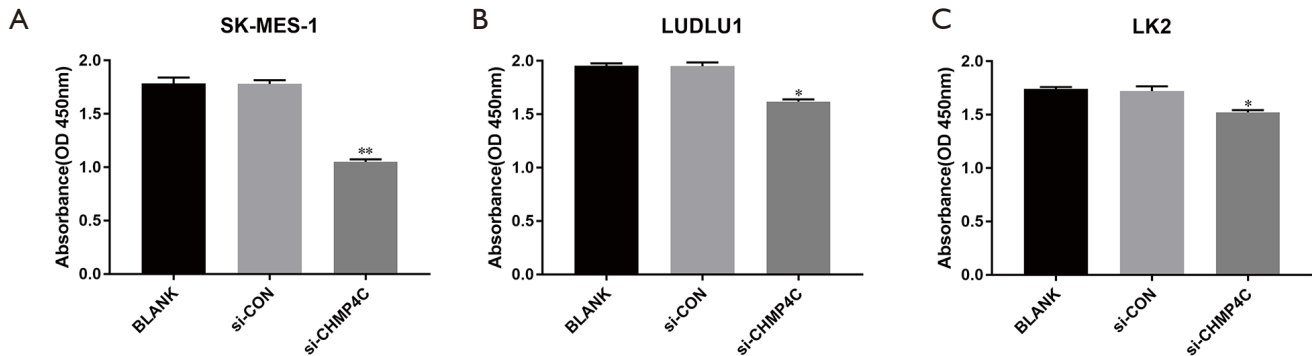


Figure S1 Cell proliferation in LUSC cells measured using Cell Proliferation ELISA BrdU colorimetric assay. (a-c) Histograms of cell proliferation assays for SK-MES-1, LUDLU1 and LK3 cells transfected with si-NC, si-CHMP4C for 48h, respectively. Significant differences are indicated as follows: * $P < 0.05$, ** $P < 0.01$, and *** $P < 0.001$.

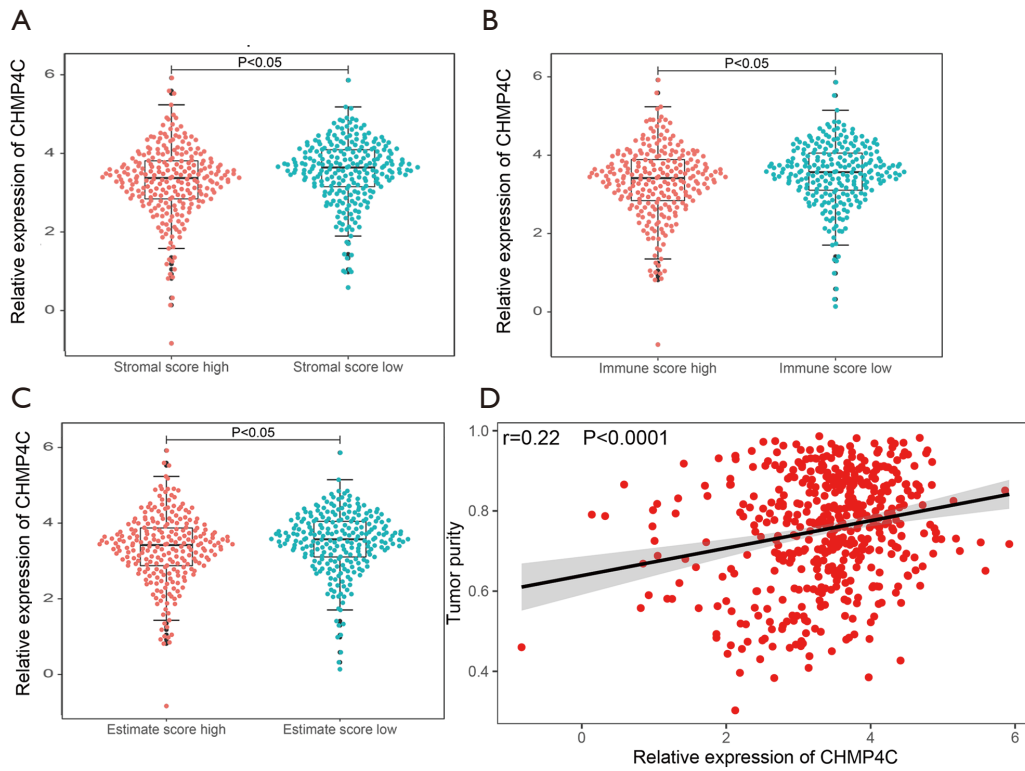


Figure S2 CHMP4C expression is elevated in LUSC samples from TCGA database. (a-c) Analysis of CHMP4C mRNA levels (log₂) in different stromal score, immune score and estimate score (low, high) of LUSC tissues from TCGA database ($P<0.05$). (d) The positive correlation between CHMP4C mRNA expression level (log₂) and tumor purity in TCGA database ($R=0.22$, $P<0.0001$).