

Supporting Information

Biomimetic polydopamine modified silk/curcumin nanofibrous scaffolds for chemo-photothermal therapy of bone tumor

Zhiyuan Meng,^a Yichao Liu,^b Kexiang Xu,^a Xing Sun,^a Qingwen Yu,^a Zhongqing Wu,^a and Zheng Zhao^{*a}

a. State Key Laboratory of Advanced Technology for Materials Synthesis and Processing, Wuhan University of Technology, Wuhan 430070, PR China.

b. Center for Evidence-Based and Translational Medicine, Zhongnan Hospital of Wuhan University.

*** Corresponding author:**

Prof. Zheng Zhao

Tel: +86-27-87651853, E-mail: zhengzhao@whut.edu.cn

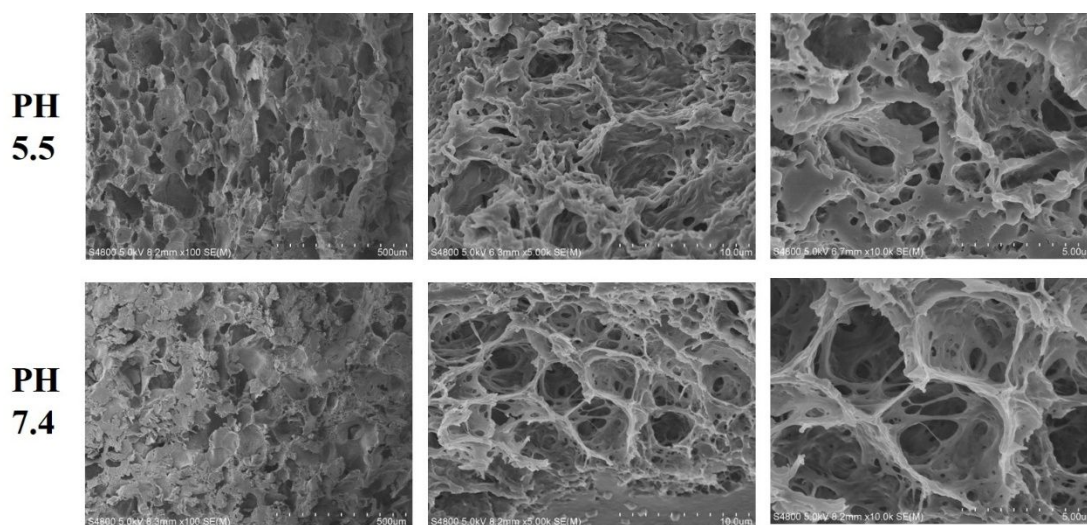


Figure S1. The SEM images of SF/CM-PDA scaffolds after 15 days of drug release in different pH.

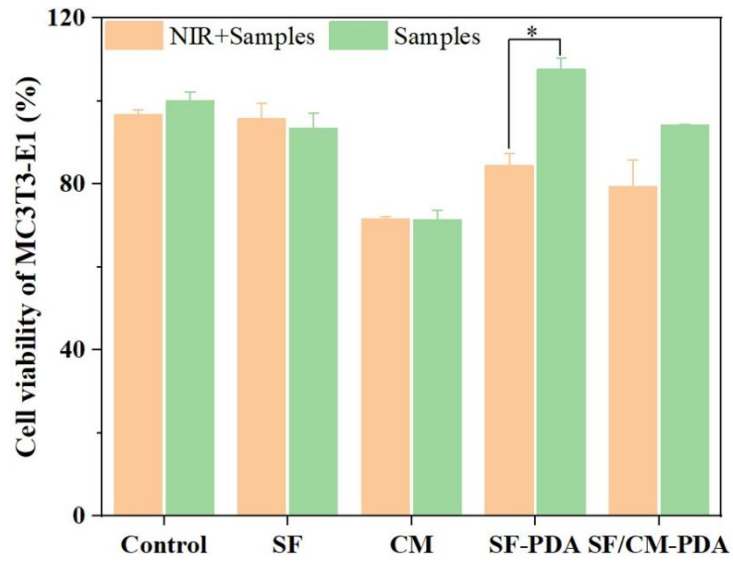


Figure S2. The cell viability of MG-63 cells after being incubated with the SF, SF-PDA, SF/CM-PDA scaffolds, and CM at the same CM concentration level with or without the treatment of NIR laser (808 nm, 1.3 W/cm², 6 min).