

The role and mechanism of NEAT1 in PC gemcitabine resistance

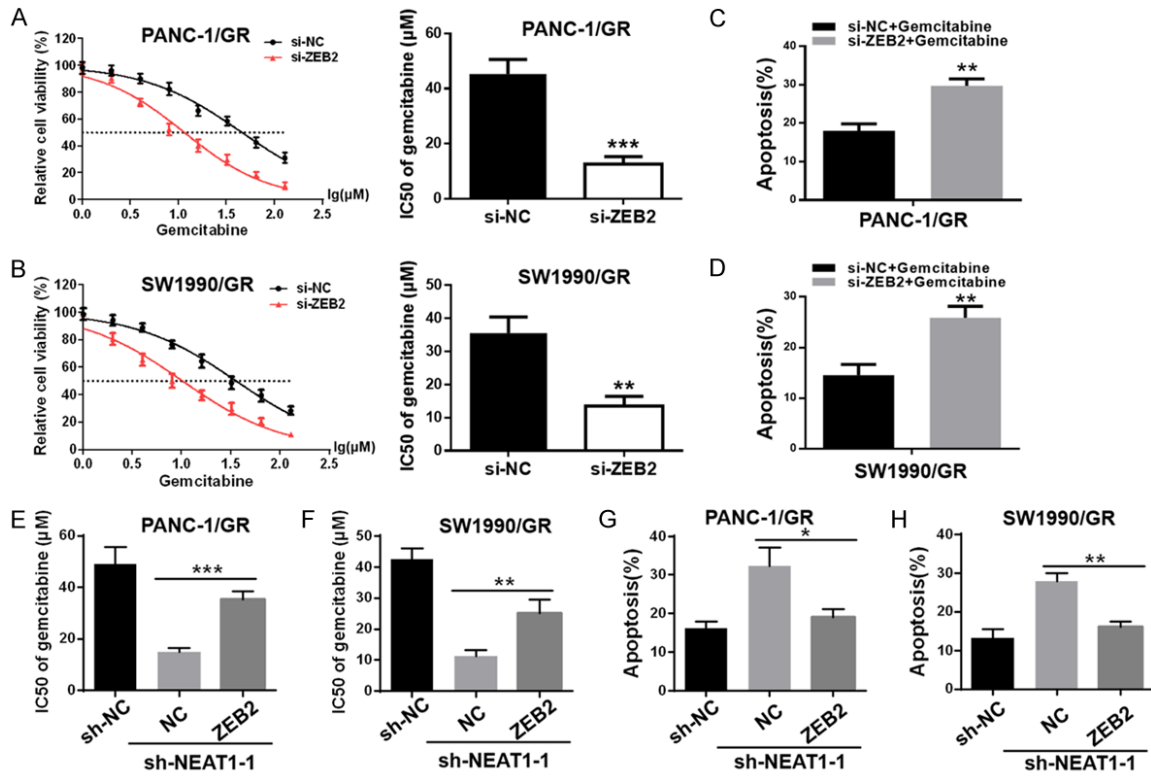


Figure S1. The function of NEAT1 in SW1990/GR and PANC-1/GR cells was dependent on ZEB2. A, B. The MTT assay was used to determine the cytotoxicity of gemcitabine to GR cells after transfection with si-ZEB2 or si-NC. IC₅₀ values of gemcitabine in each group were calculated. C, D. Flow cytometry analysis of gemcitabine induced cell apoptosis in GR cells after transfection with si-ZEB2 or si-NC. Cells in each group were exposed to 5 μM gemcitabine for 48 h. E, F. MTT assay was used to determine the cytotoxicity of gemcitabine to GR cells transfected with NEAT1 shRNA in the presence of ZEB2 overexpression plasmid or NC. IC₅₀ values of gemcitabine in each group were calculated. G, H. Flow cytometry analysis of the gemcitabine-induced cell apoptosis in GR cells transfected with NEAT1 shRNA in the presence of ZEB2 overexpression plasmid or NC. Cells in each group were exposed to 5 μM gemcitabine for 48 h. At least three independent experiments were performed in each group and mean ± SD was used to represent the final result. **P*<0.05, ***P*<0.01, ****P*<0.001.