

Supplementary figures

Figure S1

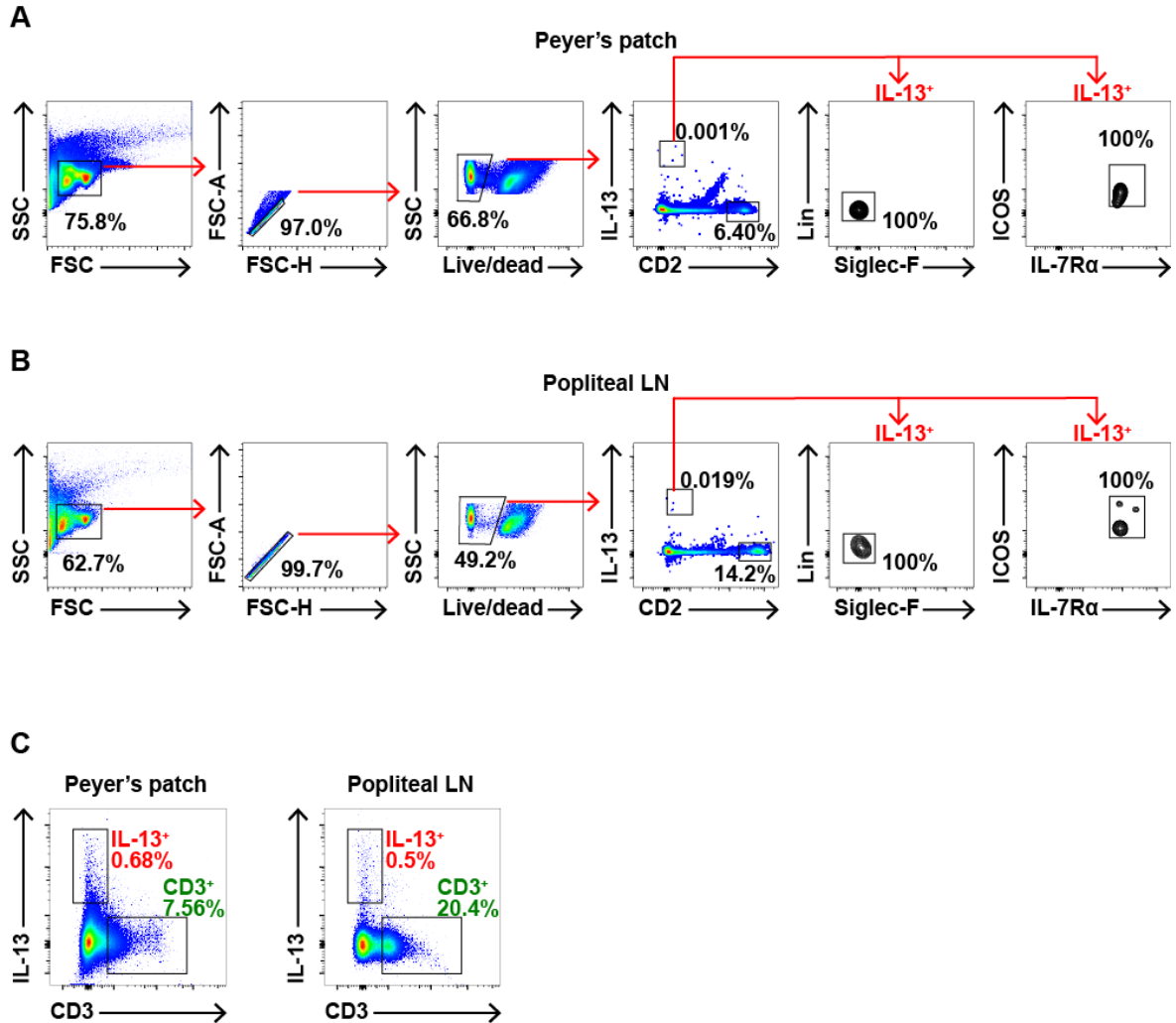


Figure S1. Specificity of IL-13⁺ cells for ILC2s. (A-B) Flow cytometry plots showing proportions of ILC2s (Lin^{neg}Siglec-F^{neg}IL-7Rα⁺ICOS⁺) in CD2^{neg}IL-13⁺ cell populations in (A) PP and (B) popliteal LN. (C) Flow cytometry plots showing proportions of IL-13⁺ cells and CD3⁺ cells, gated on live cells, in PP and popliteal LN.

Figure S2

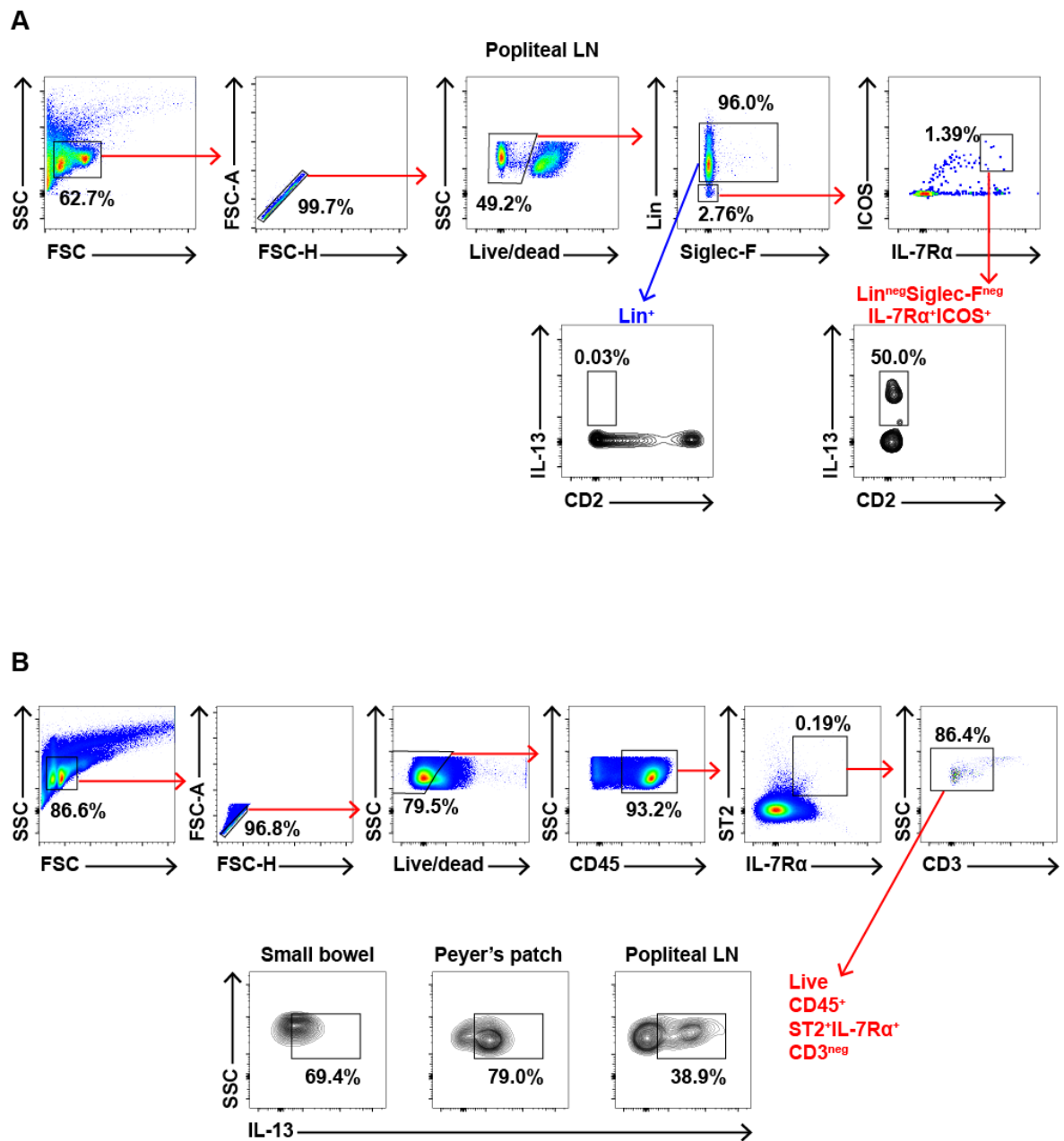


Figure S2. IL-13 expression by ILC2s. (A) Flow cytometry plots showing proportions of IL-13-expressing cells in ILC2 and lineage-positive cell populations. (B) Flow cytometry plots showing proportions of IL-13-expressing ILC2s (CD45⁺ST2⁺IL-7Rα⁺CD3^{neg}) in mucosal and lymphoid tissues.

Figure S3

A

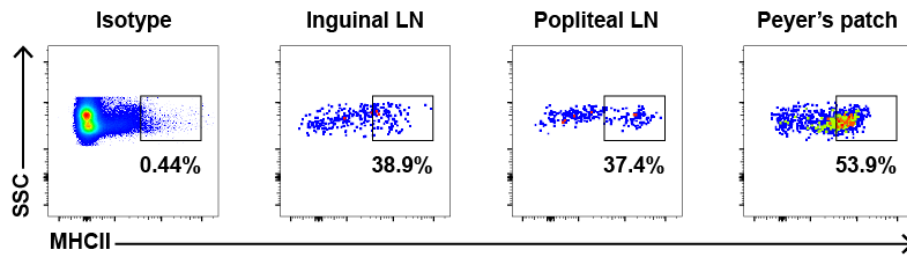


Figure S3. MHCII expression by ILC2s. (A) Flow cytometry plots showing expression of MHCII by ILC2s ($ST2^+IL-7R\alpha^+CD3^{neg}IL-13^+$) in lymphoid organs at baseline.

Figure S4

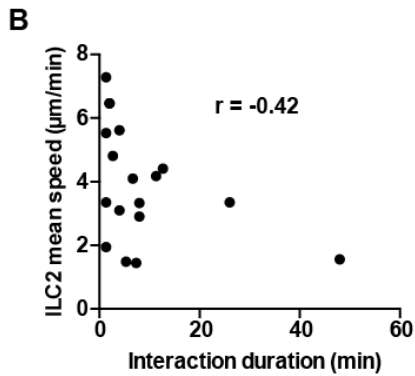
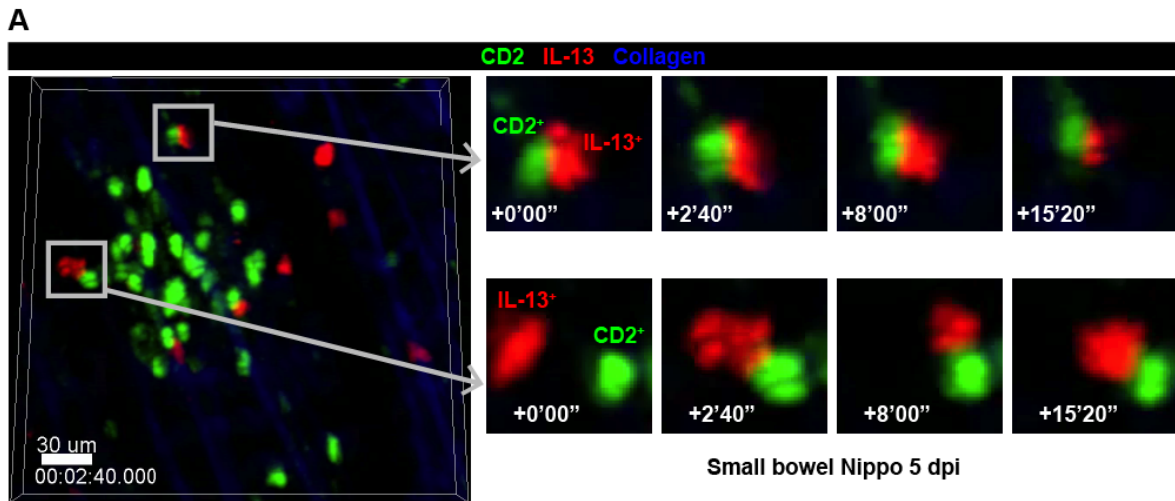


Figure S4. ILC2s interact with T cells in small bowel mucosa following helminth infection. (A) Intravital examples of interactions between IL-13⁺ ILC2s and CD2⁺ T cells in the small bowel mucosa, Nippo 5 dpi; scale bar 30 μ m, Z 16 μ m. (B) Graph showing relationship between ILC2 mean migration speed and ILC2-T cell interaction duration, Spearman correlation $r = -0.42$, $p = 0.08$.

Supplementary movies

Movie S1. PP ILC2s show altered size and movement following helminth infection.

Intravital movies of ILC2s, without and with cell tracks, in PP uninfected and *N. brasiliensis* (5 dpi); scale bar 50 μm , Z 48 μm , movies at 10 fps.

Movie S2. ILC2s occasionally and briefly interact with T cells in PP at baseline.

Intravital example of ILC2-T cell interaction in uninfected PP; scale bar 20 μm , Z 48 μm , movie at 3 fps.

Movie S3. Popliteal LN ILC2s show dynamic changes following type 2 inflammation.

Intravital movies of ILC2s with cell tracks in popliteal LN following PBS treatment or *S. mansoni* egg challenge (1 dpi); scale bar 50 μm , Z 40 μm , movies at 10 fps.

Movie S4. ILC2s occasionally and briefly interact with T cells in popliteal LN at baseline.

Intravital example of ILC2-T cell interaction in PBS-treated popliteal LN; scale bar 20 μm , Z 30 μm , movie at 3 fps.

Movie S5. Small bowel ILC2s show dynamic changes following helminth infection.

Intravital movie of ILC2s, without and with cell tracks, in small bowel mucosa following *N. brasiliensis* infection (5 dpi); scale bar 50 μm , Z 30 μm , movie at 10 fps.

Movie S6. ILC2s interact with T cells in small bowel mucosa following helminth infection.

Intravital examples of ILC2-T cell interactions in small bowel mucosa following *N. brasiliensis* infection (5 dpi); scale bar 30 μm , Z 26 μm , movie at 5 fps.