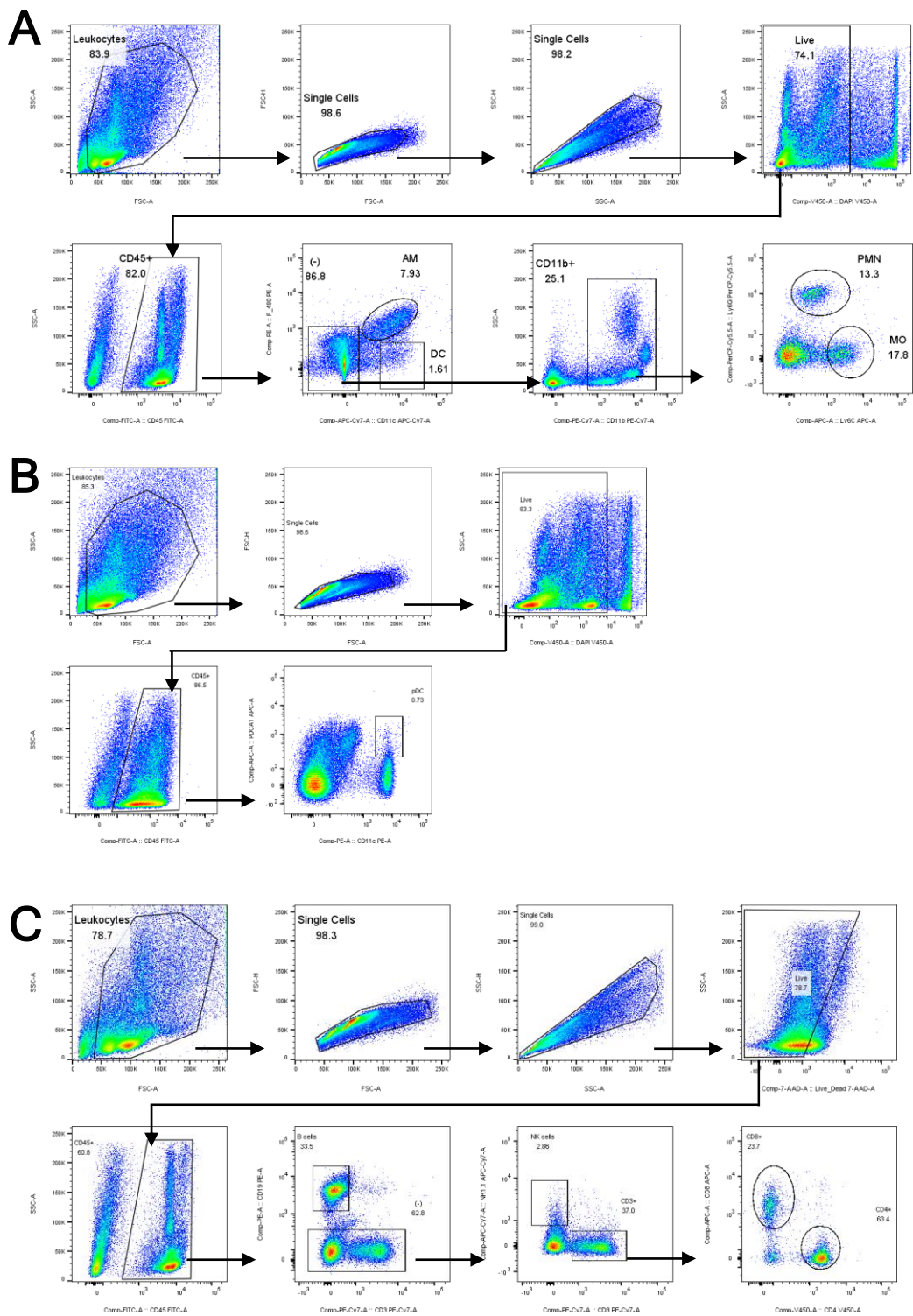
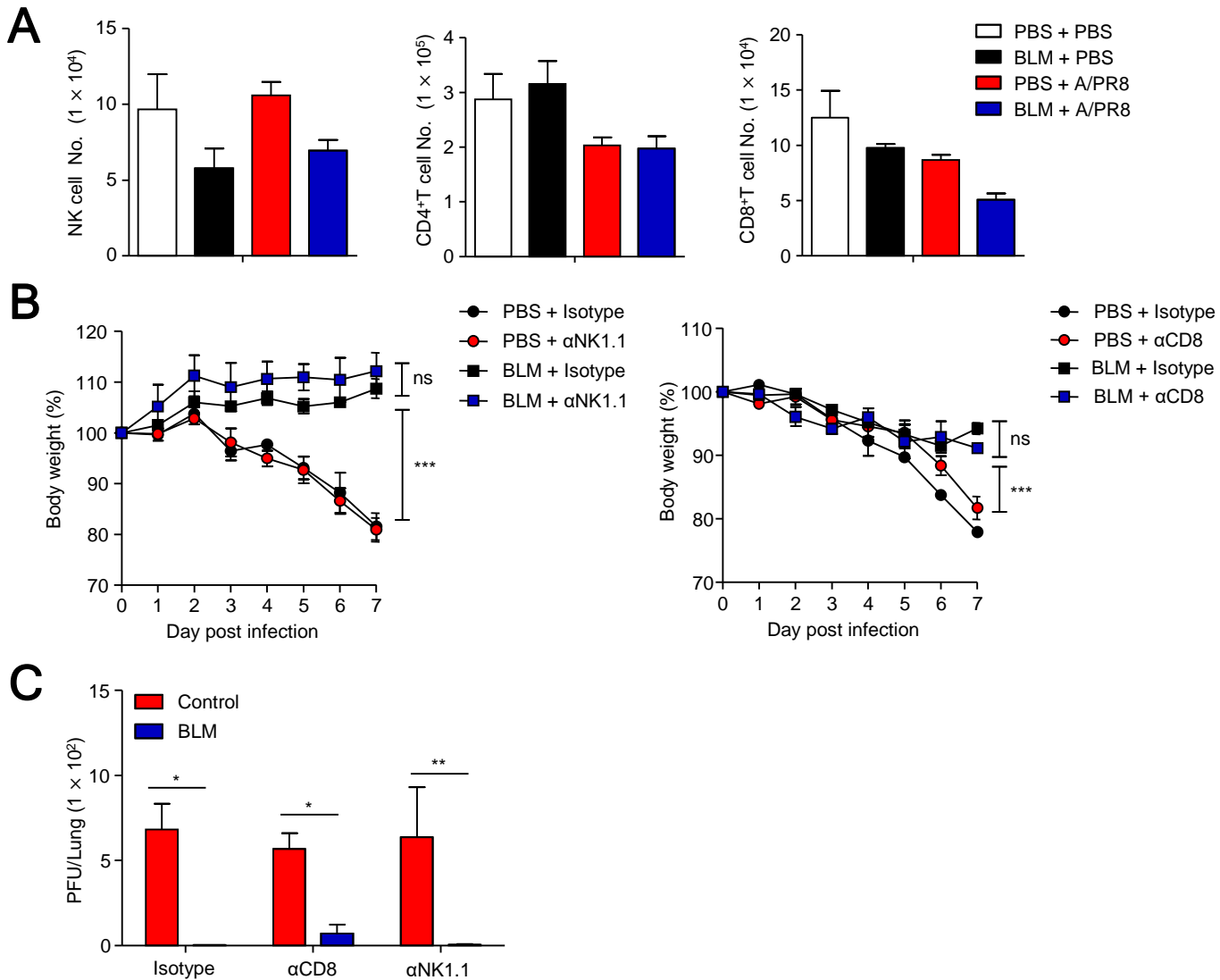


# Supplementary Figure 1.



**Supplementary Figure 1.** Gating strategies for (A) figure 2, (B) figure 6 and (C) Supplementary figure 2 are indicated.

## Supplementary Figure 2.



**Supplementary Figure 2.** Cytotoxicity lymphoid cells were not associated with controlling influenza virus infection. BLM-treated mice were infected intranasally with sub-lethal dose of virus and euthanized 3 days later. (A) FACS analysis of the numbers of NK and CD8<sup>+</sup> T cells in the lungs. (B) NK cells and CD8<sup>+</sup> T cells were depleted from mice by intraperitoneal antibody administration at 8, 4, and 1 day before A/PR8 infection, and body weight was monitored for 7 days. (C) At 7 d.p.i., mouse lungs were extracted, and the PFU assay was performed using the A549 cell line to titrate A/PR8. Data are expressed as the  $\pm$  SEM of representative of 1 experiment. Statistical analysis of data was performed using ANOVA (\* $p < 0.05$ , \*\* $p < 0.01$ , \*\*\* $p < 0.001$ ). ns, not significant.