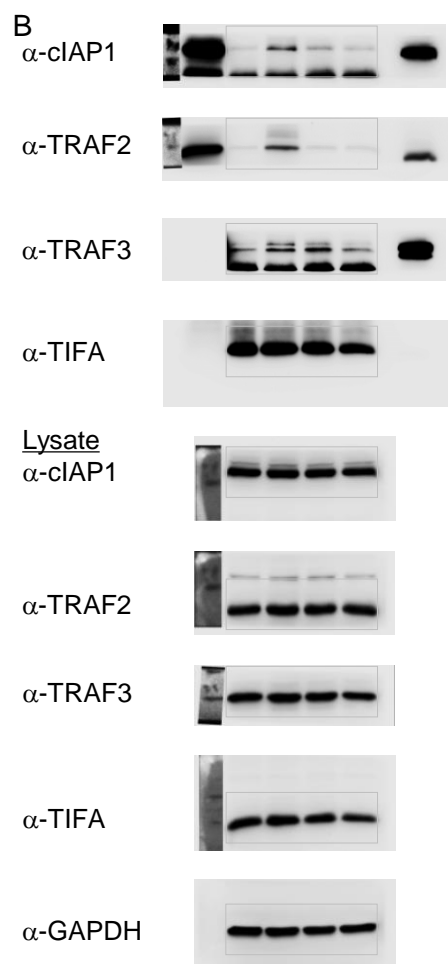
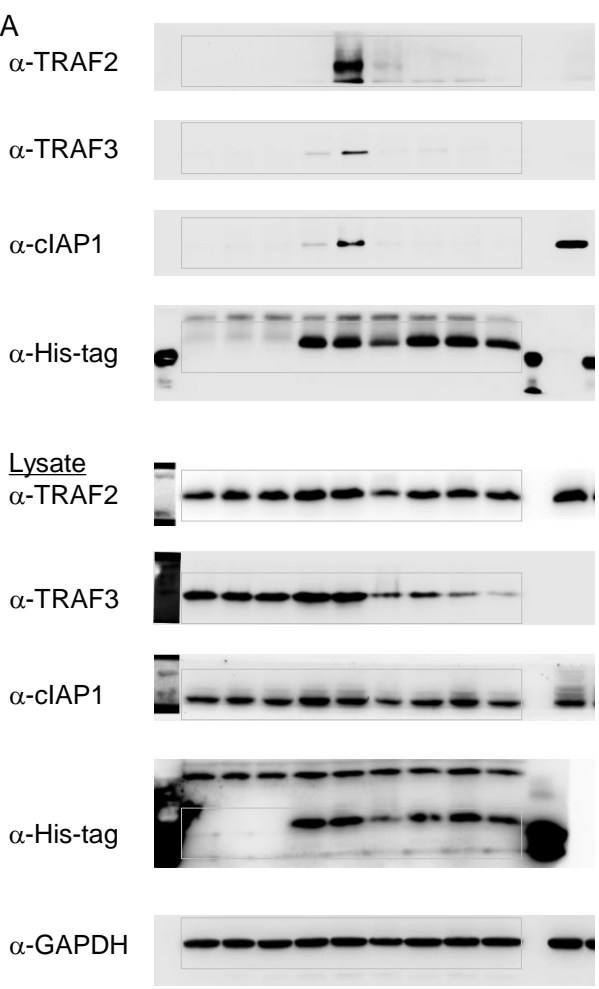


Fig. 3 uncropped immunoblots



Please note that a pre-stained marker was used for blotting, which is not detected in the immunoblots. Therefore, the marker lane was copied to the first exposure of a blot after detection (taken from images of the membrane after transfer). The reason why not all strips contain the marker lane is that a different exposure was finally used for the figure, which had not the marker copied in.

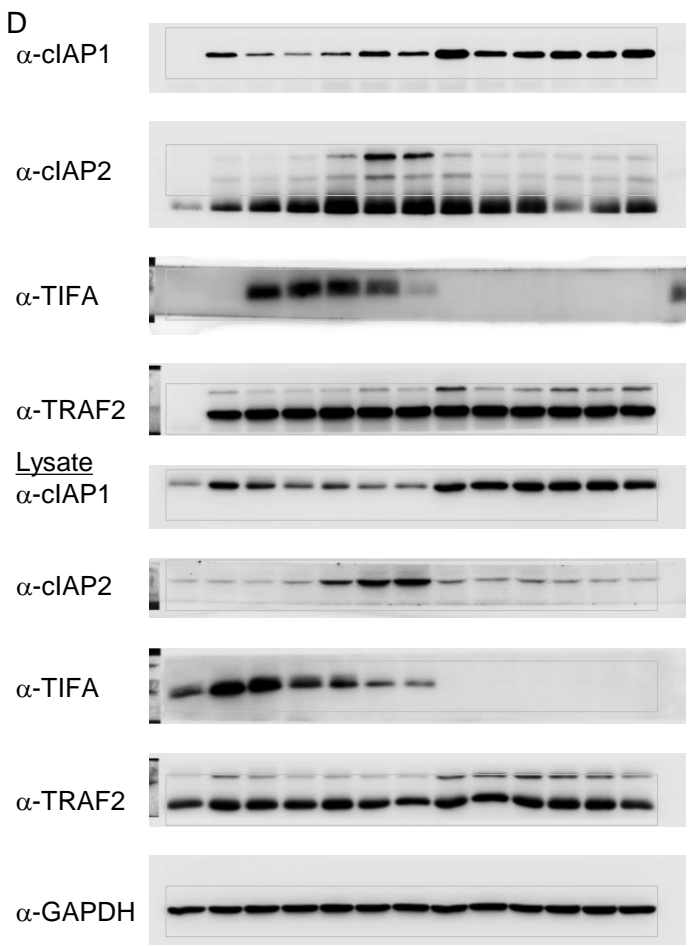
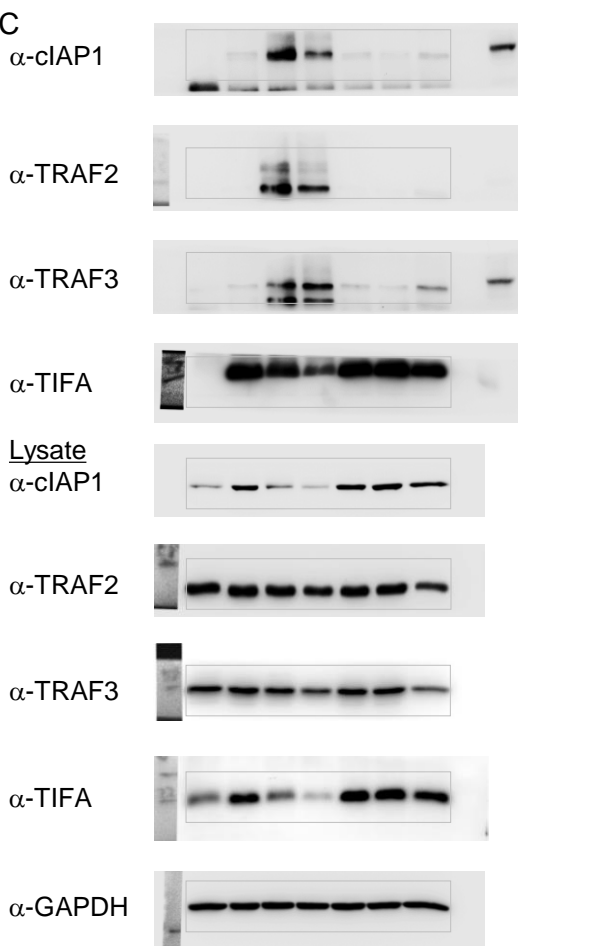


Fig. 3 uncropped immunoblots

