

Supplementary 3

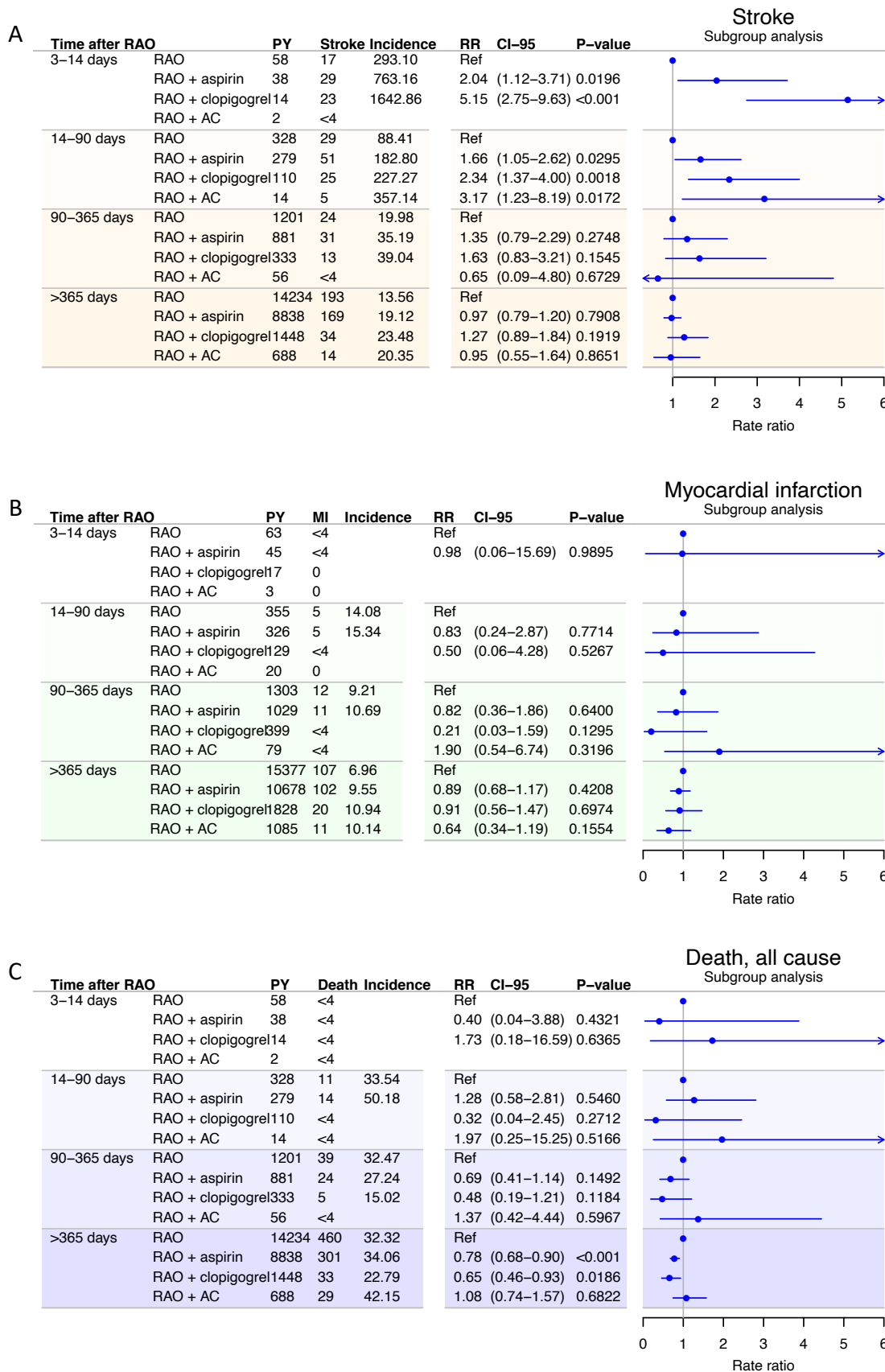


Figure 3S, A-C. Results from the subgroup analyses including only RAO patients who had not received previous antithrombotic treatment and did not have any of the following conditions: temporal arteritis, AFLI, carotid endarterectomy, previous stroke or IHD. Results presented as incidence and rate ratios of stroke, myocardial infarction, and death respectively in time periods after RAO stratified on treatment with antithrombotic medication with no treatment as the reference. Rate ratios are adjusted for sex, age, calendar time, diabetes mellitus, hypertension, heart failure, chronic kidney disease, and cancer. Incidences are per 1000 person years.

AC = anticoagulant treatment, PY = person years, MI = myocardial infarction, RR = rate ratio, CI-95 = 95% confidence interval, RAO = retinal artery occlusion.