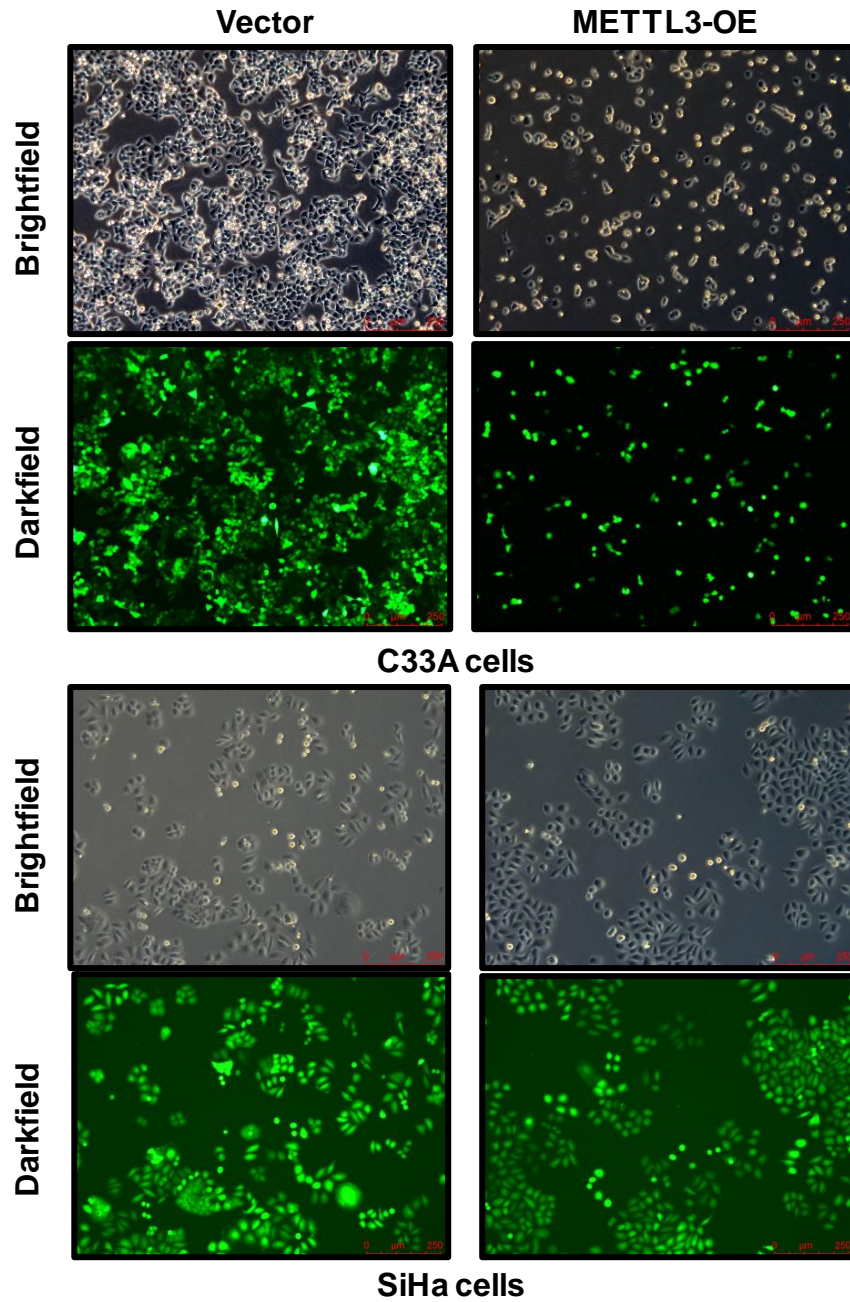


**OMTO, Volume 22**

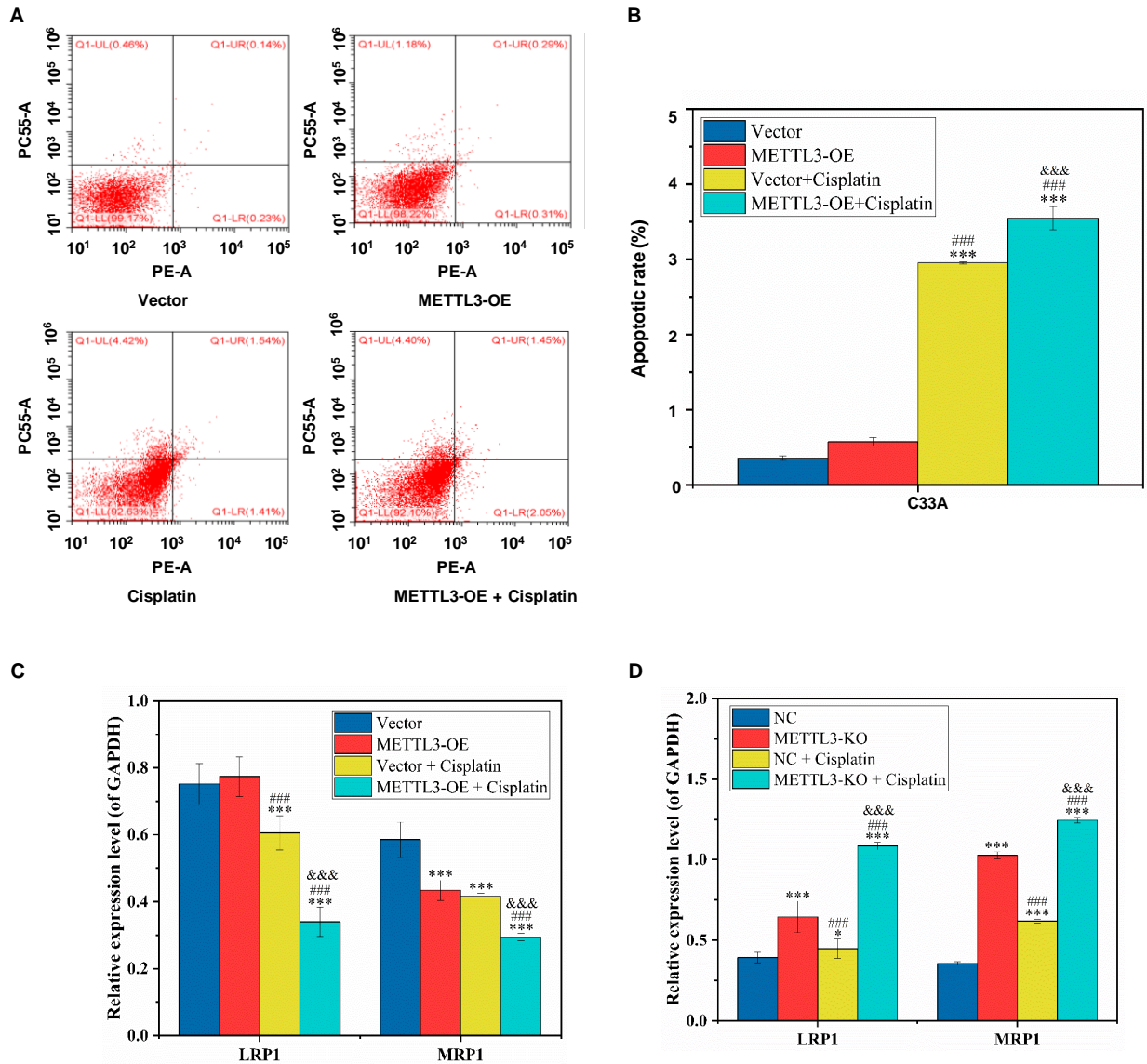
**Supplemental information**

**METTL3 increases cisplatin chemosensitivity  
of cervical cancer cells via downregulation  
of the activity of RAGE**

**Ruyi Li, Yizuo Song, Xin Chen, Man Chu, Zhi-wei Wang, and Xueqiong Zhu**



**Supplementary figure 1. METTL3 inhibits viability of cervical cancer cells.** SiHa cells with METTL3 cDNA transfection was observed under brightfield, and their GFP-green fluorescences were observed under darkfield of microscope ( $\times 100$  magnification).



**Supplementary figure 2: The effect of METTL3 on cisplatin sensitivity in cervical cancer cells.** A-B: The difference of chemotherapeutic sensitivity of cisplatin between C33A cells with METTL3 overexpression and Vector-C33A cells was analyzed by Flow cytometry. C: Quantitative results are shown for Figure 2D. D: Quantitative results are shown for Figure 2H.