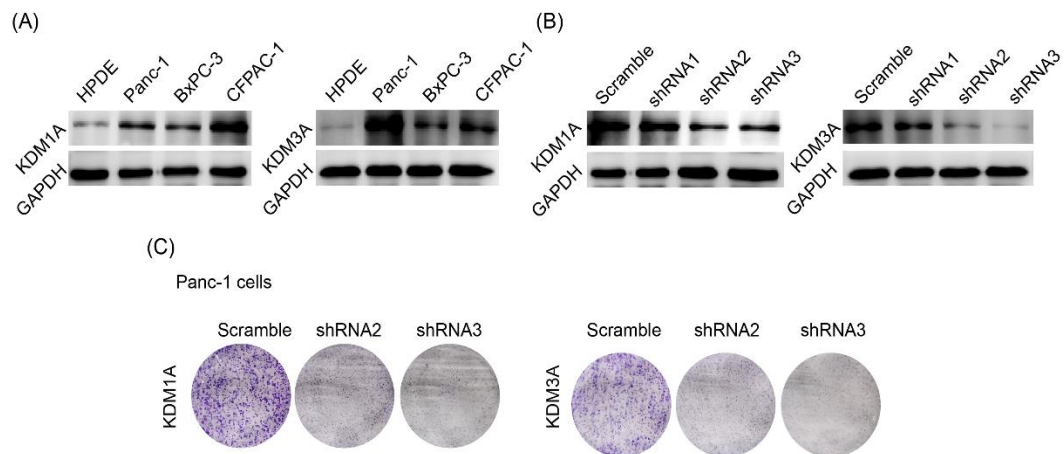


### Supplementary Fig. 1



Supplementary Fig. 1 (A) Compare the protein expression of KDM1A and KDM3A in Panc-1, CFPAC-1 and BxPC-3 cells with HPDE cells. (B) Compare the knockdown efficiency of different shRNAs of KDM1A and KDM3A in Panc-1 cells. KDM1A shRNA2 was selected for further study. KDM3A shRNA3 was selected for further study. (C) Determine the ability of colony formation in Panc-1 cells treated by scramble or shRNAs.