

iScience, Volume 24

## Supplemental information

### **Norepinephrine modulates wakefulness via $\alpha$ 1 adrenoceptors in paraventricular thalamic nucleus**

**Yan Wang, Ling Xu, Ming-Zhe Liu, Dan-Dan Hu, Fang Fang, Dao-Jie Xu, Rui Zhang, Xiao-Xiao Hua, Jin-Bao Li, Ling Zhang, Li-Na Huang, and Di Mu**

Supplemental Information

Figure S1.

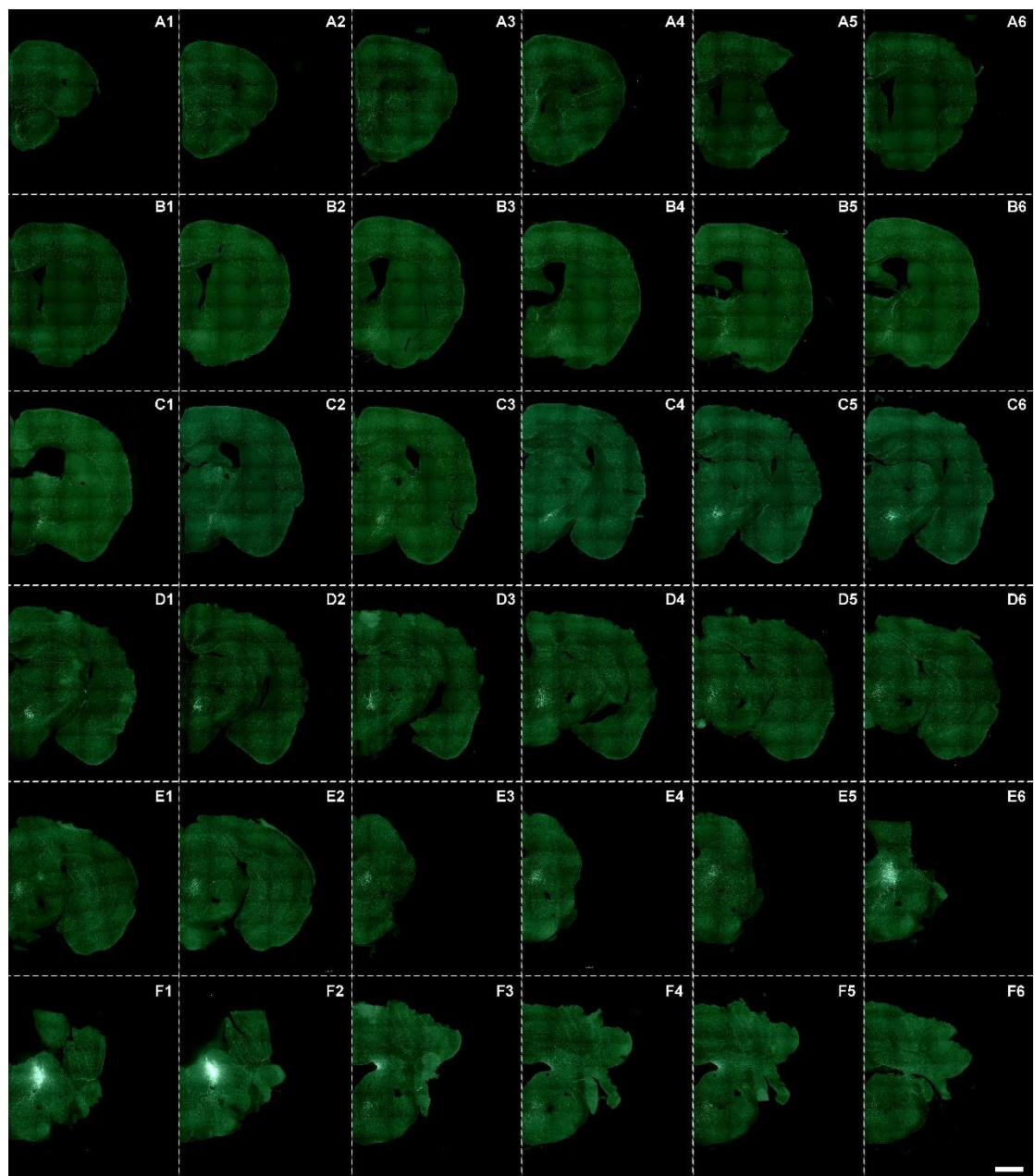
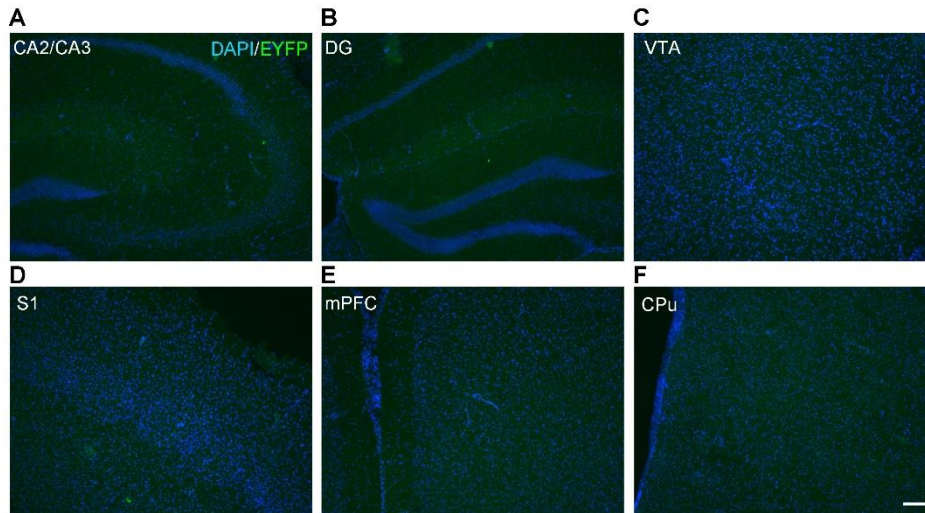


Figure S2.



### Figure legends

#### Figure S1. The LC NE System Has a Broad Projection, Related to Figure 1.

(A-F) Efferent fibers from LC NE neurons in *Dbh-Cre* mice. E6, F1, and F2 showed the infection areas in the LC. Scale bar: 1 mm.

#### Figure S2. The PVT-projecting LC NE Neurons Have Few Collateral Projection Fibers, Related to Figure 1.

(A-F) The collateral projection fibers from PVT-projecting LC NE neurons in CA2/CA3 (A), dentate gyrus (DG, B), ventral tegmental area (VTA, C), primary somatosensory cortex (S1, C), medial prefrontal cortex (mPFC, E) and caudatoputamen (CPu, F). Scale bar: 50  $\mu$ m.