

Supplementary Appendix

This appendix has been provided by the authors to give readers additional information about their work.

Supplement to: Barda N, Dagan N, Ben-Shlomo Y, et al. Safety of the BNT162b2 mRNA Covid-19 vaccine in a nationwide setting. *N Engl J Med*. DOI: [10.1056/NEJMoa2110475](https://doi.org/10.1056/NEJMoa2110475)

Supplementary Materials

Safety of the BNT162b2 mRNA Covid-19 Vaccine in a Nationwide Setting

Noam Barda, MD^{*1,2,3,4}; Noa Dagan, MD^{*1,2,3,4}; Yatir Ben-Shlomo BSc¹, Eldad Kepten, PhD¹; Jacob Waxman, MD¹; Reut Ohana, MSc¹; Miguel A. Hernán, MD^{5,6}; Marc Lipsitch, DPhil⁷; Isaac Kohane, MD^{3,4}; Doron Netzer, MD⁸; Ben Y. Reis, PhD^{**4,9,10}; Ran D. Balicer, MD^{1,4,11**}

¹ Clalit Research Institute, Innovation Division, Clalit Health Services, Tel Aviv, Israel

² Software and Information Systems Engineering, Ben Gurion University, Be'er Sheva, Israel

³ Department of Biomedical Informatics, Harvard Medical School, Boston, MA, USA

⁴ The Ivan and Francesca Berkowitz Family Living Laboratory Collaboration at Harvard Medical School and Clalit Research Institute

⁵ Departments of Epidemiology and Biostatistics, Harvard T.H. Chan School of Public Health, Boston, MA, USA

⁶ CAUSALab, Harvard T.H. Chan School of Public Health, Boston, MA, USA

⁷ Center for Communicable Disease Dynamics, Department of Epidemiology and Department of Immunology and Infectious Diseases, Harvard T.H. Chan School of Public Health, Boston, MA, USA

⁸ Community Medical Services Division, Clalit Health Services, Arlozorov 101, Tel Aviv, Israel

⁹ Predictive Medicine Group, Computational Health Informatics Program, Boston Children's Hospital, Boston, MA, USA

¹⁰ Harvard Medical School, Boston, MA, USA

¹¹ School of Public Health, Faculty of Health Sciences, Ben Gurion University of the Negev, Be'er Sheva, Israel

* These authors contributed equally.

** These authors contributed equally.

Corresponding Author:

Ran D. Balicer, MD, PhD, MPH

Clalit Research Institute, Innovation Division, Clalit Health Services, Tel Aviv, Israel

Rbalicer@clalit.org.il

Contents

Supplementary Methods 1 – The target trial	1
Figure S1 – Cumulative incidence curves.....	3
Table S1 – Definitions of variables used for the exposure, eligibility and adjustment.....	16
Table S2 – Definition of outcomes.....	23
Table S3 – Population characteristics of the eligible cohorts of vaccinated and infected individuals .	25
Table S4 – Outcome specific population tables for the vaccination exposure analyses	27
Table S5 – Outcome specific population tables for the SARS-CoV-2 exposure analyses	52
Table S6 – Risk ratios and risk differences (per 100,000 persons) of potential adverse outcomes for SARS-CoV-2 vaccination and SARS-CoV-2 Infection.....	77

Supplementary Methods 1 – The target trial

In the main text we simplified the specification of the interventions of the target trial as vaccination vs. no vaccination. A more precise specification of the interventions would be “vaccination and no exposure to SARS-CoV-2” vs. “no vaccination and no exposure to SARS-CoV-2”. That is, we sought to emulate a target trial in which individuals are assigned to either a vaccination or no vaccination, and in which all individuals in both arms are assigned to no coronavirus infection. This target trial is implicit in most observational studies of vaccine safety, which attempt to estimate the direct effects of vaccination that are not mediated through the vaccine’s preventive effect on infection.

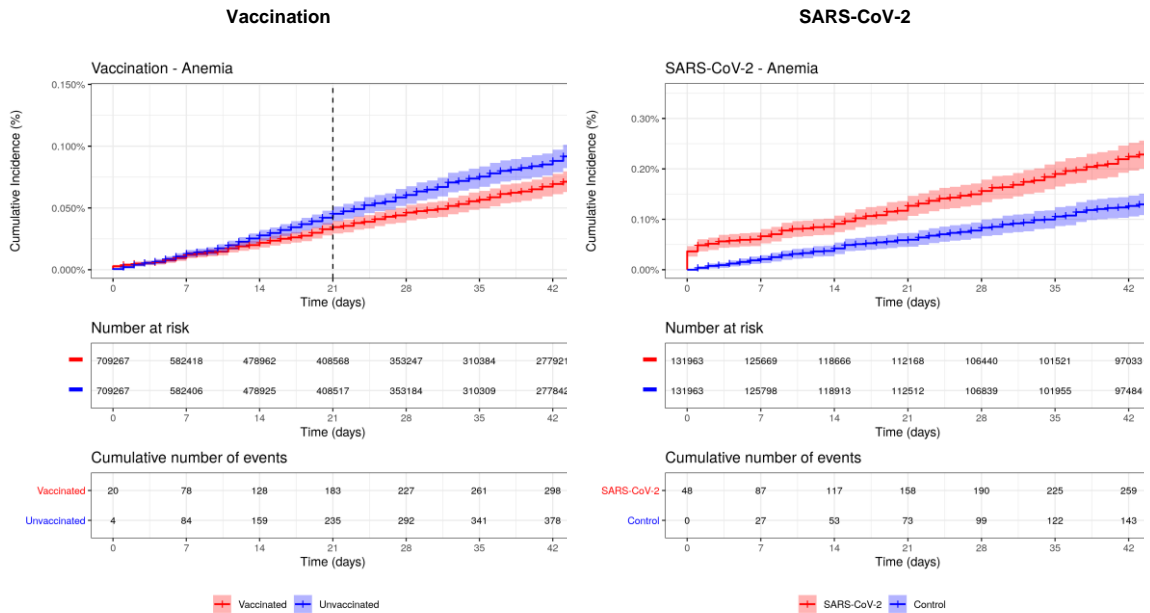
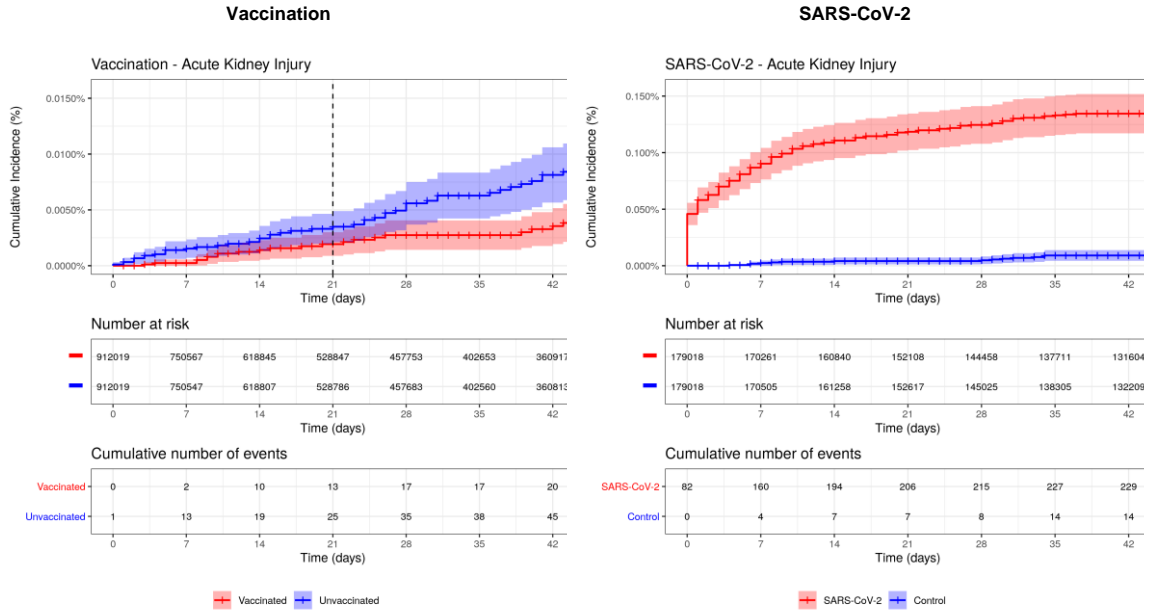
Otherwise, if the target trial allowed individuals to be exposed to SARS-CoV-2, we would likely observe that, for example, the vaccine protects against pneumonia because the vaccine protects against SARS-CoV-2 infection, which in turn causes pneumonia. If pneumonia was (theoretically) an adverse event of the vaccine, this effect could potentially be masked by the protective effect of the vaccine against the infection. In addition, if the target trial allowed individuals to be exposed to SARS-CoV-2, the incidence of the events mediated by SARS-CoV-2 infection would depend on the background rate of SARS-CoV-2 infection in the study population, which would make the effect estimates highly dependent on pandemic activity during the follow-up period.

To emulate a target trial in the absence of coronavirus infection, we censored individuals at the time of a documented SARS-CoV-2 infection diagnosis. Two potential issues arise from this approach: First, as mentioned in the manuscript text, some infections may not be documented, meaning that some of the effects observed may indeed be mediated through SARS-CoV-2 infection. Second, conditional on the matched covariates, uncensored individuals are assumed to have a risk similar to that

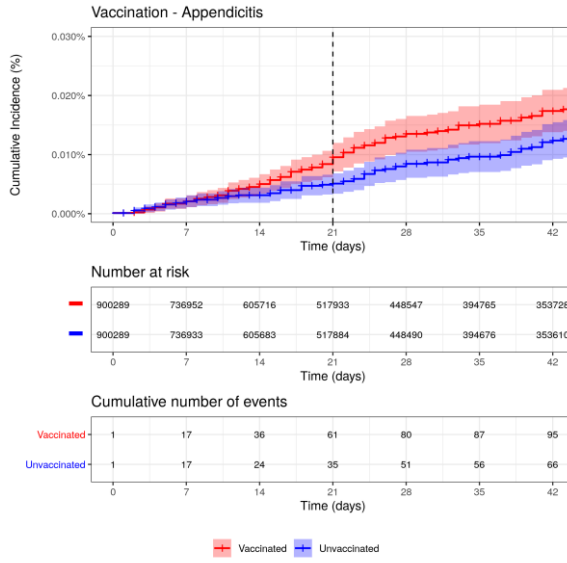
of the censored individuals had they not been infected, an assumption we have no reason to believe would be grossly violated in the present setting.

Figure S1 – Cumulative incidence curves

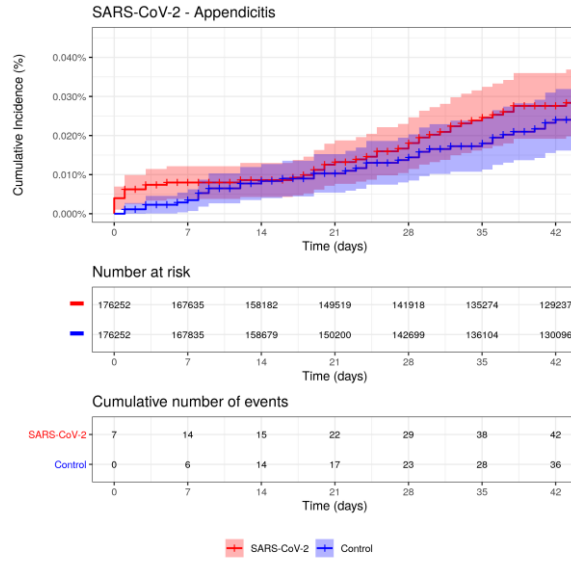
Cumulative incidence curves (one minus the Kaplan-Meier plot) for each of the two exposures for the different outcomes starting from the day of the first dose. Shaded areas are 95% confidence intervals. The tables below each curve show the number at risk at each time point and the cumulative number of events.



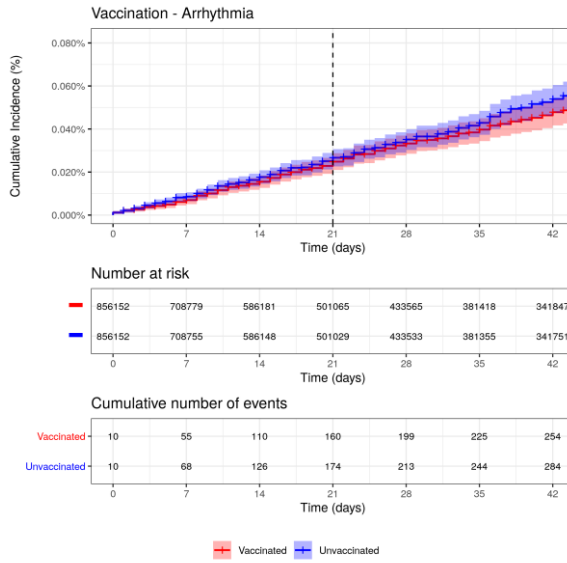
Vaccination



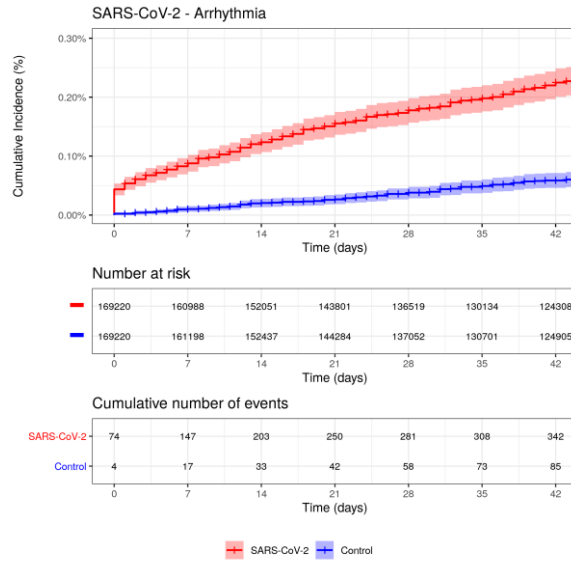
SARS-CoV-2



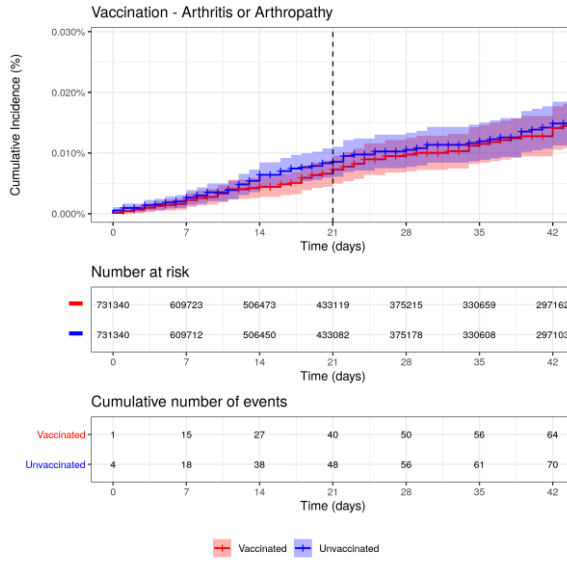
Vaccination



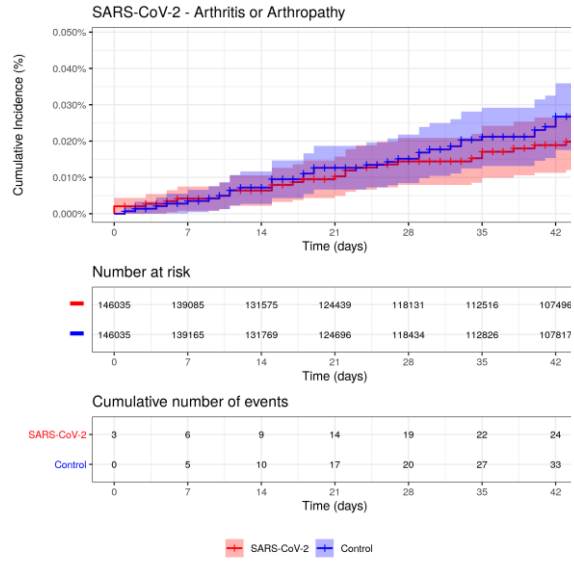
SARS-CoV-2



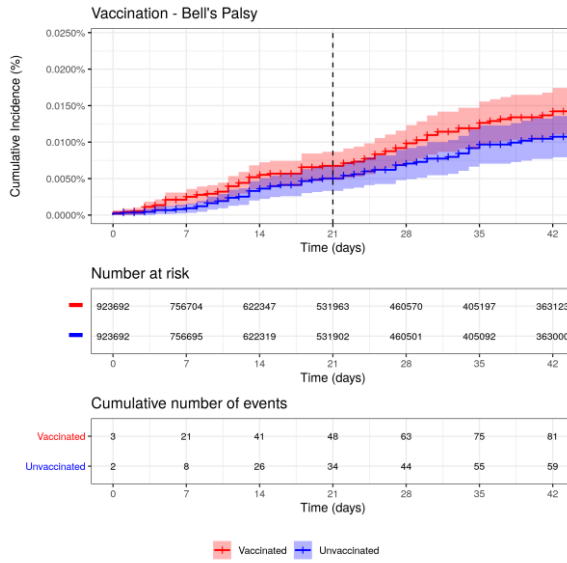
Vaccination



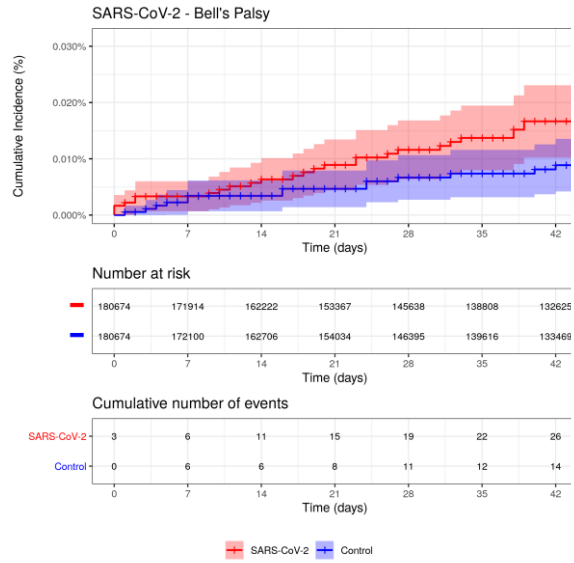
SARS-CoV-2



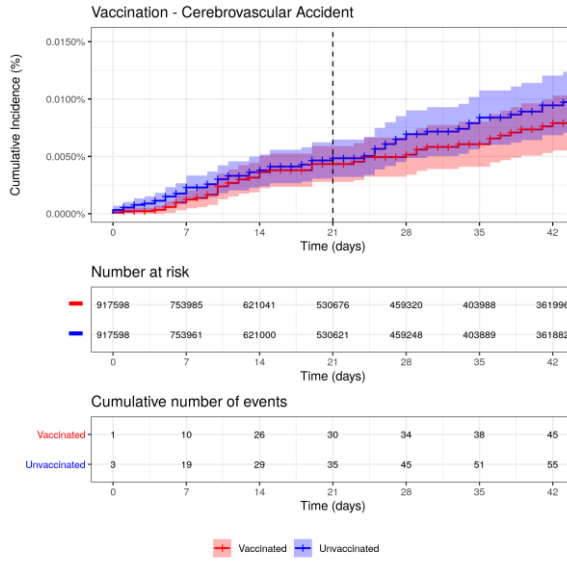
Vaccination



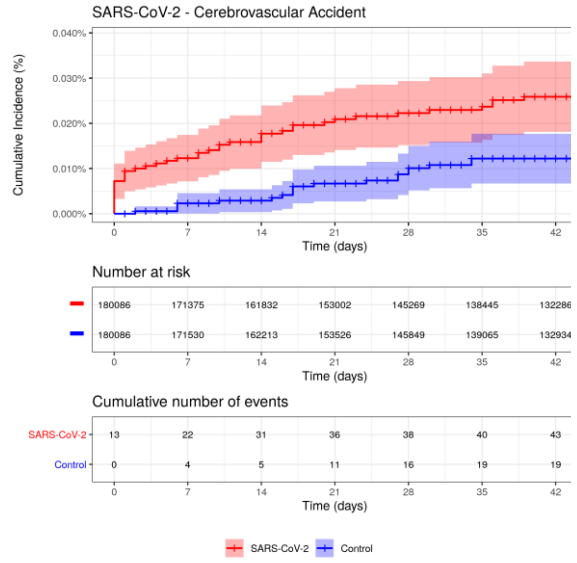
SARS-CoV-2



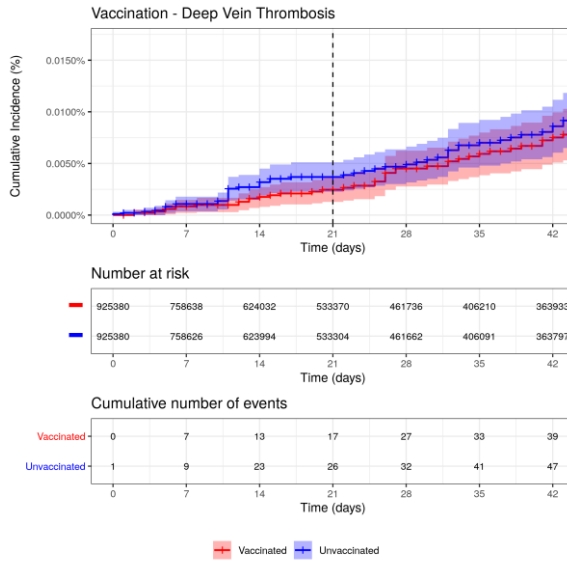
Vaccination



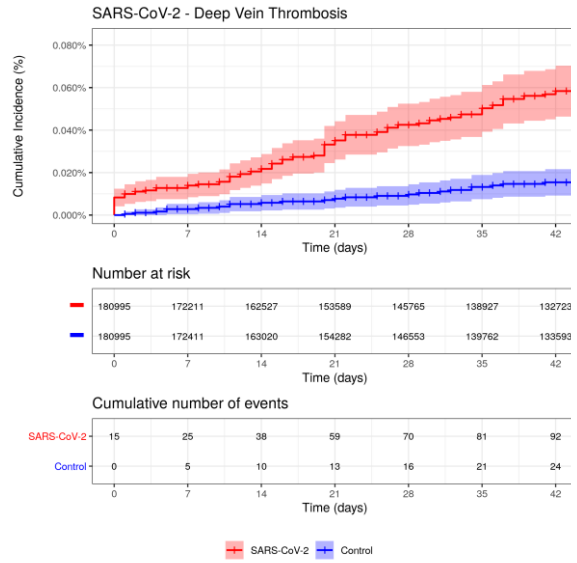
SARS-CoV-2



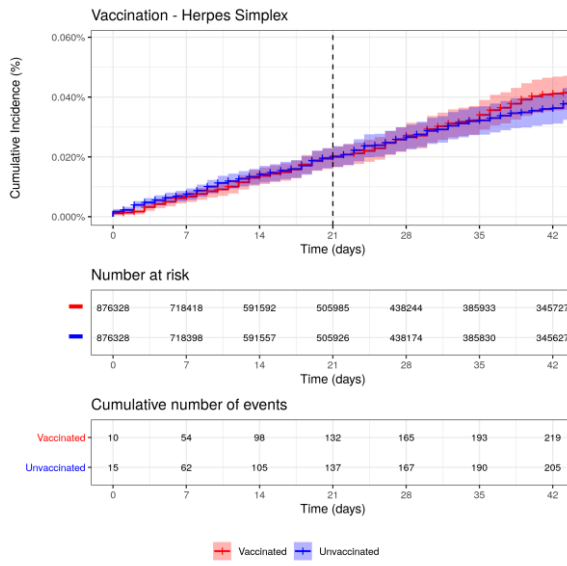
Vaccination



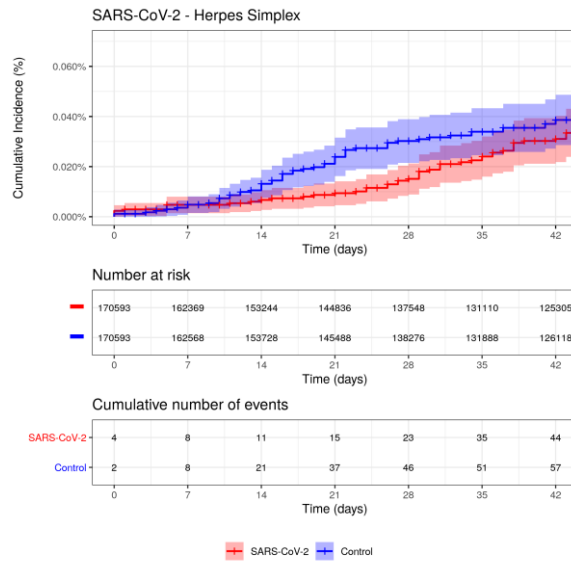
SARS-CoV-2



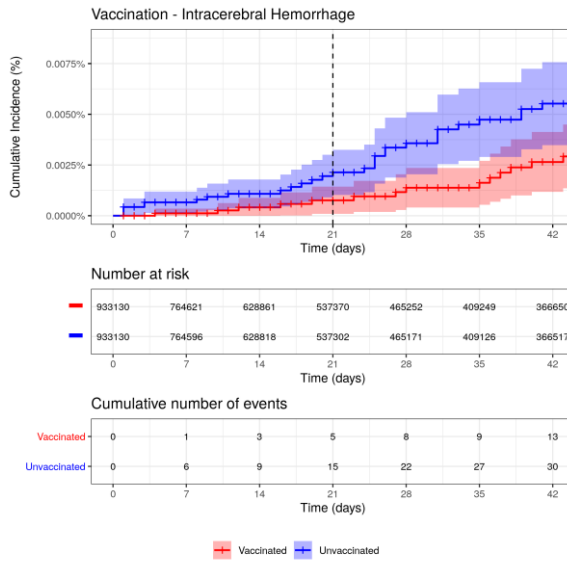
Vaccination



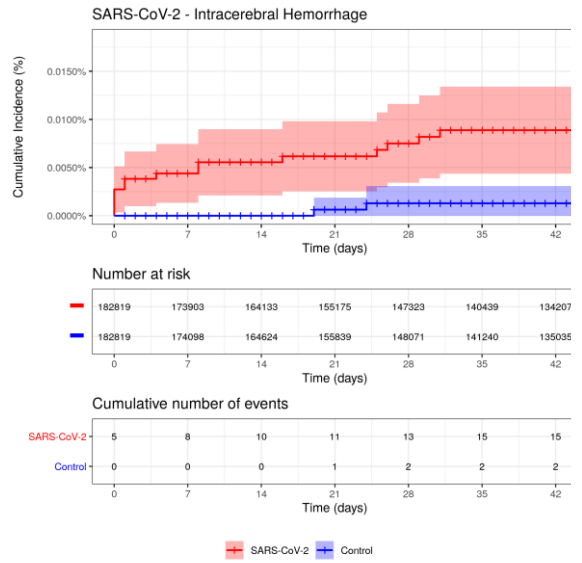
SARS-CoV-2



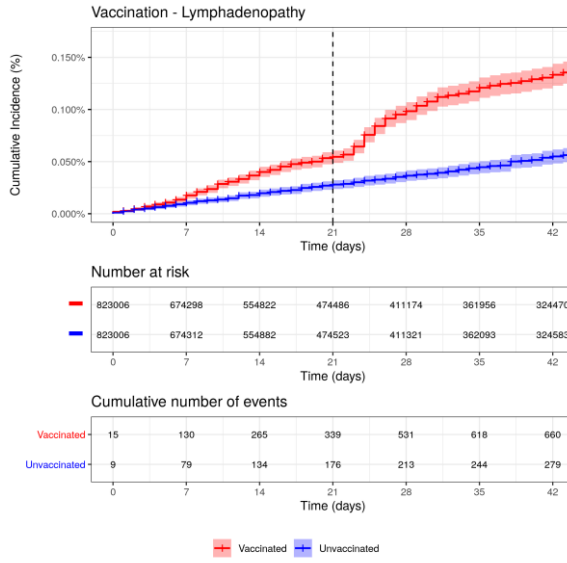
Vaccination



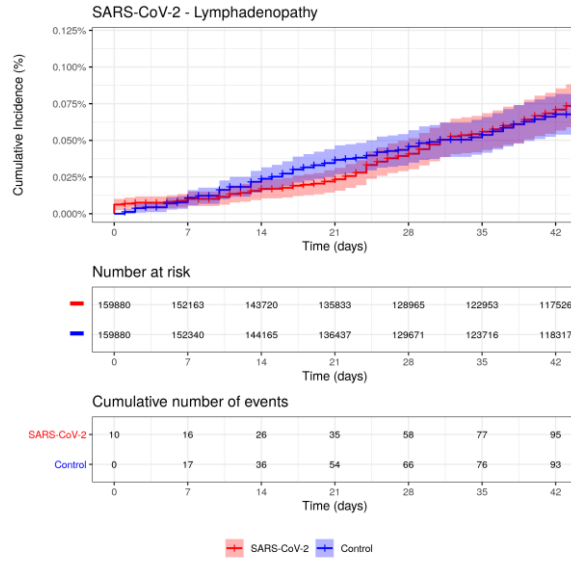
SARS-CoV-2



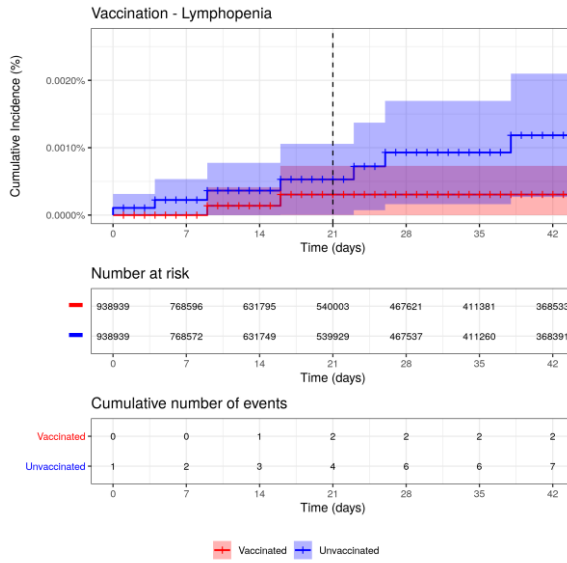
Vaccination



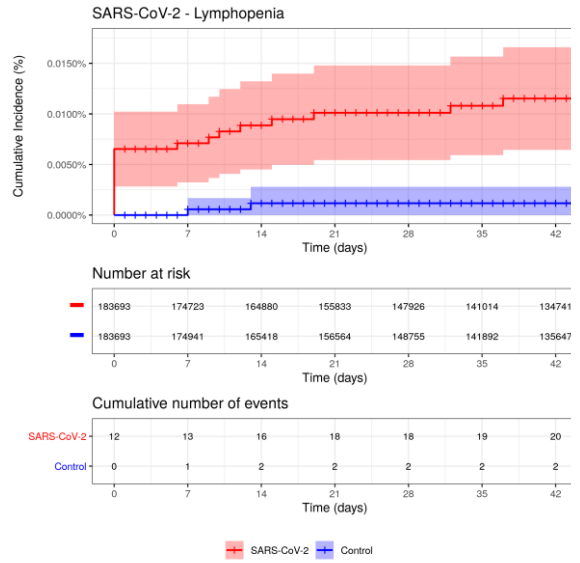
SARS-CoV-2



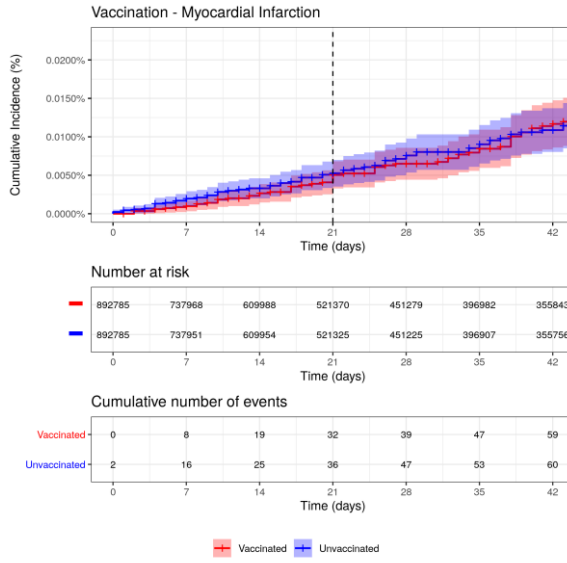
Vaccination



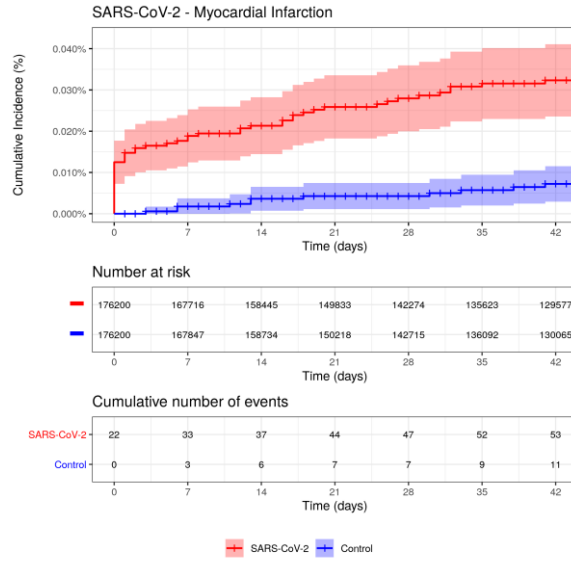
SARS-CoV-2



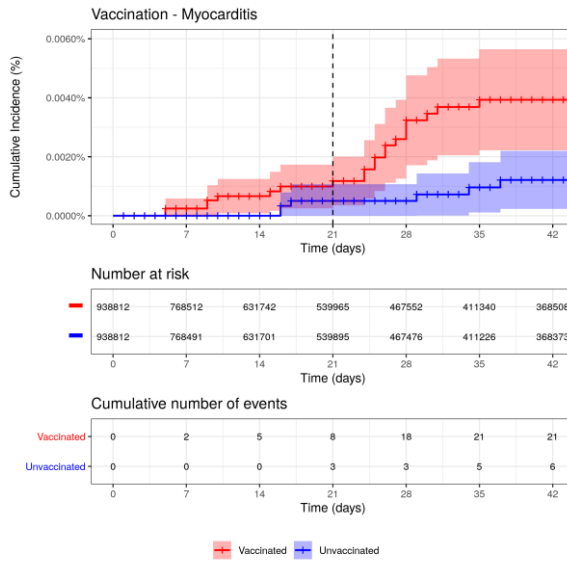
Vaccination



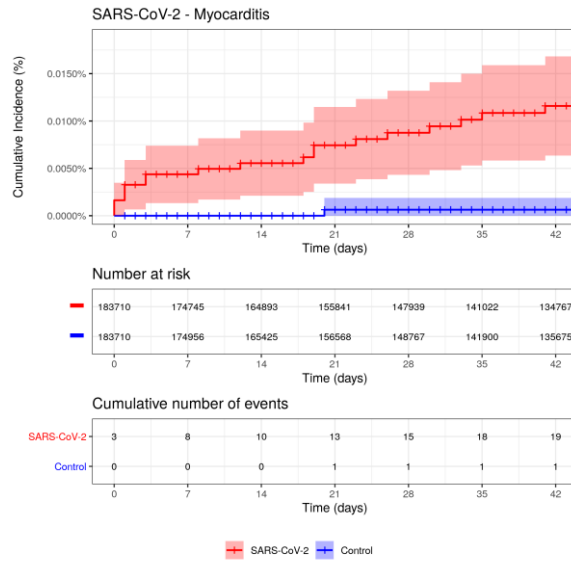
SARS-CoV-2



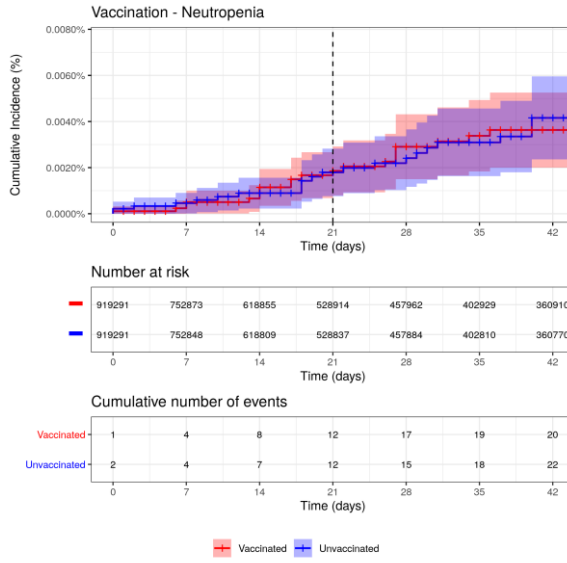
Vaccination



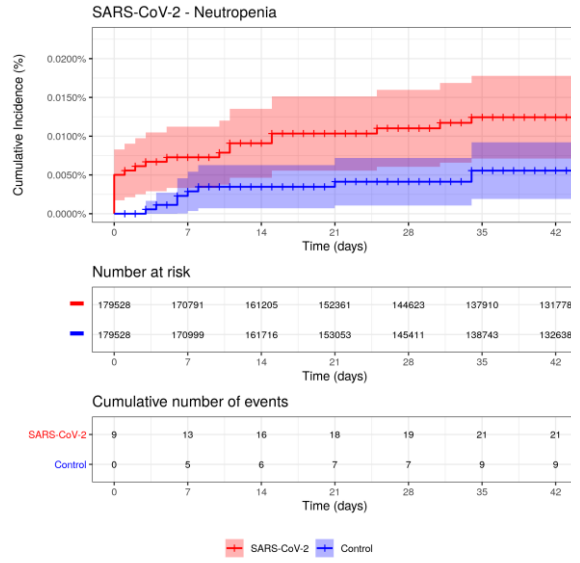
SARS-CoV-2



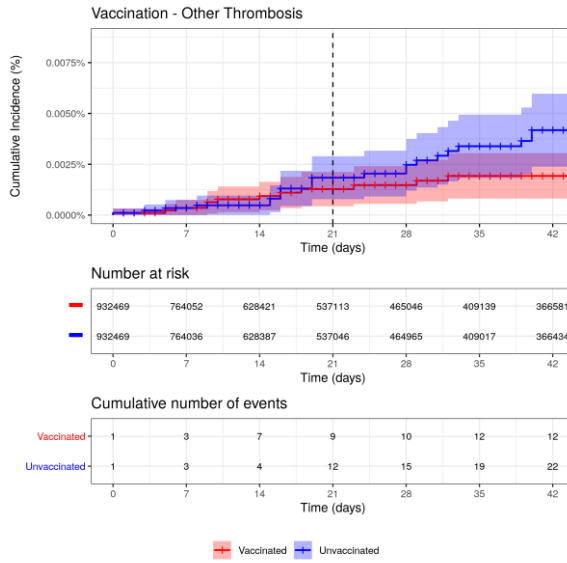
Vaccination



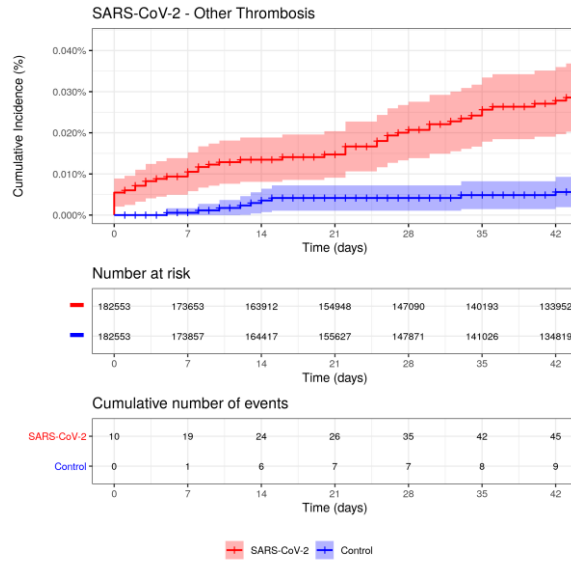
SARS-CoV-2



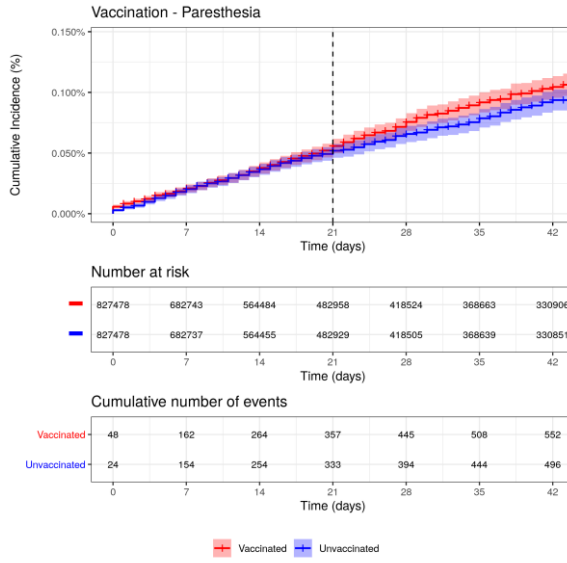
Vaccination



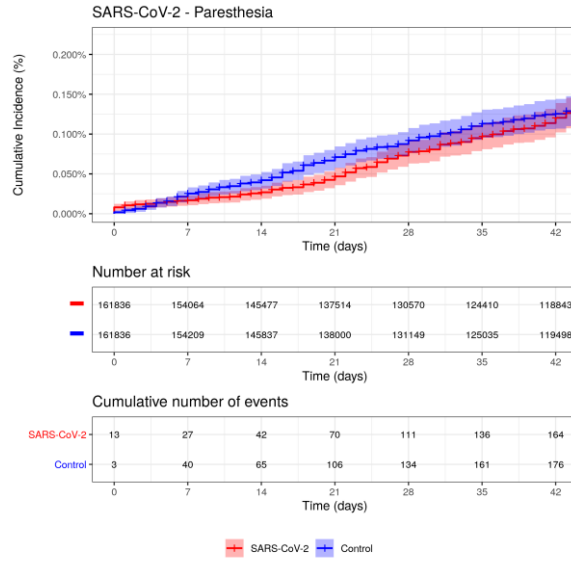
SARS-CoV-2



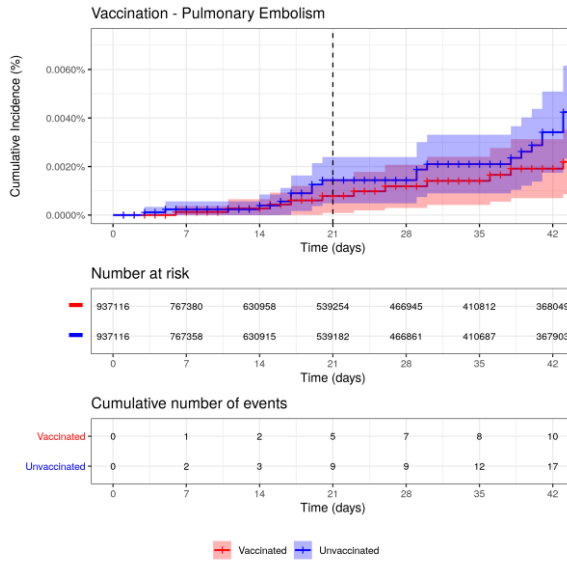
Vaccination



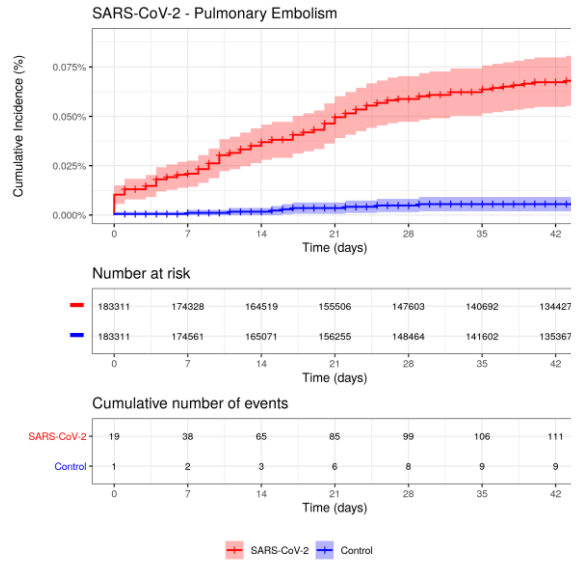
SARS-CoV-2



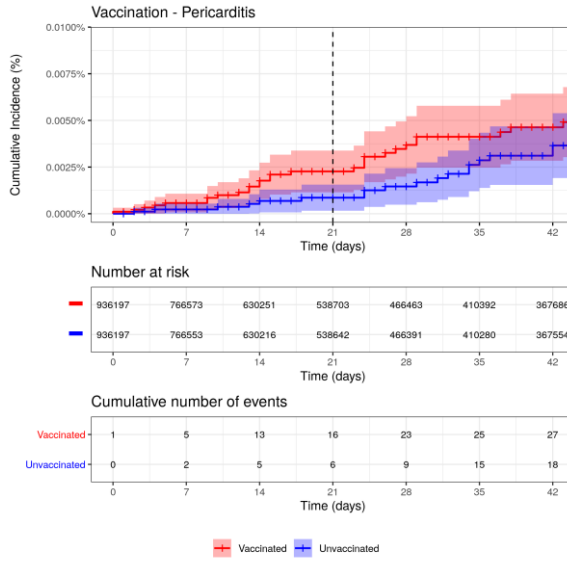
Vaccination



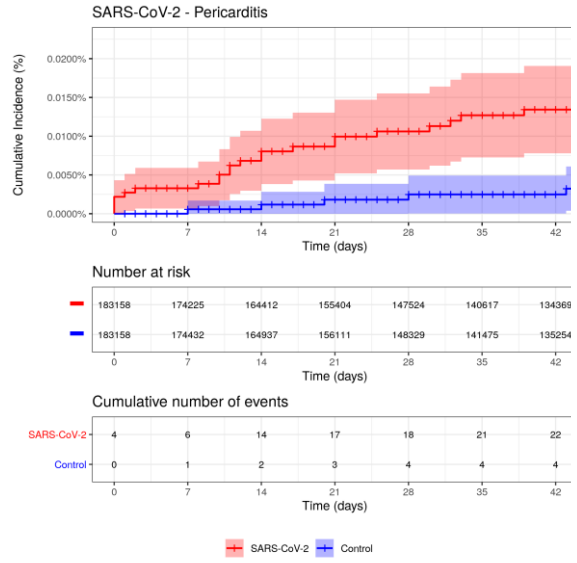
SARS-CoV-2



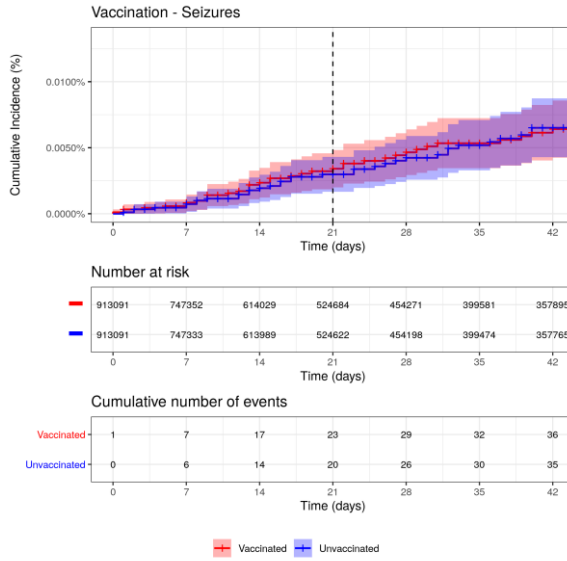
Vaccination



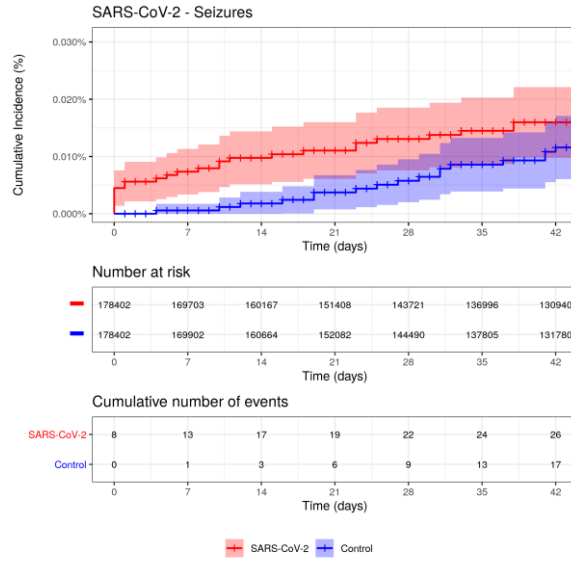
SARS-CoV-2



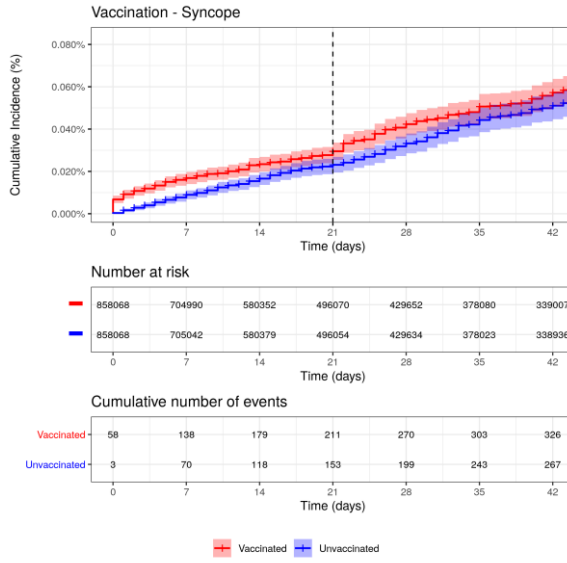
Vaccination



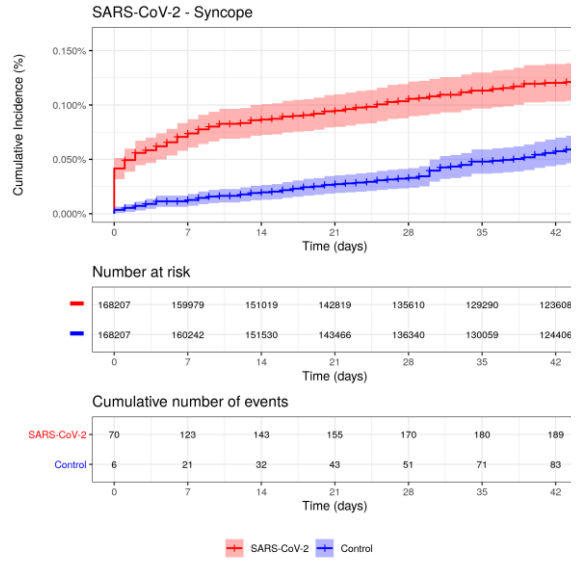
SARS-CoV-2



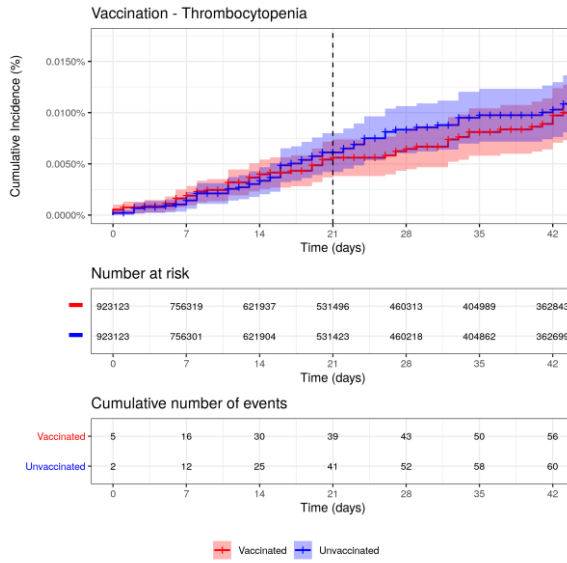
Vaccination



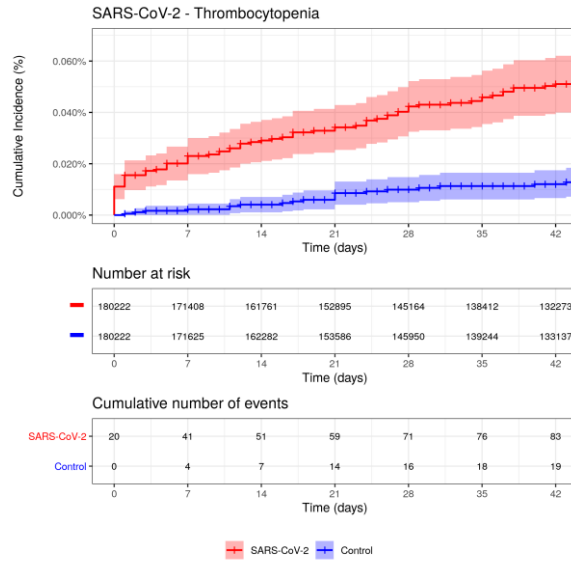
SARS-CoV-2



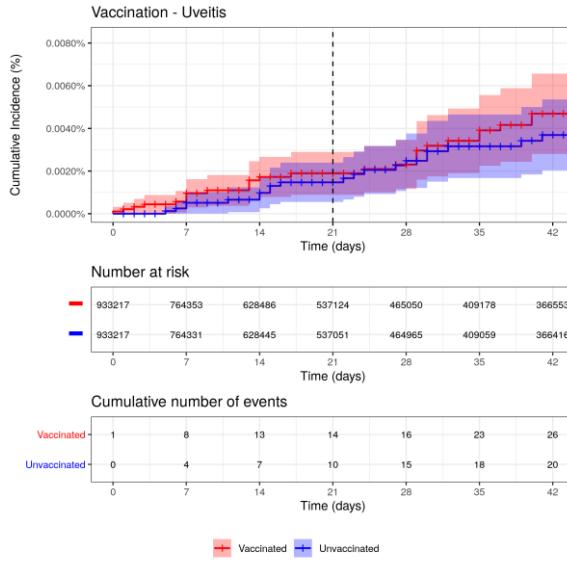
Vaccination



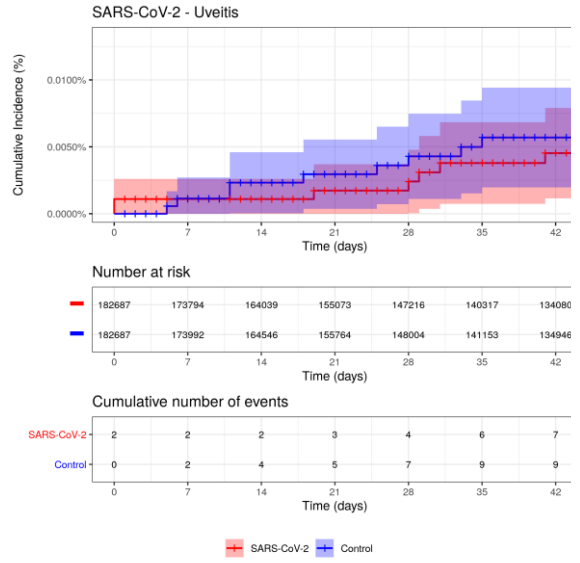
SARS-CoV-2



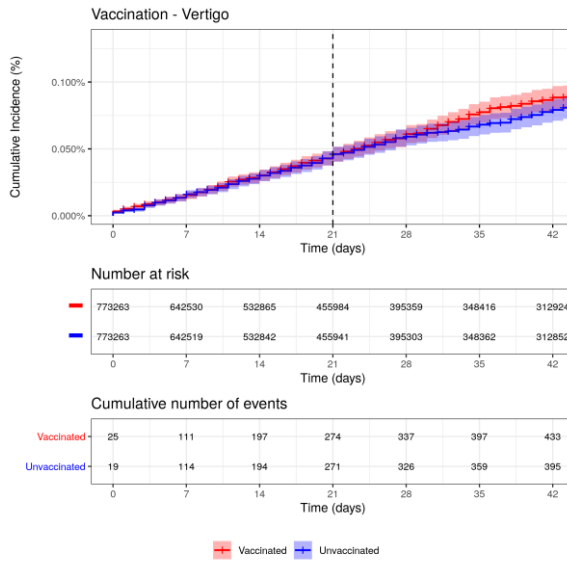
Vaccination



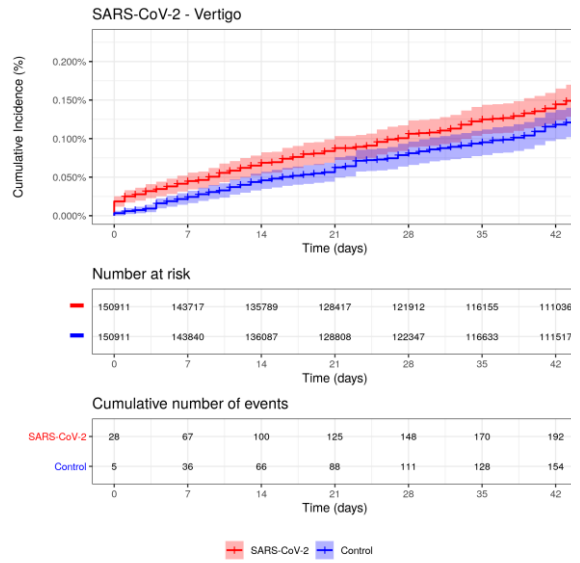
SARS-CoV-2



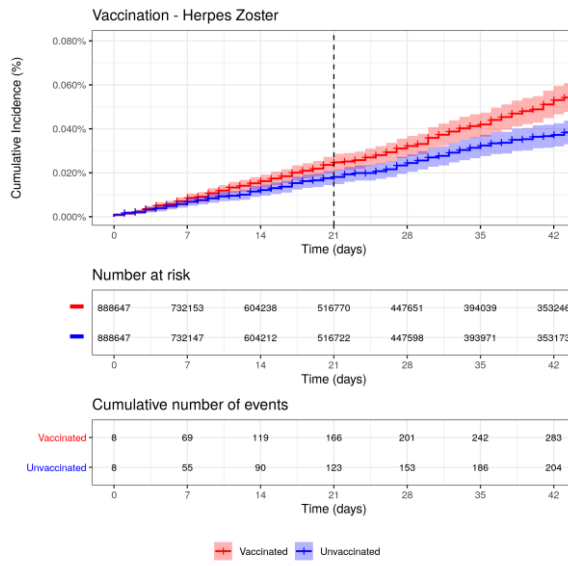
Vaccination



SARS-CoV-2



Vaccination



SARS-CoV-2

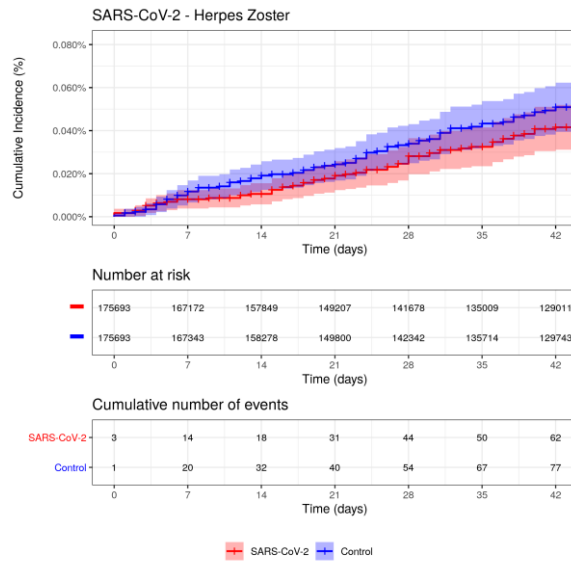


Table S1 – Definitions of variables used for the exposure, eligibility and adjustment

Names, potential values, definitions and time periods for all variables used in the study to define exposure, eligibility and perform adjustment. Variables were defined using internal CHS registries, ICD-9 codes, and ATC codes. PCR: Polymerase Chain Reaction; CHS: Clalit Health Services; ICD: International Classification of Disease; ATC: Anatomic therapeutic chemical; COPD: Chronic Obstructive Pulmonary Disease.

Variable	Values	Definitions ¹	Timing ²
Exposure			
SARS-CoV-2 Vaccination	0/1	Vaccination using the BNT162b2 mRNA Covid-19 Vaccine	The date of administration of the first dose.
Documented SARS-CoV-2 Infection	0/1	PCR-confirmed SARS-CoV-2 infection.	The date of specimen collection that was found to be positive in a PCR test.
Eligibility & Adjustment			
Age	Integer	Age in complete years	Current
Sex	Male/Female	As defined in CHS files	Current
Long-term care facility resident	0/1	Is patient a long-term care facility resident per CHS files	Current
Confined to Home	0/1	Is patient confined to his home per CHS files	Current
Health-care worker	0/1	Is patient a health-care worker per CHS files	Current
Continuous Membership in the Health Organization	0/1	Was patient a member of CHS for a full year before the index date	Last Year
Interaction with the Healthcare System	0/1	Has the patient had a community health encounter or hospitalization in the 7 days prior to the index date	Last 7 days
Place of Residence	List of places	Geo-statistical area in which the patient resides per CHS files	Current
Socioeconomic Status	0-6	Patient socioeconomic status, based on home address	Current
Population Sector	General Jewish /	As defined in CHS files	Current

	Arab / Ultraorthod ox Jewish		
Pregnancy	0/1	As defined in CHS files	Current
Influenza vaccinations	0/1	Did patient receive an influenza vaccination in the last 5 years	Last 5 Years
Cancer	0/1	ICD9 Code 174* ICD9 Code 175* ICD9 Code 233.0 ICD9 Code V10.3 ICD9 Proc Code 85.4* ICD9 Code 153* ICD9 Code 154* ICD9 Code V10.5* ICD9 Code V10.6* ICD9 Code 185 ICD9 Code V10.46 ICD9 Code 162* ICD9 Code V10.1* ICD9 Code 188* ICD9 Code V10.51 ICD9 Code 183* ICD9 Code V10.43 ICD9 Code 179 ICD9 Code 182* ICD9 Code V10.42 ICD9 Code 157* ICD9 Code 191* ICD9 Code 192* ICD9 Code V10.85 ICD9 Code 151* ICD9 Code V10.04 ICD9 Code 172* ICD9 Code V10.82 ICD9 Code 201* ICD9 Code 200* ICD9 Code 202.4* ICD9 Code 204* ICD9 Code 205* ICD9 Code 206* ICD9 Code 207.1* ICD9 Code 208.1* ICD9 Code 189* ICD9 Code V10.52 ICD9 Code 160* ICD9 Code 161* ICD9 Code 164.0 ICD9 Code 195.0 ICD9 Code V10.21 ICD9 Code V10.22 ICD9 Code 180* ICD9 Code V10.41 ICD9 Code 140* ICD9 Code 141*	Last 5 years

		ICD9 Code 142* ICD9 Code 143* ICD9 Code 144* ICD9 Code 145* ICD9 Code 150* ICD9 Code V10.03 ICD9 Code 155* ICD9 Code 156* ICD9 Code V10.07 ICD9 Code 170* ICD9 Code V10.81 ICD9 Code 193 ICD9 Code V10.87 ICD9 Code 171* ICD9 Code 176* ICD9 Code 184* ICD9 Code 186* ICD9 Code 187* ICD9 Code V10.4* ICD9 Code 203* ICD9 Code 273.3 ICD9 Code 152* ICD9 Code 158* ICD9 Code 159* ICD9 Code 163* ICD9 Code 164* ICD9 Code 165* ICD9 Code 181 ICD9 Code 190* ICD9 Code 192.8 ICD9 Code 196* ICD9 Code 197* ICD9 Code 198* ICD9 Code 199*	
Chronic Kidney Disease	0/1	ICD Proc Code 39.95 ICD Proc Code 54.98 ICD9 Code 996.81 ICD9 Code V42.0 ICD Proc Code 55.6* ICD9 Code 403._1 ICD9 Code 404._2 ICD9 Code 404._3 ICD9 Code 585* ICD9 Code 586 ICD9 Code 250.4* ICD9 Code 274.1* ICD9 Code 440.1 ICD9 Code 581* ICD9 Code 582* ICD9 Code 583* ICD9 Code 587 ICD9 Code 588* ICD9 Code 589*	Ever
Chronic Obstructive Pulmonary Disease	0/1	ICD9 Code 491* ICD9 Code 492*	Ever

		ICD9 Code 496	
Heart Conditions	0/1	ICD9 Code 410* ICD9 Code 411* ICD9 Code 412 ICD9 Code 413* ICD9 Code 414* ICD9 Code 429.2, 429.7* ICD9 Code V45.81, V45.82 ICD9 Proc Code 36.0* ICD9 Proc Code 36.1* ICD9 Code 428* ICD9 Code 398.91 ICD9 Code 402._1 ICD9 Code 404._1, ICD9 Code 404._3 ICD9 Code 416.9 ICD9 Code 514 ICD9 Code 425* ICD9 Code 416*	Ever
Solid Organ Transplant Recipient	0/1	ICD9 Code 996.81 ICD9 Code V42.0 ICD Proc Code 55.6* ICD9 Code V42.7 ICD Proc Code 50.5* ICD9 Code V42.1 ICD9 Code V43.2 ICD Proc Code 37.5 ICD9 Code V42.83 ICD Proc Code 52.8* ICD9 Code V42.6 ICD Proc Code 33.5* ICD Proc Code 33.6	Ever
Obesity	0/1	Body Mass Index (BMI) 30-40	Latest measurement in last 5 years not taken during pregnancy
Severe Obesity	0/1	Body Mass Index (BMI) 40+	Latest measurement in last 5 years not taken during pregnancy
Pregnancy	0/1	Internal Clalit Registry	Current
Sickle Cell Disease	0/1	ICD9 Code 282.6*	Ever
Smoking	0/1	Internal Clalit Registry	Last recorded value
Type 2 Diabetes Mellitus	0/1	HbA1C > 6.5 ATC Codes A10[A,B] ICD9 Code 250* ICD9 Code 357.2 ICD9 Code 362.0* And not: ICD9 Code 250._1,	For diagnosis codes, Ever For drugs, 4 or more dispensed in last 12 months

		250..3	
Asthma	0/1	ICD9 Code 493*	Ever
Cerebrovascular Disease	0/1	ICD9 Code 362.34 ICD9 Code 430 ICD9 Code 431 ICD9 Code 432* ICD9 Code 433* ICD9 Code 434* ICD9 Code 435* ICD9 Code 436* ICD9 Code 438*	Ever
Other Respiratory Disease	0/1	ICD9 Code 277.0* ICD9 Code 494* ICD9 Code 515	Ever
Hypertension	0/1	ICD9 Code 401* ICD9 Code 402* ICD9 Code 403* ICD9 Code 404* ICD9 Code 405*	Ever
Immunocompromised State	0/1	Any of: ICD9 Code 042* ICD9 Code 043* ICD9 Code 044* ICD9 Code 795.71 ICD9 Code V08 ICD9 Code V42.8* ICD9 Proc Code 41.0* Or at least 2 of: ATC4 Code H02AB ATC4 Code H02BX ATC4 Code M01BA Or at least 2 of: ATC2 Code L04	For diagnosis codes, Ever For drugs, 4 or more dispensed in last 12 months
Neurologic Conditions	0/1	ICD9 Code 290.* ICD9 Code 294* ICD9 Code 310.1 ICD9 Code 331* ATC Codes N06DA02, N06DA03 ICD9 Code 358* ICD9 Code 332.[0,1] ICD9 Code 345* ICD9 Code 340 ATC Codes L03AB07, L03AB08, L04AA07 ICD9 Code 343* ICD9 Code 333.4 ICD9 Code 334* ICD9 Code 356* ICD9 Code 138 ICD9 Code 335* ICD9 Code 730.7* ICD9 V12.02	For diagnosis codes, Ever For drugs, 4 or more dispensed in last 12 months

		ICD9 Code 228.02 ICD9 Code 307.23 ICD9 Code 330.9 ICD9 Code 331.3* ICD9 Code 331.4 ICD9 Code 333* ICD9 Code 334* ICD9 Code 336* ICD9 Code 337 ICD9 Code 335.1* ICD9 Code 359.0 ICD9 Code 359.21 ICD9 Code 357.0 ICD9 Code 237.7* ICD9 Code 742.8[1,2]	
Liver Disease	0/1	ICD9 Code 070.22 ICD9 Code 070.23 ICD9 Code 070.32 ICD9 Code 070.33 ICD9 Code 070.44 ICD9 Code 070.54 ICD9 Code V02.61 ICD9 Code V02.62 ICD9 Code 571* ICD9 Code 275.1 ICD9 Code 277.4 ICD9 Code 452 ICD9 Code 453.0 ICD9 Code 571.8 ICD9 Code 571.9 ICD9 Code 572*	Ever
Overweight	0/1	Body Mass Index (BMI) 25-30	Latest measurement in last 5 years not taken during pregnancy
Thalassemia	0/1	ICD9 Code 282.4*	Ever
Type 1 Diabetes Mellitus	0/1	ICD9 Code 250._1, 250._3	Ever
Count of pre-existing conditions considered by the CDC as risk criteria	Integer	Summation of 1 point for each of the following: <ul style="list-style-type: none"> • Cancer • CKD • Heart Disease • Sickle Cell Disease • Asthma • Cerebrovascular Disease • Hypertension • Neurological Disease • Liver Disease • Thalassemia • COPD or other 	Based on the variables above

		respiratory disease <ul style="list-style-type: none"> • Type 1 or 2 Diabetes Mellitus • Solid organ transplant recipient or immunodeficiency • Obesity or severe obesity 	
--	--	--	--

¹Additional confirmation of the diagnostic codes was done by checking the matching of the free text within the diagnosis description field.

²Covariates were extracted at the beginning of the calendar month in which the index date occurred.

Table S2 – Definition of outcomes

Names, groups, potential values, definitions and time periods for all variables used in the study to define outcomes. Variables were defined using ICD9 codes. ICD: International Classification of Disease; CVA: Cerebrovascular Accident.

Variable	Values	Definitions ¹	Timing
Acute Kidney Injury	0/1	ICD9 Code 584.[5-9]*	After the index date
Anemia	0/1	ICD9 Code 28[0,1,3,4,5]*	After the index date
Appendicitis	0/1	ICD9 Code 54[0-2]* ICD9 Procedure Code 47*	After the index date
Arrhythmia	0/1	ICD9 Code 426* ICD9 Code 427*	After the index date
Arthritis or Arthropathy	0/1	ICD9 Code 713* ICD9 Code 714.9* ICD9 Code 716.[4-9]* ICD9 Code 718.9 ICD9 Code 719.[0,1,6,8,9]*	After the index date
Bell's Palsy	0/1	ICD9 Code 351.0*	After the index date
Cerebrovascular Accident	0/1	ICD9 Code 433 ICD9 Code 433.[0,1,2,3,8,9] ICD9 Code 433. [0,1,2,3,8,9]1 ICD9 Code 434* ICD9 Code 362.3[1-3] ICD9 Code 436*	After the index date
Deep Vein Thrombosis	0/1	ICD9 Code 451 ICD9 Code 451.[1-9]* ICD9 Code 453.[1,4]* ICD9 Code 453.8[0,2,3,4,5,6,7,8,9] ICD9 Code 671.[3,4]*	After the index date
Herpes Simplex	0/1	ICD9 Code 054*	After the index date
Herpes Zoster	0/1	ICD9 Code 053*	After the index date
Intracranial hemorrhage	0/1	ICD9 Code 43[0,1,2]*	After the index date
Lymphadenopathy	0/1	ICD9 Code 785.6* ICD9 Code 683* ICD9 Code 289.[2,3]*	After the index date
Lymphopenia	0/1	ICD9 Code 288.5*	After the index date
Myocardial Infarction	0/1	ICD9 Code 410*	After the index date
Myocarditis	0/1	ICD9 Code 422* ICD9 Code 429.0* ICD9 Code 398.0* ICD9 Code 391.2*	After the index date

Neutropenia	0/1	ICD9 Code 288.0 ICD9 Code 288.0[0,3,4,9]	After the index date
Other Thrombosis	0/1	ICD9 Code 444* ICD9 Code 557.[0,9]* ICD9 Code 557 ICD9 Code 452* ICD9 Code 453 ICD9 Code 453.[0,1,2,3,4,9]* ICD9 Code 453.[7,8] ICD9 Code 453.[7,8][2-9] ICD9 Code 437.6*	After the index date
Paresthesia	0/1	ICD9 Code 782.0*	After the index date
Pericarditis	0/1	ICD9 Code 420*	After the index date
Pulmonary Embolus	0/1	ICD9 Code 415.1* ICD9 Code 673.[2,8]*	After the index date
Seizures	0/1	ICD9 Code 345.[2,3]* ICD9 Code 780.3 ICD9 Code 780.39	After the index date
Syncope	0/1	ICD9 Code 780.2* ICD9 Code 992.1*	After the index date
Thrombocytopenia	0/1	ICD9 Code 287.2* ICD9 Code 287.3 ICD9 Code 287.3[0,1,3,9] ICD9 Code 287.5	After the index date
Uveitis	0/1	ICD9 Code 360.12 ICD9 Code 362.18 ICD9 Code 363.0* ICD9 Code 363.2[0,1,2] ICD9 Code 363.1* ICD9 Code 364.[0,1,2,3]* ICD9 Code 053.22 ICD9 Code 054.44 ICD9 Code 091.5* ICD9 Code 098.41 ICD9 Code 115.92	After the index date
Vertigo	0/1	ICD9 Code 780.4*	After the index date

¹Additional confirmation of the diagnostic codes was done by checking the matching of the free text within the diagnosis description field.

*Any of the possible ICD9 combinations with a match

Table S3 – Population characteristics of the eligible cohorts of vaccinated and infected individuals

Characteristics of the different study populations following application of all eligibility criteria. CDC: Centers for Disease Control and Prevention; BMI: Body mass index.

Variable	Vaccination N = 1,736,832	SARS-CoV2 Infection N = 233,392
Basic Demographics		
Age	43 (30, 60)	36 (25, 51)
Age Groups		
16-39	767703 (44%)	133052 (57%)
40-49	302438 (17%)	38944 (17%)
50-59	214697 (12%)	26958 (12%)
60-69	221997 (13%)	19453 (8.3%)
70-79	150789 (8.7%)	9902 (4.2%)
80+	79208 (4.6%)	5083 (2.2%)
Sex		
Female	851276 (49%)	126786 (54%)
Male	885556 (51%)	106606 (46%)
Population Sector		
General Jewish	1246896 (72%)	125272 (54%)
Ultra-Orthodox Jewish	57730 (3.3%)	30288 (13%)
Arab	432206 (25%)	77832 (33%)
CDC Risk Factor Count		
0	939380 (54%)	130912 (56%)
1	426563 (25%)	58317 (25%)
2	184817 (11%)	21909 (9.4%)
3	99431 (5.7%)	10893 (4.7%)
4+	86641 (5.0%)	11361 (4.9%)
Flu Vaccinations in the Last 5 Years		
0	985550 (57%)	153367 (66%)
1-2	351235 (20%)	42594 (18%)
3-4	183381 (11%)	19949 (8.5%)
5+	216666 (12%)	17482 (7.5%)
CDC “Certain” Risk Criteria		
Cancer	29900 (1.7%)	3690 (1.6%)
Chronic Kidney Disease	121728 (7.0%)	15419 (6.6%)
Chronic Obstructive Pulmonary Disease	33397 (1.9%)	3403 (1.5%)
Heart Disease	108620 (6.3%)	11227 (4.8%)
Solid Organ Transplant	1534 (<0.1%)	379 (0.2%)
Obesity (BMI 30-40)	326577 (19%)	49174 (21%)
Severe Obesity (BMI 40+)	31162 (1.8%)	5790 (2.5%)
Pregnancy	18787 (1.1%)	8666 (3.7%)
Sickle Cell Disease	520 (<0.1%)	101 (<0.1%)
Smoking	312452 (18%)	25082 (11%)

	Vaccination	SARS-CoV2 Infection
Variable	N = 1,736,832	N = 233,392
Type 2 Diabetes Mellitus	189560 (11%)	22582 (9.7%)
CDC "Possible" Risk Criteria		
Asthma	118368 (6.8%)	16636 (7.1%)
Cerebrovascular Disease	51799 (3.0%)	5571 (2.4%)
Other Respiratory Disease	5888 (0.3%)	662 (0.3%)
Hypertension	294689 (17%)	28997 (12%)
Immunosuppression	45685 (2.6%)	7608 (3.3%)
Neurological Disease	81703 (4.7%)	9672 (4.1%)
Liver Disease	31513 (1.8%)	4370 (1.9%)
Overweight (BMI 25-30)	564363 (32%)	71210 (31%)
Thalassemia	14448 (0.8%)	2705 (1.2%)
Type 1 Diabetes Mellitus	8040 (0.5%)	1272 (0.5%)

Table S4 – Outcome specific population tables for the vaccination exposure analyses

Characteristics of the different study populations for each study outcome following application of all eligibility criteria, the matching process and exclusion of patients with the outcome diagnosed before start of follow-up. CDC: Centers for Disease Control and Prevention; BMI: Body mass index.

Vaccination - Acute Kidney Injury	1, N = 912019	0, N = 912019
Age	38 (27, 52)	38 (27, 52)
Age Groups		
16-39	489056 (54%)	489056 (54%)
40-49	167811 (18%)	167811 (18%)
50-59	97958 (11%)	97958 (11%)
60-69	90159 (9.9%)	90159 (9.9%)
70-79	50375 (5.5%)	50375 (5.5%)
80+	16660 (1.8%)	16660 (1.8%)
Sex		
F	445045 (49%)	445045 (49%)
M	466974 (51%)	466974 (51%)
Population Sector		
General Jewish	612541 (67%)	612541 (67%)
Arab	274343 (30%)	274343 (30%)
Ultra-Orthodox Jewish	25135 (2.8%)	25135 (2.8%)
CDC Risk Factor Count		
0	593338 (65%)	593338 (65%)
1	210663 (23%)	210663 (23%)
2	64125 (7.0%)	64125 (7.0%)
3	26319 (2.9%)	26319 (2.9%)
4+	17574 (1.9%)	17574 (1.9%)
Flu Vaccinations in the Last 5 Years		
0	584755 (64%)	651552 (71%)
1-2	177887 (20%)	151836 (17%)
3-4	75013 (8.2%)	60389 (6.6%)
5+	74364 (8.2%)	48242 (5.3%)
Cancer	9589 (1.1%)	9927 (1.1%)
CDC "Certain" Risk Criteria		
Chronic Kidney Disease	31760 (3.5%)	32082 (3.5%)
Chronic Obstructive Pulmonary Disease	9423 (1.0%)	10756 (1.2%)
Heart Disease	28575 (3.1%)	28182 (3.1%)
Solid Organ Transplant	79 (<0.1%)	91 (<0.1%)
Obesity (BMI 30-40)	132186 (14%)	128100 (14%)
Severe Obesity (BMI 40+)	12223 (1.3%)	12912 (1.4%)
Pregnancy	6477 (0.7%)	6477 (0.7%)
Sickle Cell Disease	147 (<0.1%)	193 (<0.1%)
Smoking	163030 (18%)	193831 (21%)
Type 2 Diabetes Mellitus	58758 (6.4%)	58121 (6.4%)
Asthma	48380 (5.3%)	48697 (5.3%)
CDC "Possible" Risk Criteria		
Cerebrovascular Disease	13385 (1.5%)	13952 (1.5%)
Other Respiratory Disease	1870 (0.2%)	1917 (0.2%)
Hypertension	89760 (9.8%)	88379 (9.7%)
Immunosuppression	15486 (1.7%)	15404 (1.7%)
Neurological Disease	26588 (2.9%)	28726 (3.1%)
Liver Disease	10390 (1.1%)	12474 (1.4%)
Overweight (BMI 25-30)	292720 (32%)	278854 (31%)
Thalassemia	6248 (0.7%)	6032 (0.7%)
Type 1 Diabetes Mellitus	2635 (0.3%)	2458 (0.3%)

Vaccination - Anemia	1, N = 709267	0, N = 709267
Age	38 (28, 52)	38 (28, 52)
Age Groups		
16-39	378506 (53%)	378506 (53%)
40-49	132121 (19%)	132121 (19%)
50-59	74741 (11%)	74741 (11%)
60-69	71191 (10%)	71191 (10%)
70-79	40872 (5.8%)	40872 (5.8%)
80+	11836 (1.7%)	11836 (1.7%)
Sex		
F	290815 (41%)	290815 (41%)
M	418452 (59%)	418452 (59%)
Population Sector		
General Jewish	482555 (68%)	482555 (68%)
Arab	207738 (29%)	207738 (29%)
Ultra-Orthodox Jewish	18974 (2.7%)	18974 (2.7%)
CDC Risk Factor Count		
0	473463 (67%)	473463 (67%)
1	157270 (22%)	157270 (22%)
2	46725 (6.6%)	46725 (6.6%)
3	18985 (2.7%)	18985 (2.7%)
4+	12824 (1.8%)	12824 (1.8%)
Flu Vaccinations in the Last 5 Years		
0	464459 (65%)	516885 (73%)
1-2	133834 (19%)	112551 (16%)
3-4	55861 (7.9%)	44351 (6.3%)
5+	55113 (7.8%)	35480 (5.0%)
Cancer	6332 (0.9%)	6536 (0.9%)
CDC "Certain" Risk Criteria		
Chronic Kidney Disease	27391 (3.9%)	27573 (3.9%)
Chronic Obstructive Pulmonary Disease	7152 (1.0%)	8077 (1.1%)
Heart Disease	21719 (3.1%)	21309 (3.0%)
Solid Organ Transplant	121 (<0.1%)	118 (<0.1%)
Obesity (BMI 30-40)	98289 (14%)	95285 (13%)
Severe Obesity (BMI 40+)	8181 (1.2%)	8708 (1.2%)
Pregnancy	3610 (0.5%)	3610 (0.5%)
Sickle Cell Disease	47 (<0.1%)	54 (<0.1%)
Smoking	140625 (20%)	167657 (24%)
Type 2 Diabetes Mellitus	42859 (6.0%)	42679 (6.0%)
Asthma	34636 (4.9%)	34816 (4.9%)
CDC "Possible" Risk Criteria		
Cerebrovascular Disease	9567 (1.3%)	10131 (1.4%)
Other Respiratory Disease	1233 (0.2%)	1255 (0.2%)
Hypertension	68501 (9.7%)	67274 (9.5%)
Immunosuppression	10013 (1.4%)	9985 (1.4%)
Neurological Disease	18763 (2.6%)	20242 (2.9%)
Liver Disease	7370 (1.0%)	9044 (1.3%)
Overweight (BMI 25-30)	236087 (33%)	224147 (32%)
Thalassemia	1708 (0.2%)	1600 (0.2%)
Type 1 Diabetes Mellitus	1859 (0.3%)	1719 (0.2%)

Vaccination - Appendicitis	1, N = 900289	0, N = 900289
Age	39 (27, 54)	39 (27, 54)
Age Groups		
16-39	468768 (52%)	468768 (52%)
40-49	161965 (18%)	161965 (18%)
50-59	96480 (11%)	96480 (11%)
60-69	92819 (10%)	92819 (10%)
70-79	57000 (6.3%)	57000 (6.3%)
80+	23257 (2.6%)	23257 (2.6%)
Sex		
F	436944 (49%)	436944 (49%)
M	463345 (51%)	463345 (51%)
Population Sector		
General Jewish	610280 (68%)	610280 (68%)
Arab	265277 (29%)	265277 (29%)
Ultra-Orthodox Jewish	24732 (2.7%)	24732 (2.7%)
CDC Risk Factor Count		
0	571838 (64%)	571838 (64%)
1	204403 (23%)	204403 (23%)
2	65806 (7.3%)	65806 (7.3%)
3	30228 (3.4%)	30228 (3.4%)
4+	28014 (3.1%)	28014 (3.1%)
Flu Vaccinations in the Last 5 Years		
0	563756 (63%)	629093 (70%)
1-2	174874 (19%)	150955 (17%)
3-4	77698 (8.6%)	64324 (7.1%)
5+	83961 (9.3%)	55917 (6.2%)
Cancer	10922 (1.2%)	11268 (1.3%)
CDC "Certain" Risk Criteria		
Chronic Kidney Disease	43273 (4.8%)	43750 (4.9%)
Chronic Obstructive Pulmonary Disease	11330 (1.3%)	12947 (1.4%)
Heart Disease	37082 (4.1%)	36727 (4.1%)
Solid Organ Transplant	430 (<0.1%)	441 (<0.1%)
Obesity (BMI 30-40)	134667 (15%)	130431 (14%)
Severe Obesity (BMI 40+)	12487 (1.4%)	13224 (1.5%)
Pregnancy	6150 (0.7%)	6150 (0.7%)
Sickle Cell Disease	139 (<0.1%)	186 (<0.1%)
Smoking	158648 (18%)	188654 (21%)
Type 2 Diabetes Mellitus	68226 (7.6%)	67359 (7.5%)
Asthma	48019 (5.3%)	48382 (5.4%)
CDC "Possible" Risk Criteria		
Cerebrovascular Disease	17057 (1.9%)	17810 (2.0%)
Other Respiratory Disease	2070 (0.2%)	2191 (0.2%)
Hypertension	104841 (12%)	103168 (11%)
Immunosuppression	16747 (1.9%)	16745 (1.9%)
Neurological Disease	29009 (3.2%)	31442 (3.5%)
Liver Disease	11222 (1.2%)	13413 (1.5%)
Overweight (BMI 25-30)	290839 (32%)	276980 (31%)
Thalassemia	6109 (0.7%)	5850 (0.6%)
Type 1 Diabetes Mellitus	2965 (0.3%)	2859 (0.3%)

Vaccination - Arrhythmia	1, N = 856152	0, N = 856152
Age	37 (27, 50)	37 (27, 50)
Age Groups		
16-39	472763 (55%)	472763 (55%)
40-49	159852 (19%)	159852 (19%)
50-59	90905 (11%)	90905 (11%)
60-69	79822 (9.3%)	79822 (9.3%)
70-79	41101 (4.8%)	41101 (4.8%)
80+	11709 (1.4%)	11709 (1.4%)
Sex		
F	411326 (48%)	411326 (48%)
M	444826 (52%)	444826 (52%)
Population Sector		
General Jewish	569433 (67%)	569433 (67%)
Arab	262974 (31%)	262974 (31%)
Ultra-Orthodox Jewish	23745 (2.8%)	23745 (2.8%)
CDC Risk Factor Count		
0	570214 (67%)	570214 (67%)
1	195900 (23%)	195900 (23%)
2	54924 (6.4%)	54924 (6.4%)
3	21065 (2.5%)	21065 (2.5%)
4+	14049 (1.6%)	14049 (1.6%)
Flu Vaccinations in the Last 5 Years		
0	562329 (66%)	625195 (73%)
1-2	165862 (19%)	139661 (16%)
3-4	66594 (7.8%)	52409 (6.1%)
5+	61367 (7.2%)	38887 (4.5%)
Cancer	8243 (1.0%)	8572 (1.0%)
CDC "Certain" Risk Criteria		
Chronic Kidney Disease	32943 (3.8%)	33440 (3.9%)
Chronic Obstructive Pulmonary Disease	7638 (0.9%)	8589 (1.0%)
Heart Disease	19746 (2.3%)	19389 (2.3%)
Solid Organ Transplant	263 (<0.1%)	280 (<0.1%)
Obesity (BMI 30-40)	119833 (14%)	116146 (14%)
Severe Obesity (BMI 40+)	11046 (1.3%)	11574 (1.4%)
Pregnancy	6135 (0.7%)	6135 (0.7%)
Sickle Cell Disease	141 (<0.1%)	173 (<0.1%)
Smoking	154406 (18%)	183742 (21%)
Type 2 Diabetes Mellitus	50542 (5.9%)	49989 (5.8%)
Asthma	44235 (5.2%)	44615 (5.2%)
CDC "Possible" Risk Criteria		
Cerebrovascular Disease	10244 (1.2%)	10690 (1.2%)
Other Respiratory Disease	1452 (0.2%)	1517 (0.2%)
Hypertension	73297 (8.6%)	72015 (8.4%)
Immunosuppression	13542 (1.6%)	13514 (1.6%)
Neurological Disease	22440 (2.6%)	24317 (2.8%)
Liver Disease	9125 (1.1%)	11024 (1.3%)
Overweight (BMI 25-30)	273003 (32%)	259977 (30%)
Thalassemia	5779 (0.7%)	5533 (0.6%)
Type 1 Diabetes Mellitus	2460 (0.3%)	2297 (0.3%)

Vaccination - Arthritis or Arthropathy	1, N = 731340	0, N = 731340
Age	35 (25, 46)	35 (25, 46)
Age Groups		
16-39	448546 (61%)	448546 (61%)
40-49	130306 (18%)	130306 (18%)
50-59	63981 (8.7%)	63981 (8.7%)
60-69	51771 (7.1%)	51771 (7.1%)
70-79	28249 (3.9%)	28249 (3.9%)
80+	8487 (1.2%)	8487 (1.2%)
Sex		
F	346106 (47%)	346106 (47%)
M	385234 (53%)	385234 (53%)
Population Sector		
General Jewish	480327 (66%)	480327 (66%)
Arab	229072 (31%)	229072 (31%)
Ultra-Orthodox Jewish	21941 (3.0%)	21941 (3.0%)
CDC Risk Factor Count		
0	515882 (71%)	515882 (71%)
1	157915 (22%)	157915 (22%)
2	36266 (5.0%)	36266 (5.0%)
3	12581 (1.7%)	12581 (1.7%)
4+	8696 (1.2%)	8696 (1.2%)
Flu Vaccinations in the Last 5 Years		
0	500320 (68%)	554137 (76%)
1-2	138956 (19%)	113911 (16%)
3-4	49618 (6.8%)	37142 (5.1%)
5+	42446 (5.8%)	26150 (3.6%)
Cancer	5949 (0.8%)	5959 (0.8%)
CDC "Certain" Risk Criteria		
Chronic Kidney Disease	23194 (3.2%)	23590 (3.2%)
Chronic Obstructive Pulmonary Disease	4636 (0.6%)	5400 (0.7%)
Heart Disease	16262 (2.2%)	16106 (2.2%)
Solid Organ Transplant	182 (<0.1%)	198 (<0.1%)
Obesity (BMI 30-40)	88475 (12%)	85992 (12%)
Severe Obesity (BMI 40+)	7752 (1.1%)	7934 (1.1%)
Pregnancy	5856 (0.8%)	5856 (0.8%)
Sickle Cell Disease	124 (<0.1%)	155 (<0.1%)
Smoking	125812 (17%)	151157 (21%)
Type 2 Diabetes Mellitus	31758 (4.3%)	31362 (4.3%)
Asthma	36988 (5.1%)	37045 (5.1%)
CDC "Possible" Risk Criteria		
Cerebrovascular Disease	6874 (0.9%)	7341 (1.0%)
Other Respiratory Disease	965 (0.1%)	973 (0.1%)
Hypertension	49305 (6.7%)	48552 (6.6%)
Immunosuppression	7360 (1.0%)	7322 (1.0%)
Neurological Disease	15157 (2.1%)	16549 (2.3%)
Liver Disease	6118 (0.8%)	7446 (1.0%)
Overweight (BMI 25-30)	225398 (31%)	214162 (29%)
Thalassemia	4834 (0.7%)	4692 (0.6%)
Type 1 Diabetes Mellitus	1894 (0.3%)	1725 (0.2%)

Vaccination - Bell's Palsy	1, N = 923692	0, N = 923692
Age	38 (27, 53)	38 (27, 53)
Age Groups		
16-39	485139 (53%)	485139 (53%)
40-49	166488 (18%)	166488 (18%)
50-59	97887 (11%)	97887 (11%)
60-69	93451 (10%)	93451 (10%)
70-79	57237 (6.2%)	57237 (6.2%)
80+	23490 (2.5%)	23490 (2.5%)
Sex		
F	447068 (48%)	447068 (48%)
M	476624 (52%)	476624 (52%)
Population Sector		
General Jewish	625923 (68%)	625923 (68%)
Arab	272537 (30%)	272537 (30%)
Ultra-Orthodox Jewish	25232 (2.7%)	25232 (2.7%)
CDC Risk Factor Count		
0	588934 (64%)	588934 (64%)
1	209908 (23%)	209908 (23%)
2	66770 (7.2%)	66770 (7.2%)
3	30303 (3.3%)	30303 (3.3%)
4+	27777 (3.0%)	27777 (3.0%)
Flu Vaccinations in the Last 5 Years		
0	580442 (63%)	647411 (70%)
1-2	179318 (19%)	154587 (17%)
3-4	79098 (8.6%)	65248 (7.1%)
5+	84834 (9.2%)	56446 (6.1%)
Cancer	11145 (1.2%)	11510 (1.2%)
CDC "Certain" Risk Criteria		
Chronic Kidney Disease	44291 (4.8%)	44854 (4.9%)
Chronic Obstructive Pulmonary Disease	11500 (1.2%)	13022 (1.4%)
Heart Disease	37316 (4.0%)	37083 (4.0%)
Solid Organ Transplant	431 (<0.1%)	451 (<0.1%)
Obesity (BMI 30-40)	137159 (15%)	132873 (14%)
Severe Obesity (BMI 40+)	12577 (1.4%)	13390 (1.4%)
Pregnancy	6396 (0.7%)	6396 (0.7%)
Sickle Cell Disease	150 (<0.1%)	192 (<0.1%)
Smoking	163850 (18%)	194728 (21%)
Type 2 Diabetes Mellitus	68114 (7.4%)	67195 (7.3%)
Asthma	49650 (5.4%)	50082 (5.4%)
CDC "Possible" Risk Criteria		
Cerebrovascular Disease	16572 (1.8%)	17255 (1.9%)
Other Respiratory Disease	2122 (0.2%)	2222 (0.2%)
Hypertension	105348 (11%)	103788 (11%)
Immunosuppression	16999 (1.8%)	16990 (1.8%)
Neurological Disease	28901 (3.1%)	31076 (3.4%)
Liver Disease	11508 (1.2%)	13758 (1.5%)
Overweight (BMI 25-30)	297793 (32%)	283856 (31%)
Thalassemia	6311 (0.7%)	6030 (0.7%)
Type 1 Diabetes Mellitus	3030 (0.3%)	2870 (0.3%)

Vaccination - Cerebrovascular Accident	1, N = 917598	0, N = 917598
Age	38 (27, 52)	38 (27, 52)
Age Groups		
16-39	489938 (53%)	489938 (53%)
40-49	168245 (18%)	168245 (18%)
50-59	97957 (11%)	97957 (11%)
60-69	90432 (9.9%)	90432 (9.9%)
70-79	52327 (5.7%)	52327 (5.7%)
80+	18699 (2.0%)	18699 (2.0%)
Sex		
F	444722 (48%)	444722 (48%)
M	472876 (52%)	472876 (52%)
Population Sector		
General Jewish	617674 (67%)	617674 (67%)
Arab	274703 (30%)	274703 (30%)
Ultra-Orthodox Jewish	25221 (2.7%)	25221 (2.7%)
CDC Risk Factor Count		
0	594693 (65%)	594693 (65%)
1	212087 (23%)	212087 (23%)
2	65207 (7.1%)	65207 (7.1%)
3	27075 (3.0%)	27075 (3.0%)
4+	18536 (2.0%)	18536 (2.0%)
Flu Vaccinations in the Last 5 Years		
0	585883 (64%)	652896 (71%)
1-2	178363 (19%)	152336 (17%)
3-4	75820 (8.3%)	61421 (6.7%)
5+	77532 (8.4%)	50945 (5.6%)
Cancer	10137 (1.1%)	10573 (1.2%)
CDC "Certain" Risk Criteria		
Chronic Kidney Disease	39913 (4.3%)	40542 (4.4%)
Chronic Obstructive Pulmonary Disease	9740 (1.1%)	11098 (1.2%)
Heart Disease	30838 (3.4%)	30638 (3.3%)
Solid Organ Transplant	353 (<0.1%)	382 (<0.1%)
Obesity (BMI 30-40)	133851 (15%)	129871 (14%)
Severe Obesity (BMI 40+)	12324 (1.3%)	13150 (1.4%)
Pregnancy	6481 (0.7%)	6481 (0.7%)
Sickle Cell Disease	147 (<0.1%)	199 (<0.1%)
Smoking	162950 (18%)	193910 (21%)
Type 2 Diabetes Mellitus	61321 (6.7%)	60610 (6.6%)
Asthma	48567 (5.3%)	48985 (5.3%)
CDC "Possible" Risk Criteria		
Cerebrovascular Disease	3818 (0.4%)	3568 (0.4%)
Other Respiratory Disease	1900 (0.2%)	1995 (0.2%)
Hypertension	93691 (10%)	92213 (10%)
Immunosuppression	16079 (1.8%)	16129 (1.8%)
Neurological Disease	25360 (2.8%)	27188 (3.0%)
Liver Disease	10719 (1.2%)	12840 (1.4%)
Overweight (BMI 25-30)	295281 (32%)	281204 (31%)
Thalassemia	6253 (0.7%)	6004 (0.7%)
Type 1 Diabetes Mellitus	2776 (0.3%)	2606 (0.3%)

Vaccination - Deep Vein Thrombosis	1, N = 925380	0, N = 925380
Age	38 (27, 53)	38 (27, 53)
Age Groups		
16-39	488386 (53%)	488386 (53%)
40-49	166964 (18%)	166964 (18%)
50-59	97920 (11%)	97920 (11%)
60-69	93149 (10%)	93149 (10%)
70-79	56359 (6.1%)	56359 (6.1%)
80+	22602 (2.4%)	22602 (2.4%)
Sex		
F	445956 (48%)	445956 (48%)
M	479424 (52%)	479424 (52%)
Population Sector		
General Jewish	625367 (68%)	625367 (68%)
Arab	274876 (30%)	274876 (30%)
Ultra-Orthodox Jewish	25137 (2.7%)	25137 (2.7%)
CDC Risk Factor Count		
0	591315 (64%)	591315 (64%)
1	210567 (23%)	210567 (23%)
2	66417 (7.2%)	66417 (7.2%)
3	29987 (3.2%)	29987 (3.2%)
4+	27094 (2.9%)	27094 (2.9%)
Flu Vaccinations in the Last 5 Years		
0	583669 (63%)	650639 (70%)
1-2	179549 (19%)	154514 (17%)
3-4	78604 (8.5%)	64691 (7.0%)
5+	83558 (9.0%)	55536 (6.0%)
Cancer	10796 (1.2%)	11229 (1.2%)
CDC "Certain" Risk Criteria		
Chronic Kidney Disease	43720 (4.7%)	44311 (4.8%)
Chronic Obstructive Pulmonary Disease	11186 (1.2%)	12726 (1.4%)
Heart Disease	36563 (4.0%)	36302 (3.9%)
Solid Organ Transplant	399 (<0.1%)	413 (<0.1%)
Obesity (BMI 30-40)	136501 (15%)	132162 (14%)
Severe Obesity (BMI 40+)	12431 (1.3%)	13198 (1.4%)
Pregnancy	6408 (0.7%)	6408 (0.7%)
Sickle Cell Disease	149 (<0.1%)	194 (<0.1%)
Smoking	164356 (18%)	195556 (21%)
Type 2 Diabetes Mellitus	67836 (7.3%)	67034 (7.2%)
Asthma	49609 (5.4%)	50029 (5.4%)
CDC "Possible" Risk Criteria		
Cerebrovascular Disease	16721 (1.8%)	17407 (1.9%)
Other Respiratory Disease	2062 (0.2%)	2166 (0.2%)
Hypertension	104044 (11%)	102382 (11%)
Immunosuppression	16842 (1.8%)	16789 (1.8%)
Neurological Disease	29158 (3.2%)	31410 (3.4%)
Liver Disease	11312 (1.2%)	13468 (1.5%)
Overweight (BMI 25-30)	298524 (32%)	284433 (31%)
Thalassemia	6337 (0.7%)	6076 (0.7%)
Type 1 Diabetes Mellitus	3037 (0.3%)	2884 (0.3%)

Vaccination - Herpes Simplex	1, N = 876328	0, N = 876328
Age	38 (27, 54)	38 (27, 54)
Age Groups		
16-39	457385 (52%)	457385 (52%)
40-49	158016 (18%)	158016 (18%)
50-59	93832 (11%)	93832 (11%)
60-69	89988 (10%)	89988 (10%)
70-79	54764 (6.2%)	54764 (6.2%)
80+	22343 (2.5%)	22343 (2.5%)
Sex		
F	413311 (47%)	413311 (47%)
M	463017 (53%)	463017 (53%)
Population Sector		
General Jewish	589215 (67%)	589215 (67%)
Arab	263396 (30%)	263396 (30%)
Ultra-Orthodox Jewish	23717 (2.7%)	23717 (2.7%)
CDC Risk Factor Count		
0	557374 (64%)	557374 (64%)
1	198627 (23%)	198627 (23%)
2	63686 (7.3%)	63686 (7.3%)
3	29287 (3.3%)	29287 (3.3%)
4+	27354 (3.1%)	27354 (3.1%)
Flu Vaccinations in the Last 5 Years		
0	552856 (63%)	615939 (70%)
1-2	168845 (19%)	145511 (17%)
3-4	74736 (8.5%)	61586 (7.0%)
5+	79891 (9.1%)	53292 (6.1%)
Cancer	10479 (1.2%)	10895 (1.2%)
CDC "Certain" Risk Criteria		
Chronic Kidney Disease	42482 (4.8%)	42971 (4.9%)
Chronic Obstructive Pulmonary Disease	11090 (1.3%)	12576 (1.4%)
Heart Disease	36291 (4.1%)	36095 (4.1%)
Solid Organ Transplant	398 (<0.1%)	427 (<0.1%)
Obesity (BMI 30-40)	131038 (15%)	126822 (14%)
Severe Obesity (BMI 40+)	12127 (1.4%)	12838 (1.5%)
Pregnancy	5633 (0.6%)	5633 (0.6%)
Sickle Cell Disease	143 (<0.1%)	184 (<0.1%)
Smoking	157424 (18%)	186967 (21%)
Type 2 Diabetes Mellitus	66380 (7.6%)	65352 (7.5%)
Asthma	46230 (5.3%)	46650 (5.3%)
CDC "Possible" Risk Criteria		
Cerebrovascular Disease	16636 (1.9%)	17399 (2.0%)
Other Respiratory Disease	1987 (0.2%)	2067 (0.2%)
Hypertension	101551 (12%)	100051 (11%)
Immunosuppression	15968 (1.8%)	15982 (1.8%)
Neurological Disease	28095 (3.2%)	30279 (3.5%)
Liver Disease	10970 (1.3%)	13162 (1.5%)
Overweight (BMI 25-30)	283945 (32%)	270641 (31%)
Thalassemia	5968 (0.7%)	5713 (0.7%)
Type 1 Diabetes Mellitus	2923 (0.3%)	2779 (0.3%)

Vaccination - Intracranial Hemorrhage	1, N = 933130	0, N = 933130
Age	38 (27, 53)	38 (27, 53)
Age Groups		
16-39	489826 (52%)	489826 (52%)
40-49	168787 (18%)	168787 (18%)
50-59	99542 (11%)	99542 (11%)
60-69	94713 (10%)	94713 (10%)
70-79	57334 (6.1%)	57334 (6.1%)
80+	22928 (2.5%)	22928 (2.5%)
Sex		
F	452242 (48%)	452242 (48%)
M	480888 (52%)	480888 (52%)
Population Sector		
General Jewish	630875 (68%)	630875 (68%)
Arab	276792 (30%)	276792 (30%)
Ultra-Orthodox Jewish	25463 (2.7%)	25463 (2.7%)
CDC Risk Factor Count		
0	594395 (64%)	594395 (64%)
1	213221 (23%)	213221 (23%)
2	68028 (7.3%)	68028 (7.3%)
3	30653 (3.3%)	30653 (3.3%)
4+	26833 (2.9%)	26833 (2.9%)
Flu Vaccinations in the Last 5 Years		
0	586791 (63%)	654438 (70%)
1-2	181389 (19%)	156310 (17%)
3-4	79860 (8.6%)	65850 (7.1%)
5+	85090 (9.1%)	56532 (6.1%)
Cancer	11174 (1.2%)	11584 (1.2%)
CDC "Certain" Risk Criteria		
Chronic Kidney Disease	44380 (4.8%)	44979 (4.8%)
Chronic Obstructive Pulmonary Disease	11420 (1.2%)	13007 (1.4%)
Heart Disease	36962 (4.0%)	36743 (3.9%)
Solid Organ Transplant	425 (<0.1%)	454 (<0.1%)
Obesity (BMI 30-40)	139288 (15%)	134986 (14%)
Severe Obesity (BMI 40+)	12862 (1.4%)	13713 (1.5%)
Pregnancy	6489 (0.7%)	6489 (0.7%)
Sickle Cell Disease	149 (<0.1%)	199 (<0.1%)
Smoking	165514 (18%)	196863 (21%)
Type 2 Diabetes Mellitus	68884 (7.4%)	67981 (7.3%)
Asthma	50153 (5.4%)	50512 (5.4%)
CDC "Possible" Risk Criteria		
Cerebrovascular Disease	14273 (1.5%)	14712 (1.6%)
Other Respiratory Disease	2123 (0.2%)	2237 (0.2%)
Hypertension	105603 (11%)	104036 (11%)
Immunosuppression	17358 (1.9%)	17449 (1.9%)
Neurological Disease	28945 (3.1%)	31125 (3.3%)
Liver Disease	11654 (1.2%)	13886 (1.5%)
Overweight (BMI 25-30)	301154 (32%)	286985 (31%)
Thalassemia	6401 (0.7%)	6130 (0.7%)
Type 1 Diabetes Mellitus	3064 (0.3%)	2922 (0.3%)

Vaccination - Lymphadenopathy	1, N = 823006	0, N = 823006
Age	39 (28, 54)	39 (28, 54)
Age Groups		
16-39	423244 (51%)	423244 (51%)
40-49	149746 (18%)	149746 (18%)
50-59	89506 (11%)	89506 (11%)
60-69	85722 (10%)	85722 (10%)
70-79	52864 (6.4%)	52864 (6.4%)
80+	21924 (2.7%)	21924 (2.7%)
Sex		
F	386928 (47%)	386928 (47%)
M	436078 (53%)	436078 (53%)
Population Sector		
General Jewish	551309 (67%)	551309 (67%)
Arab	249380 (30%)	249380 (30%)
Ultra-Orthodox Jewish	22317 (2.7%)	22317 (2.7%)
CDC Risk Factor Count		
0	523301 (64%)	523301 (64%)
1	186501 (23%)	186501 (23%)
2	60170 (7.3%)	60170 (7.3%)
3	27721 (3.4%)	27721 (3.4%)
4+	25313 (3.1%)	25313 (3.1%)
Flu Vaccinations in the Last 5 Years		
0	519933 (63%)	578854 (70%)
1-2	157483 (19%)	136012 (17%)
3-4	69993 (8.5%)	57830 (7.0%)
5+	75597 (9.2%)	50310 (6.1%)
Cancer	9311 (1.1%)	9544 (1.2%)
CDC "Certain" Risk Criteria		
Chronic Kidney Disease	39653 (4.8%)	40047 (4.9%)
Chronic Obstructive Pulmonary Disease	10161 (1.2%)	11546 (1.4%)
Heart Disease	34420 (4.2%)	34084 (4.1%)
Solid Organ Transplant	379 (<0.1%)	384 (<0.1%)
Obesity (BMI 30-40)	124199 (15%)	120273 (15%)
Severe Obesity (BMI 40+)	11385 (1.4%)	12174 (1.5%)
Pregnancy	5160 (0.6%)	5160 (0.6%)
Sickle Cell Disease	122 (<0.1%)	159 (<0.1%)
Smoking	146749 (18%)	174346 (21%)
Type 2 Diabetes Mellitus	62891 (7.6%)	62040 (7.5%)
Asthma	41806 (5.1%)	42015 (5.1%)
CDC "Possible" Risk Criteria		
Cerebrovascular Disease	15609 (1.9%)	16378 (2.0%)
Other Respiratory Disease	1804 (0.2%)	1832 (0.2%)
Hypertension	96251 (12%)	95078 (12%)
Immunosuppression	14617 (1.8%)	14557 (1.8%)
Neurological Disease	26403 (3.2%)	28402 (3.5%)
Liver Disease	10135 (1.2%)	12220 (1.5%)
Overweight (BMI 25-30)	270297 (33%)	257477 (31%)
Thalassemia	5367 (0.7%)	5164 (0.6%)
Type 1 Diabetes Mellitus	2703 (0.3%)	2577 (0.3%)

Vaccination - Lymphopenia	1, N = 938939	0, N = 938939
Age	38 (27, 54)	38 (27, 54)
Age Groups		
16-39	490003 (52%)	490003 (52%)
40-49	169010 (18%)	169010 (18%)
50-59	100038 (11%)	100038 (11%)
60-69	96186 (10%)	96186 (10%)
70-79	59181 (6.3%)	59181 (6.3%)
80+	24521 (2.6%)	24521 (2.6%)
Sex		
F	454318 (48%)	454318 (48%)
M	484621 (52%)	484621 (52%)
Population Sector		
General Jewish	635654 (68%)	635654 (68%)
Arab	277732 (30%)	277732 (30%)
Ultra-Orthodox Jewish	25553 (2.7%)	25553 (2.7%)
CDC Risk Factor Count		
0	594357 (63%)	594357 (63%)
1	213850 (23%)	213850 (23%)
2	69054 (7.4%)	69054 (7.4%)
3	31863 (3.4%)	31863 (3.4%)
4+	29815 (3.2%)	29815 (3.2%)
Flu Vaccinations in the Last 5 Years		
0	587418 (63%)	655268 (70%)
1-2	182439 (19%)	157729 (17%)
3-4	81262 (8.7%)	67310 (7.2%)
5+	87820 (9.4%)	58632 (6.2%)
Cancer	11470 (1.2%)	11895 (1.3%)
CDC "Certain" Risk Criteria		
Chronic Kidney Disease	46022 (4.9%)	46616 (5.0%)
Chronic Obstructive Pulmonary Disease	12021 (1.3%)	13642 (1.5%)
Heart Disease	39157 (4.2%)	38877 (4.1%)
Solid Organ Transplant	438 (<0.1%)	468 (<0.1%)
Obesity (BMI 30-40)	141236 (15%)	136765 (15%)
Severe Obesity (BMI 40+)	13067 (1.4%)	13862 (1.5%)
Pregnancy	6479 (0.7%)	6479 (0.7%)
Sickle Cell Disease	152 (<0.1%)	199 (<0.1%)
Smoking	166630 (18%)	198139 (21%)
Type 2 Diabetes Mellitus	71518 (7.6%)	70563 (7.5%)
Asthma	50697 (5.4%)	51014 (5.4%)
CDC "Possible" Risk Criteria		
Cerebrovascular Disease	18068 (1.9%)	18868 (2.0%)
Other Respiratory Disease	2209 (0.2%)	2302 (0.2%)
Hypertension	109865 (12%)	108227 (12%)
Immunosuppression	17754 (1.9%)	17794 (1.9%)
Neurological Disease	30679 (3.3%)	33095 (3.5%)
Liver Disease	11916 (1.3%)	14193 (1.5%)
Overweight (BMI 25-30)	303430 (32%)	289245 (31%)
Thalassemia	6453 (0.7%)	6173 (0.7%)
Type 1 Diabetes Mellitus	3159 (0.3%)	3023 (0.3%)

Vaccination - Myocardial Infarction	1, N = 892785	0, N = 892785
Age	37 (27, 51)	37 (27, 51)
Age Groups		
16-39	489947 (55%)	489947 (55%)
40-49	167071 (19%)	167071 (19%)
50-59	94233 (11%)	94233 (11%)
60-69	82170 (9.2%)	82170 (9.2%)
70-79	44550 (5.0%)	44550 (5.0%)
80+	14814 (1.7%)	14814 (1.7%)
Sex		
F	440552 (49%)	440552 (49%)
M	452233 (51%)	452233 (51%)
Population Sector		
General Jewish	597758 (67%)	597758 (67%)
Arab	270182 (30%)	270182 (30%)
Ultra-Orthodox Jewish	24845 (2.8%)	24845 (2.8%)
CDC Risk Factor Count		
0	594125 (67%)	594125 (67%)
1	208261 (23%)	208261 (23%)
2	59266 (6.6%)	59266 (6.6%)
3	20893 (2.3%)	20893 (2.3%)
4+	10240 (1.1%)	10240 (1.1%)
Flu Vaccinations in the Last 5 Years		
0	583464 (65%)	649445 (73%)
1-2	173367 (19%)	146037 (16%)
3-4	69825 (7.8%)	55078 (6.2%)
5+	66129 (7.4%)	42225 (4.7%)
Cancer	8798 (1.0%)	9047 (1.0%)
CDC "Certain" Risk Criteria		
Chronic Kidney Disease	33677 (3.8%)	34113 (3.8%)
Chronic Obstructive Pulmonary Disease	7392 (0.8%)	8265 (0.9%)
Heart Disease	4027 (0.5%)	4355 (0.5%)
Solid Organ Transplant	251 (<0.1%)	243 (<0.1%)
Obesity (BMI 30-40)	125751 (14%)	121904 (14%)
Severe Obesity (BMI 40+)	11784 (1.3%)	12418 (1.4%)
Pregnancy	6489 (0.7%)	6489 (0.7%)
Sickle Cell Disease	147 (<0.1%)	186 (<0.1%)
Smoking	158117 (18%)	188323 (21%)
Type 2 Diabetes Mellitus	50033 (5.6%)	49329 (5.5%)
Asthma	46948 (5.3%)	47116 (5.3%)
CDC "Possible" Risk Criteria		
Cerebrovascular Disease	10593 (1.2%)	10930 (1.2%)
Other Respiratory Disease	1609 (0.2%)	1688 (0.2%)
Hypertension	77365 (8.7%)	76065 (8.5%)
Immunosuppression	14441 (1.6%)	14326 (1.6%)
Neurological Disease	24602 (2.8%)	26534 (3.0%)
Liver Disease	9494 (1.1%)	11417 (1.3%)
Overweight (BMI 25-30)	284357 (32%)	270784 (30%)
Thalassemia	6096 (0.7%)	5871 (0.7%)
Type 1 Diabetes Mellitus	2465 (0.3%)	2259 (0.3%)

Vaccination - Myocarditis	1, N = 938812	0, N = 938812
Age	38 (27, 54)	38 (27, 54)
Age Groups		
16-39	489880 (52%)	489880 (52%)
40-49	168875 (18%)	168875 (18%)
50-59	99993 (11%)	99993 (11%)
60-69	96217 (10%)	96217 (10%)
70-79	59262 (6.3%)	59262 (6.3%)
80+	24585 (2.6%)	24585 (2.6%)
Sex		
F	454896 (48%)	454896 (48%)
M	483916 (52%)	483916 (52%)
Population Sector		
General Jewish	635672 (68%)	635672 (68%)
Arab	277585 (30%)	277585 (30%)
Ultra-Orthodox Jewish	25555 (2.7%)	25555 (2.7%)
CDC Risk Factor Count		
0	594344 (63%)	594344 (63%)
1	213762 (23%)	213762 (23%)
2	69030 (7.4%)	69030 (7.4%)
3	31856 (3.4%)	31856 (3.4%)
4+	29820 (3.2%)	29820 (3.2%)
Flu Vaccinations in the Last 5 Years		
0	587199 (63%)	655035 (70%)
1-2	182407 (19%)	157737 (17%)
3-4	81303 (8.7%)	67368 (7.2%)
5+	87903 (9.4%)	58672 (6.2%)
Cancer	11537 (1.2%)	11944 (1.3%)
CDC "Certain" Risk Criteria		
Chronic Kidney Disease	46024 (4.9%)	46624 (5.0%)
Chronic Obstructive Pulmonary Disease	12028 (1.3%)	13645 (1.5%)
Heart Disease	38936 (4.1%)	38673 (4.1%)
Solid Organ Transplant	450 (<0.1%)	477 (<0.1%)
Obesity (BMI 30-40)	141094 (15%)	136647 (15%)
Severe Obesity (BMI 40+)	13065 (1.4%)	13850 (1.5%)
Pregnancy	6483 (0.7%)	6483 (0.7%)
Sickle Cell Disease	151 (<0.1%)	199 (<0.1%)
Smoking	166411 (18%)	197854 (21%)
Type 2 Diabetes Mellitus	71521 (7.6%)	70559 (7.5%)
Asthma	50702 (5.4%)	51019 (5.4%)
CDC "Possible" Risk Criteria		
Cerebrovascular Disease	18100 (1.9%)	18896 (2.0%)
Other Respiratory Disease	2218 (0.2%)	2308 (0.2%)
Hypertension	109878 (12%)	108188 (12%)
Immunosuppression	17785 (1.9%)	17830 (1.9%)
Neurological Disease	30740 (3.3%)	33171 (3.5%)
Liver Disease	11960 (1.3%)	14254 (1.5%)
Overweight (BMI 25-30)	303236 (32%)	288972 (31%)
Thalassemia	6460 (0.7%)	6178 (0.7%)
Type 1 Diabetes Mellitus	3167 (0.3%)	3033 (0.3%)

Vaccination - Neutropenia	1, N = 919291	0, N = 919291
Age	38 (27, 54)	38 (27, 54)
Age Groups		
16-39	481193 (52%)	481193 (52%)
40-49	165831 (18%)	165831 (18%)
50-59	97852 (11%)	97852 (11%)
60-69	93505 (10%)	93505 (10%)
70-79	57244 (6.2%)	57244 (6.2%)
80+	23666 (2.6%)	23666 (2.6%)
Sex		
F	441581 (48%)	441581 (48%)
M	477710 (52%)	477710 (52%)
Population Sector		
General Jewish	620972 (68%)	620972 (68%)
Arab	273253 (30%)	273253 (30%)
Ultra-Orthodox Jewish	25066 (2.7%)	25066 (2.7%)
CDC Risk Factor Count		
0	583292 (63%)	583292 (63%)
1	209052 (23%)	209052 (23%)
2	67190 (7.3%)	67190 (7.3%)
3	30913 (3.4%)	30913 (3.4%)
4+	28844 (3.1%)	28844 (3.1%)
Flu Vaccinations in the Last 5 Years		
0	577791 (63%)	644181 (70%)
1-2	178032 (19%)	153615 (17%)
3-4	78768 (8.6%)	65090 (7.1%)
5+	84700 (9.2%)	56405 (6.1%)
Cancer	10651 (1.2%)	10997 (1.2%)
CDC "Certain" Risk Criteria		
Chronic Kidney Disease	44710 (4.9%)	45249 (4.9%)
Chronic Obstructive Pulmonary Disease	11683 (1.3%)	13272 (1.4%)
Heart Disease	38068 (4.1%)	37882 (4.1%)
Solid Organ Transplant	397 (<0.1%)	422 (<0.1%)
Obesity (BMI 30-40)	138573 (15%)	134326 (15%)
Severe Obesity (BMI 40+)	12863 (1.4%)	13650 (1.5%)
Pregnancy	6292 (0.7%)	6292 (0.7%)
Sickle Cell Disease	146 (<0.1%)	193 (<0.1%)
Smoking	164543 (18%)	195772 (21%)
Type 2 Diabetes Mellitus	69892 (7.6%)	68907 (7.5%)
Asthma	49400 (5.4%)	49618 (5.4%)
CDC "Possible" Risk Criteria		
Cerebrovascular Disease	17490 (1.9%)	18328 (2.0%)
Other Respiratory Disease	2126 (0.2%)	2183 (0.2%)
Hypertension	106778 (12%)	105297 (11%)
Immunosuppression	16884 (1.8%)	16876 (1.8%)
Neurological Disease	29550 (3.2%)	31875 (3.5%)
Liver Disease	11329 (1.2%)	13462 (1.5%)
Overweight (BMI 25-30)	297868 (32%)	283896 (31%)
Thalassemia	6268 (0.7%)	6010 (0.7%)
Type 1 Diabetes Mellitus	3084 (0.3%)	2946 (0.3%)

Vaccination - Other Thrombosis	1, N = 932469	0, N = 932469
Age	38 (27, 53)	38 (27, 53)
Age Groups		
16-39	489694 (53%)	489694 (53%)
40-49	168196 (18%)	168196 (18%)
50-59	99023 (11%)	99023 (11%)
60-69	94483 (10%)	94483 (10%)
70-79	57592 (6.2%)	57592 (6.2%)
80+	23481 (2.5%)	23481 (2.5%)
Sex		
F	451164 (48%)	451164 (48%)
M	481305 (52%)	481305 (52%)
Population Sector		
General Jewish	630547 (68%)	630547 (68%)
Arab	276499 (30%)	276499 (30%)
Ultra-Orthodox Jewish	25423 (2.7%)	25423 (2.7%)
CDC Risk Factor Count		
0	593509 (64%)	593509 (64%)
1	212555 (23%)	212555 (23%)
2	67733 (7.3%)	67733 (7.3%)
3	30762 (3.3%)	30762 (3.3%)
4+	27910 (3.0%)	27910 (3.0%)
Flu Vaccinations in the Last 5 Years		
0	586105 (63%)	653644 (70%)
1-2	181136 (19%)	156138 (17%)
3-4	79878 (8.6%)	65866 (7.1%)
5+	85350 (9.2%)	56821 (6.1%)
Cancer	11107 (1.2%)	11495 (1.2%)
CDC "Certain" Risk Criteria		
Chronic Kidney Disease	44549 (4.8%)	45106 (4.8%)
Chronic Obstructive Pulmonary Disease	11458 (1.2%)	12967 (1.4%)
Heart Disease	37051 (4.0%)	36750 (3.9%)
Solid Organ Transplant	406 (<0.1%)	424 (<0.1%)
Obesity (BMI 30-40)	139034 (15%)	134704 (14%)
Severe Obesity (BMI 40+)	12801 (1.4%)	13601 (1.5%)
Pregnancy	6464 (0.7%)	6464 (0.7%)
Sickle Cell Disease	151 (<0.1%)	197 (<0.1%)
Smoking	165236 (18%)	196549 (21%)
Type 2 Diabetes Mellitus	69222 (7.4%)	68369 (7.3%)
Asthma	50186 (5.4%)	50533 (5.4%)
CDC "Possible" Risk Criteria		
Cerebrovascular Disease	17093 (1.8%)	17825 (1.9%)
Other Respiratory Disease	2130 (0.2%)	2220 (0.2%)
Hypertension	106368 (11%)	104740 (11%)
Immunosuppression	17274 (1.9%)	17290 (1.9%)
Neurological Disease	29767 (3.2%)	32148 (3.4%)
Liver Disease	11459 (1.2%)	13688 (1.5%)
Overweight (BMI 25-30)	300980 (32%)	286765 (31%)
Thalassemia	6388 (0.7%)	6121 (0.7%)
Type 1 Diabetes Mellitus	3086 (0.3%)	2937 (0.3%)

Vaccination - Paresthesia	1, N = 827478	0, N = 827478
Age	37 (26, 51)	37 (26, 51)
Age Groups		
16-39	463853 (56%)	463853 (56%)
40-49	144833 (18%)	144833 (18%)
50-59	79956 (9.7%)	79956 (9.7%)
60-69	74625 (9.0%)	74625 (9.0%)
70-79	45826 (5.5%)	45826 (5.5%)
80+	18385 (2.2%)	18385 (2.2%)
Sex		
F	389734 (47%)	389734 (47%)
M	437744 (53%)	437744 (53%)
Population Sector		
General Jewish	554832 (67%)	554832 (67%)
Arab	249031 (30%)	249031 (30%)
Ultra-Orthodox Jewish	23615 (2.9%)	23615 (2.9%)
CDC Risk Factor Count		
0	549329 (66%)	549329 (66%)
1	184011 (22%)	184011 (22%)
2	52681 (6.4%)	52681 (6.4%)
3	22321 (2.7%)	22321 (2.7%)
4+	19136 (2.3%)	19136 (2.3%)
Flu Vaccinations in the Last 5 Years		
0	539189 (65%)	598819 (72%)
1-2	158111 (19%)	134214 (16%)
3-4	64793 (7.8%)	51904 (6.3%)
5+	65385 (7.9%)	42541 (5.1%)
Cancer	8622 (1.0%)	8917 (1.1%)
CDC "Certain" Risk Criteria		
Chronic Kidney Disease	34808 (4.2%)	35315 (4.3%)
Chronic Obstructive Pulmonary Disease	8403 (1.0%)	9568 (1.2%)
Heart Disease	27638 (3.3%)	27621 (3.3%)
Solid Organ Transplant	288 (<0.1%)	317 (<0.1%)
Obesity (BMI 30-40)	113688 (14%)	109680 (13%)
Severe Obesity (BMI 40+)	10302 (1.2%)	10937 (1.3%)
Pregnancy	5833 (0.7%)	5833 (0.7%)
Sickle Cell Disease	135 (<0.1%)	178 (<0.1%)
Smoking	145536 (18%)	173757 (21%)
Type 2 Diabetes Mellitus	51894 (6.3%)	51255 (6.2%)
Asthma	43452 (5.3%)	43717 (5.3%)
CDC "Possible" Risk Criteria		
Cerebrovascular Disease	11261 (1.4%)	11865 (1.4%)
Other Respiratory Disease	1590 (0.2%)	1674 (0.2%)
Hypertension	80778 (9.8%)	79375 (9.6%)
Immunosuppression	12790 (1.5%)	12894 (1.6%)
Neurological Disease	22170 (2.7%)	24018 (2.9%)
Liver Disease	8962 (1.1%)	10798 (1.3%)
Overweight (BMI 25-30)	261959 (32%)	249158 (30%)
Thalassemia	5561 (0.7%)	5318 (0.6%)
Type 1 Diabetes Mellitus	2377 (0.3%)	2248 (0.3%)

Vaccination - Pulmonary Embolism	1, N = 937116	0, N = 937116
Age	38 (27, 54)	38 (27, 54)
Age Groups		
16-39	490222 (52%)	490222 (52%)
40-49	168767 (18%)	168767 (18%)
50-59	99778 (11%)	99778 (11%)
60-69	95732 (10%)	95732 (10%)
70-79	58621 (6.3%)	58621 (6.3%)
80+	23996 (2.6%)	23996 (2.6%)
Sex		
F	453214 (48%)	453214 (48%)
M	483902 (52%)	483902 (52%)
Population Sector		
General Jewish	634122 (68%)	634122 (68%)
Arab	277482 (30%)	277482 (30%)
Ultra-Orthodox Jewish	25512 (2.7%)	25512 (2.7%)
CDC Risk Factor Count		
0	594406 (63%)	594406 (63%)
1	213512 (23%)	213512 (23%)
2	68631 (7.3%)	68631 (7.3%)
3	31457 (3.4%)	31457 (3.4%)
4+	29110 (3.1%)	29110 (3.1%)
Flu Vaccinations in the Last 5 Years		
0	587265 (63%)	655062 (70%)
1-2	182132 (19%)	157259 (17%)
3-4	80806 (8.6%)	66834 (7.1%)
5+	86913 (9.3%)	57961 (6.2%)
Cancer	11331 (1.2%)	11744 (1.3%)
CDC "Certain" Risk Criteria		
Chronic Kidney Disease	45468 (4.9%)	46071 (4.9%)
Chronic Obstructive Pulmonary Disease	11813 (1.3%)	13387 (1.4%)
Heart Disease	38451 (4.1%)	38144 (4.1%)
Solid Organ Transplant	437 (<0.1%)	466 (<0.1%)
Obesity (BMI 30-40)	140381 (15%)	135933 (15%)
Severe Obesity (BMI 40+)	12952 (1.4%)	13727 (1.5%)
Pregnancy	6473 (0.7%)	6473 (0.7%)
Sickle Cell Disease	149 (<0.1%)	198 (<0.1%)
Smoking	166293 (18%)	197722 (21%)
Type 2 Diabetes Mellitus	70741 (7.5%)	69841 (7.5%)
Asthma	50520 (5.4%)	50853 (5.4%)
CDC "Possible" Risk Criteria		
Cerebrovascular Disease	17767 (1.9%)	18528 (2.0%)
Other Respiratory Disease	2172 (0.2%)	2263 (0.2%)
Hypertension	108600 (12%)	106955 (11%)
Immunosuppression	17571 (1.9%)	17614 (1.9%)
Neurological Disease	30329 (3.2%)	32736 (3.5%)
Liver Disease	11822 (1.3%)	14101 (1.5%)
Overweight (BMI 25-30)	302671 (32%)	288518 (31%)
Thalassemia	6441 (0.7%)	6155 (0.7%)
Type 1 Diabetes Mellitus	3145 (0.3%)	3006 (0.3%)

Vaccination - Pericarditis	1, N = 936197	0, N = 936197
Age	38 (27, 54)	38 (27, 54)
Age Groups		
16-39	489466 (52%)	489466 (52%)
40-49	168560 (18%)	168560 (18%)
50-59	99629 (11%)	99629 (11%)
60-69	95631 (10%)	95631 (10%)
70-79	58713 (6.3%)	58713 (6.3%)
80+	24198 (2.6%)	24198 (2.6%)
Sex		
F	453786 (48%)	453786 (48%)
M	482411 (52%)	482411 (52%)
Population Sector		
General Jewish	633758 (68%)	633758 (68%)
Arab	276944 (30%)	276944 (30%)
Ultra-Orthodox Jewish	25495 (2.7%)	25495 (2.7%)
CDC Risk Factor Count		
0	593680 (63%)	593680 (63%)
1	213266 (23%)	213266 (23%)
2	68623 (7.3%)	68623 (7.3%)
3	31508 (3.4%)	31508 (3.4%)
4+	29120 (3.1%)	29120 (3.1%)
Flu Vaccinations in the Last 5 Years		
0	586450 (63%)	654147 (70%)
1-2	181935 (19%)	157224 (17%)
3-4	80802 (8.6%)	66860 (7.1%)
5+	87010 (9.3%)	57966 (6.2%)
Cancer	11368 (1.2%)	11791 (1.3%)
CDC "Certain" Risk Criteria		
Chronic Kidney Disease	45457 (4.9%)	46084 (4.9%)
Chronic Obstructive Pulmonary Disease	11825 (1.3%)	13422 (1.4%)
Heart Disease	38136 (4.1%)	37850 (4.0%)
Solid Organ Transplant	422 (<0.1%)	456 (<0.1%)
Obesity (BMI 30-40)	140419 (15%)	135951 (15%)
Severe Obesity (BMI 40+)	12992 (1.4%)	13766 (1.5%)
Pregnancy	6481 (0.7%)	6481 (0.7%)
Sickle Cell Disease	149 (<0.1%)	196 (<0.1%)
Smoking	165874 (18%)	197310 (21%)
Type 2 Diabetes Mellitus	70757 (7.6%)	69791 (7.5%)
Asthma	50470 (5.4%)	50818 (5.4%)
CDC "Possible" Risk Criteria		
Cerebrovascular Disease	17779 (1.9%)	18536 (2.0%)
Other Respiratory Disease	2187 (0.2%)	2285 (0.2%)
Hypertension	108647 (12%)	107036 (11%)
Immunosuppression	17550 (1.9%)	17571 (1.9%)
Neurological Disease	30483 (3.3%)	32836 (3.5%)
Liver Disease	11813 (1.3%)	14115 (1.5%)
Overweight (BMI 25-30)	302235 (32%)	288108 (31%)
Thalassemia	6435 (0.7%)	6150 (0.7%)
Type 1 Diabetes Mellitus	3138 (0.3%)	3006 (0.3%)

Vaccination - Seizures	1, N = 913091	0, N = 913091
Age	38 (27, 54)	38 (27, 54)
Age Groups		
16-39	476943 (52%)	476943 (52%)
40-49	165220 (18%)	165220 (18%)
50-59	97485 (11%)	97485 (11%)
60-69	93223 (10%)	93223 (10%)
70-79	56971 (6.2%)	56971 (6.2%)
80+	23249 (2.5%)	23249 (2.5%)
Sex		
F	441879 (48%)	441879 (48%)
M	471212 (52%)	471212 (52%)
Population Sector		
General Jewish	617140 (68%)	617140 (68%)
Arab	270936 (30%)	270936 (30%)
Ultra-Orthodox Jewish	25015 (2.7%)	25015 (2.7%)
CDC Risk Factor Count		
0	586030 (64%)	586030 (64%)
1	204412 (22%)	204412 (22%)
2	65124 (7.1%)	65124 (7.1%)
3	30086 (3.3%)	30086 (3.3%)
4+	27439 (3.0%)	27439 (3.0%)
Flu Vaccinations in the Last 5 Years		
0	574358 (63%)	640233 (70%)
1-2	177039 (19%)	152738 (17%)
3-4	78044 (8.5%)	64348 (7.0%)
5+	83650 (9.2%)	55772 (6.1%)
Cancer	10927 (1.2%)	11357 (1.2%)
CDC "Certain" Risk Criteria		
Chronic Kidney Disease	43975 (4.8%)	44528 (4.9%)
Chronic Obstructive Pulmonary Disease	11279 (1.2%)	12796 (1.4%)
Heart Disease	37111 (4.1%)	36893 (4.0%)
Solid Organ Transplant	417 (<0.1%)	444 (<0.1%)
Obesity (BMI 30-40)	136051 (15%)	132096 (14%)
Severe Obesity (BMI 40+)	12485 (1.4%)	13292 (1.5%)
Pregnancy	6317 (0.7%)	6317 (0.7%)
Sickle Cell Disease	143 (<0.1%)	190 (<0.1%)
Smoking	161992 (18%)	192664 (21%)
Type 2 Diabetes Mellitus	68394 (7.5%)	67624 (7.4%)
Asthma	48315 (5.3%)	48675 (5.3%)
CDC "Possible" Risk Criteria		
Cerebrovascular Disease	16376 (1.8%)	17042 (1.9%)
Other Respiratory Disease	2096 (0.2%)	2199 (0.2%)
Hypertension	105066 (12%)	103536 (11%)
Immunosuppression	16894 (1.9%)	16976 (1.9%)
Neurological Disease	21890 (2.4%)	23484 (2.6%)
Liver Disease	11322 (1.2%)	13476 (1.5%)
Overweight (BMI 25-30)	295668 (32%)	281783 (31%)
Thalassemia	6157 (0.7%)	5933 (0.6%)
Type 1 Diabetes Mellitus	2980 (0.3%)	2846 (0.3%)

Vaccination - Syncope	1, N = 858068	0, N = 858068
Age	38 (27, 53)	38 (27, 53)
Age Groups		
16-39	453541 (53%)	453541 (53%)
40-49	157376 (18%)	157376 (18%)
50-59	91999 (11%)	91999 (11%)
60-69	86147 (10%)	86147 (10%)
70-79	50677 (5.9%)	50677 (5.9%)
80+	18328 (2.1%)	18328 (2.1%)
Sex		
F	406746 (47%)	406746 (47%)
M	451322 (53%)	451322 (53%)
Population Sector		
General Jewish	574581 (67%)	574581 (67%)
Arab	259640 (30%)	259640 (30%)
Ultra-Orthodox Jewish	23847 (2.8%)	23847 (2.8%)
CDC Risk Factor Count		
0	554394 (65%)	554394 (65%)
1	194682 (23%)	194682 (23%)
2	60289 (7.0%)	60289 (7.0%)
3	26455 (3.1%)	26455 (3.1%)
4+	22248 (2.6%)	22248 (2.6%)
Flu Vaccinations in the Last 5 Years		
0	547245 (64%)	609510 (71%)
1-2	165485 (19%)	141497 (16%)
3-4	71314 (8.3%)	58279 (6.8%)
5+	74024 (8.6%)	48782 (5.7%)
Cancer	9583 (1.1%)	9964 (1.2%)
CDC "Certain" Risk Criteria		
Chronic Kidney Disease	38327 (4.5%)	38648 (4.5%)
Chronic Obstructive Pulmonary Disease	9602 (1.1%)	10926 (1.3%)
Heart Disease	30654 (3.6%)	30342 (3.5%)
Solid Organ Transplant	363 (<0.1%)	363 (<0.1%)
Obesity (BMI 30-40)	126598 (15%)	122610 (14%)
Severe Obesity (BMI 40+)	11667 (1.4%)	12407 (1.4%)
Pregnancy	5598 (0.7%)	5598 (0.7%)
Sickle Cell Disease	140 (<0.1%)	183 (<0.1%)
Smoking	152171 (18%)	181110 (21%)
Type 2 Diabetes Mellitus	60661 (7.1%)	60028 (7.0%)
Asthma	44683 (5.2%)	45164 (5.3%)
CDC "Possible" Risk Criteria		
Cerebrovascular Disease	13430 (1.6%)	14071 (1.6%)
Other Respiratory Disease	1783 (0.2%)	1856 (0.2%)
Hypertension	91884 (11%)	90528 (11%)
Immunosuppression	15023 (1.8%)	14979 (1.7%)
Neurological Disease	24179 (2.8%)	26090 (3.0%)
Liver Disease	10044 (1.2%)	11987 (1.4%)
Overweight (BMI 25-30)	277528 (32%)	264270 (31%)
Thalassemia	5733 (0.7%)	5461 (0.6%)
Type 1 Diabetes Mellitus	2673 (0.3%)	2520 (0.3%)

Vaccination - Thrombocytopenia	1, N = 923123	0, N = 923123
Age	38 (27, 54)	38 (27, 54)
Age Groups		
16-39	483368 (52%)	483368 (52%)
40-49	166322 (18%)	166322 (18%)
50-59	98576 (11%)	98576 (11%)
60-69	94225 (10%)	94225 (10%)
70-79	57236 (6.2%)	57236 (6.2%)
80+	23396 (2.5%)	23396 (2.5%)
Sex		
F	445726 (48%)	445726 (48%)
M	477397 (52%)	477397 (52%)
Population Sector		
General Jewish	623850 (68%)	623850 (68%)
Arab	274374 (30%)	274374 (30%)
Ultra-Orthodox Jewish	24899 (2.7%)	24899 (2.7%)
CDC Risk Factor Count		
0	586776 (64%)	586776 (64%)
1	210136 (23%)	210136 (23%)
2	67292 (7.3%)	67292 (7.3%)
3	30730 (3.3%)	30730 (3.3%)
4+	28189 (3.1%)	28189 (3.1%)
Flu Vaccinations in the Last 5 Years		
0	580394 (63%)	647222 (70%)
1-2	178763 (19%)	154169 (17%)
3-4	79216 (8.6%)	65358 (7.1%)
5+	84750 (9.2%)	56374 (6.1%)
Cancer	10945 (1.2%)	11303 (1.2%)
CDC "Certain" Risk Criteria		
Chronic Kidney Disease	44257 (4.8%)	44830 (4.9%)
Chronic Obstructive Pulmonary Disease	11496 (1.2%)	13078 (1.4%)
Heart Disease	37328 (4.0%)	37076 (4.0%)
Solid Organ Transplant	385 (<0.1%)	416 (<0.1%)
Obesity (BMI 30-40)	138390 (15%)	134082 (15%)
Severe Obesity (BMI 40+)	12840 (1.4%)	13607 (1.5%)
Pregnancy	6275 (0.7%)	6275 (0.7%)
Sickle Cell Disease	152 (<0.1%)	192 (<0.1%)
Smoking	164244 (18%)	195370 (21%)
Type 2 Diabetes Mellitus	69266 (7.5%)	68354 (7.4%)
Asthma	49613 (5.4%)	50056 (5.4%)
CDC "Possible" Risk Criteria		
Cerebrovascular Disease	17313 (1.9%)	18036 (2.0%)
Other Respiratory Disease	2121 (0.2%)	2183 (0.2%)
Hypertension	106305 (12%)	104675 (11%)
Immunosuppression	16950 (1.8%)	16971 (1.8%)
Neurological Disease	29626 (3.2%)	31978 (3.5%)
Liver Disease	11128 (1.2%)	13270 (1.4%)
Overweight (BMI 25-30)	298216 (32%)	284113 (31%)
Thalassemia	6217 (0.7%)	5951 (0.6%)
Type 1 Diabetes Mellitus	3083 (0.3%)	2918 (0.3%)

Vaccination - Uveitis	1, N = 933217	0, N = 933217
Age	38 (27, 54)	38 (27, 54)
Age Groups		
16-39	488615 (52%)	488615 (52%)
40-49	168043 (18%)	168043 (18%)
50-59	99219 (11%)	99219 (11%)
60-69	95051 (10%)	95051 (10%)
70-79	58296 (6.2%)	58296 (6.2%)
80+	23993 (2.6%)	23993 (2.6%)
Sex		
F	451728 (48%)	451728 (48%)
M	481489 (52%)	481489 (52%)
Population Sector		
General Jewish	631522 (68%)	631522 (68%)
Arab	276283 (30%)	276283 (30%)
Ultra-Orthodox Jewish	25412 (2.7%)	25412 (2.7%)
CDC Risk Factor Count		
0	592032 (63%)	592032 (63%)
1	212436 (23%)	212436 (23%)
2	68210 (7.3%)	68210 (7.3%)
3	31329 (3.4%)	31329 (3.4%)
4+	29210 (3.1%)	29210 (3.1%)
Flu Vaccinations in the Last 5 Years		
0	584904 (63%)	652314 (70%)
1-2	181332 (19%)	156669 (17%)
3-4	80494 (8.6%)	66557 (7.1%)
5+	86487 (9.3%)	57677 (6.2%)
Cancer	11369 (1.2%)	11766 (1.3%)
CDC "Certain" Risk Criteria		
Chronic Kidney Disease	45466 (4.9%)	45944 (4.9%)
Chronic Obstructive Pulmonary Disease	11792 (1.3%)	13409 (1.4%)
Heart Disease	38539 (4.1%)	38282 (4.1%)
Solid Organ Transplant	447 (<0.1%)	463 (<0.1%)
Obesity (BMI 30-40)	139875 (15%)	135450 (15%)
Severe Obesity (BMI 40+)	12956 (1.4%)	13745 (1.5%)
Pregnancy	6457 (0.7%)	6457 (0.7%)
Sickle Cell Disease	149 (<0.1%)	198 (<0.1%)
Smoking	165459 (18%)	196747 (21%)
Type 2 Diabetes Mellitus	70360 (7.5%)	69459 (7.4%)
Asthma	50368 (5.4%)	50700 (5.4%)
CDC "Possible" Risk Criteria		
Cerebrovascular Disease	17765 (1.9%)	18538 (2.0%)
Other Respiratory Disease	2175 (0.2%)	2264 (0.2%)
Hypertension	108220 (12%)	106547 (11%)
Immunosuppression	17343 (1.9%)	17382 (1.9%)
Neurological Disease	30310 (3.2%)	32648 (3.5%)
Liver Disease	11788 (1.3%)	14075 (1.5%)
Overweight (BMI 25-30)	301268 (32%)	287201 (31%)
Thalassemia	6396 (0.7%)	6128 (0.7%)
Type 1 Diabetes Mellitus	3119 (0.3%)	2984 (0.3%)

Vaccination - Vertigo	1, N = 773263	0, N = 773263
Age	36 (26, 49)	36 (26, 49)
Age Groups		
16-39	447099 (58%)	447099 (58%)
40-49	139747 (18%)	139747 (18%)
50-59	75081 (9.7%)	75081 (9.7%)
60-69	64602 (8.4%)	64602 (8.4%)
70-79	35385 (4.6%)	35385 (4.6%)
80+	11349 (1.5%)	11349 (1.5%)
Sex		
F	348565 (45%)	348565 (45%)
M	424698 (55%)	424698 (55%)
Population Sector		
General Jewish	516989 (67%)	516989 (67%)
Arab	233865 (30%)	233865 (30%)
Ultra-Orthodox Jewish	22409 (2.9%)	22409 (2.9%)
CDC Risk Factor Count		
0	525850 (68%)	525850 (68%)
1	170890 (22%)	170890 (22%)
2	45210 (5.8%)	45210 (5.8%)
3	17697 (2.3%)	17697 (2.3%)
4+	13616 (1.8%)	13616 (1.8%)
Flu Vaccinations in the Last 5 Years		
0	516687 (67%)	573358 (74%)
1-2	147264 (19%)	122450 (16%)
3-4	56931 (7.4%)	44261 (5.7%)
5+	52381 (6.8%)	33194 (4.3%)
Cancer	7169 (0.9%)	7358 (1.0%)
CDC "Certain" Risk Criteria		
Chronic Kidney Disease	29415 (3.8%)	29842 (3.9%)
Chronic Obstructive Pulmonary Disease	6724 (0.9%)	7692 (1.0%)
Heart Disease	21707 (2.8%)	21519 (2.8%)
Solid Organ Transplant	254 (<0.1%)	276 (<0.1%)
Obesity (BMI 30-40)	101722 (13%)	98495 (13%)
Severe Obesity (BMI 40+)	9199 (1.2%)	9621 (1.2%)
Pregnancy	5389 (0.7%)	5389 (0.7%)
Sickle Cell Disease	119 (<0.1%)	170 (<0.1%)
Smoking	140265 (18%)	167684 (22%)
Type 2 Diabetes Mellitus	42663 (5.5%)	42062 (5.4%)
Asthma	40011 (5.2%)	40198 (5.2%)
CDC "Possible" Risk Criteria		
Cerebrovascular Disease	8332 (1.1%)	8836 (1.1%)
Other Respiratory Disease	1263 (0.2%)	1332 (0.2%)
Hypertension	63902 (8.3%)	62734 (8.1%)
Immunosuppression	11027 (1.4%)	10966 (1.4%)
Neurological Disease	18202 (2.4%)	19873 (2.6%)
Liver Disease	7875 (1.0%)	9548 (1.2%)
Overweight (BMI 25-30)	243150 (31%)	230441 (30%)
Thalassemia	5019 (0.6%)	4891 (0.6%)
Type 1 Diabetes Mellitus	2227 (0.3%)	2058 (0.3%)

Vaccination - Herpes Zoster	1, N = 888647	0, N = 888647
Age	38 (27, 52)	38 (27, 52)
Age Groups		
16-39	477001 (54%)	477001 (54%)
40-49	162170 (18%)	162170 (18%)
50-59	94176 (11%)	94176 (11%)
60-69	85875 (9.7%)	85875 (9.7%)
70-79	50070 (5.6%)	50070 (5.6%)
80+	19355 (2.2%)	19355 (2.2%)
Sex		
F	426598 (48%)	426598 (48%)
M	462049 (52%)	462049 (52%)
Population Sector		
General Jewish	594530 (67%)	594530 (67%)
Arab	269802 (30%)	269802 (30%)
Ultra-Orthodox Jewish	24315 (2.7%)	24315 (2.7%)
CDC Risk Factor Count		
0	573238 (65%)	573238 (65%)
1	201844 (23%)	201844 (23%)
2	61642 (6.9%)	61642 (6.9%)
3	27310 (3.1%)	27310 (3.1%)
4+	24613 (2.8%)	24613 (2.8%)
Flu Vaccinations in the Last 5 Years		
0	568074 (64%)	632456 (71%)
1-2	171770 (19%)	147001 (17%)
3-4	73506 (8.3%)	59755 (6.7%)
5+	75297 (8.5%)	49435 (5.6%)
Cancer	9969 (1.1%)	10321 (1.2%)
CDC "Certain" Risk Criteria		
Chronic Kidney Disease	40759 (4.6%)	41375 (4.7%)
Chronic Obstructive Pulmonary Disease	10226 (1.2%)	11638 (1.3%)
Heart Disease	33316 (3.7%)	32970 (3.7%)
Solid Organ Transplant	354 (<0.1%)	366 (<0.1%)
Obesity (BMI 30-40)	130412 (15%)	126405 (14%)
Severe Obesity (BMI 40+)	12157 (1.4%)	12894 (1.5%)
Pregnancy	6226 (0.7%)	6226 (0.7%)
Sickle Cell Disease	147 (<0.1%)	190 (<0.1%)
Smoking	158931 (18%)	189146 (21%)
Type 2 Diabetes Mellitus	62134 (7.0%)	61453 (6.9%)
Asthma	47264 (5.3%)	47463 (5.3%)
CDC "Possible" Risk Criteria		
Cerebrovascular Disease	15274 (1.7%)	16039 (1.8%)
Other Respiratory Disease	1842 (0.2%)	1889 (0.2%)
Hypertension	94622 (11%)	93087 (10%)
Immunosuppression	15463 (1.7%)	15499 (1.7%)
Neurological Disease	27146 (3.1%)	29295 (3.3%)
Liver Disease	10847 (1.2%)	12835 (1.4%)
Overweight (BMI 25-30)	284989 (32%)	271415 (31%)
Thalassemia	6158 (0.7%)	5925 (0.7%)
Type 1 Diabetes Mellitus	2883 (0.3%)	2723 (0.3%)

Table S5 – Outcome specific population tables for the SARS-CoV-2 exposure analyses

Characteristics of the different study populations for each study outcome following application of all eligibility criteria, the matching process and exclusion of patients with the outcome diagnosed before start of follow-up. CDC: Centers for Disease Control and Prevention; BMI: Body mass index.

SARS-CoV-2 - Acute Kidney Injury	1, N = 179018	0, N = 179018
Age	34 (24, 47)	34 (24, 47)
Age Groups		
16-39	111116 (62%)	111116 (62%)
40-49	30233 (17%)	30233 (17%)
50-59	18845 (11%)	18845 (11%)
60-69	12341 (6.9%)	12341 (6.9%)
70-79	4939 (2.8%)	4939 (2.8%)
80+	1544 (0.9%)	1544 (0.9%)
Sex		
F	98114 (55%)	98114 (55%)
M	80904 (45%)	80904 (45%)
Population Sector		
General Jewish	93914 (52%)	93914 (52%)
Arab	63570 (36%)	63570 (36%)
Ultra-Orthodox Jewish	21534 (12%)	21534 (12%)
CDC Risk Factor Count		
0	113293 (63%)	113293 (63%)
1	43697 (24%)	43697 (24%)
2	12677 (7.1%)	12677 (7.1%)
3	5177 (2.9%)	5177 (2.9%)
4+	4174 (2.3%)	4174 (2.3%)
Flu Vaccinations in the Last 5 Years		
0	126597 (71%)	127468 (71%)
1-2	30961 (17%)	30710 (17%)
3-4	12222 (6.8%)	11907 (6.7%)
5+	9238 (5.2%)	8933 (5.0%)
Cancer	1956 (1.1%)	2256 (1.3%)
CDC "Certain" Risk Criteria		
Chronic Kidney Disease	6608 (3.7%)	6618 (3.7%)
Chronic Obstructive Pulmonary Disease	1551 (0.9%)	2039 (1.1%)
Heart Disease	4813 (2.7%)	5169 (2.9%)
Solid Organ Transplant	29 (<0.1%)	27 (<0.1%)
Obesity (BMI 30-40)	31521 (18%)	29430 (16%)
Severe Obesity (BMI 40+)	3570 (2.0%)	3184 (1.8%)
Pregnancy	5251 (2.9%)	5251 (2.9%)
Sickle Cell Disease	51 (<0.1%)	58 (<0.1%)
Smoking	19432 (11%)	31337 (18%)
Type 2 Diabetes Mellitus	11799 (6.6%)	11760 (6.6%)
Asthma	10465 (5.8%)	10707 (6.0%)
CDC "Possible" Risk Criteria		
Cerebrovascular Disease	2437 (1.4%)	2520 (1.4%)
Other Respiratory Disease	303 (0.2%)	362 (0.2%)
Hypertension	14511 (8.1%)	14652 (8.2%)
Immunosuppression	4321 (2.4%)	4456 (2.5%)
Neurological Disease	5308 (3.0%)	5568 (3.1%)
Liver Disease	2333 (1.3%)	2570 (1.4%)
Overweight (BMI 25-30)	55088 (31%)	51648 (29%)
Thalassemia	1710 (1.0%)	1709 (1.0%)
Type 1 Diabetes Mellitus	628 (0.4%)	707 (0.4%)

SARS-CoV-2 - Anemia	1, N = 131963	0, N = 131963
Age	34 (24, 46)	34 (24, 46)
Age Groups		
16-39	82736 (63%)	82736 (63%)
40-49	22117 (17%)	22117 (17%)
50-59	13226 (10%)	13226 (10%)
60-69	9195 (7.0%)	9195 (7.0%)
70-79	3714 (2.8%)	3714 (2.8%)
80+	975 (0.7%)	975 (0.7%)
Sex		
F	60843 (46%)	60843 (46%)
M	71120 (54%)	71120 (54%)
Population Sector		
General Jewish	69989 (53%)	69989 (53%)
Arab	45951 (35%)	45951 (35%)
Ultra-Orthodox Jewish	16023 (12%)	16023 (12%)
CDC Risk Factor Count		
0	86658 (66%)	86658 (66%)
1	30789 (23%)	30789 (23%)
2	8355 (6.3%)	8355 (6.3%)
3	3376 (2.6%)	3376 (2.6%)
4+	2785 (2.1%)	2785 (2.1%)
Flu Vaccinations in the Last 5 Years		
0	95844 (73%)	96705 (73%)
1-2	21604 (16%)	21253 (16%)
3-4	8313 (6.3%)	8039 (6.1%)
5+	6202 (4.7%)	5966 (4.5%)
Cancer	1143 (0.9%)	1290 (1.0%)
CDC "Certain" Risk Criteria		
Chronic Kidney Disease	5136 (3.9%)	5137 (3.9%)
Chronic Obstructive Pulmonary Disease	1089 (0.8%)	1437 (1.1%)
Heart Disease	3426 (2.6%)	3744 (2.8%)
Solid Organ Transplant	35 (<0.1%)	38 (<0.1%)
Obesity (BMI 30-40)	21994 (17%)	20409 (15%)
Severe Obesity (BMI 40+)	2235 (1.7%)	2040 (1.5%)
Pregnancy	2982 (2.3%)	2982 (2.3%)
Sickle Cell Disease	15 (<0.1%)	14 (<0.1%)
Smoking	16346 (12%)	26361 (20%)
Type 2 Diabetes Mellitus	8085 (6.1%)	8088 (6.1%)
Asthma	7018 (5.3%)	7231 (5.5%)
CDC "Possible" Risk Criteria		
Cerebrovascular Disease	1606 (1.2%)	1668 (1.3%)
Other Respiratory Disease	170 (0.1%)	198 (0.2%)
Hypertension	10204 (7.7%)	10422 (7.9%)
Immunosuppression	2641 (2.0%)	2707 (2.1%)
Neurological Disease	3488 (2.6%)	3574 (2.7%)
Liver Disease	1507 (1.1%)	1655 (1.3%)
Overweight (BMI 25-30)	42141 (32%)	39356 (30%)
Thalassemia	377 (0.3%)	384 (0.3%)
Type 1 Diabetes Mellitus	409 (0.3%)	491 (0.4%)

SARS-CoV-2 - Appendicitis	1, N = 176252	0, N = 176252
Age	35 (25, 48)	35 (25, 48)
Age Groups		
16-39	106748 (61%)	106748 (61%)
40-49	29205 (17%)	29205 (17%)
50-59	18691 (11%)	18691 (11%)
60-69	13083 (7.4%)	13083 (7.4%)
70-79	6133 (3.5%)	6133 (3.5%)
80+	2392 (1.4%)	2392 (1.4%)
Sex		
F	95992 (54%)	95992 (54%)
M	80260 (46%)	80260 (46%)
Population Sector		
General Jewish	92942 (53%)	92942 (53%)
Arab	62219 (35%)	62219 (35%)
Ultra-Orthodox Jewish	21091 (12%)	21091 (12%)
CDC Risk Factor Count		
0	109158 (62%)	109158 (62%)
1	42194 (24%)	42194 (24%)
2	12619 (7.2%)	12619 (7.2%)
3	5732 (3.3%)	5732 (3.3%)
4+	6549 (3.7%)	6549 (3.7%)
Flu Vaccinations in the Last 5 Years		
0	122056 (69%)	122855 (70%)
1-2	30458 (17%)	30229 (17%)
3-4	12896 (7.3%)	12663 (7.2%)
5+	10842 (6.2%)	10505 (6.0%)
Cancer	2236 (1.3%)	2532 (1.4%)
CDC "Certain" Risk Criteria		
Chronic Kidney Disease	9002 (5.1%)	8825 (5.0%)
Chronic Obstructive Pulmonary Disease	2055 (1.2%)	2488 (1.4%)
Heart Disease	6688 (3.8%)	6958 (3.9%)
Solid Organ Transplant	177 (0.1%)	159 (<0.1%)
Obesity (BMI 30-40)	31890 (18%)	29748 (17%)
Severe Obesity (BMI 40+)	3677 (2.1%)	3256 (1.8%)
Pregnancy	5021 (2.8%)	5021 (2.8%)
Sickle Cell Disease	53 (<0.1%)	61 (<0.1%)
Smoking	19015 (11%)	30542 (17%)
Type 2 Diabetes Mellitus	13792 (7.8%)	13703 (7.8%)
Asthma	10346 (5.9%)	10745 (6.1%)
CDC "Possible" Risk Criteria		
Cerebrovascular Disease	3223 (1.8%)	3337 (1.9%)
Other Respiratory Disease	364 (0.2%)	411 (0.2%)
Hypertension	17328 (9.8%)	17470 (9.9%)
Immunosuppression	4736 (2.7%)	4823 (2.7%)
Neurological Disease	5710 (3.2%)	5990 (3.4%)
Liver Disease	2575 (1.5%)	2763 (1.6%)
Overweight (BMI 25-30)	54518 (31%)	51111 (29%)
Thalassemia	1668 (0.9%)	1660 (0.9%)
Type 1 Diabetes Mellitus	748 (0.4%)	819 (0.5%)

SARS-CoV-2 - Arrhythmia	1, N = 169220	0, N = 169220
Age	34 (24, 46)	34 (24, 46)
Age Groups		
16-39	107307 (63%)	107307 (63%)
40-49	28603 (17%)	28603 (17%)
50-59	17322 (10%)	17322 (10%)
60-69	10928 (6.5%)	10928 (6.5%)
70-79	3998 (2.4%)	3998 (2.4%)
80+	1062 (0.6%)	1062 (0.6%)
Sex		
F	91821 (54%)	91821 (54%)
M	77399 (46%)	77399 (46%)
Population Sector		
General Jewish	88312 (52%)	88312 (52%)
Arab	60363 (36%)	60363 (36%)
Ultra-Orthodox Jewish	20545 (12%)	20545 (12%)
CDC Risk Factor Count		
0	109108 (64%)	109108 (64%)
1	41127 (24%)	41127 (24%)
2	11106 (6.6%)	11106 (6.6%)
3	4293 (2.5%)	4293 (2.5%)
4+	3586 (2.1%)	3586 (2.1%)
Flu Vaccinations in the Last 5 Years		
0	121603 (72%)	122325 (72%)
1-2	28932 (17%)	28695 (17%)
3-4	10753 (6.4%)	10621 (6.3%)
5+	7932 (4.7%)	7579 (4.5%)
Cancer	1703 (1.0%)	1955 (1.2%)
CDC "Certain" Risk Criteria		
Chronic Kidney Disease	7020 (4.1%)	6958 (4.1%)
Chronic Obstructive Pulmonary Disease	1257 (0.7%)	1660 (1.0%)
Heart Disease	3567 (2.1%)	3724 (2.2%)
Solid Organ Transplant	128 (<0.1%)	106 (<0.1%)
Obesity (BMI 30-40)	28883 (17%)	26918 (16%)
Severe Obesity (BMI 40+)	3231 (1.9%)	2901 (1.7%)
Pregnancy	4982 (2.9%)	4982 (2.9%)
Sickle Cell Disease	46 (<0.1%)	54 (<0.1%)
Smoking	18546 (11%)	29775 (18%)
Type 2 Diabetes Mellitus	10432 (6.2%)	10459 (6.2%)
Asthma	9644 (5.7%)	9930 (5.9%)
CDC "Possible" Risk Criteria		
Cerebrovascular Disease	1964 (1.2%)	2067 (1.2%)
Other Respiratory Disease	247 (0.1%)	283 (0.2%)
Hypertension	12238 (7.2%)	12334 (7.3%)
Immunosuppression	3889 (2.3%)	4070 (2.4%)
Neurological Disease	4588 (2.7%)	4916 (2.9%)
Liver Disease	2091 (1.2%)	2303 (1.4%)
Overweight (BMI 25-30)	51887 (31%)	48644 (29%)
Thalassemia	1562 (0.9%)	1564 (0.9%)
Type 1 Diabetes Mellitus	626 (0.4%)	687 (0.4%)

SARS-CoV-2 - Arthritis or Arthropathy	1, N = 146035	0, N = 146035
Age	31 (23, 42)	31 (23, 42)
Age Groups		
16-39	102447 (70%)	102447 (70%)
40-49	22741 (16%)	22741 (16%)
50-59	11408 (7.8%)	11408 (7.8%)
60-69	6345 (4.3%)	6345 (4.3%)
70-79	2386 (1.6%)	2386 (1.6%)
80+	708 (0.5%)	708 (0.5%)
Sex		
F	78762 (54%)	78762 (54%)
M	67273 (46%)	67273 (46%)
Population Sector		
General Jewish	75581 (52%)	75581 (52%)
Arab	50907 (35%)	50907 (35%)
Ultra-Orthodox Jewish	19547 (13%)	19547 (13%)
CDC Risk Factor Count		
0	100540 (69%)	100540 (69%)
1	34013 (23%)	34013 (23%)
2	7277 (5.0%)	7277 (5.0%)
3	2254 (1.5%)	2254 (1.5%)
4+	1951 (1.3%)	1951 (1.3%)
Flu Vaccinations in the Last 5 Years		
0	109168 (75%)	109764 (75%)
1-2	24278 (17%)	24047 (16%)
3-4	7557 (5.2%)	7484 (5.1%)
5+	5032 (3.4%)	4740 (3.2%)
Cancer	1179 (0.8%)	1329 (0.9%)
CDC "Certain" Risk Criteria		
Chronic Kidney Disease	4790 (3.3%)	4688 (3.2%)
Chronic Obstructive Pulmonary Disease	795 (0.5%)	971 (0.7%)
Heart Disease	2618 (1.8%)	2797 (1.9%)
Solid Organ Transplant	83 (<0.1%)	86 (<0.1%)
Obesity (BMI 30-40)	21551 (15%)	20257 (14%)
Severe Obesity (BMI 40+)	2210 (1.5%)	2009 (1.4%)
Pregnancy	4820 (3.3%)	4820 (3.3%)
Sickle Cell Disease	43 (<0.1%)	36 (<0.1%)
Smoking	15634 (11%)	24417 (17%)
Type 2 Diabetes Mellitus	6165 (4.2%)	6107 (4.2%)
Asthma	8033 (5.5%)	8329 (5.7%)
CDC "Possible" Risk Criteria		
Cerebrovascular Disease	1234 (0.8%)	1220 (0.8%)
Other Respiratory Disease	162 (0.1%)	168 (0.1%)
Hypertension	7424 (5.1%)	7558 (5.2%)
Immunosuppression	2071 (1.4%)	2220 (1.5%)
Neurological Disease	3162 (2.2%)	3340 (2.3%)
Liver Disease	1360 (0.9%)	1518 (1.0%)
Overweight (BMI 25-30)	43290 (30%)	40497 (28%)
Thalassemia	1264 (0.9%)	1318 (0.9%)
Type 1 Diabetes Mellitus	463 (0.3%)	521 (0.4%)

SARS-CoV-2 - Bell's Palsy	1, N = 180674	0, N = 180674
Age	34 (24, 47)	34 (25, 47)
Age Groups		
16-39	110176 (61%)	110176 (61%)
40-49	30023 (17%)	30023 (17%)
50-59	18922 (10%)	18922 (10%)
60-69	13121 (7.3%)	13121 (7.3%)
70-79	6066 (3.4%)	6066 (3.4%)
80+	2366 (1.3%)	2366 (1.3%)
Sex		
F	98227 (54%)	98227 (54%)
M	82447 (46%)	82447 (46%)
Population Sector		
General Jewish	95349 (53%)	95349 (53%)
Arab	63768 (35%)	63768 (35%)
Ultra-Orthodox Jewish	21557 (12%)	21557 (12%)
CDC Risk Factor Count		
0	112397 (62%)	112397 (62%)
1	43269 (24%)	43269 (24%)
2	12855 (7.1%)	12855 (7.1%)
3	5728 (3.2%)	5728 (3.2%)
4+	6425 (3.6%)	6425 (3.6%)
Flu Vaccinations in the Last 5 Years		
0	125531 (69%)	126402 (70%)
1-2	31238 (17%)	30972 (17%)
3-4	13035 (7.2%)	12778 (7.1%)
5+	10870 (6.0%)	10522 (5.8%)
Cancer	2268 (1.3%)	2598 (1.4%)
CDC "Certain" Risk Criteria		
Chronic Kidney Disease	9209 (5.1%)	9043 (5.0%)
Chronic Obstructive Pulmonary Disease	2066 (1.1%)	2522 (1.4%)
Heart Disease	6650 (3.7%)	6891 (3.8%)
Solid Organ Transplant	177 (<0.1%)	160 (<0.1%)
Obesity (BMI 30-40)	32399 (18%)	30272 (17%)
Severe Obesity (BMI 40+)	3723 (2.1%)	3306 (1.8%)
Pregnancy	5182 (2.9%)	5182 (2.9%)
Sickle Cell Disease	51 (<0.1%)	56 (<0.1%)
Smoking	19602 (11%)	31564 (17%)
Type 2 Diabetes Mellitus	13654 (7.6%)	13603 (7.5%)
Asthma	10681 (5.9%)	10997 (6.1%)
CDC "Possible" Risk Criteria		
Cerebrovascular Disease	3081 (1.7%)	3136 (1.7%)
Other Respiratory Disease	370 (0.2%)	411 (0.2%)
Hypertension	17267 (9.6%)	17477 (9.7%)
Immunosuppression	4766 (2.6%)	4886 (2.7%)
Neurological Disease	5670 (3.1%)	5941 (3.3%)
Liver Disease	2643 (1.5%)	2850 (1.6%)
Overweight (BMI 25-30)	55784 (31%)	52343 (29%)
Thalassemia	1723 (1.0%)	1714 (0.9%)
Type 1 Diabetes Mellitus	759 (0.4%)	828 (0.5%)

SARS-CoV-2 - Cerebrovascular Accident	1, N = 180086	0, N = 180086
Age	34 (24, 47)	34 (24, 47)
Age Groups		
16-39	111345 (62%)	111345 (62%)
40-49	30351 (17%)	30351 (17%)
50-59	18880 (10%)	18880 (10%)
60-69	12493 (6.9%)	12493 (6.9%)
70-79	5244 (2.9%)	5244 (2.9%)
80+	1773 (1.0%)	1773 (1.0%)
Sex		
F	98204 (55%)	98204 (55%)
M	81882 (45%)	81882 (45%)
Population Sector		
General Jewish	94483 (52%)	94483 (52%)
Arab	64019 (36%)	64019 (36%)
Ultra-Orthodox Jewish	21584 (12%)	21584 (12%)
CDC Risk Factor Count		
0	113467 (63%)	113467 (63%)
1	43917 (24%)	43917 (24%)
2	12717 (7.1%)	12717 (7.1%)
3	5355 (3.0%)	5355 (3.0%)
4+	4630 (2.6%)	4630 (2.6%)
Flu Vaccinations in the Last 5 Years		
0	126813 (70%)	127636 (71%)
1-2	31101 (17%)	30838 (17%)
3-4	12374 (6.9%)	12056 (6.7%)
5+	9798 (5.4%)	9556 (5.3%)
Cancer	2116 (1.2%)	2420 (1.3%)
CDC "Certain" Risk Criteria		
Chronic Kidney Disease	8415 (4.7%)	8233 (4.6%)
Chronic Obstructive Pulmonary Disease	1697 (0.9%)	2167 (1.2%)
Heart Disease	5424 (3.0%)	5750 (3.2%)
Solid Organ Transplant	165 (<0.1%)	148 (<0.1%)
Obesity (BMI 30-40)	31870 (18%)	29894 (17%)
Severe Obesity (BMI 40+)	3653 (2.0%)	3276 (1.8%)
Pregnancy	5264 (2.9%)	5264 (2.9%)
Sickle Cell Disease	52 (<0.1%)	58 (<0.1%)
Smoking	19519 (11%)	31415 (17%)
Type 2 Diabetes Mellitus	12423 (6.9%)	12343 (6.9%)
Asthma	10492 (5.8%)	10923 (6.1%)
CDC "Possible" Risk Criteria		
Cerebrovascular Disease	686 (0.4%)	617 (0.3%)
Other Respiratory Disease	318 (0.2%)	365 (0.2%)
Hypertension	15316 (8.5%)	15555 (8.6%)
Immunosuppression	4597 (2.6%)	4782 (2.7%)
Neurological Disease	5080 (2.8%)	5315 (3.0%)
Liver Disease	2487 (1.4%)	2691 (1.5%)
Overweight (BMI 25-30)	55514 (31%)	52003 (29%)
Thalassemia	1720 (1.0%)	1705 (0.9%)
Type 1 Diabetes Mellitus	680 (0.4%)	742 (0.4%)

SARS-CoV-2 - Deep Vein Thrombosis	1, N = 180995	0, N = 180995
Age	34 (24, 47)	34 (24, 47)
Age Groups		
16-39	110885 (61%)	110885 (61%)
40-49	30049 (17%)	30049 (17%)
50-59	18897 (10%)	18897 (10%)
60-69	13002 (7.2%)	13002 (7.2%)
70-79	5884 (3.3%)	5884 (3.3%)
80+	2278 (1.3%)	2278 (1.3%)
Sex		
F	98009 (54%)	98009 (54%)
M	82986 (46%)	82986 (46%)
Population Sector		
General Jewish	95294 (53%)	95294 (53%)
Arab	64217 (35%)	64217 (35%)
Ultra-Orthodox Jewish	21484 (12%)	21484 (12%)
CDC Risk Factor Count		
0	112803 (62%)	112803 (62%)
1	43431 (24%)	43431 (24%)
2	12833 (7.1%)	12833 (7.1%)
3	5649 (3.1%)	5649 (3.1%)
4+	6279 (3.5%)	6279 (3.5%)
Flu Vaccinations in the Last 5 Years		
0	126150 (70%)	126952 (70%)
1-2	31251 (17%)	31009 (17%)
3-4	12918 (7.1%)	12694 (7.0%)
5+	10676 (5.9%)	10340 (5.7%)
Cancer	2235 (1.2%)	2517 (1.4%)
CDC "Certain" Risk Criteria		
Chronic Kidney Disease	9076 (5.0%)	8916 (4.9%)
Chronic Obstructive Pulmonary Disease	2013 (1.1%)	2456 (1.4%)
Heart Disease	6489 (3.6%)	6722 (3.7%)
Solid Organ Transplant	168 (<0.1%)	153 (<0.1%)
Obesity (BMI 30-40)	32278 (18%)	30157 (17%)
Severe Obesity (BMI 40+)	3641 (2.0%)	3246 (1.8%)
Pregnancy	5201 (2.9%)	5201 (2.9%)
Sickle Cell Disease	53 (<0.1%)	58 (<0.1%)
Smoking	19693 (11%)	31695 (18%)
Type 2 Diabetes Mellitus	13635 (7.5%)	13576 (7.5%)
Asthma	10696 (5.9%)	11047 (6.1%)
CDC "Possible" Risk Criteria		
Cerebrovascular Disease	3082 (1.7%)	3182 (1.8%)
Other Respiratory Disease	358 (0.2%)	401 (0.2%)
Hypertension	17046 (9.4%)	17212 (9.5%)
Immunosuppression	4733 (2.6%)	4825 (2.7%)
Neurological Disease	5712 (3.2%)	6001 (3.3%)
Liver Disease	2579 (1.4%)	2832 (1.6%)
Overweight (BMI 25-30)	55905 (31%)	52442 (29%)
Thalassemia	1720 (1.0%)	1708 (0.9%)
Type 1 Diabetes Mellitus	752 (0.4%)	833 (0.5%)

SARS-CoV-2 - Herpes Simplex	1, N = 170593	0, N = 170593
Age	35 (25, 48)	35 (25, 48)
Age Groups		
16-39	103351 (61%)	103351 (61%)
40-49	28380 (17%)	28380 (17%)
50-59	18111 (11%)	18111 (11%)
60-69	12604 (7.4%)	12604 (7.4%)
70-79	5838 (3.4%)	5838 (3.4%)
80+	2309 (1.4%)	2309 (1.4%)
Sex		
F	90766 (53%)	90766 (53%)
M	79827 (47%)	79827 (47%)
Population Sector		
General Jewish	89308 (52%)	89308 (52%)
Arab	61155 (36%)	61155 (36%)
Ultra-Orthodox Jewish	20130 (12%)	20130 (12%)
CDC Risk Factor Count		
0	105768 (62%)	105768 (62%)
1	40762 (24%)	40762 (24%)
2	12186 (7.1%)	12186 (7.1%)
3	5502 (3.2%)	5502 (3.2%)
4+	6375 (3.7%)	6375 (3.7%)
Flu Vaccinations in the Last 5 Years		
0	118688 (70%)	119651 (70%)
1-2	29268 (17%)	28882 (17%)
3-4	12324 (7.2%)	12118 (7.1%)
5+	10313 (6.0%)	9942 (5.8%)
Cancer	2160 (1.3%)	2427 (1.4%)
CDC "Certain" Risk Criteria		
Chronic Kidney Disease	8803 (5.2%)	8651 (5.1%)
Chronic Obstructive Pulmonary Disease	2015 (1.2%)	2406 (1.4%)
Heart Disease	6547 (3.8%)	6719 (3.9%)
Solid Organ Transplant	175 (0.1%)	149 (<0.1%)
Obesity (BMI 30-40)	30750 (18%)	28783 (17%)
Severe Obesity (BMI 40+)	3538 (2.1%)	3191 (1.9%)
Pregnancy	4608 (2.7%)	4608 (2.7%)
Sickle Cell Disease	53 (<0.1%)	54 (<0.1%)
Smoking	18774 (11%)	30226 (18%)
Type 2 Diabetes Mellitus	13422 (7.9%)	13325 (7.8%)
Asthma	9927 (5.8%)	10264 (6.0%)
CDC "Possible" Risk Criteria		
Cerebrovascular Disease	3092 (1.8%)	3223 (1.9%)
Other Respiratory Disease	358 (0.2%)	369 (0.2%)
Hypertension	16765 (9.8%)	16864 (9.9%)
Immunosuppression	4477 (2.6%)	4606 (2.7%)
Neurological Disease	5493 (3.2%)	5814 (3.4%)
Liver Disease	2511 (1.5%)	2733 (1.6%)
Overweight (BMI 25-30)	52955 (31%)	49527 (29%)
Thalassemia	1626 (1.0%)	1603 (0.9%)
Type 1 Diabetes Mellitus	741 (0.4%)	804 (0.5%)

SARS-CoV-2 - Intracranial Hemorrhage	1, N = 182819	0, N = 182819
Age	34 (25, 47)	34 (25, 47)
Age Groups		
16-39	111395 (61%)	111395 (61%)
40-49	30477 (17%)	30477 (17%)
50-59	19313 (11%)	19313 (11%)
60-69	13287 (7.3%)	13287 (7.3%)
70-79	6033 (3.3%)	6033 (3.3%)
80+	2314 (1.3%)	2314 (1.3%)
Sex		
F	99554 (54%)	99554 (54%)
M	83265 (46%)	83265 (46%)
Population Sector		
General Jewish	96134 (53%)	96134 (53%)
Arab	64943 (36%)	64943 (36%)
Ultra-Orthodox Jewish	21742 (12%)	21742 (12%)
CDC Risk Factor Count		
0	113418 (62%)	113418 (62%)
1	44071 (24%)	44071 (24%)
2	13127 (7.2%)	13127 (7.2%)
3	5849 (3.2%)	5849 (3.2%)
4+	6354 (3.5%)	6354 (3.5%)
Flu Vaccinations in the Last 5 Years		
0	127018 (69%)	127858 (70%)
1-2	31666 (17%)	31398 (17%)
3-4	13211 (7.2%)	12945 (7.1%)
5+	10924 (6.0%)	10618 (5.8%)
Cancer	2304 (1.3%)	2611 (1.4%)
CDC "Certain" Risk Criteria		
Chronic Kidney Disease	9284 (5.1%)	9125 (5.0%)
Chronic Obstructive Pulmonary Disease	2038 (1.1%)	2543 (1.4%)
Heart Disease	6632 (3.6%)	6885 (3.8%)
Solid Organ Transplant	179 (<0.1%)	164 (<0.1%)
Obesity (BMI 30-40)	32997 (18%)	30912 (17%)
Severe Obesity (BMI 40+)	3802 (2.1%)	3376 (1.8%)
Pregnancy	5263 (2.9%)	5263 (2.9%)
Sickle Cell Disease	52 (<0.1%)	61 (<0.1%)
Smoking	19830 (11%)	31986 (17%)
Type 2 Diabetes Mellitus	13932 (7.6%)	13857 (7.6%)
Asthma	10821 (5.9%)	11176 (6.1%)
CDC "Possible" Risk Criteria		
Cerebrovascular Disease	2726 (1.5%)	2754 (1.5%)
Other Respiratory Disease	371 (0.2%)	415 (0.2%)
Hypertension	17423 (9.5%)	17614 (9.6%)
Immunosuppression	4929 (2.7%)	5049 (2.8%)
Neurological Disease	5711 (3.1%)	5980 (3.3%)
Liver Disease	2693 (1.5%)	2899 (1.6%)
Overweight (BMI 25-30)	56459 (31%)	52952 (29%)
Thalassemia	1764 (1.0%)	1755 (1.0%)
Type 1 Diabetes Mellitus	767 (0.4%)	842 (0.5%)

SARS-CoV-2 - Lymphadenopathy	1, N = 159880	0, N = 159880
Age	35 (25, 48)	35 (25, 48)
Age Groups		
16-39	95687 (60%)	95687 (60%)
40-49	27016 (17%)	27016 (17%)
50-59	17303 (11%)	17303 (11%)
60-69	12043 (7.5%)	12043 (7.5%)
70-79	5608 (3.5%)	5608 (3.5%)
80+	2223 (1.4%)	2223 (1.4%)
Sex		
F	85039 (53%)	85039 (53%)
M	74841 (47%)	74841 (47%)
Population Sector		
General Jewish	83068 (52%)	83068 (52%)
Arab	57886 (36%)	57886 (36%)
Ultra-Orthodox Jewish	18926 (12%)	18926 (12%)
CDC Risk Factor Count		
0	99204 (62%)	99204 (62%)
1	38164 (24%)	38164 (24%)
2	11421 (7.1%)	11421 (7.1%)
3	5200 (3.3%)	5200 (3.3%)
4+	5891 (3.7%)	5891 (3.7%)
Flu Vaccinations in the Last 5 Years		
0	111432 (70%)	112235 (70%)
1-2	27232 (17%)	27032 (17%)
3-4	11545 (7.2%)	11249 (7.0%)
5+	9671 (6.0%)	9364 (5.9%)
Cancer	1884 (1.2%)	2108 (1.3%)
CDC "Certain" Risk Criteria		
Chronic Kidney Disease	8167 (5.1%)	8005 (5.0%)
Chronic Obstructive Pulmonary Disease	1853 (1.2%)	2227 (1.4%)
Heart Disease	6122 (3.8%)	6330 (4.0%)
Solid Organ Transplant	166 (0.1%)	150 (<0.1%)
Obesity (BMI 30-40)	29150 (18%)	27298 (17%)
Severe Obesity (BMI 40+)	3335 (2.1%)	2975 (1.9%)
Pregnancy	4313 (2.7%)	4313 (2.7%)
Sickle Cell Disease	47 (<0.1%)	53 (<0.1%)
Smoking	17390 (11%)	28079 (18%)
Type 2 Diabetes Mellitus	12637 (7.9%)	12573 (7.9%)
Asthma	8919 (5.6%)	9238 (5.8%)
CDC "Possible" Risk Criteria		
Cerebrovascular Disease	2897 (1.8%)	3023 (1.9%)
Other Respiratory Disease	304 (0.2%)	336 (0.2%)
Hypertension	15858 (9.9%)	16041 (10%)
Immunosuppression	4120 (2.6%)	4081 (2.6%)
Neurological Disease	5125 (3.2%)	5379 (3.4%)
Liver Disease	2344 (1.5%)	2491 (1.6%)
Overweight (BMI 25-30)	50172 (31%)	46982 (29%)
Thalassemia	1442 (0.9%)	1479 (0.9%)
Type 1 Diabetes Mellitus	679 (0.4%)	763 (0.5%)

SARS-CoV-2 - Lymphopenia	1, N = 183693	0, N = 183693
Age	35 (25, 48)	35 (25, 48)
Age Groups		
16-39	111363 (61%)	111363 (61%)
40-49	30527 (17%)	30527 (17%)
50-59	19416 (11%)	19416 (11%)
60-69	13553 (7.4%)	13553 (7.4%)
70-79	6339 (3.5%)	6339 (3.5%)
80+	2495 (1.4%)	2495 (1.4%)
Sex		
F	99860 (54%)	99860 (54%)
M	83833 (46%)	83833 (46%)
Population Sector		
General Jewish	96699 (53%)	96699 (53%)
Arab	65210 (35%)	65210 (35%)
Ultra-Orthodox Jewish	21784 (12%)	21784 (12%)
CDC Risk Factor Count		
0	113363 (62%)	113363 (62%)
1	44128 (24%)	44128 (24%)
2	13268 (7.2%)	13268 (7.2%)
3	6017 (3.3%)	6017 (3.3%)
4+	6917 (3.8%)	6917 (3.8%)
Flu Vaccinations in the Last 5 Years		
0	127084 (69%)	127943 (70%)
1-2	31816 (17%)	31555 (17%)
3-4	13470 (7.3%)	13213 (7.2%)
5+	11323 (6.2%)	10982 (6.0%)
Cancer	2357 (1.3%)	2663 (1.4%)
CDC "Certain" Risk Criteria		
Chronic Kidney Disease	9593 (5.2%)	9388 (5.1%)
Chronic Obstructive Pulmonary Disease	2165 (1.2%)	2636 (1.4%)
Heart Disease	7024 (3.8%)	7263 (4.0%)
Solid Organ Transplant	179 (<0.1%)	169 (<0.1%)
Obesity (BMI 30-40)	33362 (18%)	31208 (17%)
Severe Obesity (BMI 40+)	3852 (2.1%)	3434 (1.9%)
Pregnancy	5259 (2.9%)	5259 (2.9%)
Sickle Cell Disease	55 (<0.1%)	61 (<0.1%)
Smoking	19971 (11%)	32191 (18%)
Type 2 Diabetes Mellitus	14409 (7.8%)	14319 (7.8%)
Asthma	10923 (5.9%)	11270 (6.1%)
CDC "Possible" Risk Criteria		
Cerebrovascular Disease	3406 (1.9%)	3484 (1.9%)
Other Respiratory Disease	377 (0.2%)	429 (0.2%)
Hypertension	18140 (9.9%)	18318 (10.0%)
Immunosuppression	5001 (2.7%)	5120 (2.8%)
Neurological Disease	6004 (3.3%)	6314 (3.4%)
Liver Disease	2737 (1.5%)	2960 (1.6%)
Overweight (BMI 25-30)	56783 (31%)	53326 (29%)
Thalassemia	1776 (1.0%)	1763 (1.0%)
Type 1 Diabetes Mellitus	799 (0.4%)	866 (0.5%)

SARS-CoV-2 - Myocardial Infarction	1, N = 176200	0, N = 176200
Age	34 (24, 46)	34 (24, 46)
Age Groups		
16-39	111364 (63%)	111364 (63%)
40-49	30119 (17%)	30119 (17%)
50-59	18073 (10%)	18073 (10%)
60-69	11082 (6.3%)	11082 (6.3%)
70-79	4187 (2.4%)	4187 (2.4%)
80+	1375 (0.8%)	1375 (0.8%)
Sex		
F	97519 (55%)	97519 (55%)
M	78681 (45%)	78681 (45%)
Population Sector		
General Jewish	92421 (52%)	92421 (52%)
Arab	62397 (35%)	62397 (35%)
Ultra-Orthodox Jewish	21382 (12%)	21382 (12%)
CDC Risk Factor Count		
0	113382 (64%)	113382 (64%)
1	43542 (25%)	43542 (25%)
2	12019 (6.8%)	12019 (6.8%)
3	4453 (2.5%)	4453 (2.5%)
4+	2804 (1.6%)	2804 (1.6%)
Flu Vaccinations in the Last 5 Years		
0	126383 (72%)	127280 (72%)
1-2	30352 (17%)	29964 (17%)
3-4	11251 (6.4%)	11104 (6.3%)
5+	8214 (4.7%)	7852 (4.5%)
Cancer	1849 (1.0%)	2117 (1.2%)
CDC "Certain" Risk Criteria		
Chronic Kidney Disease	7133 (4.0%)	7117 (4.0%)
Chronic Obstructive Pulmonary Disease	1245 (0.7%)	1611 (0.9%)
Heart Disease	950 (0.5%)	931 (0.5%)
Solid Organ Transplant	110 (<0.1%)	102 (<0.1%)
Obesity (BMI 30-40)	30262 (17%)	28440 (16%)
Severe Obesity (BMI 40+)	3474 (2.0%)	3135 (1.8%)
Pregnancy	5257 (3.0%)	5257 (3.0%)
Sickle Cell Disease	52 (<0.1%)	57 (<0.1%)
Smoking	18998 (11%)	30442 (17%)
Type 2 Diabetes Mellitus	10272 (5.8%)	10285 (5.8%)
Asthma	10177 (5.8%)	10511 (6.0%)
CDC "Possible" Risk Criteria		
Cerebrovascular Disease	1916 (1.1%)	2009 (1.1%)
Other Respiratory Disease	275 (0.2%)	321 (0.2%)
Hypertension	12566 (7.1%)	12754 (7.2%)
Immunosuppression	4181 (2.4%)	4348 (2.5%)
Neurological Disease	5006 (2.8%)	5291 (3.0%)
Liver Disease	2188 (1.2%)	2436 (1.4%)
Overweight (BMI 25-30)	53986 (31%)	50500 (29%)
Thalassemia	1661 (0.9%)	1648 (0.9%)
Type 1 Diabetes Mellitus	588 (0.3%)	686 (0.4%)

SARS-CoV-2 - Myocarditis	1, N = 183710	0, N = 183710
Age	35 (25, 48)	35 (25, 48)
Age Groups		
16-39	111369 (61%)	111369 (61%)
40-49	30481 (17%)	30481 (17%)
50-59	19429 (11%)	19429 (11%)
60-69	13577 (7.4%)	13577 (7.4%)
70-79	6349 (3.5%)	6349 (3.5%)
80+	2505 (1.4%)	2505 (1.4%)
Sex		
F	99982 (54%)	99982 (54%)
M	83728 (46%)	83728 (46%)
Population Sector		
General Jewish	96704 (53%)	96704 (53%)
Arab	65205 (35%)	65205 (35%)
Ultra-Orthodox Jewish	21801 (12%)	21801 (12%)
CDC Risk Factor Count		
0	113374 (62%)	113374 (62%)
1	44116 (24%)	44116 (24%)
2	13256 (7.2%)	13256 (7.2%)
3	6021 (3.3%)	6021 (3.3%)
4+	6943 (3.8%)	6943 (3.8%)
Flu Vaccinations in the Last 5 Years		
0	127066 (69%)	127893 (70%)
1-2	31816 (17%)	31580 (17%)
3-4	13482 (7.3%)	13234 (7.2%)
5+	11346 (6.2%)	11003 (6.0%)
Cancer	2373 (1.3%)	2674 (1.5%)
CDC "Certain" Risk Criteria		
Chronic Kidney Disease	9612 (5.2%)	9438 (5.1%)
Chronic Obstructive Pulmonary Disease	2168 (1.2%)	2639 (1.4%)
Heart Disease	6999 (3.8%)	7224 (3.9%)
Solid Organ Transplant	191 (0.1%)	171 (<0.1%)
Obesity (BMI 30-40)	33325 (18%)	31194 (17%)
Severe Obesity (BMI 40+)	3856 (2.1%)	3418 (1.9%)
Pregnancy	5263 (2.9%)	5263 (2.9%)
Sickle Cell Disease	55 (<0.1%)	61 (<0.1%)
Smoking	19941 (11%)	32146 (17%)
Type 2 Diabetes Mellitus	14421 (7.8%)	14352 (7.8%)
Asthma	10930 (5.9%)	11286 (6.1%)
CDC "Possible" Risk Criteria		
Cerebrovascular Disease	3418 (1.9%)	3500 (1.9%)
Other Respiratory Disease	384 (0.2%)	431 (0.2%)
Hypertension	18152 (9.9%)	18338 (10.0%)
Immunosuppression	5018 (2.7%)	5128 (2.8%)
Neurological Disease	6032 (3.3%)	6323 (3.4%)
Liver Disease	2755 (1.5%)	2975 (1.6%)
Overweight (BMI 25-30)	56776 (31%)	53292 (29%)
Thalassemia	1773 (1.0%)	1762 (1.0%)
Type 1 Diabetes Mellitus	802 (0.4%)	868 (0.5%)

SARS-CoV-2 - Neutropenia	1, N = 179528	0, N = 179528
Age	34 (25, 48)	34 (25, 48)
Age Groups		
16-39	109149 (61%)	109149 (61%)
40-49	29843 (17%)	29843 (17%)
50-59	18909 (11%)	18909 (11%)
60-69	13144 (7.3%)	13144 (7.3%)
70-79	6104 (3.4%)	6104 (3.4%)
80+	2379 (1.3%)	2379 (1.3%)
Sex		
F	97047 (54%)	97047 (54%)
M	82481 (46%)	82481 (46%)
Population Sector		
General Jewish	94226 (52%)	94226 (52%)
Arab	63947 (36%)	63947 (36%)
Ultra-Orthodox Jewish	21355 (12%)	21355 (12%)
CDC Risk Factor Count		
0	111029 (62%)	111029 (62%)
1	43146 (24%)	43146 (24%)
2	12888 (7.2%)	12888 (7.2%)
3	5824 (3.2%)	5824 (3.2%)
4+	6641 (3.7%)	6641 (3.7%)
Flu Vaccinations in the Last 5 Years		
0	124734 (69%)	125538 (70%)
1-2	30916 (17%)	30674 (17%)
3-4	13001 (7.2%)	12780 (7.1%)
5+	10877 (6.1%)	10536 (5.9%)
Cancer	2141 (1.2%)	2419 (1.3%)
CDC "Certain" Risk Criteria		
Chronic Kidney Disease	9245 (5.1%)	9050 (5.0%)
Chronic Obstructive Pulmonary Disease	2089 (1.2%)	2550 (1.4%)
Heart Disease	6792 (3.8%)	7066 (3.9%)
Solid Organ Transplant	155 (<0.1%)	154 (<0.1%)
Obesity (BMI 30-40)	32725 (18%)	30632 (17%)
Severe Obesity (BMI 40+)	3792 (2.1%)	3364 (1.9%)
Pregnancy	5114 (2.8%)	5114 (2.8%)
Sickle Cell Disease	52 (<0.1%)	63 (<0.1%)
Smoking	19659 (11%)	31673 (18%)
Type 2 Diabetes Mellitus	14027 (7.8%)	13971 (7.8%)
Asthma	10617 (5.9%)	10933 (6.1%)
CDC "Possible" Risk Criteria		
Cerebrovascular Disease	3292 (1.8%)	3379 (1.9%)
Other Respiratory Disease	354 (0.2%)	400 (0.2%)
Hypertension	17605 (9.8%)	17792 (9.9%)
Immunosuppression	4704 (2.6%)	4825 (2.7%)
Neurological Disease	5761 (3.2%)	6061 (3.4%)
Liver Disease	2591 (1.4%)	2785 (1.6%)
Overweight (BMI 25-30)	55614 (31%)	52249 (29%)
Thalassemia	1726 (1.0%)	1704 (0.9%)
Type 1 Diabetes Mellitus	782 (0.4%)	846 (0.5%)

SARS-CoV-2 - Other Thrombosis	1, N = 182553	0, N = 182553
Age	34 (24, 47)	34 (25, 47)
Age Groups		
16-39	111270 (61%)	111270 (61%)
40-49	30337 (17%)	30337 (17%)
50-59	19165 (10%)	19165 (10%)
60-69	13293 (7.3%)	13293 (7.3%)
70-79	6102 (3.3%)	6102 (3.3%)
80+	2386 (1.3%)	2386 (1.3%)
Sex		
F	99242 (54%)	99242 (54%)
M	83311 (46%)	83311 (46%)
Population Sector		
General Jewish	96058 (53%)	96058 (53%)
Arab	64795 (35%)	64795 (35%)
Ultra-Orthodox Jewish	21700 (12%)	21700 (12%)
CDC Risk Factor Count		
0	113251 (62%)	113251 (62%)
1	43879 (24%)	43879 (24%)
2	13068 (7.2%)	13068 (7.2%)
3	5840 (3.2%)	5840 (3.2%)
4+	6515 (3.6%)	6515 (3.6%)
Flu Vaccinations in the Last 5 Years		
0	126806 (69%)	127626 (70%)
1-2	31561 (17%)	31314 (17%)
3-4	13201 (7.2%)	12984 (7.1%)
5+	10985 (6.0%)	10629 (5.8%)
Cancer	2277 (1.2%)	2572 (1.4%)
CDC "Certain" Risk Criteria		
Chronic Kidney Disease	9273 (5.1%)	9121 (5.0%)
Chronic Obstructive Pulmonary Disease	2064 (1.1%)	2500 (1.4%)
Heart Disease	6628 (3.6%)	6852 (3.8%)
Solid Organ Transplant	170 (<0.1%)	154 (<0.1%)
Obesity (BMI 30-40)	32865 (18%)	30785 (17%)
Severe Obesity (BMI 40+)	3790 (2.1%)	3377 (1.8%)
Pregnancy	5247 (2.9%)	5247 (2.9%)
Sickle Cell Disease	54 (<0.1%)	61 (<0.1%)
Smoking	19795 (11%)	31875 (17%)
Type 2 Diabetes Mellitus	13953 (7.6%)	13930 (7.6%)
Asthma	10819 (5.9%)	11157 (6.1%)
CDC "Possible" Risk Criteria		
Cerebrovascular Disease	3202 (1.8%)	3299 (1.8%)
Other Respiratory Disease	372 (0.2%)	417 (0.2%)
Hypertension	17549 (9.6%)	17718 (9.7%)
Immunosuppression	4884 (2.7%)	4956 (2.7%)
Neurological Disease	5883 (3.2%)	6151 (3.4%)
Liver Disease	2625 (1.4%)	2865 (1.6%)
Overweight (BMI 25-30)	56389 (31%)	52895 (29%)
Thalassemia	1749 (1.0%)	1745 (1.0%)
Type 1 Diabetes Mellitus	764 (0.4%)	843 (0.5%)

SARS-CoV-2 - Paresthesia	1, N = 161836	0, N = 161836
Age	33 (24, 45)	33 (24, 45)
Age Groups		
16-39	105044 (65%)	105044 (65%)
40-49	25399 (16%)	25399 (16%)
50-59	14916 (9.2%)	14916 (9.2%)
60-69	9989 (6.2%)	9989 (6.2%)
70-79	4628 (2.9%)	4628 (2.9%)
80+	1860 (1.1%)	1860 (1.1%)
Sex		
F	86161 (53%)	86161 (53%)
M	75675 (47%)	75675 (47%)
Population Sector		
General Jewish	85419 (53%)	85419 (53%)
Arab	55984 (35%)	55984 (35%)
Ultra-Orthodox Jewish	20433 (13%)	20433 (13%)
CDC Risk Factor Count		
0	105228 (65%)	105228 (65%)
1	38120 (24%)	38120 (24%)
2	10142 (6.3%)	10142 (6.3%)
3	4097 (2.5%)	4097 (2.5%)
4+	4249 (2.6%)	4249 (2.6%)
Flu Vaccinations in the Last 5 Years		
0	116168 (72%)	116919 (72%)
1-2	27328 (17%)	26998 (17%)
3-4	10307 (6.4%)	10127 (6.3%)
5+	8033 (5.0%)	7792 (4.8%)
Cancer	1717 (1.1%)	1964 (1.2%)
CDC "Certain" Risk Criteria		
Chronic Kidney Disease	7014 (4.3%)	6957 (4.3%)
Chronic Obstructive Pulmonary Disease	1499 (0.9%)	1825 (1.1%)
Heart Disease	4752 (2.9%)	4929 (3.0%)
Solid Organ Transplant	127 (<0.1%)	112 (<0.1%)
Obesity (BMI 30-40)	26582 (16%)	24893 (15%)
Severe Obesity (BMI 40+)	2977 (1.8%)	2670 (1.6%)
Pregnancy	4839 (3.0%)	4839 (3.0%)
Sickle Cell Disease	47 (<0.1%)	45 (<0.1%)
Smoking	17468 (11%)	27871 (17%)
Type 2 Diabetes Mellitus	10121 (6.3%)	10122 (6.3%)
Asthma	9341 (5.8%)	9618 (5.9%)
CDC "Possible" Risk Criteria		
Cerebrovascular Disease	1994 (1.2%)	2082 (1.3%)
Other Respiratory Disease	267 (0.2%)	307 (0.2%)
Hypertension	12626 (7.8%)	12832 (7.9%)
Immunosuppression	3509 (2.2%)	3600 (2.2%)
Neurological Disease	4469 (2.8%)	4603 (2.8%)
Liver Disease	1977 (1.2%)	2217 (1.4%)
Overweight (BMI 25-30)	49086 (30%)	45748 (28%)
Thalassemia	1474 (0.9%)	1493 (0.9%)
Type 1 Diabetes Mellitus	596 (0.4%)	648 (0.4%)

SARS-CoV-2 - Pulmonary Embolism	1, N = 183311	0, N = 183311
Age	34 (25, 48)	34 (25, 48)
Age Groups		
16-39	111399 (61%)	111399 (61%)
40-49	30445 (17%)	30445 (17%)
50-59	19342 (11%)	19342 (11%)
60-69	13471 (7.3%)	13471 (7.3%)
70-79	6230 (3.4%)	6230 (3.4%)
80+	2424 (1.3%)	2424 (1.3%)
Sex		
F	99596 (54%)	99596 (54%)
M	83715 (46%)	83715 (46%)
Population Sector		
General Jewish	96492 (53%)	96492 (53%)
Arab	65063 (35%)	65063 (35%)
Ultra-Orthodox Jewish	21756 (12%)	21756 (12%)
CDC Risk Factor Count		
0	113371 (62%)	113371 (62%)
1	44071 (24%)	44071 (24%)
2	13182 (7.2%)	13182 (7.2%)
3	5953 (3.2%)	5953 (3.2%)
4+	6734 (3.7%)	6734 (3.7%)
Flu Vaccinations in the Last 5 Years		
0	127045 (69%)	127879 (70%)
1-2	31726 (17%)	31500 (17%)
3-4	13346 (7.3%)	13119 (7.2%)
5+	11194 (6.1%)	10813 (5.9%)
Cancer	2316 (1.3%)	2618 (1.4%)
CDC "Certain" Risk Criteria		
Chronic Kidney Disease	9471 (5.2%)	9301 (5.1%)
Chronic Obstructive Pulmonary Disease	2103 (1.1%)	2562 (1.4%)
Heart Disease	6863 (3.7%)	7100 (3.9%)
Solid Organ Transplant	184 (0.1%)	169 (<0.1%)
Obesity (BMI 30-40)	33150 (18%)	30992 (17%)
Severe Obesity (BMI 40+)	3814 (2.1%)	3388 (1.8%)
Pregnancy	5253 (2.9%)	5253 (2.9%)
Sickle Cell Disease	55 (<0.1%)	61 (<0.1%)
Smoking	19920 (11%)	32088 (18%)
Type 2 Diabetes Mellitus	14228 (7.8%)	14149 (7.7%)
Asthma	10861 (5.9%)	11232 (6.1%)
CDC "Possible" Risk Criteria		
Cerebrovascular Disease	3336 (1.8%)	3418 (1.9%)
Other Respiratory Disease	372 (0.2%)	422 (0.2%)
Hypertension	17879 (9.8%)	18044 (9.8%)
Immunosuppression	4943 (2.7%)	5051 (2.8%)
Neurological Disease	5964 (3.3%)	6258 (3.4%)
Liver Disease	2697 (1.5%)	2936 (1.6%)
Overweight (BMI 25-30)	56654 (31%)	53218 (29%)
Thalassemia	1766 (1.0%)	1757 (1.0%)
Type 1 Diabetes Mellitus	786 (0.4%)	862 (0.5%)

SARS-CoV-2 - Pericarditis	1, N = 183158	0, N = 183158
Age	34 (25, 48)	34 (25, 48)
Age Groups		
16-39	111261 (61%)	111261 (61%)
40-49	30403 (17%)	30403 (17%)
50-59	19311 (11%)	19311 (11%)
60-69	13452 (7.3%)	13452 (7.3%)
70-79	6266 (3.4%)	6266 (3.4%)
80+	2465 (1.3%)	2465 (1.3%)
Sex		
F	99746 (54%)	99746 (54%)
M	83412 (46%)	83412 (46%)
Population Sector		
General Jewish	96464 (53%)	96464 (53%)
Arab	64937 (35%)	64937 (35%)
Ultra-Orthodox Jewish	21757 (12%)	21757 (12%)
CDC Risk Factor Count		
0	113256 (62%)	113256 (62%)
1	44010 (24%)	44010 (24%)
2	13188 (7.2%)	13188 (7.2%)
3	5937 (3.2%)	5937 (3.2%)
4+	6767 (3.7%)	6767 (3.7%)
Flu Vaccinations in the Last 5 Years		
0	126877 (69%)	127742 (70%)
1-2	31724 (17%)	31479 (17%)
3-4	13375 (7.3%)	13096 (7.2%)
5+	11182 (6.1%)	10841 (5.9%)
Cancer	2338 (1.3%)	2644 (1.4%)
CDC "Certain" Risk Criteria		
Chronic Kidney Disease	9473 (5.2%)	9320 (5.1%)
Chronic Obstructive Pulmonary Disease	2114 (1.2%)	2576 (1.4%)
Heart Disease	6801 (3.7%)	7043 (3.8%)
Solid Organ Transplant	173 (<0.1%)	164 (<0.1%)
Obesity (BMI 30-40)	33128 (18%)	31016 (17%)
Severe Obesity (BMI 40+)	3824 (2.1%)	3408 (1.9%)
Pregnancy	5262 (2.9%)	5262 (2.9%)
Sickle Cell Disease	55 (<0.1%)	61 (<0.1%)
Smoking	19875 (11%)	32058 (18%)
Type 2 Diabetes Mellitus	14235 (7.8%)	14157 (7.7%)
Asthma	10869 (5.9%)	11215 (6.1%)
CDC "Possible" Risk Criteria		
Cerebrovascular Disease	3336 (1.8%)	3441 (1.9%)
Other Respiratory Disease	373 (0.2%)	420 (0.2%)
Hypertension	17904 (9.8%)	18090 (9.9%)
Immunosuppression	4935 (2.7%)	5047 (2.8%)
Neurological Disease	5990 (3.3%)	6275 (3.4%)
Liver Disease	2722 (1.5%)	2932 (1.6%)
Overweight (BMI 25-30)	56591 (31%)	53096 (29%)
Thalassemia	1771 (1.0%)	1749 (1.0%)
Type 1 Diabetes Mellitus	793 (0.4%)	854 (0.5%)

SARS-CoV-2 - Seizures	1, N = 178402	0, N = 178402
Age	35 (25, 48)	35 (25, 48)
Age Groups		
16-39	108194 (61%)	108194 (61%)
40-49	29780 (17%)	29780 (17%)
50-59	18896 (11%)	18896 (11%)
60-69	13110 (7.3%)	13110 (7.3%)
70-79	6058 (3.4%)	6058 (3.4%)
80+	2364 (1.3%)	2364 (1.3%)
Sex		
F	97143 (54%)	97143 (54%)
M	81259 (46%)	81259 (46%)
Population Sector		
General Jewish	93537 (52%)	93537 (52%)
Arab	63506 (36%)	63506 (36%)
Ultra-Orthodox Jewish	21359 (12%)	21359 (12%)
CDC Risk Factor Count		
0	111777 (63%)	111777 (63%)
1	42096 (24%)	42096 (24%)
2	12438 (7.0%)	12438 (7.0%)
3	5688 (3.2%)	5688 (3.2%)
4+	6403 (3.6%)	6403 (3.6%)
Flu Vaccinations in the Last 5 Years		
0	124229 (70%)	124876 (70%)
1-2	30791 (17%)	30484 (17%)
3-4	12805 (7.2%)	12621 (7.1%)
5+	10577 (5.9%)	10421 (5.8%)
Cancer	2243 (1.3%)	2529 (1.4%)
CDC "Certain" Risk Criteria		
Chronic Kidney Disease	9131 (5.1%)	8955 (5.0%)
Chronic Obstructive Pulmonary Disease	2033 (1.1%)	2495 (1.4%)
Heart Disease	6677 (3.7%)	6887 (3.9%)
Solid Organ Transplant	174 (<0.1%)	154 (<0.1%)
Obesity (BMI 30-40)	32239 (18%)	30181 (17%)
Severe Obesity (BMI 40+)	3679 (2.1%)	3284 (1.8%)
Pregnancy	5153 (2.9%)	5153 (2.9%)
Sickle Cell Disease	54 (<0.1%)	57 (<0.1%)
Smoking	19406 (11%)	31213 (17%)
Type 2 Diabetes Mellitus	13776 (7.7%)	13728 (7.7%)
Asthma	10414 (5.8%)	10810 (6.1%)
CDC "Possible" Risk Criteria		
Cerebrovascular Disease	3068 (1.7%)	3117 (1.7%)
Other Respiratory Disease	361 (0.2%)	412 (0.2%)
Hypertension	17314 (9.7%)	17502 (9.8%)
Immunosuppression	4769 (2.7%)	4868 (2.7%)
Neurological Disease	3964 (2.2%)	4157 (2.3%)
Liver Disease	2604 (1.5%)	2789 (1.6%)
Overweight (BMI 25-30)	55286 (31%)	51950 (29%)
Thalassemia	1694 (0.9%)	1660 (0.9%)
Type 1 Diabetes Mellitus	728 (0.4%)	798 (0.4%)

SARS-CoV-2 - Syncope	1, N = 168207	0, N = 168207
Age	34 (24, 47)	34 (24, 47)
Age Groups		
16-39	102889 (61%)	102889 (61%)
40-49	28311 (17%)	28311 (17%)
50-59	17744 (11%)	17744 (11%)
60-69	12103 (7.2%)	12103 (7.2%)
70-79	5287 (3.1%)	5287 (3.1%)
80+	1873 (1.1%)	1873 (1.1%)
Sex		
F	89805 (53%)	89805 (53%)
M	78402 (47%)	78402 (47%)
Population Sector		
General Jewish	87415 (52%)	87415 (52%)
Arab	60150 (36%)	60150 (36%)
Ultra-Orthodox Jewish	20642 (12%)	20642 (12%)
CDC Risk Factor Count		
0	105762 (63%)	105762 (63%)
1	40231 (24%)	40231 (24%)
2	11733 (7.0%)	11733 (7.0%)
3	5158 (3.1%)	5158 (3.1%)
4+	5323 (3.2%)	5323 (3.2%)
Flu Vaccinations in the Last 5 Years		
0	118207 (70%)	118903 (71%)
1-2	28708 (17%)	28437 (17%)
3-4	11764 (7.0%)	11598 (6.9%)
5+	9528 (5.7%)	9269 (5.5%)
Cancer	1991 (1.2%)	2257 (1.3%)
CDC "Certain" Risk Criteria		
Chronic Kidney Disease	8000 (4.8%)	7925 (4.7%)
Chronic Obstructive Pulmonary Disease	1694 (1.0%)	2110 (1.3%)
Heart Disease	5512 (3.3%)	5736 (3.4%)
Solid Organ Transplant	154 (<0.1%)	144 (<0.1%)
Obesity (BMI 30-40)	30045 (18%)	28077 (17%)
Severe Obesity (BMI 40+)	3439 (2.0%)	3052 (1.8%)
Pregnancy	4627 (2.8%)	4627 (2.8%)
Sickle Cell Disease	49 (<0.1%)	58 (<0.1%)
Smoking	18203 (11%)	29294 (17%)
Type 2 Diabetes Mellitus	12401 (7.4%)	12359 (7.3%)
Asthma	9590 (5.7%)	9951 (5.9%)
CDC "Possible" Risk Criteria		
Cerebrovascular Disease	2541 (1.5%)	2620 (1.6%)
Other Respiratory Disease	307 (0.2%)	359 (0.2%)
Hypertension	15268 (9.1%)	15405 (9.2%)
Immunosuppression	4284 (2.5%)	4410 (2.6%)
Neurological Disease	4823 (2.9%)	5061 (3.0%)
Liver Disease	2318 (1.4%)	2490 (1.5%)
Overweight (BMI 25-30)	52134 (31%)	48890 (29%)
Thalassemia	1555 (0.9%)	1544 (0.9%)
Type 1 Diabetes Mellitus	672 (0.4%)	706 (0.4%)

SARS-CoV-2 - Thrombocytopenia	1, N = 180222	0, N = 180222
Age	34 (24, 48)	34 (25, 48)
Age Groups		
16-39	109574 (61%)	109574 (61%)
40-49	29949 (17%)	29949 (17%)
50-59	19057 (11%)	19057 (11%)
60-69	13223 (7.3%)	13223 (7.3%)
70-79	6078 (3.4%)	6078 (3.4%)
80+	2341 (1.3%)	2341 (1.3%)
Sex		
F	97723 (54%)	97723 (54%)
M	82499 (46%)	82499 (46%)
Population Sector		
General Jewish	94766 (53%)	94766 (53%)
Arab	64273 (36%)	64273 (36%)
Ultra-Orthodox Jewish	21183 (12%)	21183 (12%)
CDC Risk Factor Count		
0	111668 (62%)	111668 (62%)
1	43297 (24%)	43297 (24%)
2	12931 (7.2%)	12931 (7.2%)
3	5799 (3.2%)	5799 (3.2%)
4+	6527 (3.6%)	6527 (3.6%)
Flu Vaccinations in the Last 5 Years		
0	125306 (70%)	126098 (70%)
1-2	31039 (17%)	30802 (17%)
3-4	13041 (7.2%)	12829 (7.1%)
5+	10836 (6.0%)	10493 (5.8%)
Cancer	2220 (1.2%)	2485 (1.4%)
CDC "Certain" Risk Criteria		
Chronic Kidney Disease	9188 (5.1%)	9012 (5.0%)
Chronic Obstructive Pulmonary Disease	2041 (1.1%)	2519 (1.4%)
Heart Disease	6664 (3.7%)	6912 (3.8%)
Solid Organ Transplant	152 (<0.1%)	142 (<0.1%)
Obesity (BMI 30-40)	32655 (18%)	30542 (17%)
Severe Obesity (BMI 40+)	3773 (2.1%)	3367 (1.9%)
Pregnancy	5054 (2.8%)	5054 (2.8%)
Sickle Cell Disease	52 (<0.1%)	55 (<0.1%)
Smoking	19669 (11%)	31647 (18%)
Type 2 Diabetes Mellitus	13924 (7.7%)	13888 (7.7%)
Asthma	10686 (5.9%)	11048 (6.1%)
CDC "Possible" Risk Criteria		
Cerebrovascular Disease	3220 (1.8%)	3297 (1.8%)
Other Respiratory Disease	355 (0.2%)	401 (0.2%)
Hypertension	17500 (9.7%)	17663 (9.8%)
Immunosuppression	4755 (2.6%)	4859 (2.7%)
Neurological Disease	5757 (3.2%)	6046 (3.4%)
Liver Disease	2547 (1.4%)	2731 (1.5%)
Overweight (BMI 25-30)	55654 (31%)	52237 (29%)
Thalassemia	1712 (0.9%)	1708 (0.9%)
Type 1 Diabetes Mellitus	767 (0.4%)	839 (0.5%)

SARS-CoV-2 - Uveitis	1, N = 182687	0, N = 182687
Age	34 (25, 48)	34 (25, 48)
Age Groups		
16-39	111105 (61%)	111105 (61%)
40-49	30318 (17%)	30318 (17%)
50-59	19222 (11%)	19222 (11%)
60-69	13396 (7.3%)	13396 (7.3%)
70-79	6212 (3.4%)	6212 (3.4%)
80+	2434 (1.3%)	2434 (1.3%)
Sex		
F	99352 (54%)	99352 (54%)
M	83335 (46%)	83335 (46%)
Population Sector		
General Jewish	96172 (53%)	96172 (53%)
Arab	64801 (35%)	64801 (35%)
Ultra-Orthodox Jewish	21714 (12%)	21714 (12%)
CDC Risk Factor Count		
0	113024 (62%)	113024 (62%)
1	43882 (24%)	43882 (24%)
2	13093 (7.2%)	13093 (7.2%)
3	5908 (3.2%)	5908 (3.2%)
4+	6780 (3.7%)	6780 (3.7%)
Flu Vaccinations in the Last 5 Years		
0	126632 (69%)	127428 (70%)
1-2	31619 (17%)	31394 (17%)
3-4	13301 (7.3%)	13064 (7.2%)
5+	11135 (6.1%)	10801 (5.9%)
Cancer	2329 (1.3%)	2639 (1.4%)
CDC "Certain" Risk Criteria		
Chronic Kidney Disease	9442 (5.2%)	9279 (5.1%)
Chronic Obstructive Pulmonary Disease	2118 (1.2%)	2585 (1.4%)
Heart Disease	6901 (3.8%)	7146 (3.9%)
Solid Organ Transplant	186 (0.1%)	166 (<0.1%)
Obesity (BMI 30-40)	33044 (18%)	30905 (17%)
Severe Obesity (BMI 40+)	3817 (2.1%)	3401 (1.9%)
Pregnancy	5244 (2.9%)	5244 (2.9%)
Sickle Cell Disease	54 (<0.1%)	61 (<0.1%)
Smoking	19834 (11%)	31954 (17%)
Type 2 Diabetes Mellitus	14170 (7.8%)	14053 (7.7%)
Asthma	10839 (5.9%)	11201 (6.1%)
CDC "Possible" Risk Criteria		
Cerebrovascular Disease	3335 (1.8%)	3454 (1.9%)
Other Respiratory Disease	376 (0.2%)	417 (0.2%)
Hypertension	17824 (9.8%)	18005 (9.9%)
Immunosuppression	4924 (2.7%)	5008 (2.7%)
Neurological Disease	5948 (3.3%)	6265 (3.4%)
Liver Disease	2711 (1.5%)	2923 (1.6%)
Overweight (BMI 25-30)	56394 (31%)	52973 (29%)
Thalassemia	1764 (1.0%)	1754 (1.0%)
Type 1 Diabetes Mellitus	775 (0.4%)	857 (0.5%)

SARS-CoV-2 - Vertigo	1, N = 150911	0, N = 150911
Age	32 (23, 44)	32 (23, 44)
Age Groups		
16-39	100486 (67%)	100486 (67%)
40-49	23933 (16%)	23933 (16%)
50-59	13601 (9.0%)	13601 (9.0%)
60-69	8521 (5.6%)	8521 (5.6%)
70-79	3256 (2.2%)	3256 (2.2%)
80+	1114 (0.7%)	1114 (0.7%)
Sex		
F	77766 (52%)	77766 (52%)
M	73145 (48%)	73145 (48%)
Population Sector		
General Jewish	80066 (53%)	80066 (53%)
Arab	51249 (34%)	51249 (34%)
Ultra-Orthodox Jewish	19596 (13%)	19596 (13%)
CDC Risk Factor Count		
0	100213 (66%)	100213 (66%)
1	35407 (23%)	35407 (23%)
2	8761 (5.8%)	8761 (5.8%)
3	3370 (2.2%)	3370 (2.2%)
4+	3160 (2.1%)	3160 (2.1%)
Flu Vaccinations in the Last 5 Years		
0	110263 (73%)	110908 (73%)
1-2	25201 (17%)	24977 (17%)
3-4	8932 (5.9%)	8825 (5.8%)
5+	6515 (4.3%)	6201 (4.1%)
Cancer	1448 (1.0%)	1652 (1.1%)
CDC "Certain" Risk Criteria		
Chronic Kidney Disease	5943 (3.9%)	5950 (3.9%)
Chronic Obstructive Pulmonary Disease	1109 (0.7%)	1471 (1.0%)
Heart Disease	3700 (2.5%)	3883 (2.6%)
Solid Organ Transplant	114 (<0.1%)	104 (<0.1%)
Obesity (BMI 30-40)	23998 (16%)	22217 (15%)
Severe Obesity (BMI 40+)	2628 (1.7%)	2401 (1.6%)
Pregnancy	4426 (2.9%)	4426 (2.9%)
Sickle Cell Disease	39 (<0.1%)	48 (<0.1%)
Smoking	16793 (11%)	26720 (18%)
Type 2 Diabetes Mellitus	8424 (5.6%)	8370 (5.5%)
Asthma	8552 (5.7%)	8885 (5.9%)
CDC "Possible" Risk Criteria		
Cerebrovascular Disease	1516 (1.0%)	1557 (1.0%)
Other Respiratory Disease	223 (0.1%)	247 (0.2%)
Hypertension	10103 (6.7%)	10220 (6.8%)
Immunosuppression	3017 (2.0%)	3134 (2.1%)
Neurological Disease	3696 (2.4%)	3969 (2.6%)
Liver Disease	1679 (1.1%)	1935 (1.3%)
Overweight (BMI 25-30)	45299 (30%)	42372 (28%)
Thalassemia	1314 (0.9%)	1312 (0.9%)
Type 1 Diabetes Mellitus	511 (0.3%)	582 (0.4%)

SARS-CoV-2 - Herpes Zoster	1, N = 175693	0, N = 175693
Age	34 (24, 47)	34 (24, 47)
Age Groups		
16-39	108500 (62%)	108500 (62%)
40-49	29408 (17%)	29408 (17%)
50-59	18279 (10%)	18279 (10%)
60-69	12149 (6.9%)	12149 (6.9%)
70-79	5348 (3.0%)	5348 (3.0%)
80+	2009 (1.1%)	2009 (1.1%)
Sex		
F	95305 (54%)	95305 (54%)
M	80388 (46%)	80388 (46%)
Population Sector		
General Jewish	91755 (52%)	91755 (52%)
Arab	62972 (36%)	62972 (36%)
Ultra-Orthodox Jewish	20966 (12%)	20966 (12%)
CDC Risk Factor Count		
0	109997 (63%)	109997 (63%)
1	42179 (24%)	42179 (24%)
2	12250 (7.0%)	12250 (7.0%)
3	5344 (3.0%)	5344 (3.0%)
4+	5923 (3.4%)	5923 (3.4%)
Flu Vaccinations in the Last 5 Years		
0	123234 (70%)	123968 (71%)
1-2	30216 (17%)	29980 (17%)
3-4	12315 (7.0%)	12132 (6.9%)
5+	9928 (5.7%)	9613 (5.5%)
Cancer	2136 (1.2%)	2419 (1.4%)
CDC "Certain" Risk Criteria		
Chronic Kidney Disease	8689 (4.9%)	8516 (4.8%)
Chronic Obstructive Pulmonary Disease	1901 (1.1%)	2310 (1.3%)
Heart Disease	6095 (3.5%)	6330 (3.6%)
Solid Organ Transplant	156 (<0.1%)	144 (<0.1%)
Obesity (BMI 30-40)	31294 (18%)	29337 (17%)
Severe Obesity (BMI 40+)	3608 (2.1%)	3213 (1.8%)
Pregnancy	5095 (2.9%)	5095 (2.9%)
Sickle Cell Disease	54 (<0.1%)	62 (<0.1%)
Smoking	19167 (11%)	30829 (18%)
Type 2 Diabetes Mellitus	12860 (7.3%)	12820 (7.3%)
Asthma	10307 (5.9%)	10616 (6.0%)
CDC "Possible" Risk Criteria		
Cerebrovascular Disease	2924 (1.7%)	3034 (1.7%)
Other Respiratory Disease	327 (0.2%)	352 (0.2%)
Hypertension	16042 (9.1%)	16169 (9.2%)
Immunosuppression	4453 (2.5%)	4573 (2.6%)
Neurological Disease	5504 (3.1%)	5778 (3.3%)
Liver Disease	2499 (1.4%)	2731 (1.6%)
Overweight (BMI 25-30)	53983 (31%)	50692 (29%)
Thalassemia	1676 (1.0%)	1688 (1.0%)
Type 1 Diabetes Mellitus	739 (0.4%)	795 (0.5%)

Table S6 – Risk ratios and risk differences (per 100,000 persons) of potential adverse outcomes for SARS-CoV-2 vaccination and SARS-CoV-2 Infection

Estimates and 95% confidence intervals for the risk ratio and risk difference per 1,000 patients for different potential adverse outcomes following vaccination and SARS-CoV-2 Infection. Estimates were derived 42 days after exposure using the Kaplan-Meier estimator. Confidence intervals were estimated using the percentile bootstrap method with 500 repetitions. Estimates were only calculated for cells with more than 10 outcome events across both groups. RR: risk ratio; RD: risk difference; NA, not available.

Outcome	Vaccination					SARS-CoV-2				
	N	Events in Vaccinated Group	Events in Unvaccinated Group	Risk Ratio	Risk Difference (per 100,000)	N	Events in Infected Group	Events in Uninfected Group	Risk Ratio	Risk Difference (per 100,000)
Acute Kidney Injury	912,019	20	45	0.44 (0.23 to 0.73)	-4.58 (-7.83 to -1.75)	179,018	229	14	14.83 (9.24 to 28.75)	125.41 (106.97 to 142.57)
Anemia	709,267	298	378	0.79 (0.67 to 0.93)	-18.68 (-32.13 to -6.08)	131,963	259	143	1.77 (1.46 to 2.17)	97.81 (64.75 to 131.60)
Appendicitis	900,289	95	66	1.40 (1.02 to 2.01)	5.00 (0.29 to 9.86)	176,252	42	36	1.15 (0.73 to 1.85)	3.55 (-7.86 to 15.15)
Arrhythmia	856,152	254	284	0.89 (0.74 to 1.04)	-6.13 (-14.69 to 1.80)	169,220	342	85	3.83 (3.07 to 4.95)	166.11 (139.64 to 193.22)
Arthritis or Arthropathy	731,340	64	70	0.95 (0.65 to 1.34)	-0.76 (-6.26 to 4.20)	146,035	24	33	0.71 (0.40 to 1.20)	-7.85 (-20.15 to 4.13)
Bell's Palsy	923,692	81	59	1.32 (0.92 to 1.86)	3.49 (-1.05 to 7.76)	180,674	26	14	1.88 (0.95 to 3.82)	7.79 (-0.56 to 15.50)
Cerebrovascular Accident	917,598	45	55	0.84 (0.54 to 1.27)	-1.56 (-5.31 to 2.03)	180,086	43	19	2.12 (1.23 to 3.83)	13.67 (3.67 to 22.69)
Deep Vein Thrombosis	925,380	39	47	0.87 (0.55 to 1.40)	-1.09 (-4.54 to 2.70)	180,995	92	24	3.78 (2.50 to 6.59)	42.96 (29.93 to 56.61)
Herpes Simplex	876,328	219	205	1.13 (0.95 to 1.38)	4.85 (-1.89 to 12.35)	170,593	44	57	0.80 (0.53 to 1.21)	-7.58 (-21.21 to 6.44)
Herpes Zoster	888,647	283	204	1.43 (1.20 to 1.73)	15.85 (8.15 to 24.22)	175,693	62	77	0.82 (0.58 to 1.11)	-9.34 (-24.83 to 4.76)
Intracranial Hemorrhage	933,130	13	30	0.48 (0.20 to 0.89)	-2.88 (-5.58 to -0.51)	182,819	15	2	6.89 (1.90 to 19.16)	7.59 (2.68 to 12.64)
Lymphadenopathy	823,006	660	279	2.43	78.35	159,880	95	93	1.05	3.20

Outcome	Vaccination					SARS-CoV-2				
	N	Events in Vaccinated Group	Events in Unvaccinated Group	Risk Ratio	Risk Difference (per 100,000)	N	Events in Infected Group	Events in Uninfected Group	Risk Ratio	Risk Difference (per 100,000)
Lymphopenia	938,939	2	7	0.26 (0.00 to 1.03)	(2.05 to 2.78) (64.07 to 89.32) -0.88 (-1.96 to 0.02)	183,693	20	2	9.84 (3.06 to 26.04)	(-17.60 to 23.29) 10.35 (5.00 to 15.34)
Myocardial Infarction	892,785	59	60	1.07 (0.74 to 1.60)	0.80 (-3.32 to 5.22)	176,200	53	11	4.47 (2.47 to 9.95)	25.10 (16.22 to 33.91)
Myocarditis	938,812	21	6	3.24 (1.55 to 12.44)	2.72 (0.97 to 4.60)	183,710	19	1	18.28 (3.95 to 25.12)	10.96 (5.57 to 15.80)
Neutropenia	919,291	20	22	0.87 (0.46 to 1.66)	-0.52 (-2.77 to 1.84)	179,528	21	9	2.24 (1.03 to 5.89)	6.88 (0.22 to 13.53)
Other Thrombosis	932,469	12	22	0.46 (0.19 to 0.91)	-2.25 (-4.63 to -0.27)	182,553	45	9	4.97 (2.71 to 12.69)	22.22 (14.13 to 31.80)
Paresthesia	827,478	552	496	1.12 (0.98 to 1.24)	10.81 (-1.77 to 21.37)	161,836	164	176	0.96 (0.76 to 1.18)	-5.00 (-33.19 to 19.57)
Pericarditis	936,197	27	18	1.27 (0.68 to 2.31)	0.98 (-1.57 to 3.44)	183,158	22	4	5.39 (2.22 to 23.58)	10.94 (4.92 to 16.93)
Pulmonary Embolism	937,116	10	17	0.56 (0.21 to 1.15)	-1.50 (-3.62 to 0.36)	183,311	111	9	12.14 (6.89 to 29.20)	61.72 (48.52 to 75.37)
Seizures	913,091	36	35	0.99 (0.62 to 1.64)	-0.09 (-2.96 to 3.07)	178,402	26	17	1.38 (0.77 to 2.95)	4.39 (-3.27 to 13.02)
Syncope	858,068	326	267	1.12 (0.94 to 1.34)	6.18 (-3.22 to 15.41)	168,207	189	83	2.09 (1.65 to 2.70)	62.86 (42.02 to 83.08)
Thrombocytopenia	923,123	56	60	0.94 (0.63 to 1.27)	-0.57 (-4.63 to 2.33)	180,222	83	19	4.24 (2.57 to 7.65)	39.00 (26.49 to 51.26)
Uveitis	933,217	26	20	1.27 (0.68 to 2.67)	1.00 (-1.51 to 3.78)	182,687	7	9	0.80 (0.17 to 2.37)	-1.17 (-6.70 to 4.02)
Vertigo	773,263	433	395	1.12 (0.97 to 1.28)	9.26 (-2.53 to 19.99)	150,911	192	154	1.22 (0.98 to 1.49)	26.26 (-2.78 to 51.24)