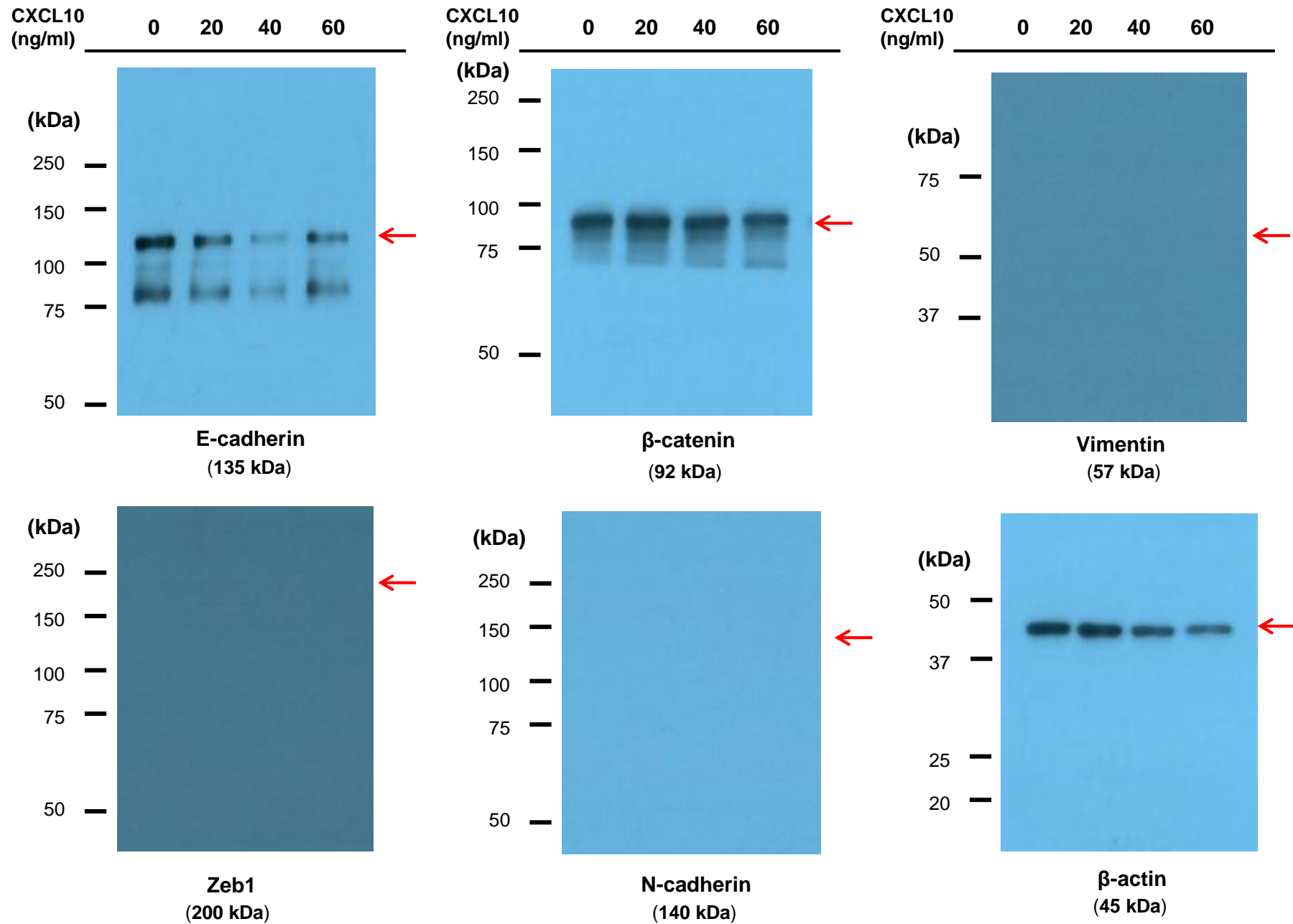


MCF-7 cells (24 hours) - Western Blot



MCF-7 cells (48 hours) - Western Blot

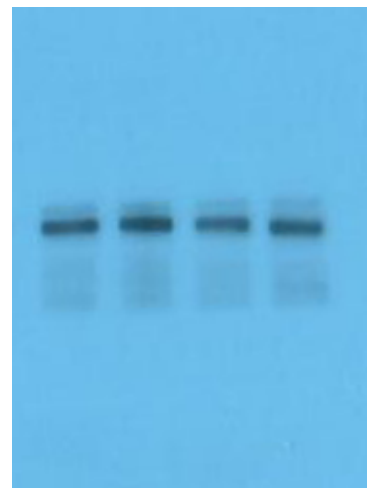
CXCL10 (ng/ml) 0 20 40 60

CXCL10 (ng/ml) 0 20 40 60

CXCL10 (ng/ml) 0 20 40 60

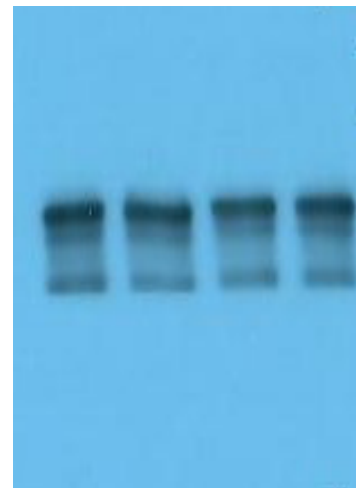
(kDa)

250 —
150 —
100 —
75 —
50 —



E-cadherin
(135 kDa)

(kDa)
250 —
150 —
100 —
75 —
50 —



β-catenin
(92 kDa)

(kDa)

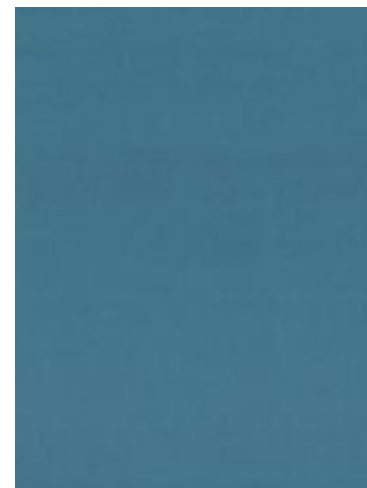
75 —
50 —
37 —



Vimentin
(57 kDa)

(kDa)

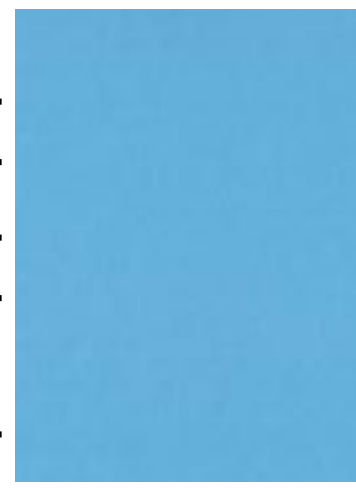
250 —
150 —
100 —
75 —
50 —



Zeb1
(200 kDa)

(kDa)

250 —
150 —
100 —
75 —
50 —



N-cadherin
(140 kDa)

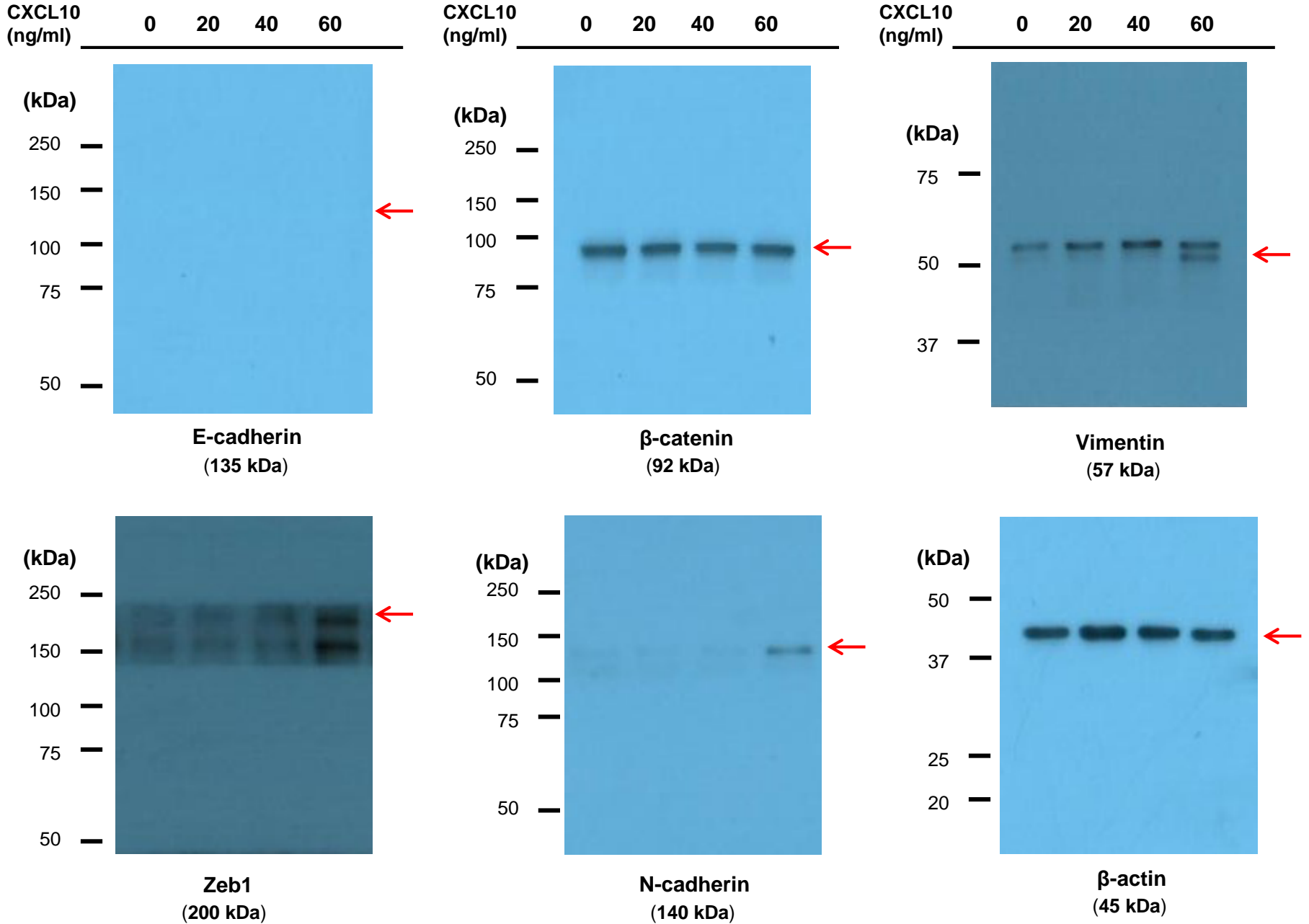
(kDa)

50 —
37 —
25 —
20 —



β-actin
(45 kDa)

MDA-MB-231 cells (24 hours) - Western Blot



MDA-MB-231 cells (48 hours) - Western Blot

