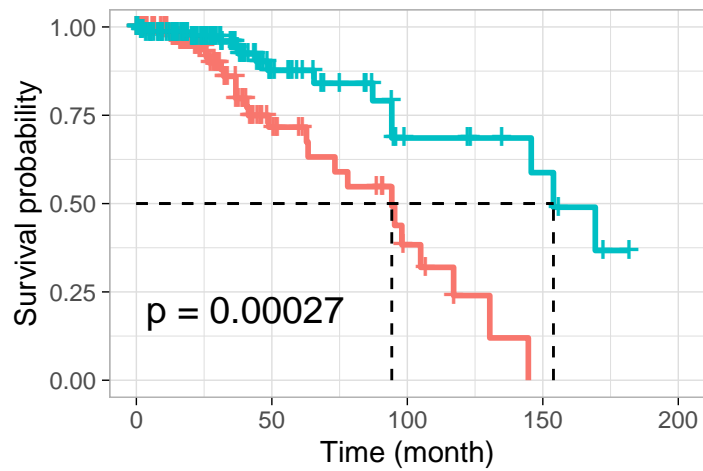
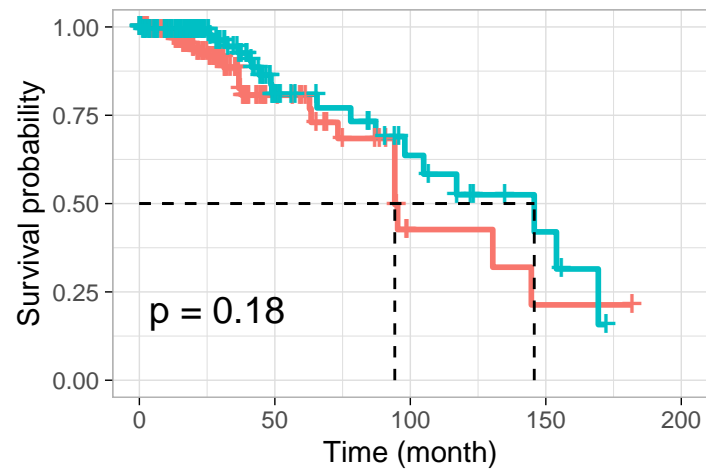


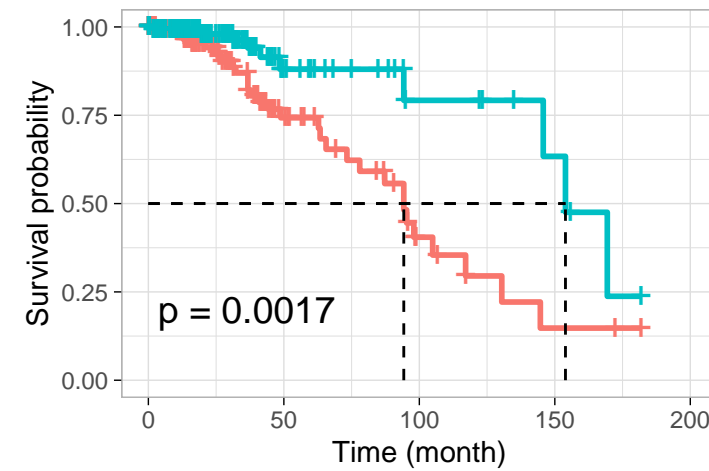
ANAX5 OS in TCGA (WHO II grade)

Strata + status=High (129) + status=Low (128)

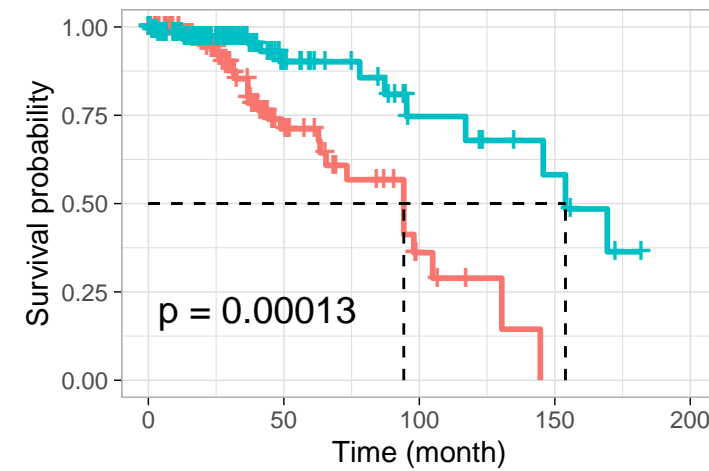
FKBP10 OS in TCGA (WHO II grade)

Strata + status=High (129) + status=Low (128)

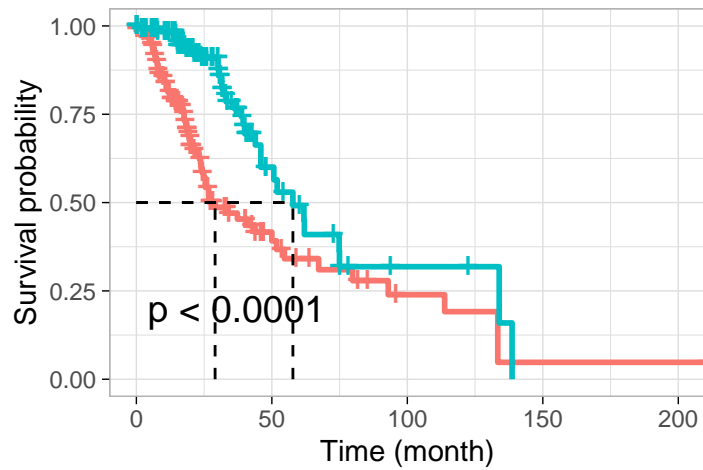
MSN OS in TCGA (WHO II grade)

Strata + status=High (129) + status=Low (128)

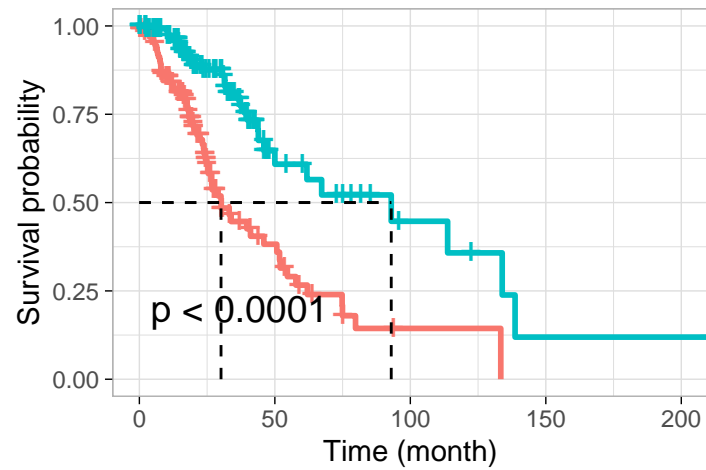
PYGL OS in TCGA (WHO II grade)

Strata + status=High (129) + status=Low (128)

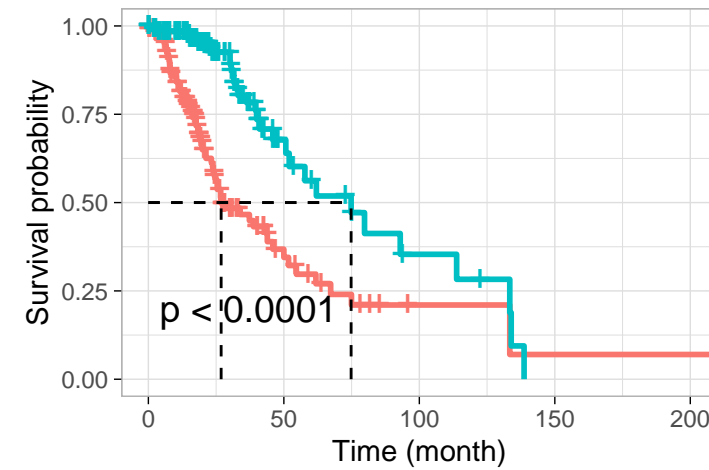
ANAX5 OS in TCGA (WHO III grade)

Strata + status=High (133) + status=Low (133)

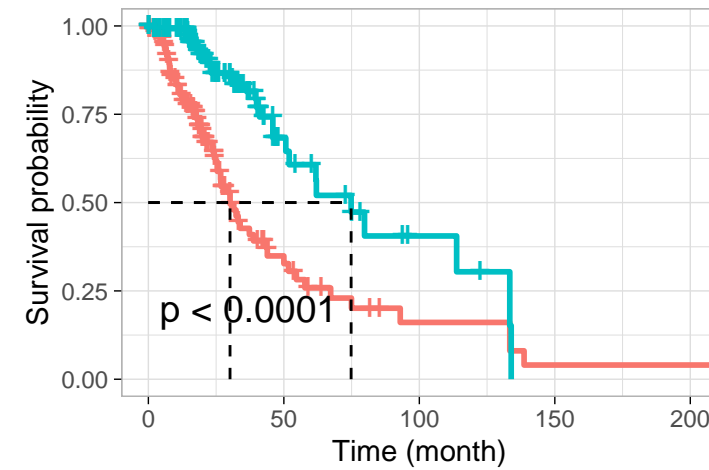
FKBP10 OS in TCGA (WHO III grade)

Strata + status=High (133) + status=Low (133)

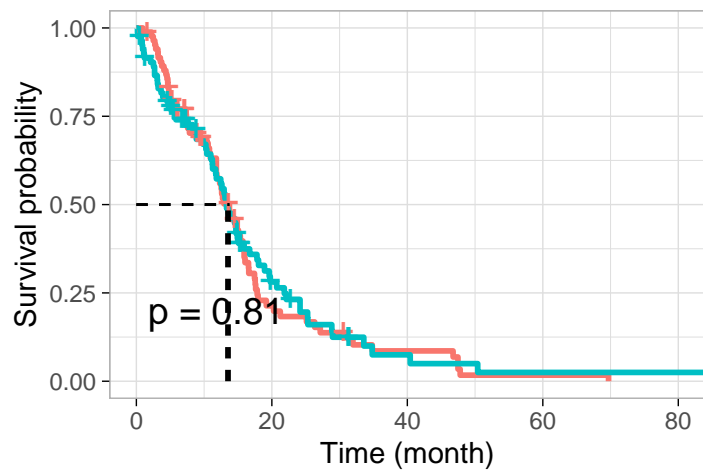
MSN OS in TCGA (WHO III grade)

Strata + status=High (133) + status=Low (133)

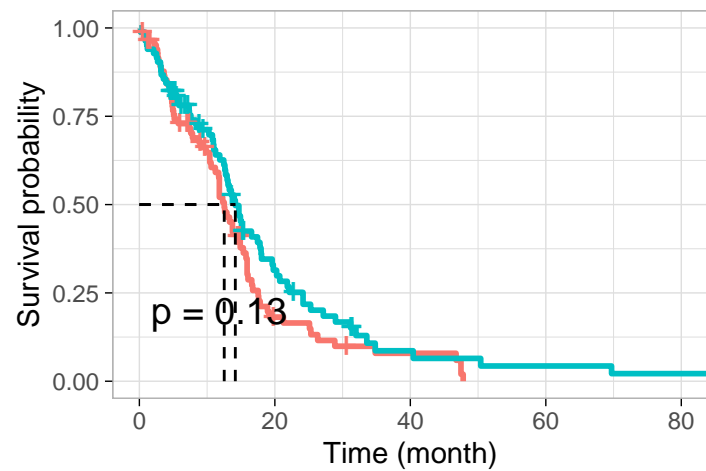
PYGL OS in TCGA (WHO III grade)

Strata + status=High (133) + status=Low (133)

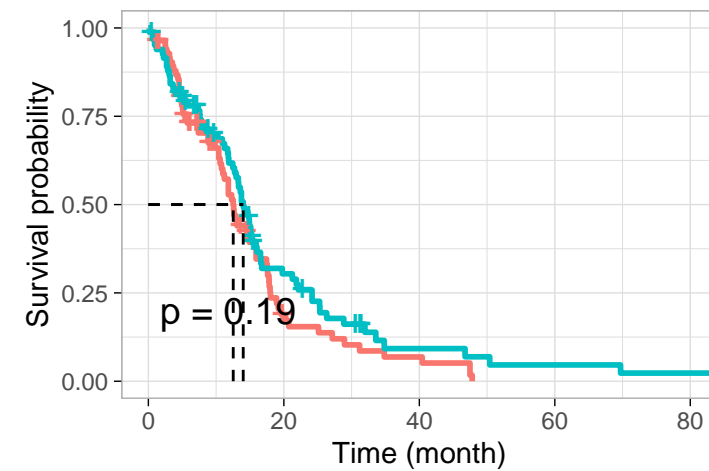
ANAX5 OS in TCGA (WHO IV grade)

Strata + status=High (84) + status=Low (83)

FKBP10 OS in TCGA (WHO IV grade)

Strata + status=High (84) + status=Low (83)

MSN OS in TCGA (WHO IV grade)

Strata + status=High (84) + status=Low (83)

PYGL OS in TCGA (WHO IV grade)

Strata + status=High (84) + status=Low (83)