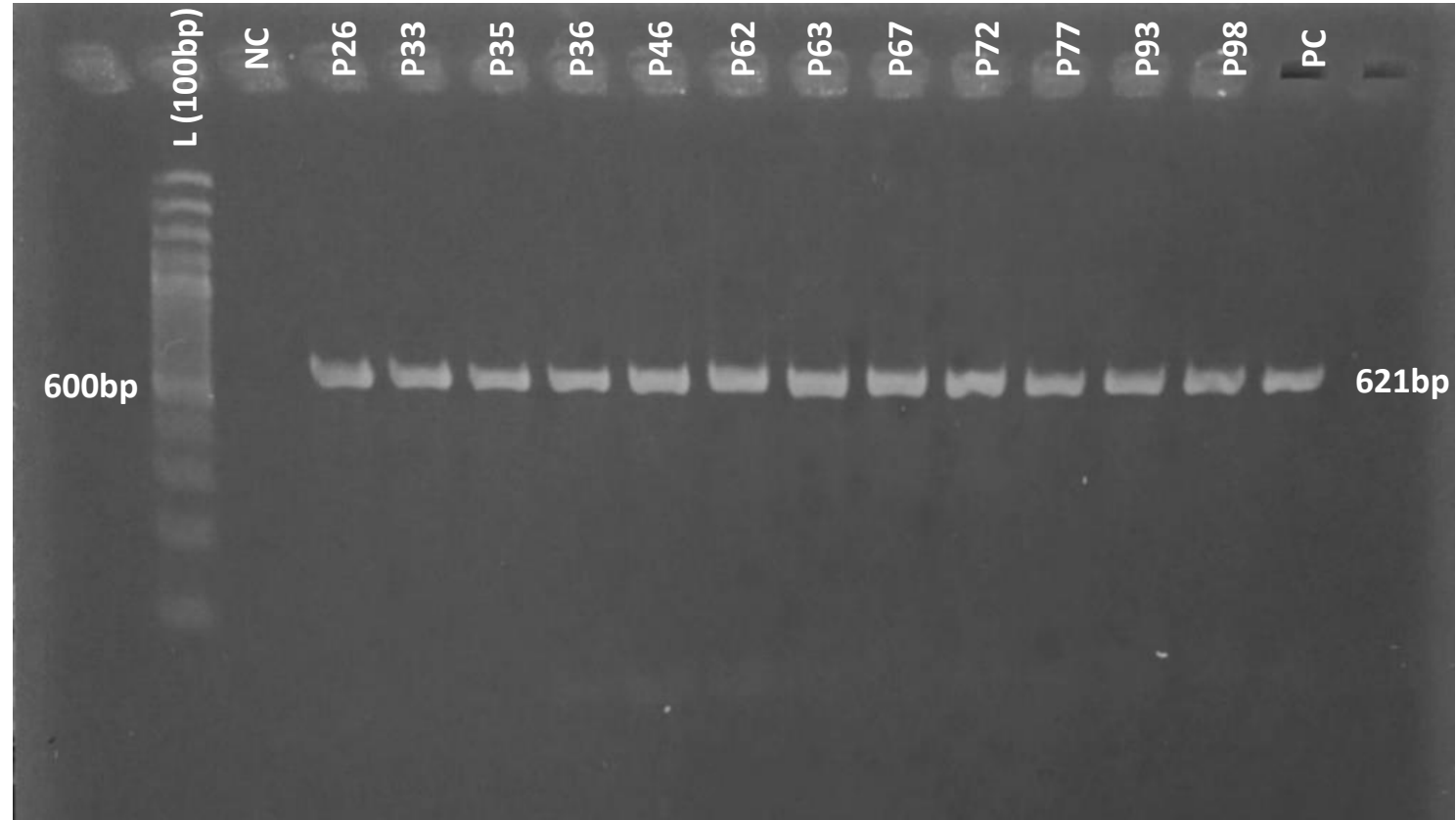
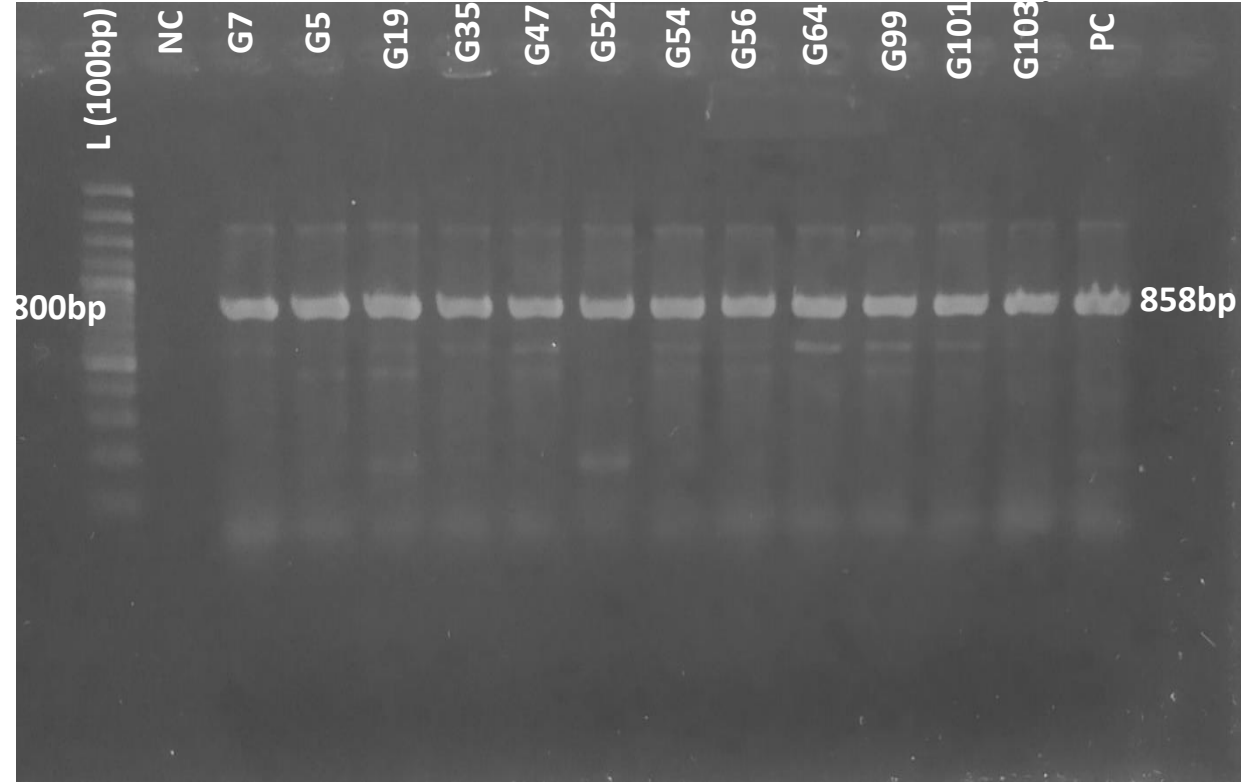


Gel images of ...  
NDM-1, SHV-11, uge (Figure 3)  
Plasmid size (Figure 6)

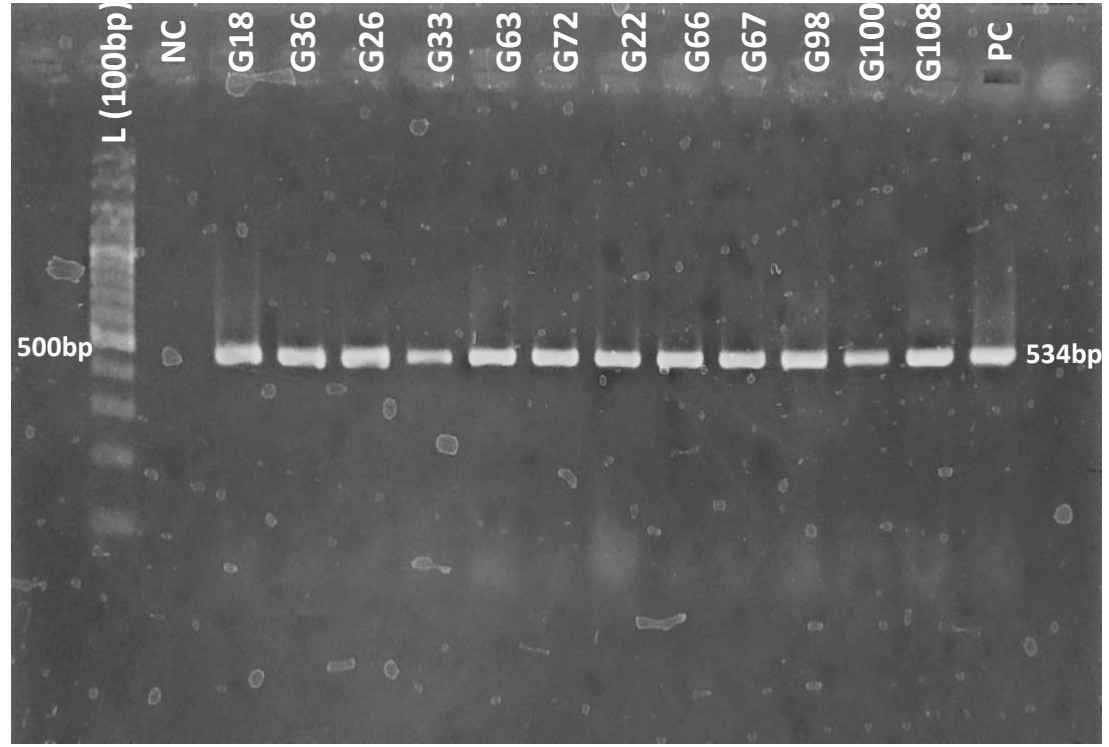
NDM-1

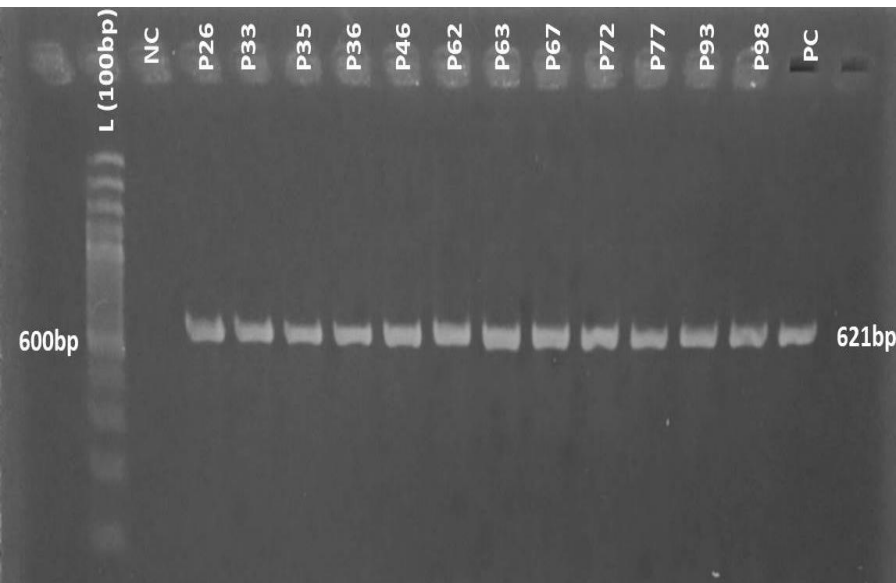


# SHV-11

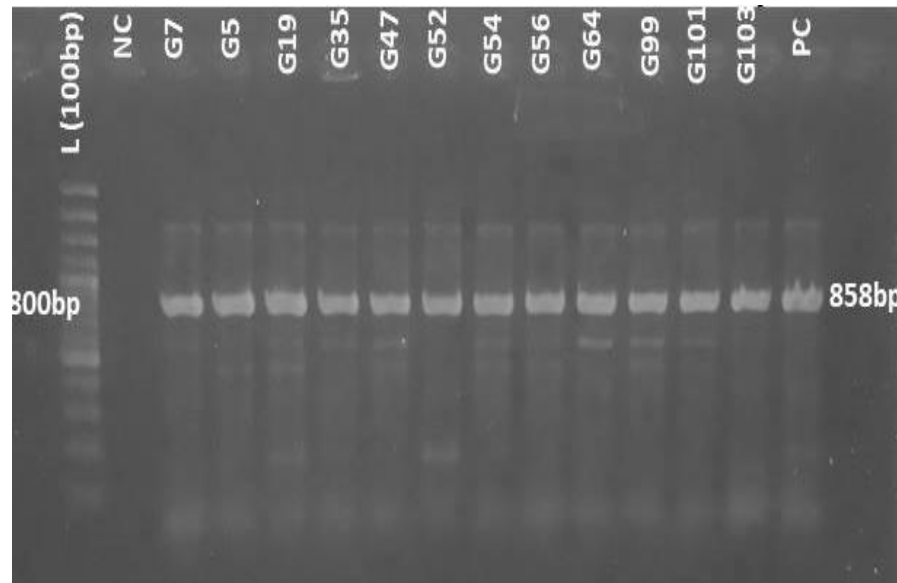


# UGE

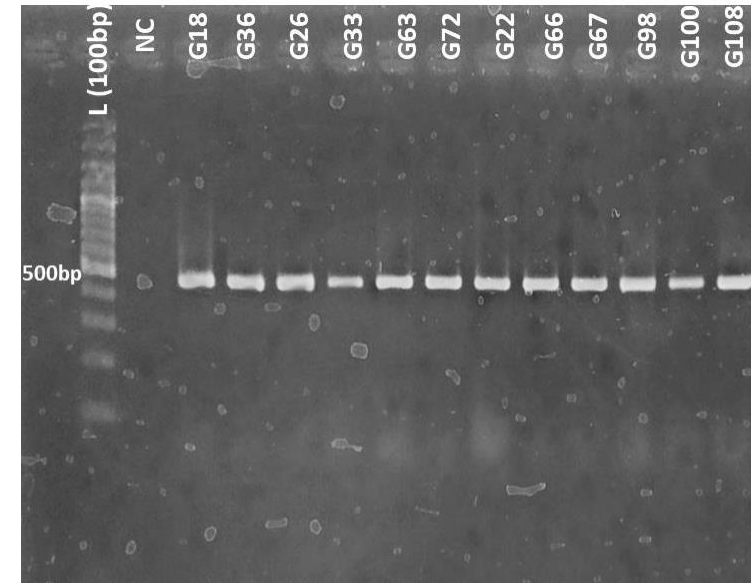




**A. *bla*<sub>NDM-1</sub>**



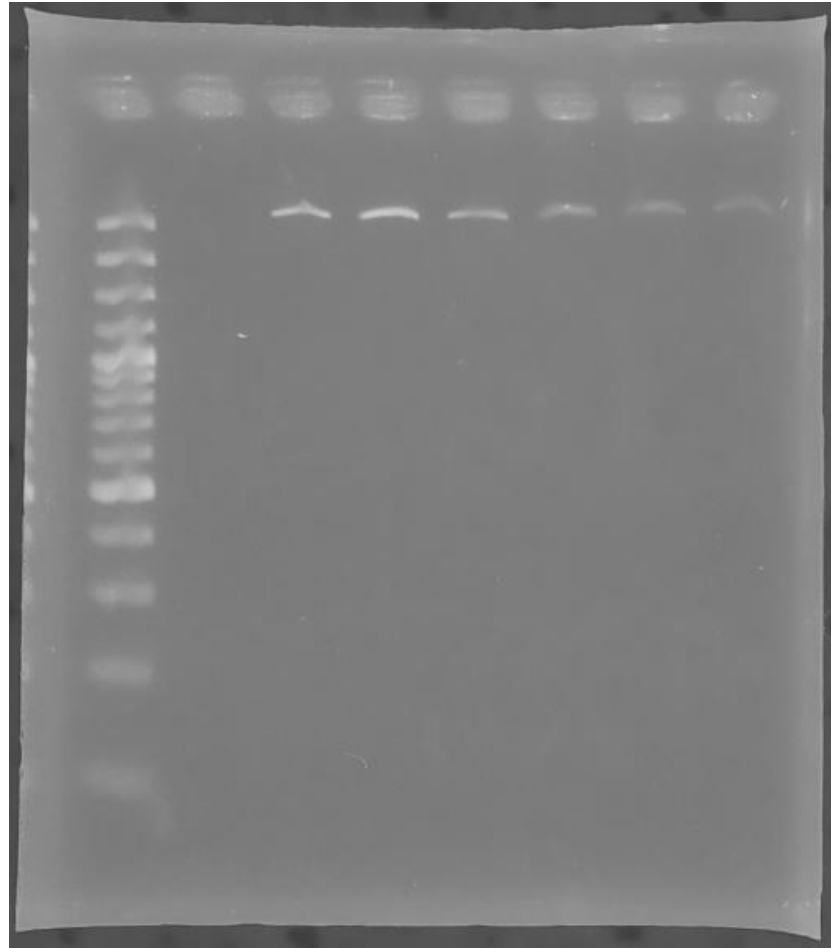
**B. *bla*<sub>SHV-11</sub>**

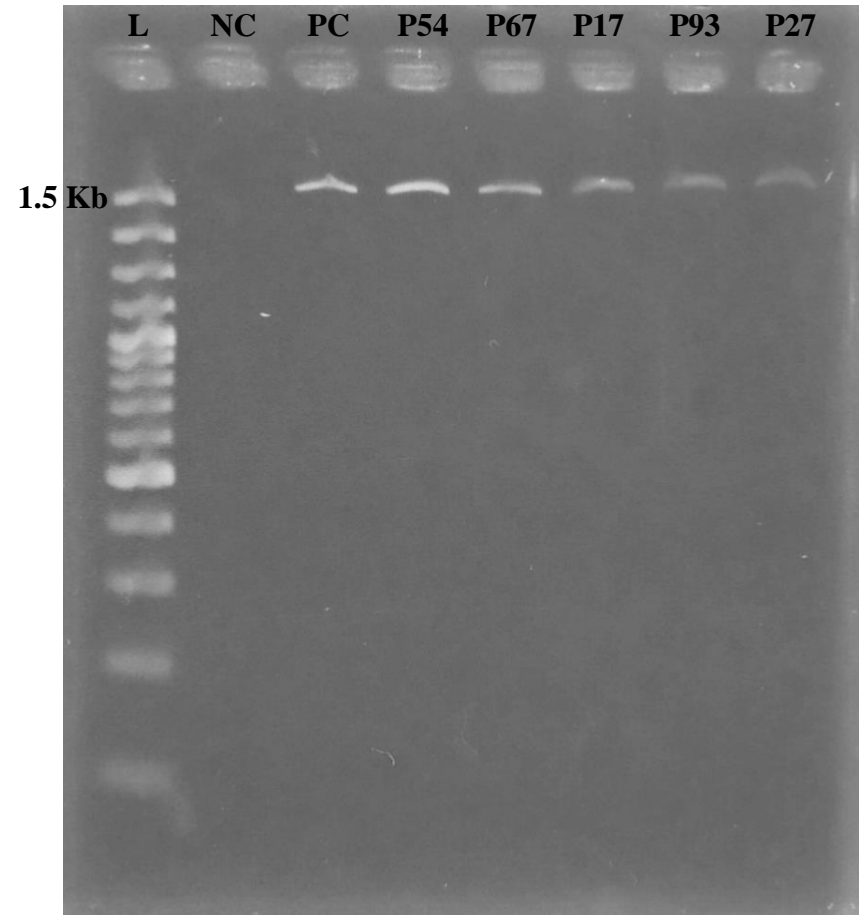


**C. *uge***

**Figure 3: Amplification and confirmation of *bla*<sub>NDM-1</sub>, *bla*<sub>SHV-11</sub>, and *uge* genes by polymerase chain reaction.** PCR products were visualized in 1.5% agarose gel using ethidium bromide staining (0.5%). L indicates Ladder (100 bp); NC as a negative control(Nuclease free water); PC indicates positive control, *K. pneumoniae* ATCC70603. (A) samples representing bands with 621bp were *bla*<sub>NDM-1</sub> positive amplicons similarly, (B) samples were *bla*<sub>SHV-11</sub> positive amplicons with 858bp, (C) samples were *uge* positive amplicons having 534bp.

# Plasmid profiling (Figure 6)





**Figure 6: Detection of plasmid by Agarose gel electrophoresis.**