

OMTO, Volume 22

Supplemental information

**CXCR5 guides migration and tumor eradication
of anti-EGFR chimeric antigen receptor T cells**

Guangchao Li, Jintao Guo, Yanfang Zheng, Wen Ding, Zheping Han, Lingyu Qin, Wenjun Mo, and Min Luo

Supplementary Figure 1

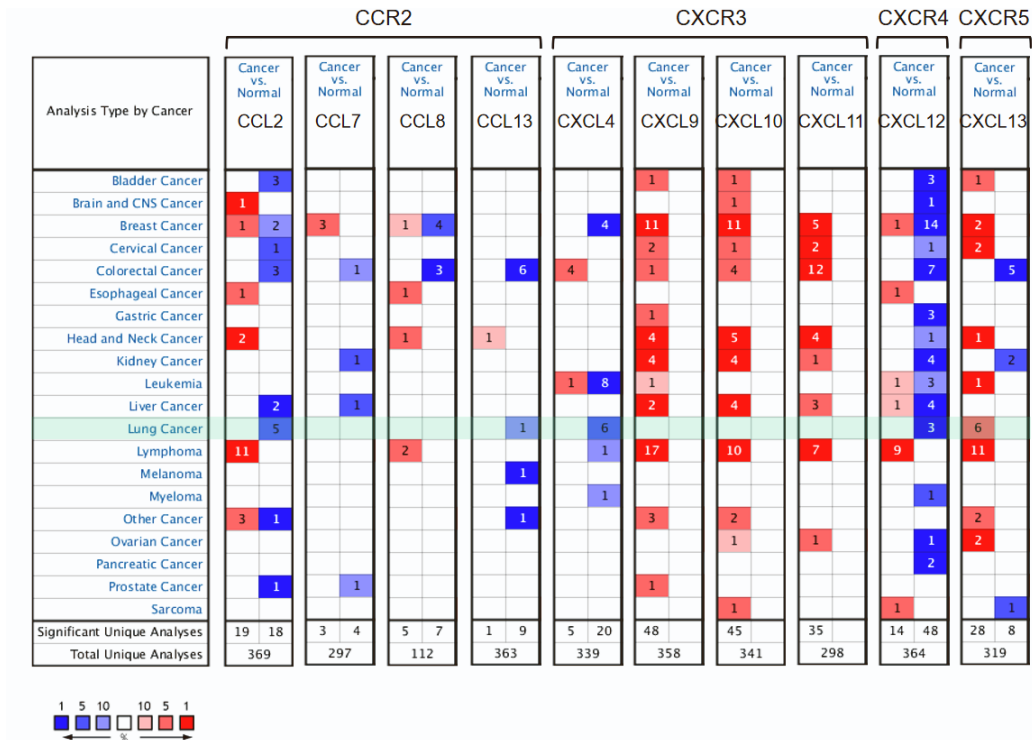


Figure S1. The expressions of multiple chemokines in the normal and lung cancer.

The mRNA expression levels of chemokines in various cancers were analyzed using the online Oncomine database (Threshold for FC>2, p<0.05, and rank=top10).

Supplementary Figure 2

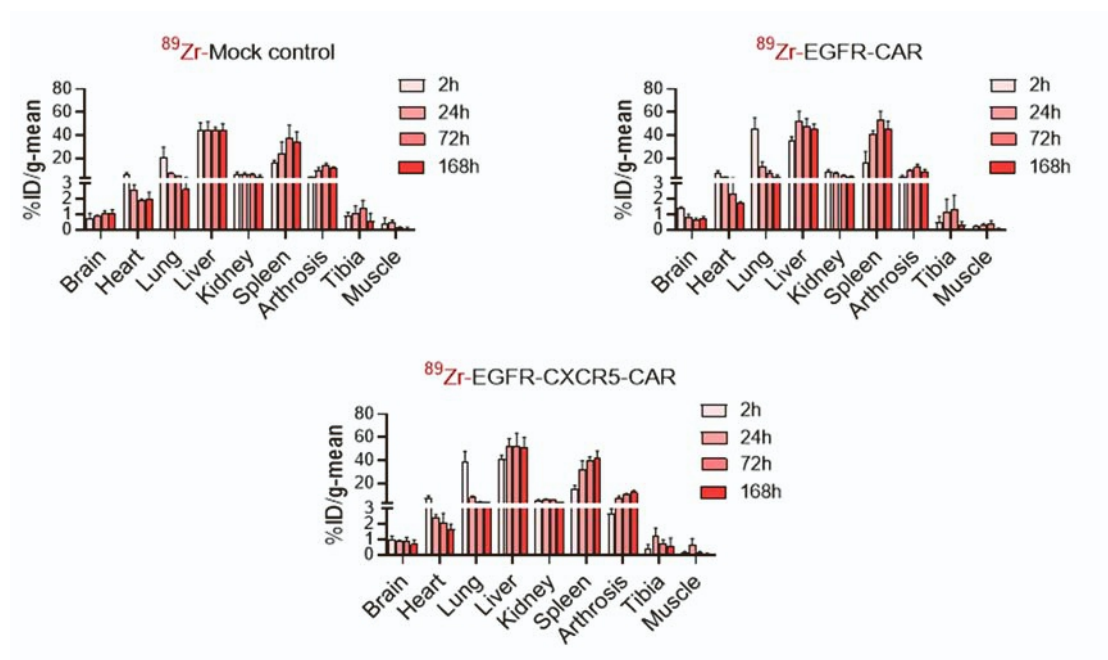


Figure S2. Micro PET/CT analysis of the ⁸⁹Zr-Oxine labeled CAR-T cells tracking in vivo.

After a single intravenous injection of ⁸⁹Zr-CAR-T cells in tumor-bearing mice, a small animal PET/CT scan was performed to delineate the regions of interest and obtain the radiation uptake values to study the tissue distribution characteristics of CAR-T cells. Radio-isotopes were imaged on tumor bearing mice over 7 days (n=3).