

Figure S1 Flow diagram on this prospective study.

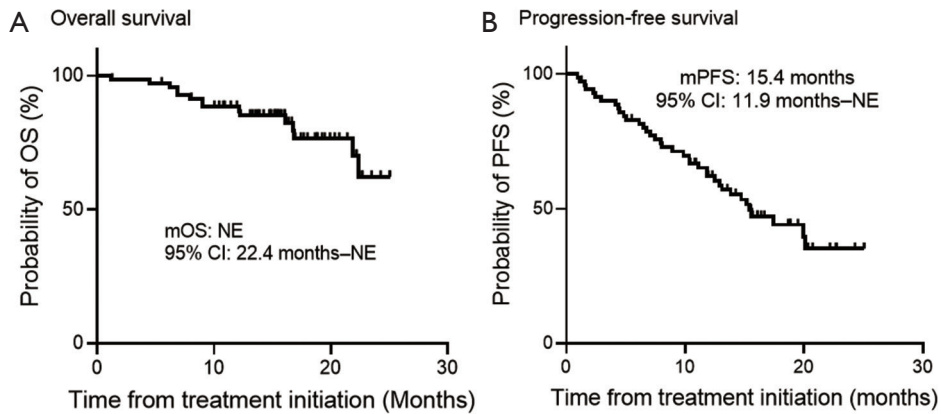


Figure S2 Kaplan-Meier curves for OS and PFS of EGFR mutated non-small cell lung cancer patients who received osimertinib monotherapy. (A) OS in all patients (n=71); (B) PFS in all patients (n=71). OS, overall survival; PFS, progression-free survival; EGFR, epidermal growth factor receptor; CI, confidence interval; NE, not evaluable.

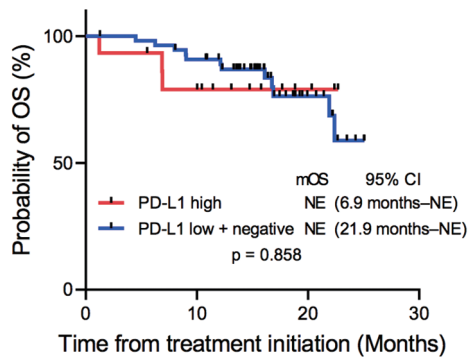


Figure S3 Kaplan-Meier curves for OS of *EGFR*-mutated non-small cell lung cancer patients who received osimertinib monotherapy between tumor PD-L1 high group and tumor PD-L1 low plus negative group. OS, overall survival; *EGFR*, epidermal growth factor receptor; PD-L1, programmed death-ligand 1; CI, confidence interval; NE, not evaluable.

Table S1 Response to osimertinib for patients with untreated advanced *EGFR*-mutated non-small cell lung cancer

Characteristics	n=71
CR	2 (2.8)
PR	47 (66.2)
SD	14 (19.7)
PD	5 (7.0)
NE	3 (4.2)
ORR (95% CI)	72.1% (59.9–82.3%)
DCR (95% CI)	92.6% (83.7–97.6%)

CR, complete response; PR, partial response; SD, stable disease; PD, progressive disease; NE, not evaluable; ORR, objective response rate; CI, confidence interval; DCR, disease control rate.

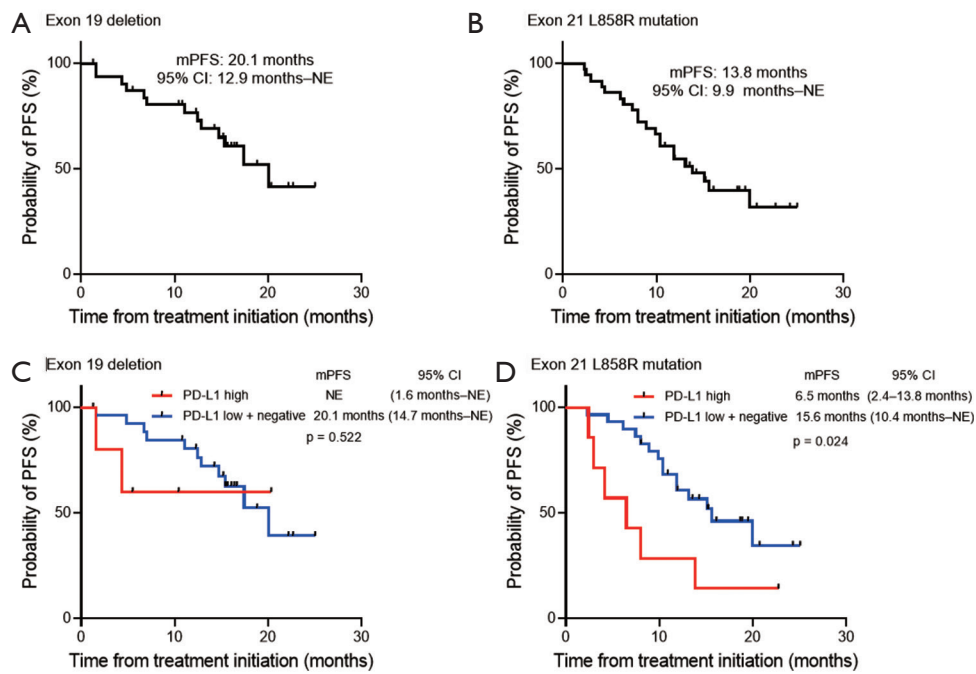


Figure S4 Kaplan-Meier curves for PFS of *EGFR*-mutated non-small cell lung cancer patients who received osimertinib monotherapy. (A) PFS in patients harboring exon 19 deletion (n=32); (B) PFS in patients harboring exon 21 L858R mutation (n=36); (C) comparison of PFS between tumor PD-L1 high group and tumor PD-L1 low plus negative group in patients harboring exon 19 deletion; (D) comparison of PFS between tumor PD-L1 high group and tumor PD-L1 low plus negative group in patients harboring exon 21 L858R mutation. PFS, progression-free survival; *EGFR*, epidermal growth factor receptor; PD-L1, programmed death-ligand 1; CI, confidence interval; NE, not evaluable.