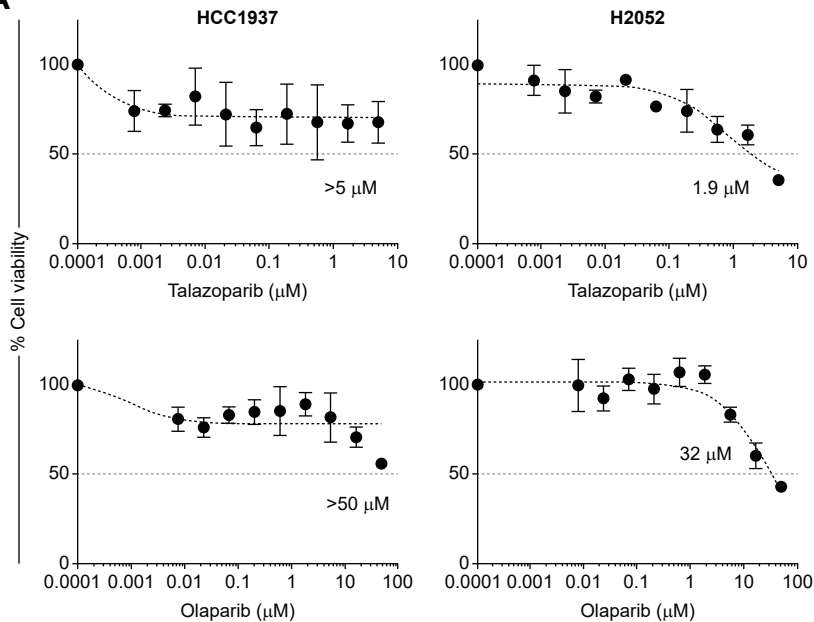


Figure S2

A



B

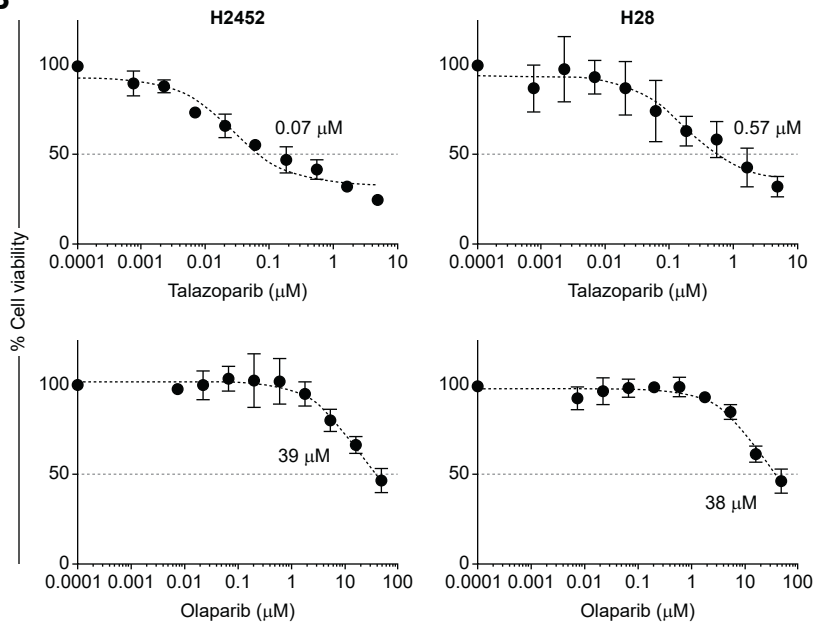


Figure S3

BAP1 status and sensitivity

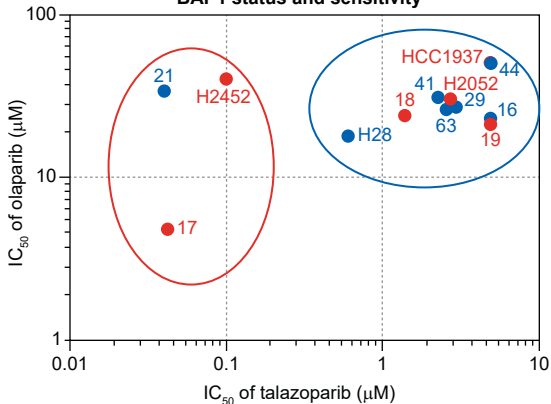
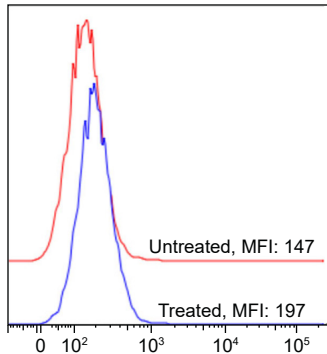
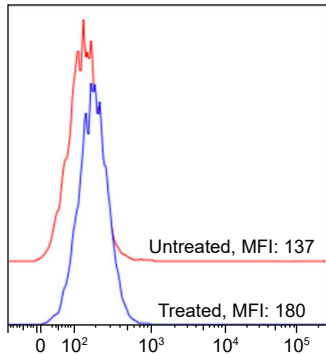


Figure S4

NCI-Meso19, resisant cell line



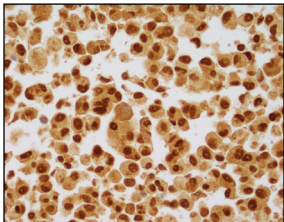
NCI-Meso21, sensitive cell line



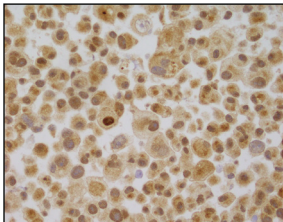
pH2AX →

Figure S5

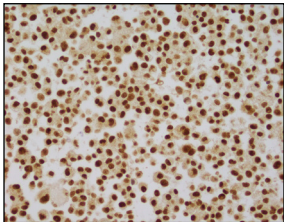
H2052



H2052 BAP1 KO



NCI-Meso19



NCI-Meso19 BAP1 KO

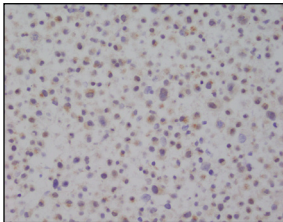


Figure S6

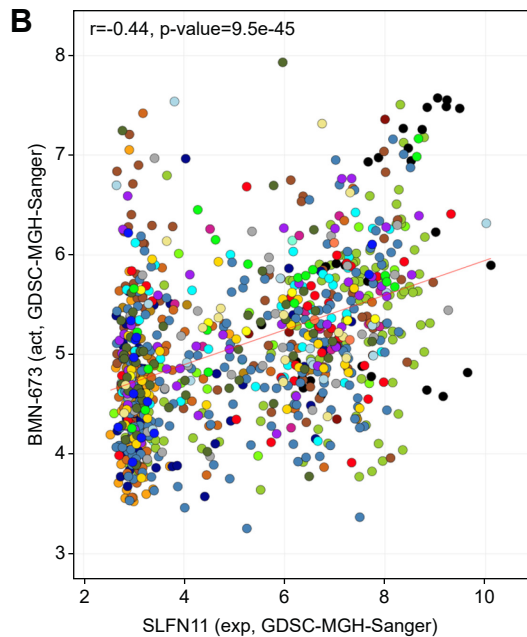
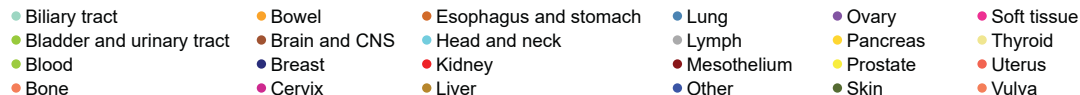
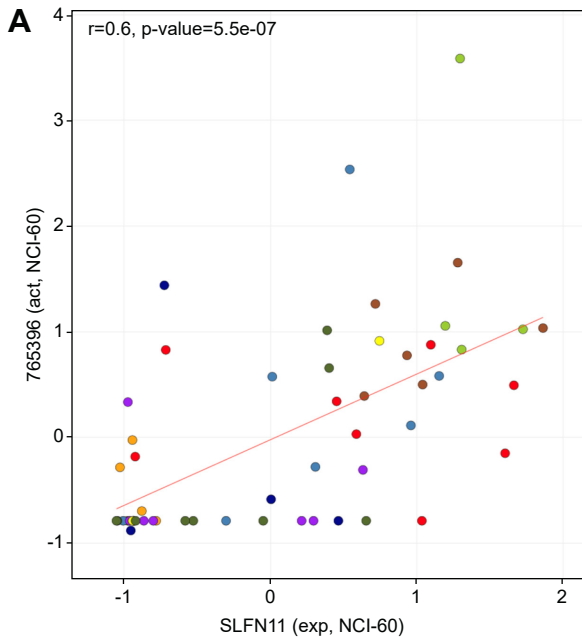


Figure S7

NCI-Meso17

	Talazoparib (μM)		
TMZ (μM)	0.1	1	10
31.2	0.14	0.48	1.01
62.5	0.15	0.42	0.53
125	0.24	0.40	0.71
250	0.39	0.49	0.04

NCI-Meso21

	Talazoparib (μM)		
TMZ (μM)	0.1	1	10
31.2	0.06	0.09	0.60
62.5	0.10	0.10	0.43
125	0.17	0.18	0.48
250	0.30	0.33	0.46

NCI-Meso29

	Talazoparib (μM)		
TMZ (μM)	0.1	1	10
31.2	1.76	0.33	0.64
62.5	0.23	0.43	0.80
125	0.16	0.09	1.86
250	0.17	0.12	0.69

NCI-Meso16

	Talazoparib (μM)		
TMZ (μM)	0.1	1	10
31.2	0.79	1.71	1.67
62.5	0.64	2.14	1.79
125	0.54	1.56	1.27
250	0.69	1.47	1.74

NCI-Meso19

	Talazoparib (μM)		
TMZ (μM)	0.1	1	10
31.2	0.23	0.42	0.87
62.5	0.08	0.21	0.56
125	0.04	0.09	0.32
250	0.05	0.10	0.33

NCI-Meso63

	Talazoparib (μM)		
TMZ (μM)	0.1	1	10
31.2	6.96	0.44	0.35
62.5	0.74	0.49	0.41
125	0.32	0.28	0.27
250	0.34	0.33	0.32

Very strong synergism, CI<0.1

Strong synergism, CI=0.1-0.3

Synergism, CI=0.3-0.7

Figure S8

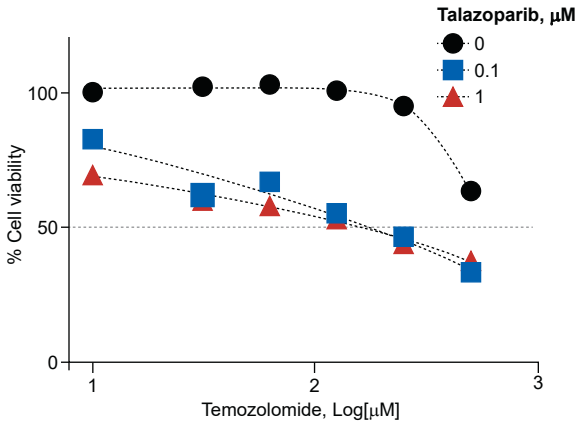


Figure S9

