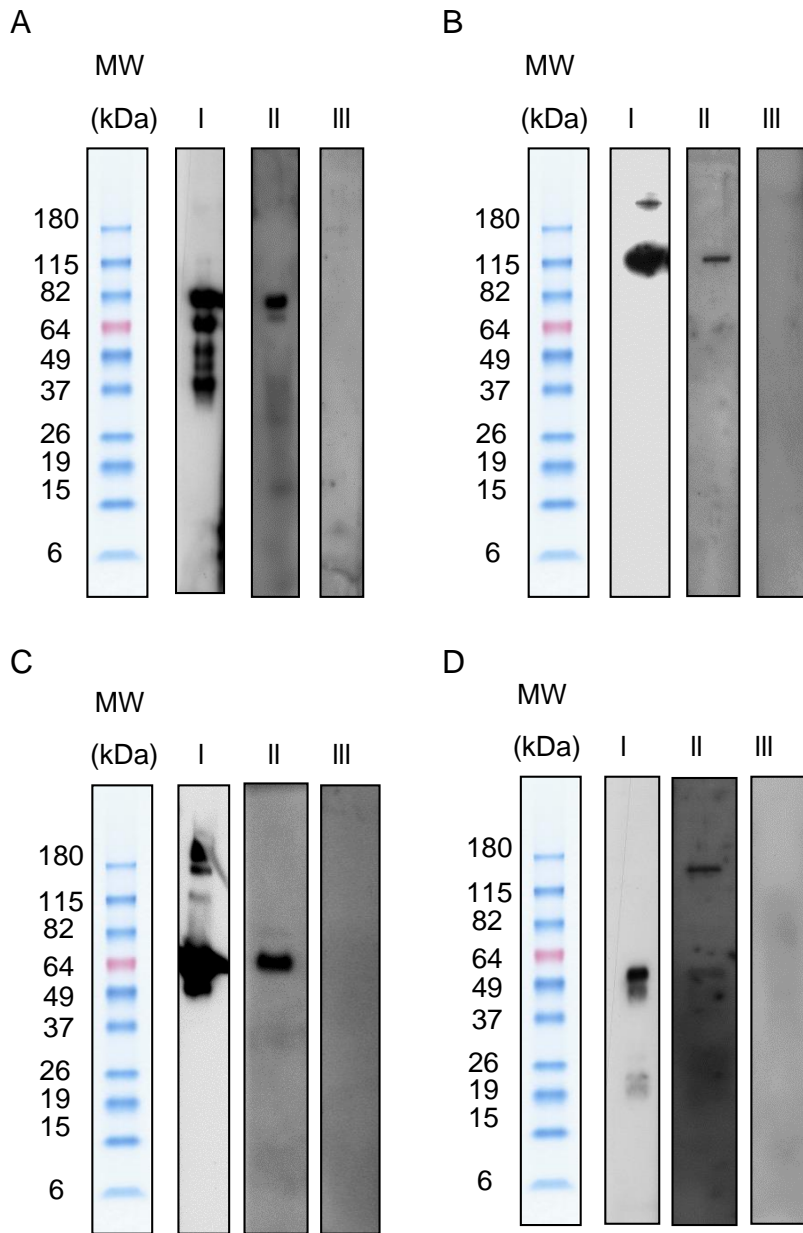


SUPPLEMENTAL TABLES AND FIGURES

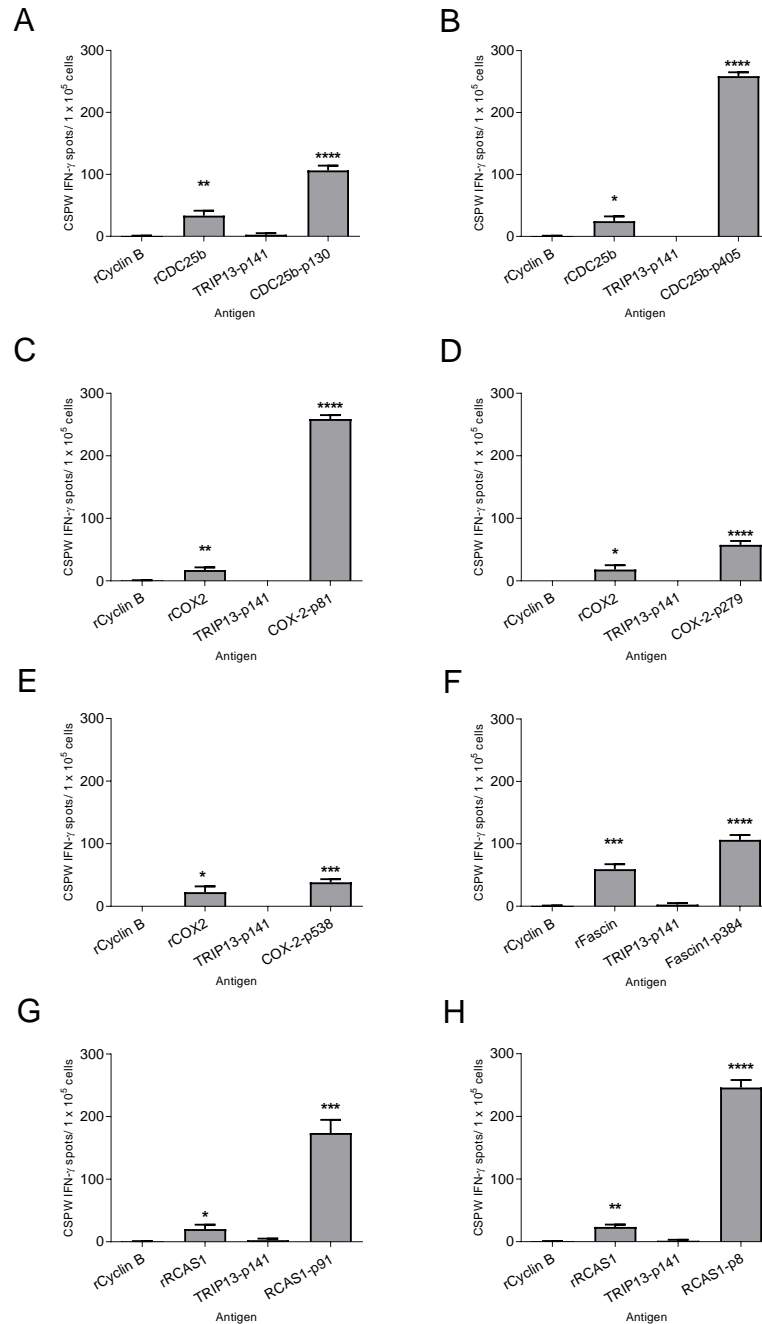
Supplemental Table 1. Predicted MHC Class II binding epitopes

Protein	number	# aa	sequence	% Homology of peptide with mouse
CDC25B	p130-150	21	qaiqaasriirneqfairrfq	78%
	p405-427	23	vdgkhqdlkyispetmvaltqk	100%
COX2	p81-96	16	fkqfwnvvnnpflrn	87%
	p279-295	17	glvpglmmyatiwlreh	100%
	p538-553	16	gevgfiintasiqslc	94%
FASCIN1	p374-p398	25	elflmklinrpiiivfrgehfigcr	100%
	p136-p154	19	iamhpqvnivsvtrkryah	100%
	p21-p40	20	nkyltaeafgkvnasassl	100%
	p190-p209	20	tadhfrlrhdqrlvarpepa	95%
RCAS1	p8-p27	20	lfkfctclatvsvflkrlic	95%
	p91-p110	20	epdyfkdmtpirtktkivi	100%
	p126-148	23	gfssrlaatqdlpfihqsselgd	96%
	p161-181	21	eedaawqaeevlrqkladr	95%

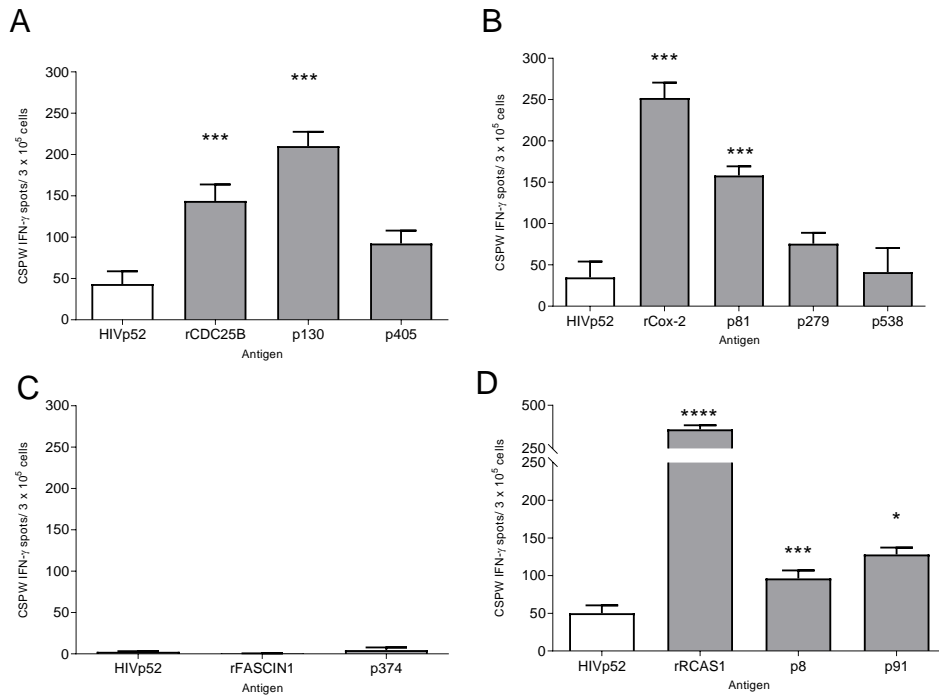
Orange highlighted epitopes were validated as responding to protein.



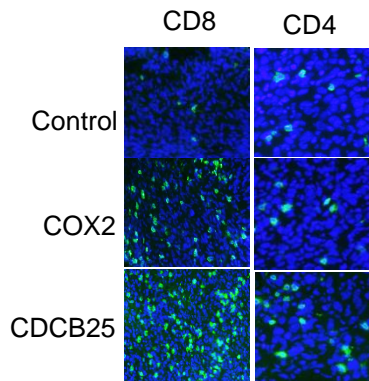
Supplemental Figure 1. Example Western blot validation of IgG antibody response to colorectal cancer antigens. (A) CDC25B; 62kD (B) COX2; 115kD (C) FASCIN1; 60 kD and (D) RCAS1; 50kD. (I) polyclonal antibody specific for the antigen, (II) a representative ELISA positive patient sample, (III) an ELISA negative subject sample. Molecular weight protein marker (far left).



Supplemental Figure 2. Epitope-specific Th1 response to naturally processed protein. IFN- γ ELISPOT cSPW (corrected spots per well) for (A) CDC25B-p130-specific T-cells, (B) CDC25B-p405-specific T-cells, (C) COX2-p81-specific T-cells, (D) COX2-p279-specific T-cells, (E) COX2-p538-specific T-cells, (F) Fascin-p384 specific T-cells, (G) RCAS1-p91-specific T-cells and (H) RCAS1-p8-specific T-cells stimulated with the expansion peptide or corresponding recombinant protein. TRIP13-p141 and recombinant Cyclin B are used as negative peptide and protein controls, respectively; **** $p < 0.0001$, *** $p < 0.001$, ** $p < 0.01$, * $p < 0.05$.



Supplemental Figure 3. CDC25B, COX2, RCAS1, but not FASCIN1 peptides and protein elicit an Th1 response in mice. Mean (\pm SEM) IFN- γ corrected spots per well (CSPW) when splenocytes were stimulated with the indicated antigen after vaccination with peptides derived from (A) CDC25B, (B) COX2 (C) FASCIN1, and (D) RCAS1. * $p < 0.05$, *** $p < 0.001$, **** $p < 0.0001$ as compared to the negative control HIVp52 peptide.



Supplemental Figure 4. Representative immunohistochemistry for CD8 and CD4 on tumors collected from the colon after immunization with the indicated vaccine. Positive T-cells are stained green and all cells are stained blue.