

Supplementary Online Content

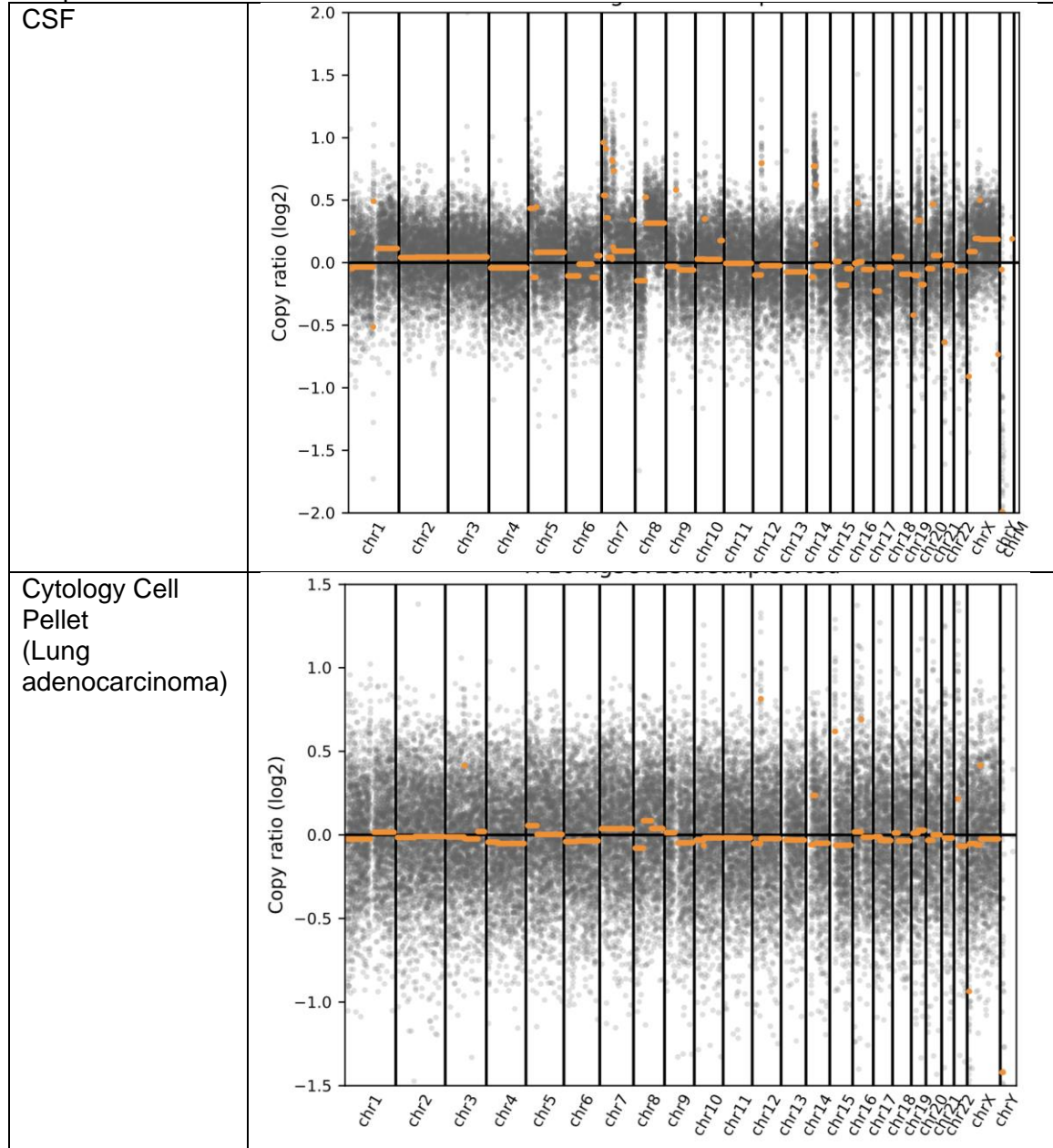
Gu W, Rauschecker AM, Hsu E, et al. Detection of neoplasms by metagenomic next-generation sequencing of cerebrospinal fluid. *JAMA Neurol*. Published online September 13, 2021. doi:10.1001/jamaneurol.2021.3088

eTable. Study 1 Samples: Correlated Body Fluid and Cancer Tissue Copy Ratio Plots

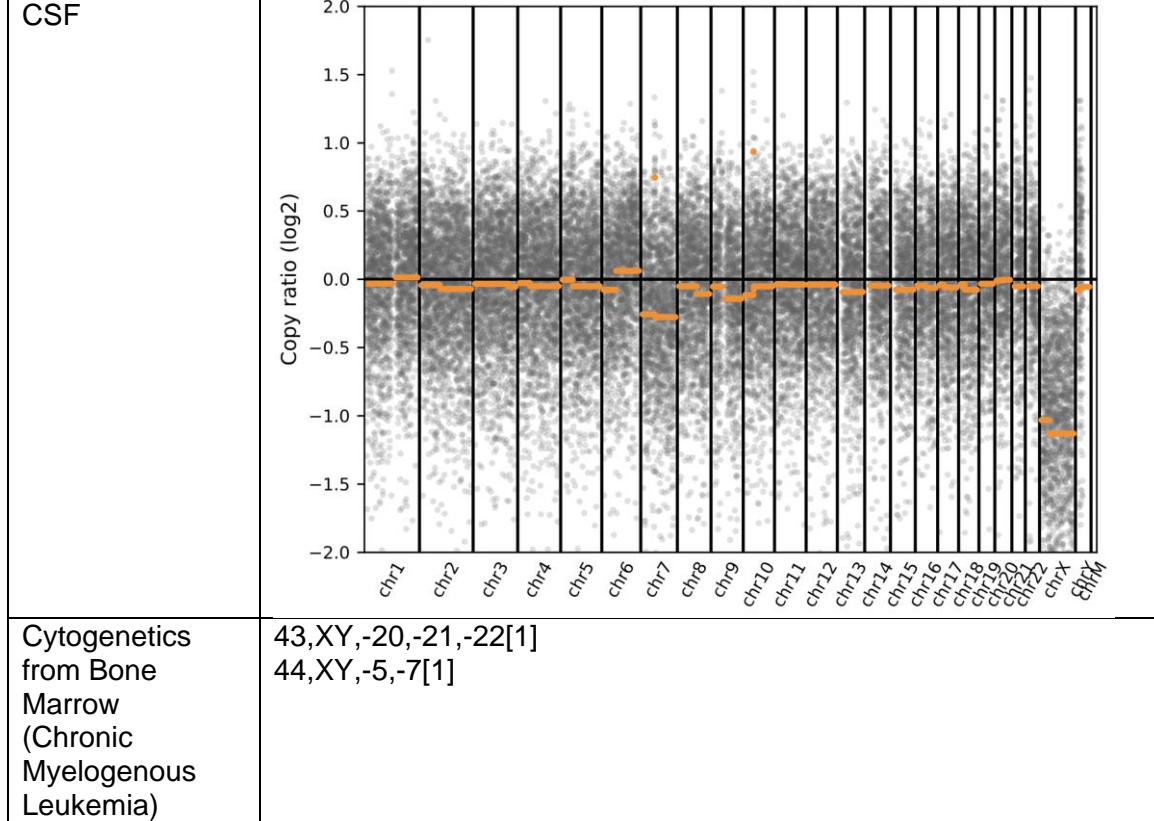
This supplementary material has been provided by the authors to give readers additional information about their work.

eTable. Study 1 Samples: Correlated Body Fluid and Cancer Tissue Copy Ratio Plots

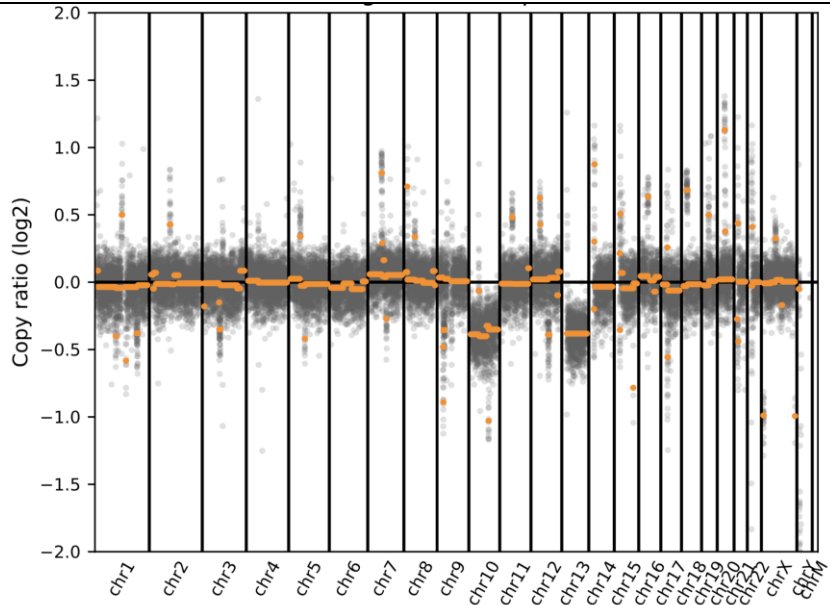
Sample 1



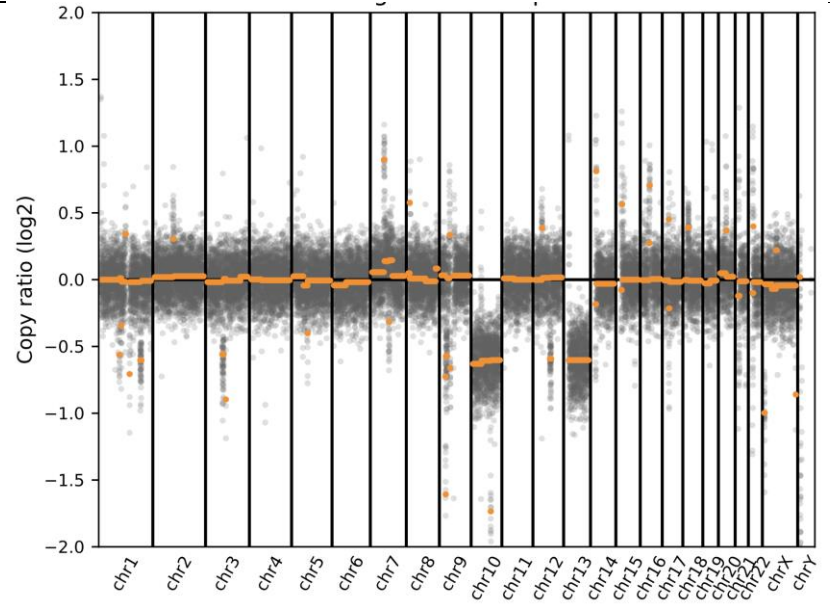
Sample 21



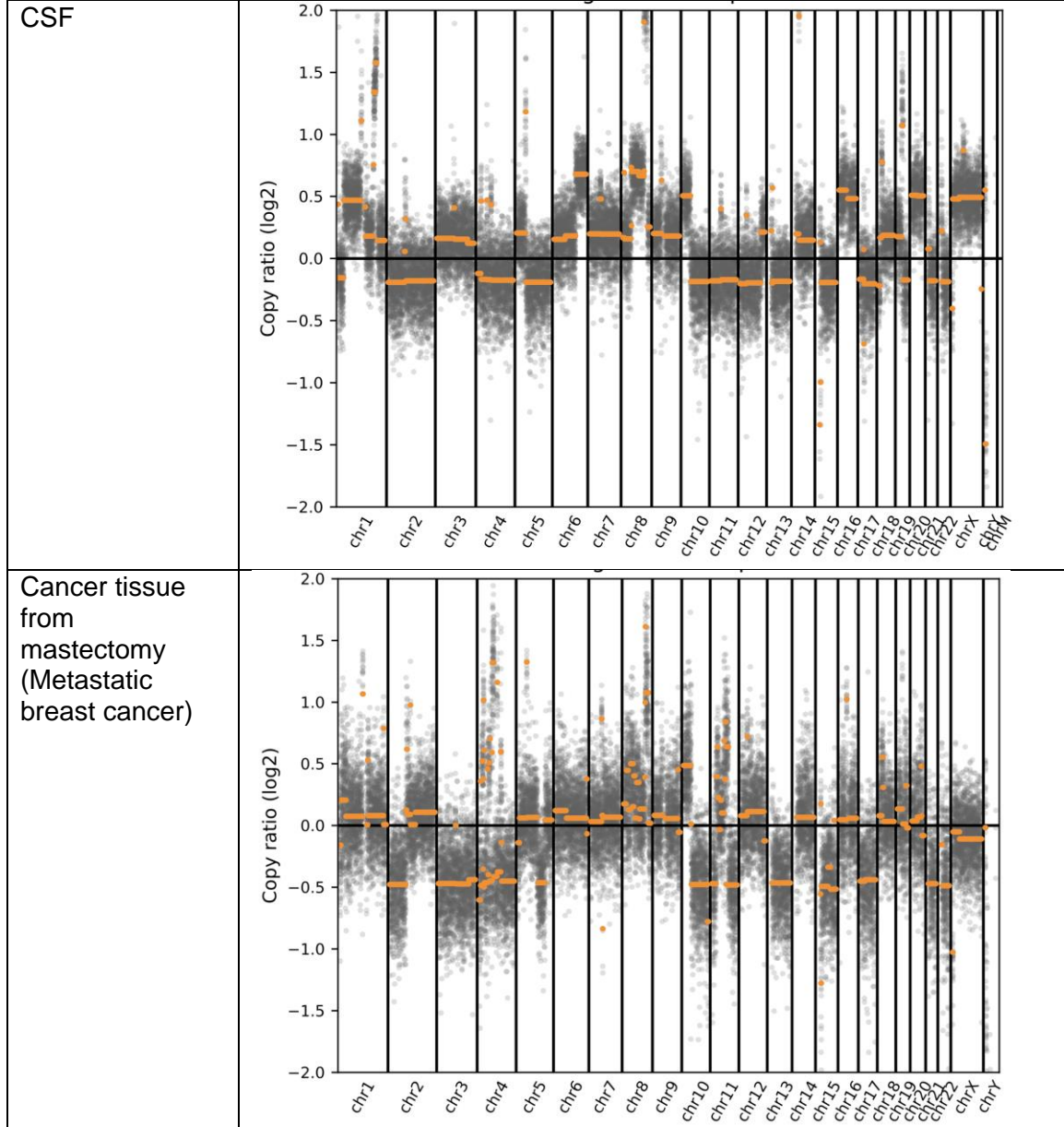
Sample 32
CSF



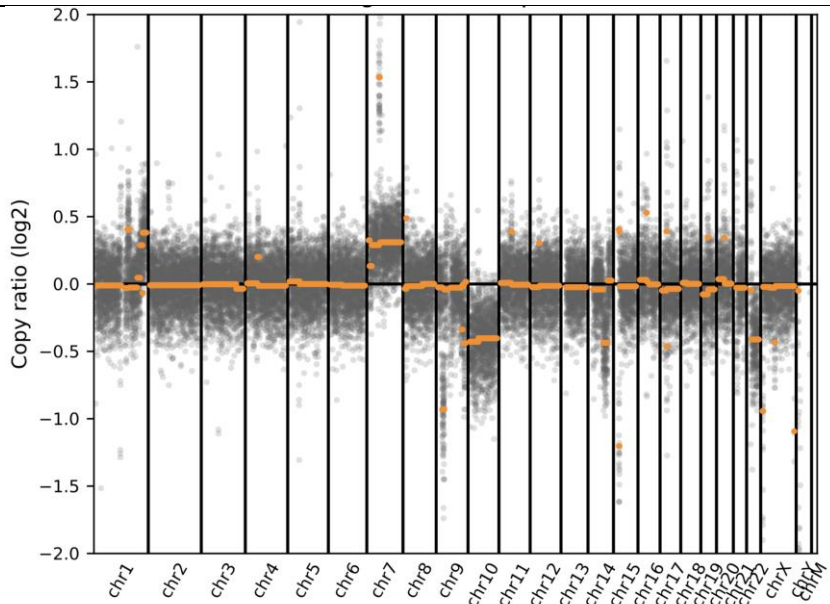
Cancer tissue from
Brain biopsy
(Glioblastoma,
grade IV)



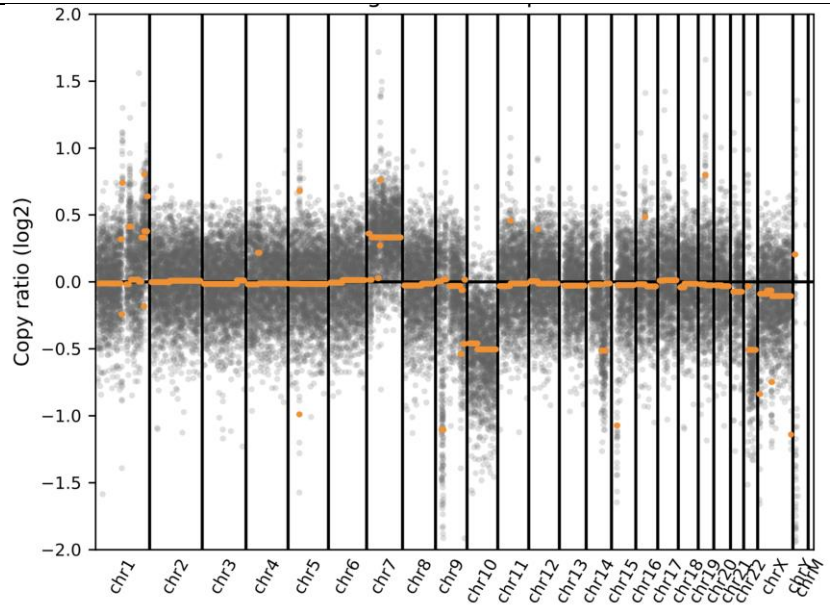
Sample 34



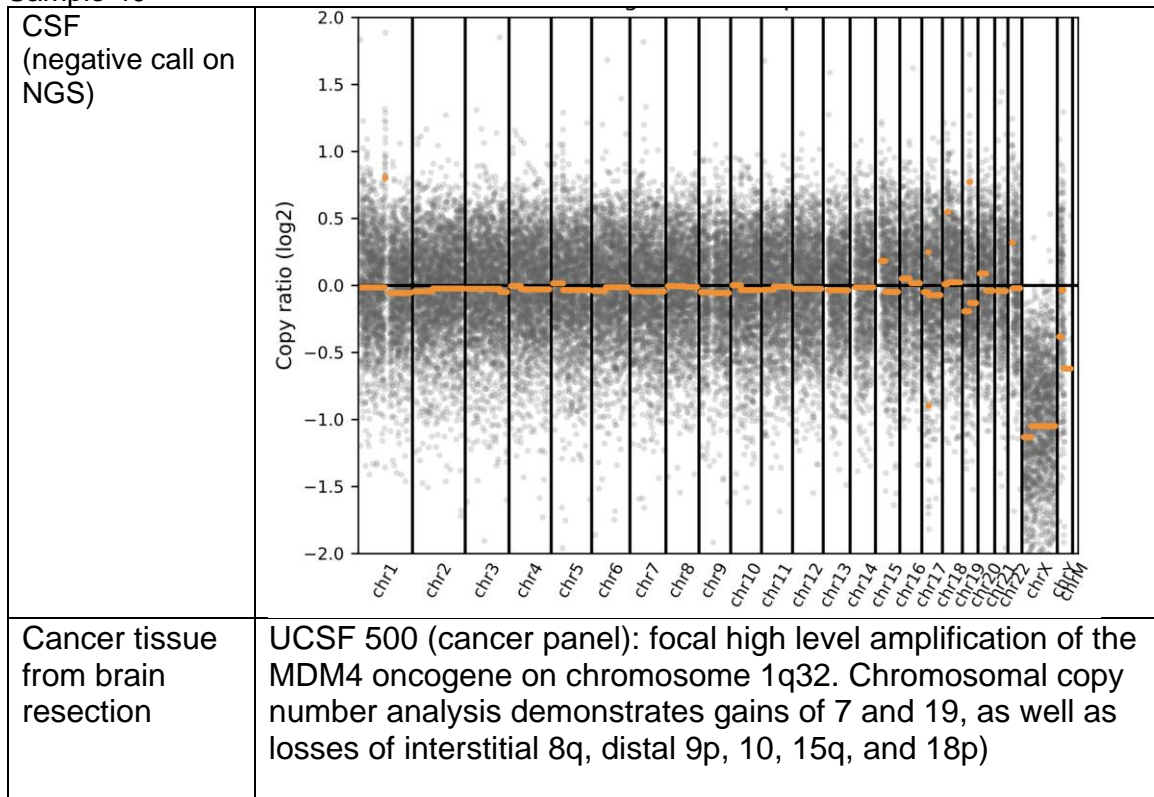
Sample 36
CSF



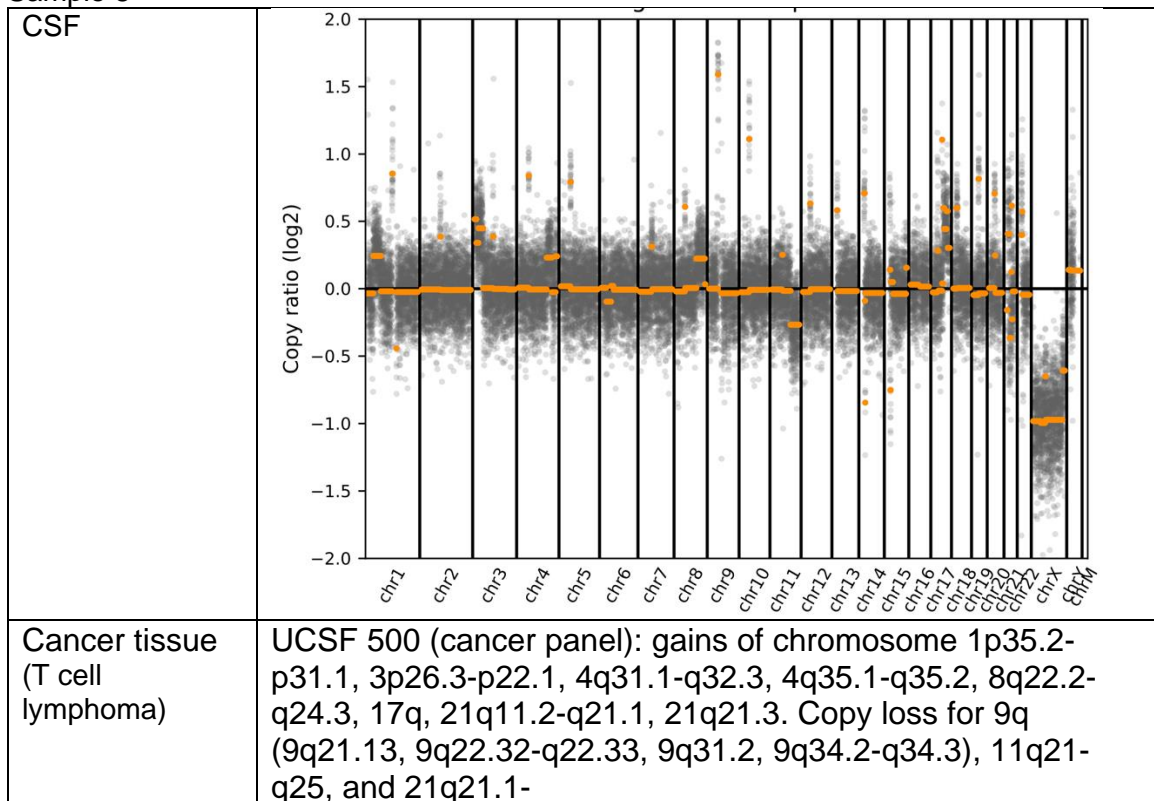
Cancer tissue from
Brain biopsy
(Glioblastoma,
grade IV)



Sample 40



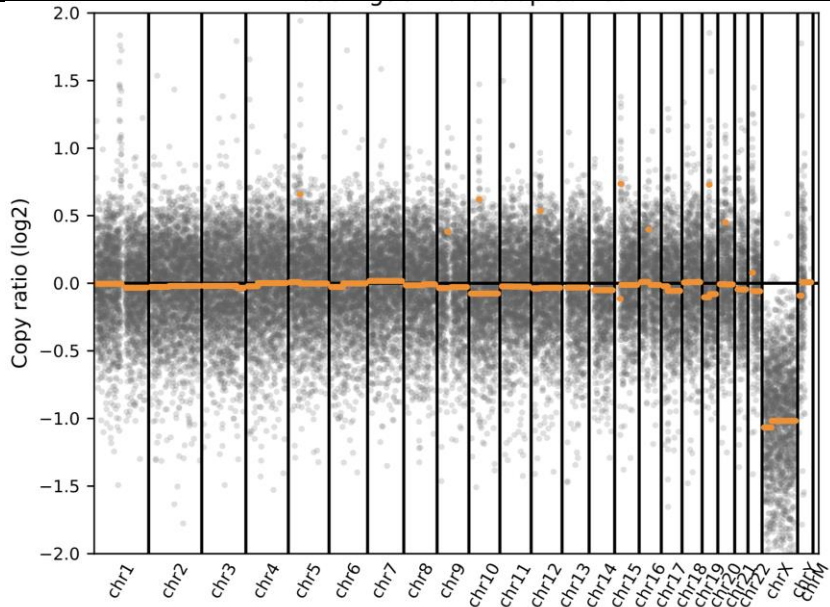
Sample 8



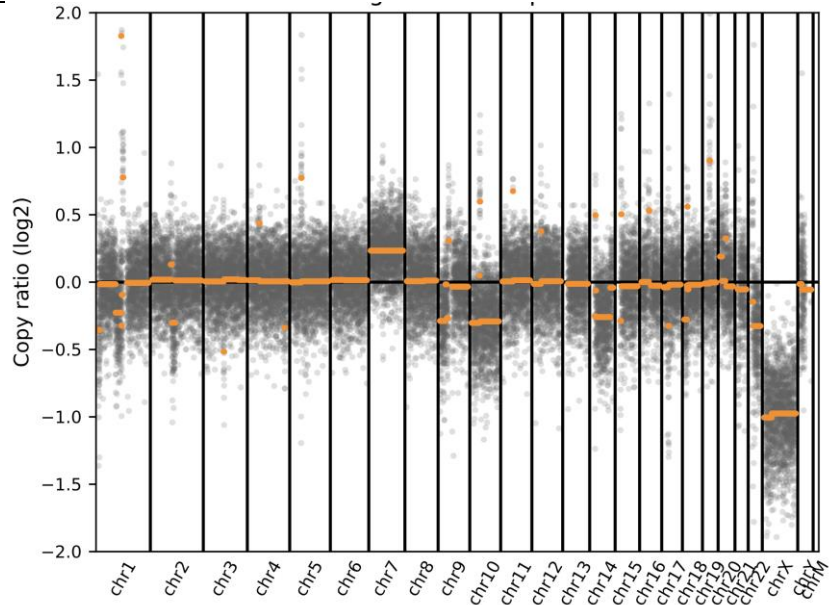
q21.2, 21q22.11.

Sample 45

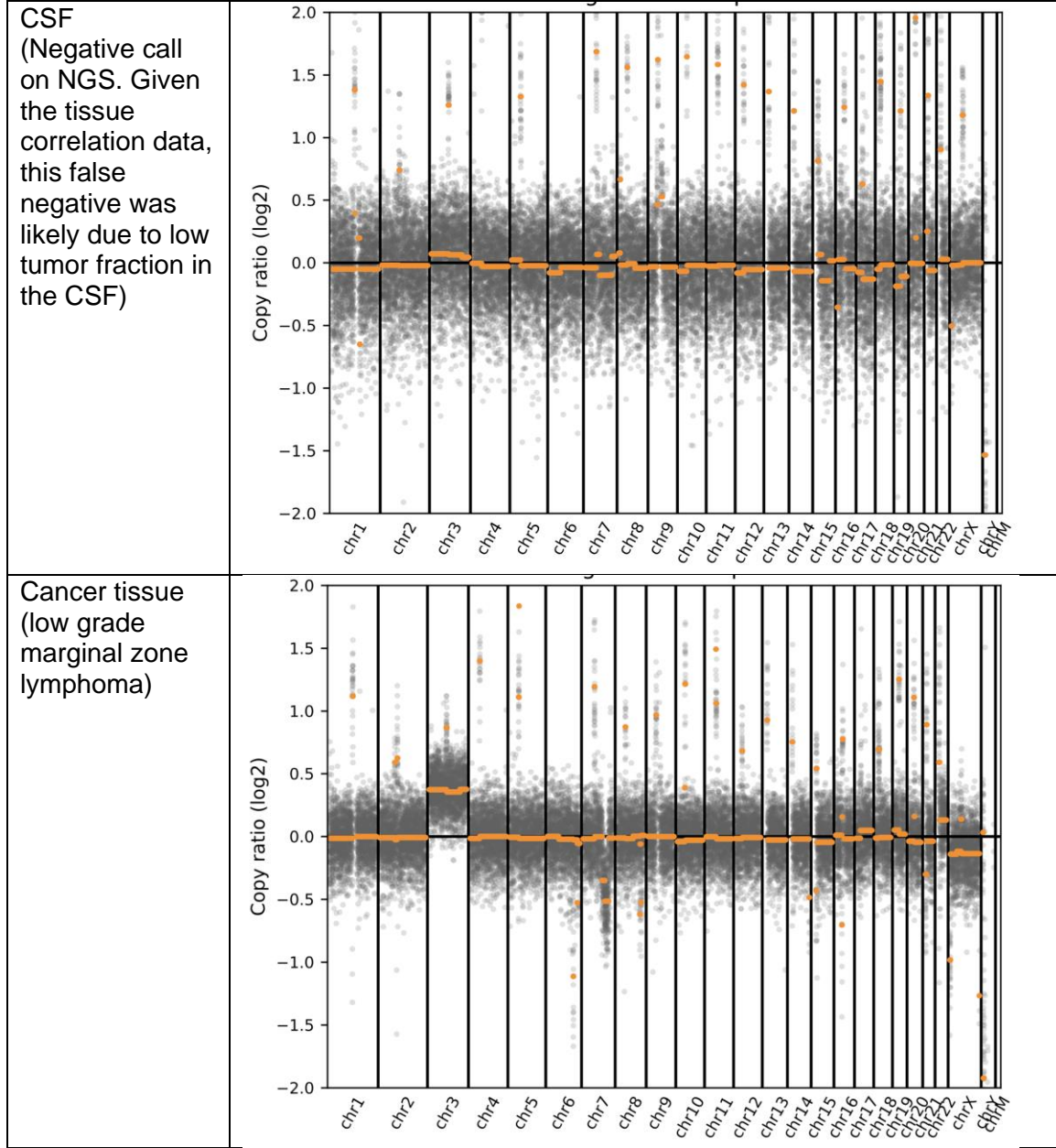
CSF
(Negative call on NGS. Given the tissue correlation data, this false negative was likely due to low tumor fraction in the CSF)



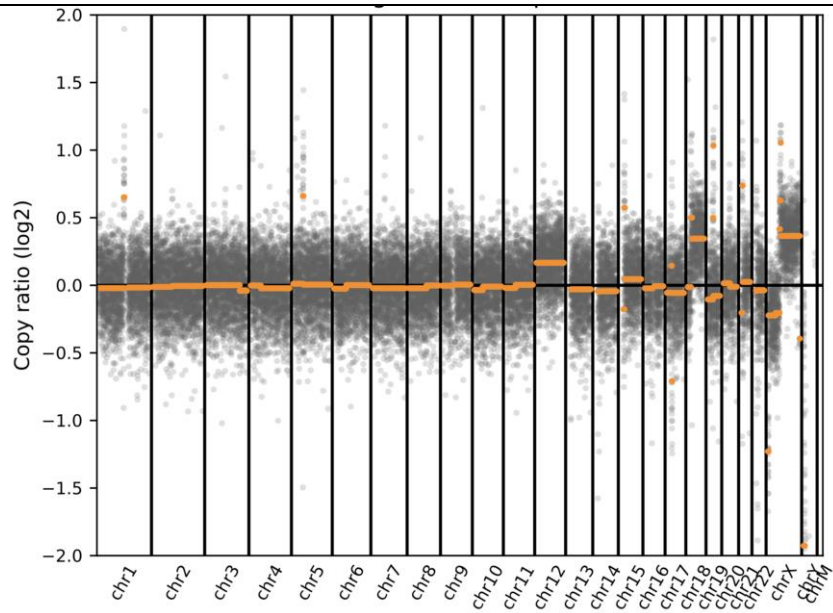
Cancer tissue from
Brain biopsy
(Glioblastoma,
grade IV)



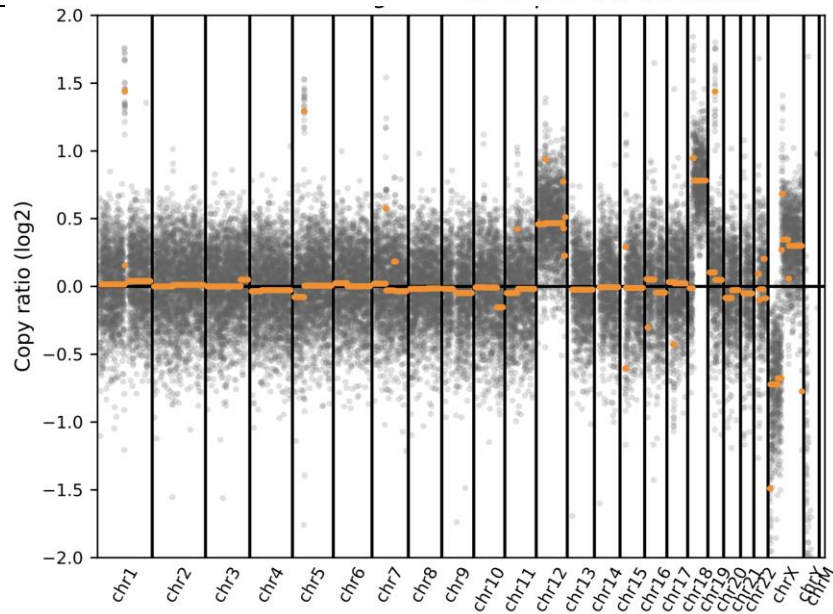
Sample 46



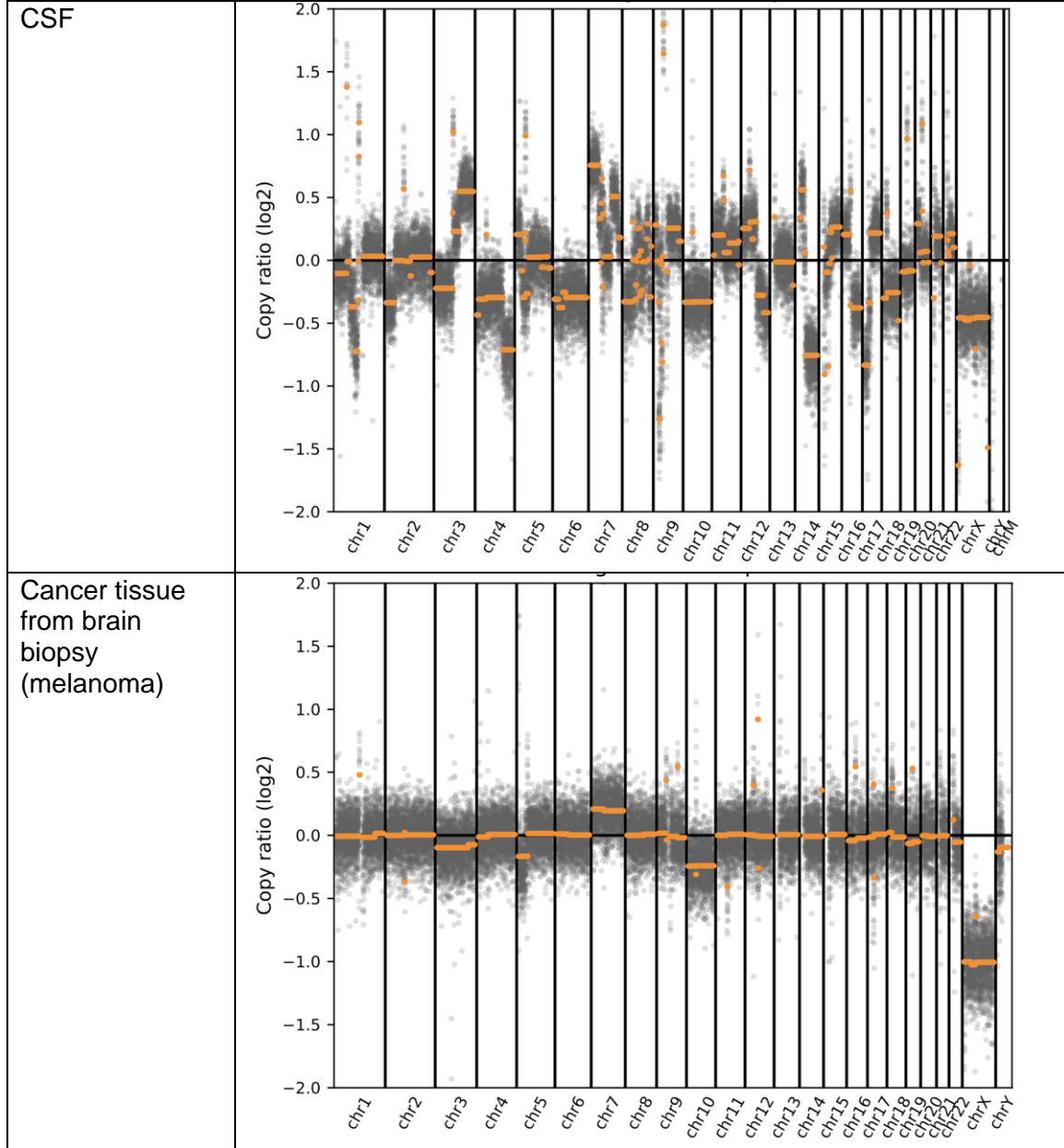
Sample 48
CSF



Cancer tissue
(large B-cell
lymphoma)

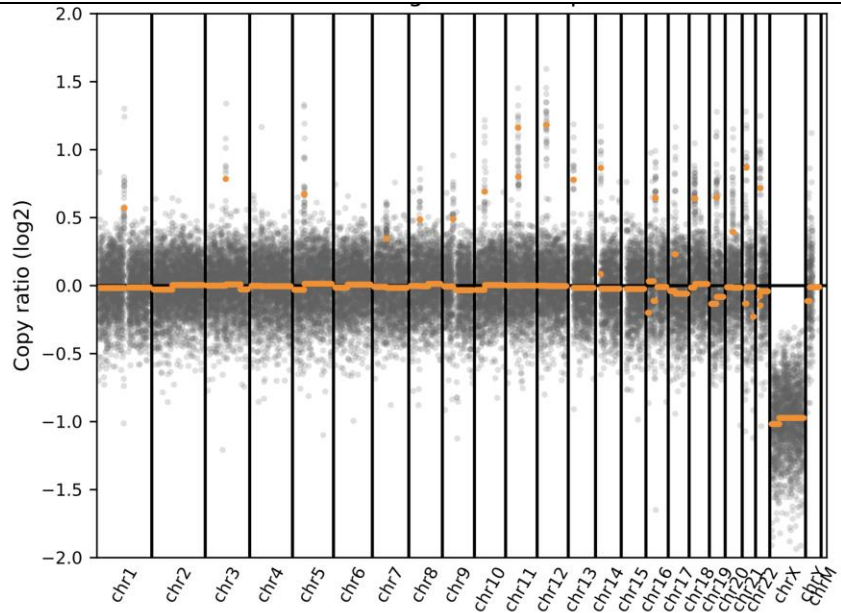


Sample 129

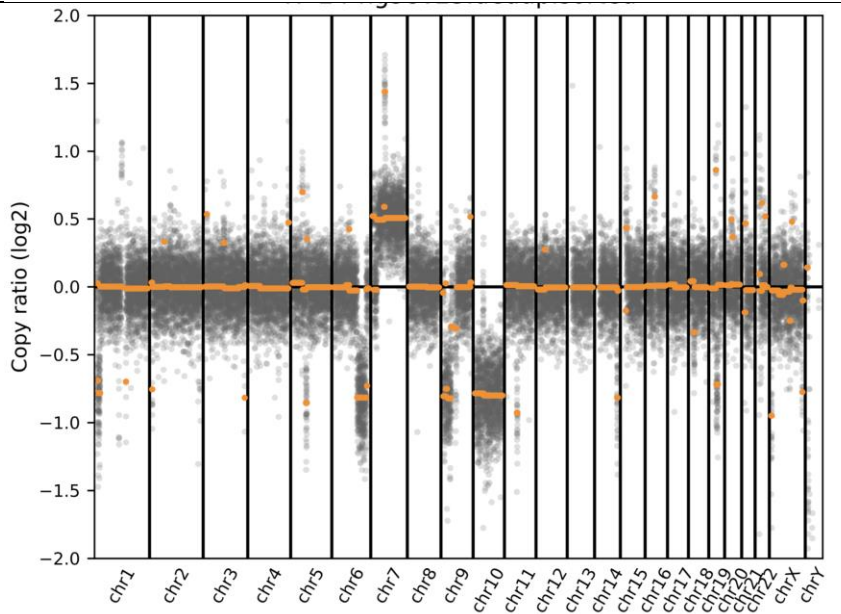


Sample 130

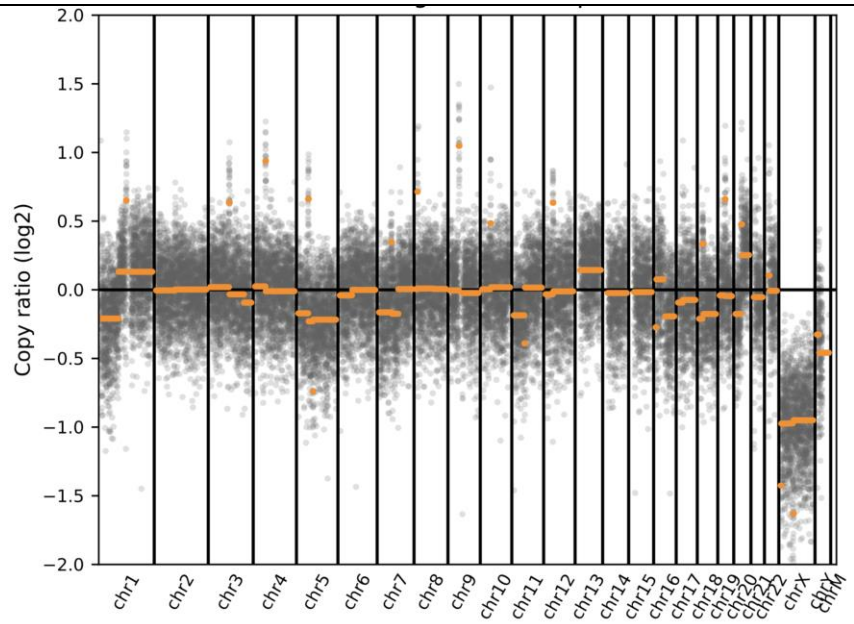
CSF
(negative by
mNGS)



Cancer tissue
from brain biopsy
(glioblastoma)



Sample 134
CSF



Cancer tissue
from brain
biopsy
(melanoma)

