

Supplementary Materials

Figure S1: Hypoxaemia prevalence among children aged 2-59 months admitted to icddr,b Dhaka Hospital with WHO-defined severe pneumonia between 2014-17, presented in percentage by age groups; N=2646.

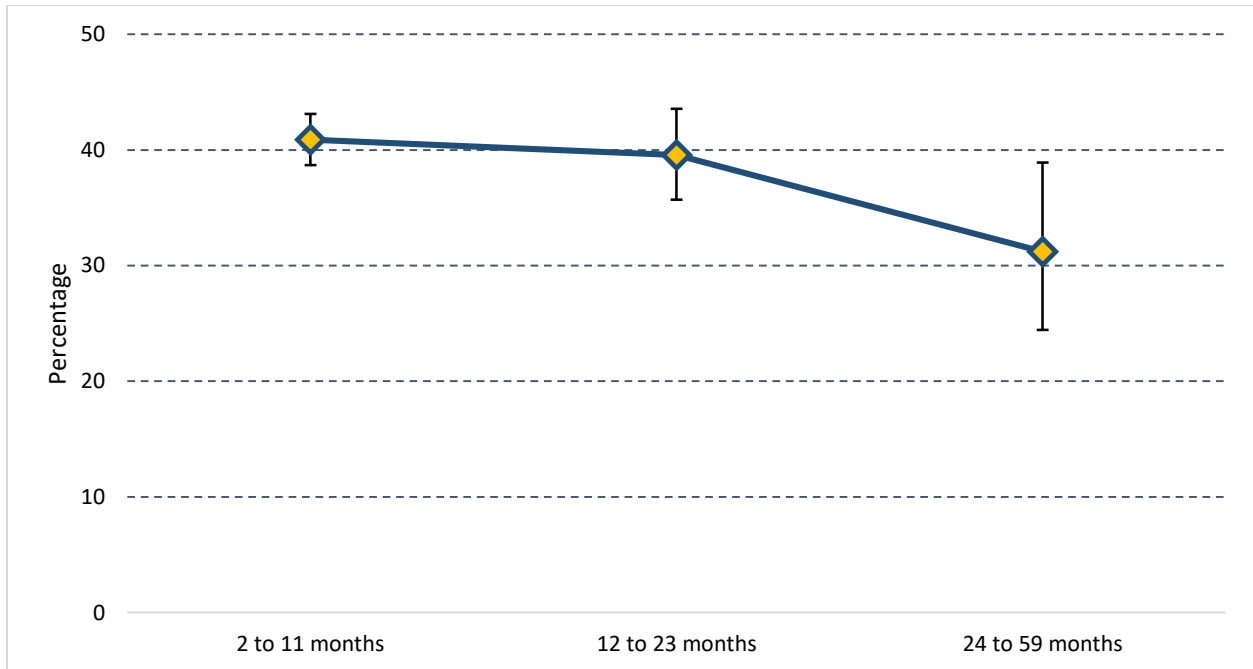


Figure S2: Distribution of hospital outcomes of children aged 2-59 months admitted to icddr,b-Dhaka Hospital with WHO-defined clinical pneumonia between 2014-17, presented in percentage by hypoxaemia status on admission.

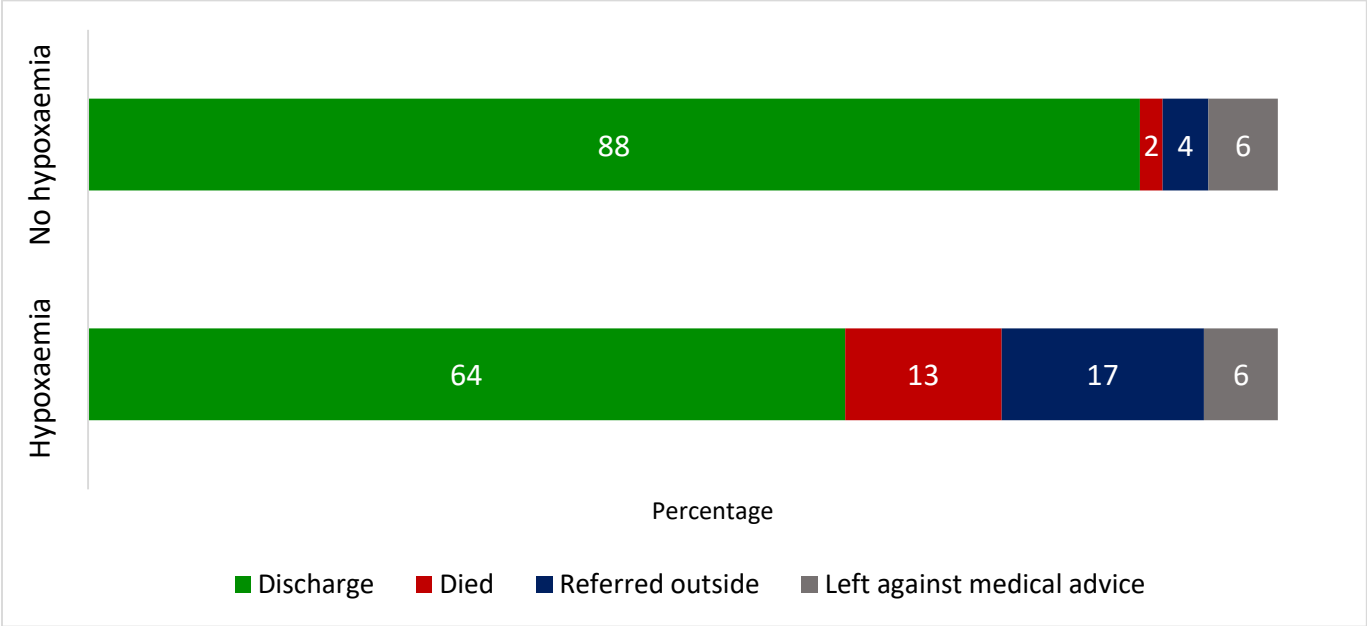


Figure S3: Trend in the case fatality rates of children aged 2-59 months admitted to icddr,b-Dhaka Hospital with WHO-defined clinical pneumonia between 2014-17, presented in percentage by hypoxaemia status on admission and disaggregated by the year.

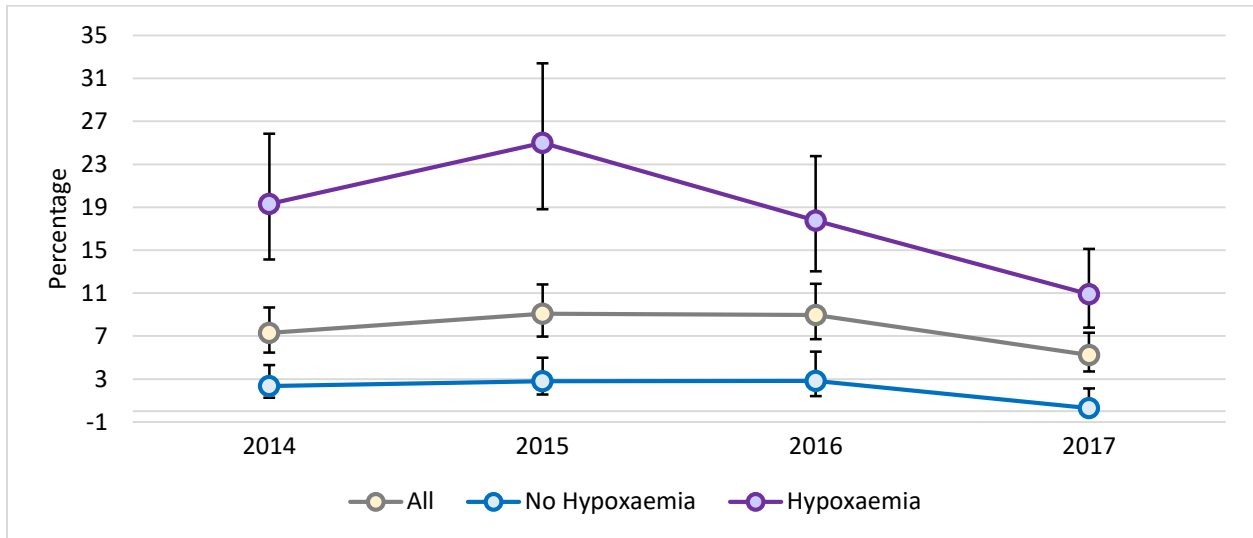


Figure S4: Risk of adverse hospital outcomes among children aged 2-59 months admitted to icddr,b Dhaka Hospital with WHO-defined severe pneumonia and hypoxaemia between 2014-17, presented in adjusted odds ratio; N=2646.

