

1 **Supplementary Materials**

2 **PET Imaging of Translocator Protein as a Marker of Malaria-Associated Lung**
3 **Inflammation**

4
5 Julian L Goggi^a; Carla Claser^{b,c}; Siddesh V Hartimath^a; Pei Xiang Hor^d; Tan Peng Wen^a;
6 Boominathan Ramasamy^a; Hussein Abdul Rahman^a, Peter Cheng^a; Zi Wei Chang^{b,d};
7 Samantha Yee Teng Nguet^d; Tang Jun Rong^a; Edward G Robins^{a,e}; Laurent Renia^{b,d}

8 ^a Singapore Bioimaging Consortium, Agency for Science, Technology and Research
9 (A*STAR), 11 Biopolis Way, #01-02 Helios, Singapore 138667.

10 ^b Singapore Immunology Network, A* STAR, 8A Biomedical Grove, Immunos, Singapore,
11 138648

12 ^c Department of Parasitology, Institute of Biomedical Sciences, University of São
13 Paulo, São Paulo - SP, Brazil.

14 ^d A*STAR Infectious Diseases Laboratories, A* STAR, 8A Biomedical Grove, Immunos,
15 Singapore, 138648

16 ^e Clinical Imaging Research Centre, 14 Medical Drive, #B1-01, Yong Loo Lin School of
17 Medicine, National University of Singapore, Singapore 117599.

18

19 *Corresponding author:

20 Dr Julian Luke Goggi

21 Julian_goggi@sbic.a-star.edu.sg

22 Tel: +65 6478 8901

23 Fax: +65 6478 8908

24 Abbreviated title: Imaging of Malaria Associated Lung Inflammation.

25 Keywords: malaria, PET, lung, PbA, macrophages

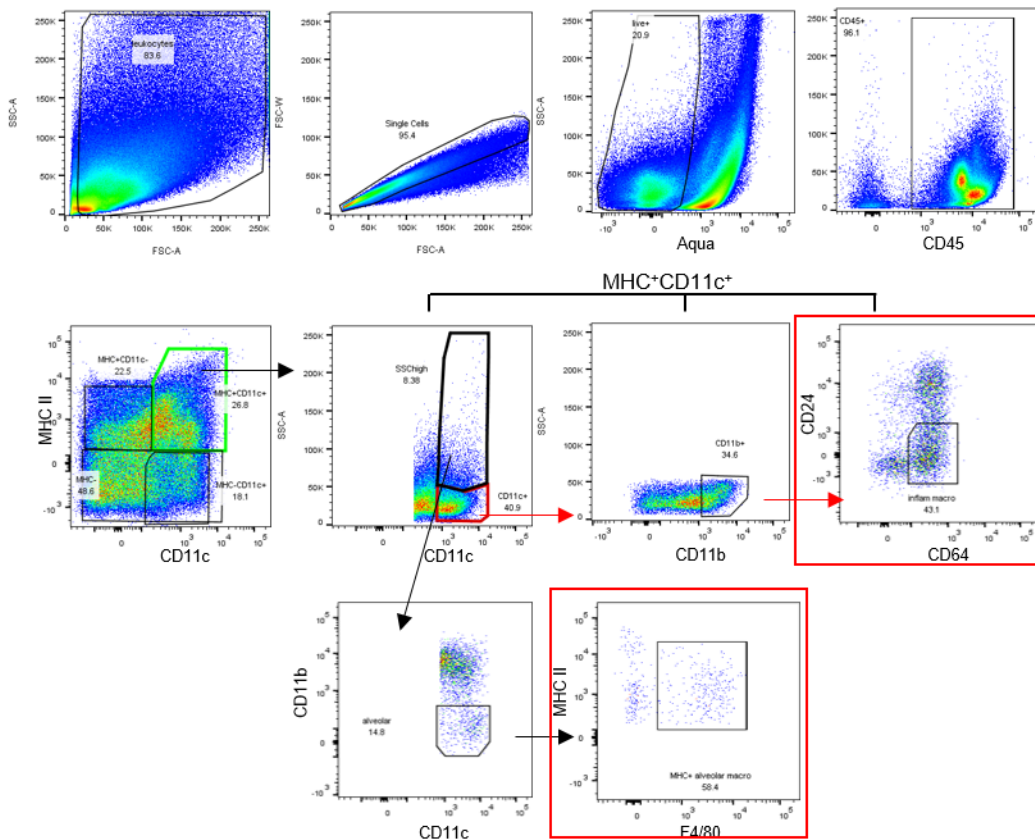
26

27

Antibody	Clone	Fluorochrome
CD45	30-F11	APC-Cy7
CD11b	M1/70	BV 650
CD11c	N418	PE-Cy7
CD24	M1/69	Pacblue
CD64	X54-5/7.1	PE
MHC II	M5/114.15.2	Alexa Fluor 700
Ly6C	HK1.4	PerCP-Cy5.5
F4/80	BM8	Biotin

29

30 **Supplementary Table 1: Antibodies used for Flow Cytometry**



31

32 **Supplementary Figure 1.** Gating strategy used to analyse flow cytometry data of myeloid
33 cells present in the lung tissue. Gating strategy for interstitial inflammatory macrophages and
34 MHC II+ alveolar macrophages indicated by top and bottom red boxes respectively.