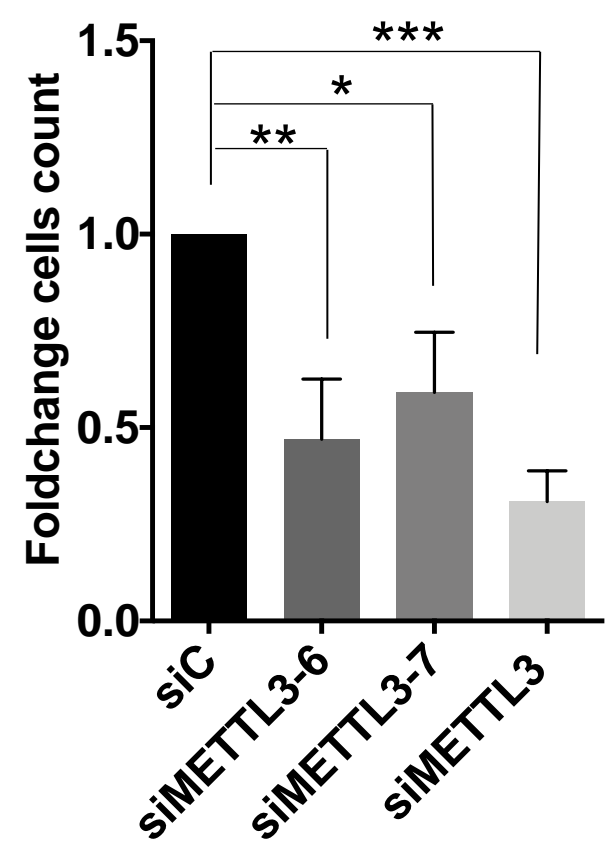
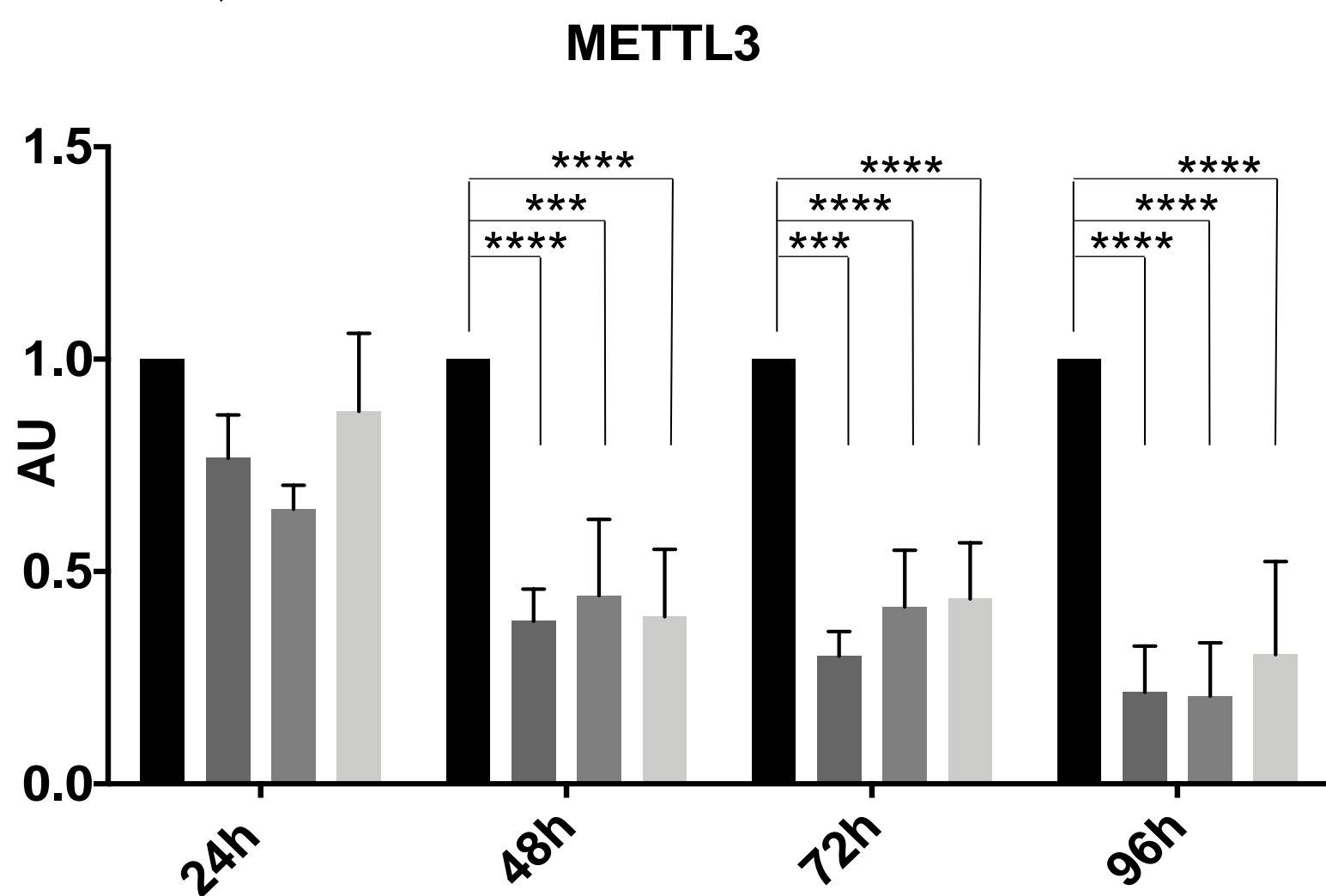
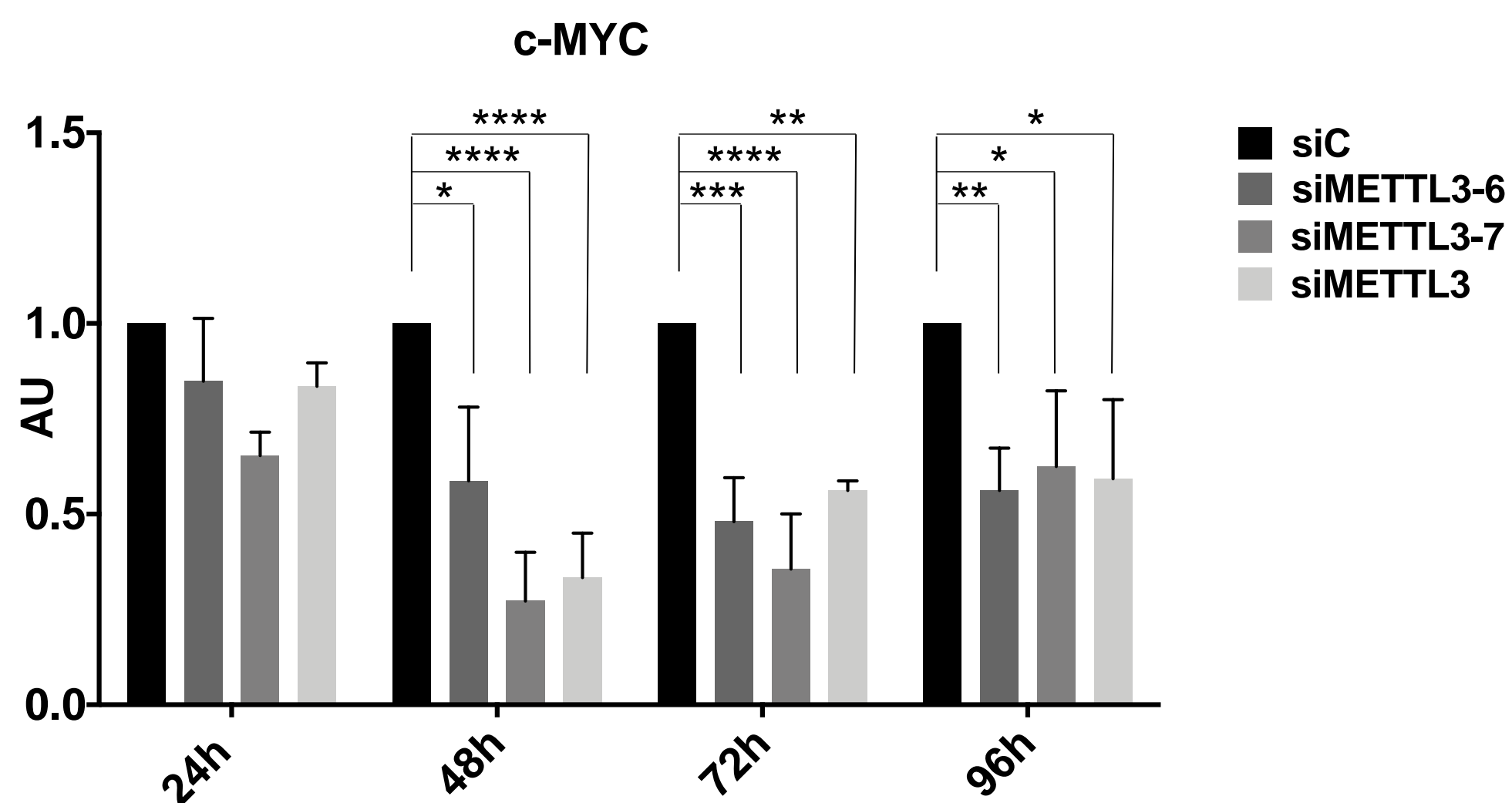
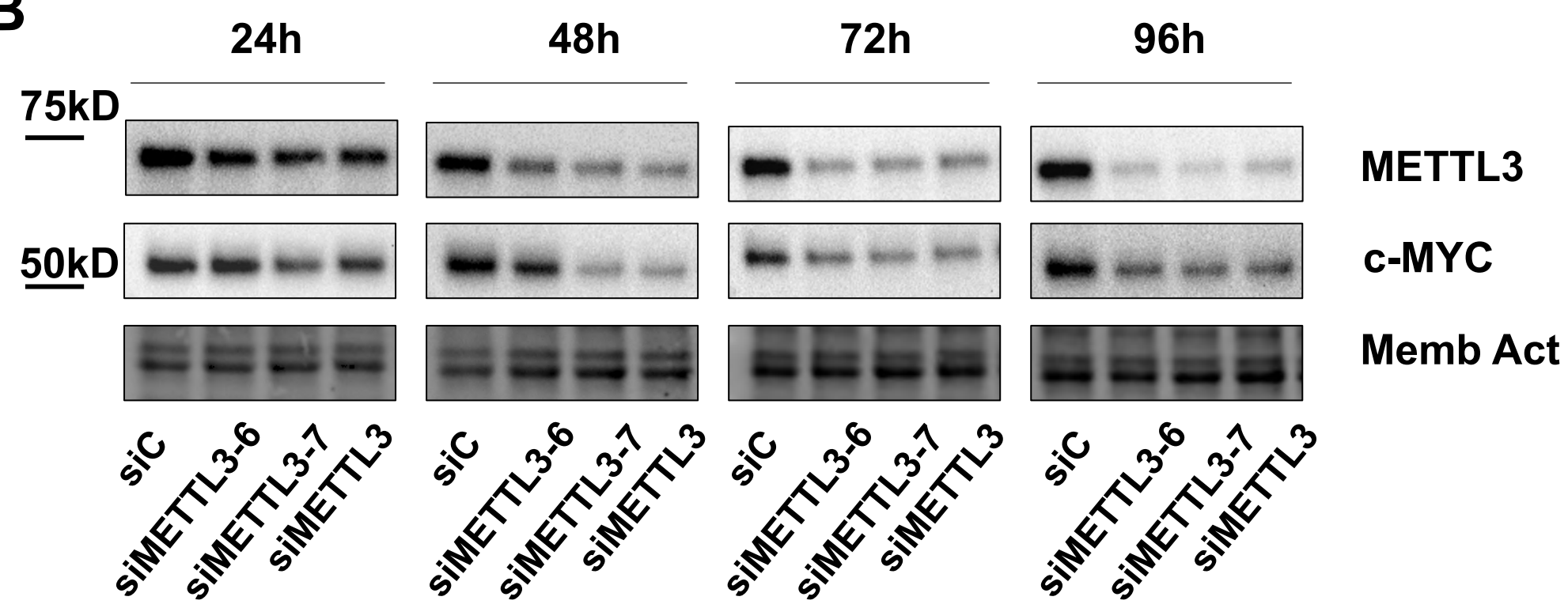


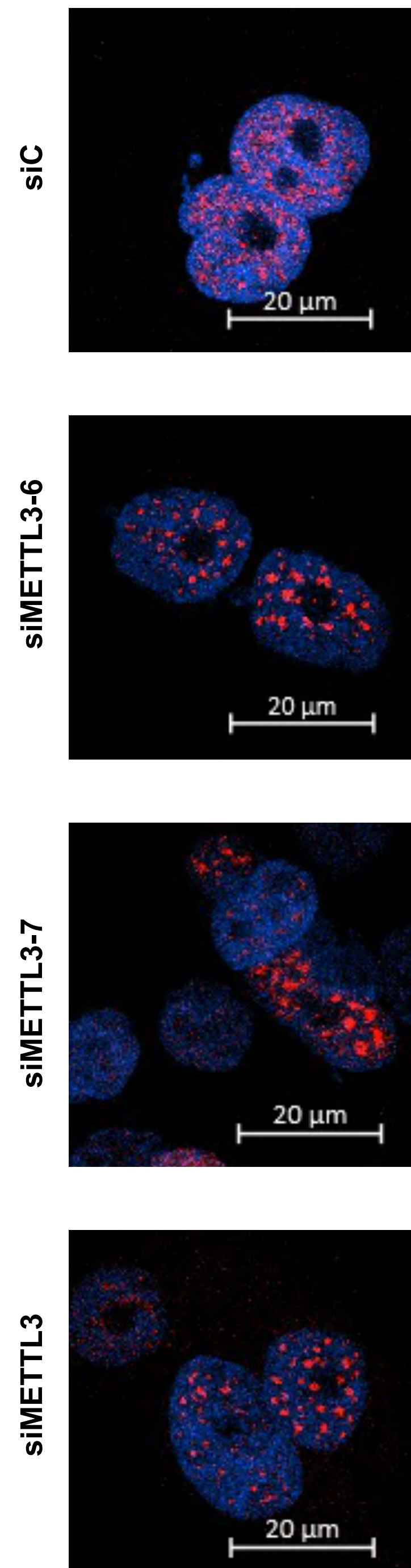
A



B



C



**Suppl. Fig. 2.** **A** TC1889 cells were transfected with siC, siMETTL3-6, siMETTL3-7 and siMETTL3 (a pool of four siRNA) and counted with Trypan blue at 96h (n=3). **B** Representative WB of c-MYC and METTL3 after 24, 48, 72 and 96h of METTL3-6, METTL3-7 and METTL3 depletion. Quantifications of three independent experiments are shown in the bottom panel. **C** Analysis of MALAT1 subcellular localization by RNA FISH in control (siC) and METTL3-silenced (siMETTL3-6, siMETTL3-7 and siMETTL3) samples at 72h.