

# Full unedited gel for Figures

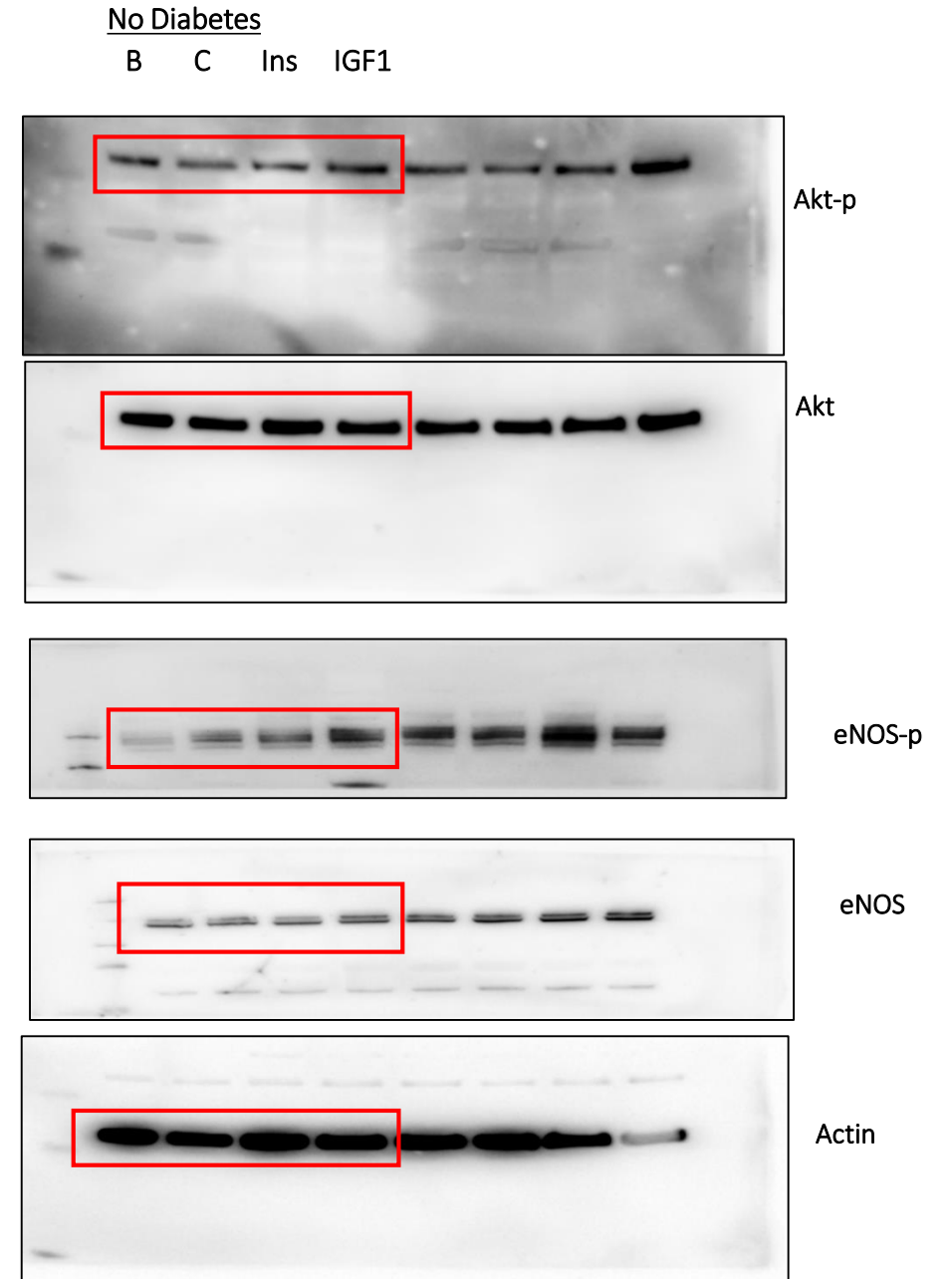
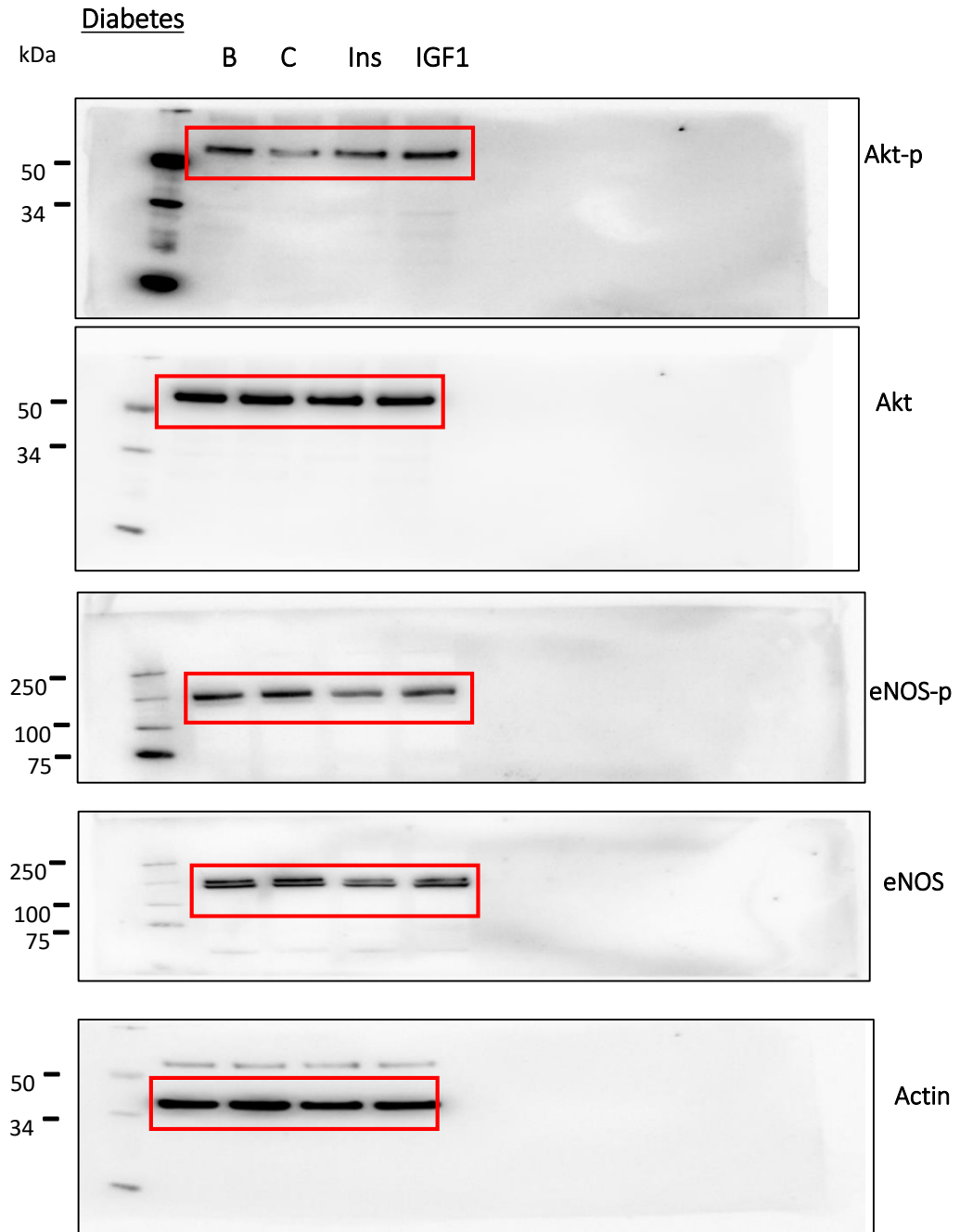
## Novel Paracrine Action of Endothelium enhances Glucose Uptake in Muscle and Fat

<sup>1\*</sup>Hema Viswambharan PhD, <sup>1\*</sup>Nadira Yuldasheva PhD, <sup>1</sup>Helen Imrie PhD, <sup>1</sup>Katherine Bridge MBChB, PhD, <sup>1</sup>Natalie Haywood PhD, <sup>1</sup>Anna Skromna MSc, <sup>1</sup>Karen Hemmings PhD, <sup>1</sup>Emily Clark PhD, <sup>1</sup>V Kate Gatenby MBChB, PhD, <sup>1</sup>Paul Cordell PhD, <sup>1</sup>Katie J Simmons PhD, <sup>1</sup>Natallia Makava BSc, <sup>1</sup>Yilizila Abudushalamu MSc, <sup>1</sup>Naima Endesh PhD, <sup>1</sup>Jane Brown BSc, <sup>1</sup>Andrew Walker MBChB, PhD, <sup>1</sup>Simon T Futers PhD, <sup>1</sup>Karen E Porter PhD, <sup>1</sup>Richard M Cubbon PhD, <sup>1</sup>Khalid Naseem BSc, PhD, <sup>2</sup>Ajay M Shah MD, FMedSci, <sup>1</sup>David J Beech PhD, FMedSci, <sup>1</sup>Stephen B Wheatcroft MBChB, PhD, <sup>1</sup>Mark T Kearney DM, FRCP, <sup>1</sup>Piruthivi Sukumar MBBS, PhD.

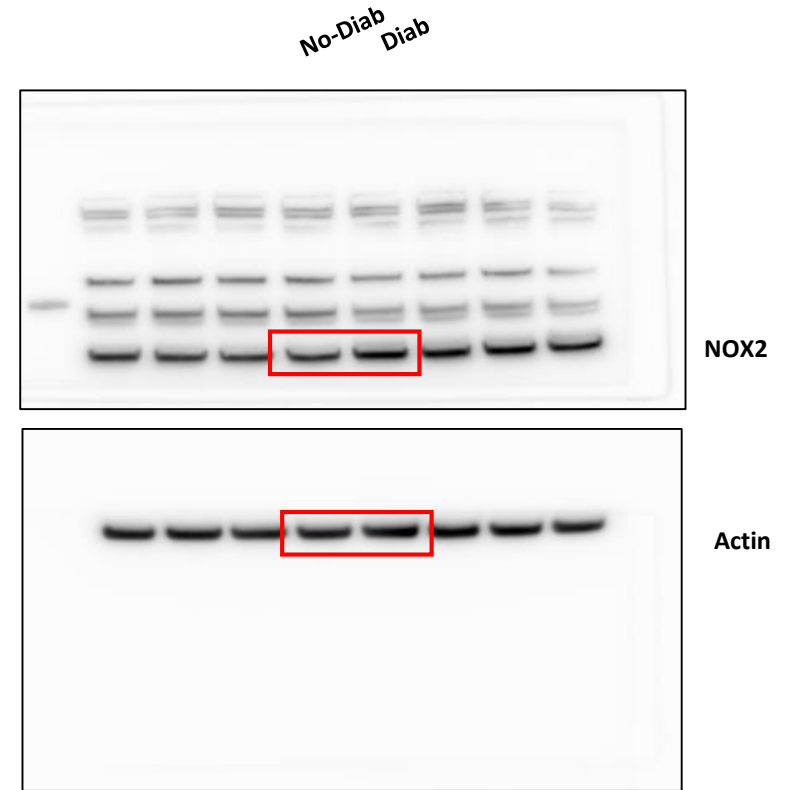
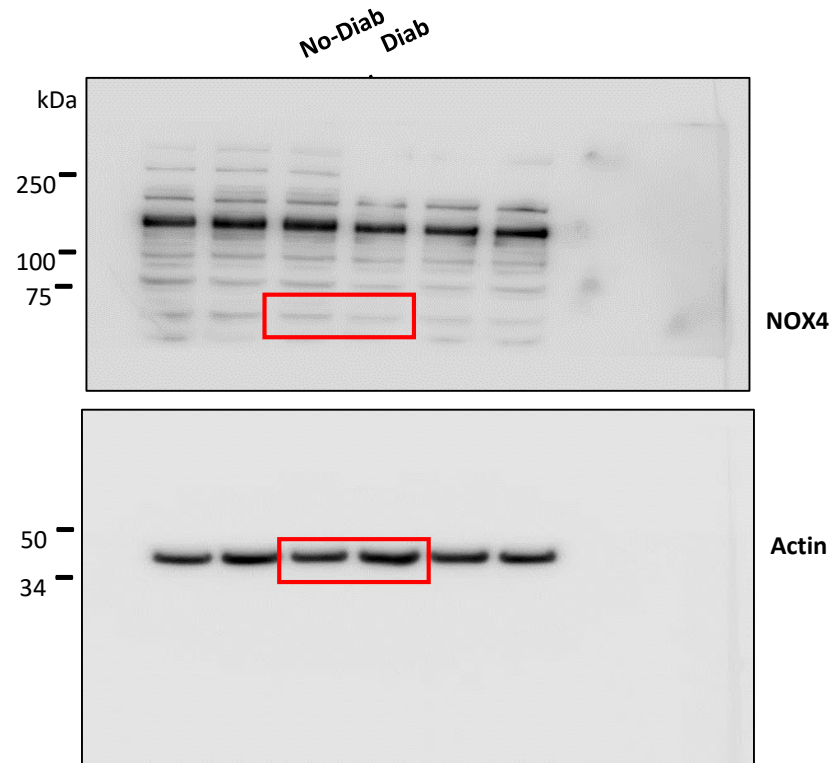
<sup>1</sup>Leeds Institute for Cardiovascular and Metabolic Medicine, University of Leeds, United Kingdom.

<sup>2</sup> British Heart Foundation Centre of Research Excellence, Kings College London.

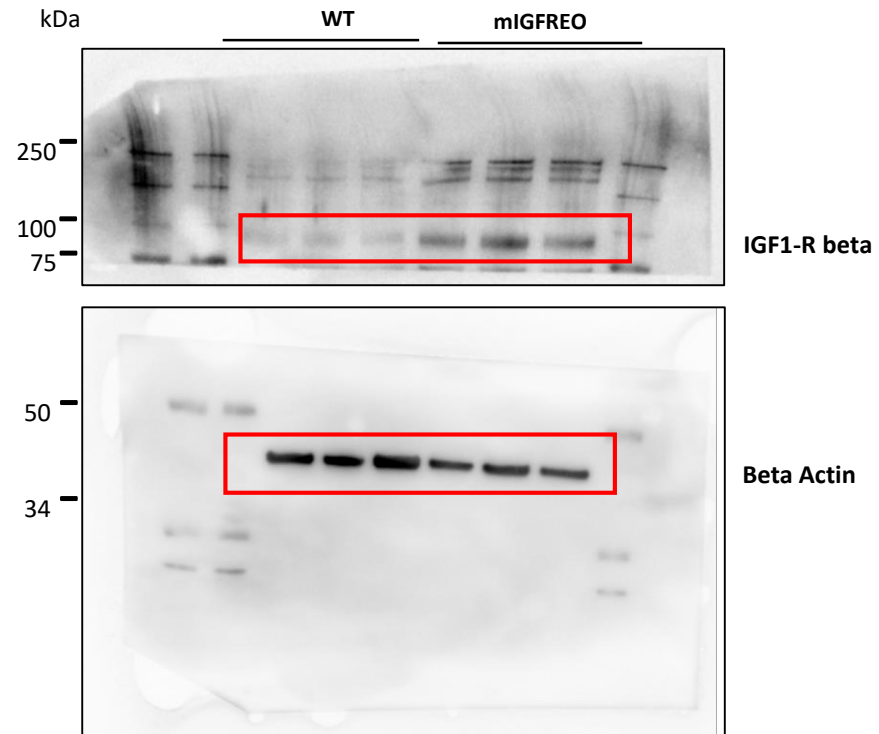
# Full unedited gel for Figure 1G



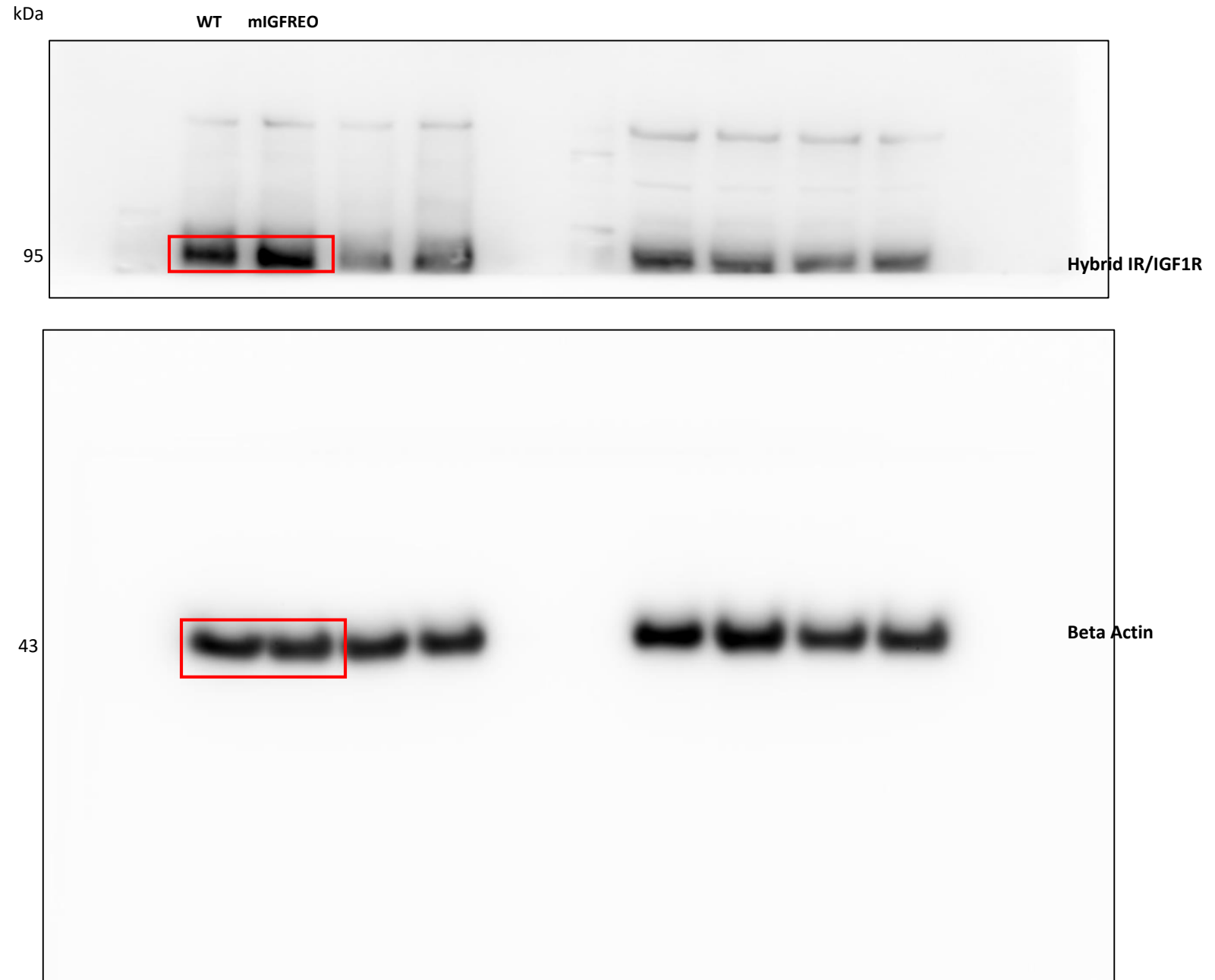
# Full unedited gel for Figure 1H



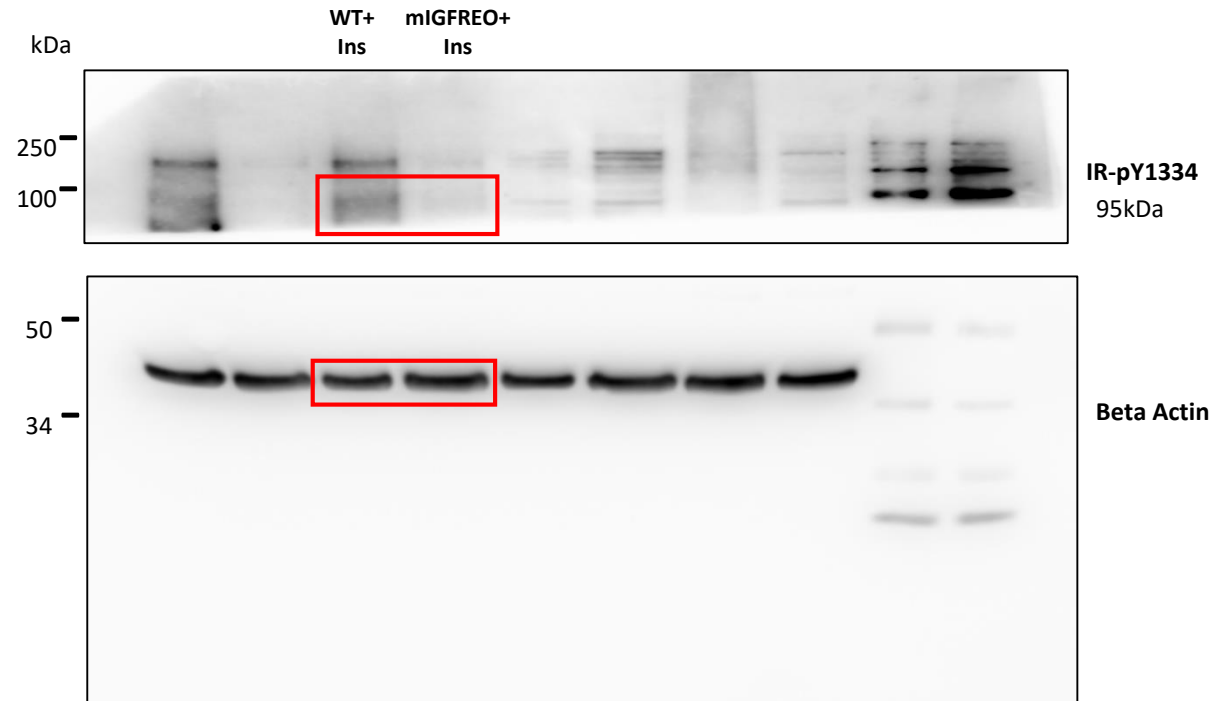
Full unedited gel for Figure 2E



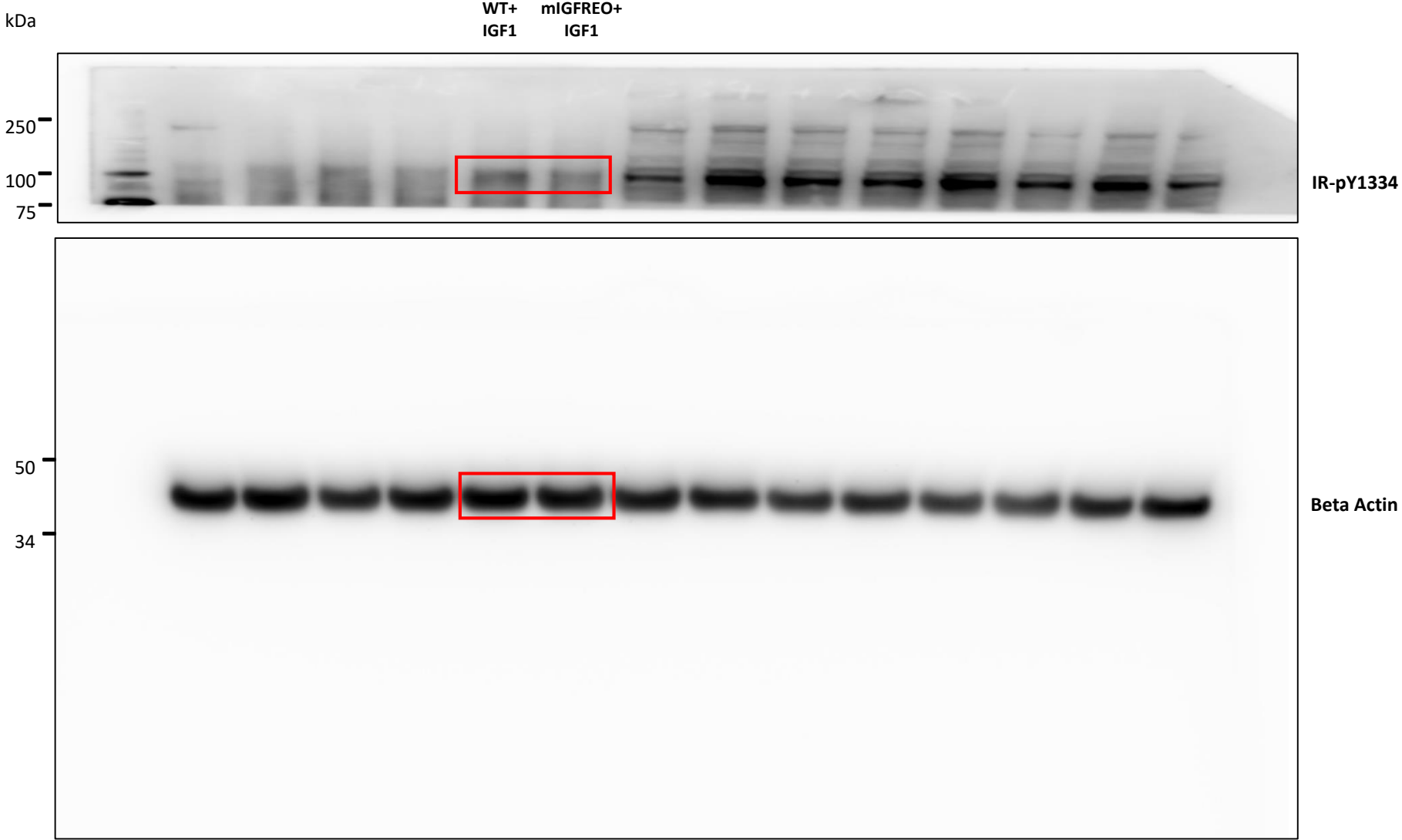
Full unedited gel for Figure 2F



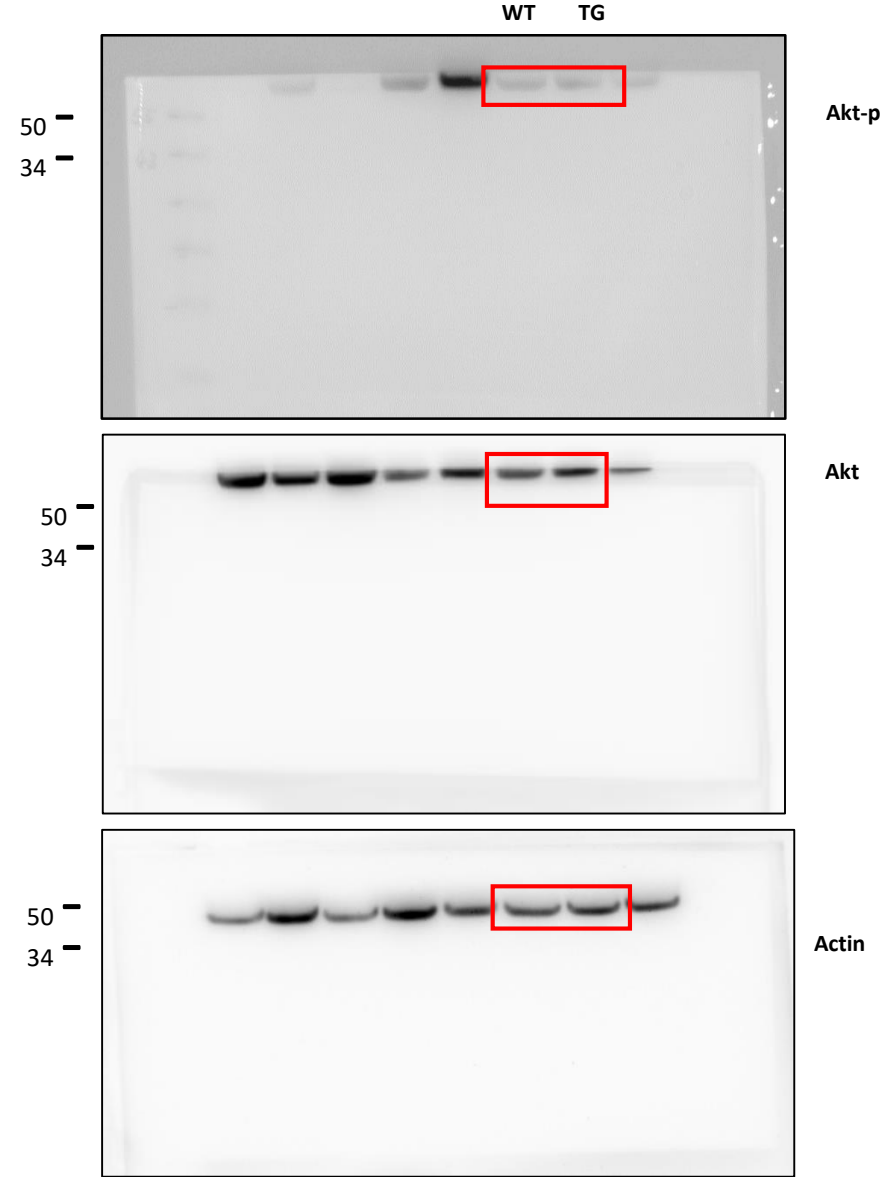
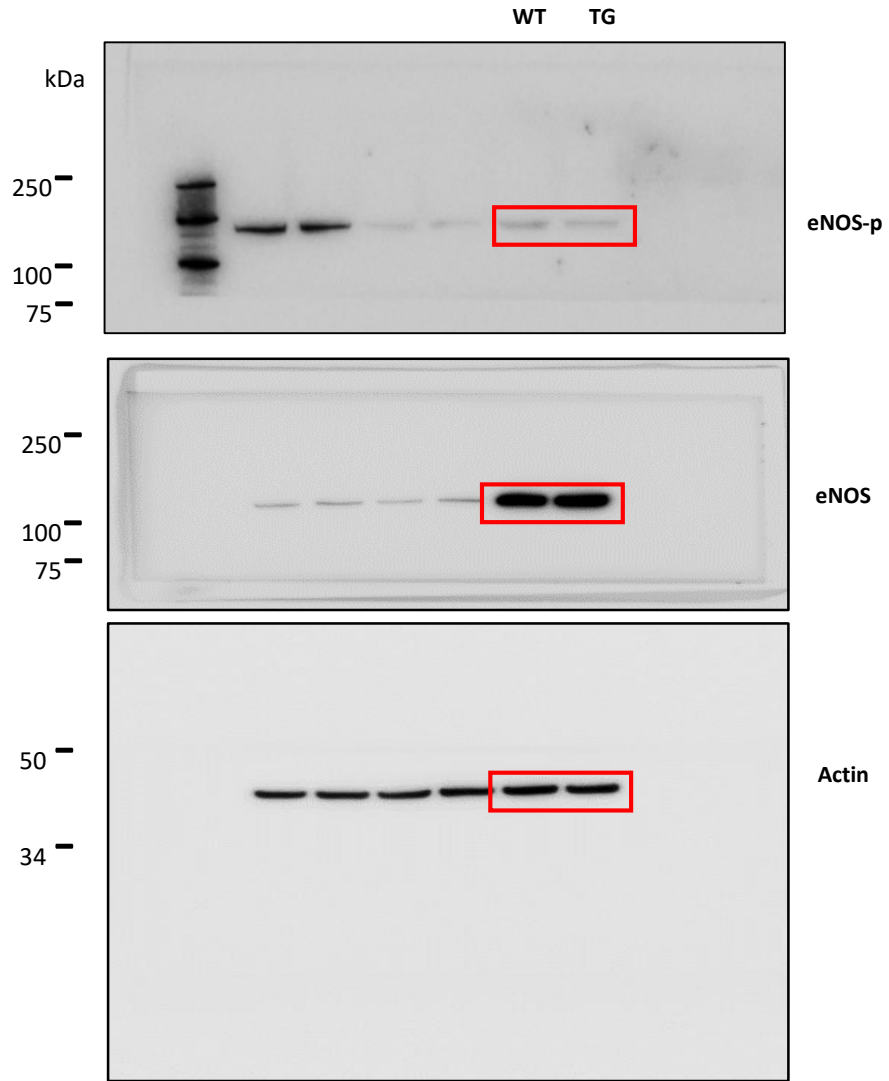
# Full unedited gel for Figure 2G



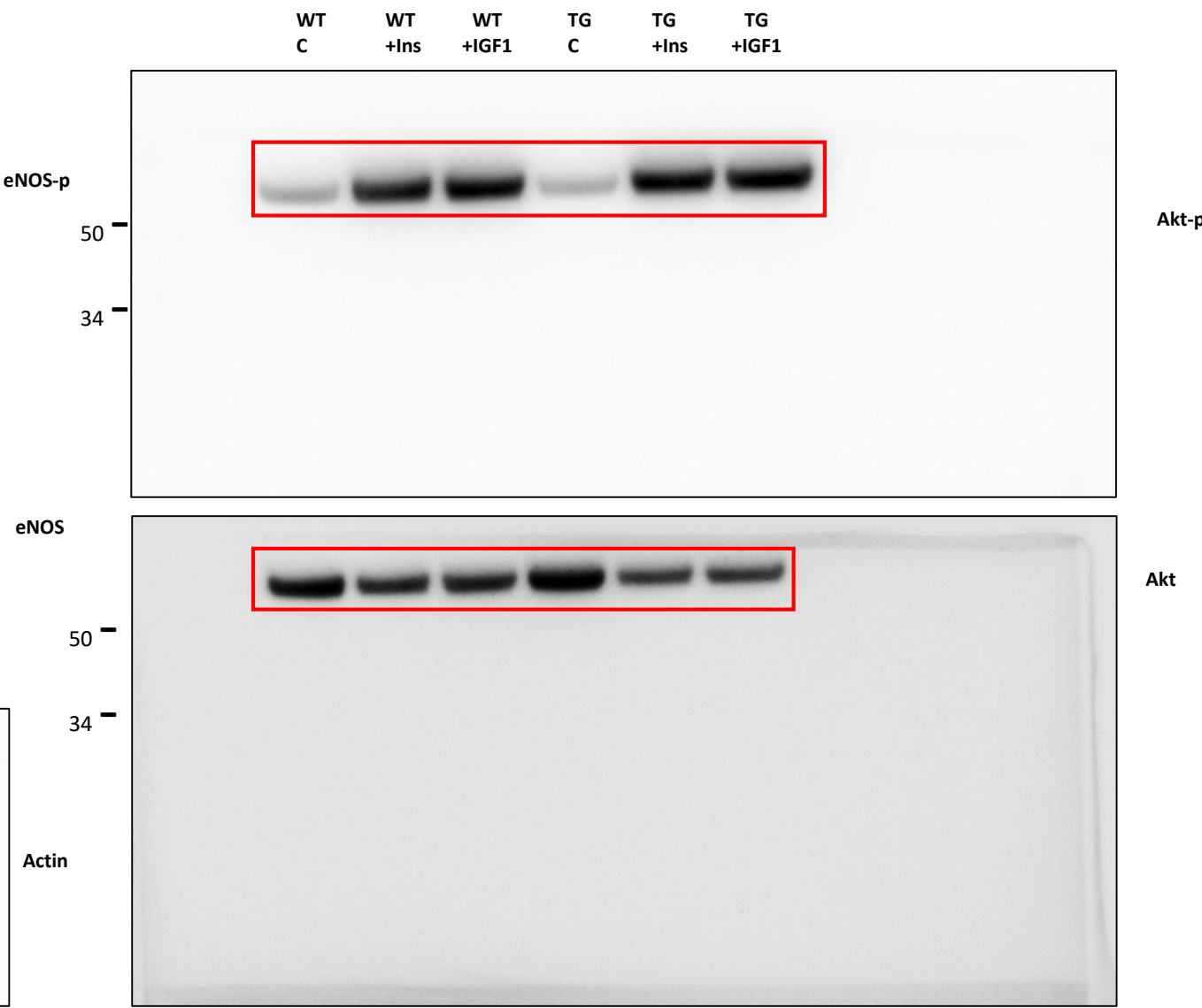
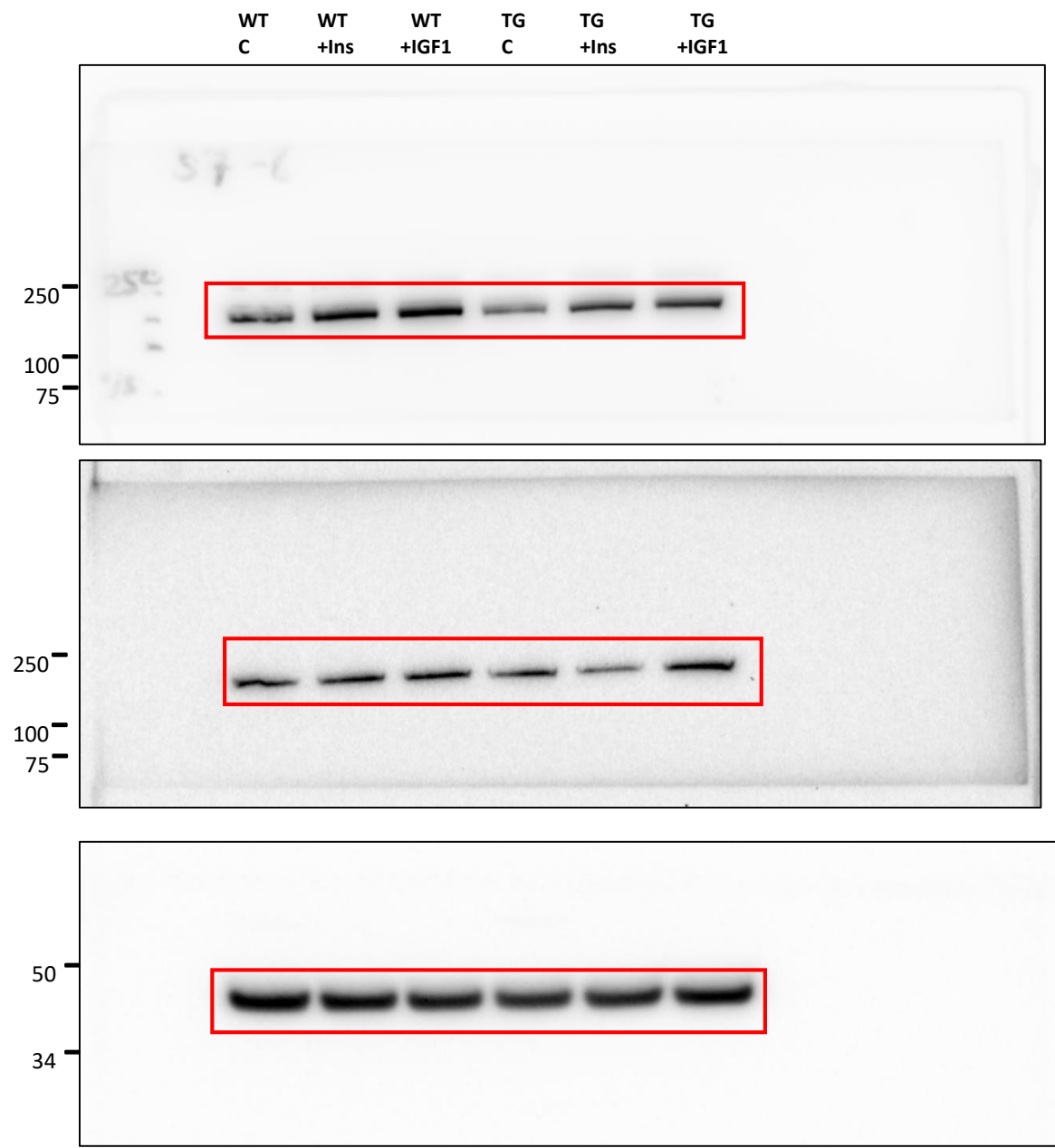
# Full unedited gel for Figure 2H



# Full unedited gel for Figure 3A

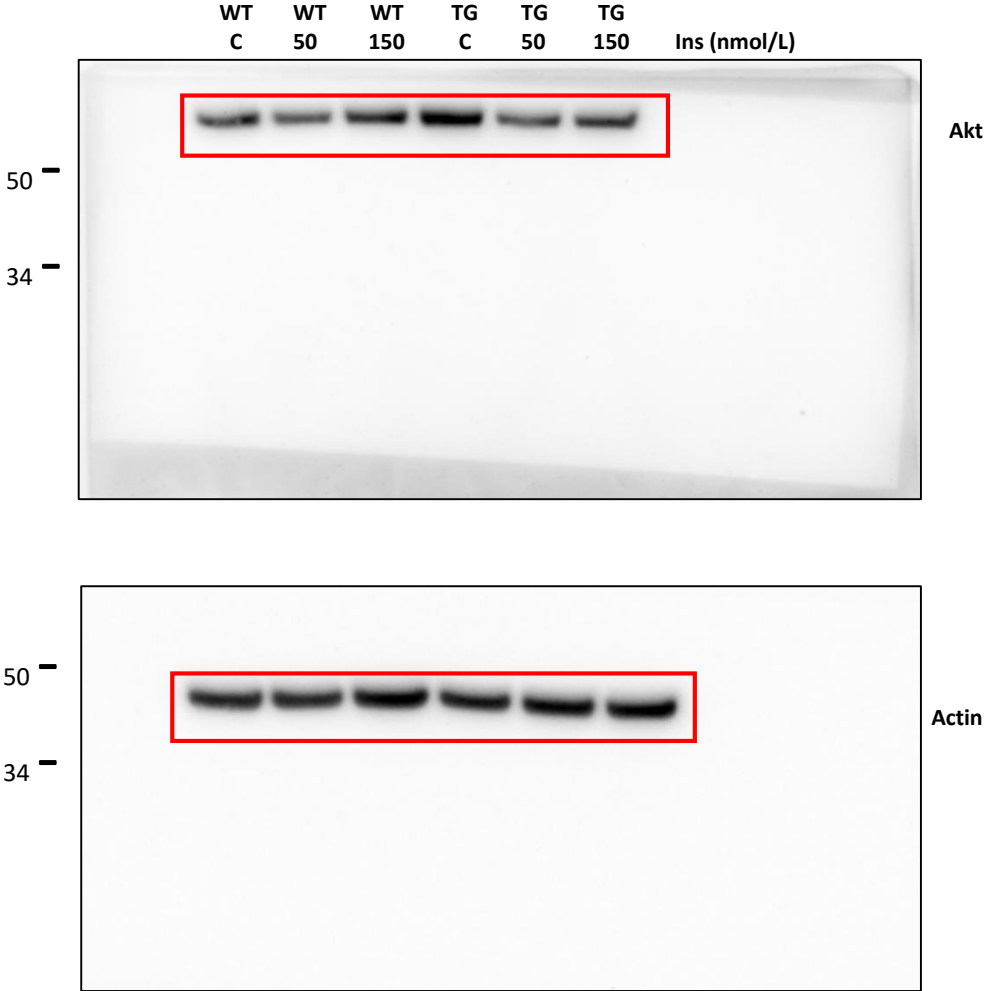
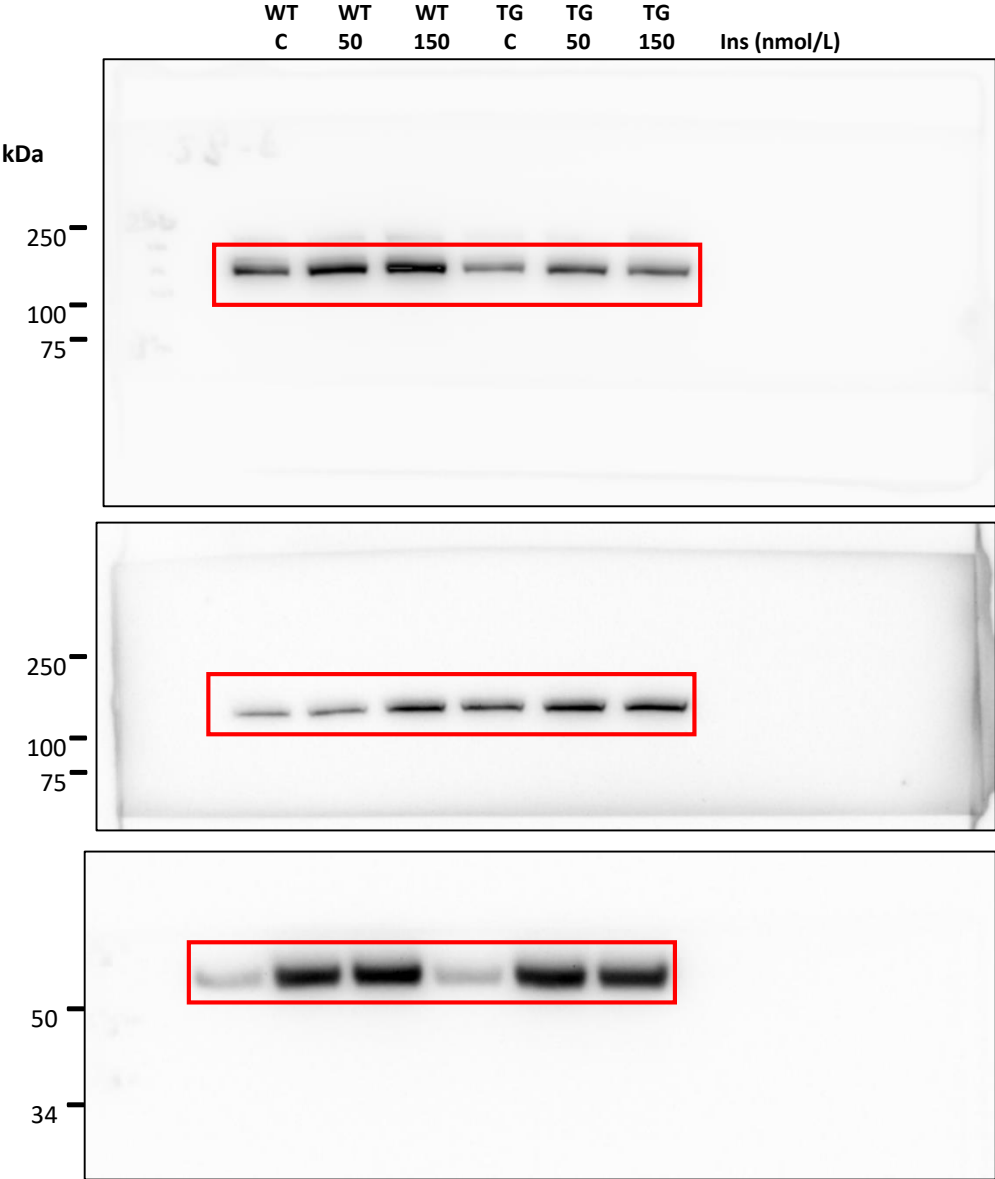


# Full unedited gel for Figure 4A

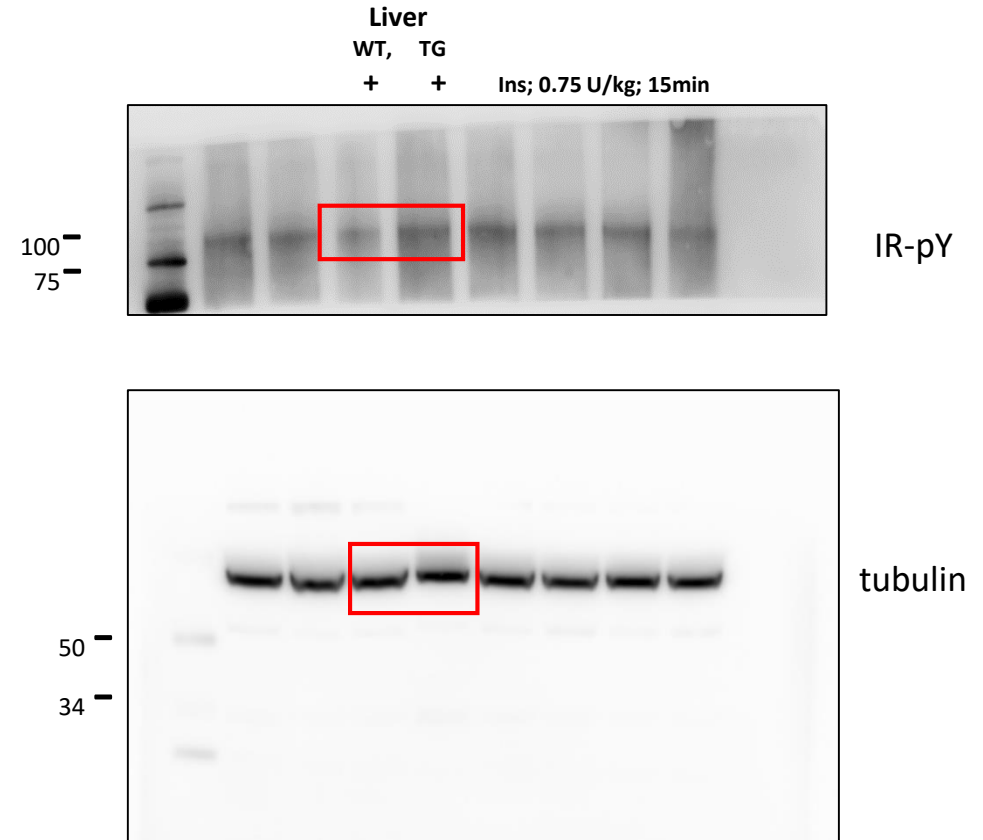
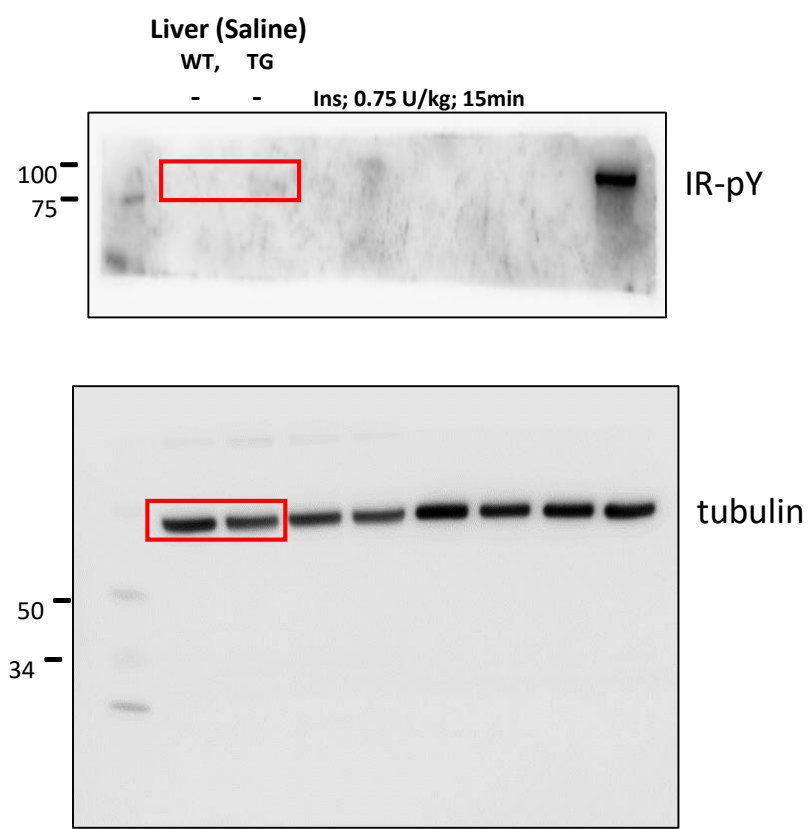




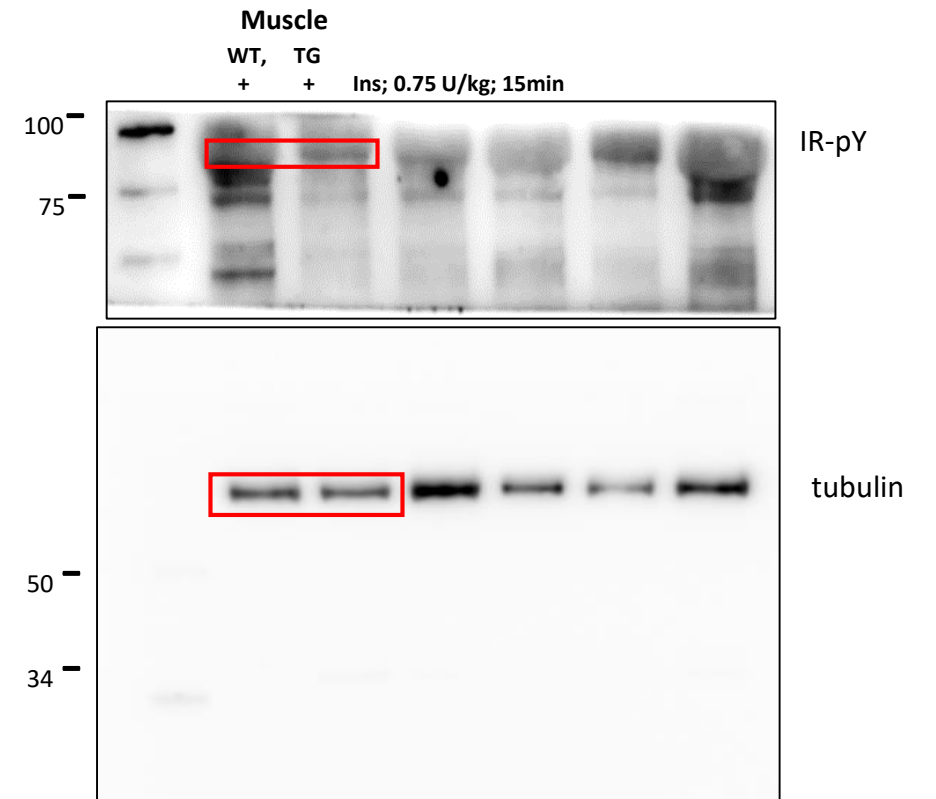
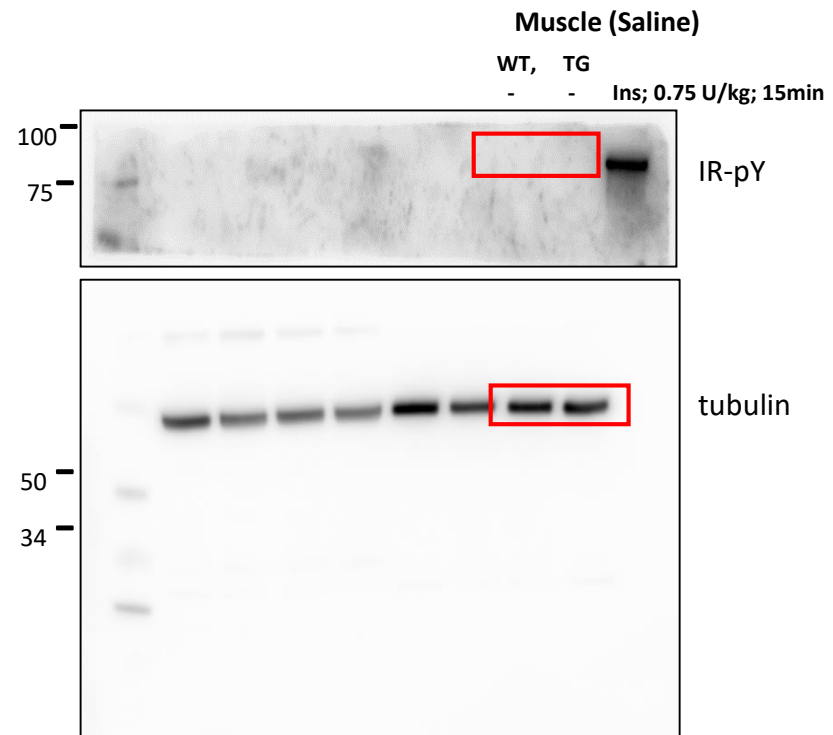
# Full unedited gel for Figure 4F



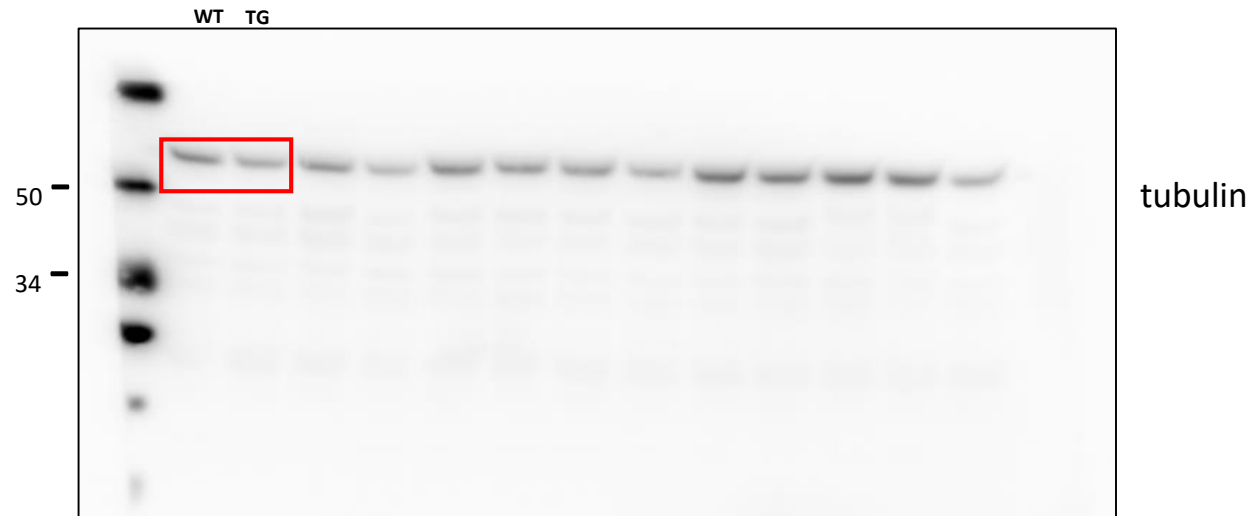
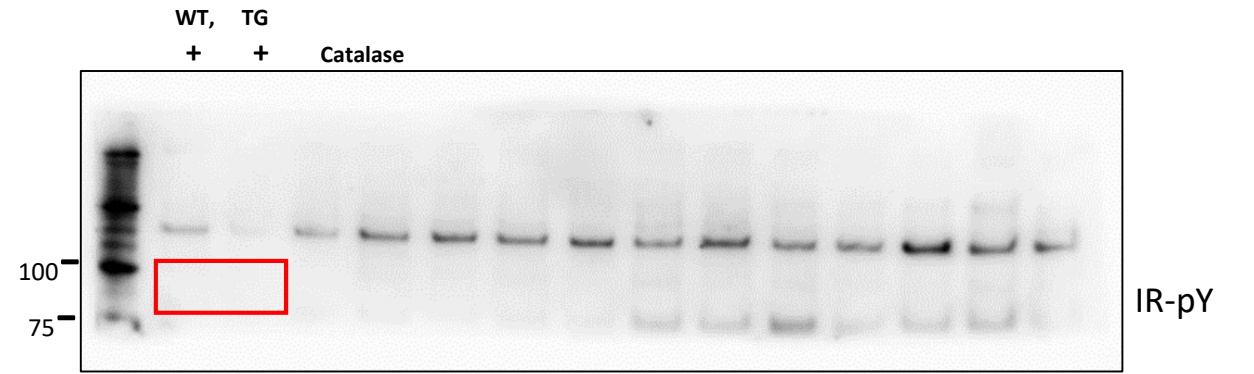
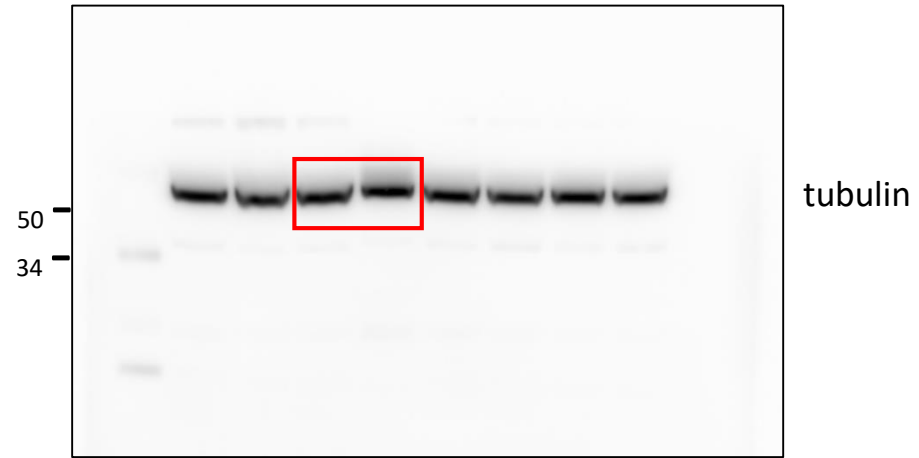
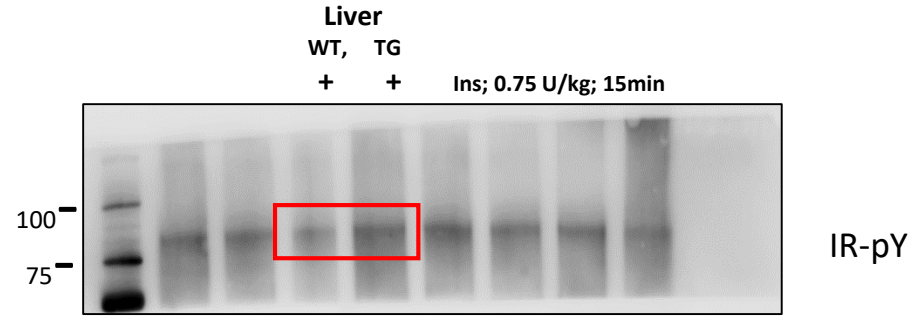
# Full unedited gel for Figure 6G



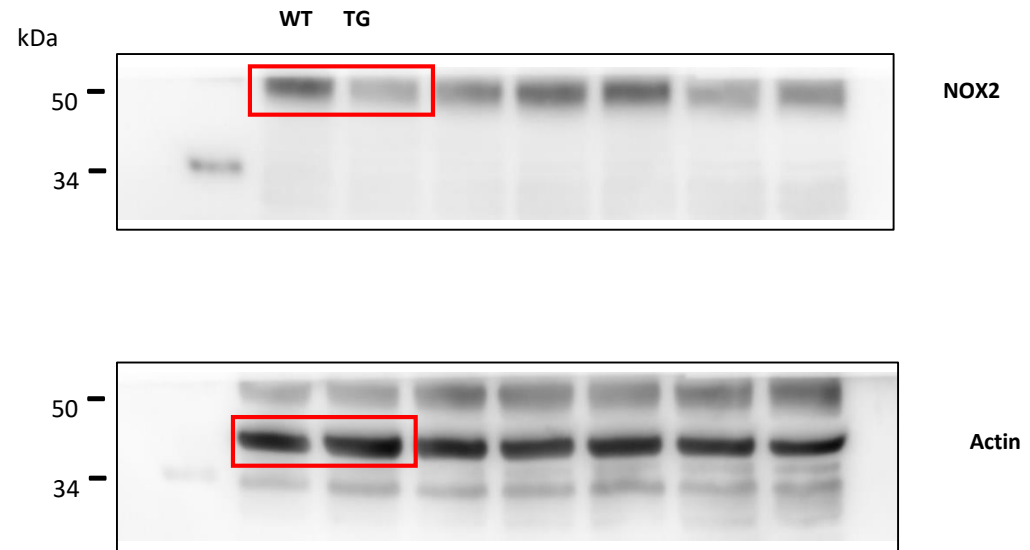
# Full unedited gel for Figure 6H



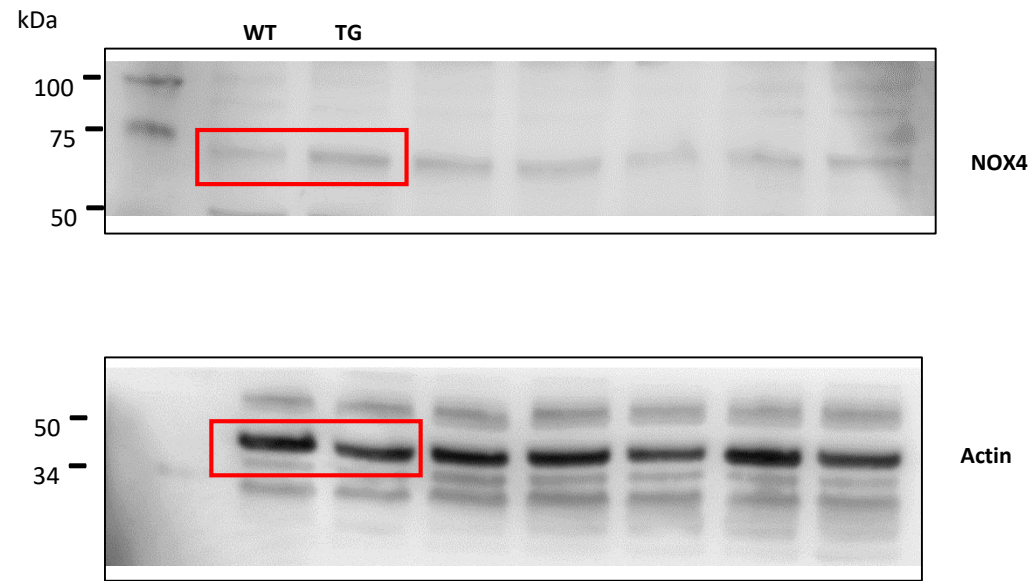
# Full unedited gel for Figure 8D



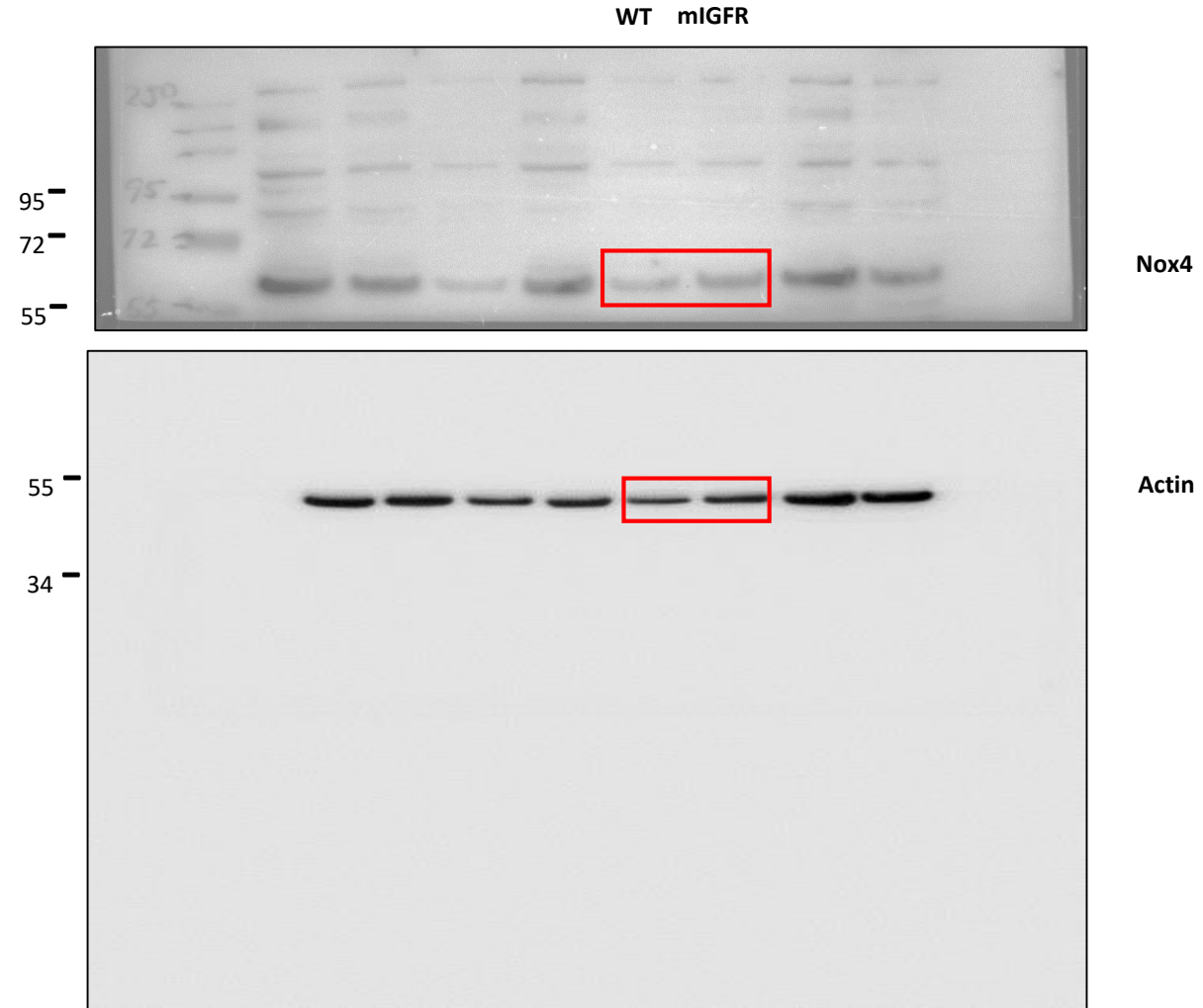
# Full unedited gel for Figure 8G



# Full unedited gel for Figure 8H

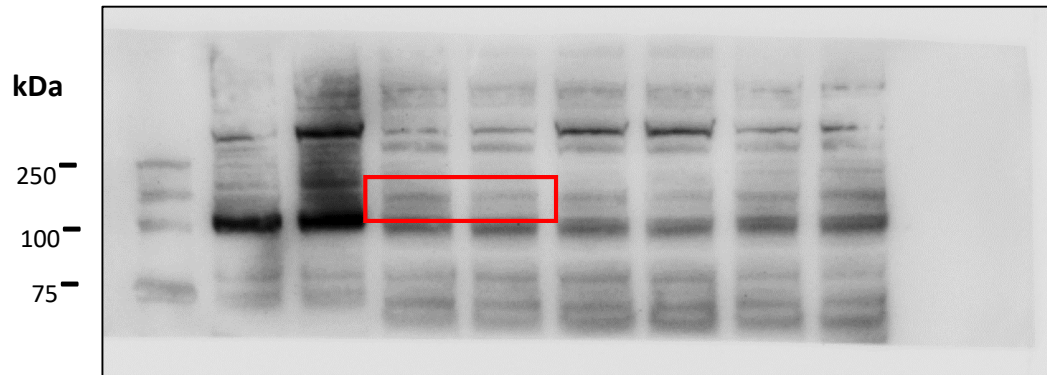


# Full unedited gel for Figure 9E



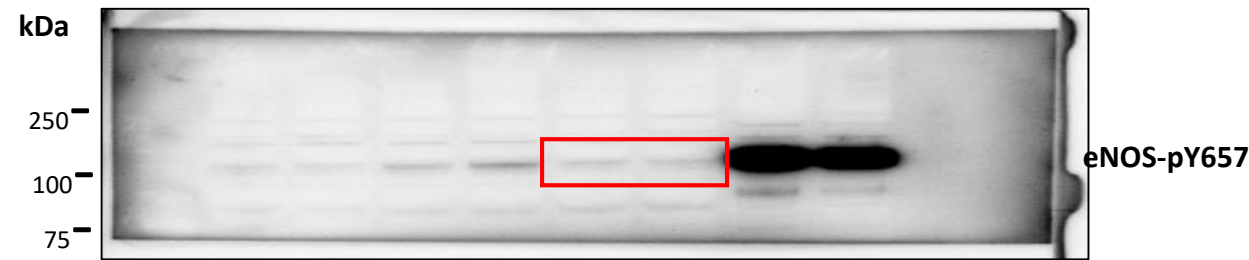
# Full unedited gel for Online Figure IIA

WT WT+Ins

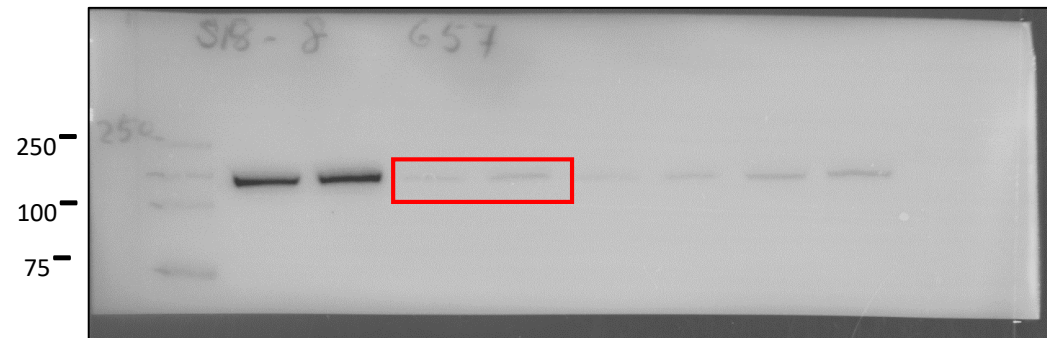


eNOS-pY657

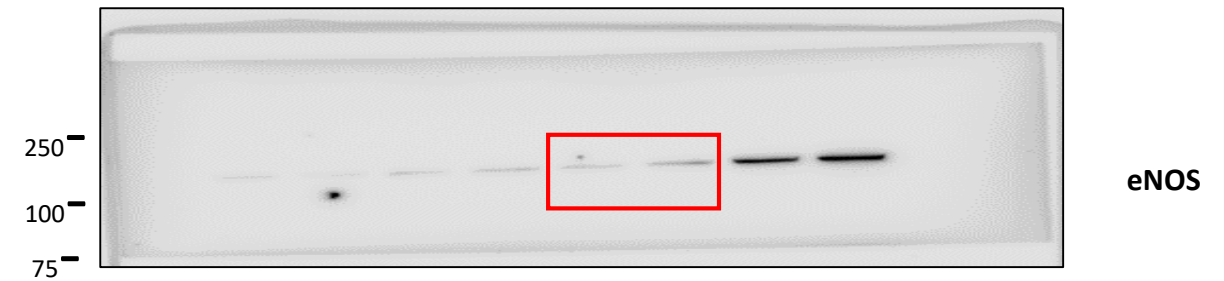
TG TG+Ins



eNOS-pY657



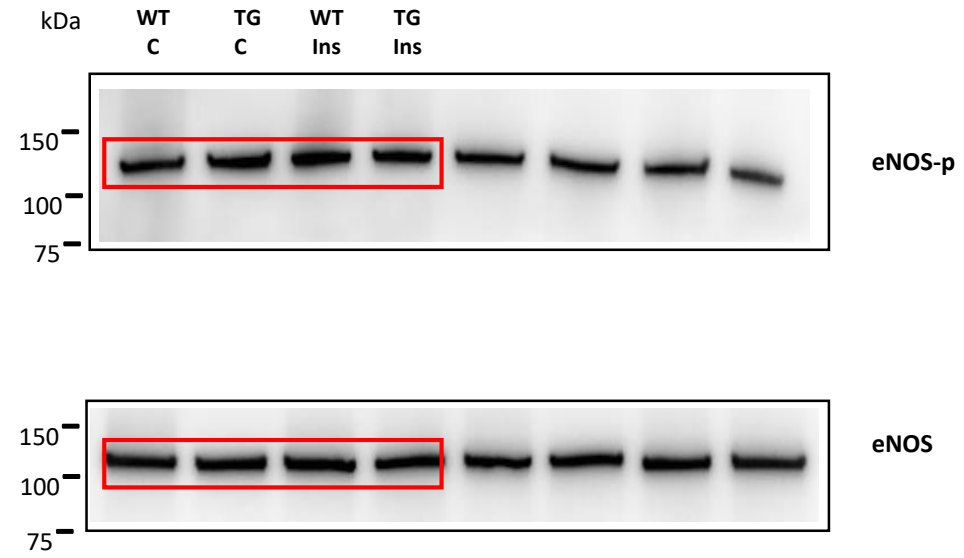
eNOS



eNOS



# Full unedited gel for Online Figure IIB



# Full unedited gel for Online Figure IIC

