

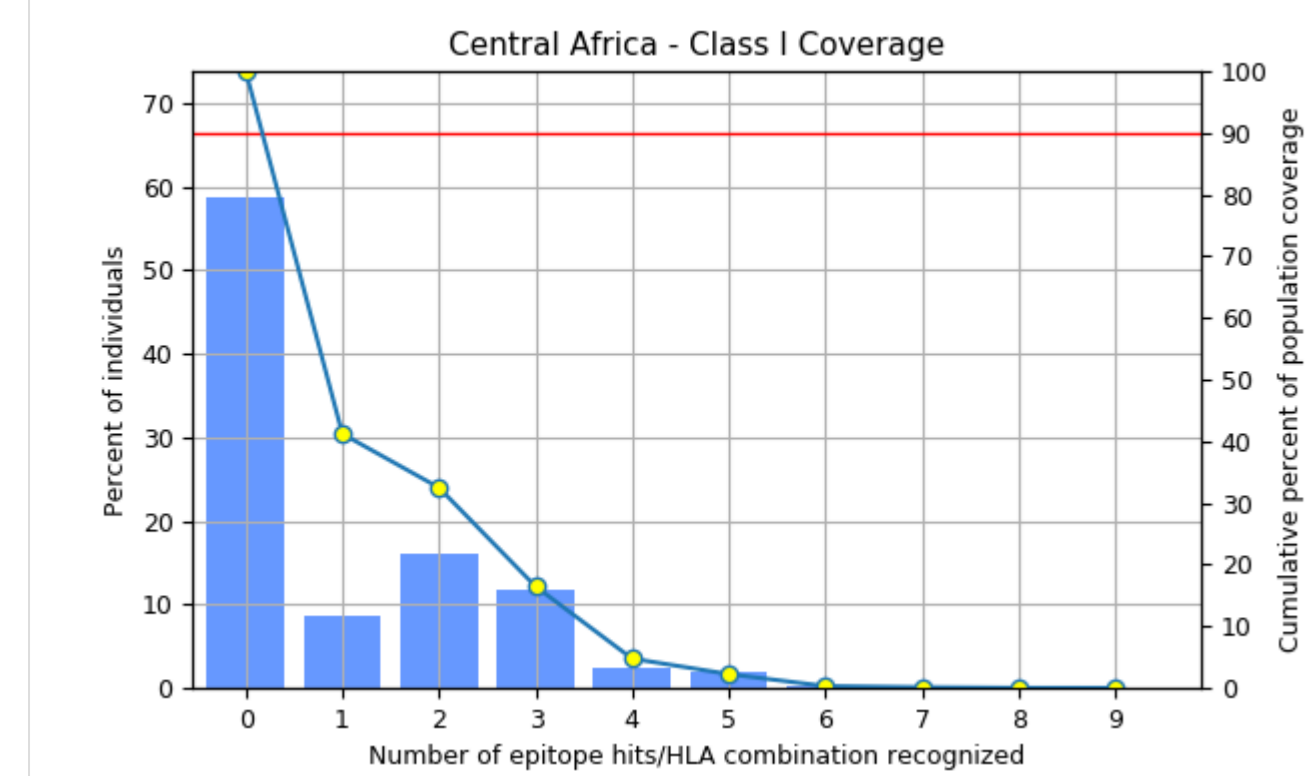
Population Coverage Calculation Result

population/area	Class I				Class II				Class combined			
	coverage ^a	average_hit ^b	pc90 ^c	coverage ^a	average_hit ^b	pc90 ^c	coverage ^a	average_hit ^b	pc90 ^c	coverage ^a	average_hit ^b	pc90 ^c
Central Africa	41.19%	0.97	0.17	99.72%	4.8	3.04	99.84%	5.77	3.44			
Central America	1.4%	0.03	0.2	90.46%	2.96	1.1	90.6%	2.99	1.14			
East Africa	46.46%	1.24	0.19	99.77%	5.24	3.3	99.88%	6.48	3.95			
East Asia	72.89%	1.53	0.37	92.44%	3.33	1.28	97.95%	4.86	2.3			
Europe	86.51%	2.9	0.74	99.98%	5.32	3.57	100.0%	8.22	5.45			
North Africa	52.35%	1.41	0.21	94.74%	3.0	1.34	97.5%	4.4	2.03			
North America	78.04%	2.32	0.46	99.99%	5.47	3.58	100.0%	7.79	5.07			
Northeast Asia	48.93%	0.97	0.19	98.16%	4.62	2.49	99.02%	5.6	3.06			
Oceania	71.42%	1.41	0.35	98.79%	5.14	2.86	99.65%	6.55	3.88			
South Africa	40.03%	0.8	0.17	0.0%	0.0	0.0	40.03%	0.8	0.17			
South America	53.26%	1.2	0.21	99.71%	5.63	3.62	99.86%	6.83	4.23			
South Asia	47.74%	1.06	0.19	99.82%	4.97	3.19	99.91%	6.03	3.69			
Southeast Asia	63.12%	1.33	0.27	91.01%	2.85	1.08	96.69%	4.18	1.93			
Southeast Asia	53.62%	1.42	0.22	95.63%	3.03	1.37	97.97%	4.45	2.04			
West Africa	48.73%	1.26	0.2	99.8%	4.99	3.23	99.95%	6.25	3.88			
West Asia	71.41%	2.01	0.35	80.46%	1.88	0.61	94.42%	3.9	1.51			
Average	54.69	1.37	0.28	90.04	3.95	2.22	94.58	5.32	3.39			
Standard deviation	19.33	0.63	0.15	23.81	1.53	1.18	14.3	1.81	1.42			

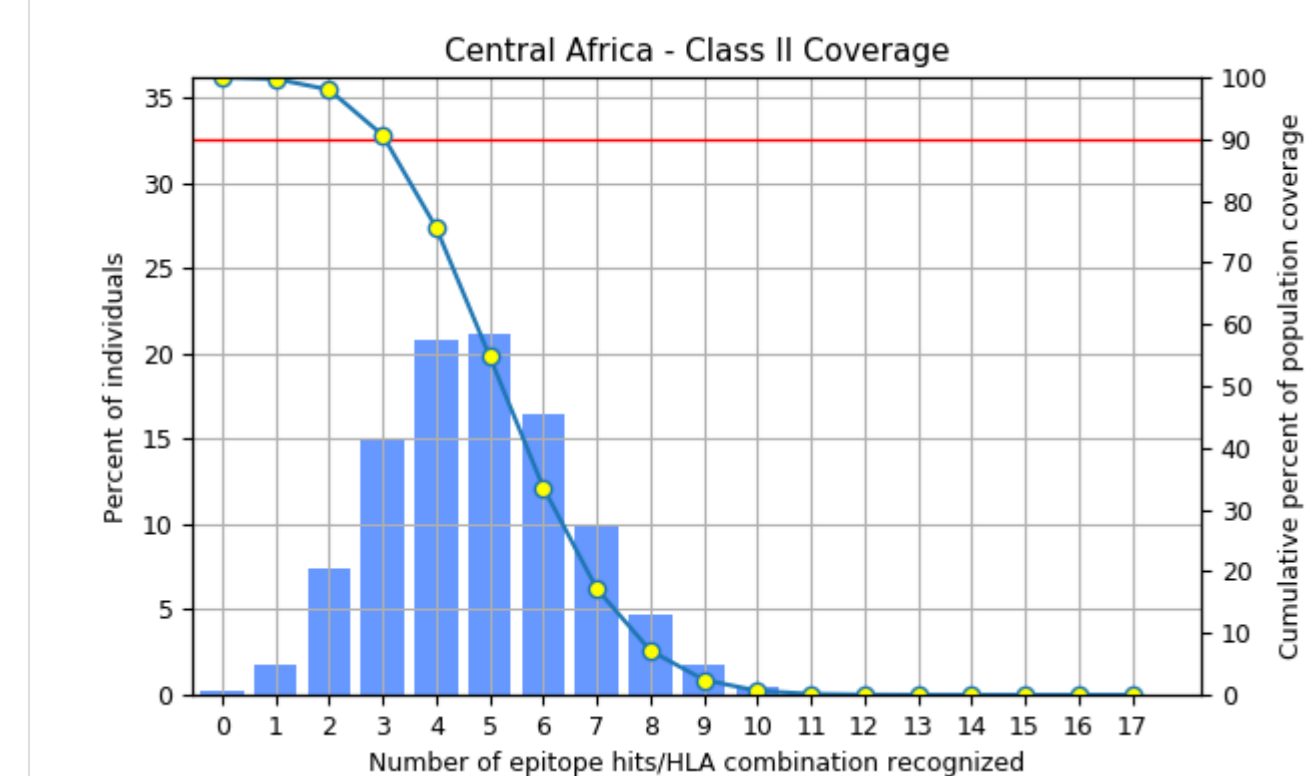
^a projected population coverage
^b average number of epitope hits / HLA combinations recognized by the population
^c minimum number of epitope hits / HLA combinations recognized by 90% of the population

Population: Central Africa

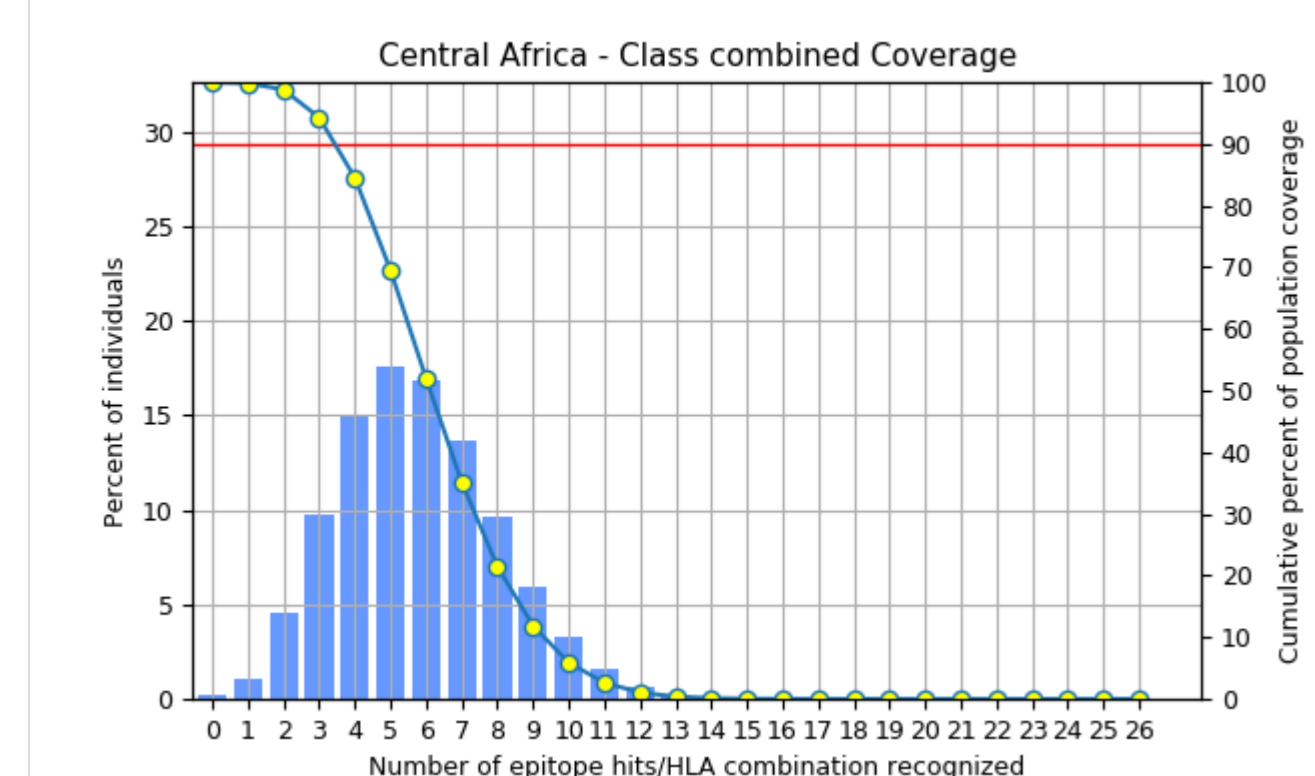
MHC class	Coverage	Average hit	PC90
I	41.19%	0.97	0.17

View coverage of individual epitope in Central Africa [Back to top](#)

MHC class	Coverage	Average hit	PC90
II	99.72%	4.8	3.04

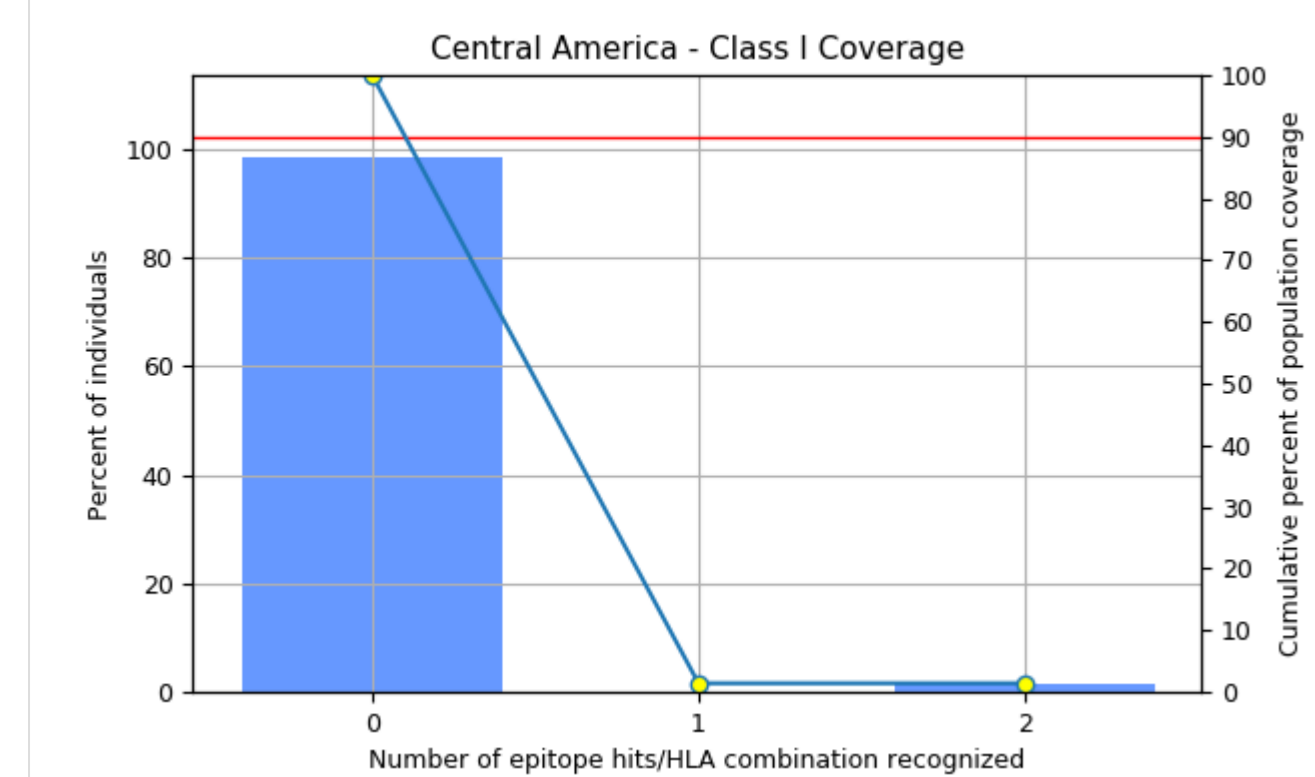
View coverage of individual epitope in Central Africa [Back to top](#)

MHC class	Coverage	Average hit	PC90
combined	99.84%	5.77	3.44

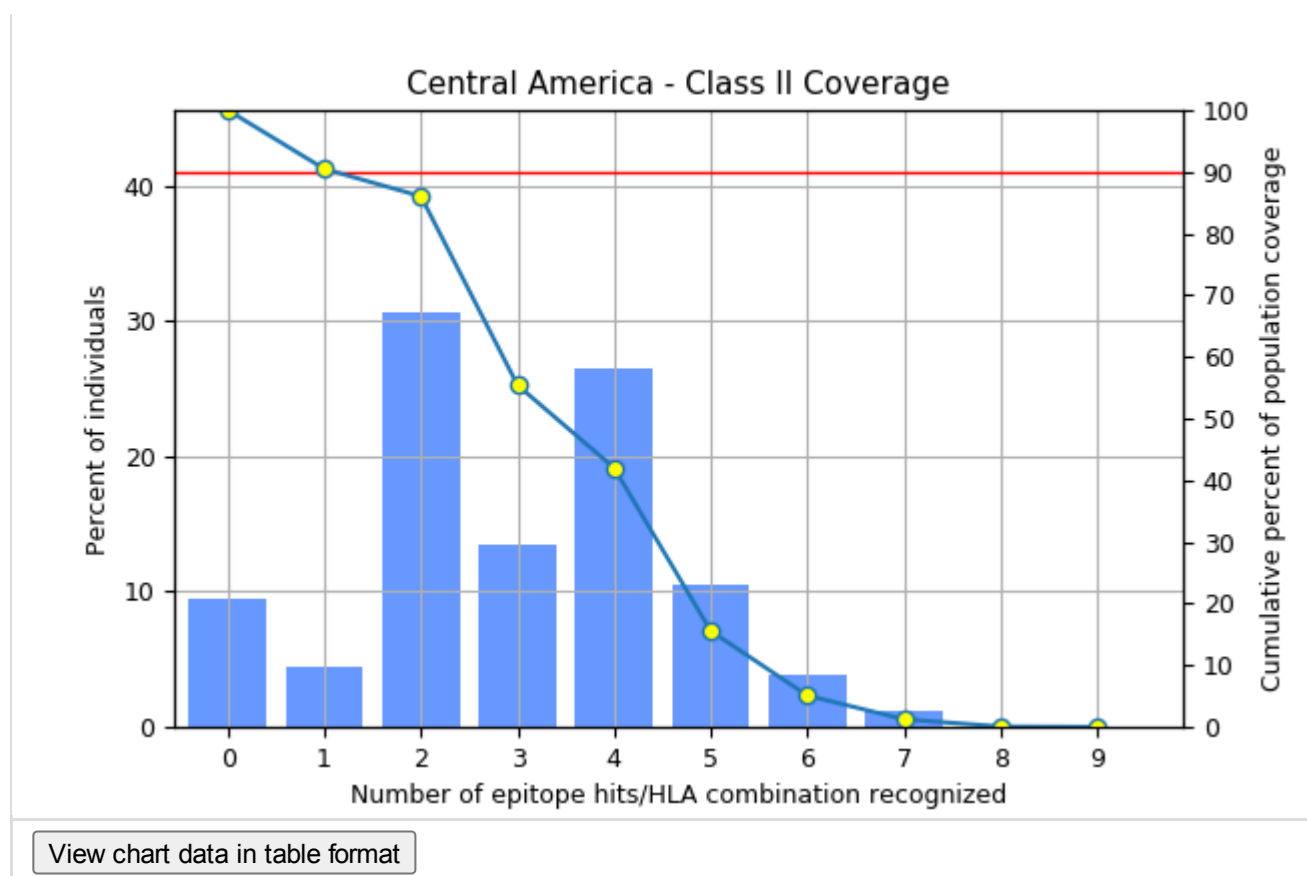
View coverage of individual epitope in Central Africa [Back to top](#)

Population: Central America

MHC class	Coverage	Average hit	PC90
I	1.4%	0.03	0.2

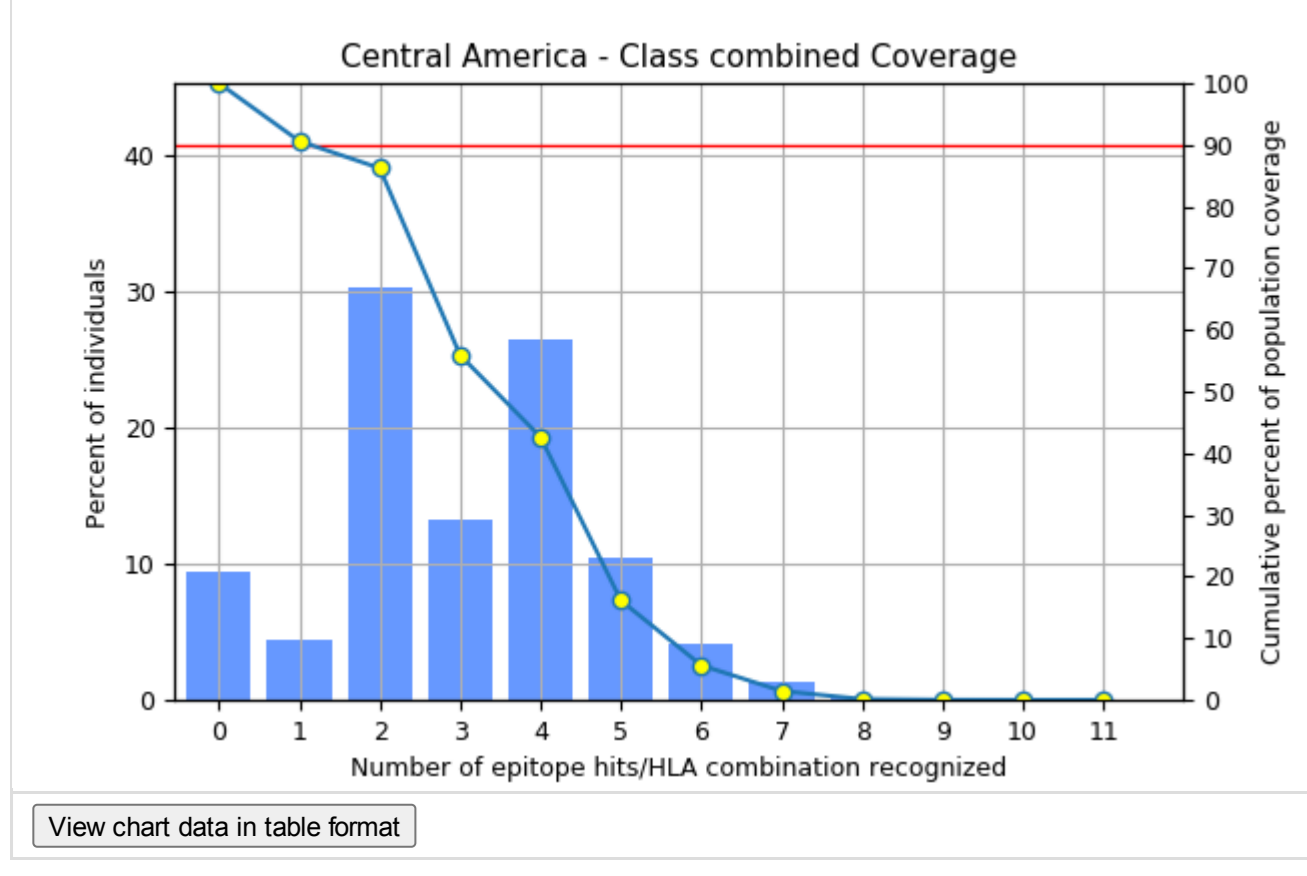
View coverage of individual epitope in Central America [Back to top](#)

MHC class	Coverage	Average hit	PC90
II	90.46%	2.96	1.1



View coverage of individual epitope in Central America [Back to top](#)

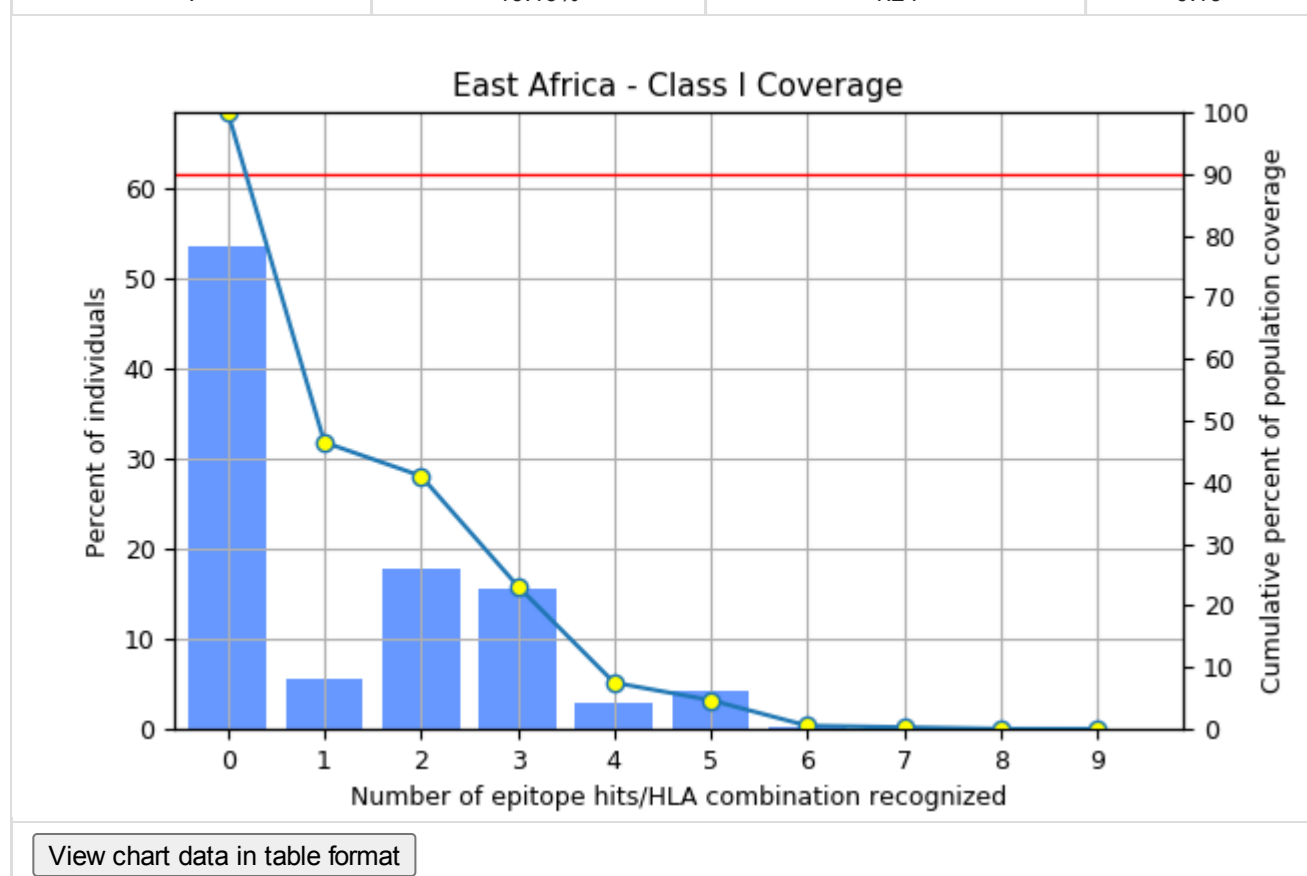
MHC class	Coverage	Average hit	PC90
combined	90.6%	2.99	1.14



View coverage of individual epitope in Central America [Back to top](#)

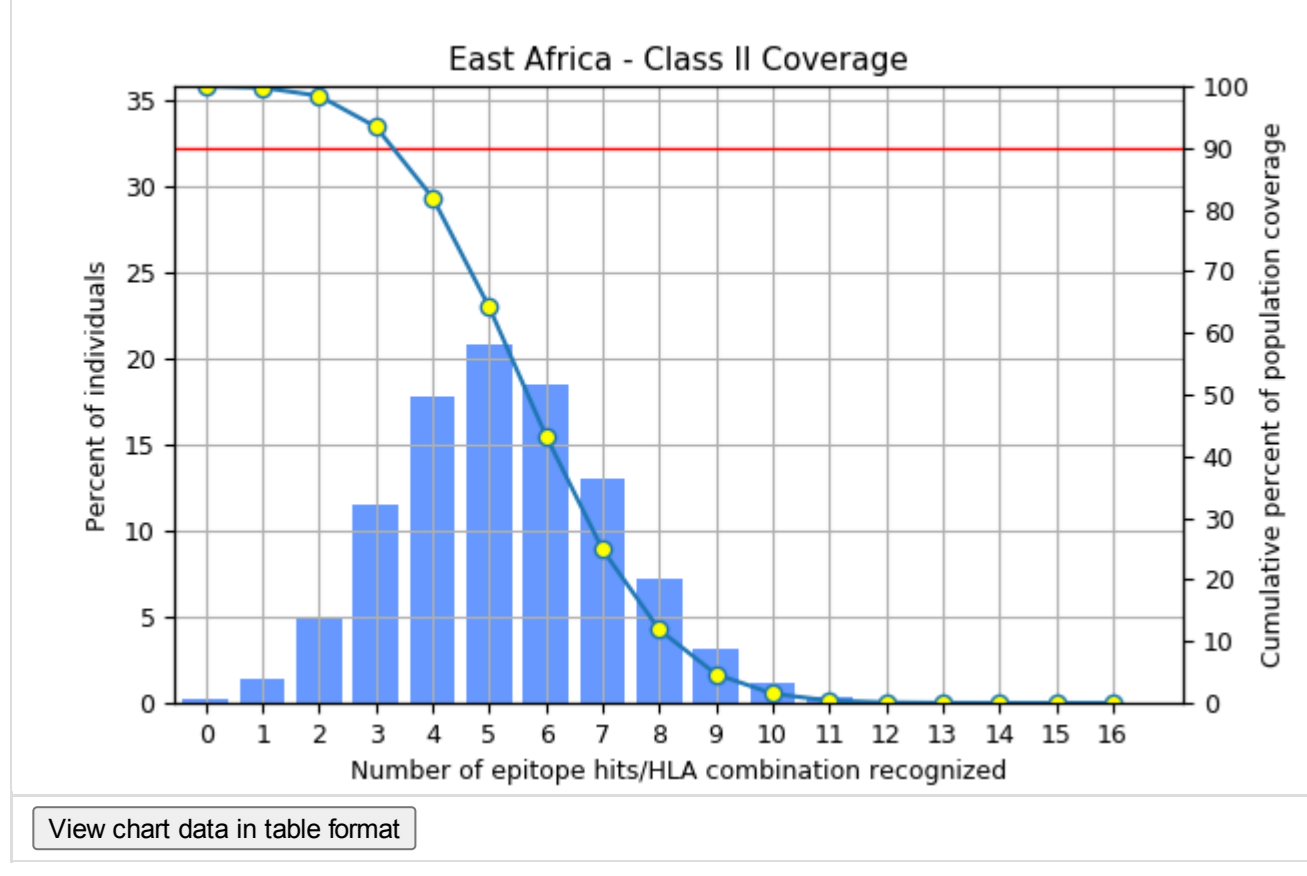
Population: East Africa

MHC class	Coverage	Average hit	PC90
I	46.46%	1.24	0.19



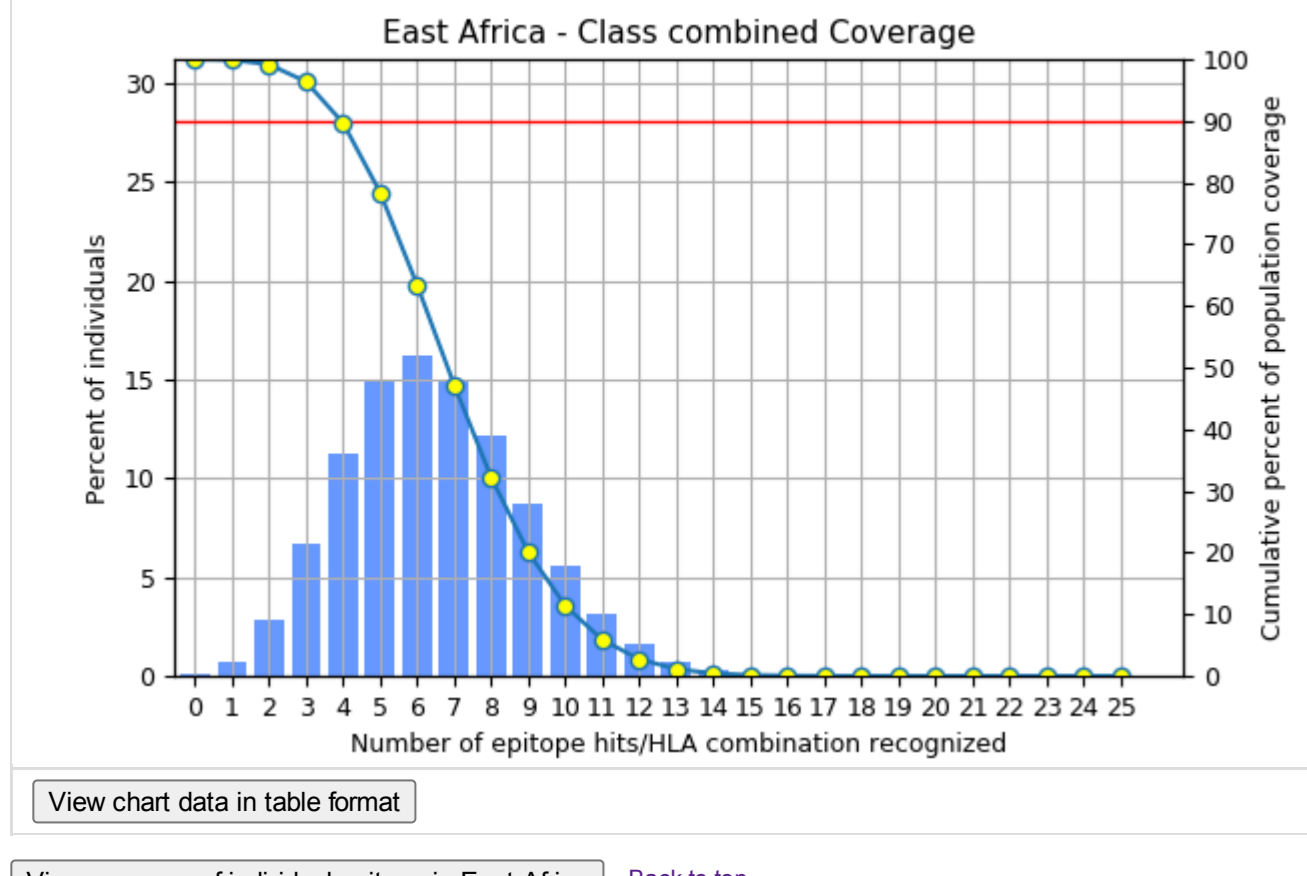
View coverage of individual epitope in East Africa [Back to top](#)

MHC class	Coverage	Average hit	PC90
II	99.77%	5.24	3.3



View coverage of individual epitope in East Africa [Back to top](#)

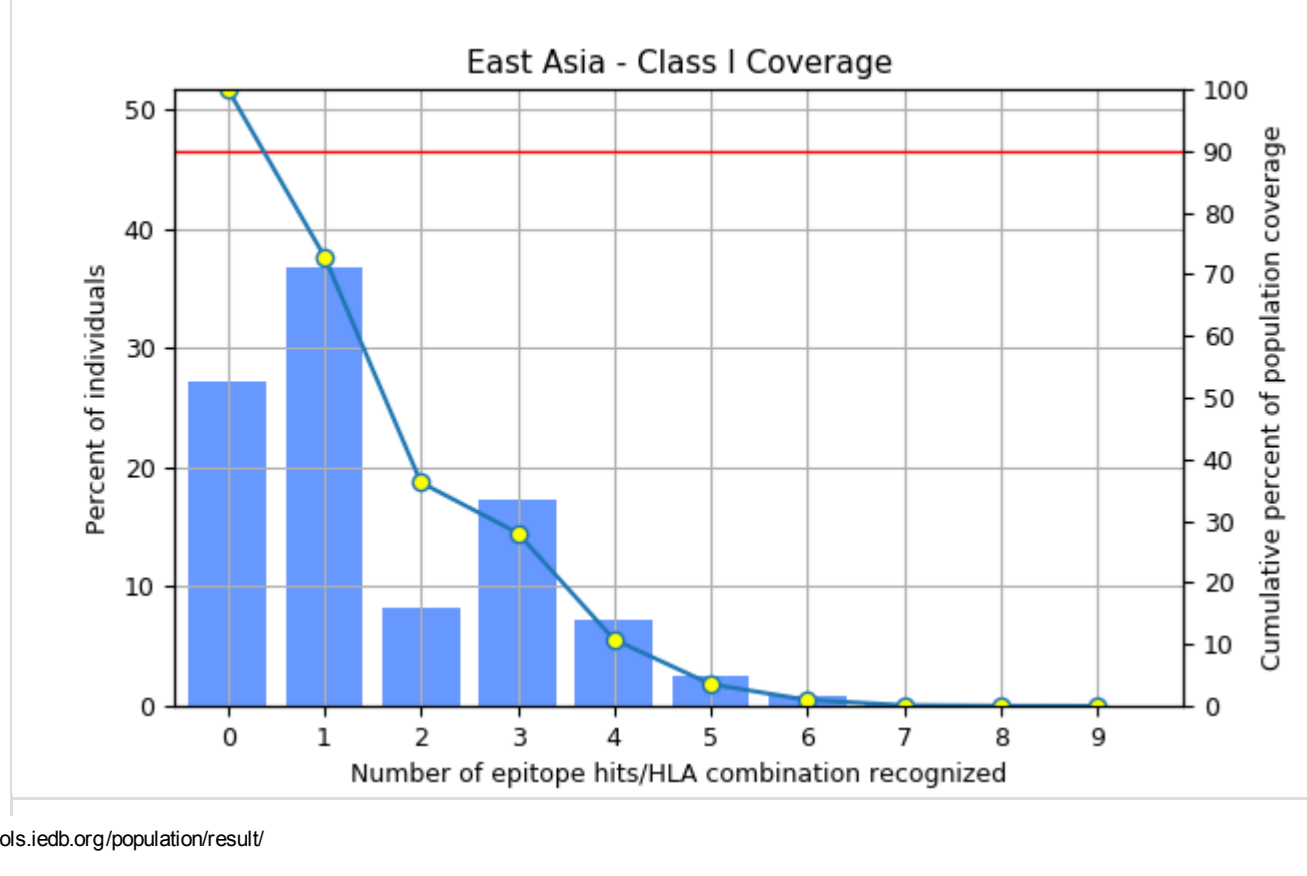
MHC class	Coverage	Average hit	PC90
combined	99.88%	6.48	3.95



View coverage of individual epitope in East Africa [Back to top](#)

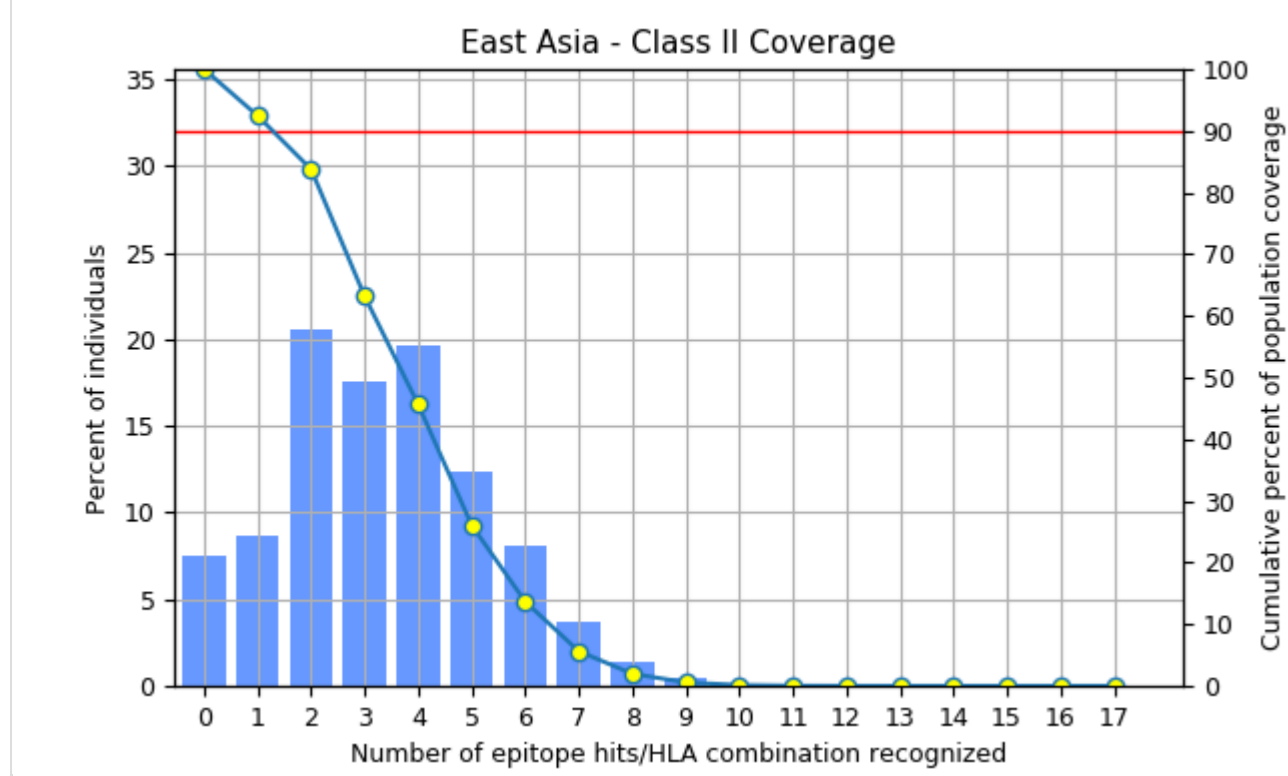
Population: East Asia

MHC class	Coverage	Average hit	PC90
I	72.89%	1.53	0.37

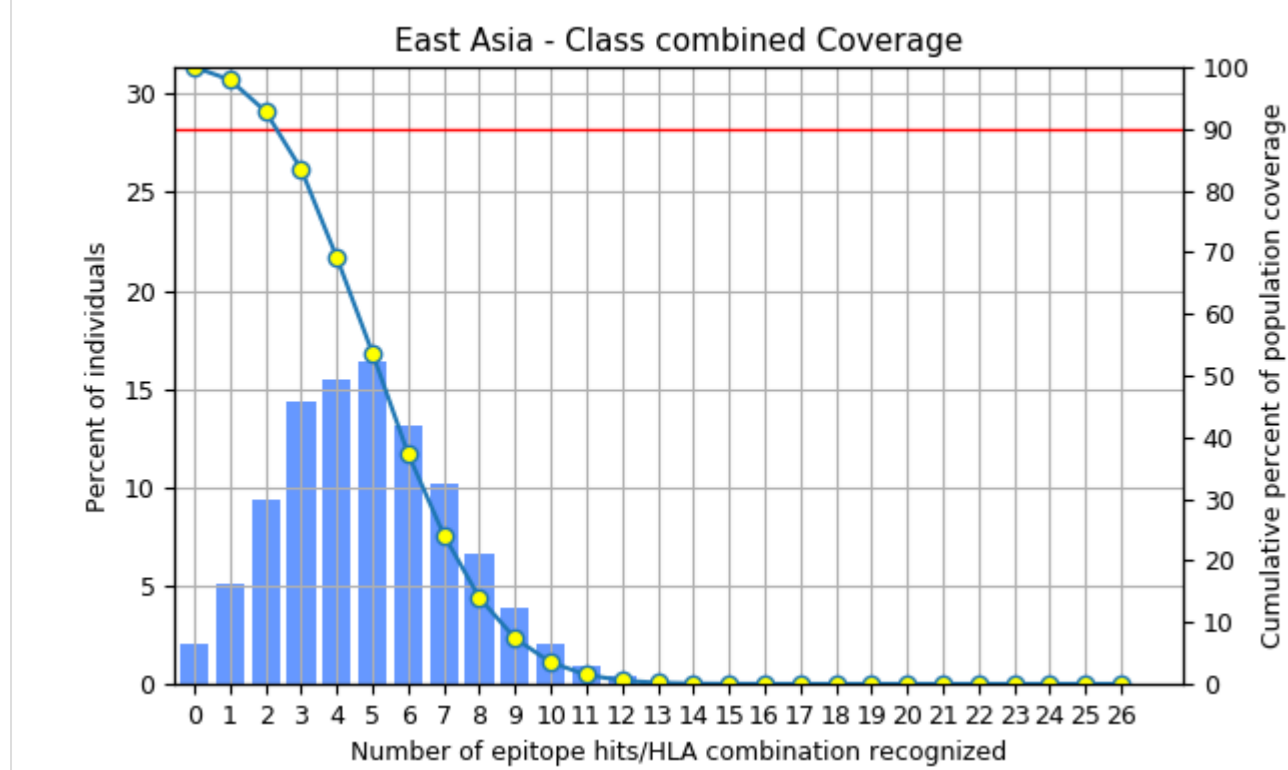


[View chart data in table format](#)View coverage of individual epitope in East Asia [Back to top](#)

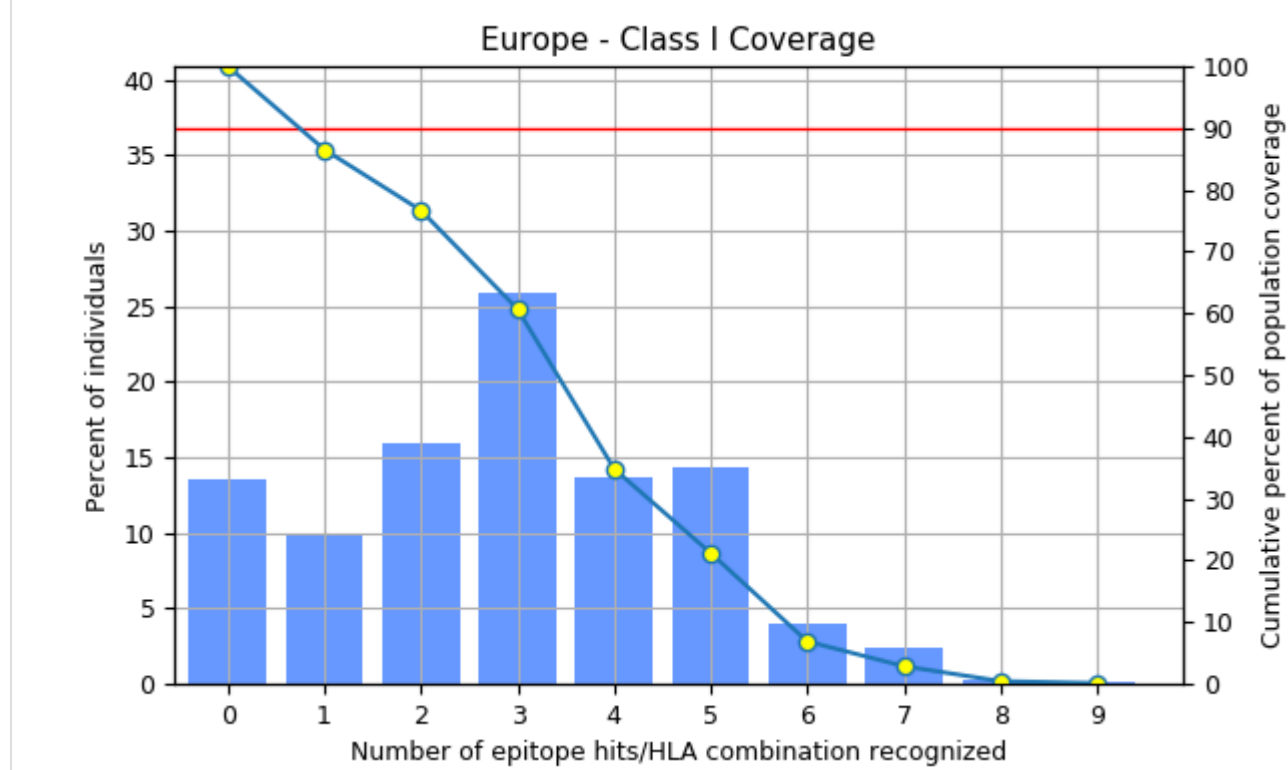
MHC class	Coverage	Average hit	PC90
II	92.44%	3.33	1.28

[View chart data in table format](#)View coverage of individual epitope in East Asia [Back to top](#)

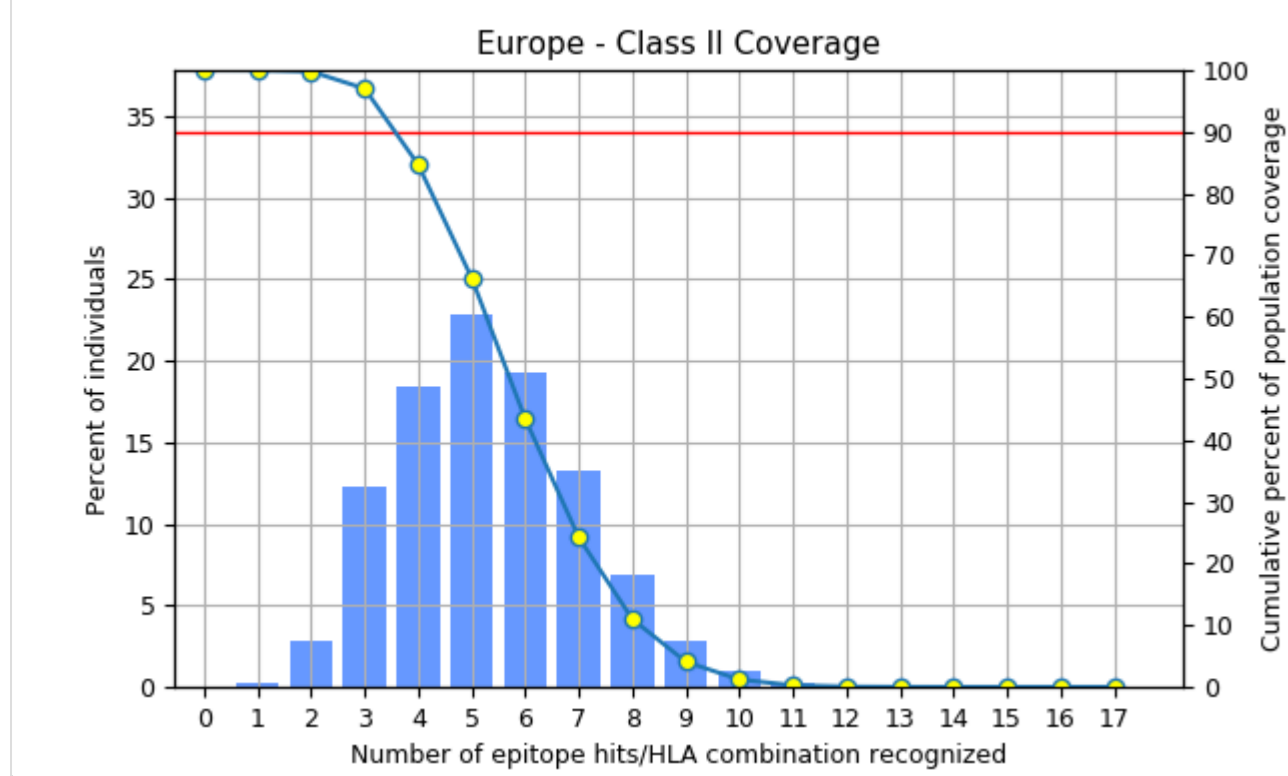
MHC class	Coverage	Average hit	PC90
combined	97.95%	4.86	2.3

[View chart data in table format](#)View coverage of individual epitope in East Asia [Back to top](#)**Population: Europe**

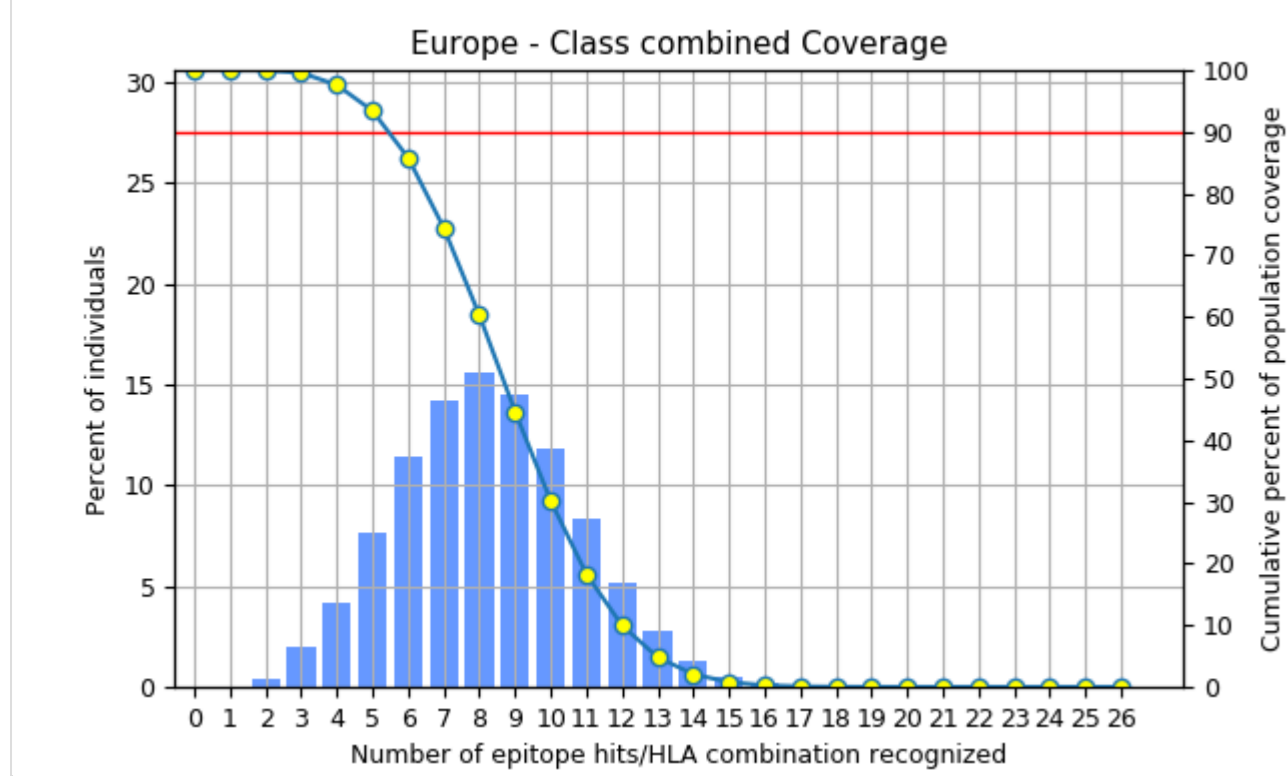
MHC class	Coverage	Average hit	PC90
I	86.51%	2.9	0.74

[View chart data in table format](#)View coverage of individual epitope in Europe [Back to top](#)

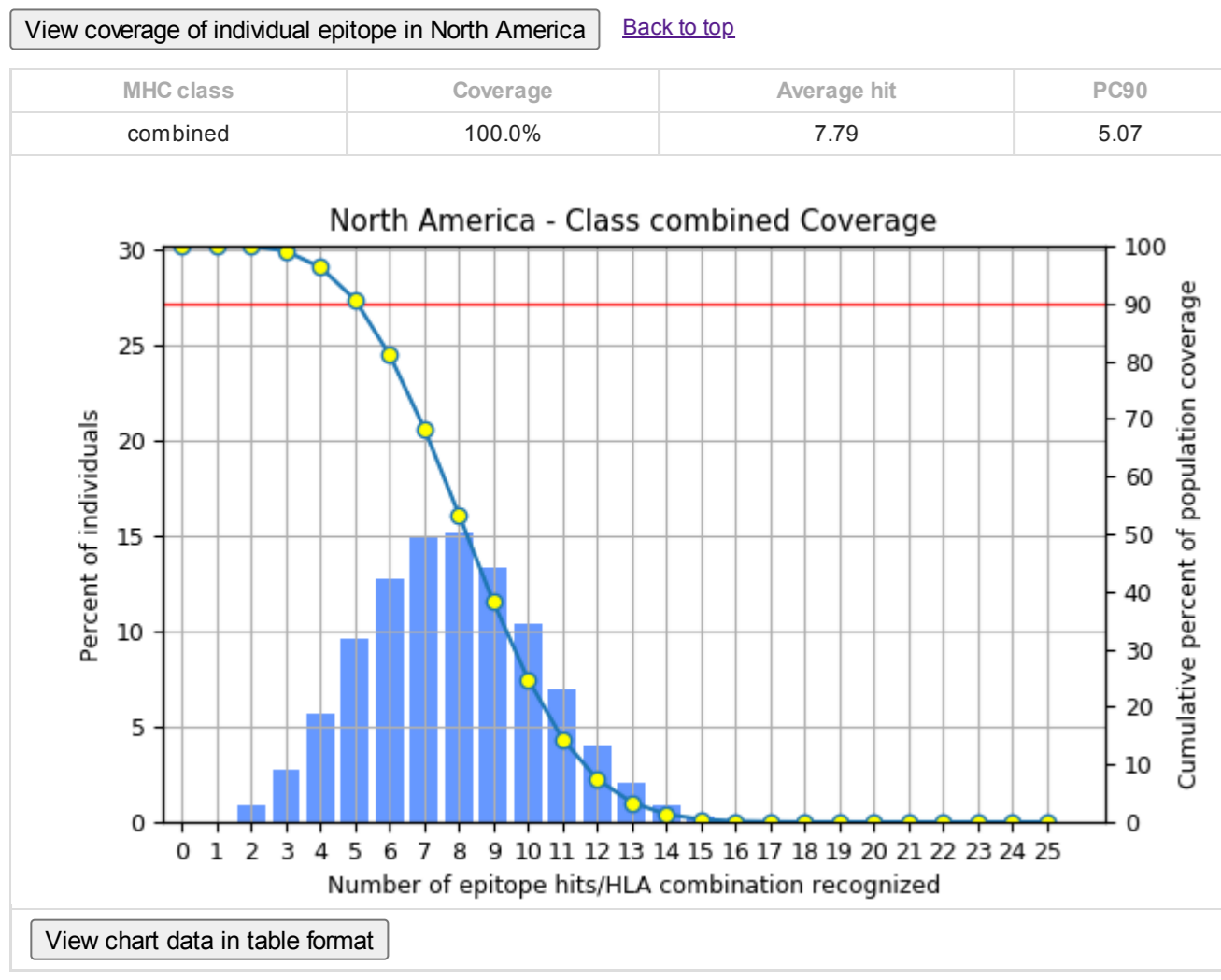
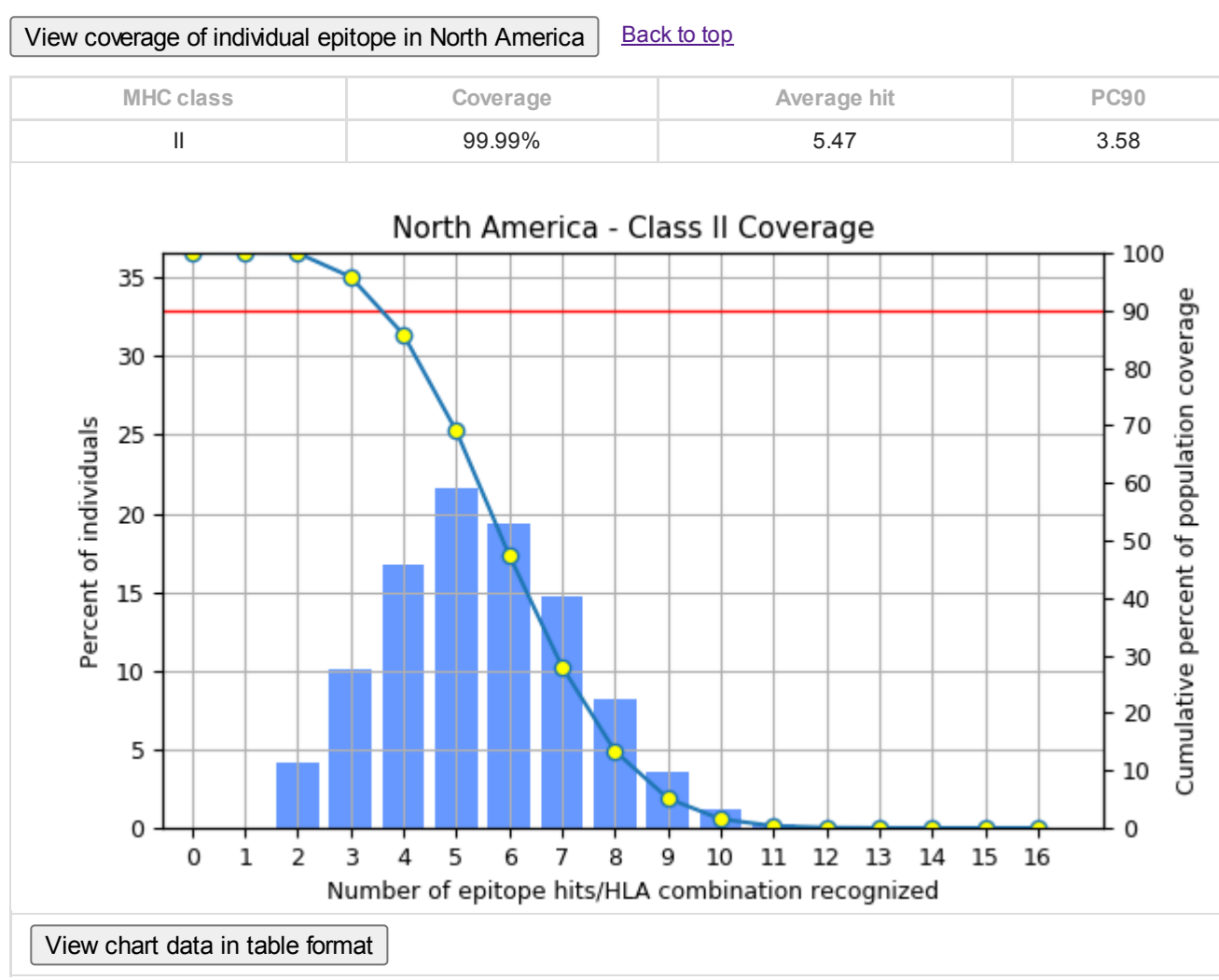
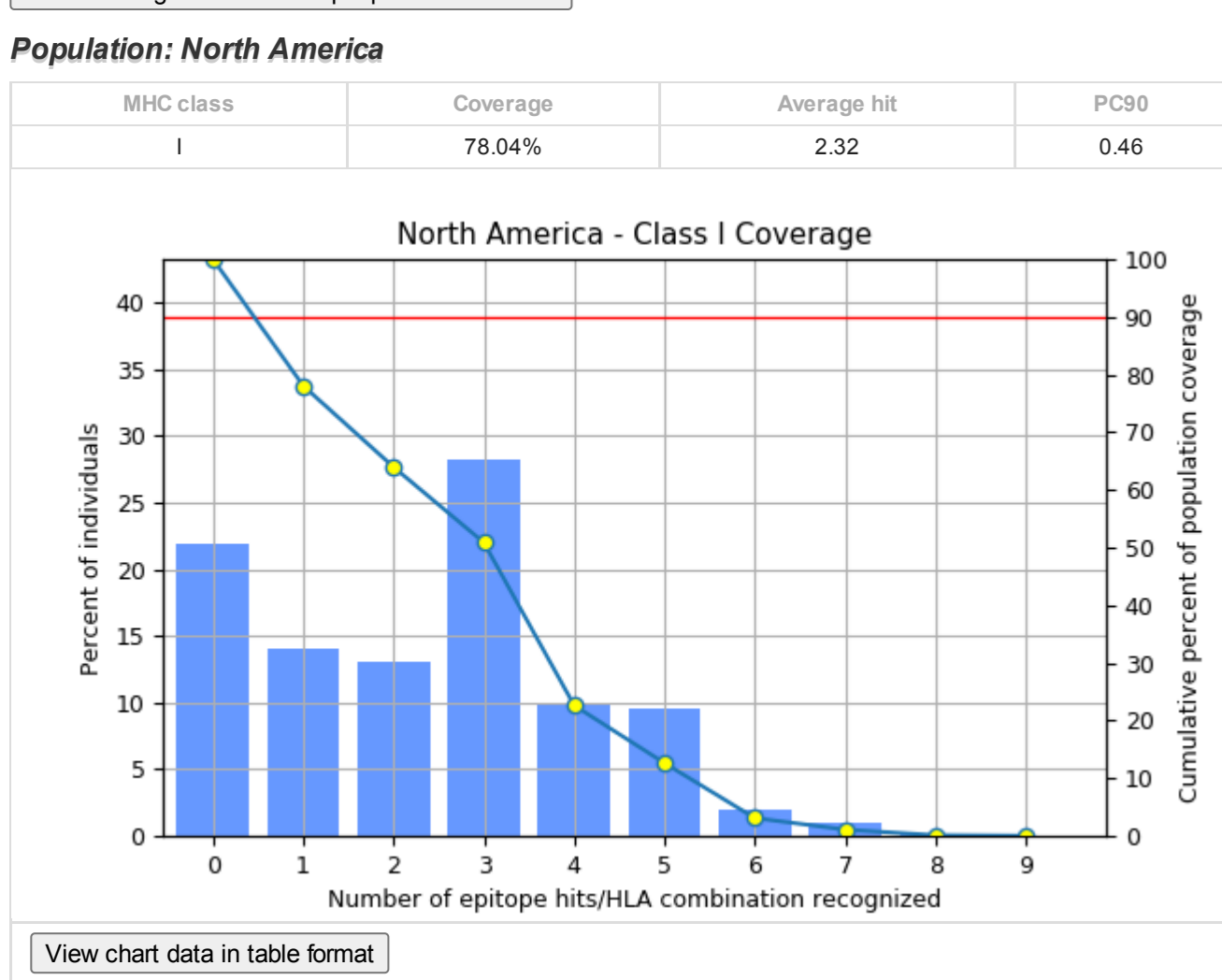
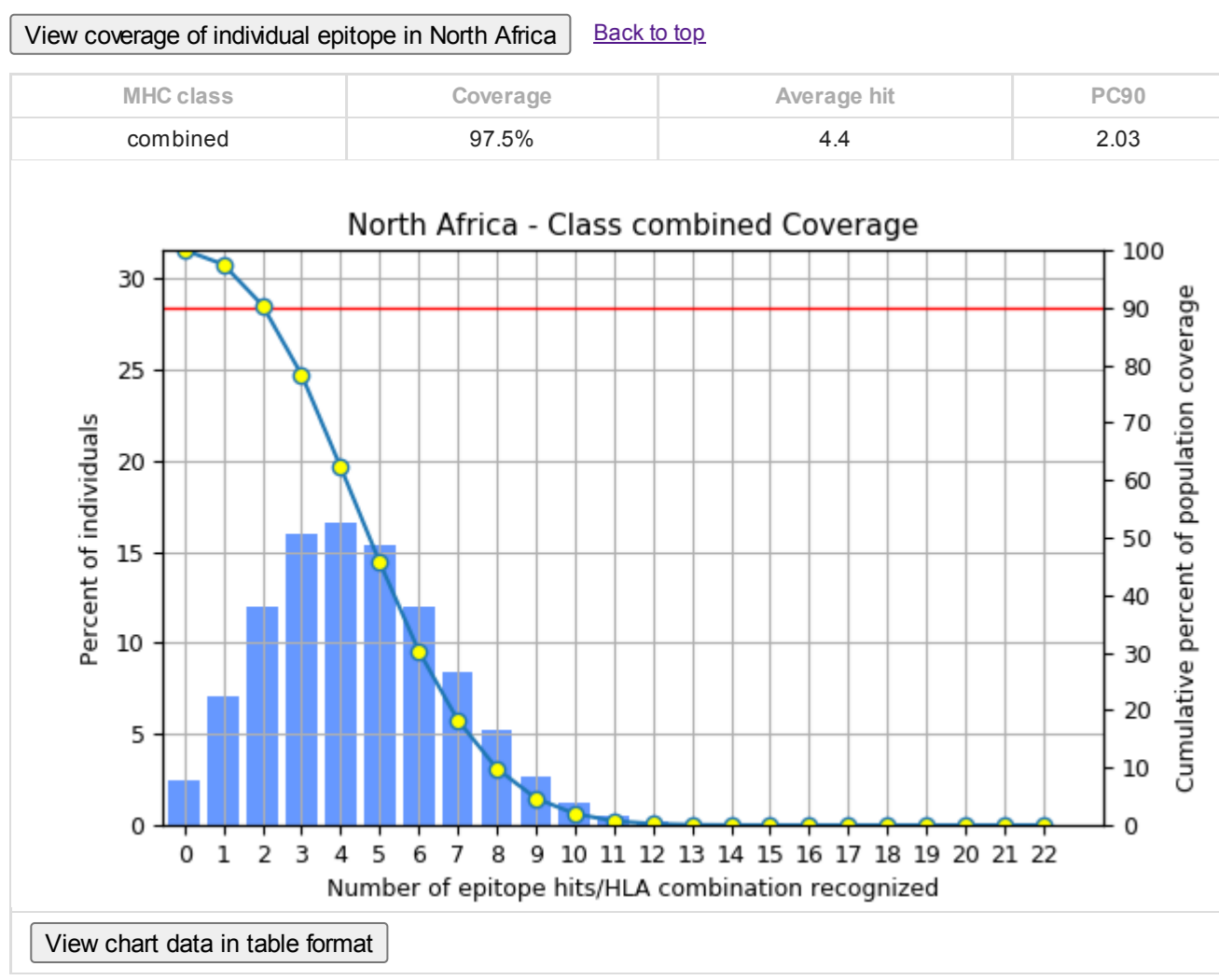
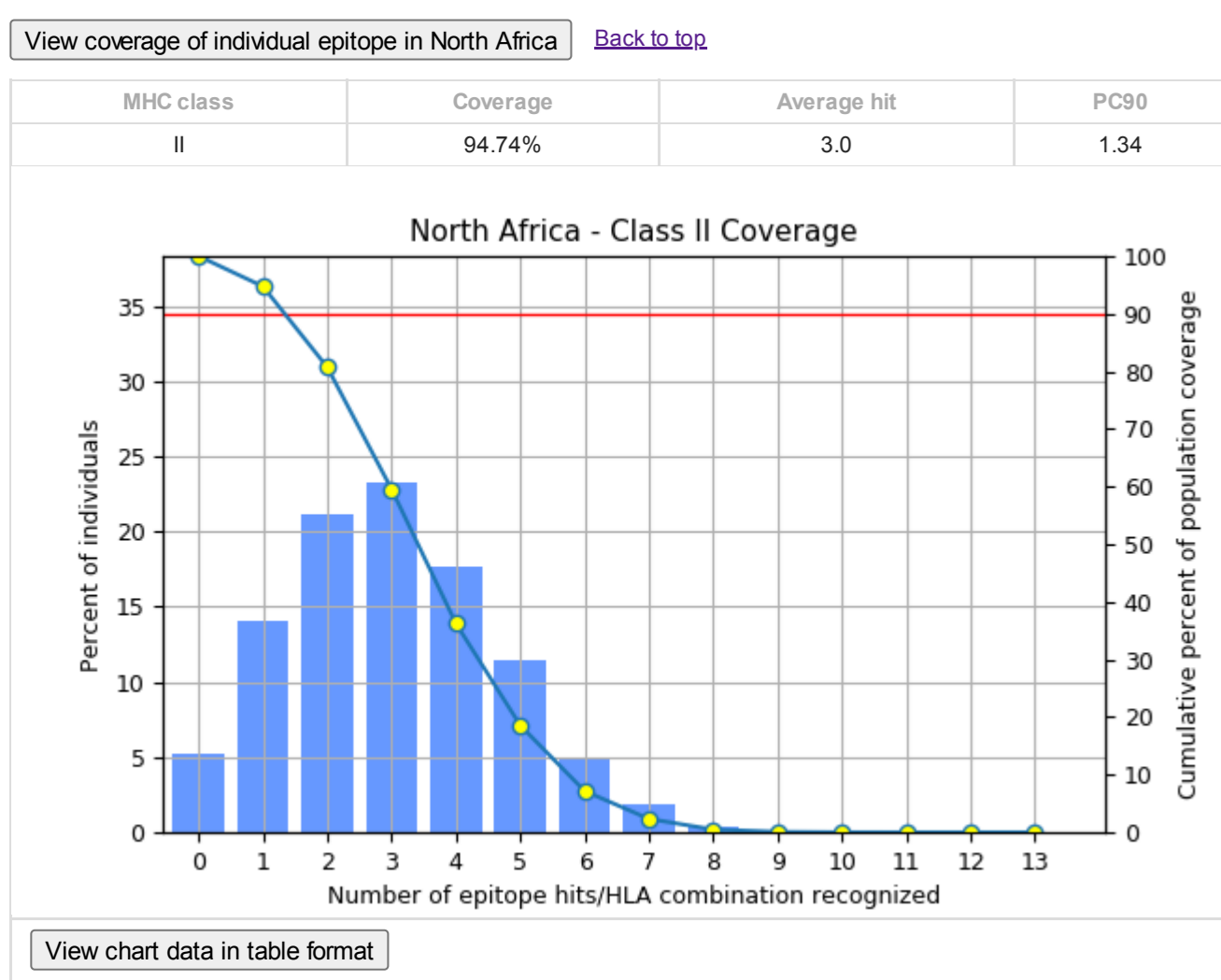
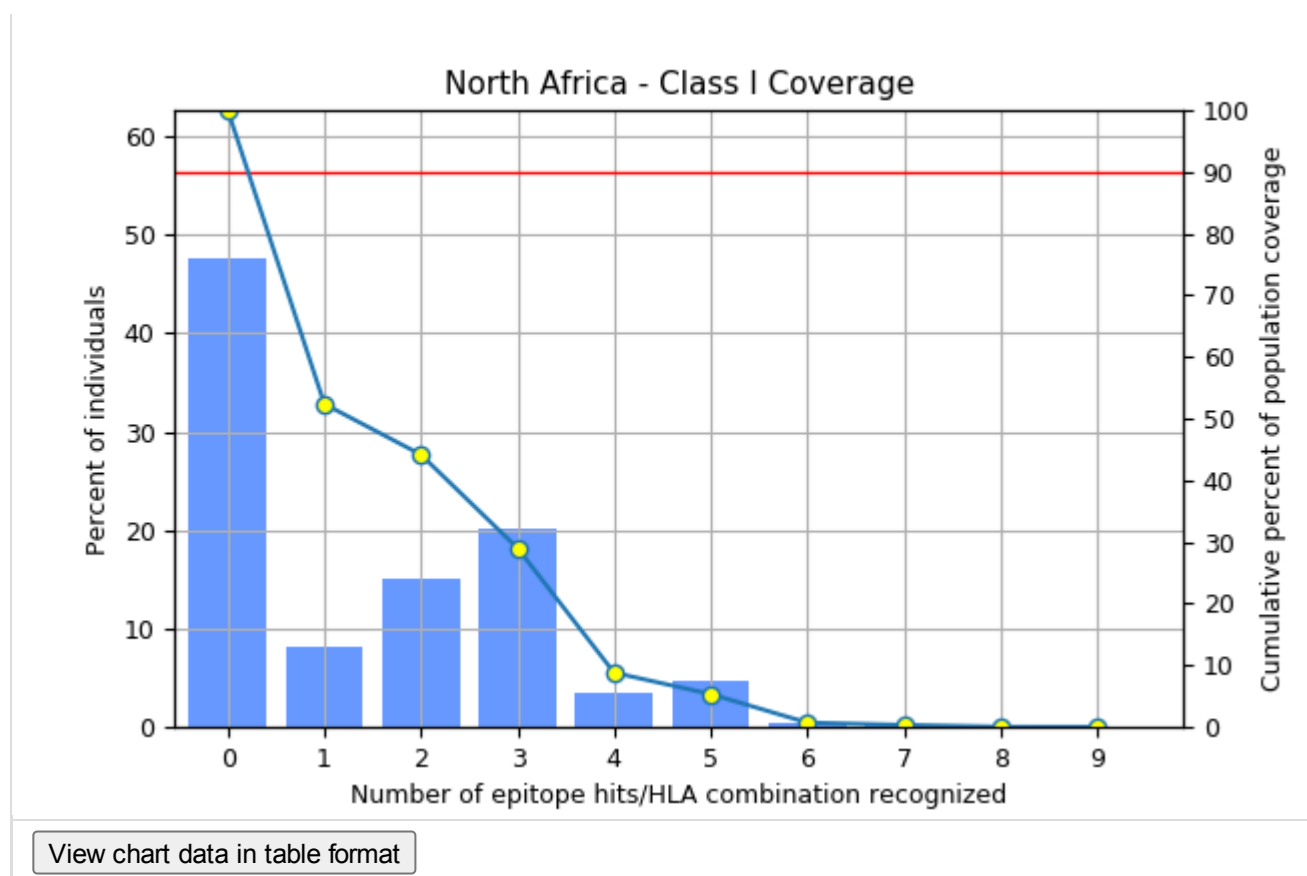
MHC class	Coverage	Average hit	PC90
II	99.98%	5.32	3.57

[View chart data in table format](#)View coverage of individual epitope in Europe [Back to top](#)

MHC class	Coverage	Average hit	PC90
combined	100.0%	8.22	5.45

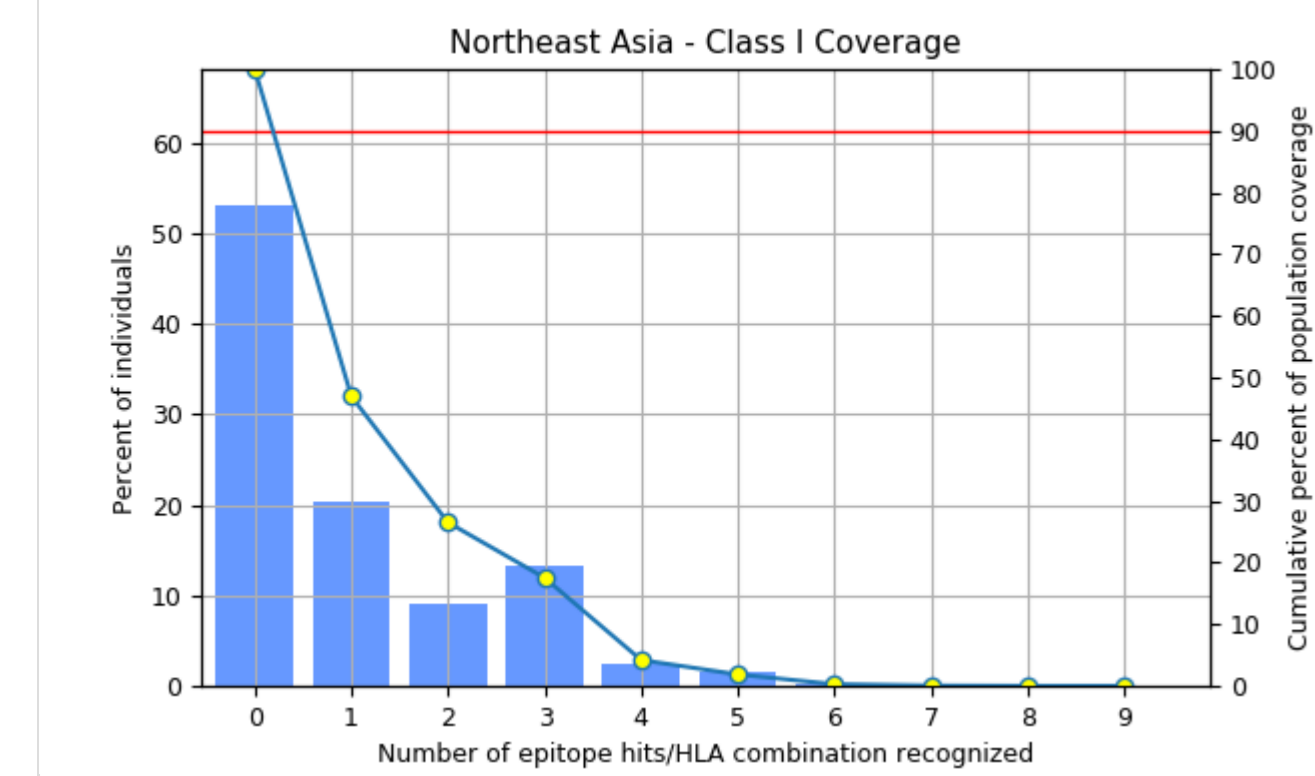
[View chart data in table format](#)View coverage of individual epitope in Europe [Back to top](#)**Population: North Africa**

MHC class	Coverage	Average hit	PC90
I	52.35%	1.41	0.21

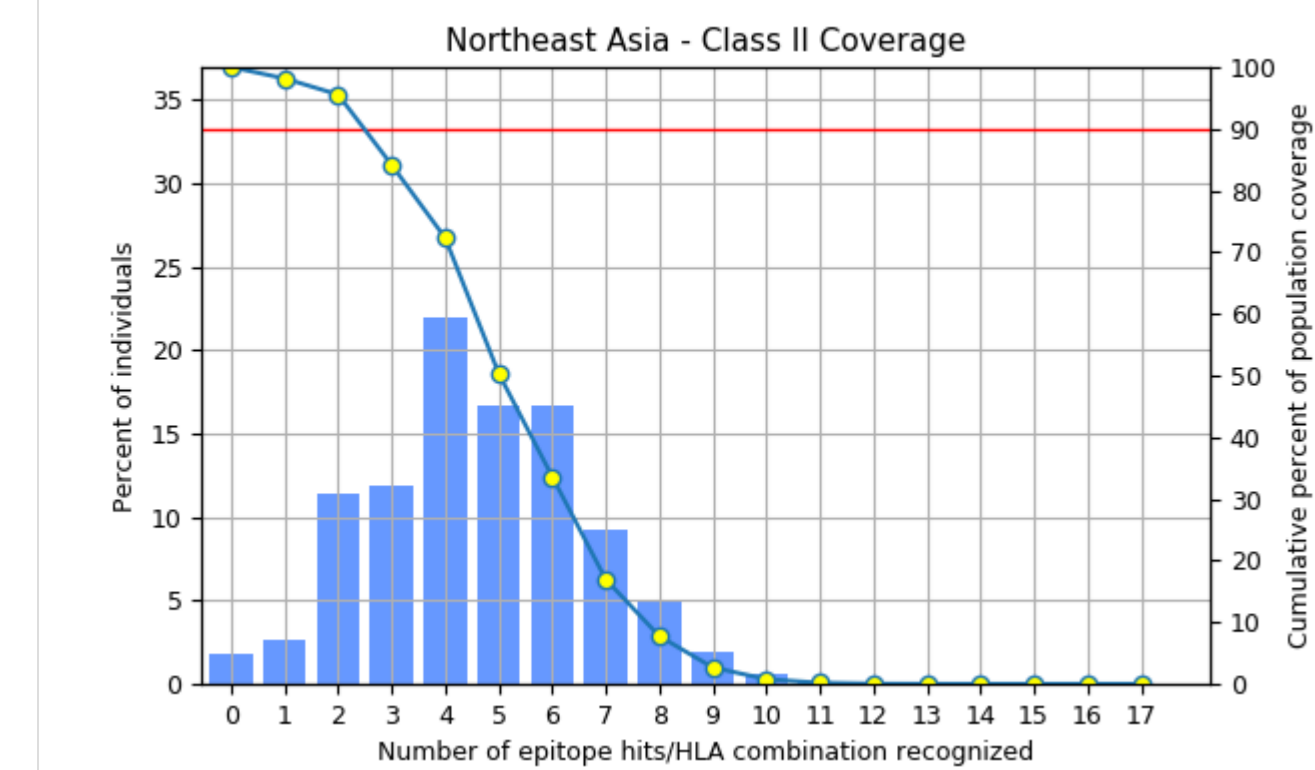


View coverage of individual epitope in North America [Back to top](#)**Population: Northeast Asia**

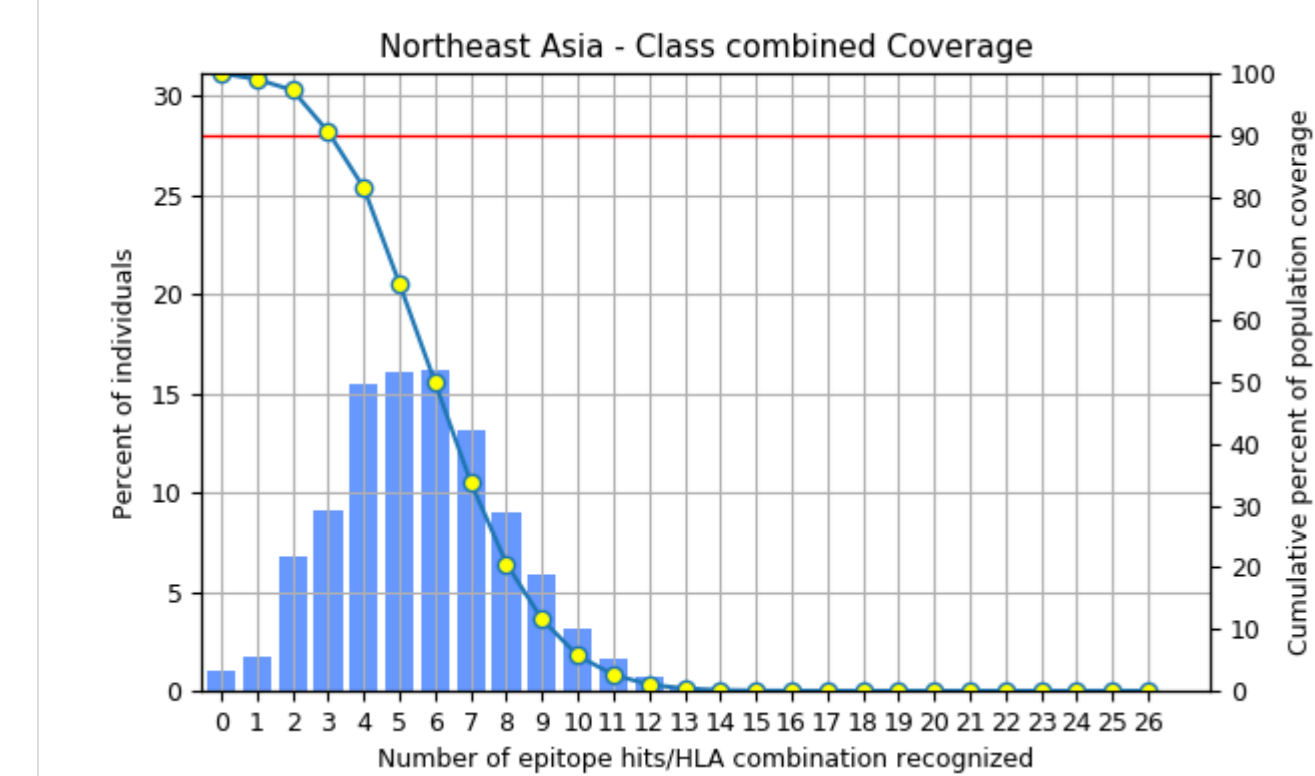
MHC class	Coverage	Average hit	PC90
I	46.93%	0.97	0.19

[View chart data in table format](#)View coverage of individual epitope in Northeast Asia [Back to top](#)

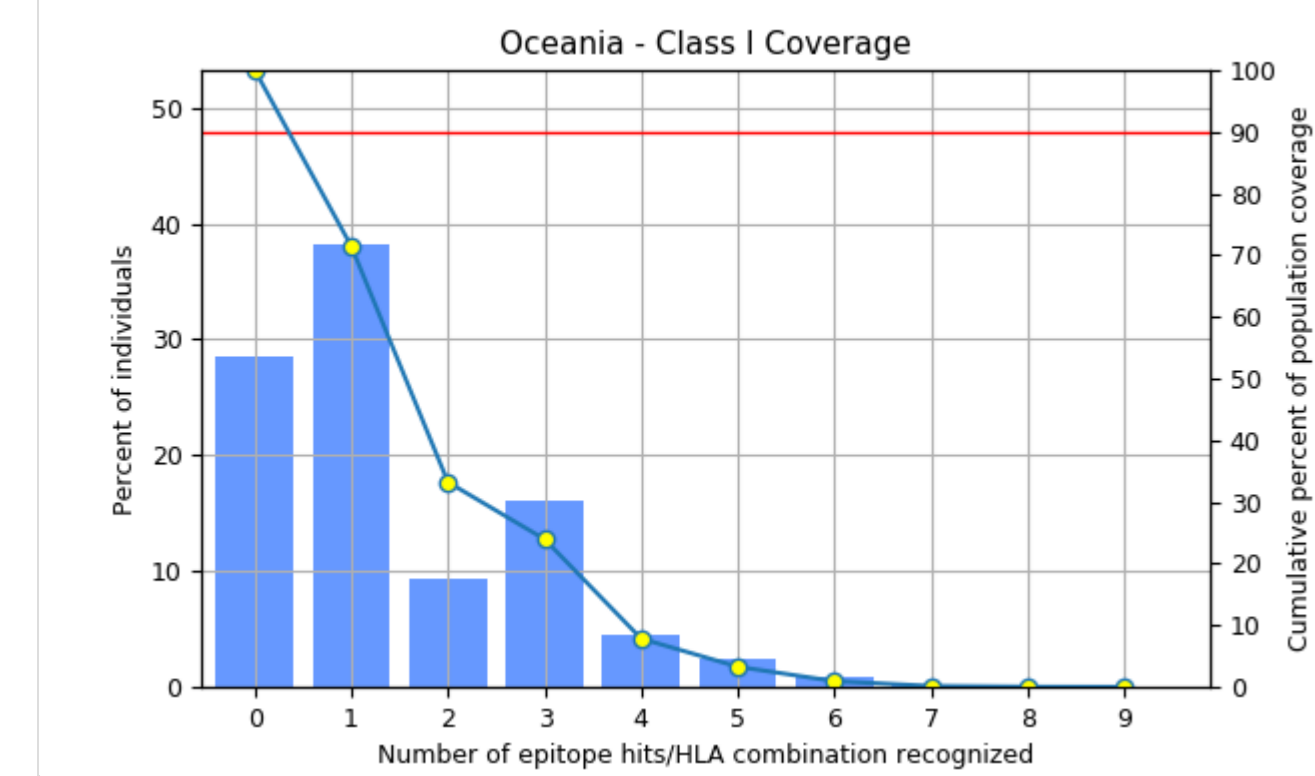
MHC class	Coverage	Average hit	PC90
II	98.16%	4.62	2.49

[View chart data in table format](#)View coverage of individual epitope in Northeast Asia [Back to top](#)

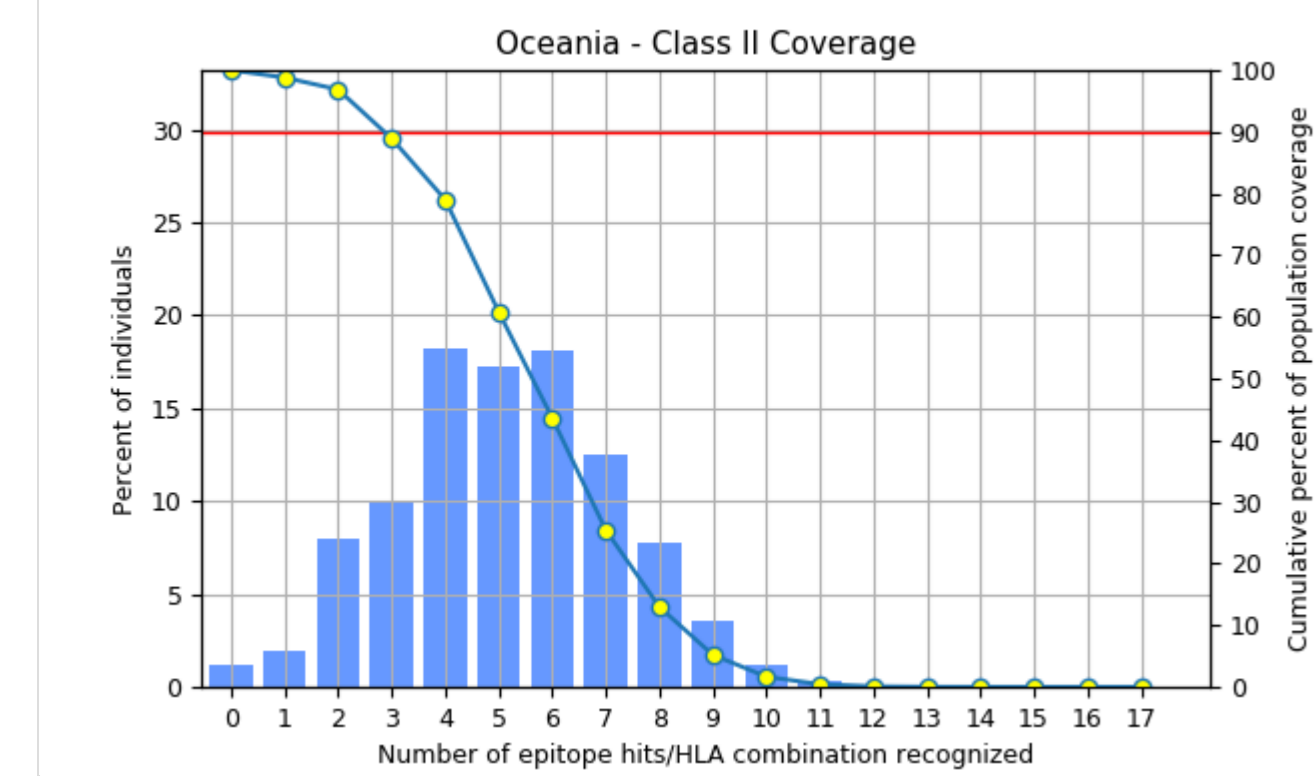
MHC class	Coverage	Average hit	PC90
combined	99.02%	5.6	3.08

[View chart data in table format](#)View coverage of individual epitope in Northeast Asia [Back to top](#)**Population: Oceania**

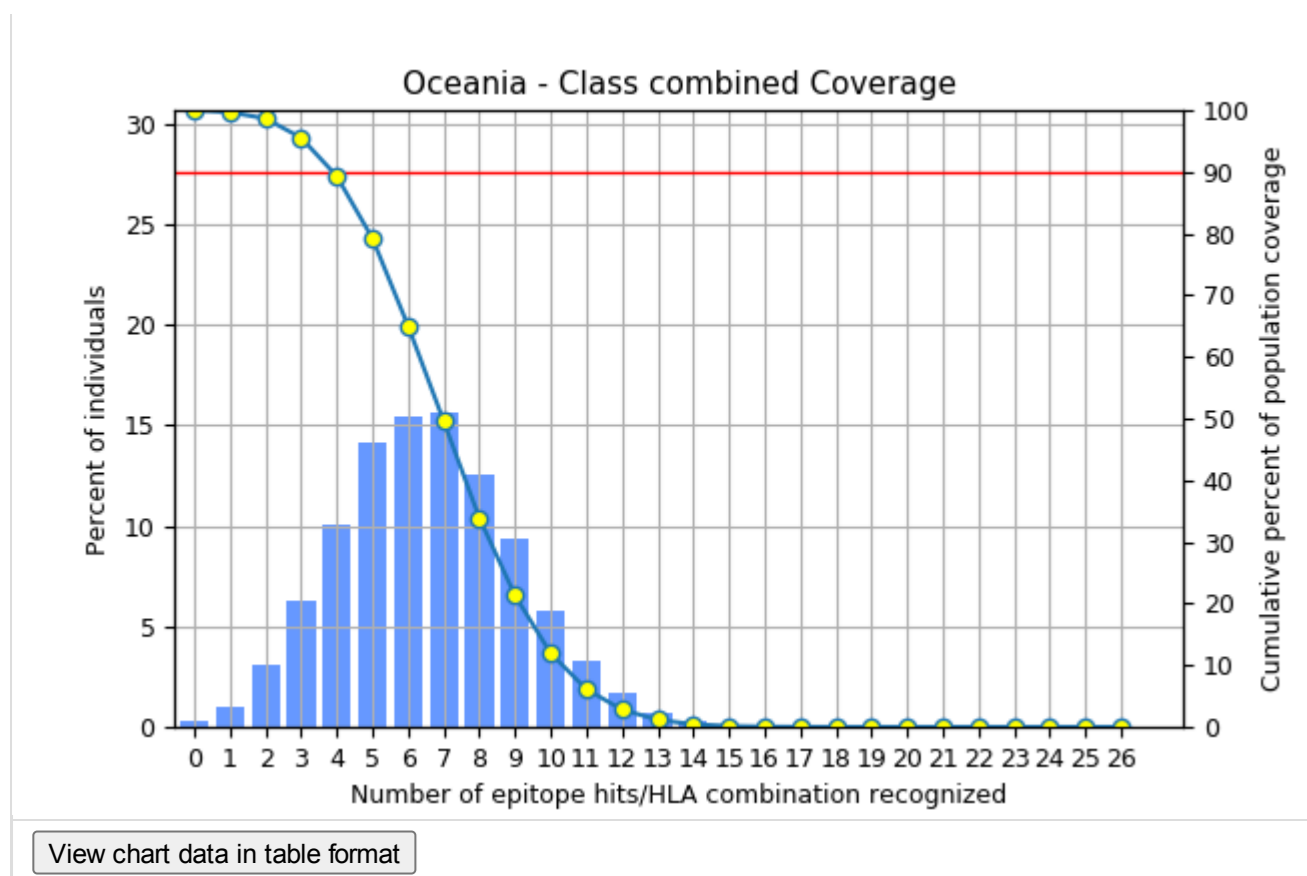
MHC class	Coverage	Average hit	PC90
I	71.42%	1.41	0.35

[View chart data in table format](#)View coverage of individual epitope in Oceania [Back to top](#)

MHC class	Coverage	Average hit	PC90
II	98.79%	5.14	2.86

[View chart data in table format](#)View coverage of individual epitope in Oceania [Back to top](#)

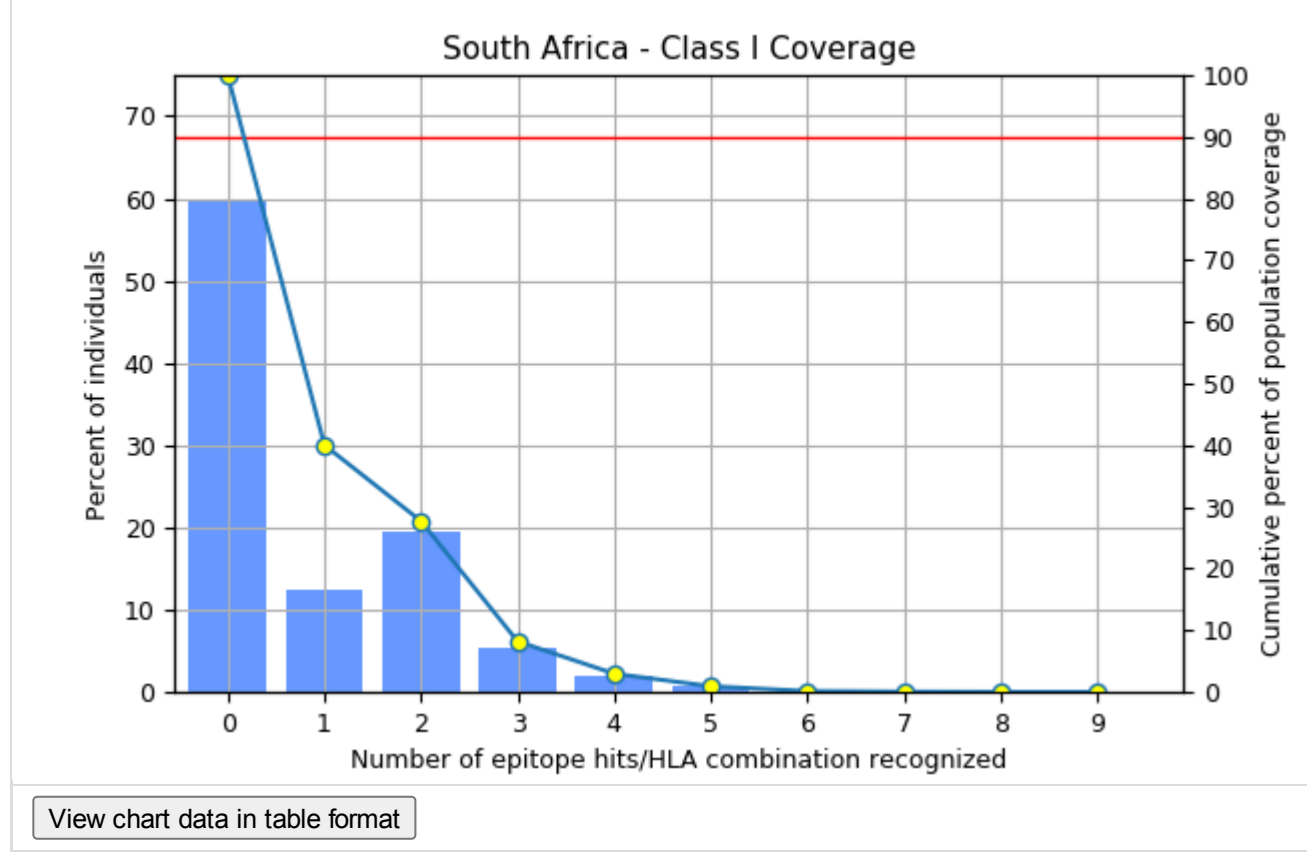
MHC class	Coverage	Average hit	PC90
combined	99.65%	6.55	3.88



[View coverage of individual epitope in Oceania](#) [Back to top](#)

Population: South Africa

MHC class	Coverage	Average hit	PC90
I	40.03%	0.8	0.17

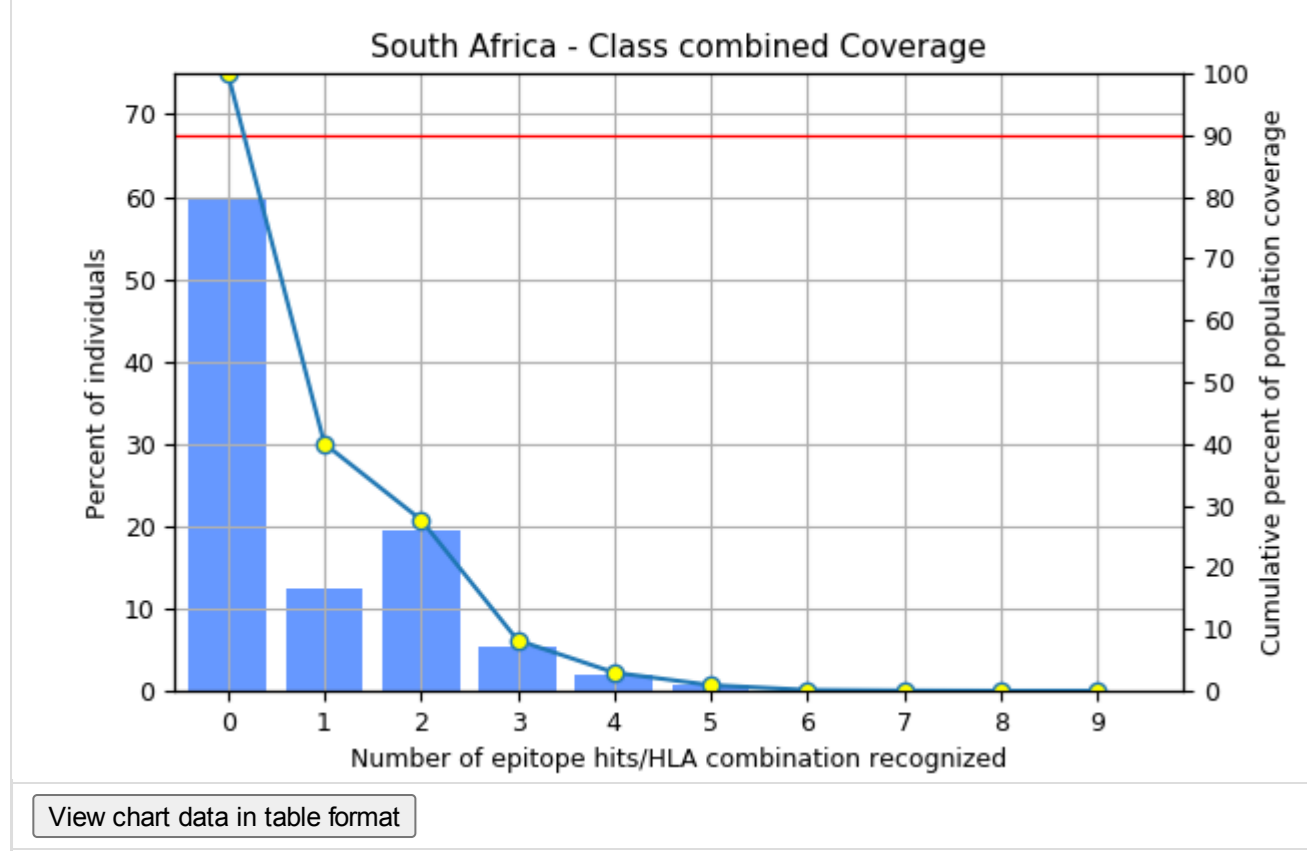


[View coverage of individual epitope in South Africa](#) [Back to top](#)

MHC class	Coverage	Average hit	PC90
II	0.0%	0.0	0.0

[View coverage of individual epitope in South Africa](#) [Back to top](#)

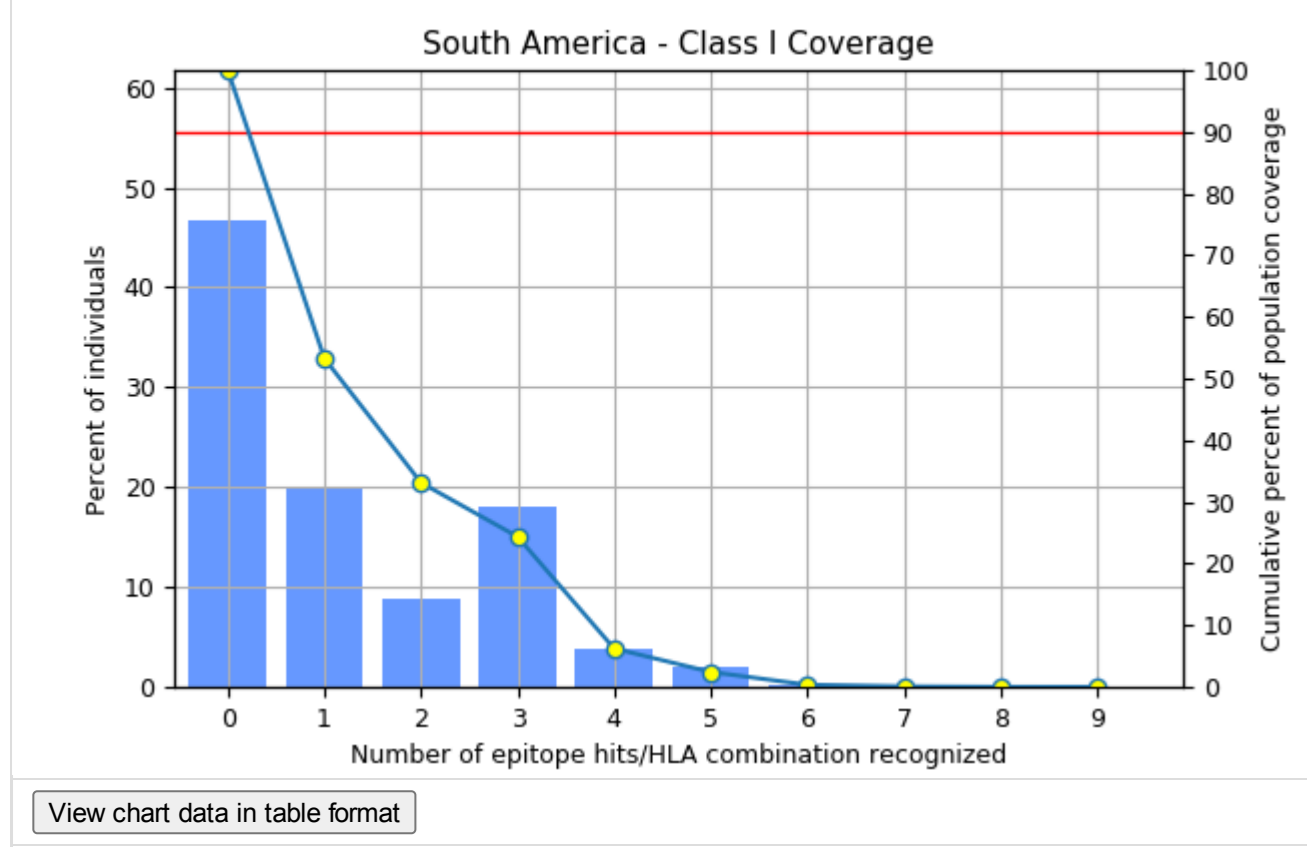
MHC class	Coverage	Average hit	PC90
combined	40.03%	0.8	0.17



[View coverage of individual epitope in South Africa](#) [Back to top](#)

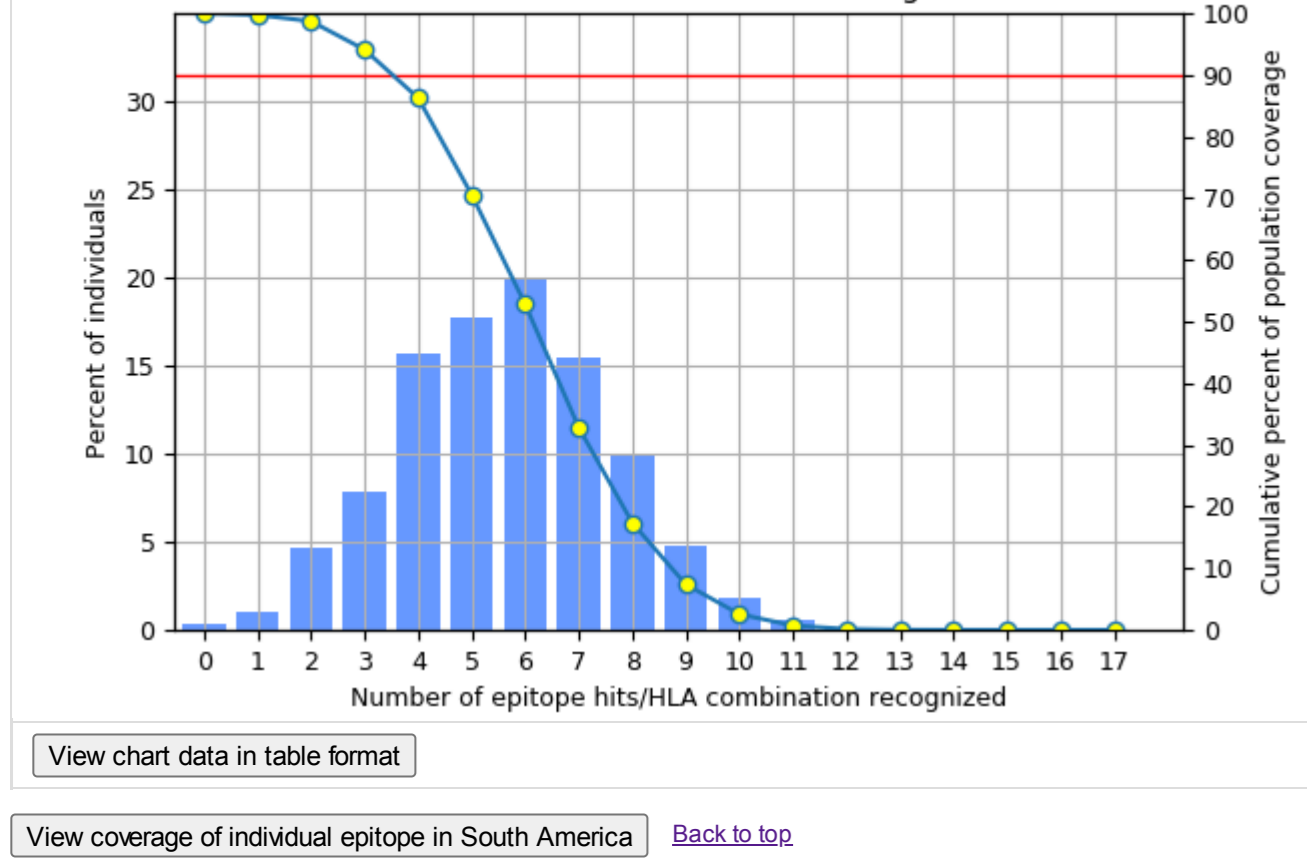
Population: South America

MHC class	Coverage	Average hit	PC90
I	53.26%	1.2	0.21



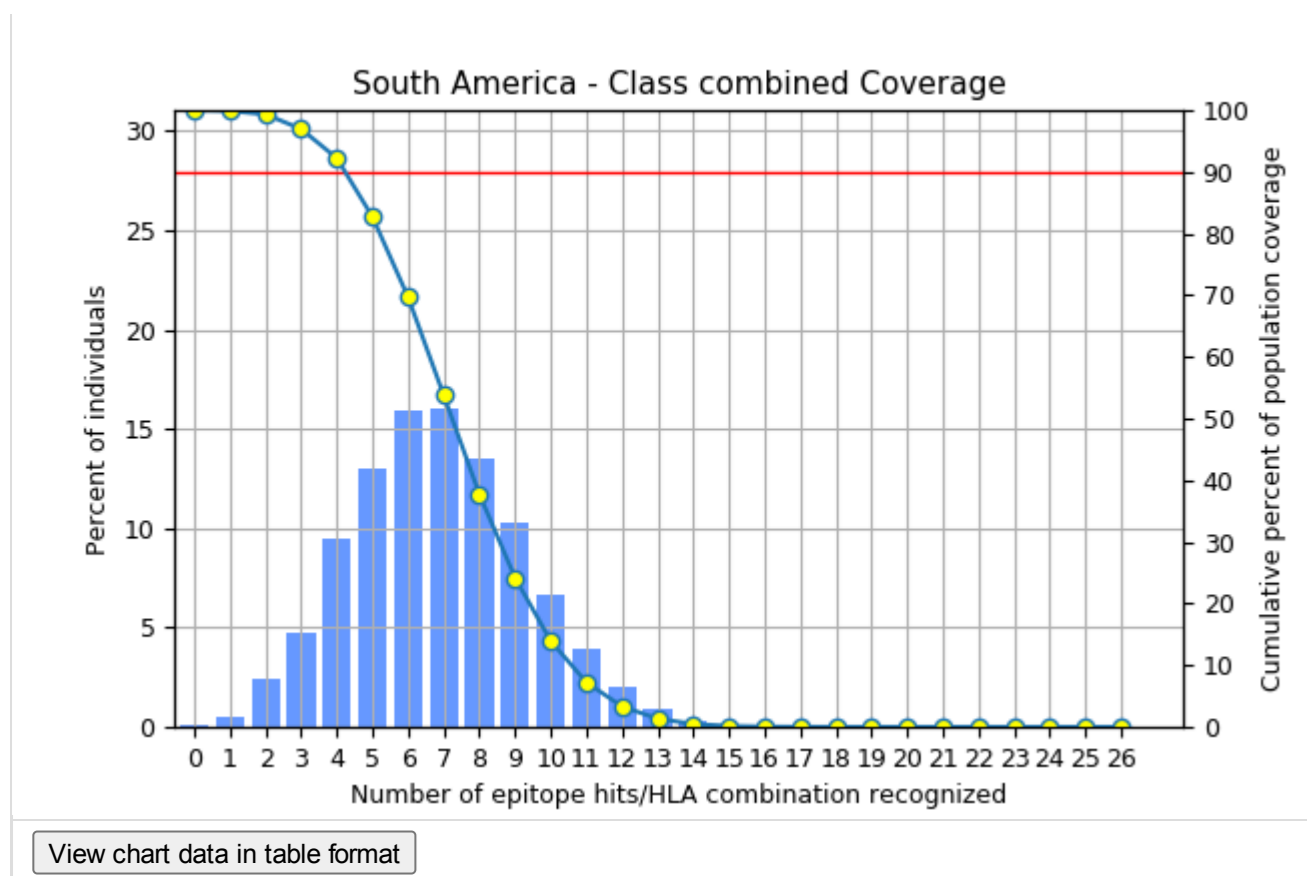
[View coverage of individual epitope in South America](#) [Back to top](#)

MHC class	Coverage	Average hit	PC90
II	99.71%	5.63	3.52



[View coverage of individual epitope in South America](#) [Back to top](#)

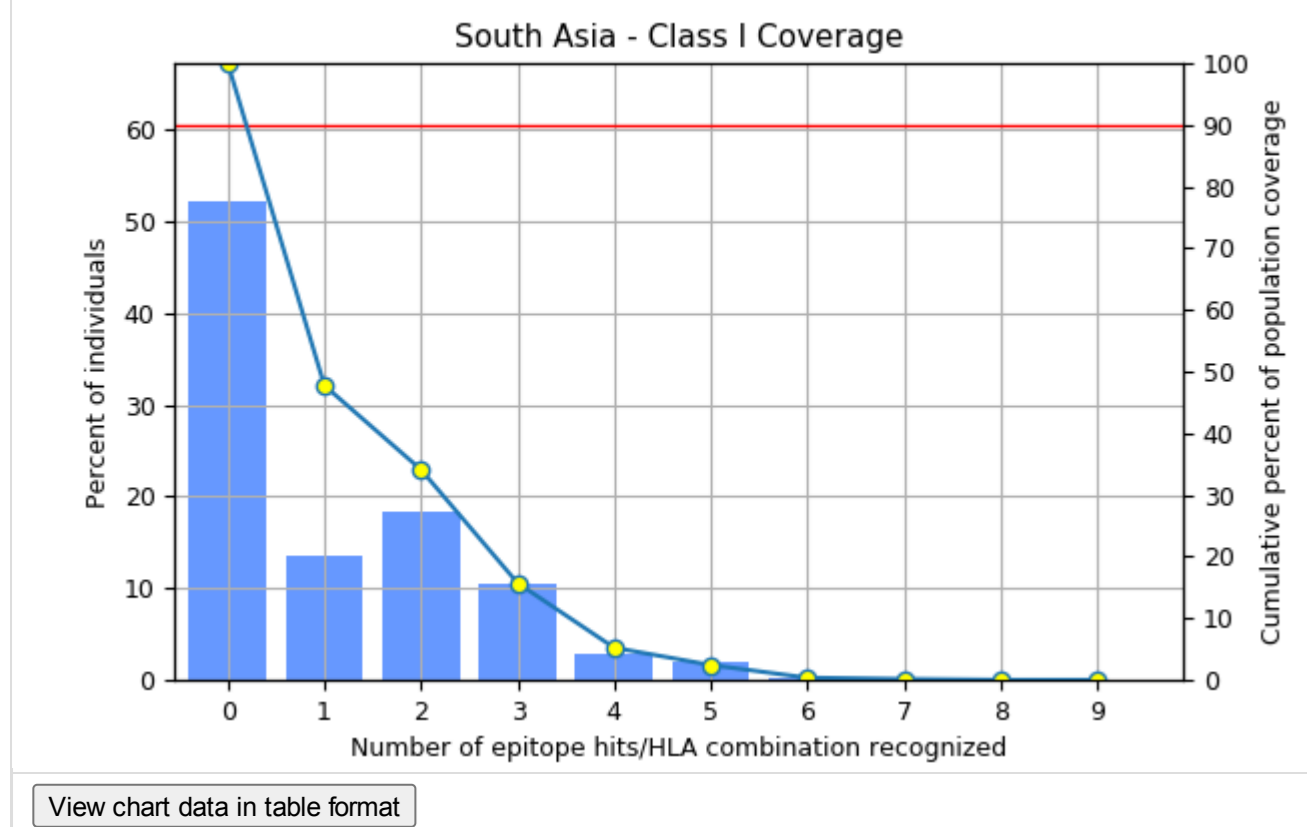
MHC class	Coverage	Average hit	PC90
combined	99.86%	6.83	4.23



[View coverage of individual epitope in South America](#) [Back to top](#)

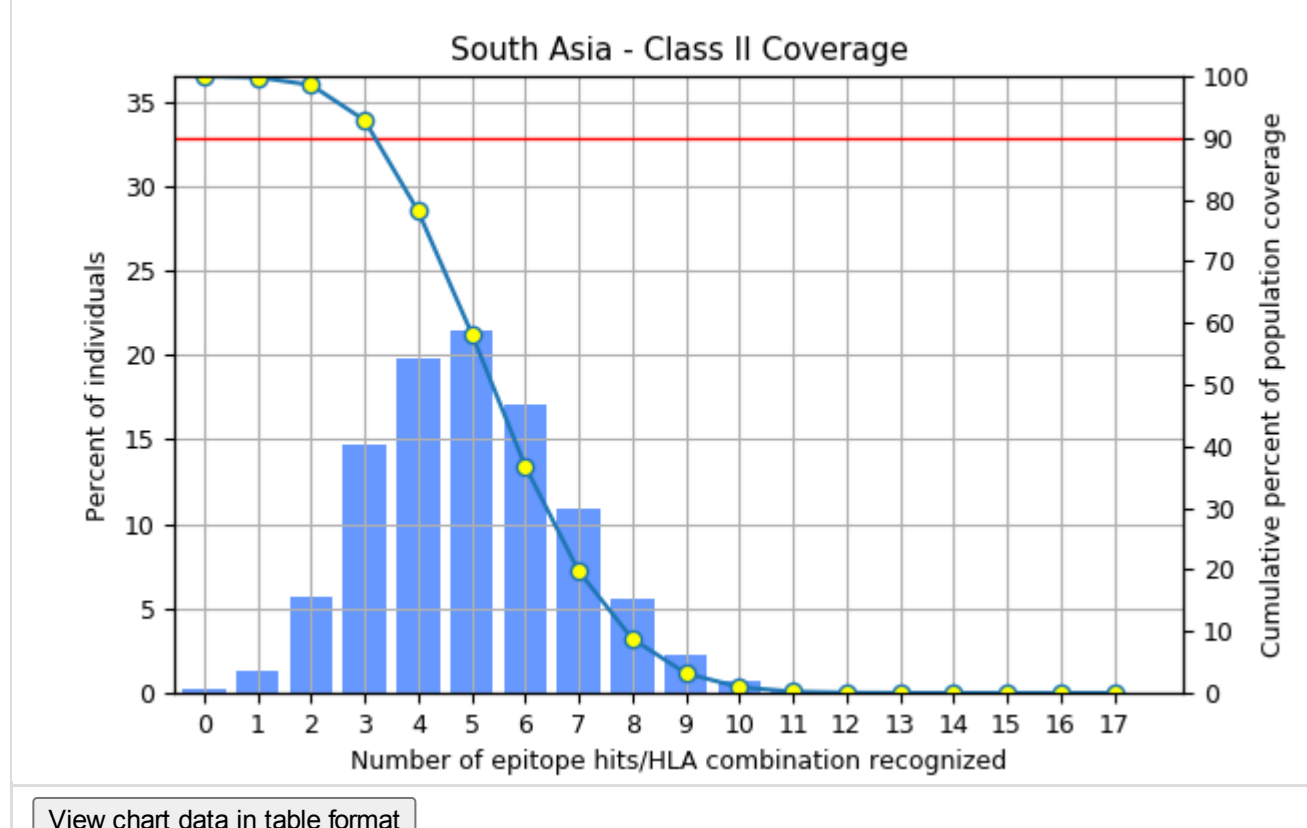
Population: South Asia

MHC class	Coverage	Average hit	PC90
I	47.74%	1.06	0.19



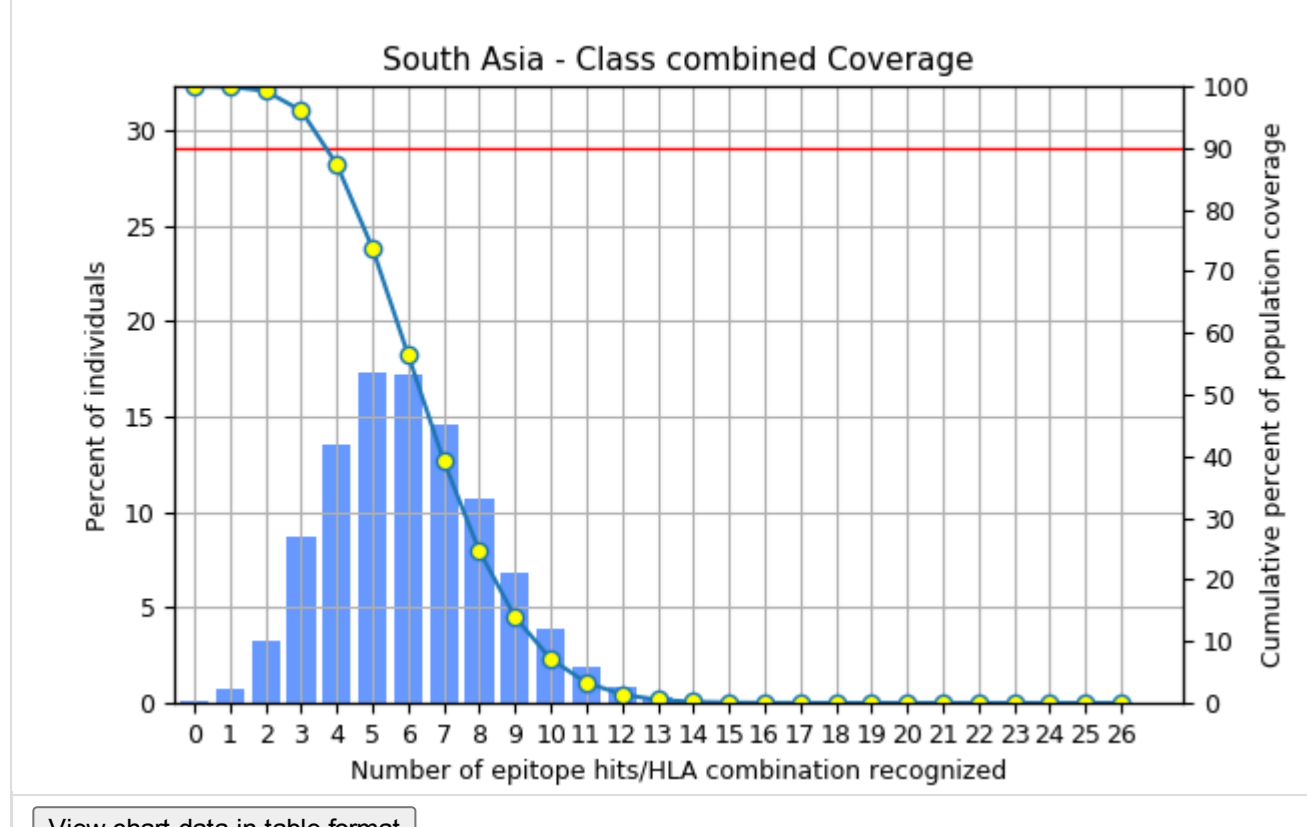
[View coverage of individual epitope in South Asia](#) [Back to top](#)

MHC class	Coverage	Average hit	PC90
II	99.82%	4.97	3.19



[View coverage of individual epitope in South Asia](#) [Back to top](#)

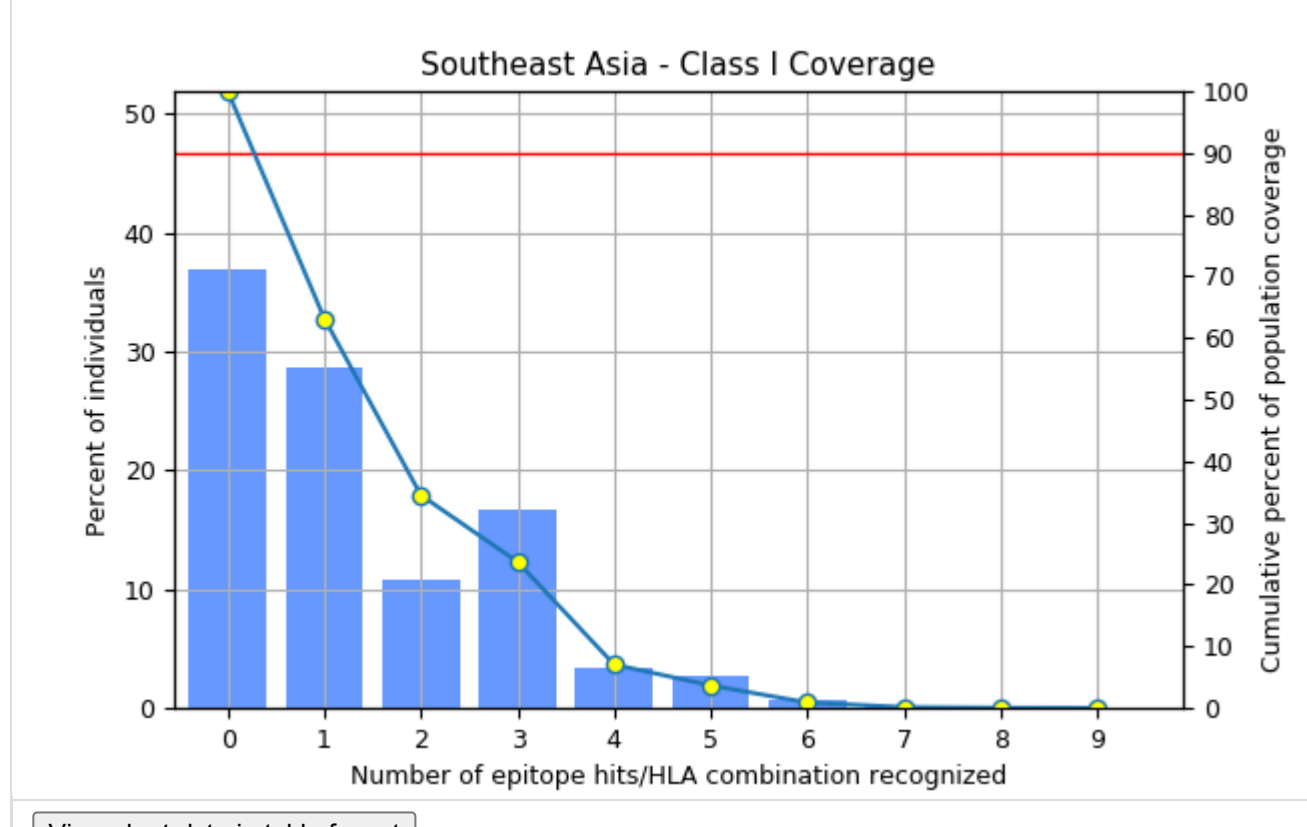
MHC class	Coverage	Average hit	PC90
combined	99.91%	6.03	3.69



[View coverage of individual epitope in South Asia](#) [Back to top](#)

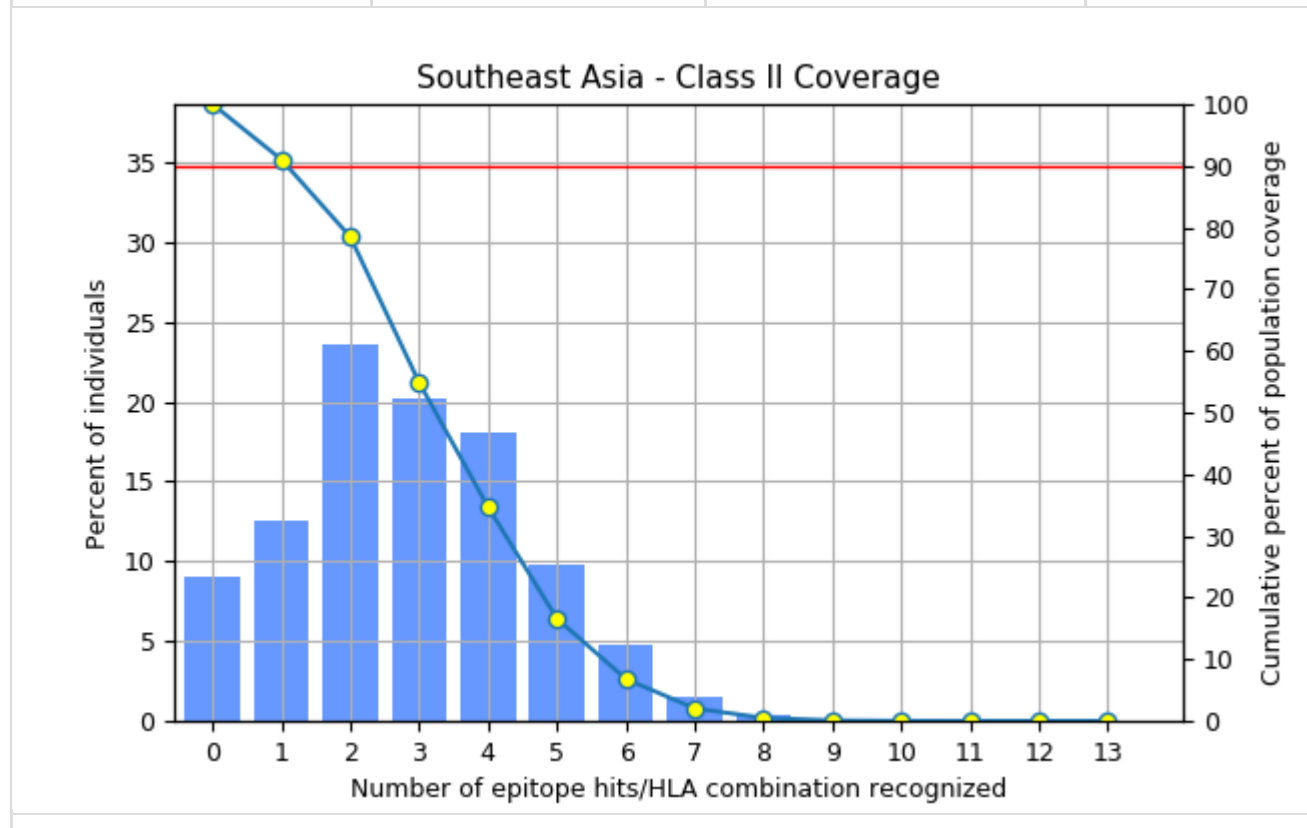
Population: Southeast Asia

MHC class	Coverage	Average hit	PC90
I	63.12%	1.33	0.27



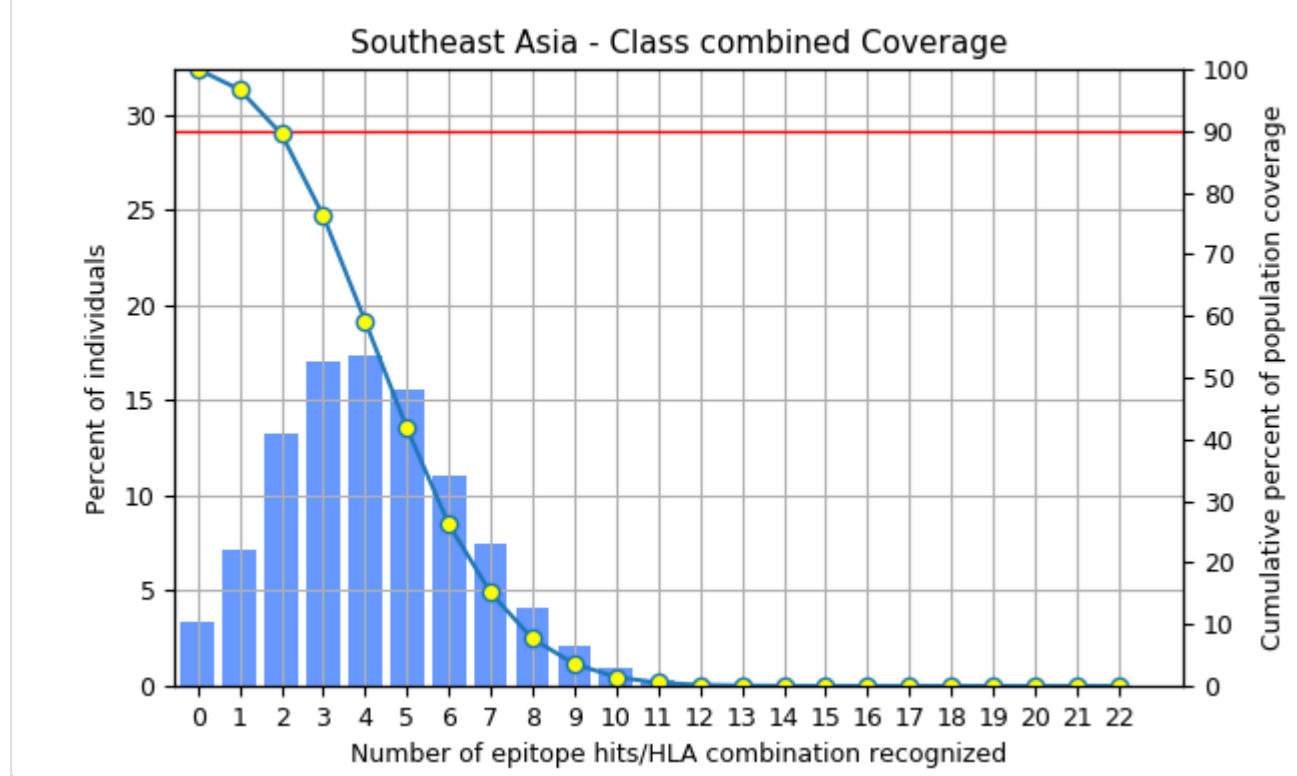
[View coverage of individual epitope in Southeast Asia](#) [Back to top](#)

MHC class	Coverage	Average hit	PC90
II	91.01%	2.85	1.08

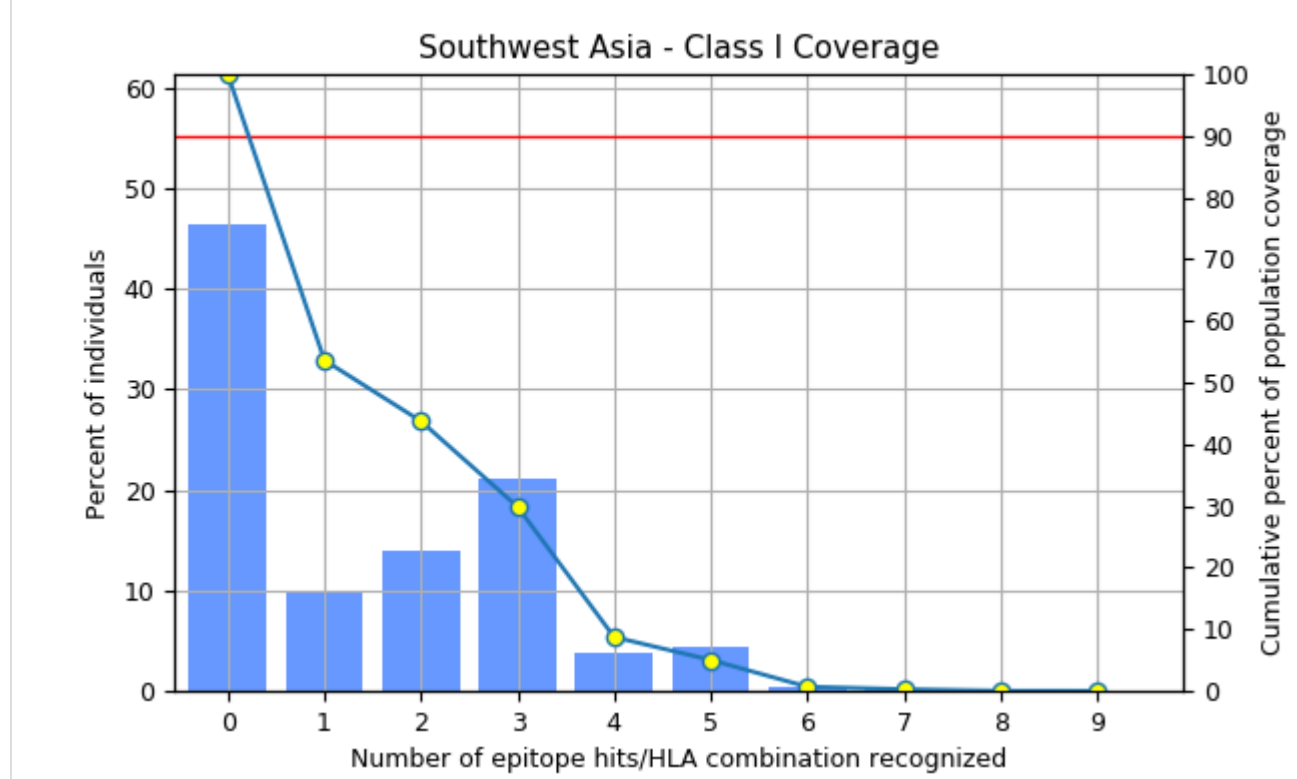


[View chart data in table format](#)[View coverage of individual epitope in Southeast Asia](#) [Back to top](#)

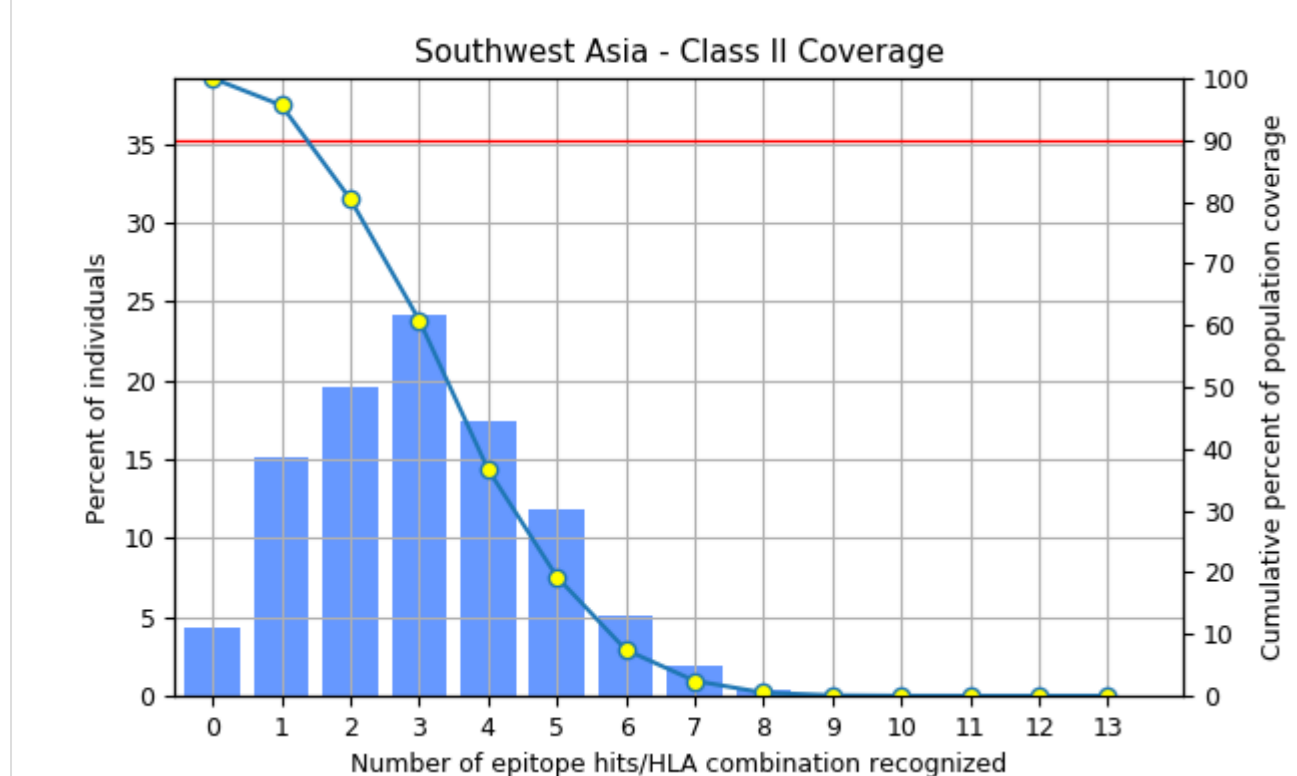
MHC class	Coverage	Average hit	PC90
combined	96.69%	4.18	1.93

[View chart data in table format](#)[View coverage of individual epitope in Southeast Asia](#) [Back to top](#)**Population: Southwest Asia**

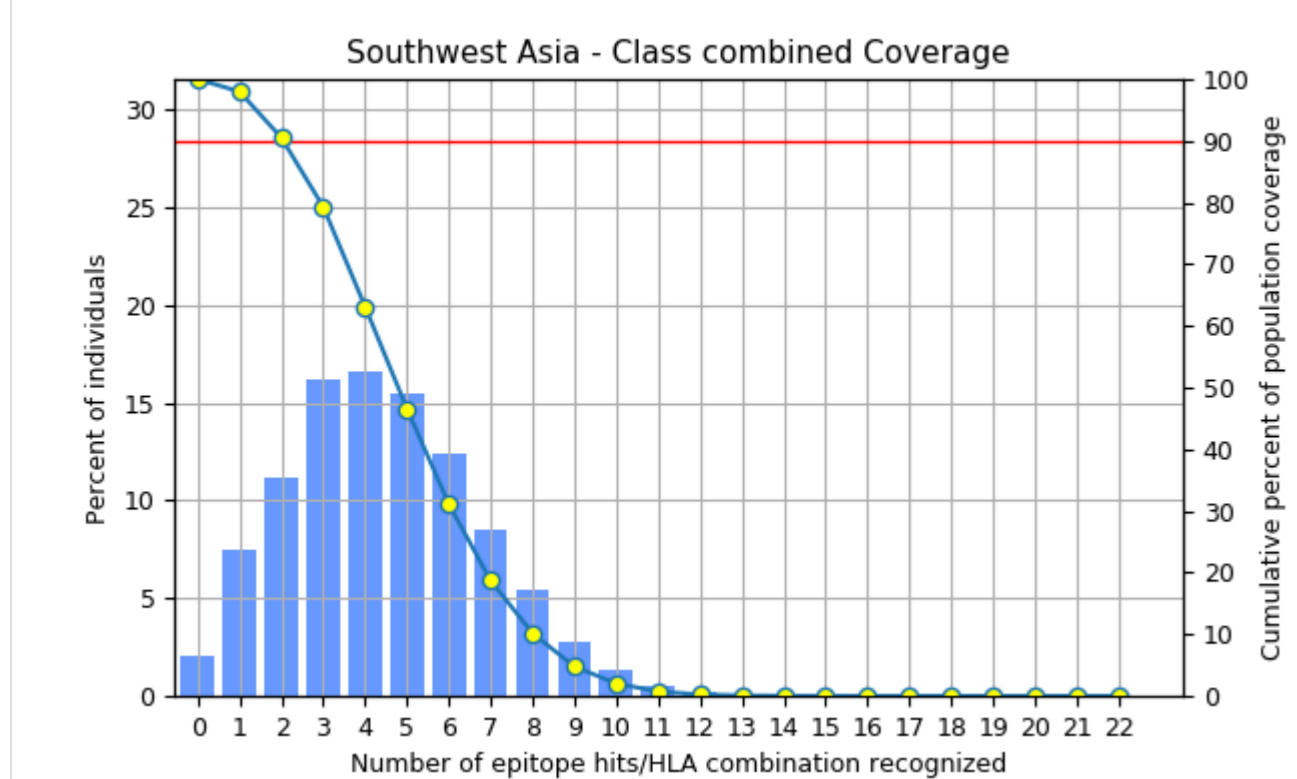
MHC class	Coverage	Average hit	PC90
I	53.62%	1.42	0.22

[View chart data in table format](#)[View coverage of individual epitope in Southwest Asia](#) [Back to top](#)

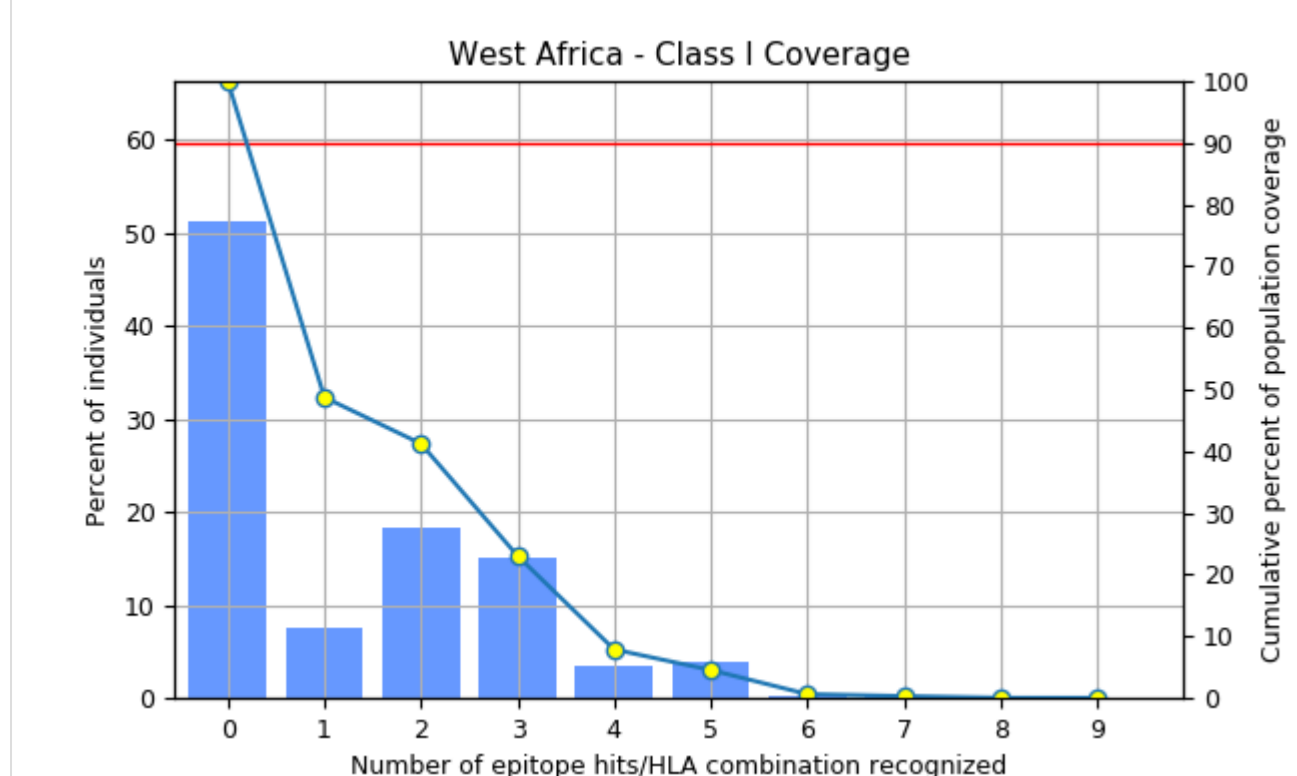
MHC class	Coverage	Average hit	PC90
II	95.63%	3.03	1.37

[View chart data in table format](#)[View coverage of individual epitope in Southwest Asia](#) [Back to top](#)

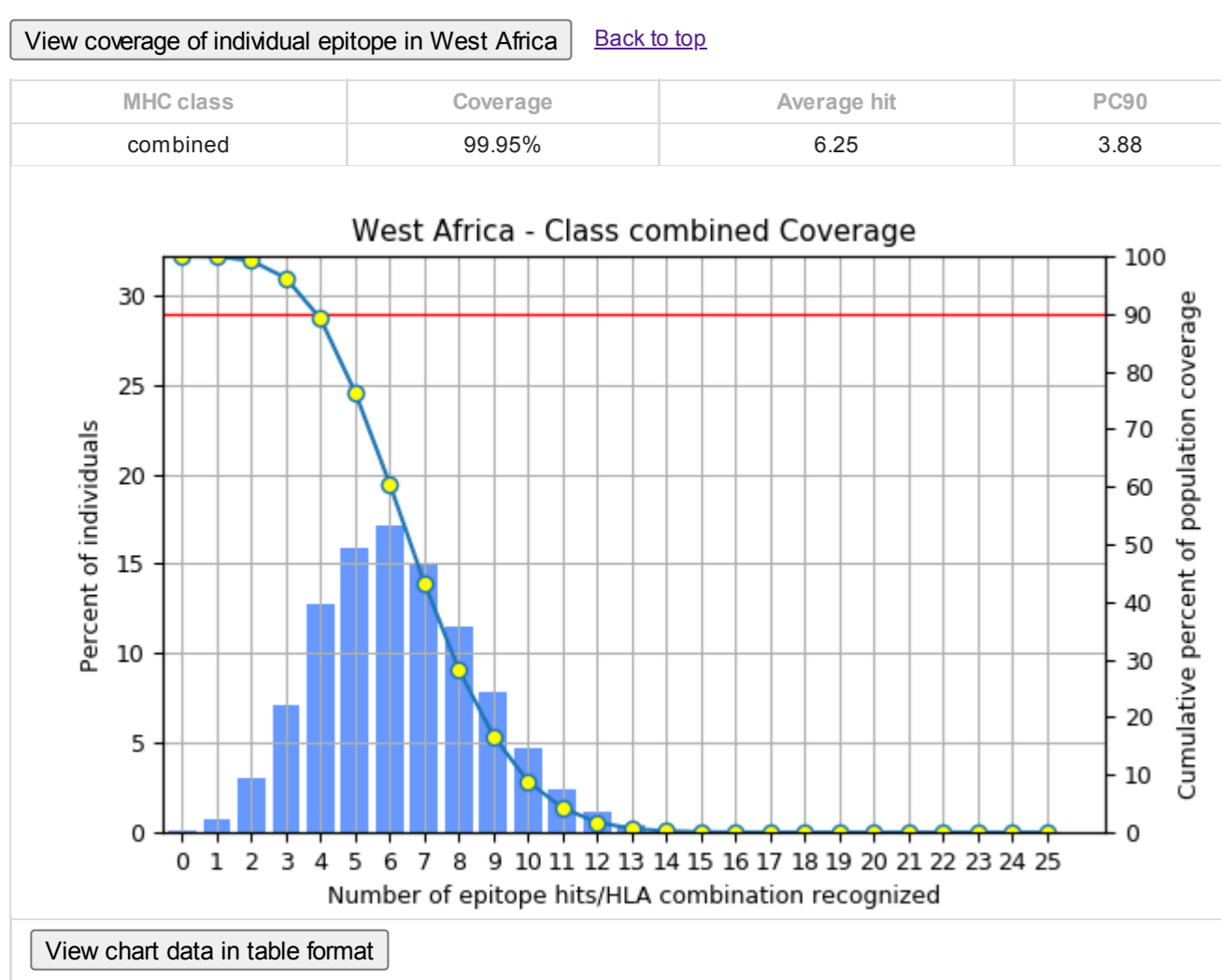
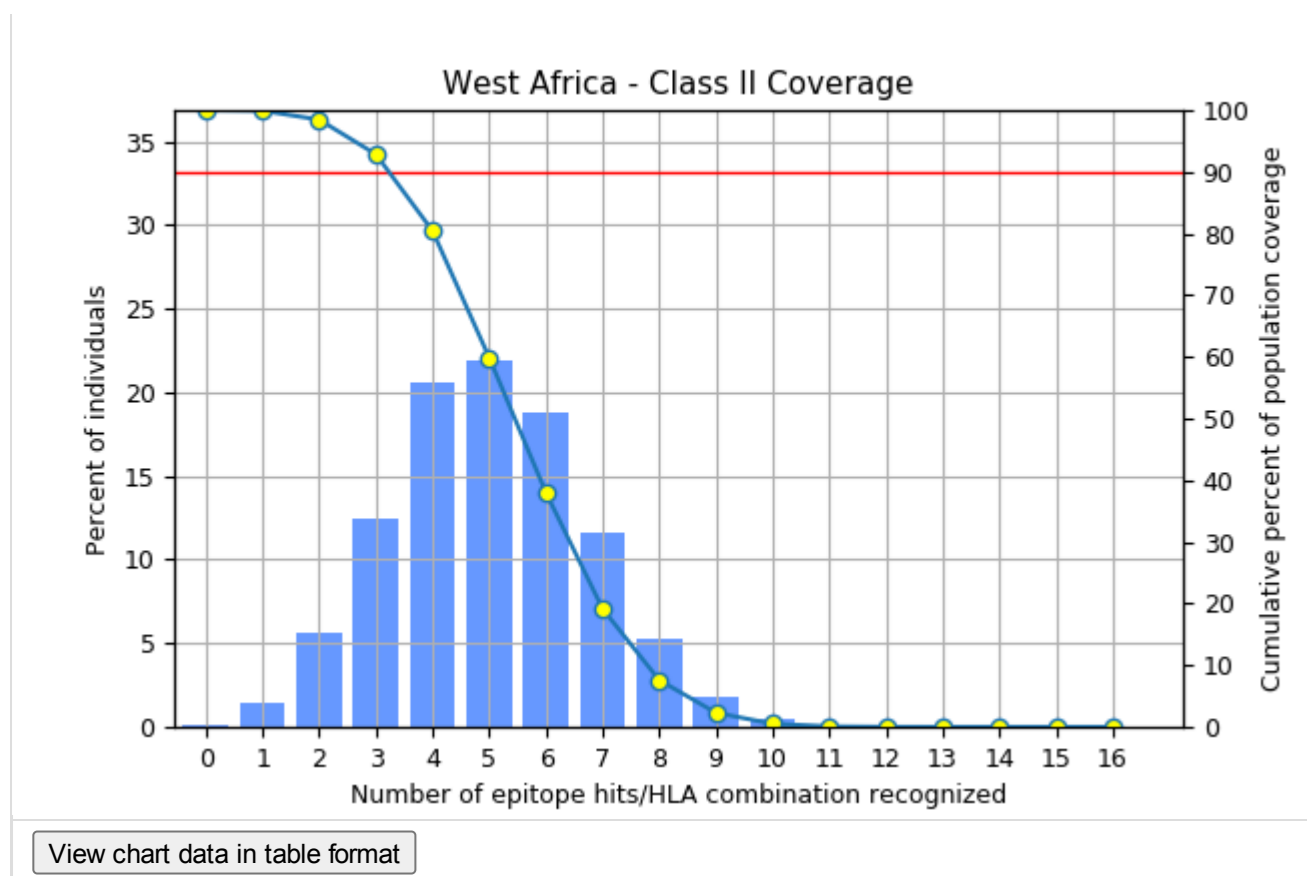
MHC class	Coverage	Average hit	PC90
combined	97.97%	4.45	2.04

[View chart data in table format](#)[View coverage of individual epitope in Southwest Asia](#) [Back to top](#)**Population: West Africa**

MHC class	Coverage	Average hit	PC90
I	48.73%	1.26	0.2

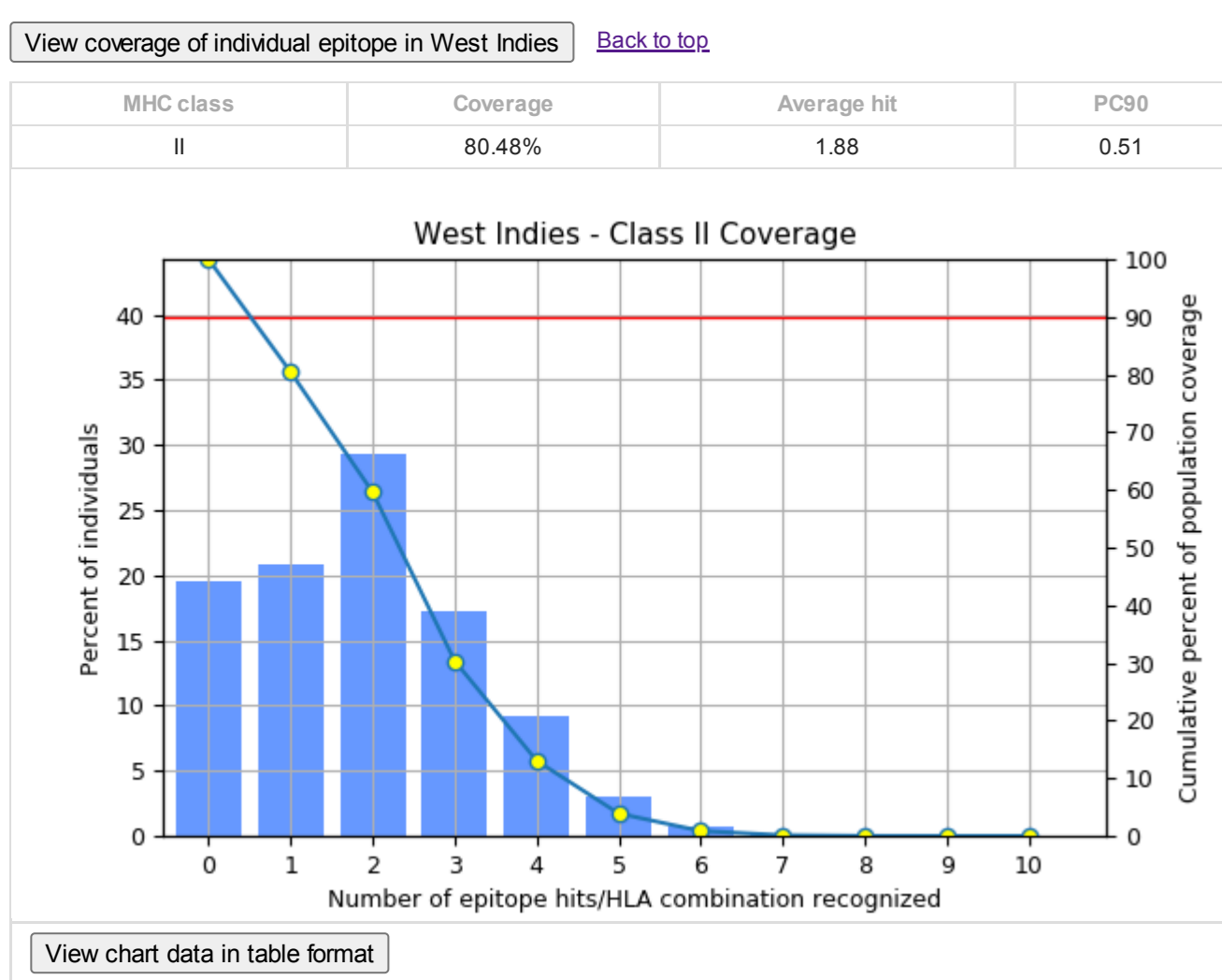
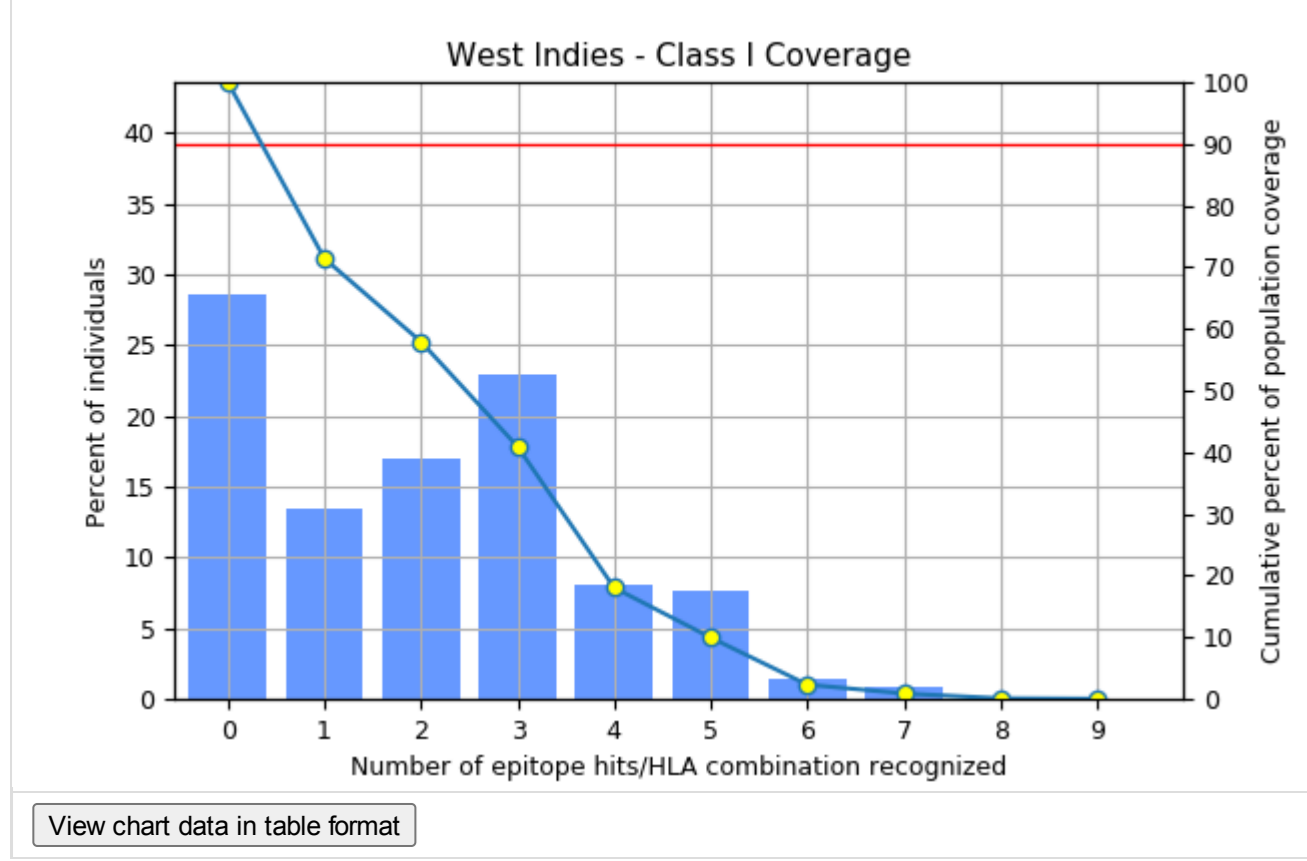
[View chart data in table format](#)[View coverage of individual epitope in West Africa](#) [Back to top](#)

MHC class	Coverage	Average hit	PC90
II	99.9%	4.99	3.23

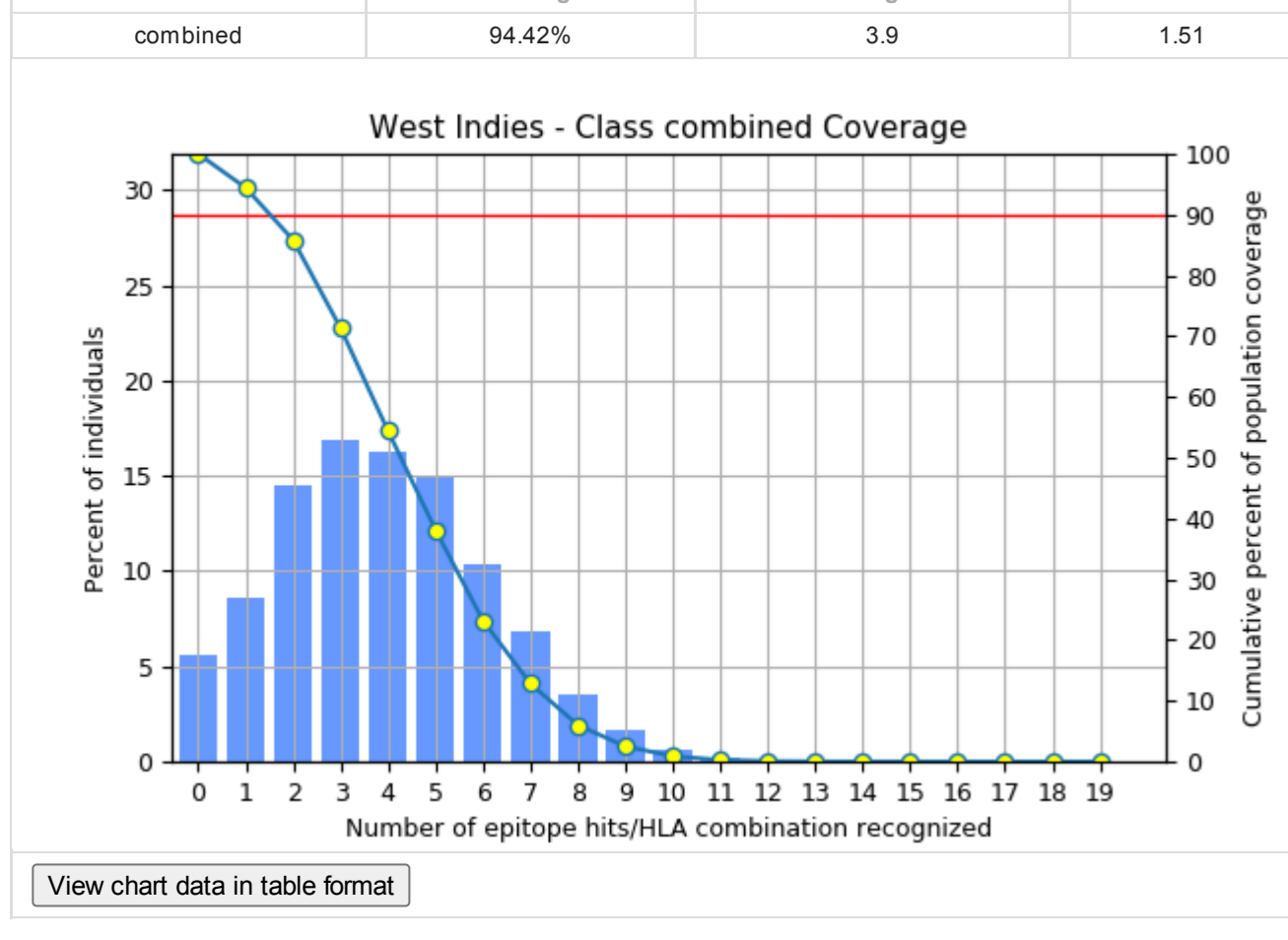


View coverage of individual epitope in West Africa [Back to top](#)

Population: West Indies



View coverage of individual epitope in West Indies [Back to top](#)



View coverage of individual epitope in West Indies [Back to top](#)

© 2005-2021 | [IEDB Home](#)
 Supported by a contract from the [National Institute of Allergy and Infectious Diseases](#), a component of the National Institutes of Health in the Department of Health and Human Services.