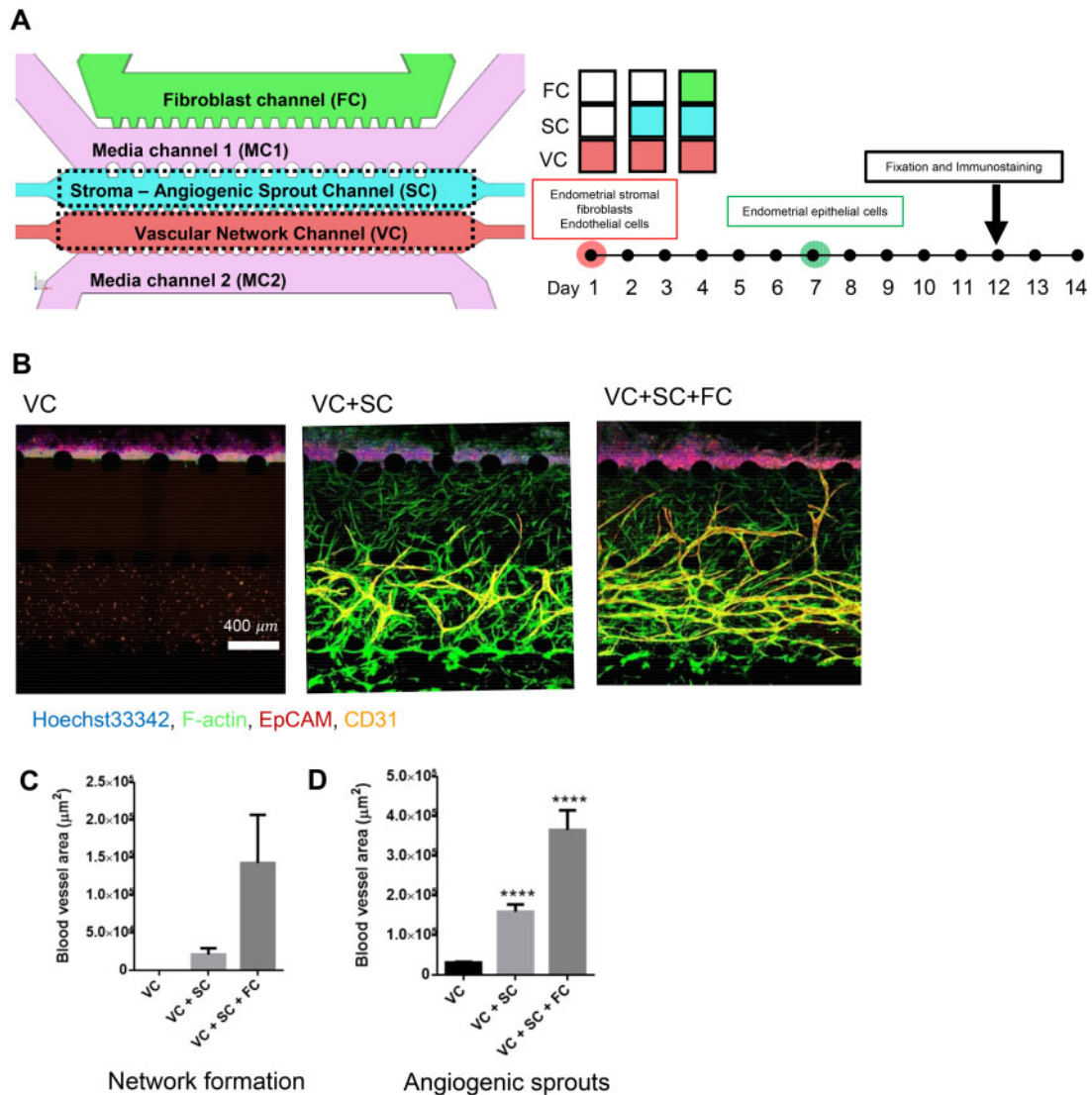


human reproduction SUPPLEMENTARY DATA



Supplementary Figure S2. Microvascular network formation with different endometrial stromal cells patterning methods.

(A) Schematic illustration of three different stromal cell patterning methods: non, SC patterning, SC and FC patterning. (B) Representative confocal images show different vasculogenic and angiogenic sprouts responses under different stromal cell patterning methods. (C and D) Network formation area and angiogenic sprouts area with different stromal cell patterning methods, respectively. One-way ANOVA, plotted as mean ± SD where **** is $P < 0.0001$.