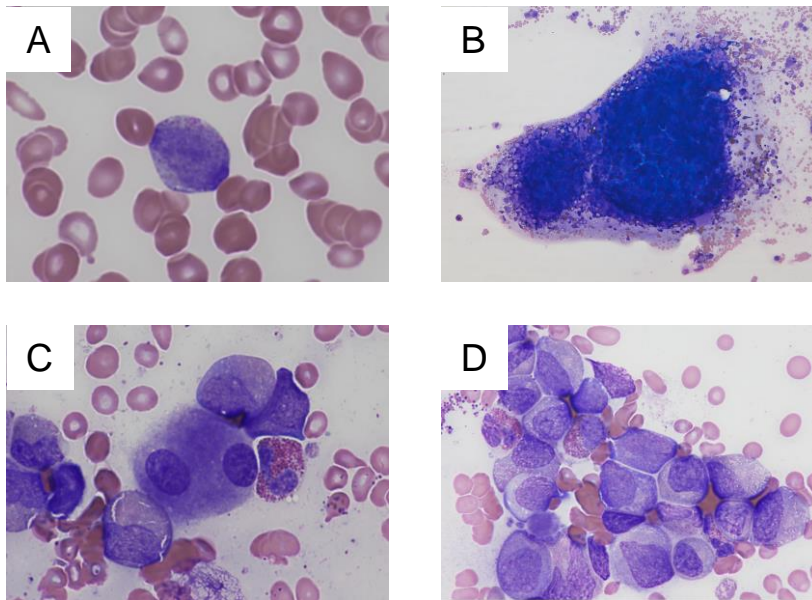
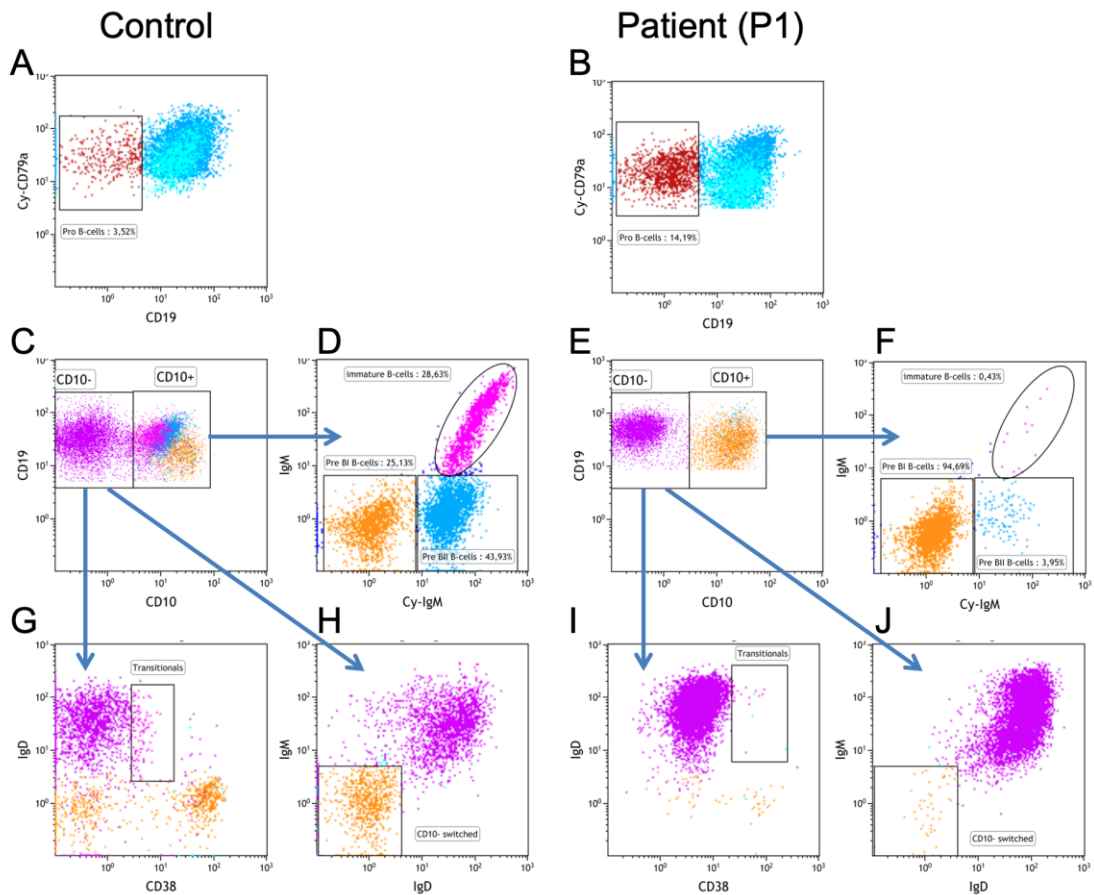


## Online Resource 2

I)



II)



**I) Blood and bone marrow morphology** A) Left shift of peripheral blood with presence of myeloid precursors B) hyperplastic bone marrow C) a dysplastic megakaryoblast with round separated nuclei D) strongly left-shifted myelopoiesis and increased eosinophils

**II) Analysis of mature B cells and B-cell precursors in bone marrow by flow cytometry.** A,B. Analysis of Pro B-cells (CD19-CD79a+) gated on CD3/16/33-CD79a+ cells. C,E. Analysis of mature B cells (CD19+CD10-) and B-cell precursors (CD19+CD10+) gated on CD3/16/33-CD19+ cells. D,F. Analysis of B-cell precursor subpopulations: Pre-BI (IgM-cyIgM-), PreB-II (IgM-cyIgM+) and immature B-cells (IgM+cylgM+) gated on CD19+CD10+. G,H,I,J. Analysis of mature B-cell subpopulations gated on CD19+CD10-. cyCD79a, cytoplasmic CD79a. cyIgM, cytoplasmic IgM.