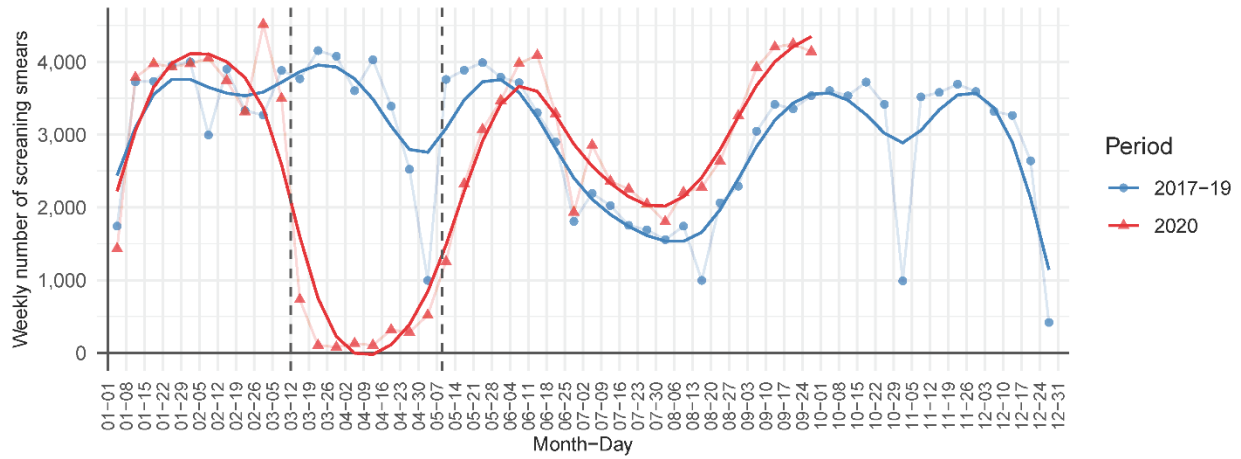
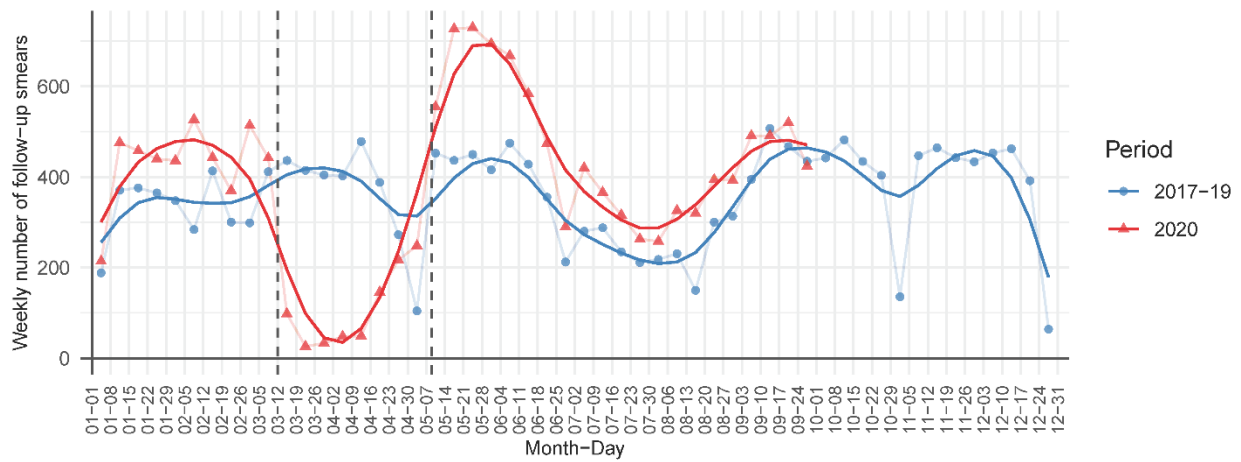


# SUPPLEMENTARY MATERIAL

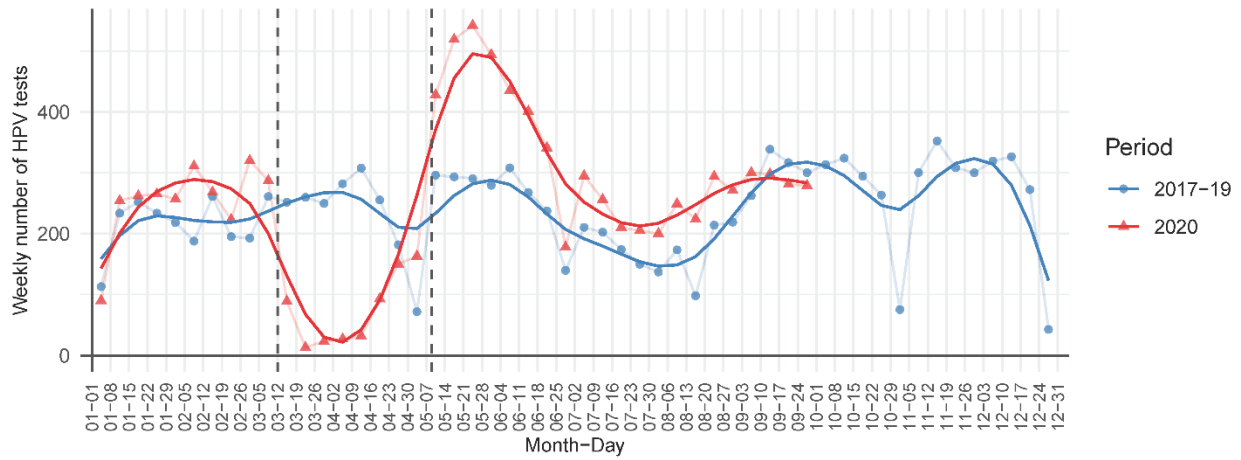
(a) Screening smears



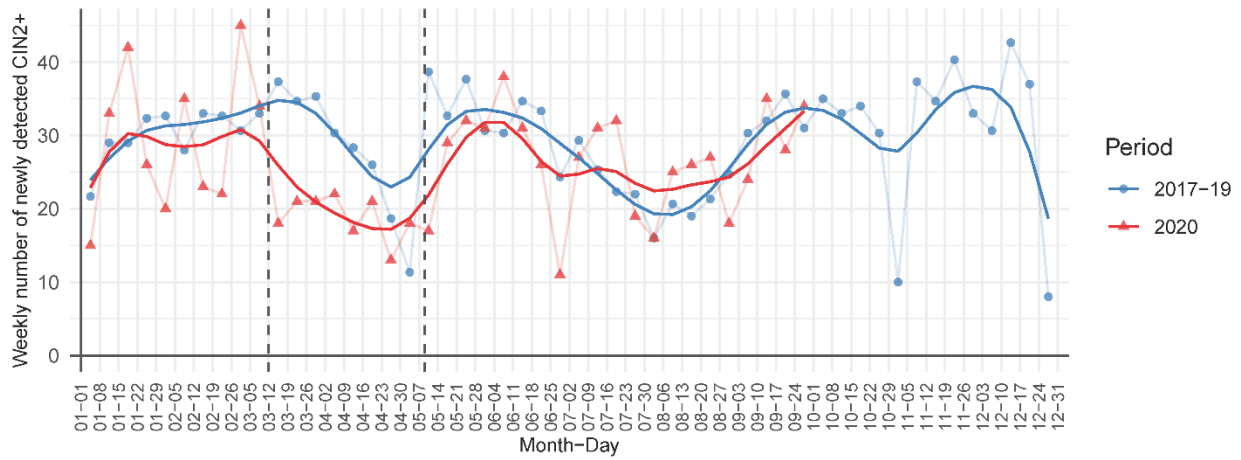
b) Follow-up smears



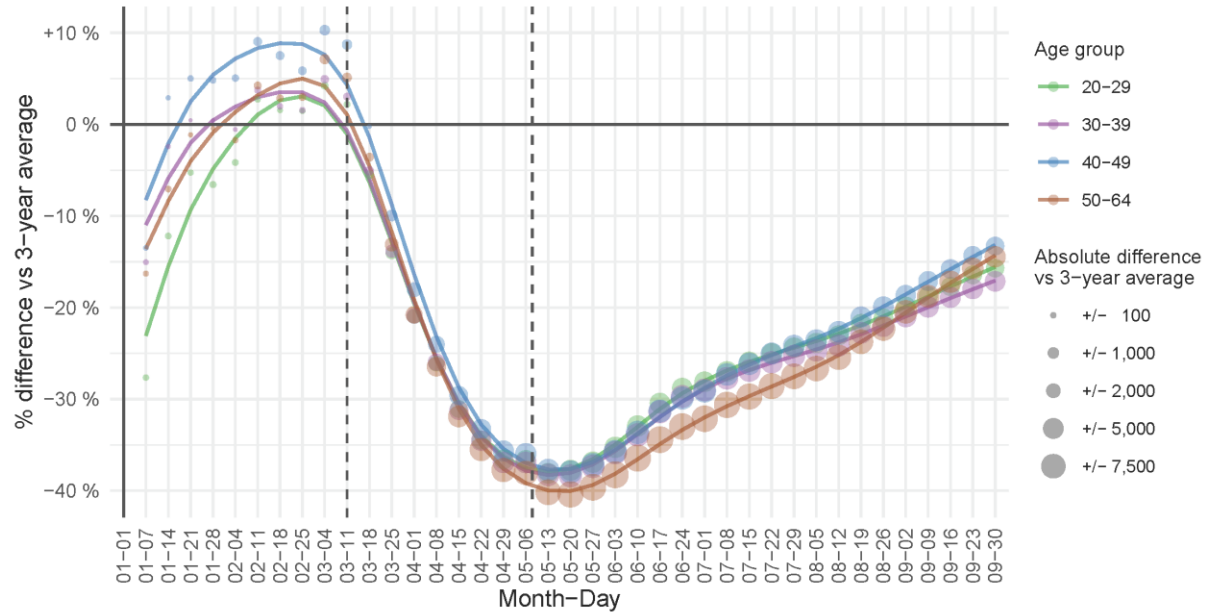
c) HPV triage



d) Newly detected CIN2+



**Supplementary Figures S1:** Weekly number of (a) screening smears, (b) follow-up smears, (c) HPV triage tests and (d) newly detected CIN2+ in year 2020 (red) compared to three-year average during 2017–2019 (blue) for women aged 20 to 64 years. Data source: National Cervical Cancer Screening Registry ZORA.



**Supplementary Figure S2: Age-specific cumulative deficit (%) of cervical screening from January 1st to September 30th 2020 by weeks compared to three-year average in the 2017–2019 (reference value 0).** Age-groups are represented by colours. Vertical deviation from 0 % represents cumulative relative (%) difference and point size represents absolute cumulative difference from January 1st, compared to 3-year average. Data source: National Cervical Cancer Screening Registry ZORA.