

Figure S1. VEGF expression in oral squamous cell carcinoma. (A) Low VEGF expression; (B) High VEGF expression. Scale bar=100 μ m. VEGF, vascular endothelial growth factor.

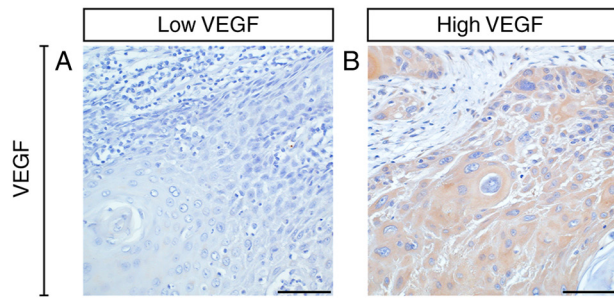


Table SI. Association between PD-L1 expression and tumor recurrence.

Variables	PD-L1 expression			P-value
	PD-L1 ⁻ (n=7)	PD-L1 ^{+low} (n=5)	PD-L1 ^{+high} (n=5)	
Tumor recurrence				0.165
No				
N=9	4	4	1	
Tumor recurrence, %	44.4	44.4	11.1	
PD-L1 expression, %	57.1	80.0	20.0	
Yes				
N=8	3	1	4	
Tumor recurrence, %	37.5	12.5	50.0	
PD-L1 expression, %	42.9	20.0	80.0	

P<0.05 via Fisher's exact test was considered statistically significant. PD-L1, programmed death ligand-1; PD-L1⁻, negative PD-L1; PD-L1^{+low}, low-positive PD-L1; PD-L1^{+high}, high-positive PD-L1.