

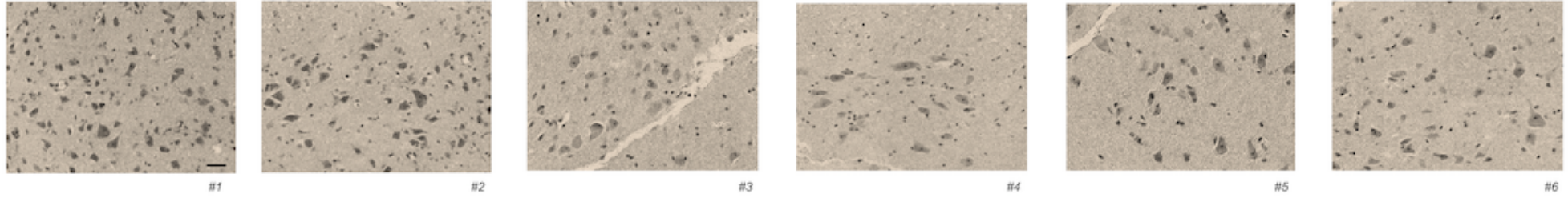
Supporting material for Reviewers only

Supporting material for Reviewers only

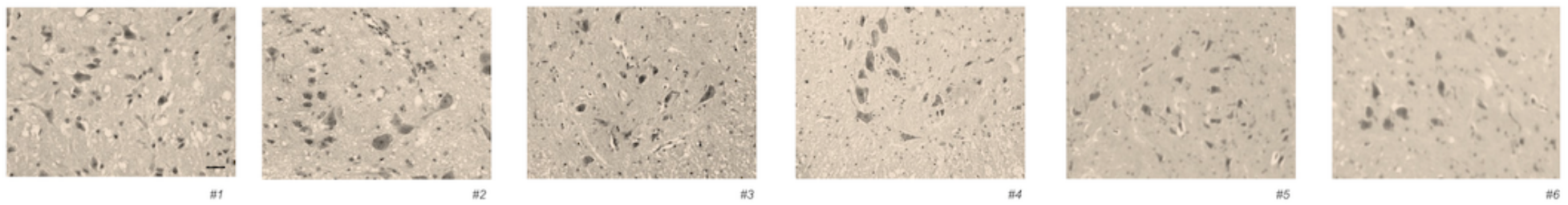
(biological replicates used for histological MN counts, in male treated mice at the low dose of CTEP 2mg/kg/48h)

Supporting material at the figure 6

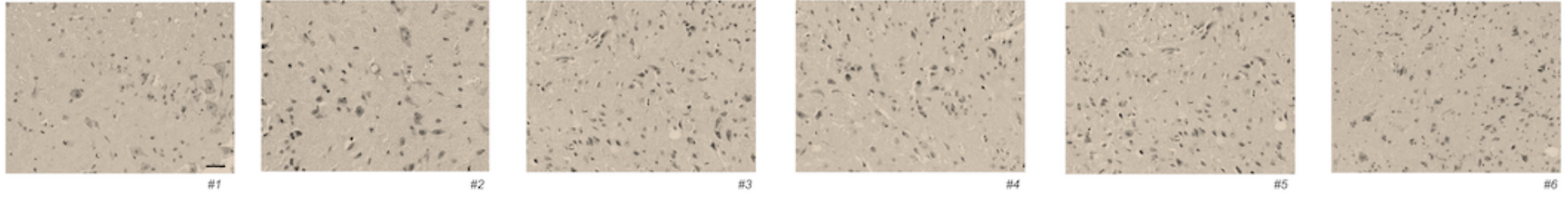
Vehicle-treated WT



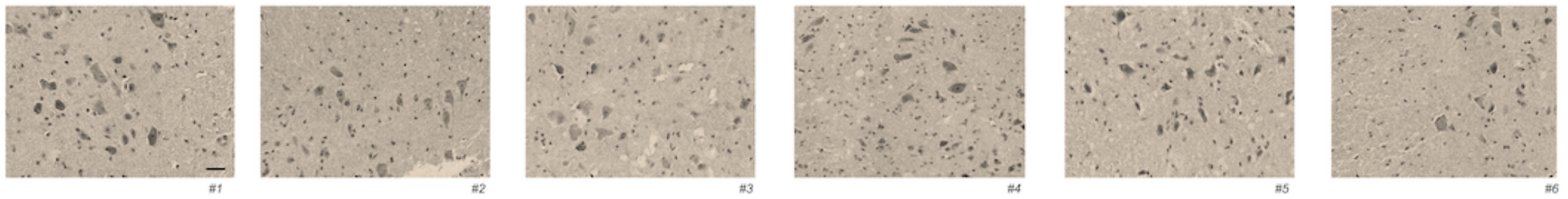
CTEP-treated (2mg/kg) WT



Vehicle-treated SOD1^{G93A}



CTEP-treated (2mg/kg) SOD1^{G93A}

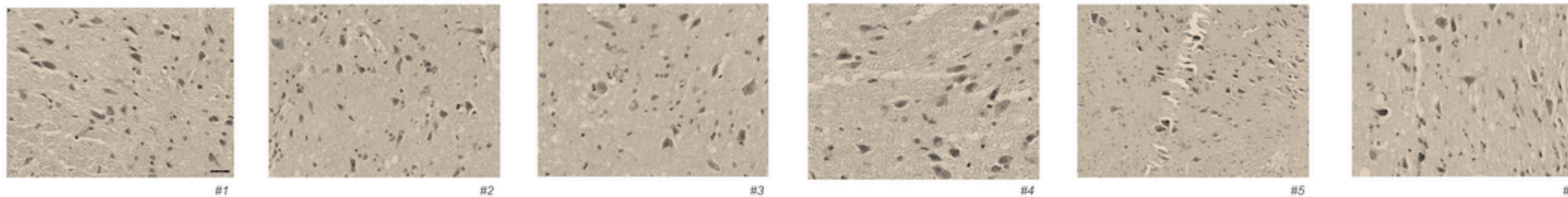


Supporting material for Reviewers only

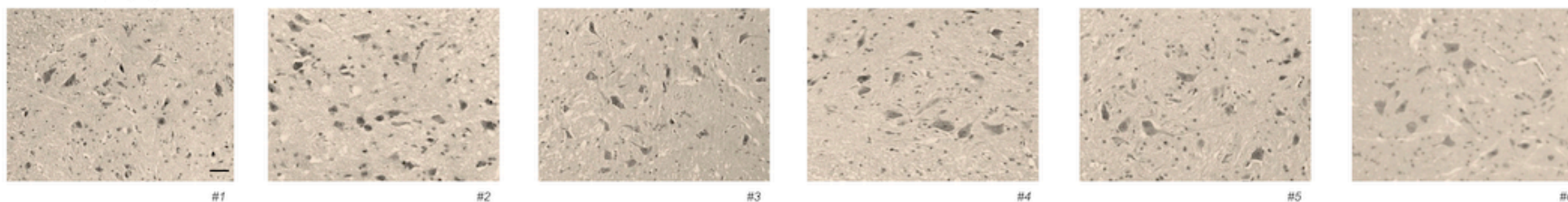
(biological replicates used for histological MN counts, in female treated mice at the high dose of CTEP 2mg/kg/48h)

Supporting material at the figure 6

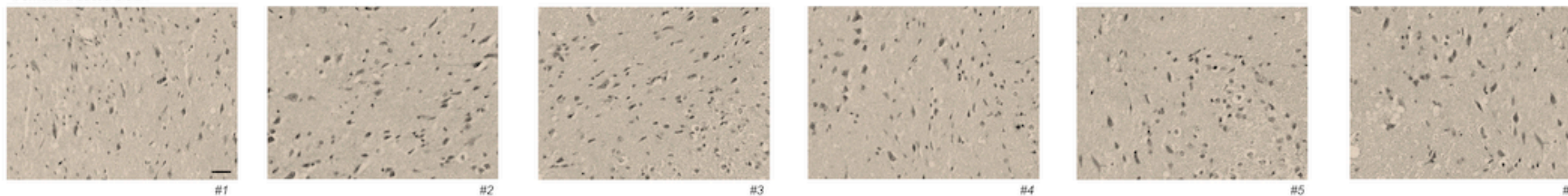
Vehicle-treated WT



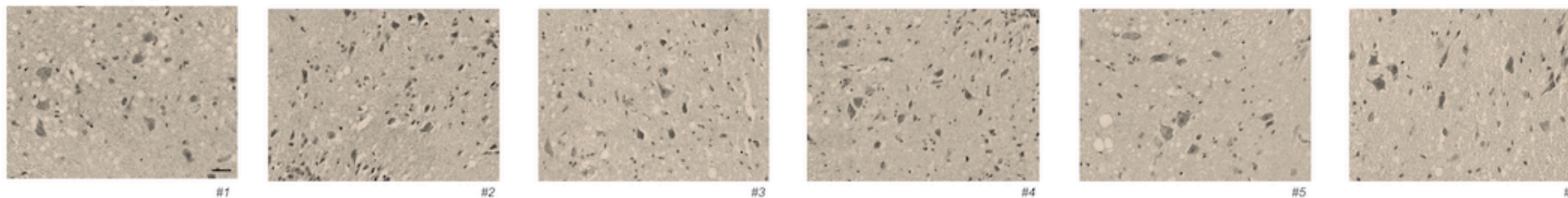
CTEP-treated (2mg/kg) WT



Vehicle-treated SOD1^{G93A}



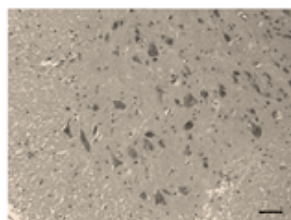
CTEP-treated (2mg/kg) SOD1^{G93A}



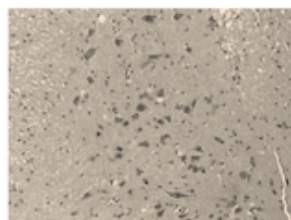
Supporting material for Reviewers only

(biological replicates used for histological MN counts, in male treated mice at the high dose of CTEP 4mg/kg/24h)

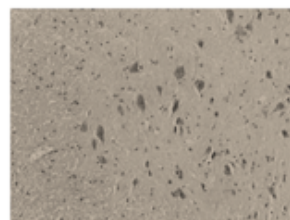
Vehicle-treated WT



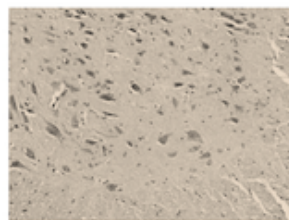
#1



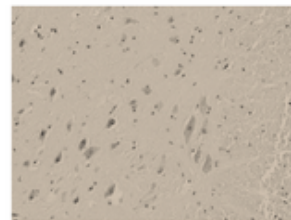
#2



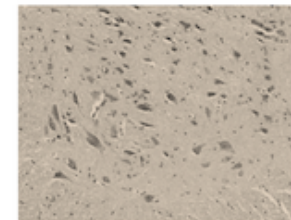
#3



#4

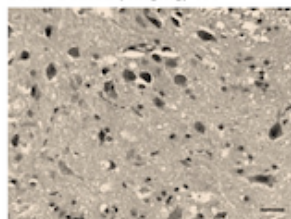


#5

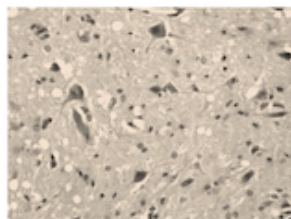


#6

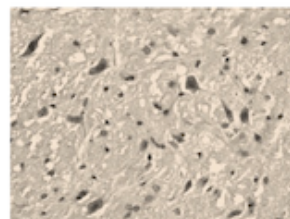
CTEP-treated (4mg/kg) WT



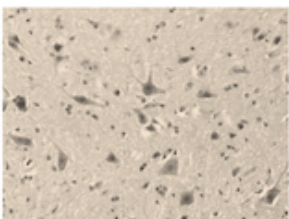
#1



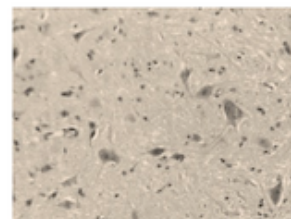
#2



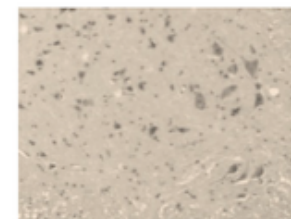
#3



#4

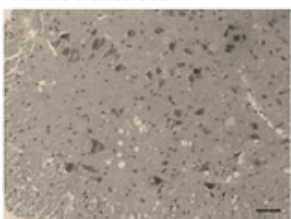


#5

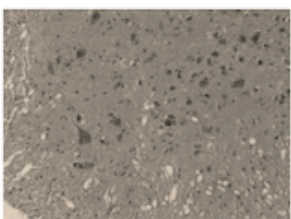


#6

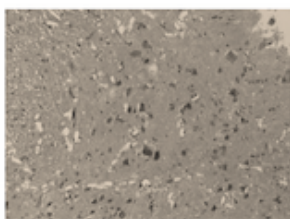
Vehicle-treated SOD1^{G93A}



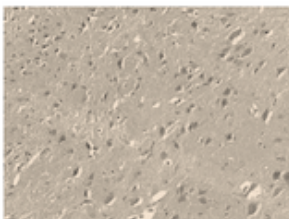
#1



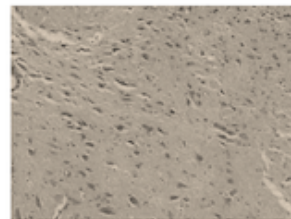
#2



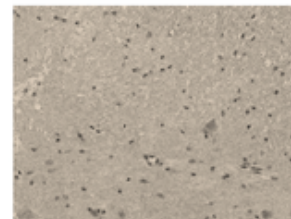
#3



#4

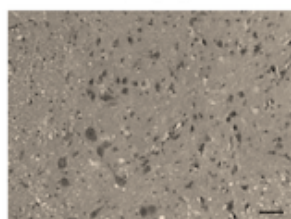


#5

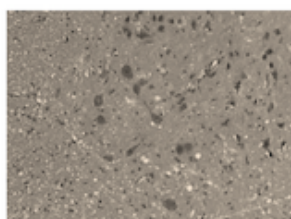


#6

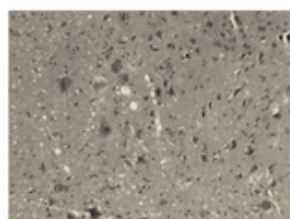
CTEP-treated (4mg/kg) SOD1^{G93A}



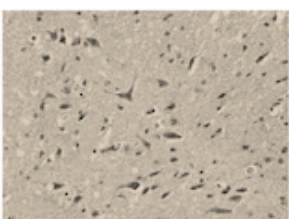
#1



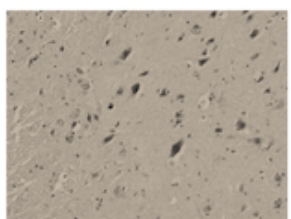
#2



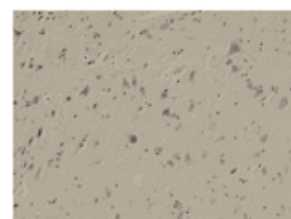
#3



#4



#5

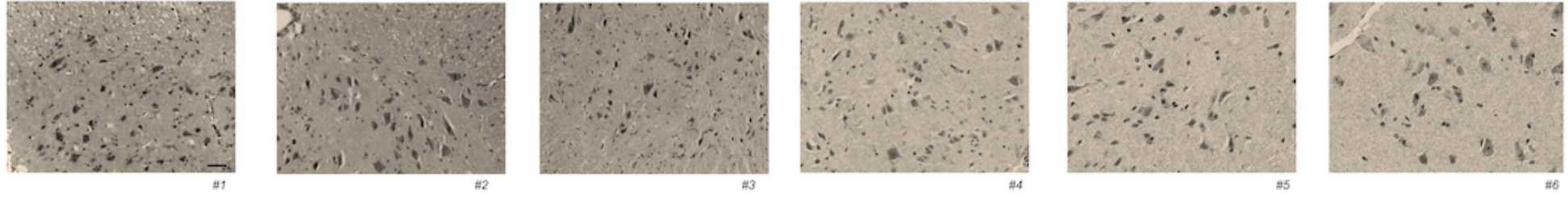


#6

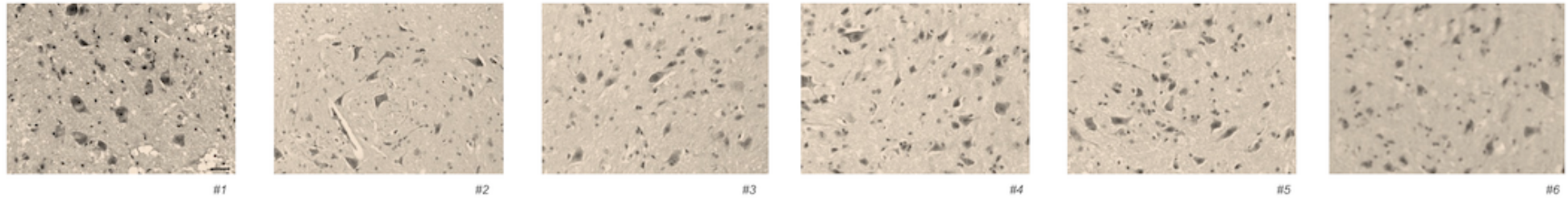
Supporting material for Reviewers only

(biological replicates used for histological MN counts, in female treated mice at the high dose of CTEP 4mg/kg/24h)

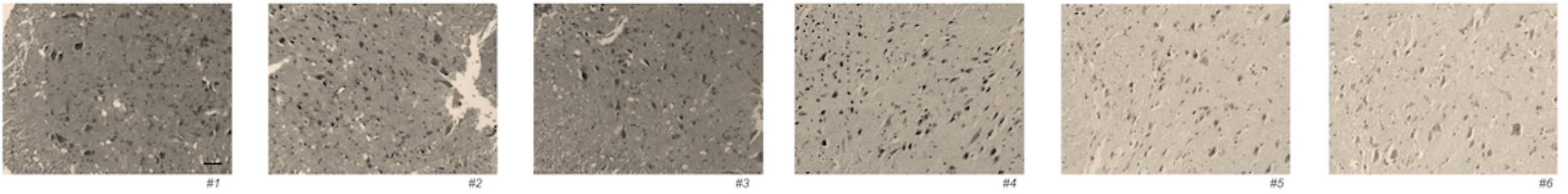
Vehicle-treated WT



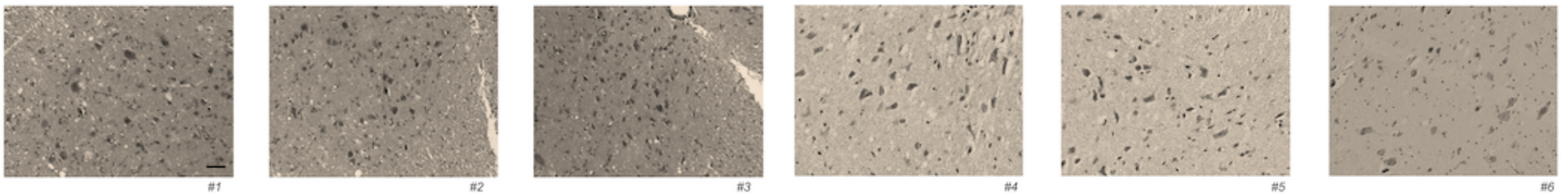
CTEP-treated (4mg/kg) WT



Vehicle-treated SOD1^{G93A}



CTEP-treated (4mg/kg) SOD1^{G93A}

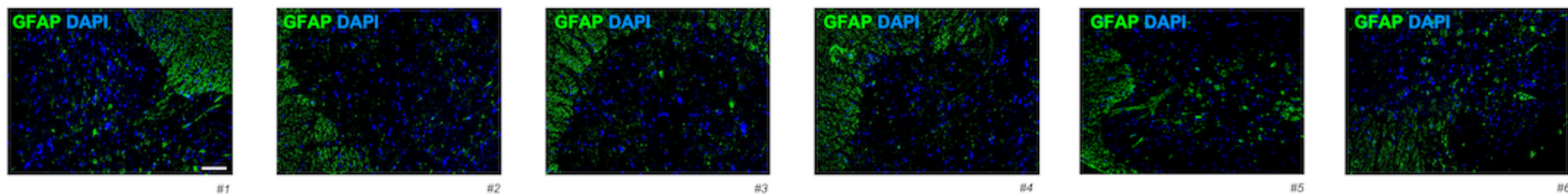


Supporting material for Reviewers only

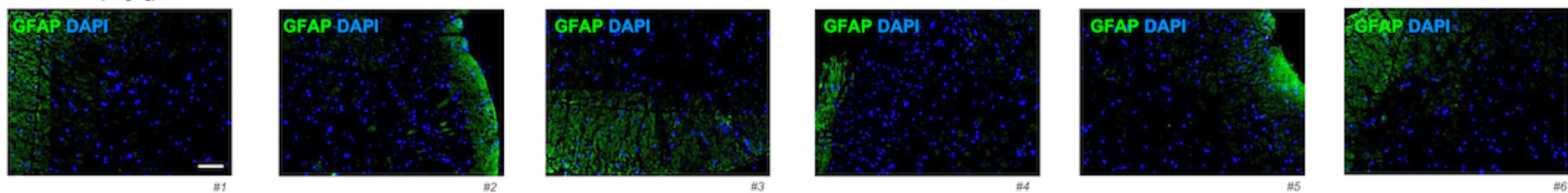
(biological replicates used for quantification analyses of GFAP immunostaining, in male treated mice at the low dose of CTEP 2mg/kg/48h)

Supporting material at the figure 6

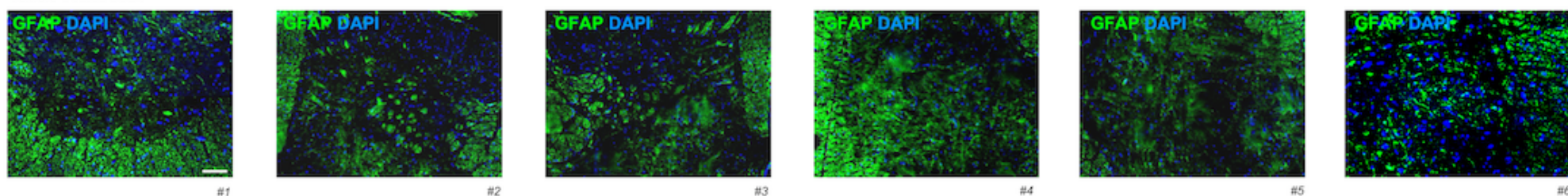
Vehicle-treated WT



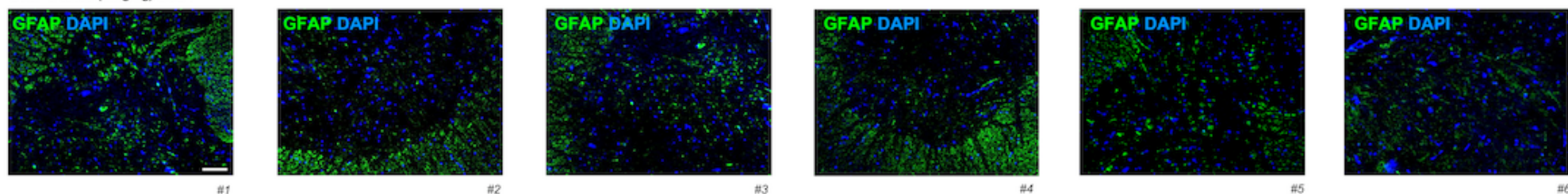
CTEP-treated (2mg/kg) WT



Vehicle-treated SOD1^{G93A}



CTEP-treated (2mg/kg) SOD1^{G93A}

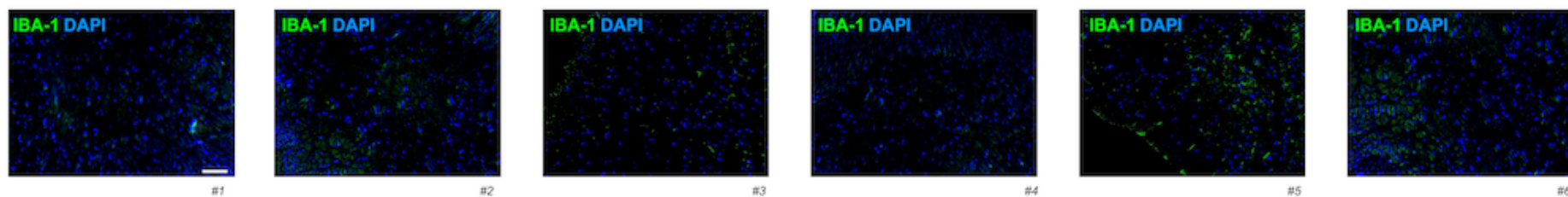


Supporting material for Reviewers only

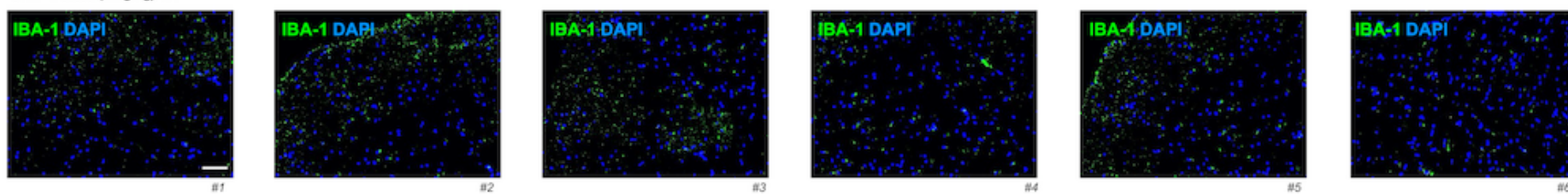
(biological replicates used for quantification analyses of IBA1 immunostaining, in female treated mice at the low dose of CTEP 2mg/kg/48h)

Supporting material at the figure 6

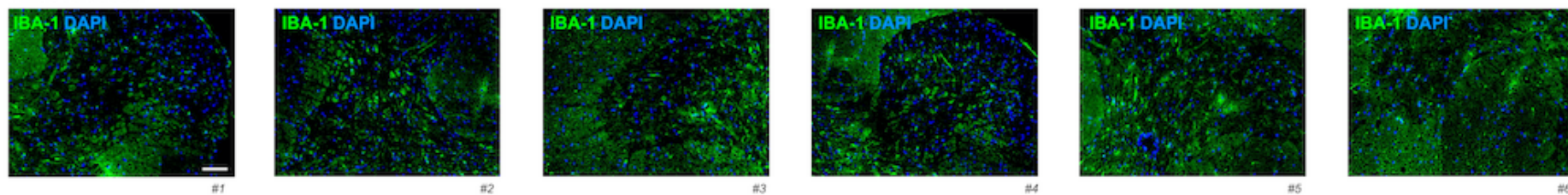
Vehicle-treated WT



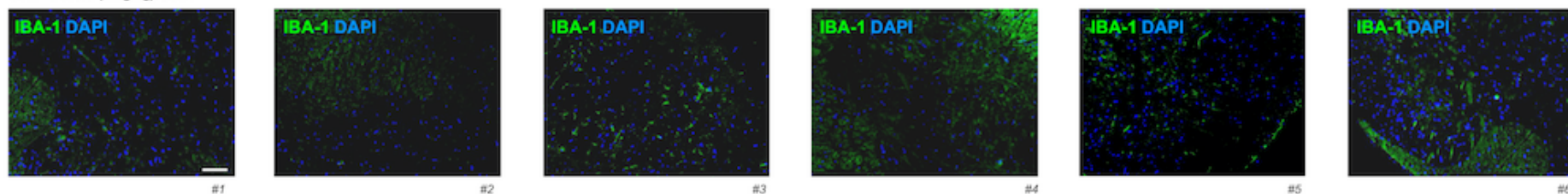
CTEP-treated (2mg/kg) WT



Vehicle-treated SOD1^{G93A}



CTEP-treated (2mg/kg) SOD1^{G93A}

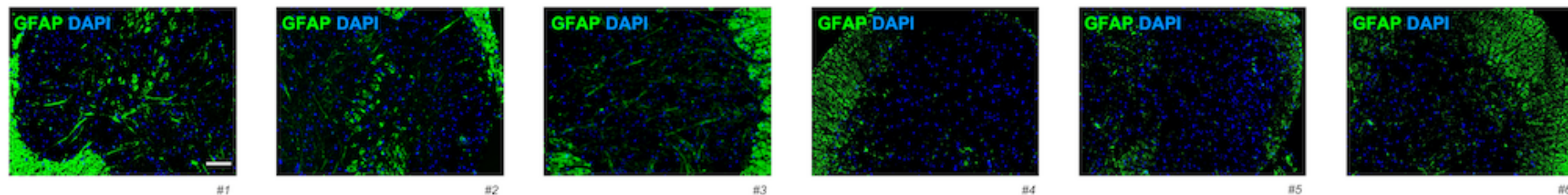


Supporting material for Reviewers only

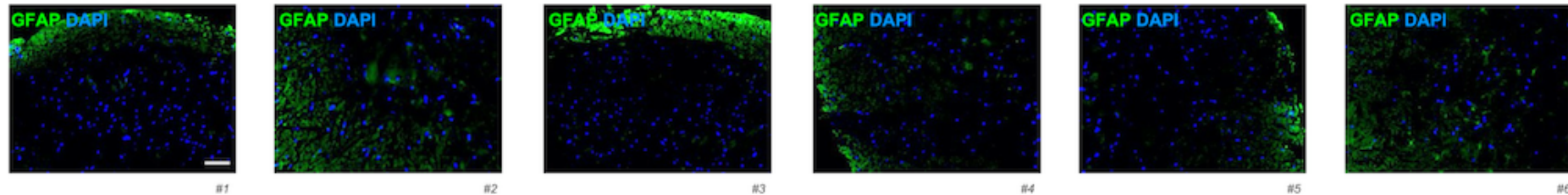
(biological replicates used for quantification analyses of GFAP immunostaining, in male treated mice at the high dose of CTEP 4mg/kg/24h)

Supporting material at the figure 6

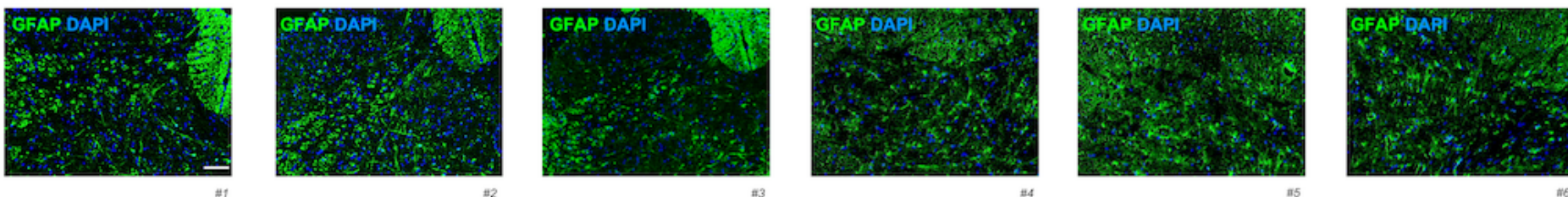
Vehicle-treated WT



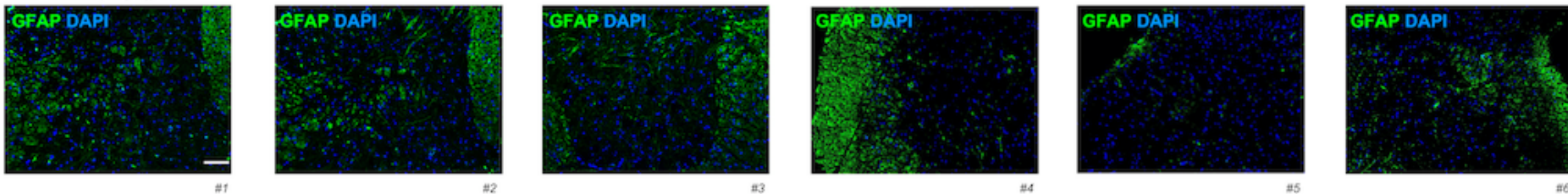
CTEP-treated (4mg/kg) WT



Vehicle-treated SOD1^{G93A}



CTEP-treated (4mg/kg) SOD1^{G93A}

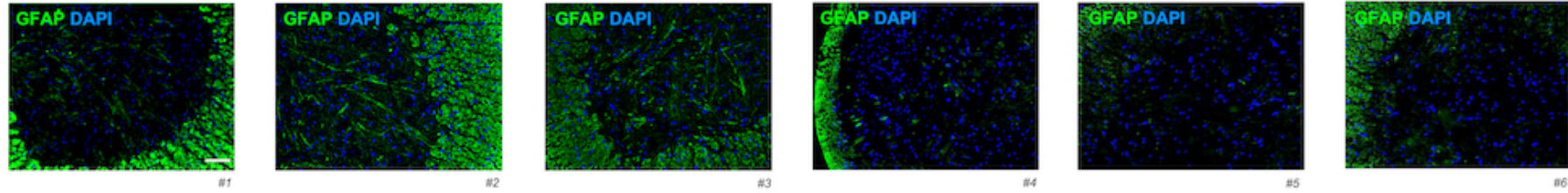


Supporting material for Reviewers only

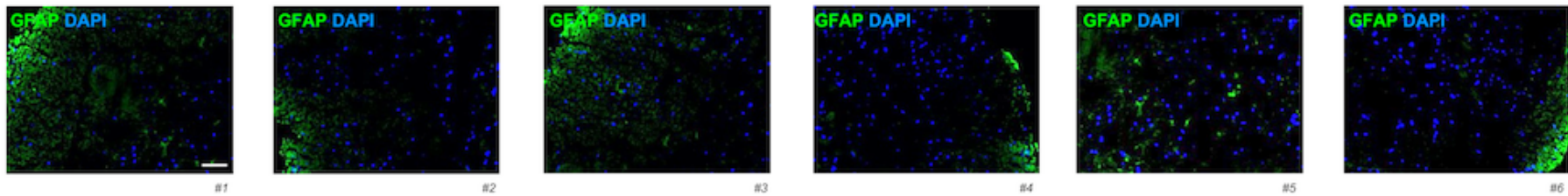
(biological replicates used for quantification analyses of GFAP immunostaining, in female treated mice at the high dose of CTEP 4mg/kg/24h)

Supporting material at the figure 6

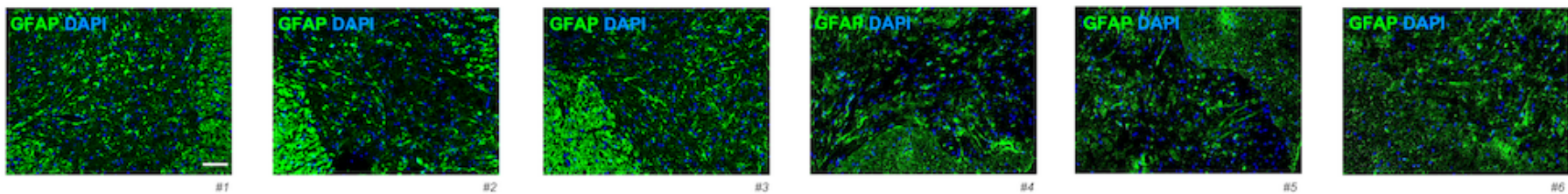
Vehicle-treated WT



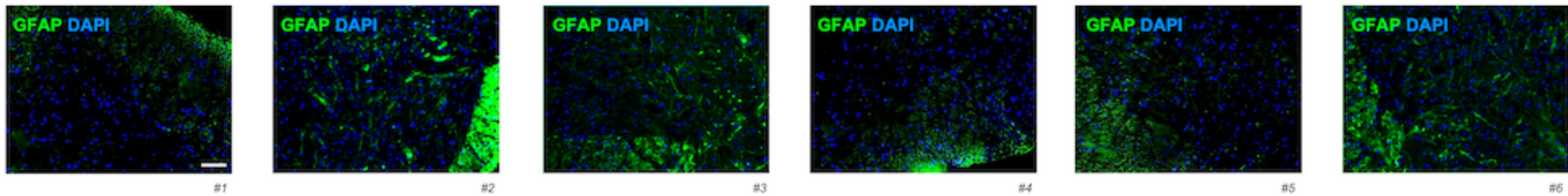
CTEP-treated (4mg/kg) WT



Vehicle-treated SOD1^{G93A}



CTEP-treated (4mg/kg) SOD1^{G93A}

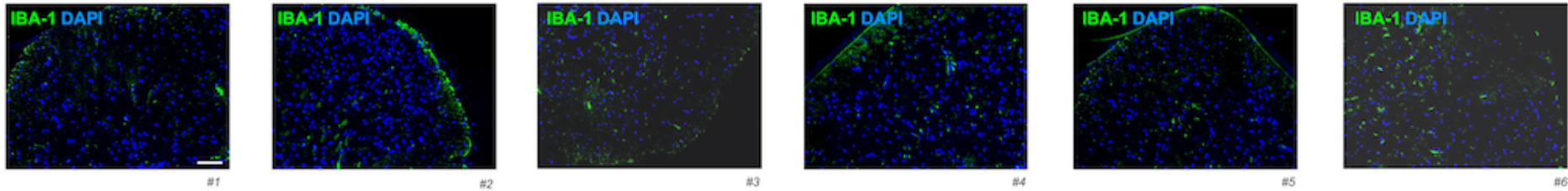


Supporting material for Reviewers only

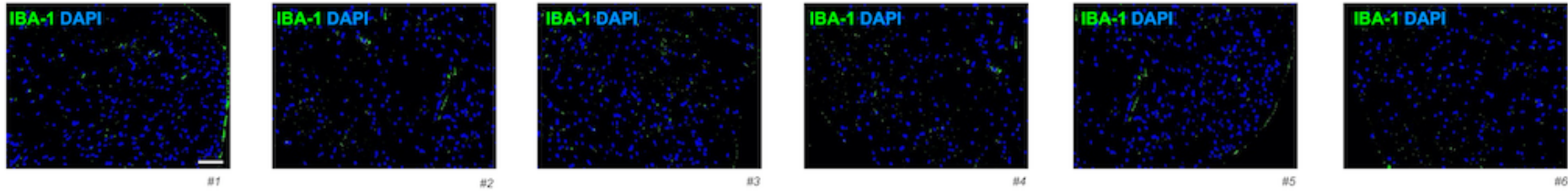
(biological replicates used for quantification analyses of IBA1 immunostaining, in male treated mice at the low dose of CTEP 2mg/kg/48h)

Supporting material at the figure 6

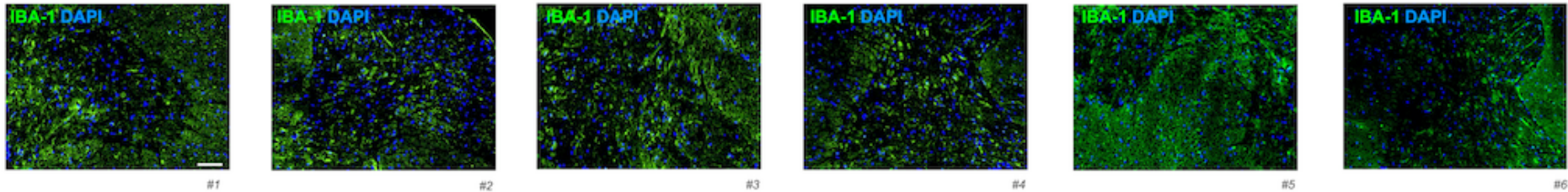
Vehicle-treated WT



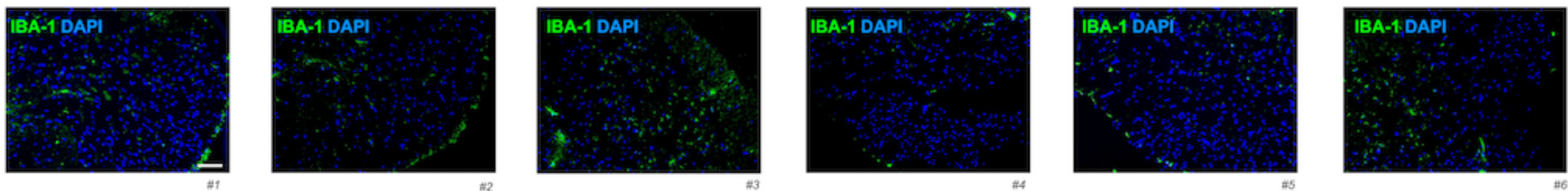
CTEP-treated (2mg/kg) WT



Vehicle-treated SOD1^{G93A}



CTEP-treated (4mg/kg) SOD1^{G93A}

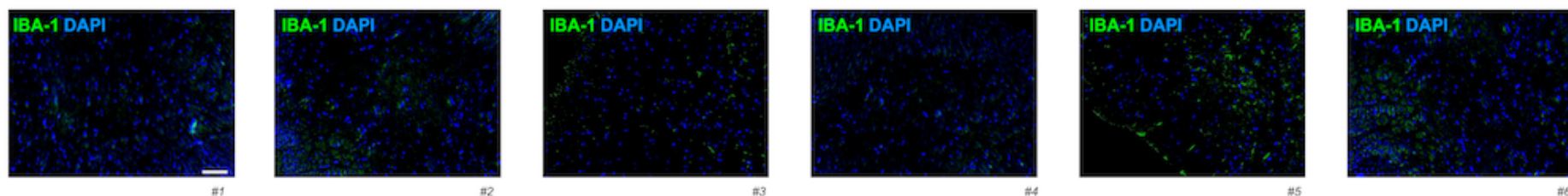


Supporting material for Reviewers only

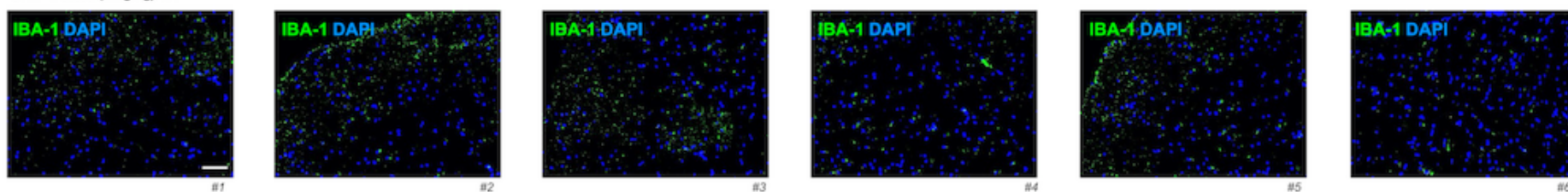
(biological replicates used for quantification analyses of IBA1 immunostaining, in female treated mice at the low dose of CTEP 2mg/kg/48h)

Supporting material at the figure 6

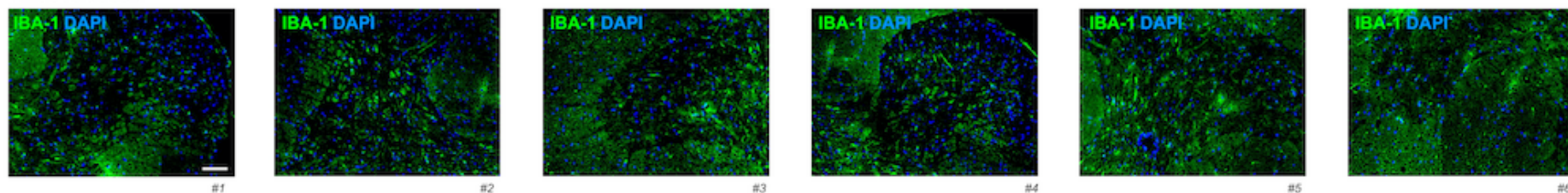
Vehicle-treated WT



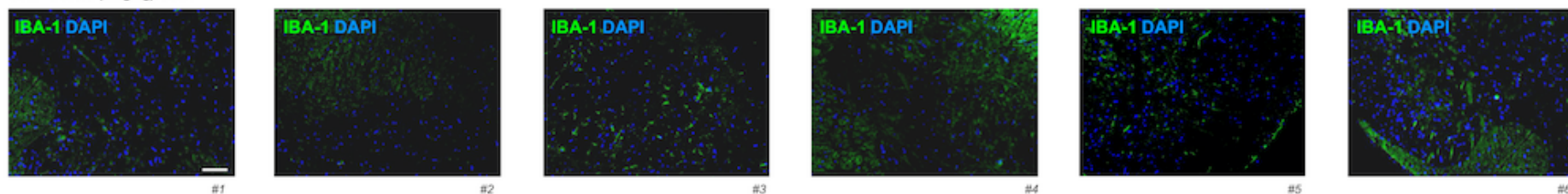
CTEP-treated (2mg/kg) WT



Vehicle-treated SOD1^{G93A}



CTEP-treated (2mg/kg) SOD1^{G93A}

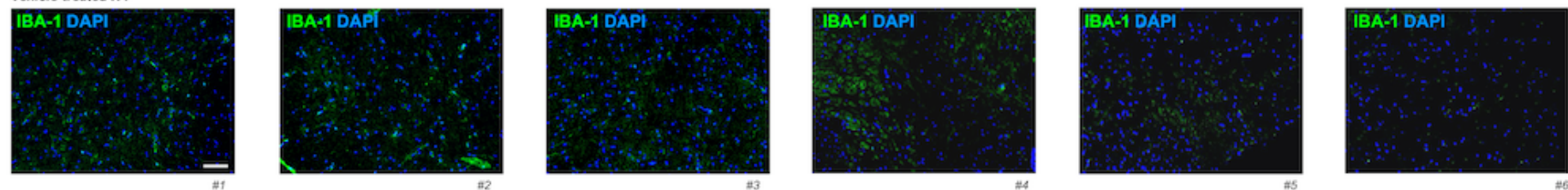


Supporting material for Reviewers only

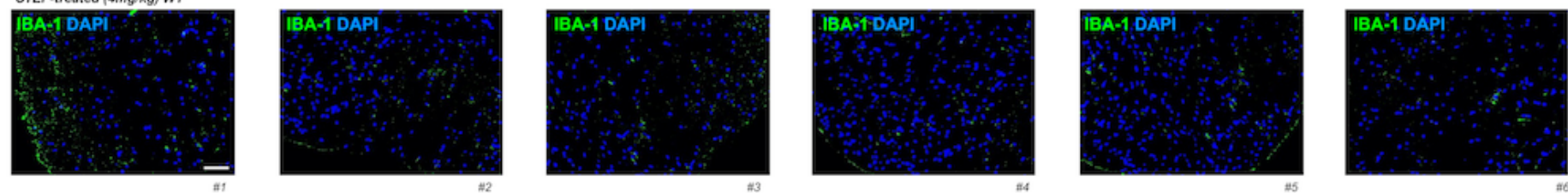
(biological replicates used for quantification analyses of IBA1 immunostaining, in male treated mice at the high dose of CTEP 4mg/kg/24h)

Supporting material at the figure 6

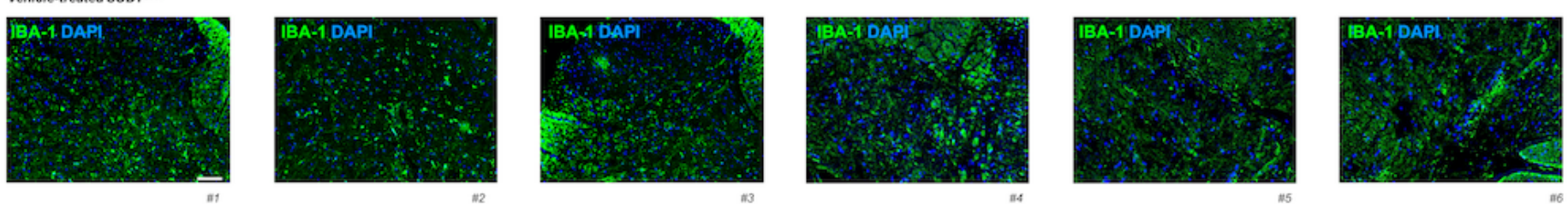
Vehicle-treated WT



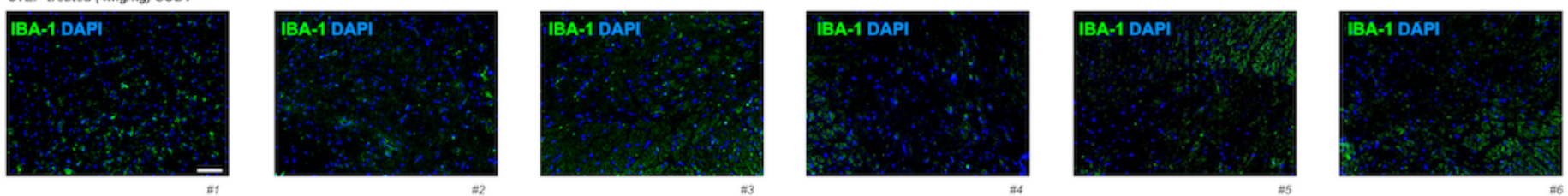
CTEP-treated (4mg/kg) WT



Vehicle-treated SOD1^{G93A}



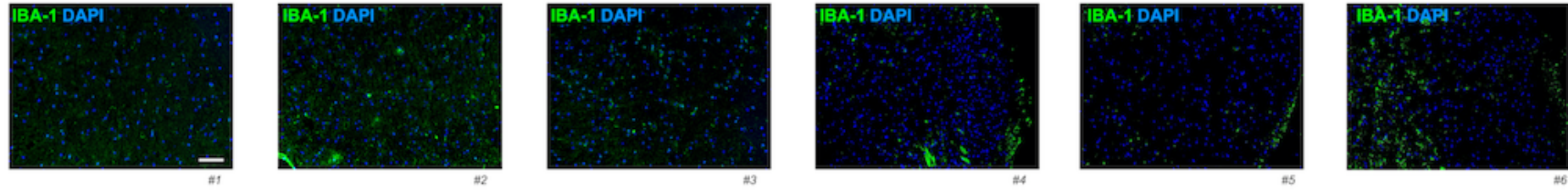
CTEP-treated (4mg/kg) SOD1^{G93A}



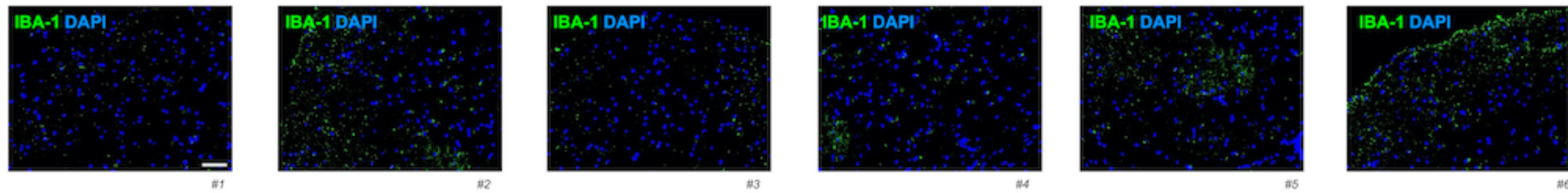
Supporting material for Reviewers only

(biological replicates used for quantification analyses of IBA1 immunostaining, in female treated mice at the high dose of CTEP 4mg/kg/24h)

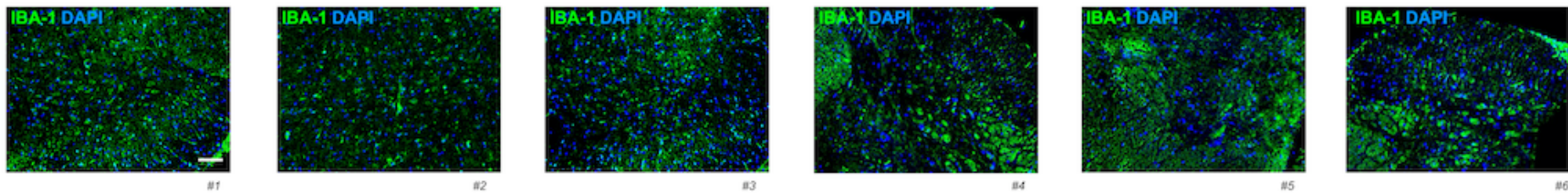
Vehicle-treated WT



CTEP-treated (4mg/kg) WT



Vehicle-treated SOD1^{G93A}



CTEP-treated (4mg/kg) SOD1^{G93A}

