

Experiment Information

Name Jeffrey 12/4/2018 2:08:31 PM
 Date 12/4/2018 2:08:31 PM
 Model Type LE-SH800SZFCPL
 Serial Number 1800024
 Investigator
 Operator
 Memo

Sample Group Information

Name Sample Group - 1
 Species
 Cell Type
 Memo

Measurement Settings

Parameter Settings

Parameter	Marker	Fluorochrome	Acquisition Select		
			Area	Height	Width
FSC	---	---	✓	✓	✓
BSC	---	---	✓		
FL1		Brilliant Violet 421			
FL2		EGFP	✓		
FL3		mCherry	✓		
FL4		APC			
FL5		PerCP-Cy5.5			
FL6		live/dead	✓		

Compensation Settings

Spillover Matrix (%)

Fluorochrome	Detector		
	EGFP	mCherry	live/dead
EGFP	100.00	4.66	0.00
mCherry	26.06	100.00	0.00
live/dead	0.00	0.00	100.00

Negative Value

Parameter	Detector		
	EGFP	mCherry	live/dead
Area	0	0	0
Height	0	0	0

Tube Information

Name DM MTZ\$~\$IsNew
 Sample ID1
 Sample ID2
 Sample ID3
 Sample ID4

Basic Information

Description
 Model Type LE-SH800SZFCPL
 Serial Number 1800024
 Chip Type Sorting Chip
 Chip ID 00040347-0000-7027
 Nozzle Size 100 µm





Sample Stop Condition

None

Recording Setting

Type Gated Event Count
 Target Gate Singlets
 Value 30,000

Instrument Setting

Laser	Threshold
 405nm Off	Channel FSC
 488nm On	Value 2.50%
 561nm On	
 638nm On	

Sensor Gain

FSC 16	BSC 42.5%
FL1 40.0%	FL2 40.0%
FL3 40.0%	FL4 40.0%
FL5 40.0%	FL6 42.0%

Sample Pressure 8

AD Advanced Setting

Forward Window Extension 50
 Back Window Extension

Auto Parameters

Droplet Clock	23,100 Hz
Droplet Drive	31.09
Sort Delay	20
Sort Phase	213 deg
Charge	50.0 %
Deflection Left	1,040
Deflection Right	1,088
Enabled Control Breakoff	<input checked="" type="checkbox"/>

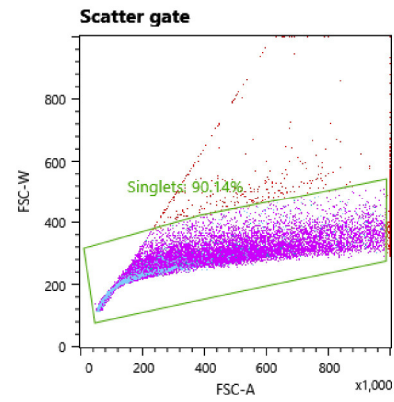
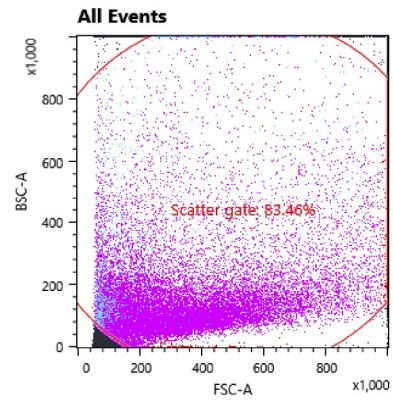
Sorting Setting

Sorting Method 2 Way Tubes



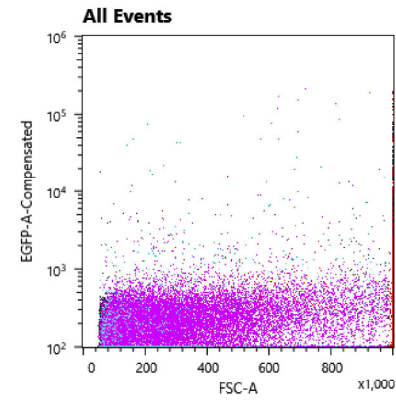
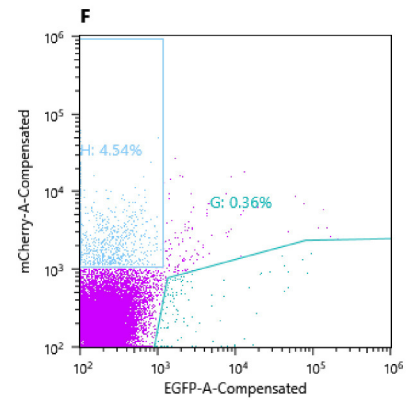
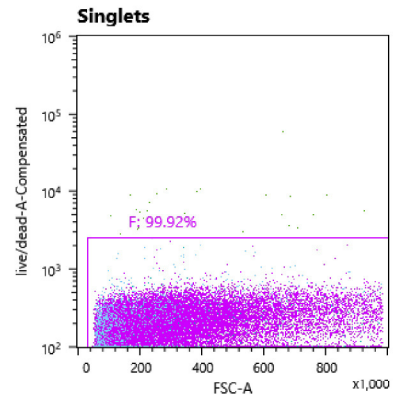
Collection Tube	Sort Gate	Sort Mode	Cell Size	Stop Count
Left	H	Purity	Large Cell	0
Right	G	Purity	Large Cell	0

Worksheet



Gates and Statistics

Name	Events	%Parent	%Total
All Events	39,877	0.00%	100.00%
Scatter gate	33,280	83.46%	83.46%
Singlets	30,000	90.14%	75.23%
F	29,975	99.92%	75.17%
G	109	0.36%	0.27%
H	1,361	4.54%	3.41%



Gates and Statistics

Name	Events	%Parent	%Total
■ All Events	39,877	0.00%	100.00%
■ Scatter gate	33,280	83.46%	83.46%
■ Singlets	30,000	90.14%	75.23%
■ F	29,975	99.92%	75.17%
■ G	109	0.36%	0.27%
■ H	1,361	4.54%	3.41%

Recording Result

Total Record Count: 39,877
Start Time: 12/4/2018 2:26:29 PM
End Time: 12/4/2018 2:26:47 PM

Sorting Result

Sorting Method

2 Way Tubes

Start Time

12/4/2018 2:25:01 PM

End Time

12/4/2018 2:31:00 PM



Collection Tube	Sort Gate	Sort Mode	Elapsed Time	Total Event	Target Ratio	Sorted Count	Sort Rate	Sort Efficiency	Aborted Count	Abort Rate
Left	H	Purity	00:05:59	811,953	3.84%	25,709	71.52eps	82.53%	5,442	15.14eps
Right	G	Purity	00:05:59	811,953	0.24%	1,631	4.54eps	82.63%	338	0.94eps

Experiment Information

Name Jeffrey 12/4/2018 2:08:31 PM
 Date 12/4/2018 2:08:31 PM
 Model Type LE-SH800SZFCPL
 Serial Number 1800024
 Investigator
 Operator
 Memo

Sample Group Information

Name Sample Group - 1
 Species
 Cell Type
 Memo

Measurement Settings

Parameter Settings

Parameter	Marker	Fluorochrome	Acquisition Select		
			Area	Height	Width
FSC	---	---	✓	✓	✓
BSC	---	---	✓		
FL1		Brilliant Violet 421			
FL2		EGFP	✓		
FL3		mCherry	✓		
FL4		APC			
FL5		PerCP-Cy5.5			
FL6		live/dead	✓		

Compensation Settings

Spillover Matrix (%)

Fluorochrome	Detector		
	EGFP	mCherry	live/dead
EGFP	100.00	4.66	0.00
mCherry	26.06	100.00	0.00
live/dead	0.00	0.00	100.00

Negative Value

Parameter	Detector		
	EGFP	mCherry	live/dead
Area	0	0	0
Height	0	0	0

Tube Information

Name DM
 Sample ID1
 Sample ID2
 Sample ID3
 Sample ID4

Basic Information

Description
 Model Type LE-SH800SZFCPL
 Serial Number 1800024
 Chip Type Sorting Chip
 Chip ID 00040347-0000-7027
 Nozzle Size 100 µm





Sample Stop Condition

None

Recording Setting

Type Gated Event Count
 Target Gate Singlets
 Value 10,000

Instrument Setting

Laser	Threshold
 405nm Off	Channel FSC
 488nm On	Value 4.00%
 561nm On	
 638nm On	

Sensor Gain

FSC 16	BSC 42.5%
FL1 40.0%	FL2 40.0%
FL3 40.0%	FL4 40.0%
FL5 40.0%	FL6 42.0%

Sample Pressure 8

AD Advanced Setting

Forward Window Extension 50
 Back Window Extension

Auto Parameters

Droplet Clock	23,100 Hz
Droplet Drive	30.90
Sort Delay	20
Sort Phase	213 deg
Charge	50.0 %
Deflection Left	1,160
Deflection Right	968
Enabled Control Breakoff	<input checked="" type="checkbox"/>

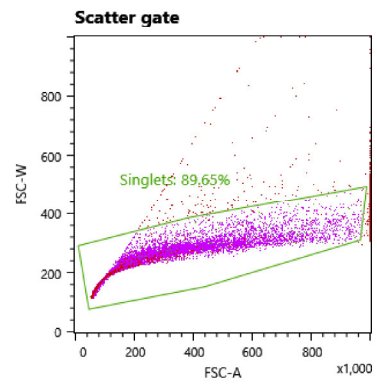
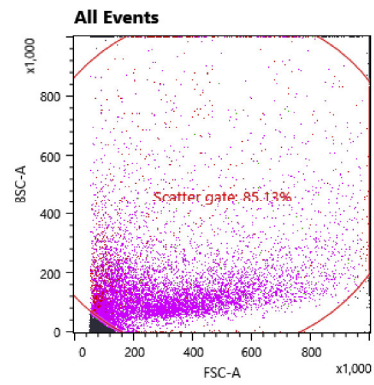
Sorting Setting

Sorting Method 2 Way Tubes



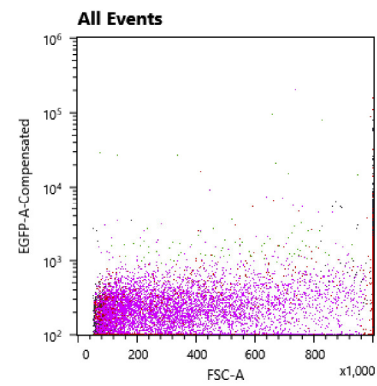
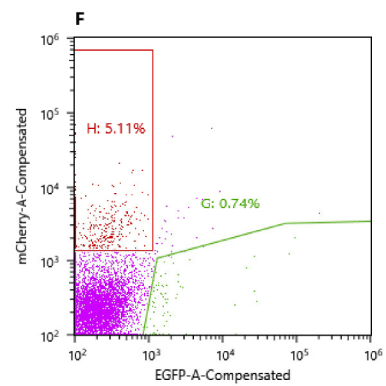
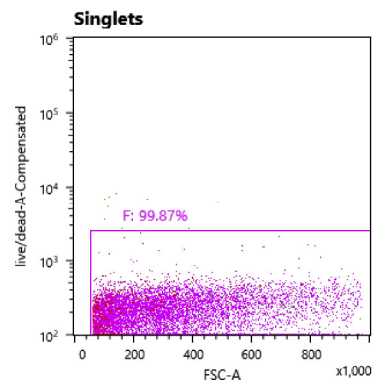
Collection Tube	Sort Gate	Sort Mode	Cell Size	Stop Count
Left	H	Purity	Regular Cell	0
Right	G	Purity	Regular Cell	0

Worksheet



Gates and Statistics

Name	Events	%Parent	%Total
All Events	13,103	0.00%	100.00%
Scatter gate	11,154	85.13%	85.13%
Singlets	10,000	89.65%	76.32%
F	9,987	99.87%	76.22%
G	74	0.74%	0.56%
H	510	5.11%	3.89%



Gates and Statistics

Name	Events	%Parent	%Total
■ All Events	13,103	0.00%	100.00%
■ Scatter gate	11,154	85.13%	85.13%
■ Singlets	10,000	89.65%	76.32%
■ F	9,987	99.87%	76.22%
■ G	74	0.74%	0.56%
■ H	510	5.11%	3.89%

Recording Result

Total Record Count: 13,103
Start Time: 12/4/2018 2:15:46 PM
End Time: 12/4/2018 2:15:57 PM

Sorting Result

Sorting Method

2 Way Tubes

Start Time

12/4/2018 2:14:53 PM

End Time

12/4/2018 2:21:25 PM



Collection Tube	Sort Gate	Sort Mode	Elapsed Time	Total Event	Target Ratio	Sorted Count	Sort Rate	Sort Efficiency	Aborted Count	Abort Rate
Left	H	Purity	00:06:32	805,596	3.15%	21,074	53.75eps	83.02%	4,309	10.99eps
Right	G	Purity	00:06:32	805,596	0.48%	3,203	8.17eps	82.66%	672	1.71eps

Experiment Information

Name Jeffrey 12/4/2018 2:08:31 PM
 Date 12/4/2018 2:08:31 PM
 Model Type LE-SH800SZFCPL
 Serial Number 1800024
 Investigator
 Operator
 Memo

Sample Group Information

Name Sample Group - 1
 Species
 Cell Type
 Memo

Measurement Settings

Parameter Settings			Acquisition Select		
Marker	Fluorochrome	Area	Height	Width	
FSC	---	✓	✓	✓	
BSC	---	✓			
FL1	Brilliant Violet 421				
FL2	EGFP	✓			
FL3	mCherry	✓			
FL4	APC				
FL5	PerCP-Cy5.5				
FL6	live/dead	✓			

Compensation Settings

Spillover Matrix (%)

		Detector		
		EGFP	mCherry	live/dead
Fluorochrome	EGFP	100.00	4.66	0.00
	mCherry	26.06	100.00	0.00
	live/dead	0.00	0.00	100.00

Negative Value

		Detector		
		EGFP	mCherry	live/dead
Area	0	0	0	
Height	0	0	0	

Tube Information

Name Homo - 1\$~\$IsNew
 Sample ID1
 Sample ID2
 Sample ID3
 Sample ID4

Basic Information

Description
 Model Type LE-SH800SZFCPL
 Serial Number 1800024
 Chip Type Sorting Chip
 Chip ID 00040347-0000-7027
 Nozzle Size 100 µm





Sample Stop Condition

None

Recording Setting

Type Gated Event Count
 Target Gate Singlets
 Value 30,000

Instrument Setting

Laser	Threshold
 405nm Off	Channel FSC
 488nm On	Value 2.50%
 561nm On	
 638nm On	

Sensor Gain

FSC	16	BSC	42.5%
FL1	40.0%	FL2	40.0%
FL3	40.0%	FL4	40.0%
FL5	40.0%	FL6	42.0%

Sample Pressure 8

AD Advanced Setting

Forward Window Extension 50
 Back Window Extension

Auto Parameters

Droplet Clock	23,100 Hz
Droplet Drive	31.31
Sort Delay	20
Sort Phase	213 deg
Charge	50.0 %
Deflection Left	1,040
Deflection Right	1,088
Enabled Control Breakoff	<input checked="" type="checkbox"/>

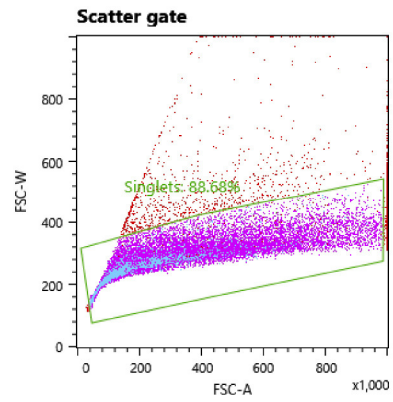
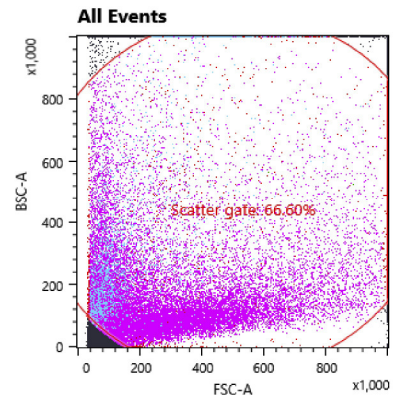
Sorting Setting

Sorting Method 2 Way Tubes



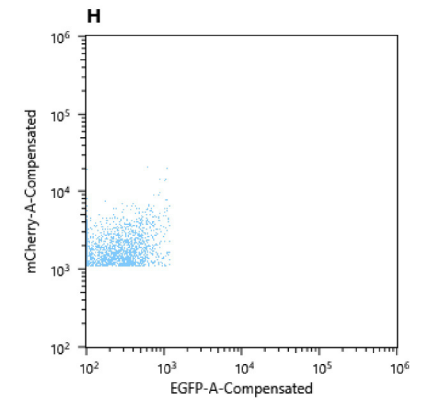
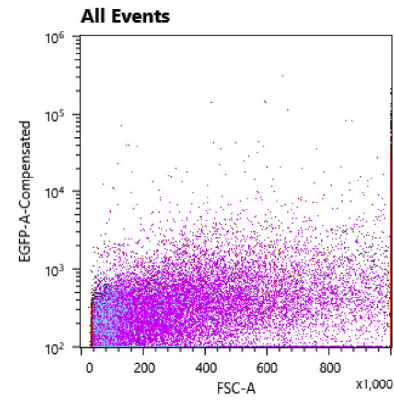
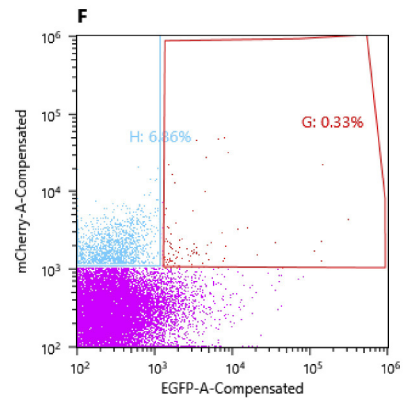
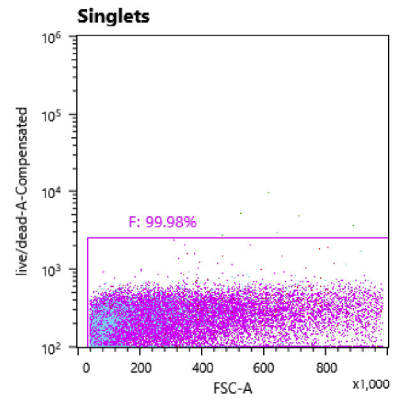
Collection Tube	Sort Gate	Sort Mode	Cell Size	Stop Count
Left	H	Purity	Large Cell	0
Right	G	Purity	Large Cell	0

Worksheet



Gates and Statistics

Name	Events	%Parent	%Total
All Events	50,792	0.00%	100.00%
Scatter gate	33,828	66.60%	66.60%
Singlets	30,000	88.68%	59.06%
F	29,994	99.98%	59.05%
G	99	0.33%	0.19%
H	2,057	6.86%	4.05%



Gates and Statistics

Name	Events	%Parent	%Total
■ All Events	50,792	0.00%	100.00%
■ Scatter gate	33,828	66.60%	66.60%
■ Singlets	30,000	88.68%	59.06%
■ F	29,994	99.98%	59.05%
■ G	99	0.33%	0.19%
■ H	2,057	6.86%	4.05%

Recording Result

Total Record Count: 50,792
Start Time: 12/4/2018 2:41:14 PM
End Time: 12/4/2018 2:41:23 PM

Sorting Result

Sorting Method

2 Way Tubes

Start Time

12/4/2018 2:38:03 PM

End Time

12/4/2018 2:46:43 PM



Collection Tube	Sort Gate	Sort Mode	Elapsed Time	Total Event	Target Ratio	Sorted Count	Sort Rate	Sort Efficiency	Aborted Count	Abort Rate
Left	H	Purity	00:08:39	3,205,799	3.85%	75,409	145.03eps	61.17%	47,877	92.08eps
Right	G	Purity	00:08:39	3,205,799	0.21%	3,964	7.62eps	58.33%	2,832	5.45eps

Experiment Information

Name Jeffrey 12/4/2018 2:08:31 PM
 Date 12/4/2018 2:08:31 PM
 Model Type LE-SH800SZFCPL
 Serial Number 1800024
 Investigator
 Operator
 Memo

Sample Group Information

Name Sample Group - 1
 Species
 Cell Type
 Memo

Measurement Settings

Parameter Settings

Parameter	Marker	Fluorochrome	Acquisition Select		
			Area	Height	Width
FSC	---	---	✓	✓	✓
BSC	---	---	✓		
FL1		Brilliant Violet 421			
FL2		EGFP	✓		
FL3		mCherry	✓		
FL4		APC			
FL5		PerCP-Cy5.5			
FL6		live/dead	✓		

Compensation Settings

Spillover Matrix (%)

Fluorochrome	Detector		
	EGFP	mCherry	live/dead
EGFP	100.00	4.66	0.00
mCherry	26.06	100.00	0.00
live/dead	0.00	0.00	100.00

Negative Value

Parameter	Detector		
	EGFP	mCherry	live/dead
Area	0	0	0
Height	0	0	0

Tube Information

Name Homo - MTZ\$~\$IsNew
 Sample ID1
 Sample ID2
 Sample ID3
 Sample ID4

Basic Information

Description
 Model Type LE-SH800SZFCPL
 Serial Number 1800024
 Chip Type Sorting Chip
 Chip ID 00040347-0000-7027
 Nozzle Size 100 µm





Sample Stop Condition

None

Recording Setting

Type Gated Event Count
 Target Gate Singlets
 Value 30,000

Instrument Setting

Laser	Threshold
 405nm Off	Channel FSC
 488nm On	Value 2.50%
 561nm On	
 638nm On	

Sensor Gain

FSC	16	BSC	39.5%
FL1	40.0%	FL2	40.0%
FL3	40.0%	FL4	40.0%
FL5	40.0%	FL6	42.0%

Sample Pressure 8

AD Advanced Setting

Forward Window Extension 50
 Back Window Extension

Auto Parameters

Droplet Clock	23,100 Hz
Droplet Drive	31.48
Sort Delay	20
Sort Phase	213 deg
Charge	50.0 %
Deflection Left	1,040
Deflection Right	1,088
Enabled Control Breakoff	<input checked="" type="checkbox"/>

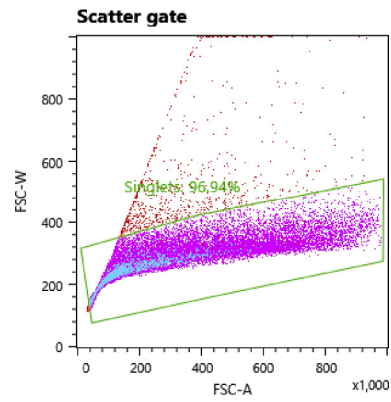
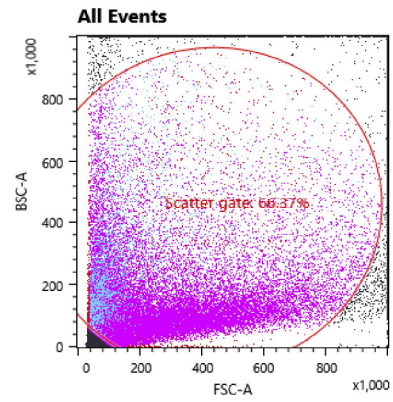
Sorting Setting

Sorting Method 2 Way Tubes



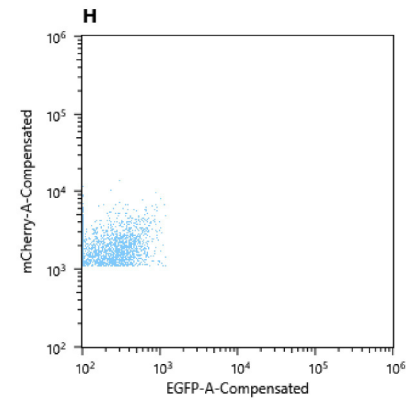
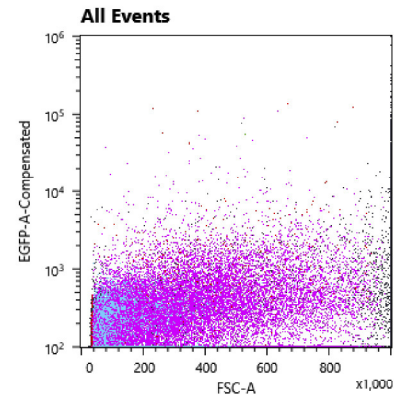
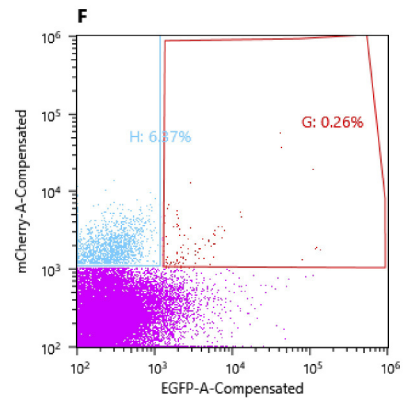
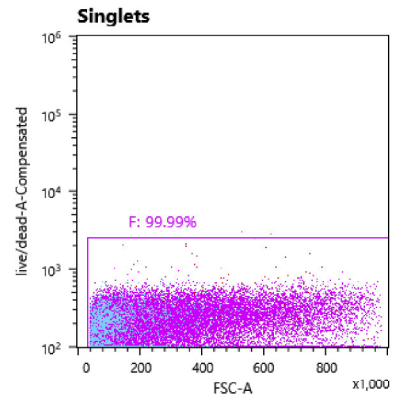
Collection Tube	Sort Gate	Sort Mode	Cell Size	Stop Count
Left	H	Purity	Large Cell	0
Right	G	Purity	Large Cell	0

Worksheet



Gates and Statistics

Name	Events	%Parent	%Total
All Events	58,660	0.00%	100.00%
Scatter gate	38,935	66.37%	66.37%
Singlets	37,744	96.94%	64.34%
F	37,742	99.99%	64.34%
G	97	0.26%	0.17%
H	2,405	6.37%	4.10%



Gates and Statistics

Name	Events	%Parent	%Total
■ All Events	58,660	0.00%	100.00%
■ Scatter gate	38,935	66.37%	66.37%
■ Singlets	37,744	96.94%	64.34%
■ F	37,742	99.99%	64.34%
■ G	97	0.26%	0.17%
■ H	2,405	6.37%	4.10%

Recording Result

Total Record Count: 58,660
Start Time: 12/4/2018 2:50:08 PM
End Time: 12/4/2018 2:50:19 PM

Sorting Result

Sorting Method

2 Way Tubes

Start Time

12/4/2018 2:49:05 PM

End Time

12/4/2018 2:56:31 PM



Collection Tube	Sort Gate	Sort Mode	Elapsed Time	Total Event	Target Ratio	Sorted Count	Sort Rate	Sort Efficiency	Aborted Count	Abort Rate
Left	H	Purity	00:07:26	2,468,291	4.43%	72,067	161.42eps	65.91%	37,277	83.50eps
Right	G	Purity	00:07:26	2,468,291	0.24%	3,909	8.76eps	65.15%	2,091	4.68eps

Experiment Information

Name Jeffrey 12/4/2018 2:08:31 PM
 Date 12/4/2018 2:08:31 PM
 Model Type LE-SH800SZFCPL
 Serial Number 1800024
 Investigator
 Operator
 Memo

Sample Group Information

Name Sample Group - 1
 Species
 Cell Type
 Memo

Measurement Settings

Parameter Settings

Parameter	Marker	Fluorochrome	Acquisition Select		
			Area	Height	Width
FSC	---	---	✓	✓	✓
BSC	---	---	✓		
FL1		Brilliant Violet 421			
FL2		EGFP	✓		
FL3		mCherry	✓		
FL4		APC			
FL5		PerCP-Cy5.5			
FL6		live/dead	✓		

Compensation Settings

Spillover Matrix (%)

Fluorochrome	Detector		
	EGFP	mCherry	live/dead
EGFP	100.00	4.66	0.00
mCherry	26.06	100.00	0.00
live/dead	0.00	0.00	100.00

Negative Value

Parameter	Detector		
	EGFP	mCherry	live/dead
Area	0	0	0
Height	0	0	0

Tube Information

Name Homo\$~\$IsNew
 Sample ID1
 Sample ID2
 Sample ID3
 Sample ID4

Basic Information

Description
 Model Type LE-SH800SZFCPL
 Serial Number 1800024
 Chip Type Sorting Chip
 Chip ID 00040347-0000-7027
 Nozzle Size 100 µm





Sample Stop Condition

None

Recording Setting

Type Gated Event Count
 Target Gate Singlets
 Value 30,000

Instrument Setting

Laser	Threshold
 405nm Off	Channel FSC
 488nm On	Value 2.50%
 561nm On	
 638nm On	

Sensor Gain

FSC 16	BSC 42.5%
FL1 40.0%	FL2 40.0%
FL3 40.0%	FL4 40.0%
FL5 40.0%	FL6 42.0%

Sample Pressure 8

AD Advanced Setting

Forward Window Extension 50
 Back Window Extension

Auto Parameters

Droplet Clock	23,100 Hz
Droplet Drive	31.28
Sort Delay	20
Sort Phase	213 deg
Charge	50.0 %
Deflection Left	1,040
Deflection Right	1,088
Enabled Control Breakoff	<input checked="" type="checkbox"/>

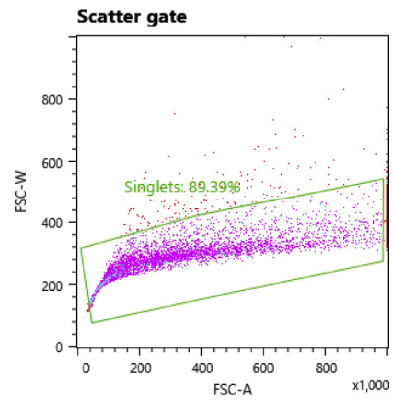
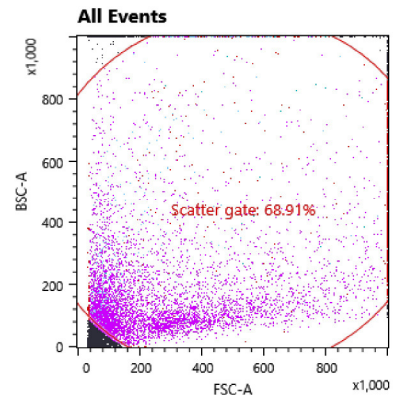
Sorting Setting

Sorting Method 2 Way Tubes



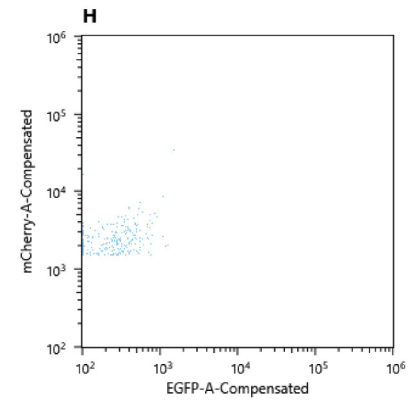
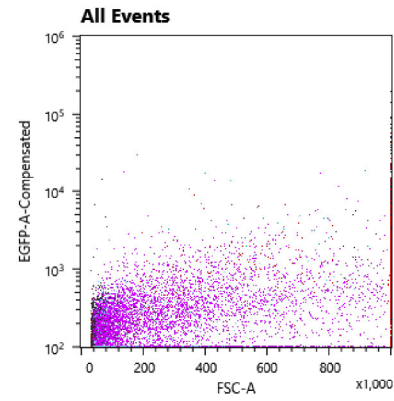
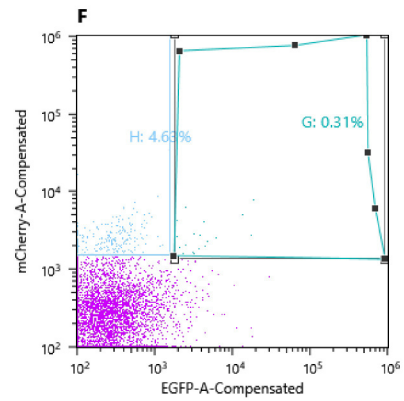
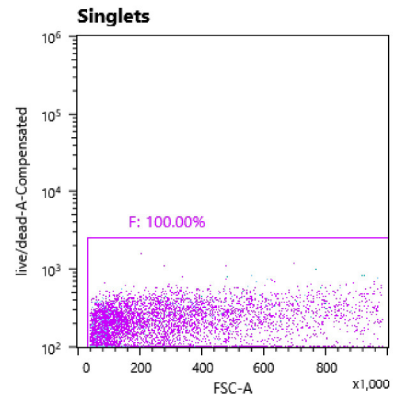
Collection Tube	Sort Gate	Sort Mode	Cell Size	Stop Count
Left	H	Purity	Large Cell	0
Right	G	Purity	Large Cell	0

Worksheet



Gates and Statistics

Name	Events	%Parent	%Total
All Events	10,000	0.00%	100.00%
Scatter gate	6,891	68.91%	68.91%
Singlets	6,160	89.39%	61.60%
F	6,160	100.00%	61.60%
G	19	0.31%	0.19%
H	285	4.63%	2.85%



Gates and Statistics

Name	Events	%Parent	%Total
■ All Events	10,000	0.00%	100.00%
■ Scatter gate	6,891	68.91%	68.91%
■ Singlets	6,160	89.39%	61.60%
■ F	6,160	100.00%	61.60%
■ G	19	0.31%	0.19%
■ H	285	4.63%	2.85%

Sorting Result

Sorting Method

2 Way Tubes

Start Time

12/4/2018 2:35:24 PM

End Time

12/4/2018 2:36:06 PM



Collection Tube	Sort Gate	Sort Mode	Elapsed Time	Total Event	Target Ratio	Sorted Count	Sort Rate	Sort Efficiency	Aborted Count	Abort Rate
Left	H	Purity	00:00:41	138,740	6.25%	6,454	154.96eps	74.48%	2,211	53.09eps
Right	G	Purity	00:00:41	138,740	49.99%	58,395	1,402.07eps	84.20%	10,956	263.06eps