

Supplemental Information

RecA is required for the assembly of RecN into DNA repair complexes on the nucleoid

Emma K. McLean[†], Justin S. Lenhart^{†#}, and Lyle A. Simmons^{*}

Department of Molecular, Cellular and Developmental Biology, University of Michigan, Ann Arbor, MI 48109, USA

[†] These authors contributed equally

[#] Present address: Agilent Technologies, Inc. 5301 Stevens Creek Blvd Santa Clara, CA 95051

^{*}To whom correspondence should be addressed: Department of Molecular, Cellular, and Developmental Biology, University of Michigan, Ann Arbor, Michigan 48109-1055, United States. Phone: (734) 647-2016, Fax: (734) 615-6337

E-mail: lasimm@umich.edu

Running Title: Running title: RecA recruits RecN

Keywords: Double-strand break repair, end processing, RecA, RecN

Table S1. Strains

Strain	Characteristics	Source
PY79	Prototroph SP β^0	(59)
ERB78	<i>recO::cat</i> (cm ^r)	(9)
LAS40	<i>recA-gfpmut2</i>	(65)
JSL327	<i>recN::tet</i>	This work
JSL486	<i>recN-23-mgfpmut3</i> (cm ^r)	This work
JSL513	<i>mgfpmut3-22-recN</i> (cm ^r)	This work
JSL537	<i>recA::cat</i> (cm ^r)	This work
JSL539	<i>recN::recN-23-mgfpmut3</i> (cm ^r), <i>recA::spc</i> (spc ^r)	This work
JSL552	<i>recJ::erm</i>	This work
JSL553	<i>addA::erm</i>	This work
JSL555	<i>addB::erm</i>	This work
JSL594	Δ <i>recJ</i>	This work
JSL569	<i>recA::recA-gfpmut2</i> ; <i>addA::erm</i>	This work
JSL600	Δ <i>recJ</i> , <i>recA-gfpmut2</i> (spc ^r)	This work
JSL608	<i>recN::erm</i>	This work
JSL631	<i>recA::recA-gfpmut2</i> , Δ <i>recJ</i> , <i>addA::erm</i>	This work
JSL612	Δ <i>recJ</i> , <i>addA::erm</i>	This work
EKM30	<i>recN::recN-23-mgfpmut3</i> (cm ^r); <i>addA::erm</i>	This work
EKM31	<i>recN::recN-23-mgfpmut3</i> (cm ^r); <i>addB::erm</i>	This work

All strains are derivatives of PY79.

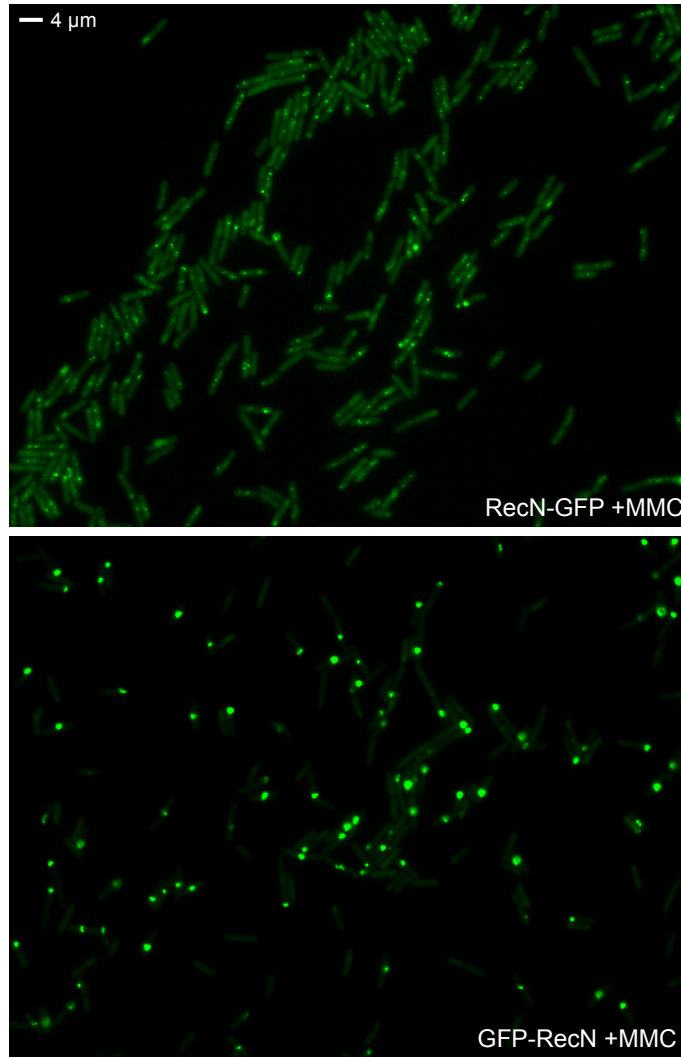


Figure S1. Representative images of cells expressing RecN-GFP or GFP-RecN following addition of MMC. Only the GFP channel is shown.

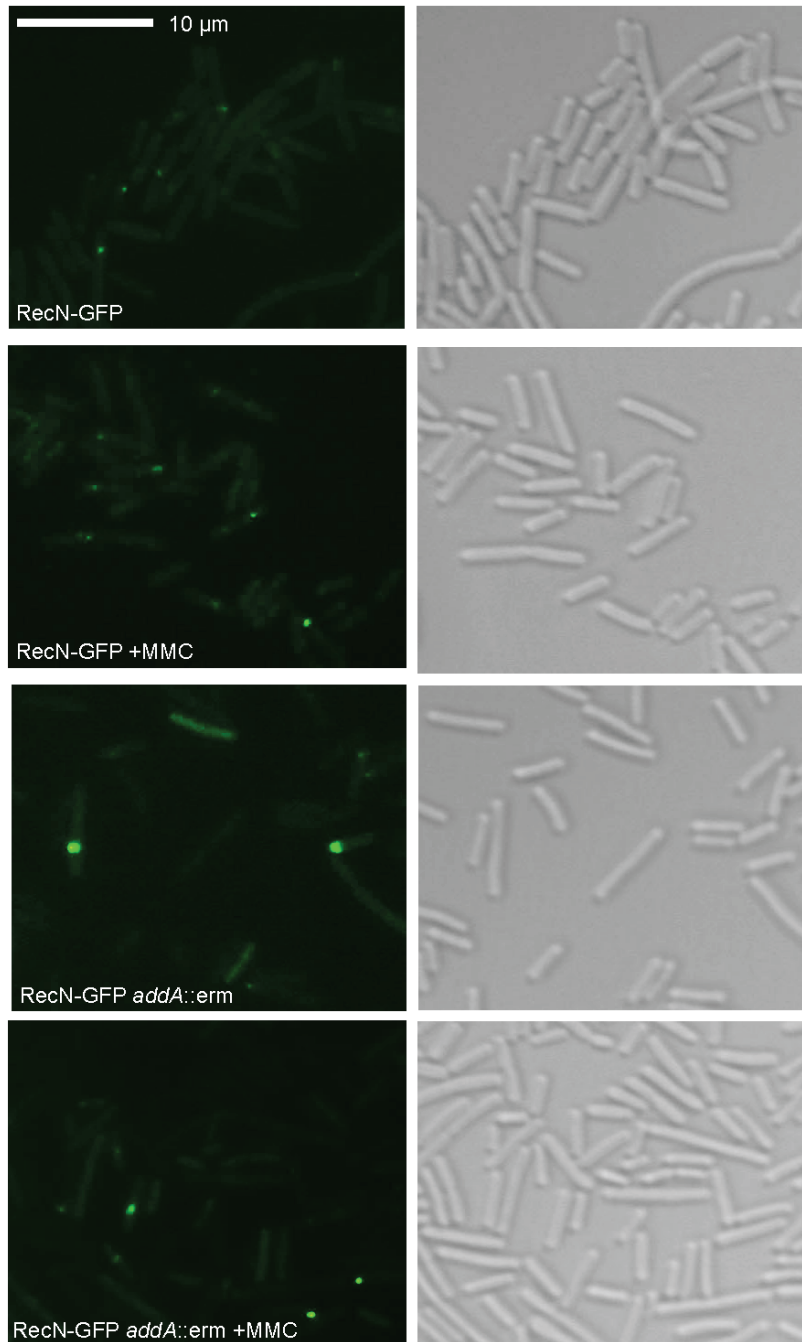


Figure S2. RecN-GFP forms large complexes near the cell periphery in cells lacking AddAB. The left column shows the GFP image and the right column shows the corresponding DIC image. The complexes that do form in the *addA::erm* background appear bright relative to the foci with AddAB intact.