

SUPPLEMENTARY MATERIAL

FIGURES

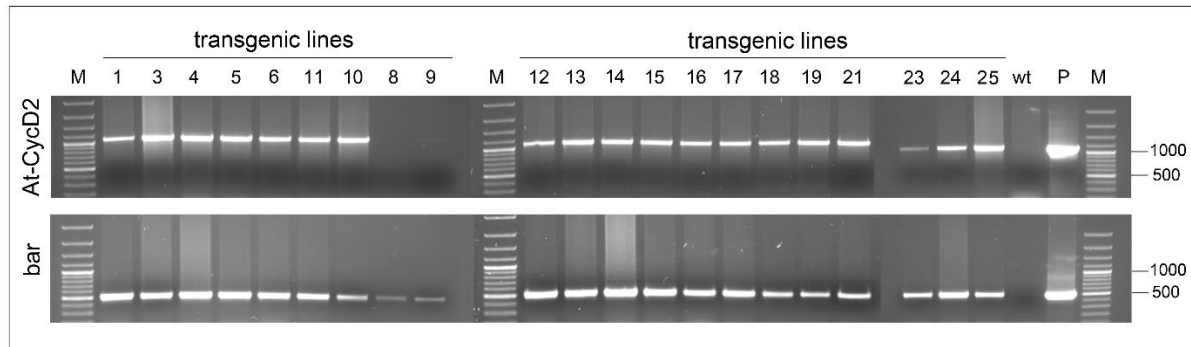


Figure S1. Verification of *At-CycD2* transgenic plants by PCR analysis. Genomic DNA from PPT resistant T₀ plants (1, 3, 4, 5, 6, 8, 9, 10, 11, 12, 13, 14, 15, 16, 17, 18, 19, 21, 23, 24 and 25) was subjected to PCR analysis using the *At-CycD2*-forw/*At-CycD2*-rev and Bar-forw/Bar-rev primers specific to the *At-CycD2* and *bar* genes, respectively. The *At-CycD2* primers amplify a 1070 bp fragment of the corresponding gene, whereas the *bar* primers produce a 503 bp fragment. DNAs of non-transgenic *N. benthamiana* plant (wt) and plasmid pLH-35S-*At-CycD2* (P) were included as negative and positive controls, respectively. GeneRuler 100 bp Plus DNA marker (Thermo Scientific, Waltham, USA; M).



Figure S2. Secondary stem leaf initiation of the *At-CycD2* line. The soil-grown plants were photographed at 21 days after planting. Arrows show secondary stem leaves.

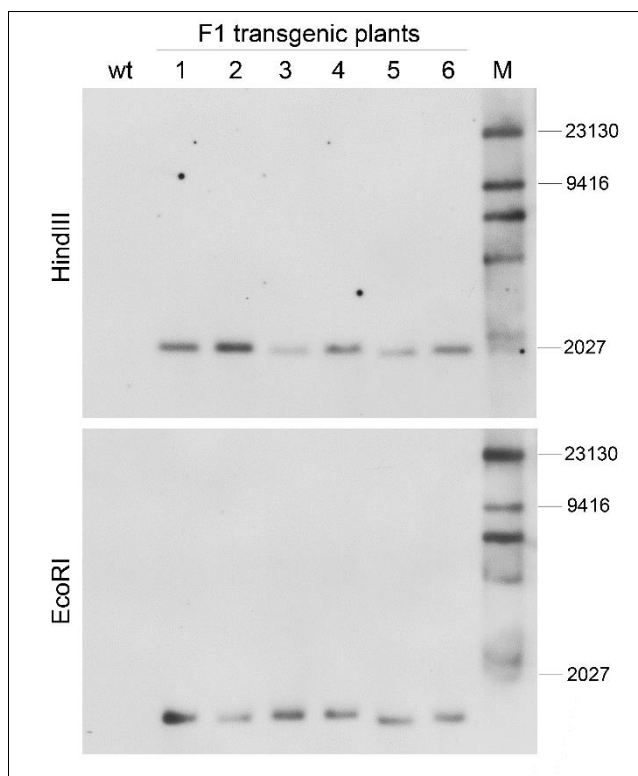


Figure S3. Southern blot analysis of the *At-CycD2-15* transgenic line. Genomic DNA from non-transgenic and T₁ progeny plants of the *At-CycD2-15* transgenic line was cleaved with *Hind*III (*Eco*RI) and hybridized with the DIG-labelled *bar* probe. Lanes are as follows: wild type *N. benthamiana* (wt), T₁ transgenic plants (1-6), DIG-labelled molecular marker (M).

TABLES

Table S1. Primers used in this study. Primers used for cloning (C), transgene verification (TV); expression analysis (EA) and development of probe for Southern blot analysis (SB) are presented. Restriction sites used for cloning are underlined.

Primer	Sequence (5'-3')	Application
Bar-forw	ATGCCGGCGGTCTGCACCATCGTC	SB
Bar-rev	CGCGTGATCTCAGATCTCGGTGAC	SB
PacI-TM43-E10-forw	GTCTTTAATTAAATGGCCGAAGTGCAGCTGGT	C
TM43-E10-EcoRV-rev	CGGCGATATCTTAATGATGATGGTGATGAT	C
At-CycD2-forw	ACCCCATGGCTGAGAATCTTGCTTGT	TV
At-CycD2-rev	CGGTCTAGATCATTGTTTTCTCCTCC	TV, EA
Bar-forw	ATGCCGGCGGTCTGCACCATCGTC	TV
Bar-rev	CGCGTGATCTCAGATCTCGGTGAC	TV
GAPDH-238-forw	GGAGGAGGGAACAACAAGAGG	EA
GAPDH-238-rev	AGATGCCGTCAGTGCCGA	EA
At-CycD2-349-forw	AGGCCTTCTGAGATAGCTGCAGCTGC	EA

Table S2. Segregation test of T₁ progeny of transgenic *N. benthamiana* lines carrying the *At-CycD2* gene. T₁ seeds were germinated on selective MS medium supplemented with 5 mg/L PPT. Number of PPT resistant (PPT^R) and PPT sensitive (PPT^S) seedlings was calculated at two weeks after sowing.

Line	Number of plants			Ratio
	Total	PPT ^R	PPT ^S	PPT ^R /PPT ^S
At-CycD2-1	222	165	57	2.9:1
At-CycD2-3	100	77	23	3.3:1
At-CycD2-4	104	88	16	5.5:1
At-CycD2-5	202	177	25	7:1
At-CycD2-6	510	395	115	3.4:1
At-CycD2-10	167	142	25	5.7:1
At-CycD2-11	264	194	70	2.8:1
At-CycD2-12	197	163	34	4.8:1
At-CycD2-13	69	66	3	22:1
At-CycD2-14	409	385	24	16:1
At-CycD2-15	623	474	149	3:1
At-CycD2-16	211	190	21	9:1
At-CycD2-17	247	223	9	24:1
At-CycD2-18	156	127	29	4.4:1
At-CycD2-19	174	163	21	7.8:1
At-CycD2-21	230	176	54	3.3:1
At-CycD2-24	199	184	15	12:1
At-CycD2-25	430	393	37	11:1

Table S3. Primary data for phenotypic evaluation of transgenic *N. benthamiana* lines expressing the *At-CycD2* gene. Non-transgenic and T₁ progeny of At-CycD2-6, At-CycD2-11, At-CycD2-12, At-CycD2-14, At-CycD2-15, At-CycD2-16, At-CycD2-17, At-CycD2-18, At-CycD2-21, At-CycD2-24 and At-CycD2-25 transgenic plants were grown in greenhouse for 4 weeks and assayed for the plant height, number of leaves and above ground biomass characteristics. The primary data for three repeats are presented (n=45). Each replication included 15 plants per transgenic line or wild type non-transformed control.

At-CycD2-6 vs. wt

genotype	nr.	repeat	plant height, cm	number of leaves	leaf biomass, g	stem biomass, g
At-CycD2-6	1	1	10.8	22	11.8	5.43
At-CycD2-6	2	1	11	15	11.5	5.33
At-CycD2-6	3	1	11.3	15	11.4	5.01
At-CycD2-6	4	1	13.3	20	12.3	6
At-CycD2-6	5	1	12.8	18	11.8	5.5
At-CycD2-6	6	1	11.2	17	11.1	4.83
At-CycD2-6	7	1	15.5	26	16.9	8.97
At-CycD2-6	8	1	14.3	22	13.5	6.73
At-CycD2-6	9	1	13	24	15.4	7.34
At-CycD2-6	10	1	15.3	26	20.2	9.83
At-CycD2-6	11	1	12.2	25	15.6	7.05
At-CycD2-6	12	1	14.3	22	13.7	6.79
At-CycD2-6	13	1	11.8	24	14	6.2
At-CycD2-6	14	1	11.7	23	13.9	6.46
At-CycD2-6	15	1	11.8	20	12.9	5.81
At-CycD2-6	16	2	14.5	24	17.2	7.42
At-CycD2-6	17	2	16	23	17.9	8.45
At-CycD2-6	18	2	12.6	29	22.1	9.79
At-CycD2-6	19	2	14.7	27	20.4	9.53
At-CycD2-6	20	2	13.8	17	19.1	4.6
At-CycD2-6	21	2	16.5	15	11.5	6.12
At-CycD2-6	22	2	11	21	13.8	5.42
At-CycD2-6	23	2	12.6	21	14.1	6.2
At-CycD2-6	24	2	15.2	17	11.7	6
At-CycD2-6	25	2	14.5	22	16.2	7.41
At-CycD2-6	26	2	16.5	20	16.6	8.52
At-CycD2-6	27	2	15.2	30	22.3	10.2
At-CycD2-6	28	2	14	27	19.2	8.11
At-CycD2-6	29	2	15.2	23	17.4	7.69
At-CycD2-6	30	2	14.8	32	23.2	10.8
At-CycD2-6	31	3	10	23	13.9	5.49
At-CycD2-6	32	3	11.7	20	12	5.63
At-CycD2-6	33	3	12.4	23	11.8	5.59
At-CycD2-6	34	3	9.7	27	14.3	5.74
At-CycD2-6	35	3	11.2	22	13.6	5.8
At-CycD2-6	36	3	11	22	13.6	5.92
At-CycD2-6	37	3	10.2	22	12.1	5.38
At-CycD2-6	38	3	11.8	22	11.6	5.23
At-CycD2-6	39	3	10.9	28	16.1	6.74
At-CycD2-6	40	3	9.3	19	15	5.18
At-CycD2-6	41	3	11	22	14.7	4.88
At-CycD2-6	42	3	10.8	20	15	4.98
At-CycD2-6	43	3	10.9	20	14.7	5.3
At-CycD2-6	44	3	9.3	19	19.4	5.79
At-CycD2-6	45	3	10.5	20	11.9	5.92

genotype	nr.	repeat	plant height, cm	number of leaves	leaf biomass, g	stem biomass, g
wt	1	1	12.7	18	10.1	5.93
wt	2	1	12.2	22	10.6	5.63
wt	3	1	13.0	25	11.5	6.63
wt	4	1	12.0	21	9.3	5.26
wt	5	1	12.5	20	10.8	5.3
wt	6	1	12.2	22	10.9	5.61
wt	7	1	13.8	21	10.5	5.75
wt	8	1	13.2	24	11.6	6.2
wt	9	1	13.5	20	10.5	5.2
wt	10	1	13.2	21	10.8	5.88
wt	11	1	12.3	23	9.84	5.6
wt	12	1	11	19	8.44	4.19
wt	13	1	13	26	11.3	5.95
wt	14	1	13.6	23	10.4	5.65
wt	15	1	7.8	11	3.89	1.74
wt	16	2	16.2	24	13	6.58
wt	17	2	11.8	23	10.7	6.32
wt	18	2	16.0	22	11.3	5.74
wt	19	2	12.5	19	9.35	4.29
wt	20	2	17.0	22	10.6	5.76
wt	21	2	16.6	24	11.1	4.66
wt	22	2	18	25	15.8	5.18
wt	23	2	16.2	19	10.5	5.07
wt	24	2	13	18	11.6	4.86
wt	25	2	17.5	22	13.7	6.72
wt	26	2	18.3	27	12	4.66
wt	27	2	18.2	19	10.9	6.41
wt	28	2	15	25	14.2	6.62
wt	29	2	15.5	19	11.1	5.23
wt	30	2	14.3	23	12.8	5.5
wt	31	3	14.5	20	12.3	4.18
wt	32	3	11.3	20	12.6	5.81
wt	33	3	12.0	26	12.4	5.95
wt	34	3	12.7	19	14.8	5.67
wt	35	3	12.2	19	14.4	4.41
wt	36	3	12.0	24	11	4.78
wt	37	3	13.2	18	7.73	4.19
wt	38	3	13.2	25	12.3	5.81
wt	39	3	12.6	19	10.2	3.45
wt	40	3	11.7	25	13.8	4.03
wt	41	3	11.2	26	11.5	4.83
wt	42	3	12.2	20	12.7	5.61
wt	43	3	11.2	26	10.5	4.62
wt	44	3	11.6	25	10.6	4.79
wt	45	3	11.8	19	11.1	4.72

At-CycD2-11 vs. wt

genotype	nr.	repeat	plant height, cm	number of leaves	leaf biomass, g	stem biomass, g
At-CycD2-11	1	1	12.2	20	9.59	4.8
At-CycD2-11	2	1	11.3	17	8.43	4.1
At-CycD2-11	3	1	10.3	21	9.8	4.87
At-CycD2-11	4	1	12	15	10.3	5.14
At-CycD2-11	5	1	13.3	20	9.94	5.62
At-CycD2-11	6	1	14	18	12.3	6.33
At-CycD2-11	7	1	14.2	18	10.9	6
At-CycD2-11	8	1	12	17	10.2	5.25
At-CycD2-11	9	1	13.2	22	12.1	6.39
At-CycD2-11	10	1	13	19	9.04	4.97
At-CycD2-11	11	1	12.5	21	10.3	5.45
At-CycD2-11	12	1	13.8	15	10.9	5.84
At-CycD2-11	13	1	13.3	18	11.2	6.13
At-CycD2-11	14	1	13.2	20	10.8	5.45
At-CycD2-11	15	1	11.2	19	8.41	4.02
At-CycD2-11	16	2	18.5	29	18.6	10.5
At-CycD2-11	17	2	20	32	19.2	11.3
At-CycD2-11	18	2	19.4	27	17.9	10.4
At-CycD2-11	19	2	21	28	18.6	11.7
At-CycD2-11	20	2	16.2	18	8.7	5.13
At-CycD2-11	21	2	21	24	15.7	9.55
At-CycD2-11	22	2	17.2	28	16.9	9.7
At-CycD2-11	23	2	22	32	18.9	12.3
At-CycD2-11	24	2	21.5	35	21.8	13.5
At-CycD2-11	25	2	24.2	31	18.9	12.3
At-CycD2-11	26	2	21.7	28	16.4	10.2
At-CycD2-11	27	2	22	25	17.3	10.1
At-CycD2-11	28	2	21.7	30	20.1	12.6
At-CycD2-11	29	2	20.8	27	16.9	10.6
At-CycD2-11	30	2	17	27	17	10.2
At-CycD2-11	31	3	26.1	33	18.93	10.92
At-CycD2-11	32	3	28.2	36	21.12	13.05
At-CycD2-11	33	3	24.1	33	20.60	11.07
At-CycD2-11	34	3	27.3	38	25.03	14.66
At-CycD2-11	35	3	25.8	28	14.92	9.39
At-CycD2-11	36	3	28.2	32	19.18	11.29
At-CycD2-11	37	3	27.1	40	20.66	11.40
At-CycD2-11	38	3	30.0	42	26.97	15.90
At-CycD2-11	39	3	26.9	28	19.23	11.18
At-CycD2-11	40	3	29.8	36	22.26	13.45
At-CycD2-11	41	3	25.1	29	19.22	10.92
At-CycD2-11	42	3	22.4	21	14.12	8.29
At-CycD2-11	43	3	28.1	35	22.76	13.17
At-CycD2-11	44	3	24.2	23	14.90	9.11
At-CycD2-11	45	3	26.5	25	16.80	10.32

genotype	nr.	repeat	plant height, cm	number of leaves	leaf biomass, g	stem biomass, g
wt	1	1	12.7	18	10.1	5.93
wt	2	1	12.2	22	10.6	5.63
wt	3	1	13.0	25	11.5	6.63
wt	4	1	12.0	21	9.3	5.26
wt	5	1	12.5	20	10.8	5.3
wt	6	1	12.2	22	10.9	5.61
wt	7	1	13.8	21	10.5	5.75
wt	8	1	13.2	24	11.6	6.2
wt	9	1	13.5	20	10.5	5.2
wt	10	1	13.2	21	10.8	5.88
wt	11	1	12.3	23	9.84	5.6
wt	12	1	11	19	8.44	4.19
wt	13	1	13	26	11.3	5.95
wt	14	1	13.6	23	10.4	5.65
wt	15	1	7.8	11	3.89	1.74
wt	16	2	16.3	30	13.4	7.98
wt	17	2	20.6	30	17.9	11.1
wt	18	2	25.5	41	23.5	15.2
wt	19	2	22.7	39	23.3	13.5
wt	20	2	20.7	35	18.3	10.1
wt	21	2	22.0	36	21.6	13.4
wt	22	2	22.3	31	15.8	10.1
wt	23	2	21	33	19	10.4
wt	24	2	17.2	28	12.7	6.7
wt	25	2	17.3	30	16.8	9.12
wt	26	2	21	28	15.3	8.52
wt	27	2	19.6	34	18.8	11
wt	28	2	17.1	28	13.6	7.44
wt	29	2	17.6	32	14.9	7.69
wt	30	2	19.8	37	17.2	9.84
wt	31	3	22.0	37	15.36	8.31
wt	32	3	27.3	39	18.42	8.66
wt	33	3	23.2	41	20.87	10.93
wt	34	3	25.4	36	18.74	10.24
wt	35	3	26.4	32	15.93	9.53
wt	36	3	27.7	32	16.13	9.66
wt	37	3	25.2	34	14.89	8.56
wt	38	3	23.6	30	13.93	7.58
wt	39	3	26.2	40	17.90	10.46
wt	40	3	24.3	32	15.65	8.50
wt	41	3	26.5	35	15.38	8.79
wt	42	3	27	36	16.28	9.27
wt	43	3	28.1	40	20.93	10.64
wt	44	3	20.1	36	14.84	7.66
wt	45	3	26.4	37	13.51	9.00

At-CycD2-12 vs. wt

genotype	nr.	repeat	plant height, cm	number of leaves	leaf biomass, g	stem biomass, g
At-CycD2-12	1	1	9.7	17	8.16	3.74
At-CycD2-12	2	1	10.7	15	8.26	4.02
At-CycD2-12	3	1	7.1	8	4.34	1.84
At-CycD2-12	4	1	10.6	12	9.12	3.93
At-CycD2-12	5	1	11.4	16	8.11	3.76
At-CycD2-12	6	1	7	11	5.31	2.23
At-CycD2-12	7	1	10.8	13	4.46	2.32
At-CycD2-12	8	1	12.9	15	9.67	4.43
At-CycD2-12	9	1	10.3	15	8.09	3.8
At-CycD2-12	10	1	8.7	12	8.15	3.12
At-CycD2-12	11	1	12.2	12	4.73	2.42
At-CycD2-12	12	1	9.8	15	6.55	2.76
At-CycD2-12	13	1	10.7	11	8.92	3.79
At-CycD2-12	14	1	9	16	5.36	2.37
At-CycD2-12	15	1	6.7	13	4.15	1.78
At-CycD2-12	16	2	24.4	47	32.9	21.4
At-CycD2-12	17	2	25.6	46	28.5	19.1
At-CycD2-12	18	2	27.2	43	29	19.2
At-CycD2-12	19	2	27.1	40	25.7	16.9
At-CycD2-12	20	2	26.3	36	26.8	16.6
At-CycD2-12	21	2	29.5	38	26.8	18.8
At-CycD2-12	22	2	28.1	43	28	21.6
At-CycD2-12	23	2	24.4	43	19.4	11.5
At-CycD2-12	24	2	28.9	40	27.4	19.4
At-CycD2-12	25	2	27.8	37	21.8	13.5
At-CycD2-12	26	2	30	38	23.8	14.3
At-CycD2-12	27	2	30.1	49	23.2	17.8
At-CycD2-12	28	2	24.4	41	25.2	15.4
At-CycD2-12	29	2	31.1	44	30.7	21.7
At-CycD2-12	30	2	27.6	31	26.2	17
At-CycD2-12	31	3	30.0	44	28.2	16.13
At-CycD2-12	32	3	23.3	40	20.2	12.52
At-CycD2-12	33	3	26.2	42	25	14.14
At-CycD2-12	34	3	19.2	30	16.5	7.99
At-CycD2-12	35	3	29.2	40	23	12.80
At-CycD2-12	36	3	25.9	33	20.3	11.07
At-CycD2-12	37	3	30.9	35	25.7	14.42
At-CycD2-12	38	3	30.8	33	21.8	13.34
At-CycD2-12	39	3	30.2	35	21.6	13.14
At-CycD2-12	40	3	22.9	29	18.4	10.46
At-CycD2-12	41	3	30.4	42	26.9	15.98
At-CycD2-12	42	3	27.9	26	18	11.51
At-CycD2-12	43	3	21.4	31	16.9	9.07
At-CycD2-12	44	3	27.4	37	24.3	13.33
At-CycD2-12	45	3	26.3	32	17	10.18

genotype	nr.	repeat	plant height, cm	number of leaves	leaf biomass, g	stem biomass, g
wt	1	1	11.5	25	8.6	4.12
wt	2	1	10.4	21	8.2	3.75
wt	3	1	12.4	27	10.9	5.29
wt	4	1	9.3	17	4.84	2.06
wt	5	1	9.8	14	4.8	2.14
wt	6	1	11.7	21	7.99	3.82
wt	7	1	10.6	22	7.39	3.22
wt	8	1	8.2	11	3.39	1.79
wt	9	1	10	18	6.18	2.81
wt	10	1	10.7	20	8.71	4.1
wt	11	1	11.4	24	9.06	4.42
wt	12	1	11.8	26	11.7	5.53
wt	13	1	12.5	26	11.5	5.36
wt	14	1	12.7	29	12.4	6.09
wt	15	1	11.7	23	11.2	5.41
wt	16	2	24.4	40	26.7	16.2
wt	17	2	26.4	43	20.7	13.6
wt	18	2	26.6	53	22.9	15.8
wt	19	2	27.6	31	15.7	10.3
wt	20	2	27.4	49	22.4	15.3
wt	21	2	28.7	54	29.5	21.3
wt	22	2	28.4	38	22.8	14.7
wt	23	2	27.5	40	22.4	15.4
wt	24	2	29	38	24.5	17.6
wt	25	2	28.4	42	23.9	17
wt	26	2	28.4	44	23	15.9
wt	27	2	26.2	40	26.1	16
wt	28	2	26.3	44	22	12.6
wt	29	2	27.6	38	21.2	14.4
wt	30	2	22.2	37	18.2	12
wt	31	3	22.0	37	15.36	8.31
wt	32	3	27.3	39	18.42	8.66
wt	33	3	23.2	41	20.87	10.93
wt	34	3	25.4	36	18.74	10.24
wt	35	3	26.4	32	15.93	9.53
wt	36	3	27.7	32	16.13	9.66
wt	37	3	25.2	34	14.89	8.56
wt	38	3	23.6	30	13.93	7.58
wt	39	3	26.2	40	17.90	10.46
wt	40	3	24.3	32	15.65	8.50
wt	41	3	26.5	35	15.38	8.79
wt	42	3	27	36	16.28	9.27
wt	43	3	28.1	40	20.93	10.64
wt	44	3	20.1	36	14.84	7.66
wt	45	3	26.4	37	13.51	9.00

At-CycD2-14 vs. wt

genotype	nr.	repeat	plant height, cm	number of leaves	leaf biomass, g	stem biomass, g
At-CycD2-14	1	1	10.8	20	15	6.64
At-CycD2-14	2	1	12.5	21	18	8.96
At-CycD2-14	3	1	10.5	20	14	6.48
At-CycD2-14	4	1	10.5	19	13.9	6.13
At-CycD2-14	5	1	9.7	18	13.9	5.52
At-CycD2-14	6	1	12	23	17.6	6.96
At-CycD2-14	7	1	11.7	26	17.7	8.32
At-CycD2-14	8	1	10	20	16.1	6.56
At-CycD2-14	9	1	11.2	20	15.4	6.12
At-CycD2-14	10	1	10.2	22	17.5	7.2
At-CycD2-14	11	1	10.5	21	15.7	7.18
At-CycD2-14	12	1	10.5	27	19.8	8.5
At-CycD2-14	13	1	11.4	31	19.4	8.28
At-CycD2-14	14	1	10.4	23	17.3	6.75
At-CycD2-14	15	1	10.8	24	19.4	7.4
At-CycD2-14	16	2	8.7	22	16.3	5.14
At-CycD2-14	17	2	9.8	23	17.2	5.8
At-CycD2-14	18	2	8.5	22	14.9	4.84
At-CycD2-14	19	2	8	19	16.8	4.69
At-CycD2-14	20	2	7.8	17	8.2	3.09
At-CycD2-14	21	2	9.6	18	11.8	3.75
At-CycD2-14	22	2	7.5	22	13.3	4.53
At-CycD2-14	23	2	8.3	21	13.9	4.95
At-CycD2-14	24	2	9.5	20	15.1	4.99
At-CycD2-14	25	2	8.8	22	16.2	5.23
At-CycD2-14	26	2	7	19	15.3	4.15
At-CycD2-14	27	2	9.2	23	17.2	5.22
At-CycD2-14	28	2	8.5	27	16.3	5.25
At-CycD2-14	29	2	8.5	21	13.1	4.55
At-CycD2-14	30	2	9.4	25	19.1	6.29
At-CycD2-14	31	3	13.3	28	14.9	6.72
At-CycD2-14	32	3	10.9	16	19.1	6.71
At-CycD2-14	33	3	12	17	9.33	4.45
At-CycD2-14	34	3	17.5	25	17	9.46
At-CycD2-14	35	3	15.3	16	11.5	5.28
At-CycD2-14	36	3	19	19	11.5	7.3
At-CycD2-14	37	3	16.4	26	14.8	7.67
At-CycD2-14	38	3	16	24	14.8	7.41
At-CycD2-14	39	3	10.5	25	17.4	7.33
At-CycD2-14	40	3	15.5	22	12.9	6.45
At-CycD2-14	41	3	14	18	10.3	4.75
At-CycD2-14	42	3	13.8	17	19.2	4.63
At-CycD2-14	43	3	14.8	14	9.65	5.65
At-CycD2-14	44	3	14.3	13	17.3	4.73
At-CycD2-14	45	3	12.6	16	18	3.9

genotype	nr.	repeat	plant height, cm	number of leaves	leaf biomass, g	stem biomass, g
wt	1	1	10.8	19	12.4	5.7
wt	2	1	11.6	18	12.9	5.46
wt	3	1	10.0	21	12.1	5.15
wt	4	1	10.6	19	10.8	5.02
wt	5	1	8.3	20	12.1	4.52
wt	6	1	10.5	18	9.78	4.2
wt	7	1	9	17	8.37	3.57
wt	8	1	9.8	19	10.2	4.16
wt	9	1	10.9	20	11.3	4.84
wt	10	1	11.5	24	12.9	6
wt	11	1	11	17	9.73	4.44
wt	12	1	9.2	17	7.25	2.92
wt	13	1	11	15	8.31	3.86
wt	14	1	12.2	25	10.2	4.8
wt	15	1	11.3	18	10.3	4.56
wt	16	2	10.5	19	8.11	3.13
wt	17	2	14.8	23	14.6	6.94
wt	18	2	13.2	26	17.2	7.89
wt	19	2	11.8	17	9.37	4.25
wt	20	2	11.5	18	14.1	5.65
wt	21	2	13.2	18	11.8	5.13
wt	22	2	10.5	14	9.38	3.8
wt	23	2	13.5	23	14.6	6.77
wt	24	2	14.5	24	11.5	5.69
wt	25	2	13.7	26	16.1	6.84
wt	26	2	11.4	17	10.3	3.97
wt	27	2	12.1	20	13.4	5.33
wt	28	2	10.8	16	9.36	3.84
wt	29	2	11.7	20	10.5	4.6
wt	30	2	10	14	7.56	3.14
wt	31	3	16.2	24	13	6.58
wt	32	3	11.8	23	10.7	6.32
wt	33	3	16.0	22	11.3	5.74
wt	34	3	12.5	19	9.35	4.29
wt	35	3	17.0	22	10.6	5.76
wt	36	3	16.6	24	11.1	4.66
wt	37	3	18	25	15.8	5.18
wt	38	3	16.2	19	10.5	5.07
wt	39	3	13	18	11.6	4.86
wt	40	3	17.5	22	13.7	6.72
wt	41	3	18.3	27	12	4.66
wt	42	3	18.2	19	10.9	6.41
wt	43	3	15	25	14.2	6.62
wt	44	3	15.5	19	11.1	5.23
wt	45	3	14.3	23	12.8	5.5

At-CycD2-15 vs. wt

genotype	nr.	repeat	plant height, cm	number of leaves	leaf biomass, g	stem biomass, g
At-CycD2-15	1	1	13.8	28	15.4	8.59
At-CycD2-15	2	1	12.6	26	15.6	8.1
At-CycD2-15	3	1	11.8	22	11.1	5.89
At-CycD2-15	4	1	13.7	29	13.2	7.25
At-CycD2-15	5	1	11.2	25	10.7	5.62
At-CycD2-15	6	1	12	25	11.5	6.37
At-CycD2-15	7	1	13.7	25	12.4	7.2
At-CycD2-15	8	1	12	23	13.2	7.07
At-CycD2-15	9	1	12.2	29	12.1	6.97
At-CycD2-15	10	1	13.6	23	12.5	7.11
At-CycD2-15	11	1	13.5	29	14.1	8.33
At-CycD2-15	12	1	14.5	28	16.7	9.76
At-CycD2-15	13	1	14.5	30	15	8.73
At-CycD2-15	14	1	13.3	24	15	7.99
At-CycD2-15	15	1	13	24	13.5	7.18
At-CycD2-15	16	2	11.3	31	21.2	8.37
At-CycD2-15	17	2	9.5	22	19.4	6.84
At-CycD2-15	18	2	7.8	22	16	5.39
At-CycD2-15	19	2	10.3	27	20.7	7.68
At-CycD2-15	20	2	9.2	31	17	7.07
At-CycD2-15	21	2	9	29	16.6	6.65
At-CycD2-15	22	2	10.5	29	21	8.34
At-CycD2-15	23	2	11.2	31	23	9.85
At-CycD2-15	24	2	9	25	16.8	6.49
At-CycD2-15	25	2	9.2	23	16.9	5.83
At-CycD2-15	26	2	10.2	31	22.2	8.63
At-CycD2-15	27	2	9.4	28	17	6.78
At-CycD2-15	28	2	10.4	28	21.7	8.41
At-CycD2-15	29	2	9.4	30	18.6	7.36
At-CycD2-15	30	2	10.6	31	23.2	8.93
At-CycD2-15	31	3	12.3	21	12.9	6.56
At-CycD2-15	32	3	13	24	16.1	7.38
At-CycD2-15	33	3	11.8	20	13.1	6.75
At-CycD2-15	34	3	14.6	18	14.1	6.29
At-CycD2-15	35	3	14	31	22.4	9.76
At-CycD2-15	36	3	13.4	28	20.8	9.17
At-CycD2-15	37	3	13.4	24	10.3	6.51
At-CycD2-15	38	3	13.6	22	17.4	8.61
At-CycD2-15	39	3	11.5	20	12.9	6.98
At-CycD2-15	40	3	12	25	12	6.42
At-CycD2-15	41	3	16.3	20	15.4	8.61
At-CycD2-15	42	3	15.4	22	14.5	6.8
At-CycD2-15	43	3	12	21	16	7.08
At-CycD2-15	44	3	12.5	19	10.2	4.46
At-CycD2-15	45	3	17.5	30	23.7	11.9

genotype	nr.	repeat	plant height, cm	number of leaves	leaf biomass, g	stem biomass, g
wt	1	1	12.7	18	10.1	5.93
wt	2	1	12.2	22	10.6	5.63
wt	3	1	13.0	25	11.5	6.63
wt	4	1	12.0	21	9.3	5.26
wt	5	1	12.5	20	10.8	5.3
wt	6	1	12.2	22	10.9	5.61
wt	7	1	13.8	21	10.5	5.75
wt	8	1	13.2	24	11.6	6.2
wt	9	1	13.5	20	10.5	5.2
wt	10	1	13.2	21	10.8	5.88
wt	11	1	12.3	23	9.84	5.6
wt	12	1	11	19	8.44	4.19
wt	13	1	13	26	11.3	5.95
wt	14	1	13.6	23	10.4	5.65
wt	15	1	7.8	11	3.89	1.74
wt	16	2	10.5	19	8.11	3.13
wt	17	2	14.8	23	14.6	6.94
wt	18	2	13.2	26	17.2	7.89
wt	19	2	11.8	17	9.37	4.25
wt	20	2	11.5	18	14.1	5.65
wt	21	2	13.2	18	11.8	5.13
wt	22	2	10.5	14	9.38	3.8
wt	23	2	13.5	23	14.6	6.77
wt	24	2	14.5	24	11.5	5.69
wt	25	2	13.7	26	16.1	6.84
wt	26	2	11.4	17	10.3	3.97
wt	27	2	12.1	20	13.4	5.33
wt	28	2	10.8	16	9.36	3.84
wt	29	2	11.7	20	10.5	4.6
wt	30	2	10	14	7.56	3.14
wt	31	3	16.2	24	13	6.58
wt	32	3	11.8	23	10.7	6.32
wt	33	3	16.0	22	11.3	5.74
wt	34	3	12.5	19	9.35	4.29
wt	35	3	17.0	22	10.6	5.76
wt	36	3	16.6	24	11.1	4.66
wt	37	3	18	25	15.8	5.18
wt	38	3	16.2	19	10.5	5.07
wt	39	3	13	18	11.6	4.86
wt	40	3	17.5	22	13.7	6.72
wt	41	3	18.3	27	12	4.66
wt	42	3	18.2	19	10.9	6.41
wt	43	3	15	25	14.2	6.62
wt	44	3	15.5	19	11.1	5.23
wt	45	3	14.3	23	12.8	5.5

At-CycD2-16 vs. wt

genotype	nr.	repeat	plant height, cm	number of leaves	leaf biomass, g	stem biomass, g
At-CycD2-16	1	1	9.5	25	7.74	3.37
At-CycD2-16	2	1	13.4	25	9.27	5.02
At-CycD2-16	3	1	14.1	21	13.3	6.28
At-CycD2-16	4	1	14.5	23	16.5	6.88
At-CycD2-16	5	1	15	36	13.3	6.22
At-CycD2-16	6	1	14.2	27	13.3	6.09
At-CycD2-16	7	1	13	22	14.2	5.72
At-CycD2-16	8	1	12.4	16	12.1	5.37
At-CycD2-16	9	1	11.5	20	11.7	4.3
At-CycD2-16	10	1	11.8	16	11.7	5.2
At-CycD2-16	11	1	12.3	25	9.77	4.56
At-CycD2-16	12	1	12.2	26	13.3	5.98
At-CycD2-16	13	1	11	21	9.3	3.97
At-CycD2-16	14	1	13.5	20	6.68	3.66
At-CycD2-16	15	1	11.8	20	8.39	3.43
At-CycD2-16	16	2	28	36	24.1	12.6
At-CycD2-16	17	2	27	19	16.6	10.9
At-CycD2-16	18	2	19.2	19	13.8	7.93
At-CycD2-16	19	2	24.9	18	17.2	9.47
At-CycD2-16	20	2	25.7	23	15.9	8.67
At-CycD2-16	21	2	29.3	56	32.4	19.7
At-CycD2-16	22	2	25.1	18	15.2	9.58
At-CycD2-16	23	2	27.6	17	27.2	14.5
At-CycD2-16	24	2	26.1	21	31.4	15.3
At-CycD2-16	25	2	29.3	37	18.6	12.4
At-CycD2-16	26	2	24.8	27	25.6	13.6
At-CycD2-16	27	2	23	27	15.5	8.76
At-CycD2-16	28	2	24.5	34	36.4	17.1
At-CycD2-16	29	2	24.3	24	10	5.36
At-CycD2-16	30	2	23.7	27	14.4	8.5
At-CycD2-16	31	3	26.1	28	25.95	12.12
At-CycD2-16	32	3	22.2	24	16.65	8.24
At-CycD2-16	33	3	24.5	37	15.59	7.29
At-CycD2-16	34	3	22.7	27	13.48	6.59
At-CycD2-16	35	3	25.6	26	20.19	10.19
At-CycD2-16	36	3	25.0	30	26.48	11.50
At-CycD2-16	37	3	25.2	28	23.85	9.42
At-CycD2-16	38	3	24.2	21	9.00	5.05
At-CycD2-16	39	3	22.4	23	17.58	8.71
At-CycD2-16	40	3	24.2	32	14.39	7.07
At-CycD2-16	41	3	20.2	18	13.00	5.97
At-CycD2-16	42	3	20.6	30	13.37	6.64
At-CycD2-16	43	3	21.0	45	14.87	6.46
At-CycD2-16	44	3	25.4	33	27.65	14.42
At-CycD2-16	45	3	22.9	22	10.72	5.20

genotype	nr.	repeat	plant height, cm	number of leaves	leaf biomass, g	stem biomass, g
wt	1	1	11.5	25	8.6	4.12
wt	2	1	10.4	21	8.2	3.75
wt	3	1	12.4	27	10.9	5.29
wt	4	1	9.3	17	4.84	2.06
wt	5	1	9.8	14	4.8	2.14
wt	6	1	11.7	21	7.99	3.82
wt	7	1	10.6	22	7.39	3.22
wt	8	1	8.2	11	3.39	1.79
wt	9	1	10	18	6.18	2.81
wt	10	1	10.7	20	8.71	4.1
wt	11	1	11.4	24	9.06	4.42
wt	12	1	11.8	26	11.7	5.53
wt	13	1	12.5	26	11.5	5.36
wt	14	1	12.7	29	12.4	6.09
wt	15	1	11.7	23	11.2	5.41
wt	16	2	24.4	40	26.7	16.2
wt	17	2	26.4	43	20.7	13.6
wt	18	2	26.6	53	22.9	15.8
wt	19	2	27.6	31	15.7	10.3
wt	20	2	27.4	49	22.4	15.3
wt	21	2	28.7	54	29.5	21.3
wt	22	2	28.4	38	22.8	14.7
wt	23	2	27.5	40	22.4	15.4
wt	24	2	29	38	24.5	17.6
wt	25	2	28.4	42	23.9	17
wt	26	2	28.4	44	23	15.9
wt	27	2	26.2	40	26.1	16
wt	28	2	26.3	44	22	12.6
wt	29	2	27.6	38	21.2	14.4
wt	30	2	22.2	37	18.2	12
wt	31	3	22.0	37	15.36	8.31
wt	32	3	27.3	39	18.42	8.66
wt	33	3	23.2	41	20.87	10.93
wt	34	3	25.4	36	18.74	10.24
wt	35	3	26.4	32	15.93	9.53
wt	36	3	27.7	32	16.13	9.66
wt	37	3	25.2	34	14.89	8.56
wt	38	3	23.6	30	13.93	7.58
wt	39	3	26.2	40	17.90	10.46
wt	40	3	24.3	32	15.65	8.50
wt	41	3	26.5	35	15.38	8.79
wt	42	3	27	36	16.28	9.27
wt	43	3	28.1	40	20.93	10.64
wt	44	3	20.1	36	14.84	7.66
wt	45	3	26.4	37	13.51	9.00

At-CycD2-17 vs. wt

genotype	nr.	repeat	plant height, cm	number of leaves	leaf biomass, g	stem biomass, g
At-CycD2-17	1	1	10.5	16	6.36	2.94
At-CycD2-17	2	1	12.2	20	10.4	5.1
At-CycD2-17	3	1	11	19	8.2	3.63
At-CycD2-17	4	1	13.6	19	10.2	5.1
At-CycD2-17	5	1	9.6	18	7.05	3.45
At-CycD2-17	6	1	11.8	21	10.8	4.83
At-CycD2-17	7	1	13.2	20	10.2	5.59
At-CycD2-17	8	1	12.7	19	10.1	5.29
At-CycD2-17	9	1	10.5	19	8.43	3.99
At-CycD2-17	10	1	11.5	18	8.25	3.77
At-CycD2-17	11	1	9.5	20	7.93	3.77
At-CycD2-17	12	1	8.5	19	6.75	3.08
At-CycD2-17	13	1	12.8	20	7.85	4.61
At-CycD2-17	14	1	10.8	20	7.53	3.65
At-CycD2-17	15	1	10.8	19	7.17	3.54
At-CycD2-17	16	2	20.2	27	16.7	8.65
At-CycD2-17	17	2	21	32	20.9	12.3
At-CycD2-17	18	2	19.2	27	16.8	9.48
At-CycD2-17	19	2	18.8	27	16.9	9.97
At-CycD2-17	20	2	19	22	12.4	6.97
At-CycD2-17	21	2	20.2	24	15.4	8.95
At-CycD2-17	22	2	20	28	19.3	10.5
At-CycD2-17	23	2	21	23	14.6	8.74
At-CycD2-17	24	2	17.8	20	13.3	7.34
At-CycD2-17	25	2	17	29	16.6	8.75
At-CycD2-17	26	2	17.5	19	9.96	5.39
At-CycD2-17	27	2	20.3	28	17.6	10.5
At-CycD2-17	28	2	20.5	28	16.8	8.01
At-CycD2-17	29	2	16.8	25	13.9	7.52
At-CycD2-17	30	2	18.3	19	9.58	5.08
At-CycD2-17	31	3	21.1	26	15.79	8.80
At-CycD2-17	32	3	24.4	34	20.43	11.68
At-CycD2-17	33	3	23.9	23	12.61	5.80
At-CycD2-17	34	3	26.0	30	18.46	10.60
At-CycD2-17	35	3	22.8	20	13.40	8.10
At-CycD2-17	36	3	23.7	20	12.25	7.83
At-CycD2-17	37	3	28.9	34	20.96	12.49
At-CycD2-17	38	3	26.2	20	15.65	10.17
At-CycD2-17	39	3	25.3	24	16.28	9.23
At-CycD2-17	40	3	25.3	24	15.54	7.91
At-CycD2-17	41	3	21.4	13	7.66	4.44
At-CycD2-17	42	3	25.2	19	13.99	9.21
At-CycD2-17	43	3	26.3	28	16.65	10.13
At-CycD2-17	44	3	21.5	15	7.98	4.30
At-CycD2-17	45	3	23.4	28	14.18	7.99

genotype	nr.	repeat	plant height, cm	number of leaves	leaf biomass, g	stem biomass, g
wt	1	1	12.7	18	10.1	5.93
wt	2	1	12.2	22	10.6	5.63
wt	3	1	13.0	25	11.5	6.63
wt	4	1	12.0	21	9.3	5.26
wt	5	1	12.5	20	10.8	5.3
wt	6	1	12.2	22	10.9	5.61
wt	7	1	13.8	21	10.5	5.75
wt	8	1	13.2	24	11.6	6.2
wt	9	1	13.5	20	10.5	5.2
wt	10	1	13.2	21	10.8	5.88
wt	11	1	12.3	23	9.84	5.6
wt	12	1	11	19	8.44	4.19
wt	13	1	13	26	11.3	5.95
wt	14	1	13.6	23	10.4	5.65
wt	15	1	7.8	11	3.89	1.74
wt	16	2	16.3	30	13.4	7.98
wt	17	2	20.6	30	17.9	11.1
wt	18	2	25.5	41	23.5	15.2
wt	19	2	22.7	39	23.3	13.5
wt	20	2	20.7	35	18.3	10.1
wt	21	2	22.0	36	21.6	13.4
wt	22	2	22.3	31	15.8	10.1
wt	23	2	21	33	19	10.4
wt	24	2	17.2	28	12.7	6.7
wt	25	2	17.3	30	16.8	9.12
wt	26	2	21	28	15.3	8.52
wt	27	2	19.6	34	18.8	11
wt	28	2	17.1	28	13.6	7.44
wt	29	2	17.6	32	14.9	7.69
wt	30	2	19.8	37	17.2	9.84
wt	31	3	28.1	42	24.69	14.72
wt	32	3	28.7	40	23.24	13.80
wt	33	3	29.1	44	26.51	15.16
wt	34	3	28.2	44	24.87	15.24
wt	35	3	32.2	44	26.96	16.69
wt	36	3	25.3	38	18.89	11.44
wt	37	3	24.9	35	19.92	10.58
wt	38	3	26.3	33	21.16	12.11
wt	39	3	28.6	40	23.19	13.92
wt	40	3	28.4	29	16.99	9.74
wt	41	3	28.3	36	20.90	12.88
wt	42	3	26.9	37	18.51	10.26
wt	43	3	28.6	44	23.34	13.78
wt	44	3	27.7	44	25.88	13.95
wt	45	3	27.6	35	19.54	10.89

At-CycD2-18 vs. wt

genotype	nr.	repeat	plant height, cm	number of leaves	leaf biomass, g	stem biomass, g
At-CycD2-18	1	1	11.2	15	9.31	4.28
At-CycD2-18	2	1	12.4	12	10.1	4.6
At-CycD2-18	3	1	10.2	11	8.77	3.78
At-CycD2-18	4	1	10.8	17	13.5	5.81
At-CycD2-18	5	1	10.5	13	10.3	4.45
At-CycD2-18	6	1	10.5	29	8.99	4.22
At-CycD2-18	7	1	11	19	10.2	4.56
At-CycD2-18	8	1	8.4	12	9.44	3.28
At-CycD2-18	9	1	12	11	10.9	5.19
At-CycD2-18	10	1	9.5	19	10.9	4.02
At-CycD2-18	11	1	10	10	8.22	3.96
At-CycD2-18	12	1	10.6	10	7.7	3.82
At-CycD2-18	13	1	10.8	9	9.57	4.19
At-CycD2-18	14	1	8.5	13	8.06	3.23
At-CycD2-18	15	1	7	10	5.44	2.28
At-CycD2-18	16	2	15.4	17	17.3	9.37
At-CycD2-18	17	2	9.1	11	9.12	3.7
At-CycD2-18	18	2	15	16	14.5	7.11
At-CycD2-18	19	2	19.2	19	13.6	7.17
At-CycD2-18	20	2	19	19	16.5	7.78
At-CycD2-18	21	2	14	18	11.6	5.63
At-CycD2-18	22	2	13.8	10	8.92	4.23
At-CycD2-18	23	2	11.8	13	7.81	3.19
At-CycD2-18	24	2	16.5	14	10.4	5.38
At-CycD2-18	25	2	12	23	21.6	11.4
At-CycD2-18	26	2	15.2	19	13.4	6.83
At-CycD2-18	27	2	11.3	18	9.35	3.38
At-CycD2-18	28	2	15	22	15.9	7.33
At-CycD2-18	29	2	13.5	24	15.2	7.03
At-CycD2-18	30	2	14.6	16	14.4	6.82
At-CycD2-18	31	3	15.5	13	9.01	4.27
At-CycD2-18	32	3	16.7	13	7.95	3.43
At-CycD2-18	33	3	9	9	5.23	1.93
At-CycD2-18	34	3	16.6	21	14.8	7.07
At-CycD2-18	35	3	17.4	22	16.2	8.06
At-CycD2-18	36	3	20.6	23	17.7	10.4
At-CycD2-18	37	3	14.5	19	10.6	4.92
At-CycD2-18	38	3	15	15	9.61	4.24
At-CycD2-18	39	3	14.6	11	7.03	2.95
At-CycD2-18	40	3	16	13	10.7	5.55
At-CycD2-18	41	3	16.3	18	8.97	4.51
At-CycD2-18	42	3	13.2	18	9.43	4.78
At-CycD2-18	43	3	13.3	17	10.4	4.26
At-CycD2-18	44	3	15.8	14	10.7	4.73
At-CycD2-18	45	3	13	17	14.1	6.09

genotype	nr.	repeat	plant height, cm	number of leaves	leaf biomass, g	stem biomass, g
wt	1	1	12.7	18	10.1	5.93
wt	2	1	12.2	22	10.6	5.63
wt	3	1	13.0	25	11.5	6.63
wt	4	1	12.0	21	9.3	5.26
wt	5	1	12.5	20	10.8	5.3
wt	6	1	12.2	22	10.9	5.61
wt	7	1	13.8	21	10.5	5.75
wt	8	1	13.2	24	11.6	6.2
wt	9	1	13.5	20	10.5	5.2
wt	10	1	13.2	21	10.8	5.88
wt	11	1	12.3	23	9.84	5.6
wt	12	1	11	19	8.44	4.19
wt	13	1	13	26	11.3	5.95
wt	14	1	13.6	23	10.4	5.65
wt	15	1	7.8	11	3.89	1.74
wt	16	2	16.3	30	13.4	7.98
wt	17	2	20.6	30	17.9	11.1
wt	18	2	25.5	41	23.5	15.2
wt	19	2	22.7	39	23.3	13.5
wt	20	2	20.7	35	18.3	10.1
wt	21	2	22.0	36	21.6	13.4
wt	22	2	22.3	31	15.8	10.1
wt	23	2	21	33	19	10.4
wt	24	2	17.2	28	12.7	6.7
wt	25	2	17.3	30	16.8	9.12
wt	26	2	21	28	15.3	8.52
wt	27	2	19.6	34	18.8	11
wt	28	2	17.1	28	13.6	7.44
wt	29	2	17.6	32	14.9	7.69
wt	30	2	19.8	37	17.2	9.84
wt	31	3	15.5	24	9.54	4.78
wt	32	3	18.5	31	12.9	6.55
wt	33	3	19.5	23	11	5.77
wt	34	3	17.0	26	9.19	4.9
wt	35	3	16.3	26	10.2	5.05
wt	36	3	13.5	20	7.88	3.58
wt	37	3	22	31	15.2	8.22
wt	38	3	17	30	13	6.06
wt	39	3	17.7	24	11.2	5.76
wt	40	3	17	26	10.7	5.33
wt	41	3	17.3	25	9.42	5.12
wt	42	3	17.7	33	16.9	8.24
wt	43	3	16.5	22	10.3	4.92
wt	44	3	18	26	12.4	6.29
wt	45	3	15	27	9.46	4.75

At-CycD2-21 vs. wt

genotype	nr.	repeat	plant height, cm	number of leaves	leaf biomass, g	stem biomass, g
At-CycD2-21	1	1	12.5	21	17.3	7.8
At-CycD2-21	2	1	14	24	16.2	6.8
At-CycD2-21	3	1	14.2	27	18.7	10.7
At-CycD2-21	4	1	14.6	23	19.1	8.38
At-CycD2-21	5	1	11.5	17	14.3	5.84
At-CycD2-21	6	1	13.3	23	14.2	6.43
At-CycD2-21	7	1	12.5	19	17	7.36
At-CycD2-21	8	1	12	23	16.2	6.25
At-CycD2-21	9	1	13.1	22	14.5	6.4
At-CycD2-21	10	1	14.3	25	14.7	5.55
At-CycD2-21	11	1	12.7	24	12	5.73
At-CycD2-21	12	1	13.7	23	15.2	6.98
At-CycD2-21	13	1	11.3	19	14.1	4.85
At-CycD2-21	14	1	13.1	16	15	6.57
At-CycD2-21	15	1	12.1	18	15.3	6.61
At-CycD2-21	16	2	19.6	13	22.3	10.4
At-CycD2-21	17	2	21.3	17	15	7.62
At-CycD2-21	18	2	18.6	12	9.7	4.45
At-CycD2-21	19	2	19.7	14	14.2	7.56
At-CycD2-21	20	2	16.3	18	16.8	8.06
At-CycD2-21	21	2	18.4	12	11.7	6.24
At-CycD2-21	22	2	19.3	27	23	15
At-CycD2-21	23	2	19.7	19	15.6	7.93
At-CycD2-21	24	2	16.1	13	10.5	4.4
At-CycD2-21	25	2	21.8	15	17	9.42
At-CycD2-21	26	2	18.1	16	13.3	6.52
At-CycD2-21	27	2	20.8	28	12.9	7.38
At-CycD2-21	28	2	14.7	22	17.6	8.19
At-CycD2-21	29	2	22.6	25	18.9	10.4
At-CycD2-21	30	2	25	21	22.6	12.1
At-CycD2-21	31	3	15.2	26	14.39	5.48
At-CycD2-21	32	3	17.3	18	14.00	4.74
At-CycD2-21	33	3	13.3	15	10.34	3.53
At-CycD2-21	34	3	20.4	13	13.20	6.61
At-CycD2-21	35	3	17.2	15	11.92	4.88
At-CycD2-21	36	3	14.4	14	5.87	3.12
At-CycD2-21	37	3	17.9	12	15.19	6.36
At-CycD2-21	38	3	19.2	14	12.68	5.77
At-CycD2-21	39	3	21.3	14	18.00	7.83
At-CycD2-21	40	3	18.9	13	12.40	5.90
At-CycD2-21	41	3	22.3	19	15.79	8.51
At-CycD2-21	42	3	22.4	13	16.35	9.16
At-CycD2-21	43	3	16.8	14	9.72	4.44
At-CycD2-21	44	3	18.9	27	14.50	7.37
At-CycD2-21	45	3	13.2	11	6.37	3.20

genotype	nr.	repeat	plant height, cm	number of leaves	leaf biomass, g	stem biomass, g
wt	1	1	11.5	25	8.6	4.12
wt	2	1	10.4	21	8.2	3.75
wt	3	1	12.4	27	10.9	5.29
wt	4	1	9.3	17	4.84	2.06
wt	5	1	9.8	14	4.8	2.14
wt	6	1	11.7	21	7.99	3.82
wt	7	1	10.6	22	7.39	3.22
wt	8	1	8.2	11	3.39	1.79
wt	9	1	10	18	6.18	2.81
wt	10	1	10.7	20	8.71	4.1
wt	11	1	11.4	24	9.06	4.42
wt	12	1	11.8	26	11.7	5.53
wt	13	1	12.5	26	11.5	5.36
wt	14	1	12.7	29	12.4	6.09
wt	15	1	11.7	23	11.2	5.41
wt	16	2	24.4	40	26.7	16.2
wt	17	2	26.4	43	20.7	13.6
wt	18	2	26.6	53	22.9	15.8
wt	19	2	27.6	31	15.7	10.3
wt	20	2	27.4	49	22.4	15.3
wt	21	2	28.7	54	29.5	21.3
wt	22	2	28.4	38	22.8	14.7
wt	23	2	27.5	40	22.4	15.4
wt	24	2	29	38	24.5	17.6
wt	25	2	28.4	42	23.9	17
wt	26	2	28.4	44	23	15.9
wt	27	2	26.2	40	26.1	16
wt	28	2	26.3	44	22	12.6
wt	29	2	27.6	38	21.2	14.4
wt	30	2	22.2	37	18.2	12
wt	31	3	28.1	42	24.69	14.72
wt	32	3	28.7	40	23.24	13.80
wt	33	3	29.1	44	26.51	15.16
wt	34	3	28.2	44	24.87	15.24
wt	35	3	32.2	44	26.96	16.69
wt	36	3	25.3	38	18.89	11.44
wt	37	3	24.9	35	19.92	10.58
wt	38	3	26.3	33	21.16	12.11
wt	39	3	28.6	40	23.19	13.92
wt	40	3	28.4	29	16.99	9.74
wt	41	3	28.3	36	20.90	12.88
wt	42	3	26.9	37	18.51	10.26
wt	43	3	28.6	44	23.34	13.78
wt	44	3	27.7	44	25.88	13.95
wt	45	3	27.6	35	19.54	10.89

At-CycD2-24 vs. wt

genotype	nr.	repeat	plant height, cm	number of leaves	leaf biomass, g	stem biomass, g
At-CycD2-24	1	1	7.2	10	7.53	3.7
At-CycD2-24	2	1	10	18	7.25	3.78
At-CycD2-24	3	1	7.2	19	7.47	2.86
At-CycD2-24	4	1	7	14	8.48	3.49
At-CycD2-24	5	1	8.7	23	10.9	5.81
At-CycD2-24	6	1	11.4	23	13.3	5.99
At-CycD2-24	7	1	11.1	20	13.6	6.2
At-CycD2-24	8	1	6.5	15	10.3	3.39
At-CycD2-24	9	1	8.2	20	8.47	3.78
At-CycD2-24	10	1	10.8	20	9.84	5.2
At-CycD2-24	11	1	9.1	20	7.32	3.36
At-CycD2-24	12	1	11.8	23	15.7	6.57
At-CycD2-24	13	1	11.5	28	13.2	7.72
At-CycD2-24	14	1	10.5	24	10.1	5.48
At-CycD2-24	15	1	8.5	23	8.3	4
At-CycD2-24	16	2	16	29	24.7	12.7
At-CycD2-24	17	2	18	20	21.6	11.3
At-CycD2-24	18	2	20.6	18	19.9	10.3
At-CycD2-24	19	2	17.6	32	15.1	10
At-CycD2-24	20	2	22.9	36	25.3	18.2
At-CycD2-24	21	2	19.3	34	21.3	12.6
At-CycD2-24	22	2	21.2	32	28.8	16.5
At-CycD2-24	23	2	21.4	28	22.4	13.6
At-CycD2-24	24	2	18.2	30	21.2	11
At-CycD2-24	25	2	19.4	28	24.4	13.6
At-CycD2-24	26	2	16.3	27	16.9	9.92
At-CycD2-24	27	2	20.2	27	22.8	10.5
At-CycD2-24	28	2	19	28	26.7	13.4
At-CycD2-24	29	2	20.7	25	26	13.9
At-CycD2-24	30	2	20.5	33	22.3	15
At-CycD2-24	31	3	7.3	23	11.7	5.52
At-CycD2-24	32	3	8.8	21	11.3	5.45
At-CycD2-24	33	3	8	18	10.5	4.32
At-CycD2-24	34	3	9	15	7.56	3.07
At-CycD2-24	35	3	7.7	20	11.9	4.56
At-CycD2-24	36	3	6.5	11	9.6	3.59
At-CycD2-24	37	3	11	31	10.7	5.31
At-CycD2-24	38	3	8.5	12	3.5	1.96
At-CycD2-24	39	3	6.8	17	8.41	3.23
At-CycD2-24	40	3	8.3	18	9.56	3.82
At-CycD2-24	41	3	6.3	9	2.68	1.39
At-CycD2-24	42	3	8	12	8.46	2.93
At-CycD2-24	43	3	4	16	9.75	2.89
At-CycD2-24	44	3	8.2	20	8.87	4.14
At-CycD2-24	45	3	6	16	5.97	3.06

genotype	nr.	repeat	plant height, cm	number of leaves	leaf biomass, g	stem biomass, g
wt	1	1	11.5	25	8.6	4.12
wt	2	1	10.4	21	8.2	3.75
wt	3	1	12.4	27	10.9	5.29
wt	4	1	9.3	17	4.84	2.06
wt	5	1	9.8	14	4.8	2.14
wt	6	1	11.7	21	7.99	3.82
wt	7	1	10.6	22	7.39	3.22
wt	8	1	8.2	11	3.39	1.79
wt	9	1	10	18	6.18	2.81
wt	10	1	10.7	20	8.71	4.1
wt	11	1	11.4	24	9.06	4.42
wt	12	1	11.8	26	11.7	5.53
wt	13	1	12.5	26	11.5	5.36
wt	14	1	12.7	29	12.4	6.09
wt	15	1	11.7	23	11.2	5.41
wt	16	2	24.4	40	26.7	16.2
wt	17	2	26.4	43	20.7	13.6
wt	18	2	26.6	53	22.9	15.8
wt	19	2	27.6	31	15.7	10.3
wt	20	2	27.4	49	22.4	15.3
wt	21	2	28.7	54	29.5	21.3
wt	22	2	28.4	38	22.8	14.7
wt	23	2	27.5	40	22.4	15.4
wt	24	2	29	38	24.5	17.6
wt	25	2	28.4	42	23.9	17
wt	26	2	28.4	44	23	15.9
wt	27	2	26.2	40	26.1	16
wt	28	2	26.3	44	22	12.6
wt	29	2	27.6	38	21.2	14.4
wt	30	2	22.2	37	18.2	12
wt	31	3	16.2	24	13	6.58
wt	32	3	11.8	23	10.7	6.32
wt	33	3	16.0	22	11.3	5.74
wt	34	3	12.5	19	9.35	4.29
wt	35	3	17.0	22	10.6	5.76
wt	36	3	16.6	24	11.1	4.66
wt	37	3	18	25	15.8	5.18
wt	38	3	16.2	19	10.5	5.07
wt	39	3	13	18	11.6	4.86
wt	40	3	17.5	22	13.7	6.72
wt	41	3	18.3	27	12	4.66
wt	42	3	18.2	19	10.9	6.41
wt	43	3	15	25	14.2	6.62
wt	44	3	15.5	19	11.1	5.23
wt	45	3	14.3	23	12.8	5.5

At-CycD2-25 vs. wt

genotype	nr.	repeat	plant height, cm	number of leaves	leaf biomass, g	stem biomass, g
At-CycD2-25	1	1	16.5	24	19	8.84
At-CycD2-25	2	1	15	21	14.4	6.95
At-CycD2-25	3	1	16.3	23	12.6	6.94
At-CycD2-25	4	1	15	23	14.4	6.8
At-CycD2-25	5	1	15.3	21	12.1	6.52
At-CycD2-25	6	1	15.8	23	13.4	6.8
At-CycD2-25	7	1	15.2	27	21	10.3
At-CycD2-25	8	1	14.8	23	16.6	7.65
At-CycD2-25	9	1	16.3	21	14.5	7.45
At-CycD2-25	10	1	15.6	23	15.3	7.61
At-CycD2-25	11	1	16.8	20	15.8	8.12
At-CycD2-25	12	1	16.4	25	16.8	8
At-CycD2-25	13	1	16.4	26	20.2	9.69
At-CycD2-25	14	1	17.5	23	13.2	7.28
At-CycD2-25	15	1	13.7	20	12.9	6.25
At-CycD2-25	16	2	15	20	11.7	6.41
At-CycD2-25	17	2	14.8	25	10.2	6.11
At-CycD2-25	18	2	17.6	30	16.6	9.92
At-CycD2-25	19	2	14.8	24	10.4	6.54
At-CycD2-25	20	2	14	28	11.5	6.85
At-CycD2-25	21	2	16.8	31	15.7	9.14
At-CycD2-25	22	2	16	32	15.5	9.72
At-CycD2-25	23	2	16.7	29	14	8.64
At-CycD2-25	24	2	14.4	26	12.6	6.76
At-CycD2-25	25	2	14.4	25	13	7.14
At-CycD2-25	26	2	14.3	24	10.4	5.97
At-CycD2-25	27	2	13.8	26	11.3	6.33
At-CycD2-25	28	2	15	27	14.7	8.45
At-CycD2-25	29	2	14.2	28	14.1	7.76
At-CycD2-25	30	2	16	28	15.8	9.1
At-CycD2-25	31	3	11	18	10.9	5.06
At-CycD2-25	32	3	11.7	17	11	5.07
At-CycD2-25	33	3	11	19	10.2	4.72
At-CycD2-25	34	3	12.5	17	10.4	5.03
At-CycD2-25	35	3	10.5	24	11.3	4.92
At-CycD2-25	36	3	11.5	23	10.9	5.21
At-CycD2-25	37	3	10.2	18	9.91	4.63
At-CycD2-25	38	3	10.3	14	8.69	4.01
At-CycD2-25	39	3	11.2	21	10.4	4.82
At-CycD2-25	40	3	10.2	22	10.4	4.66
At-CycD2-25	41	3	9.8	18	7.94	3.68
At-CycD2-25	42	3	10	20	9.1	4.08
At-CycD2-25	43	3	10.8	20	9.94	4.73
At-CycD2-25	44	3	9.7	22	12	4.83
At-CycD2-25	45	3	10.2	20	9.26	4.15

genotype	nr.	repeat	plant height, cm	number of leaves	leaf biomass, g	stem biomass, g
wt	1	1	16.2	24	13	6.58
wt	2	1	11.8	23	10.7	6.32
wt	3	1	16.0	22	11.3	5.74
wt	4	1	12.5	19	9.35	4.29
wt	5	1	17.0	22	10.6	5.76
wt	6	1	16.6	24	11.1	4.66
wt	7	1	18	25	15.8	5.18
wt	8	1	16.2	19	10.5	5.07
wt	9	1	13	18	11.6	4.86
wt	10	1	17.5	22	13.7	6.72
wt	11	1	18.3	27	12	4.66
wt	12	1	18.2	19	10.9	6.41
wt	13	1	15	25	14.2	6.62
wt	14	1	15.5	19	11.1	5.23
wt	15	1	14.3	23	12.8	5.5
wt	16	2	11.5	25	8.6	4.12
wt	17	2	10.4	21	8.2	3.75
wt	18	2	12.4	27	10.9	5.29
wt	19	2	9.3	17	4.84	2.06
wt	20	2	9.8	14	4.8	2.14
wt	21	2	11.7	21	7.99	3.82
wt	22	2	10.6	22	7.39	3.22
wt	23	2	8.2	11	3.39	1.79
wt	24	2	10	18	6.18	2.81
wt	25	2	10.7	20	8.71	4.1
wt	26	2	11.4	24	9.06	4.42
wt	27	2	11.8	26	11.7	5.53
wt	28	2	12.5	26	11.5	5.36
wt	29	2	12.7	29	12.4	6.09
wt	30	2	11.7	23	11.2	5.41
wt	31	3	17.3	40	15.7	10.2
wt	32	3	16	34	17.5	9.86
wt	33	3	16.3	30	16.2	9.08
wt	34	3	12.2	26	11.8	5.38
wt	35	3	11.8	20	13.6	4.61
wt	36	3	12.2	19	12.8	5.06
wt	37	3	11.8	19	9.51	4.41
wt	38	3	12	26	10.3	4.87
wt	39	3	10.9	20	12.3	5.17
wt	40	3	13.2	21	13.3	5.72
wt	41	3	12	24	11.3	5.01
wt	42	3	10	22	10.5	4.22
wt	43	3	11.8	24	11.6	5.04
wt	44	3	10	26	11	4.44
wt	45	3	10.5	26	11.3	4.51

Table S4. Phenotypic characterization of transgenic *N. benthamiana* lines expressing the At-CycD2 gene. Non-transgenic and T₁ progeny of At-CycD2-6, At-CycD2-14, At-CycD2-15 and At-CycD2-25 transgenic plants were grown in greenhouse for 4 weeks and assayed for the plant height, number of leaves and above ground biomass characteristics. The phenotypic parameters are expressed as a percent relative to wild type. Data for three replications are shown (n=45). Each replication included 15 plants per transgenic line or wild type non-transformed control. Values represent the means with standard deviation. The unpaired T-test using SigmaStat statistic software was applied to determine differences among the mean values.

	plant height		number of leaves	
	transgenic plant	wt control	transgenic plant	wt control
At-CycD2-6	93.96 ± 11.63	100.00 ± 10.80	101.83 ± 17.68	100.00 ± 14.33
At-CycD2-11	102.81 ± 9.53	100.00 ± 11.06	87.79 ± 13.26	100.00 ± 12.93
At-CycD2-12	99.13 ± 15.11	100.00 ± 9.09	86.06 ± 21.15	100.00 ± 16.31
At-CycD2-14	88.36 ± 17.02	100.00 ± 11.69	104.99 ± 21.15	100.00 ± 15.44
At-CycD2-15	90.47 ± 13.94	100.00 ± 12.18	123.11 ± 22.02	100.00 ± 16.35
At-CycD2-16	100.91 ± 14.65	100.00 ± 9.09	82.90 ± 28.01	100.00 ± 16.31
At-CycD2-17	91.24 ± 9.56	100.00 ± 10.44	76.28 ± 16.94	100.00 ± 13.68
At-CycD2-18	80.70 ± 14.72	100.00 ± 11.76	60.26 ± 18.92	100.00 ± 14.16
At-CycD2-21	84.85 ± 26.07	100.00 ± 8.33	61.26 ± 30.60	100.00 ± 16.90
At-CycD2-24	68.35 ± 19.20	100.00 ± 10.59	79.50 ± 22.01	100.00 ± 16.95
At-CycD2-25	107.98 ± 23.82	100.00 ± 14.19	101.91 ± 22.38	100.00 ± 19.83

	leaf biomass		stem biomass	
	transgenic plant	wt control	transgenic plant	wt control
At-CycD2-6	134.03 ± 27.18	100.00 ± 15.81	124.87 ± 26.55	100.00 ± 16.97
At-CycD2-11	107.32 ± 18.91	100.00 ± 17.14	110.46 ± 21.76	100.00 ± 19.14
At-CycD2-12	109.14 ± 29.01	100.00 ± 21.70	109.44 ± 32.92	100.00 ± 22.62
At-CycD2-14	135.39 ± 28.39	100.00 ± 18.70	119.78 ± 33.67	100.00 ± 20.80
At-CycD2-15	142.59 ± 29.43	100.00 ± 19.41	140.38 ± 25.91	100.00 ± 21.84
At-CycD2-16	110.66 ± 38.13	100.00 ± 21.70	98.02 ± 34.77	100.00 ± 22.62
At-CycD2-17	79.59 ± 18.88	100.00 ± 17.19	75.87 ± 18.97	100.00 ± 20.18
At-CycD2-18	88.73 ± 18.89	100.00 ± 19.45	76.80 ± 28.18	100.00 ± 21.97
At-CycD2-21	103.95 ± 60.69	100.00 ± 21.74	90.12 ± 62.48	100.00 ± 23.50
At-CycD2-24	97.27 ± 30.72	100.00 ± 21.75	89.88 ± 34.02	100.00 ± 23.18
At-CycD2-25	122.15 ± 37.39	100.00 ± 22.64	136.33 ± 51.83	100.00 ± 28.97