

1 **Supplementary material**

2 This supplementary material is hosted by Eurosurveillance as supporting information alongside the article
3 mRNA vaccines effectiveness against COVID-19 hospitalizations and deaths in older adults: a cohort study
4 based on data-linkage of national health registries in Portugal on behalf of the authors who remain
5 responsible for the accuracy and appropriateness of the content. The same standards for ethics, copyright,
6 attributions and permissions as for the article apply. Supplements are not edited by Eurosurveillance and the
7 journal is not responsible for the maintenance of any links or email addresses provided therein.

8

9 Supplementary Table S1 – Study period times (days) and date of last event for COVID-19

10 hospitalization and deaths - cohort 65-79 and 80 yo or older.

	Start	End	Duration (days)
65-79 Cohort			
Hospitalization	30.03.2021	11.08.2021	134
Deaths	30.03.2021	09.08.2021	132
80 + Cohort			
Hospitalization	02.02.2021	11.08.2021	190
Deaths	02.02.2021	07.08.2021	186

11

12

13 Supplementary Table S2– Distribution of time (days) since second dose for cohort 65-79 and ≥80 yo.

	Median	Interquartile Range (IQR)	Minimum-Maximum
65-79 yo Cohort	78	71 to 94	1 - 113
≥80 yo Cohort	125	112 to 145	1 - 168

14

15

16

17

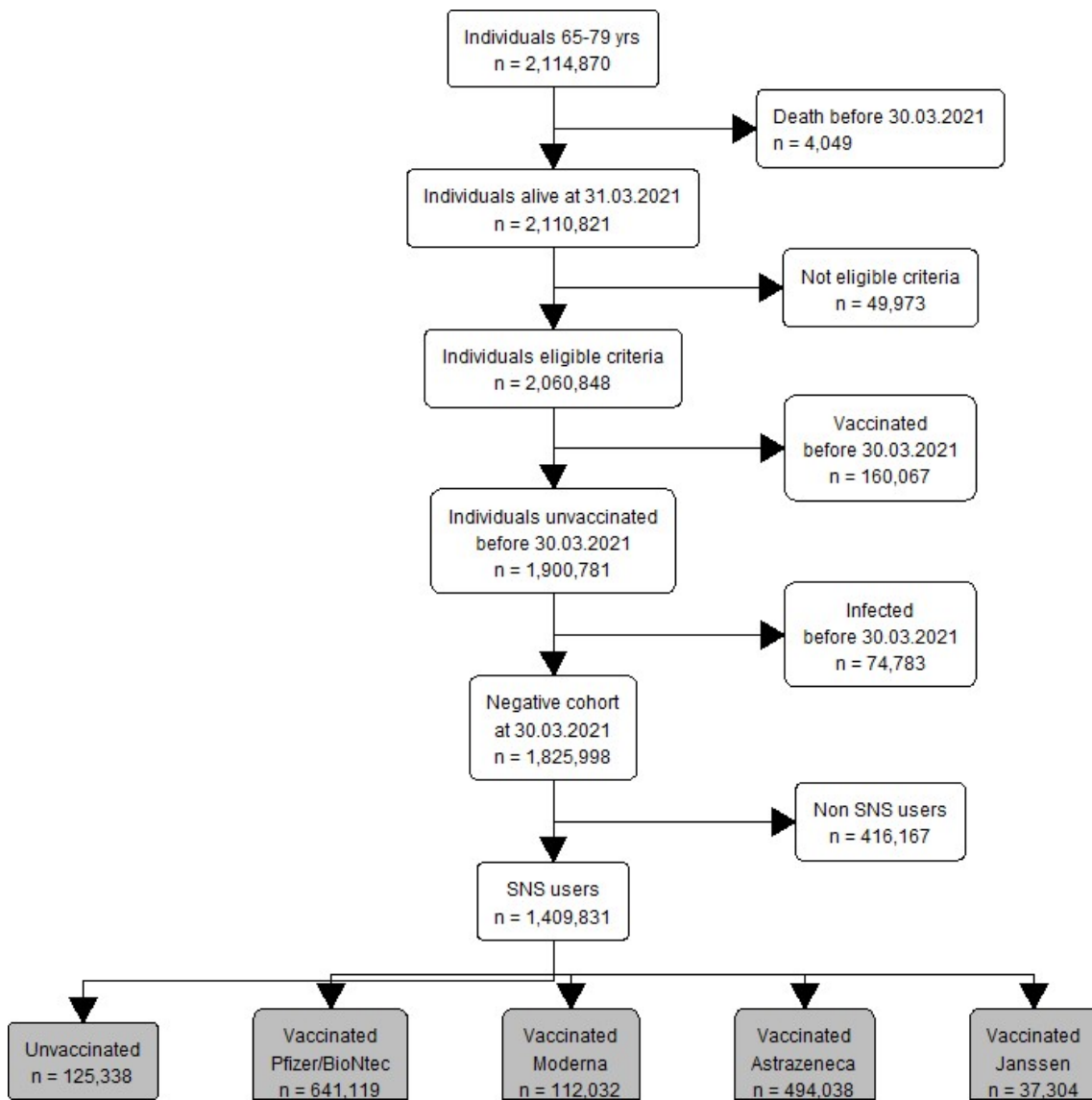
18

19 Supplementary Table S3 – Comparison between the age group, sex and region distribution of
20 the individuals included in the 65-79 age cohort and the Portuguese population estimates
21 (Statistics Portugal, 2020 population estimates).

	Cohort (%)	Population (%)
<hr/>		
65-79 yo cohort		
<hr/>		
Age group		
65-69	341,953 (38.9)	602,210 (38.4)
70-74	298,253 (34.0)	536,388 (34.2)
75-79	238,283 (27.1)	428,706 (27.4)
Sex, male	385,128 (43.8)	694,974 (44.3)
<hr/>		
≥80 yo cohort		
<hr/>		
Age group		
80-84	232,429 (50.4)	337797 (51.0)
85+	228,391 (49.6)	324027 (49.0)
Sex, male	186,014 (40.4)	239,436 (36.2)
<hr/>		

22

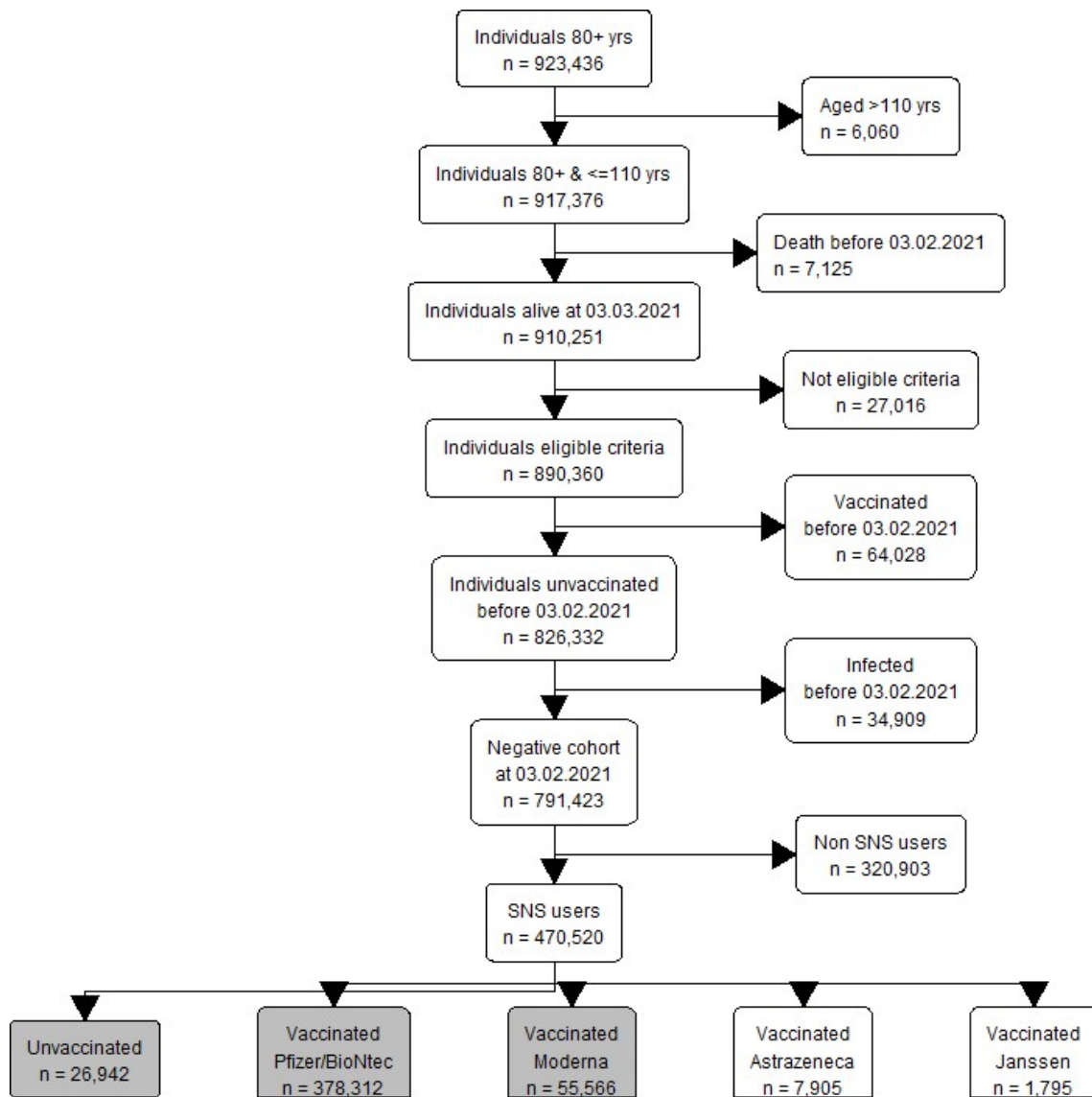
23



25

26 Supplementary Figure S1 – Participants selection flowcharts 65-79 years old cohort

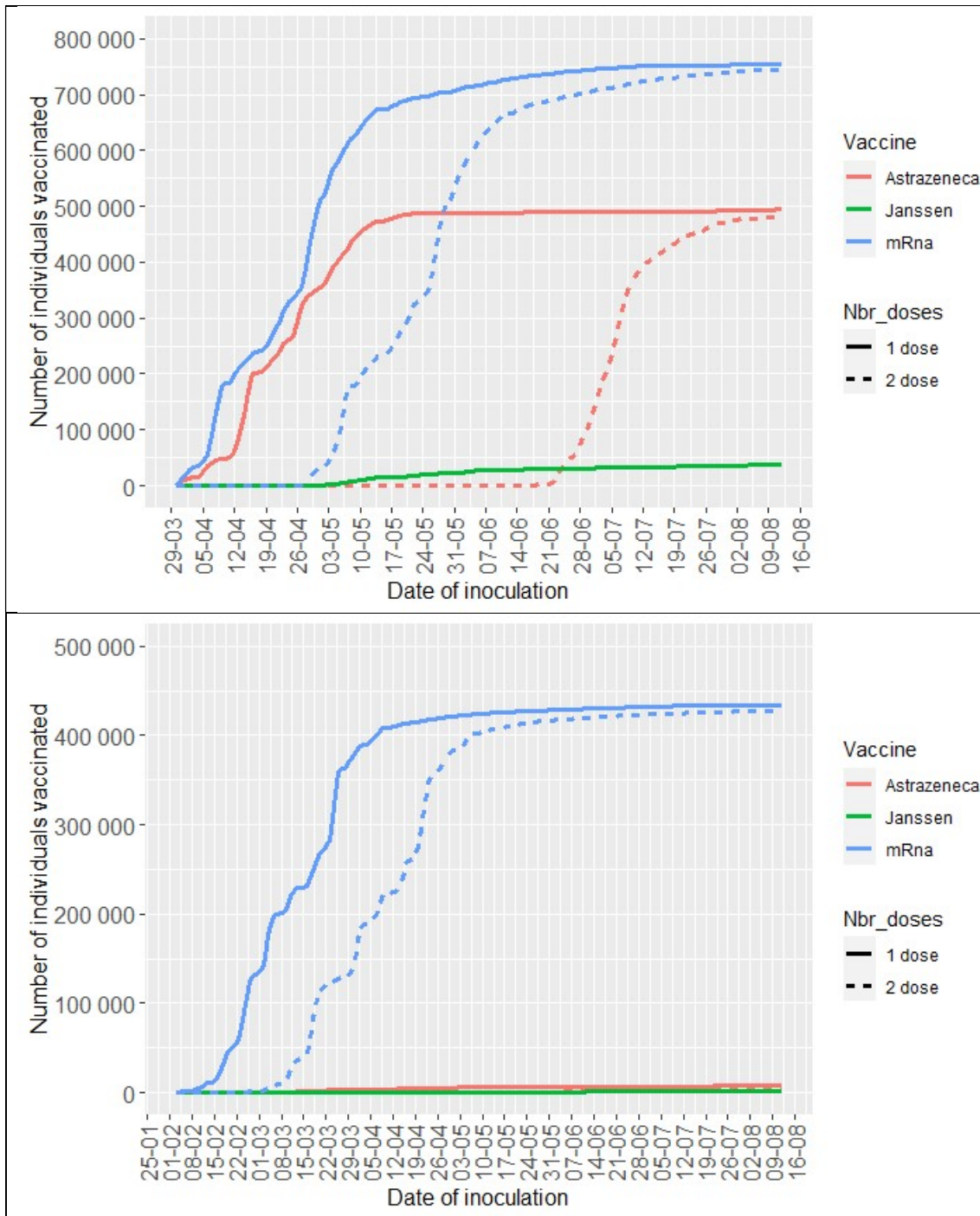
27



28

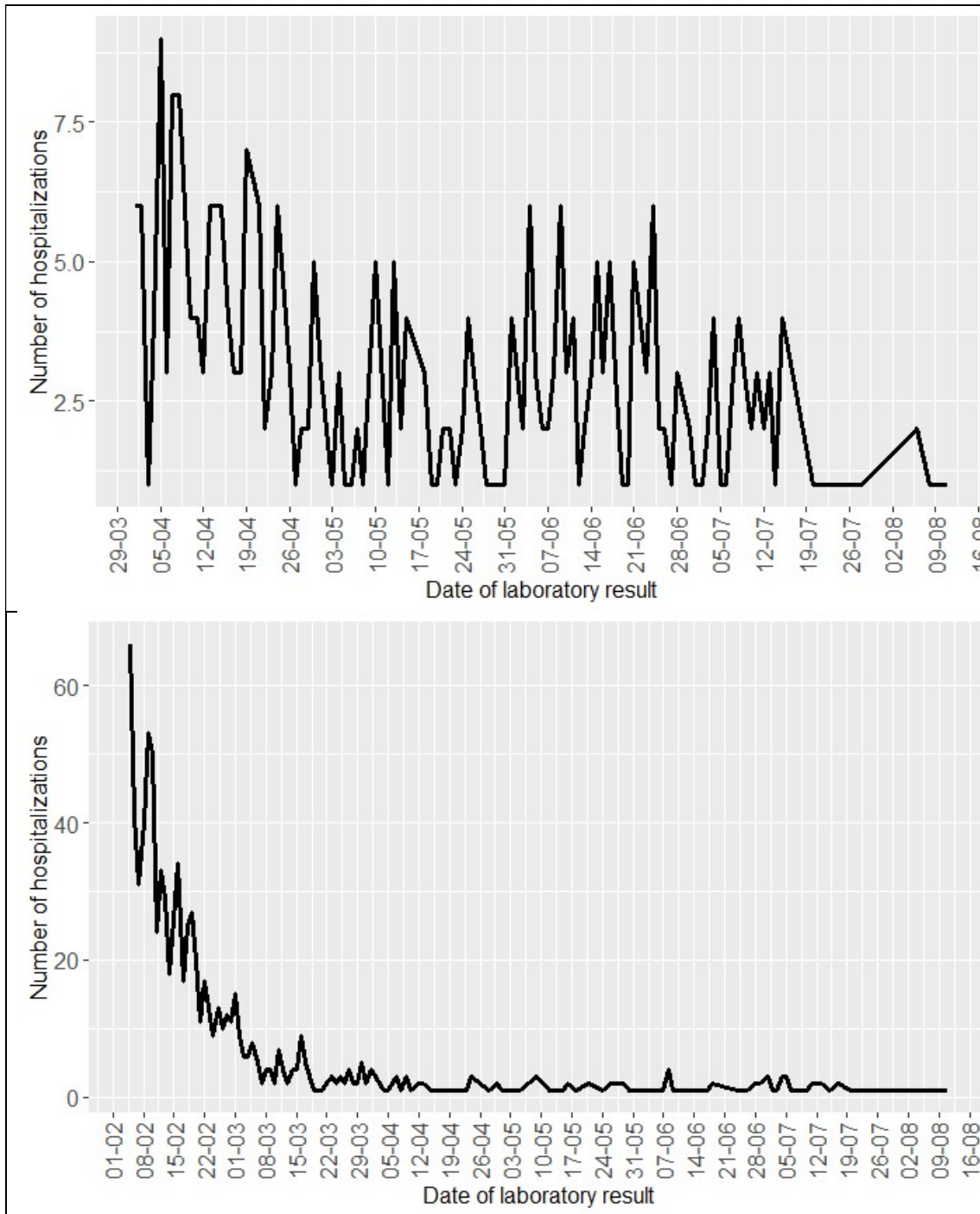
29

30 Supplementary Figure S2 - Participants selection flowcharts ≥ 80 years old cohort

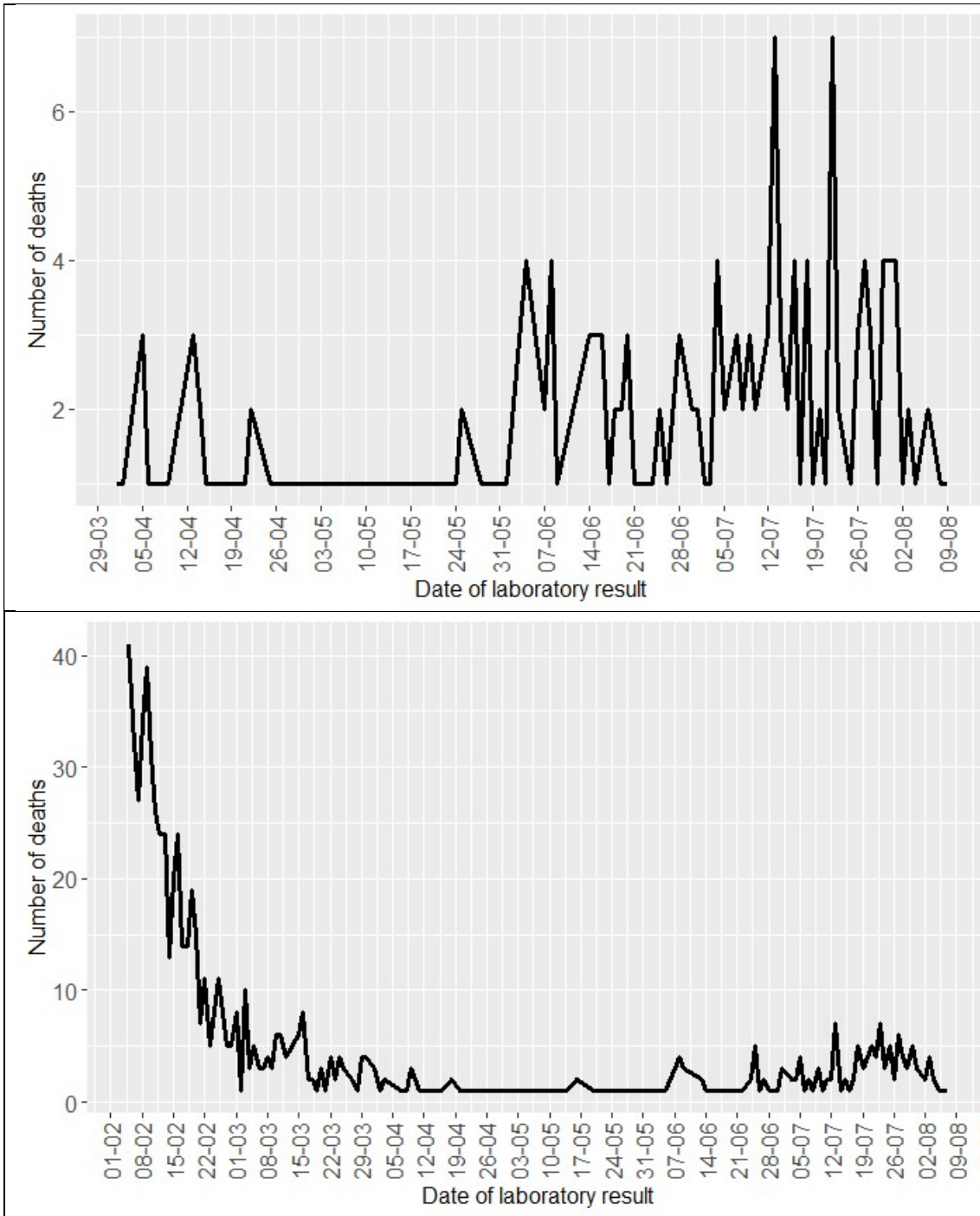


31
 32 Supplementary Figure S3– Daily accumulated number of individuals vaccinated with
 33 mRNA vaccines, according to the number of doses for the 65-79 age cohort (upper
 34 panel) and ≥ 80 years old cohort (lower panel).
 35

36
37



38 Supplementary Figure S4 – Daily number of COVID-19 hospitalizations according to
39 date of SARS-CoV-2 infection diagnosis for 65 to 79 cohort (upper panel) and ≥80
40 years old cohort (lower panel)
41



42 Supplementary Figure S5 – Daily number of COVID-19 related deaths according to
 43 date SARS-CoV-2 infection diagnosis for 65 to 79 cohort (upper panel) and ≥ 80 years
 44 old (lower panel)