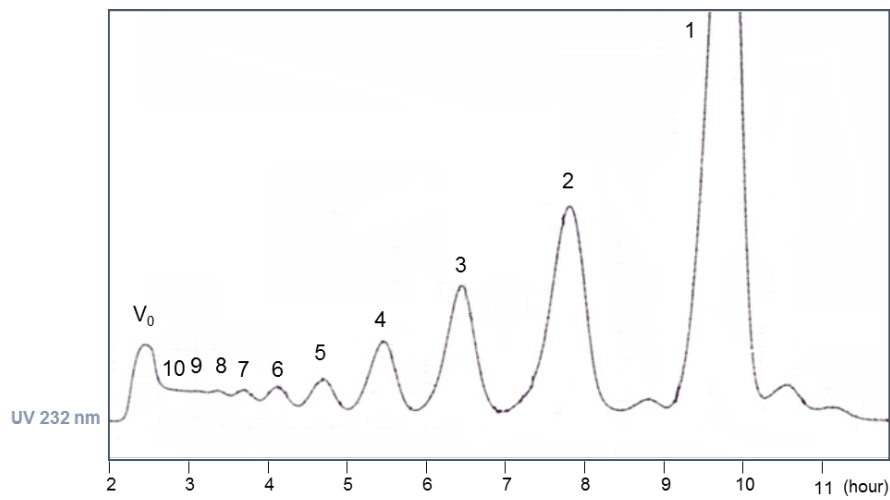
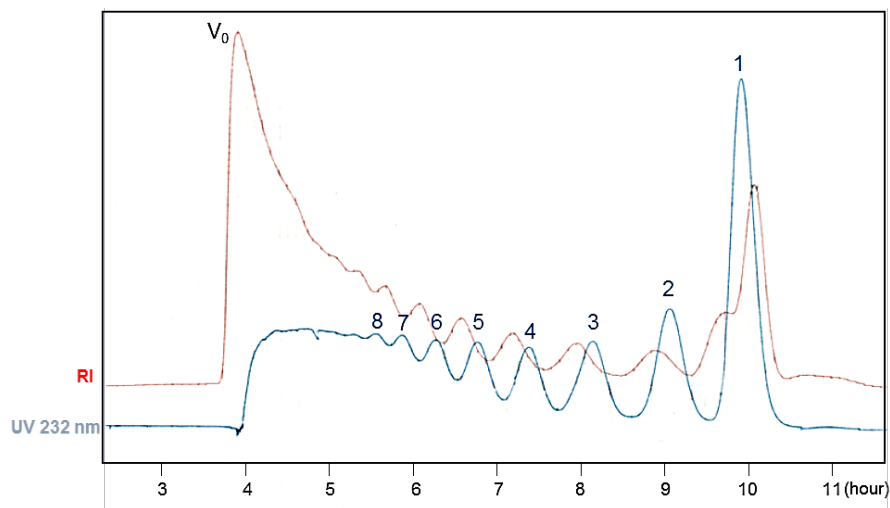


A



	Detected major ions	Deduced compositions	Assignment
F1	m/z 458.0605 (z=1)	DUA1.GalNAc1.S1	DP2
	m/z 561.0070 (z=1)	DUA1.GalNAc1.S2.Na	
F2	m/z 458.0605 (z=2)	DUA1.GlcA1.GalNAc2.S2	DP4
	m/z 837.1719 (z=1)	DUA1.GlcA1.GalNAc2.S1	
F3	m/z 709.5765 (z=2)	DUA1.GlcA2.GalNAc3.S3.Na2	DP6

B



	Detected major ions	Deduced compositions	Assignment
F1	m/z 286.9740 (z=3)	DUA1.HexN1.S3	DP2
F2	m/z 213.7894 (z=5)	DUA1.HexA1.HexN2.S5	DP4
	m/z 229.7807 (z=5)	DUA1.HexA1.HexN2.S6	

Supplemental Figure 1. Fractionation and assignment of GAG oligosaccharide fractions of CSC (A) and heparin (B). In each panel the Bio-Gel P6 chromatograph of the oligosaccharide fractions derived from partial enzyme digestion is shown followed by the table showing assignment of selected oligosaccharide fractions by negative-ion ESI-MS. DUA, 4,5-unsaturated uronic acid; GlcA, glucuronic acid; GalNAc, N-Acetylgalactosamine; HexA, hexuronic acid; HexN, Hexamine; S: sulfate. The numbers in the deduced compositions refer to monosaccharides, sulfates and sodium (Na) per molecules of oligosaccharide. DP, degree-of-polymerisation.