

THE LANCET

Supplementary appendix

This appendix formed part of the original submission and has been peer reviewed.
We post it as supplied by the authors.

Supplement to: Gureje O, Appiah-Poku J, Bello T, et al. Effect of collaborative care between traditional and faith healers and primary health-care workers on psychosis outcomes in Nigeria and Ghana (COSIMPO): a cluster randomised controlled trial. *Lancet* 2020; **396**: 612–22.

ONLINE TABLE 1: Change in mean scores between the groups

	Baseline mean scores	3-month month mean scores	Adjusted between-group mean difference (95% CI), p value	P value	6-month mean scores	Adjusted between-group mean difference averaged over three time points (95% C.I.)	P value
PANSS							
Intervention	107.3 (17.50)	71.2 (21.62)	-11.7 (-16.9 to -6.4)*	0.0001	53.41 (19.89)	-13.85 (-20, -7.73)*	0.0010
Control	108.91 (18.34)	84.0 (23.59)			67.6 (23.26)		
WHODAS							
Intervention	94.7 (29.49)	62.6 (24.81)	-10.5 (-17.9 to -3.1)**	0.0001	52.4 (25.00)	-9.34 (-17.2, -1.46)**	0.0210
Control	91.5 (28.69)	69.6 (28.97)			61.8 (28.27)		

- Adjusted by baseline PANSS and cluster; ** Adjusted by baseline WHODAS and cluster; PANSS is positive and negative syndrome scale; WHODAS is WHO disability adjustment scale.

ONLINE Table 2: Proportion reporting experiencing harmful treatment practices at different time points

Proportion reporting experience	CSC N (%)	eCAU N (%)	Adjusted* odds ratio (95% C.I)	p-value
At baseline	94(57.0)	59(41.8)	1.68(0.81,3.48)	0.1620
At 3 months	24(15.8)	16(11.9)	1.10(0.44,2.73)	0.8360
At 6 months	13(8.6)	13(9.7)	0.65(0.23,1.79)	0.4020
Change from baseline	Change in proportion (95% C.I), p value	Change in proportion (95% C.I), p value	Difference inproportion between groups (95% C.I)	
At 3 months	-0.43(-0.55 to -0.32); 0.0001	-0.31(-0.43 to -0.20); 0.0001	-0.12(-0.28 to 0.04)	0.1440
At 6 months	-0.48(-0.60 to -0.37); 0.0001	-0.33(-0.45 to -0.21); 0.0001	-0.15(-0.32 to 0.01)	0.0710

*With random effects of participants nested in the random effects for clusters

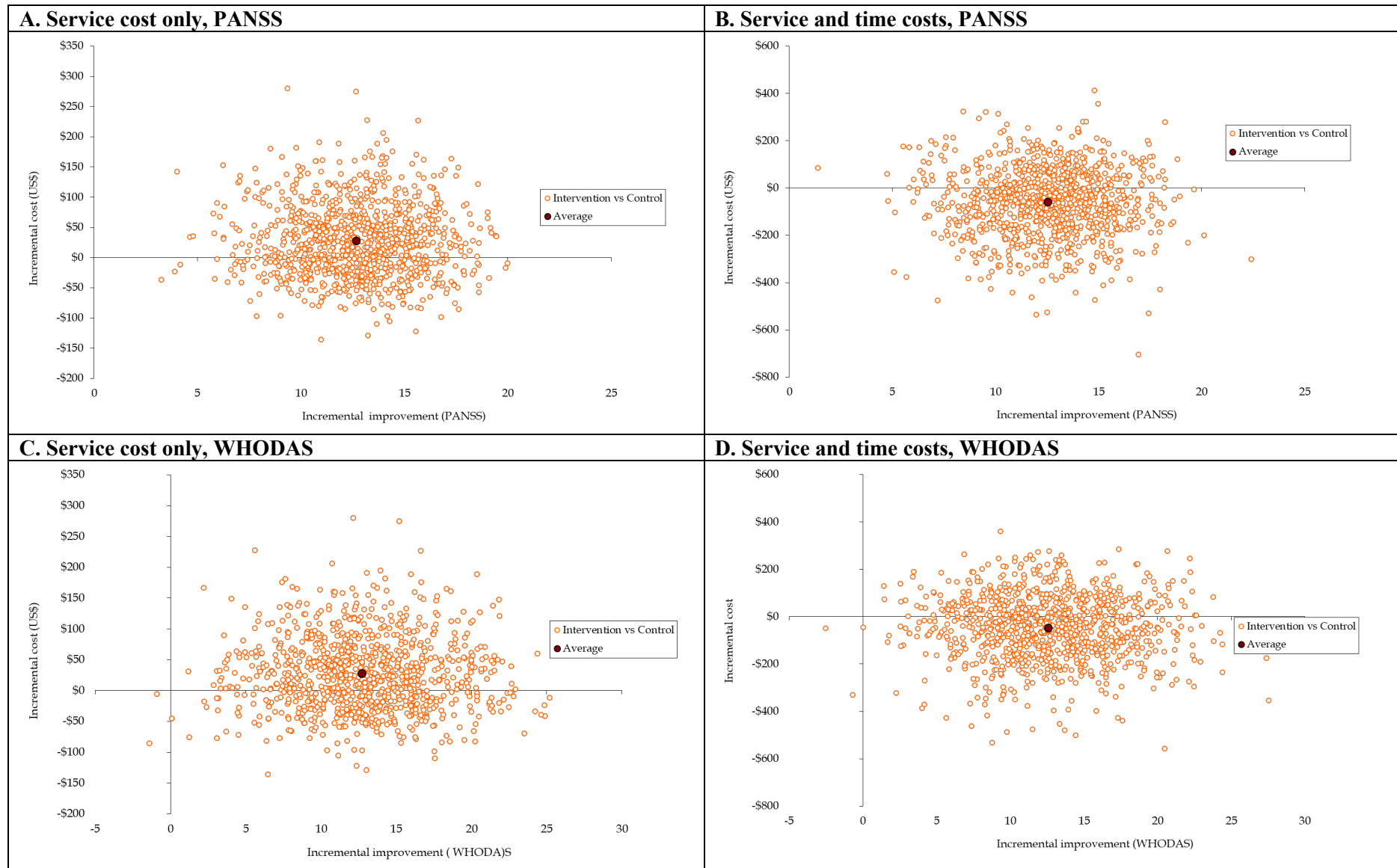
ONLINE Table 3: Health service and time costs (mean, SD), by treatment arm point (costs are in 2017/8 US\$)

	3-month cost prior to baseline		3-month cost prior to 3-month follow-up		3-month cost prior to 6-month follow-up		6-month cost since baseline	
	CSC	eCAU	CSC	eCAU	CSC	eCAU	CSC	eCAU
<u>COSIMPO trial costs</u>								
Cost of incentives to PHCW	-	-	18(10)	-	6(10)	-	24(19)	-
Cost of training (PHCW)	-	-	15(0)	4(0)	-	-	15(0)	4(0)
Cost of training (TFH)	-	-	21(0)	7(0)	-	-	21(0)	7(0)
Sub-total	-	-	53(11)	11(0)	6(10)	-	59(19)	11(0)
<u>Formal(biomedical) health service costs</u>								
Hospital inpatient care(psychiatric)	2(15)	25(295)	4(31)	-	-	-	4(31)	-
Hospital inpatient care(non-psychiatric)	-	-	-	-	-	-	-	-
Psychiatrist (outpatient)	8(64)	7(29)	3(13)	9(59)	8(42)	9(35)	10(47)	18(69)
Primary healthcare doctor	1(4)	-	2(21)	0(2)	0(2)	-	2(21)	0(2)
Other doctor/physician	0(0)	-	0(0)	0(0)	0(0)	0(3)	0(0)	0(3)
Primary healthcare provider(non-physician)	1(6)	2(9)	11(25)	3(10)	14(40)	2(10)	25(59)	5(15)
Nurse	-	-	28(24)	-	6(15)	-	34(35)	-
Medications	28(52)	28(54)	23(35)	21(36)	13(22)	15(29)	36(42)	36(50)
Lab test cost	0(4)	-	-	0(0)	-	-	0(0)	0(0)
Other cost	-	-	1(15)	0(1)	-	-	1(15)	0(1)
Sub-total	40(83)	62(318)	72(71)	34(73)	42(77)	25(47)	113(116)	58(90)
<u>Informal (TFH) service costs</u>								
Inpatient care (TFH facilities)	204(302)	171(372)	157(226)	114(140)	91(126)	69(84)	245(287)	182(179)
Out-patient TFH service	1(15)	0(2)	2(9)	7(36)	6(18)	9(74)	8(20)	16(82)
Other TFH costs	-	-	0(2)	2(12)	0(4)	1(4)	1(4)	2(12)
Rituals/sacrifices cost	8(36)	15(44)	2(11)	8(20)	2(16)	7(18)	4(19)	14(30)
Sub-total	214(303)	186(374)	161(225)	130(138)	100(126)	86(108)	257(284)	214(180)
Total service cost	254(316)	248(673)	283(243)	175(148)	148(161)	111(112)	429(334)	284(191)
Time costs (service user)	38(171)	27(87)	6(31)	13(55)	4(45)	1(16)	10(54)	15(63)
Time costs (family/friend)	133(275)	150(672)	95(466)	51(115)	96(230)	179(1216)	188(535)	228(1235)
Sub-total	171(393)	177(677)	101(466)	65(131)	99(233)	181(1216)	197(536)	242(1236)
Total service and time cost	425(534)	425(976)	382(548)	240(201)	247(318)	292(1214)	627(701)	526(1240)

CSC, collaborative shared care; eCAU, enhanced care as usual

PANSS, positive syndrome scale; WHODAS, WHO disability assessment scale; PHCW, primary health care workers; TFH, traditional and faith healers.

ONLINE FIGURE: Scatter graphs showing incremental difference in costs (US\$ over 3 months) and effects between intervention and control groups at 6-month follow-up



PANSS, positive and negative syndrome scale; WHODAS, WHO disability assessment scale.