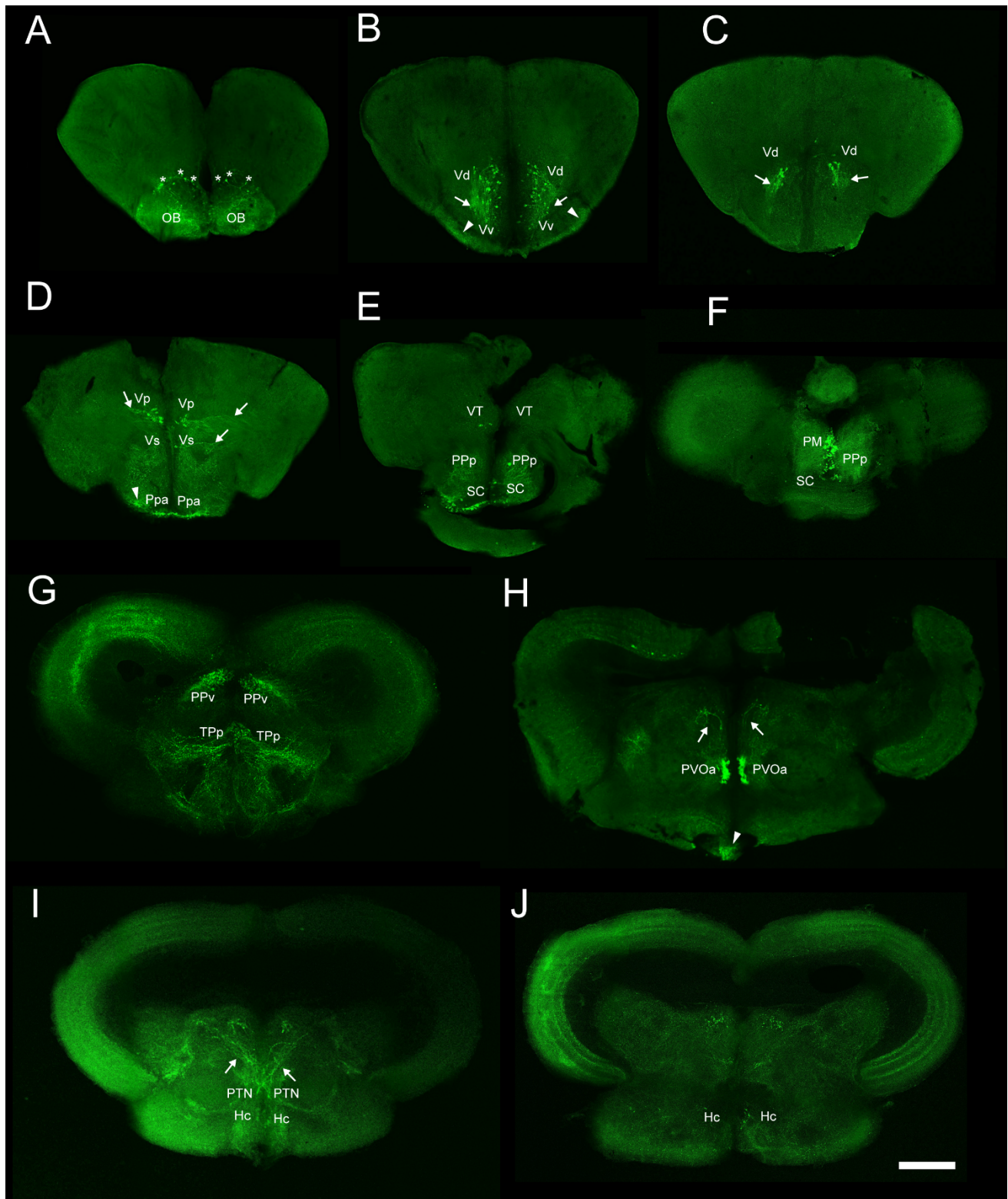
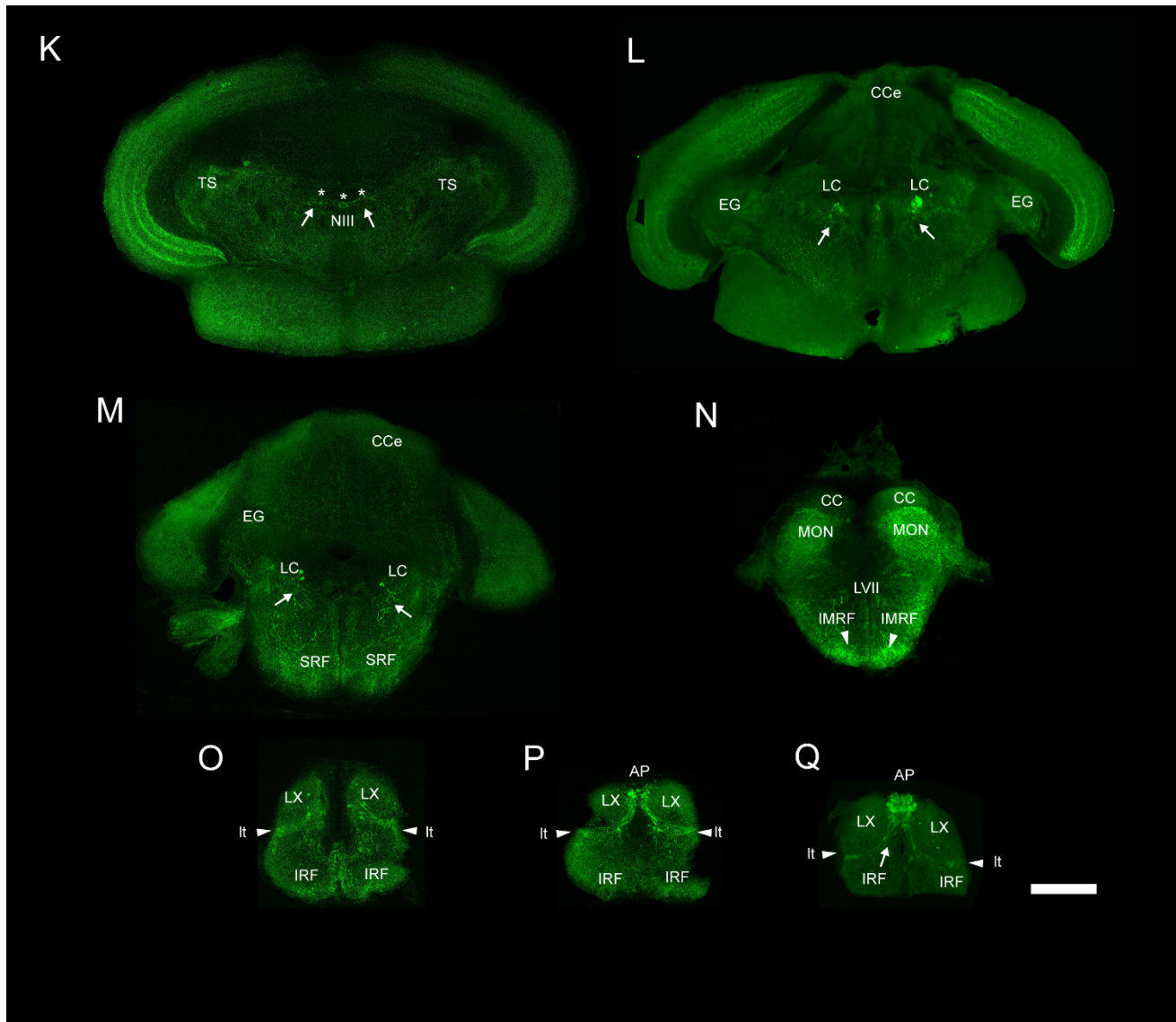
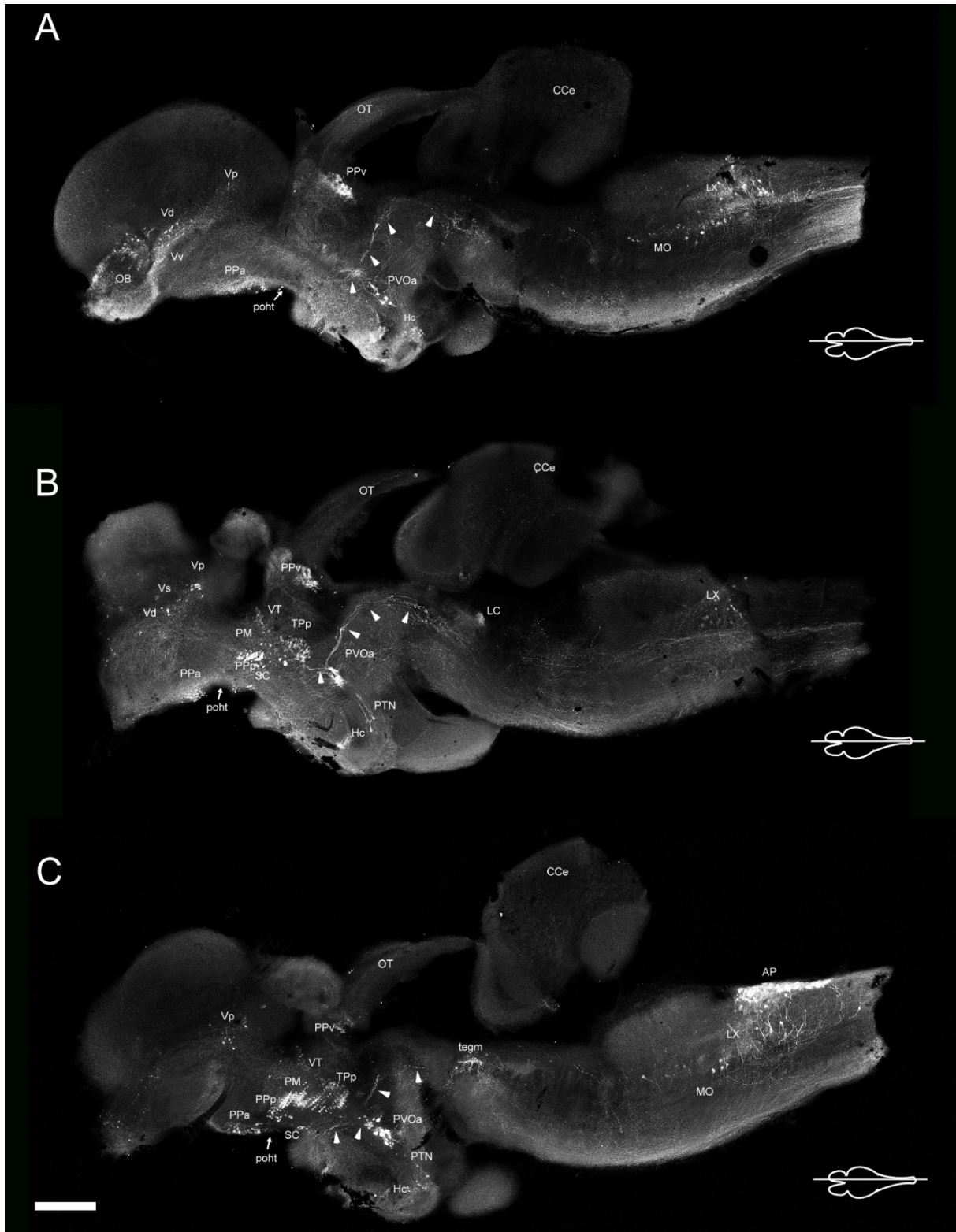


*Supplementary Material*

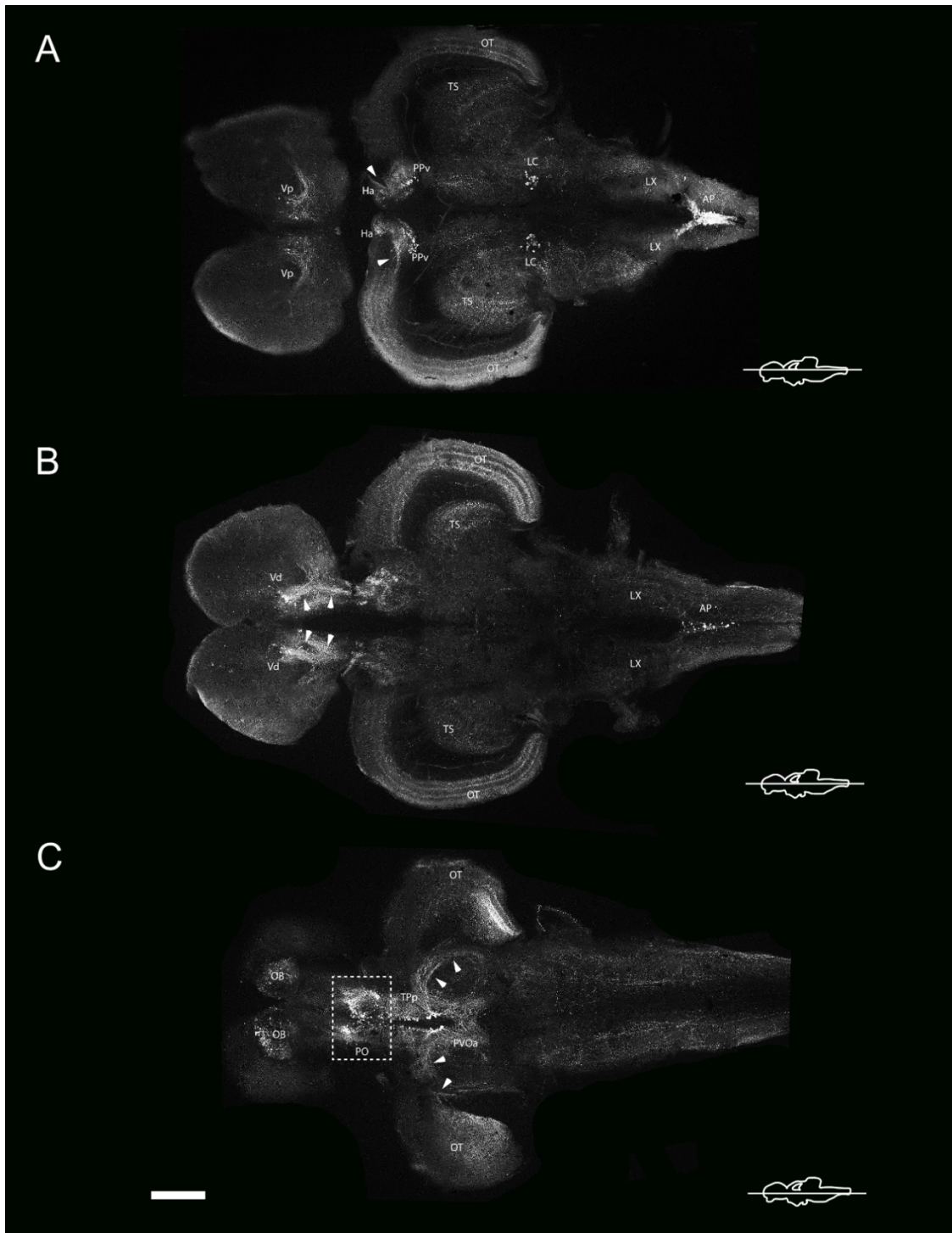




**Supplementary Figure 1. Photomicrographs of transverse sections (in rostral to caudal order) showing the anti-TH immunofluorescence in the brain of *Nothobranchius furzeri*.** Asterisks point neuronal somas, arrows show the direction of the processes and arrowheads indicate regions with intense density of TH+ neuropil or tracts. For more details see the text and for abbreviations see list. Scale bar, 500  $\mu$ m.



**Supplementary Figure 2. Photomicrographs of para-sagittal sections near the midline (from lateral towards the midline), showing the distribution of TH+ neuronal groups and fibers/tracts through the brain of *Nothobranchius furzeri*. Arrowheads point to TH+ fibers arising from the paraventricular organ-accompanying cells and arrows indicate the preopticohypothalamic tract. For more details see the text and for abbreviations see list. Scale bar, 500  $\mu$ m.**



**Supplementary Figure 3. Photomicrographs of horizontal sections (in dorsal to ventral order) showing the distribution of TH+ cellular groups and fibers/tracts along the rostrocaudal axis of the brain in *Nothobranchius furzeri*.** Arrowheads in (A) indicate the TH+ fibers of the ventral periventricular pretectal nucleus reaching the optic tectum, in (B) the fibers from the posterior zone of ventral telencephalon following a caudal direction, and in (C) the direction of processes from the paraventricular organ-accompanying cells. For more details see the text and for abbreviations see list. Scale bar, 500  $\mu\text{m}$