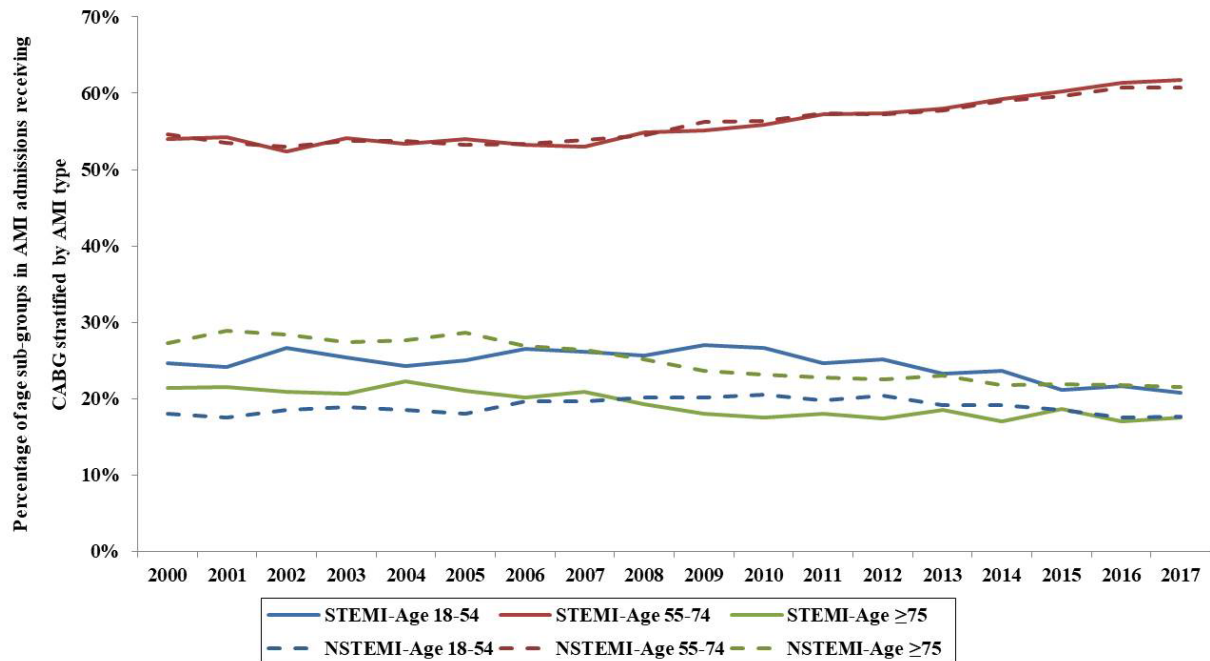


SUPPLEMENTAL MATERIAL

Table S1. Administrative codes used for identification of diagnoses and procedures.

Comorbidity	International Classification of Diseases 9.0 Clinical Modification Codes
Coronary artery bypass grafting	36.10, 36.11, 36.12, 36.13, 36.14, 36.15, 36.16, 36.19
Cardiogenic shock	785.51
Cardiac arrest	427.5, 427.4, 427.41, 427.42, 99.60, 99.63
Coronary angiography	37.22, 37.23, 88.53-88.56
Percutaneous coronary intervention	00.66, 36.01, 36.02, 36.05, 36.06, 36.07, 88.57
Invasive hemodynamic assessment	89.63, 89.64, 89.66, 89.67, 89.68
Mechanical circulatory support	37.61, 37.68, 39.65
Invasive mechanical ventilation	96.7, 96.70, 96.71, 96.72
Hemodialysis	39.95
Multi-organ failure	570.0, 572.2, 573.3, 573.4
	518.81, 518.82, 518.85, 786.09, 799.1, 96.7, 96.70, 96.71, 96.72
	584, 584.5, 584.6, 584.7, 584.8, 584.9
	286.6-286.9, 287.4, 287.5
	293, 293.0, 293.1, 293.8, 293.81-293.84, 293.89, 293.9, 348.1, 348.3, 348.30,
	348.81, 348.39, 780.01, 780.09, 89.14
Tracheostomy	311, 312, 3121, 3129

Figure S1. Temporal trends of admissions receiving CABG across various sub-groups of age stratified by AMI type.



Temporal trends of percentage of age sub-groups in AMI admissions receiving CABG stratified by type of AMI; all $p < 0.001$ for trend

AMI: acute myocardial infarction; CABG: coronary artery bypass grafting; NSTEMI: non-ST-segment elevation myocardial infarction; STEMI: ST-segment elevation myocardial infarction