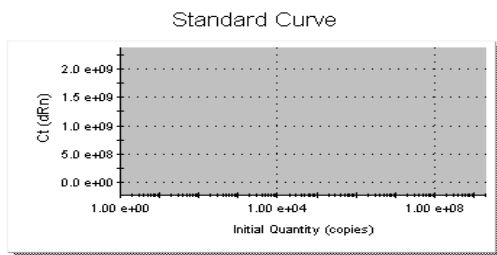
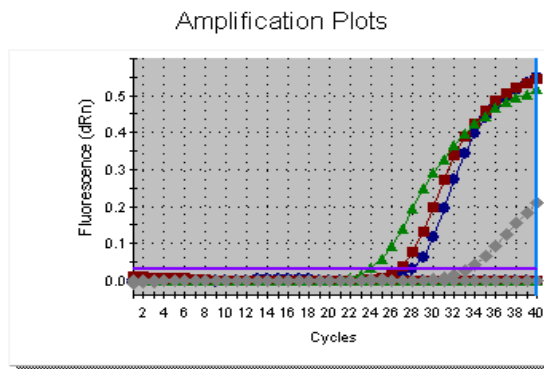
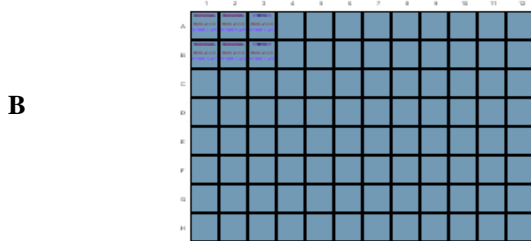


Analysis Sel./Setup-Term Settings View
 Amplification-based threshold using search range of 5 to 60 percent.
 Moving average points for amplification = 3, dissociation = 3.
 Dissociation graphical temperature separation = 0.50.
 Baseline Settings Plate: * indicates manual baseline cycle range settings.



Some of the standard curves have not been displayed
 SYBR had <2 unique standard wells with reference dye.

C

Replicate	Well Type	Threshold (dRn)	Ct (dRn)
1	Unknown	Reference	Reference
1	Unknown	0,0293	26.01
2	NTC	Reference	Reference
2	NTC	0,0293	26.68
3	Unknown	Reference	Reference
3	Unknown	0,0293	23.86
4	NTC	Reference	Reference
4	NTC	0,0293	33.31

Figure: S1



Figure: S2

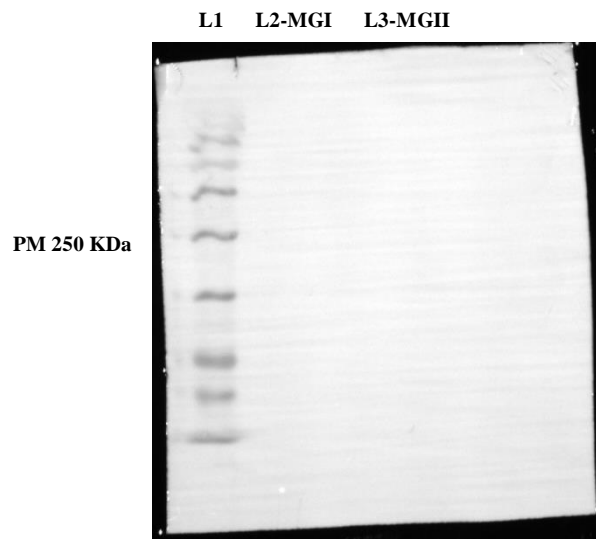


Figure: S3