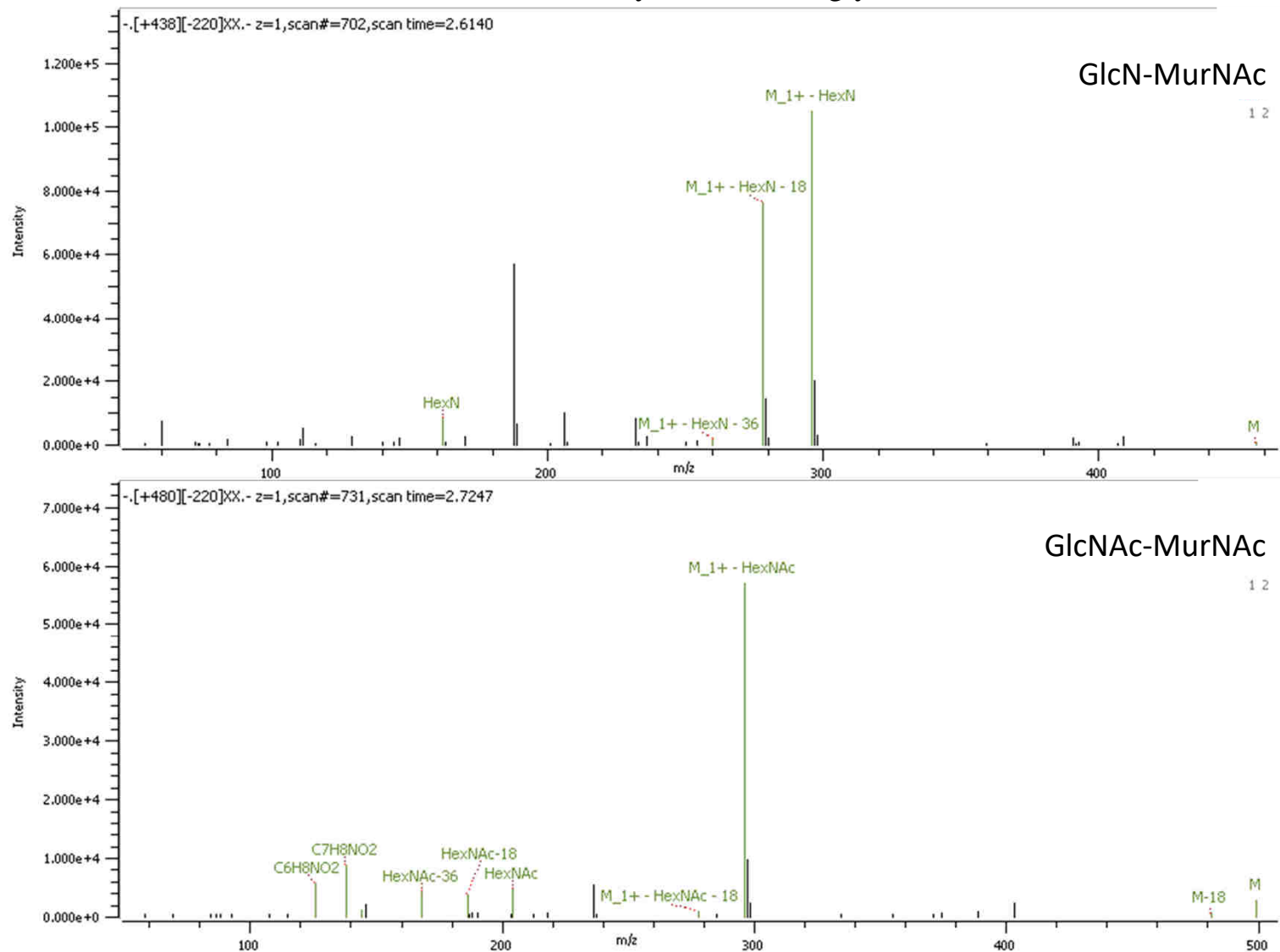
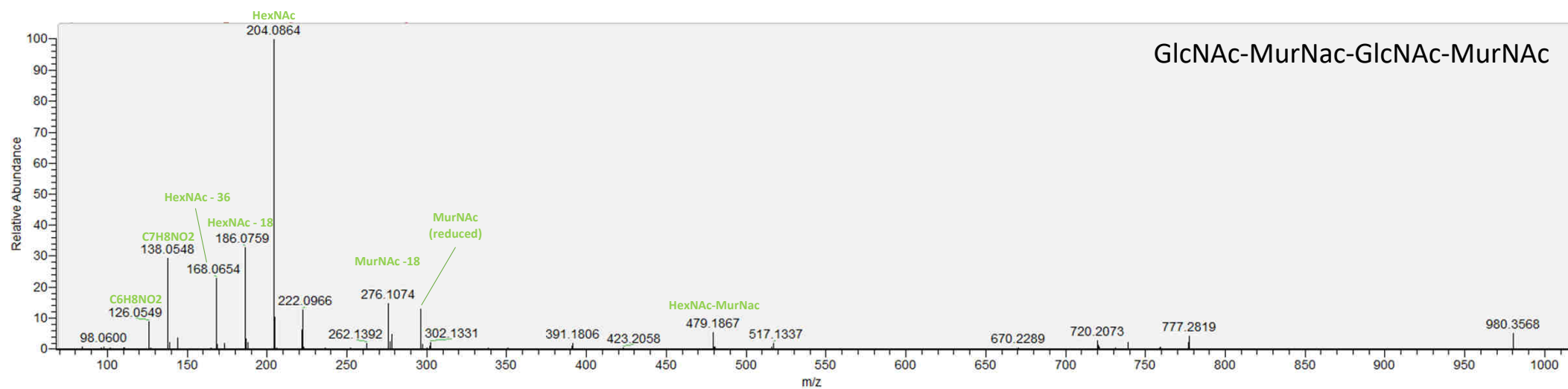


**Table 1—source data 3. MS/MS analysis of *E. coli* glycan chains and monomers.**



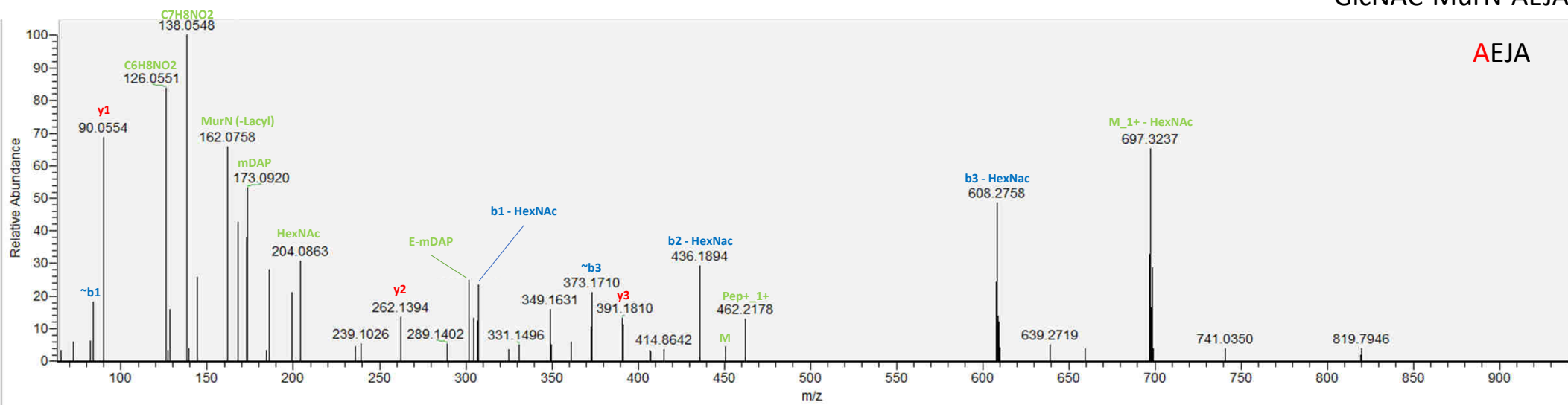
20200124\_Ecoli\_WT\_d10\_BGPB\_02 #2769 RT: 10.10 AV: 1 NL: 6.41E5  
F: FTMS + p ESI d Full ms2 977.3895@hcd25.00 [67.6667-1015.0000]



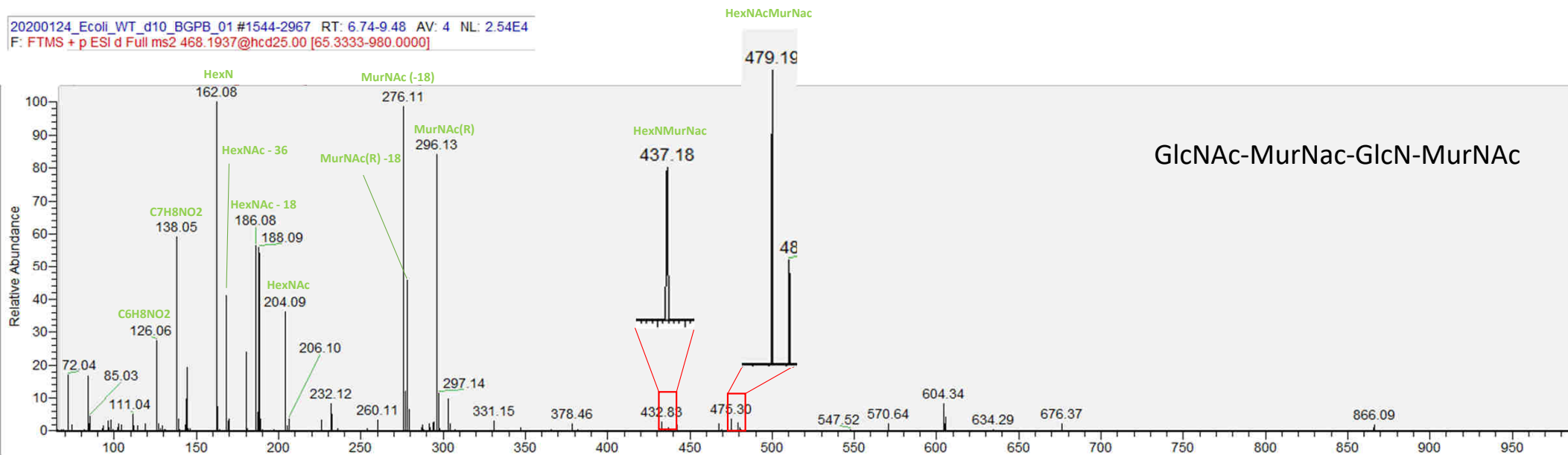
20200124\_Ecoli\_WT\_d10\_BGPB\_02#2311 RT: 8.56 AV: 1 NL: 1.30E4  
F: FTMS + p ESI d Full ms2 450.7044@hcd25.00 [62.6667-940.0000]

GlcNAC-MurN-AEJA

AEJA



20200124\_Ecoli\_WT\_d10\_BGPB\_01 #1544-2967 RT: 6.74-9.48 AV: 4 NL: 2.54E4  
F: FTMS + p ESI d Full ms2 468.1937@hcd25.00 [65.3333-980.0000]



GlcNAc-MurNac-GlcN-MurNac

