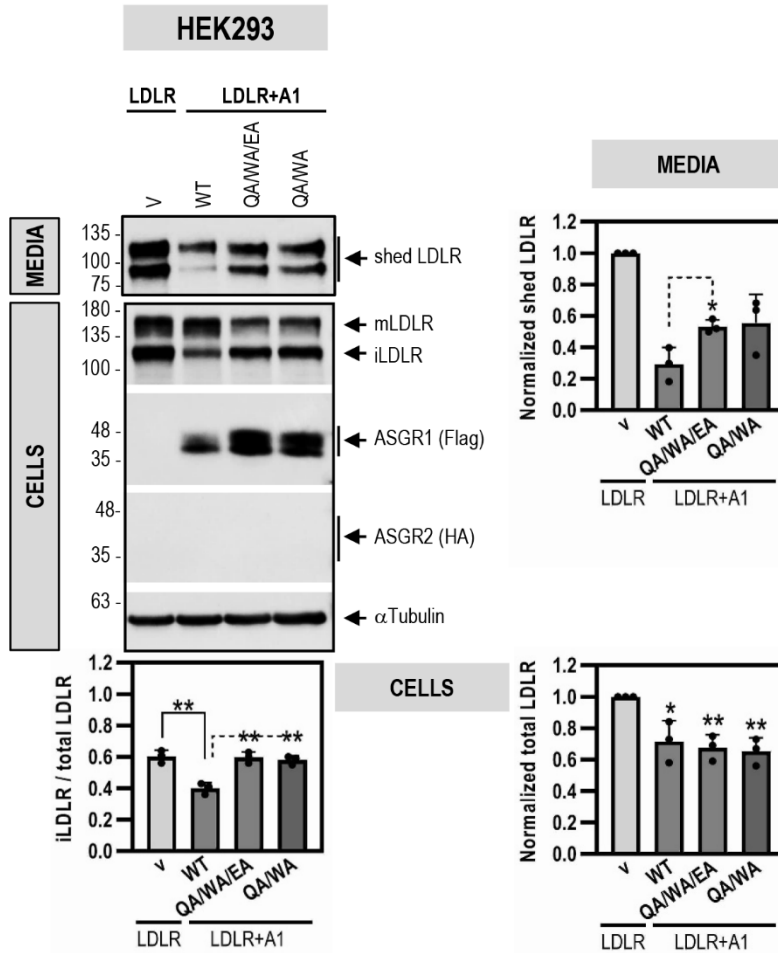


Supplementary Table S1. Antibodies used for Western blotting, immunofluorescent staining, immunohistochemical staining and immunoprecipitation

Antibody	Catalog No; Source	Application	Dilution
human LDLR	AF2148; R&D	WB	1:1,000
mouse LDLR	AF2255; R&D	WB	1:1,000
ASGR1	11739-1-AP; Proteintech	WB	1:1,000
α-Tubulin	11224-1-AP; Proteintech	WB	1:5,000
μ-Actin	A2066; Sigma	WB	1:5,000
Insulin receptor β	ENZ-ABS710; Enzo	WB	1:1,000
CD36	Ab36977; Abcam	WB	1:1,000
human PCSK9	(1)	WB	1:3,000
Flag-HRP	A8592; Sigma	WB	1:5,000
HA-HRP	H6533; Sigma	WB	1:4,000
V5-HRP	V2260; Sigma	WB	1:10,000
Rabbit TrueBlot®: Anti-Rabbit IgG HRP	18-8816-31; Rockland Inc.	WB	1:2,000
human LDLR	AF2148; R&D	IF	1:200
ASGR1	11739-1-AP; Proteintech	IF	1:200
mouse LDLR	AF2255; R&D	IHC	1:150
ASGR1	11739-1-AP; Proteintech	IHC	1:300
Goat anti rabbit IgG Alexa Fluor 488	A27034; Invitrogen	IHC/IF	1:150/1:500
Donkey anti goat IgG Alexa Fluor 488	A-11055; Invitrogen	IHC/IF	1:150/1:500
Flag M2	F1804; Sigma	IP/IF	n/a /1:250
V5	R960-25; Invitrogen	IP	n/a
ASGR1	11739-1-AP; Proteintech	IP	n/a

WB, Western blot; IF, immunofluorescence; IHC, immunohistochemistry

1. Nassoury, N., Blasiolo, D. A., Tebon, O. A., Benjannet, S., Hamelin, J., Poupon, V., McPherson, P. S., Attie, A. D., Prat, A., and Seidah, N. G. (2007) The Cellular Trafficking of the Secretory Proprotein Convertase PCSK9 and Its Dependence on the LDLR. *Traffic*. **8**, 718-732



Supplementary Figure S1: The ASGR1-mediated degradation of LDLR through its lectin-binding domain is independent of ASGR2 when co-expressed in HEK293 cells

HEK293 cells were co-transfected with V5-tagged LDLR and either Flag-tagged ASGR1 (A1), WT or its carbohydrate-binding mutants Q240A/W244A/E253A (QA/WA/EA) or Q240A/W244A (QA/WA) or control empty vector (V). WB analyses of total cellular LDLR (mature mLDLR, and immature iLDLR) and ASGR1 (Flag-HRP) and of shed LDLR in the media are shown. The empty vector control (V) is the same as the one used for Figs. 7 and 9C. This is justified since the above control data are derived from the same experiment testing the effects on LDLR of ASGR2 alone (Fig. 7), and of ASGR1 in the presence (Figs. 7, 9C), or absence of ASGR2 (Fig. 7 and present Supplementary Figure S1). Quantifications are averages \pm SD of three independent experiments. * $p < 0.1$; ** $p < 0.01$ (t-test) are relative to the control vector condition.