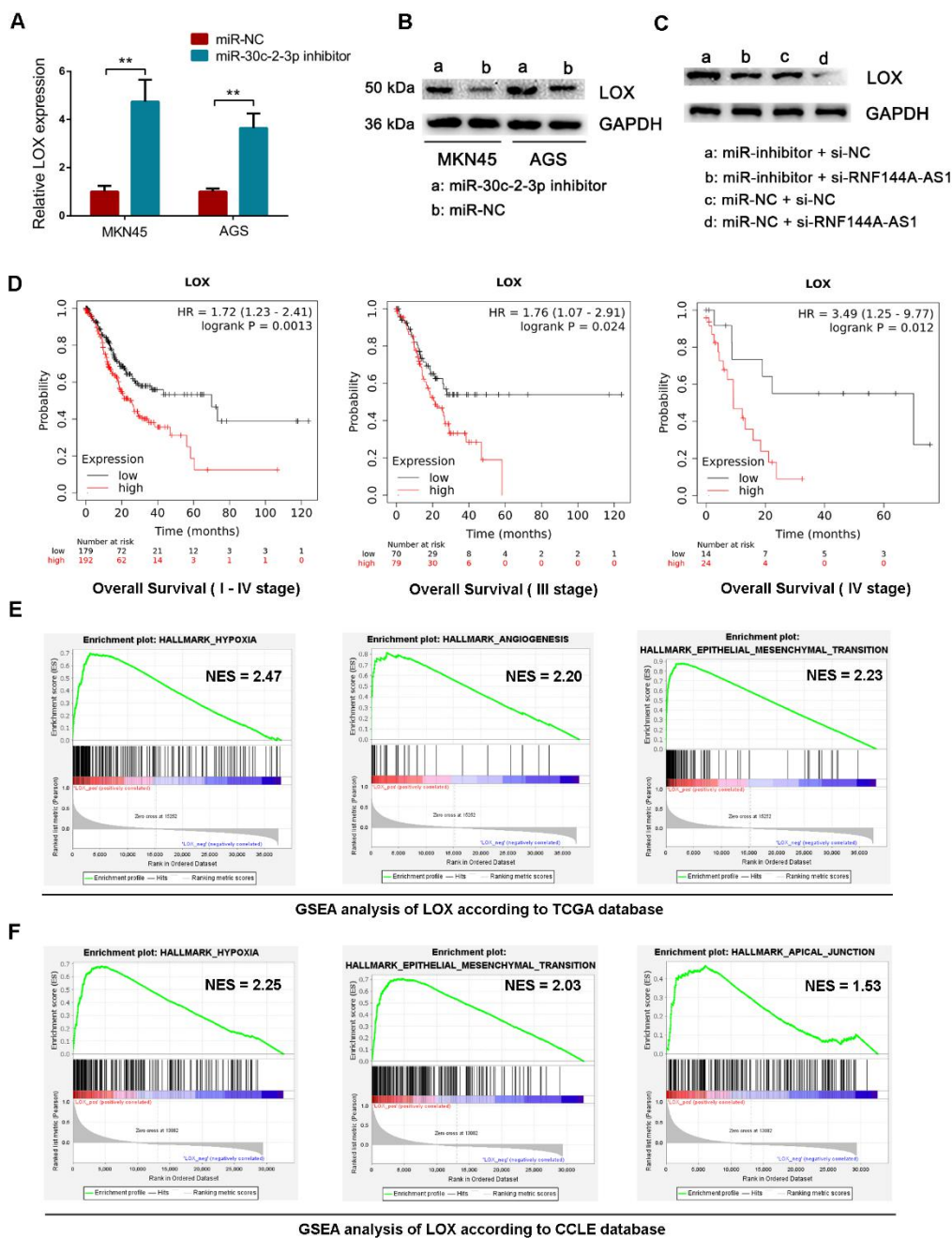


Additional file 7: Figure S4



**Figure S4** LOX predicted poor prognosis of GC patients and was a target of miR-30c-2-3p. **A** qRT-PCR analysis of LOX in GC cells transfected with miR-30c-2-3p inhibitor or control. **B** Western blot analysis of LOX in GC cells

transfected with miR-30c-2-3p inhibitor or control. **C** The expression of LOX in MKN45 cells co-transfected with miR-30c-2-3p inhibitor and RNF144A-AS1 siRNA. **D** Kaplan–Meier analysis showed the association between LOX expression and overall survival of gastric cancer patients with I-IV stages (left panel), III stage (middle panel), IV stage (right panel). *P*-value from log-rank test. **E** GSEA analysis of LOX based on gene expression data extracted from TCGA database. **F** GSEA analysis of LOX based on gene expression data extracted from the CCLE database. Error bars, mean  $\pm$  SD from triplicate samples. **\*\****P* < 0.01 by Student's *t*-test unless otherwise specified.