

Cytoplasmic fraction

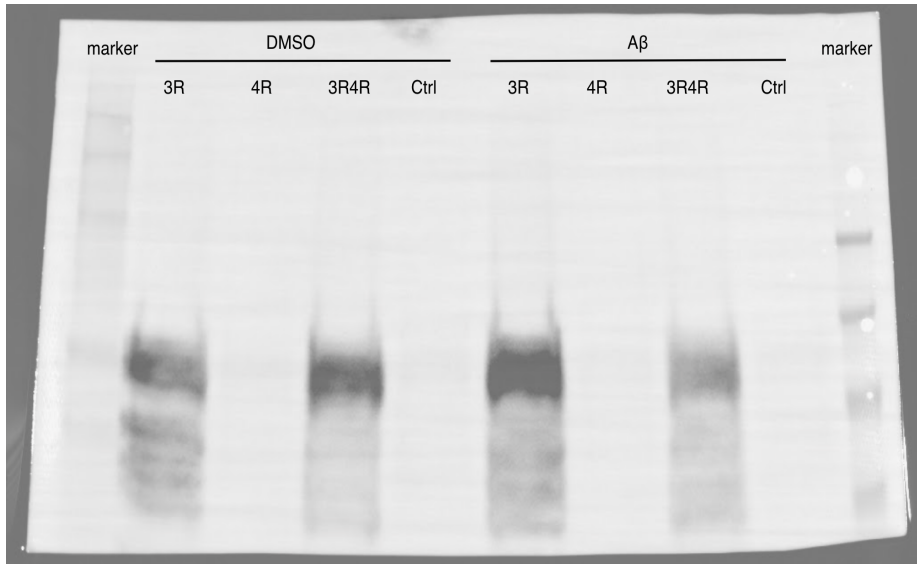
Nuclear fraction

3R tau primary antibody

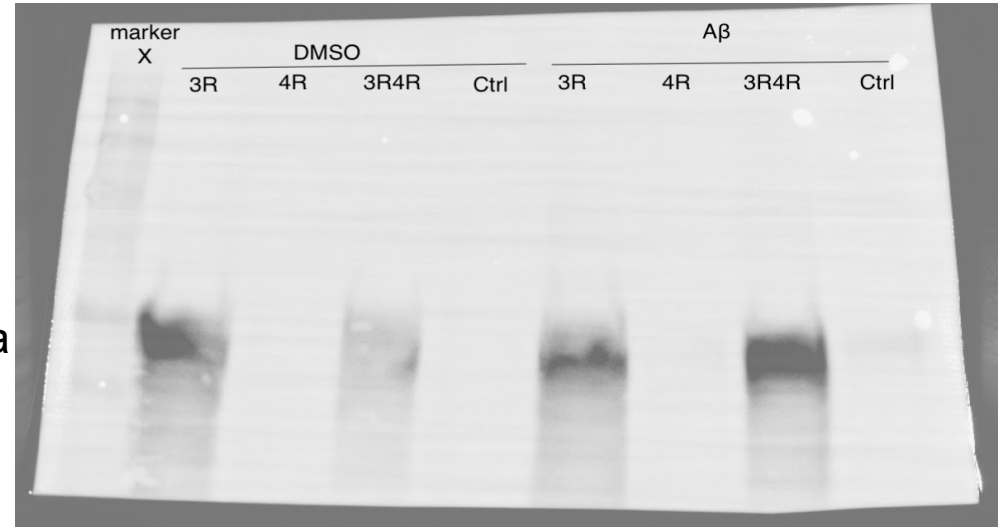
H3 primary antibody

GAPDH primary antibody

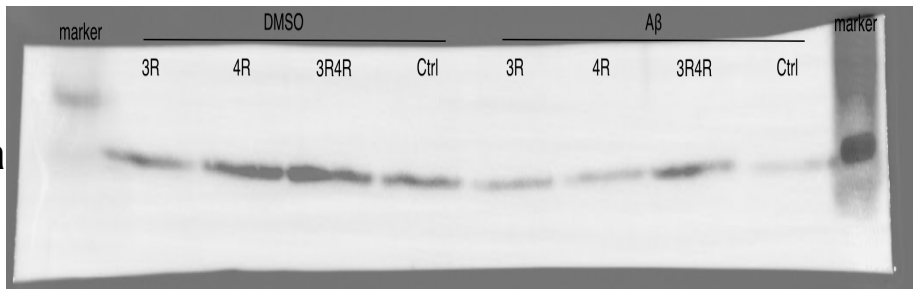
50 kDa



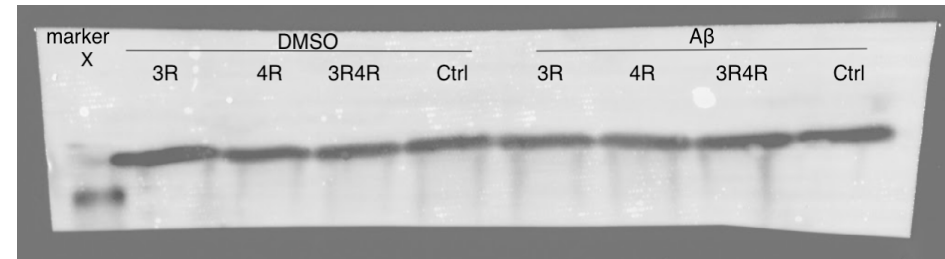
45 kDa



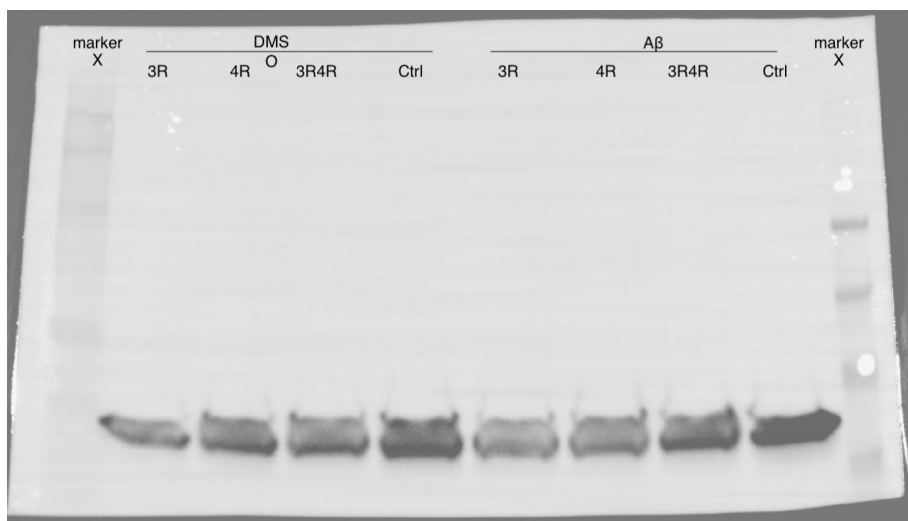
20 kDa



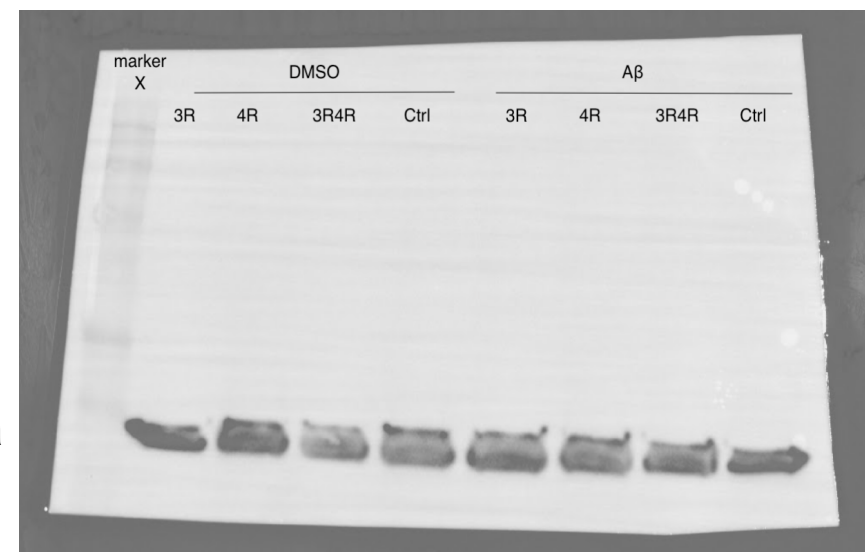
17 kDa



33 kDa



35 kDa



* All blots shown on this page were used in Fig 1A; top left and top right images.

Cytoplasmic fraction

Nuclear fraction

4R tau primary antibody

H3 primary antibody

GAPDH primary antibody

50 kDa

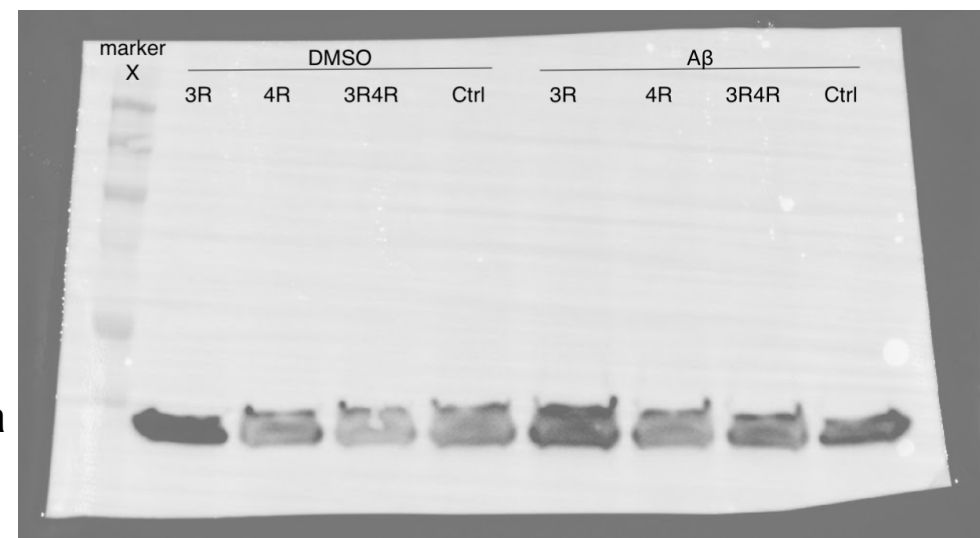
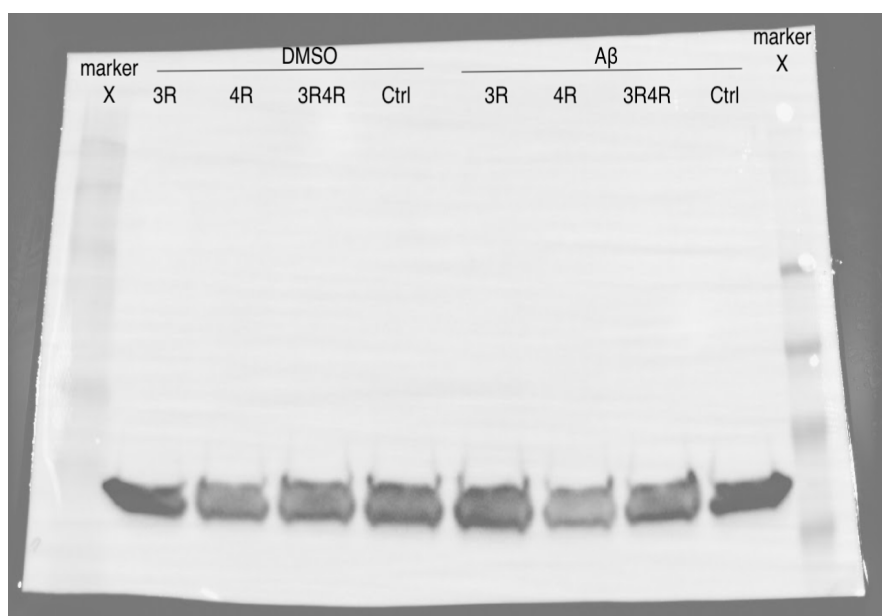
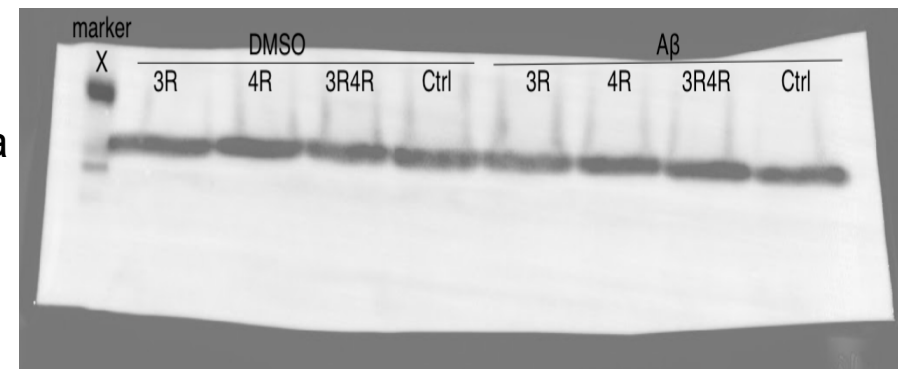
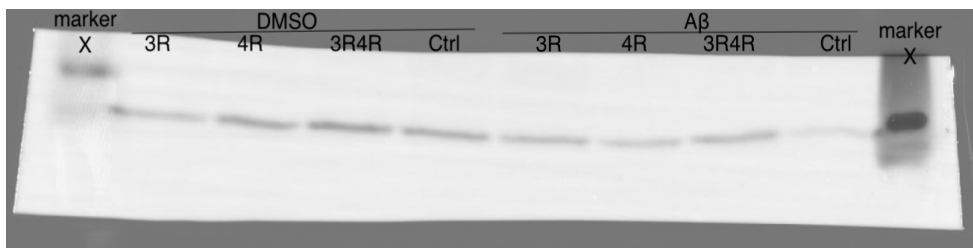
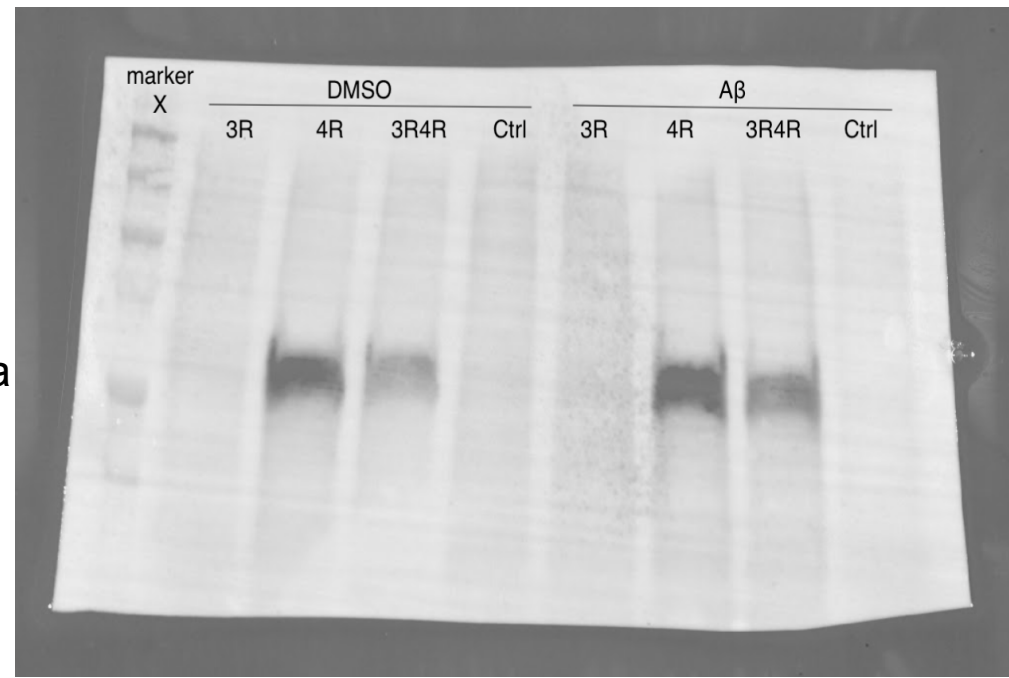
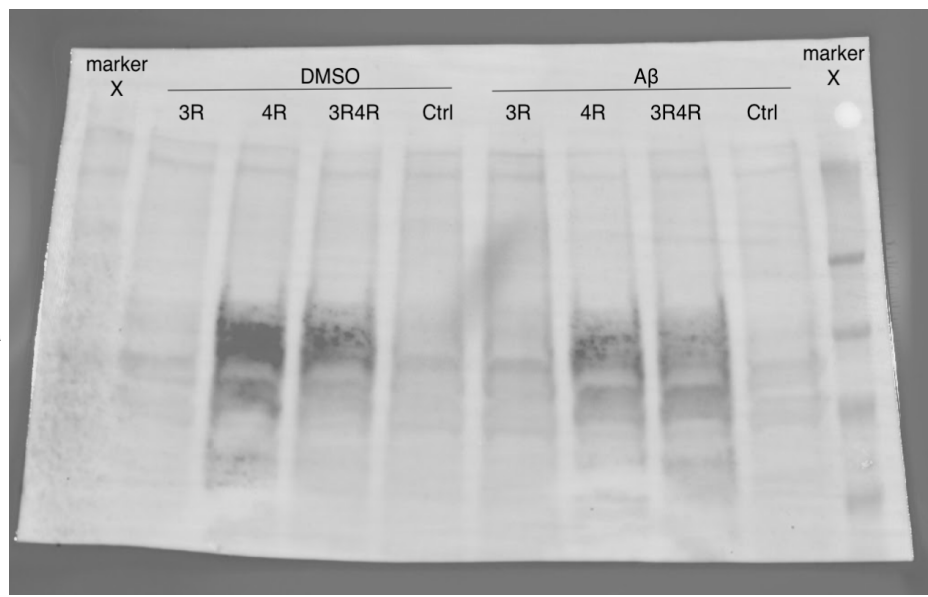
50 kDa

20 kDa

17 kDa

33 kDa

35 kDa



* All blots shown on this page were used in Fig 1A; bottom left and bottom right images.