

Figure S1 EGFR mutation types could not predict the recurrence-free survival in patients with pT1a and pT1b invasive lung adenocarcinoma after excluding LPA and puro GGO. EGFR, epidermal growth factor receptor; LPA, lepidic pattern-predominant adenocarcinoma; GGO, pure ground-glass opacity.

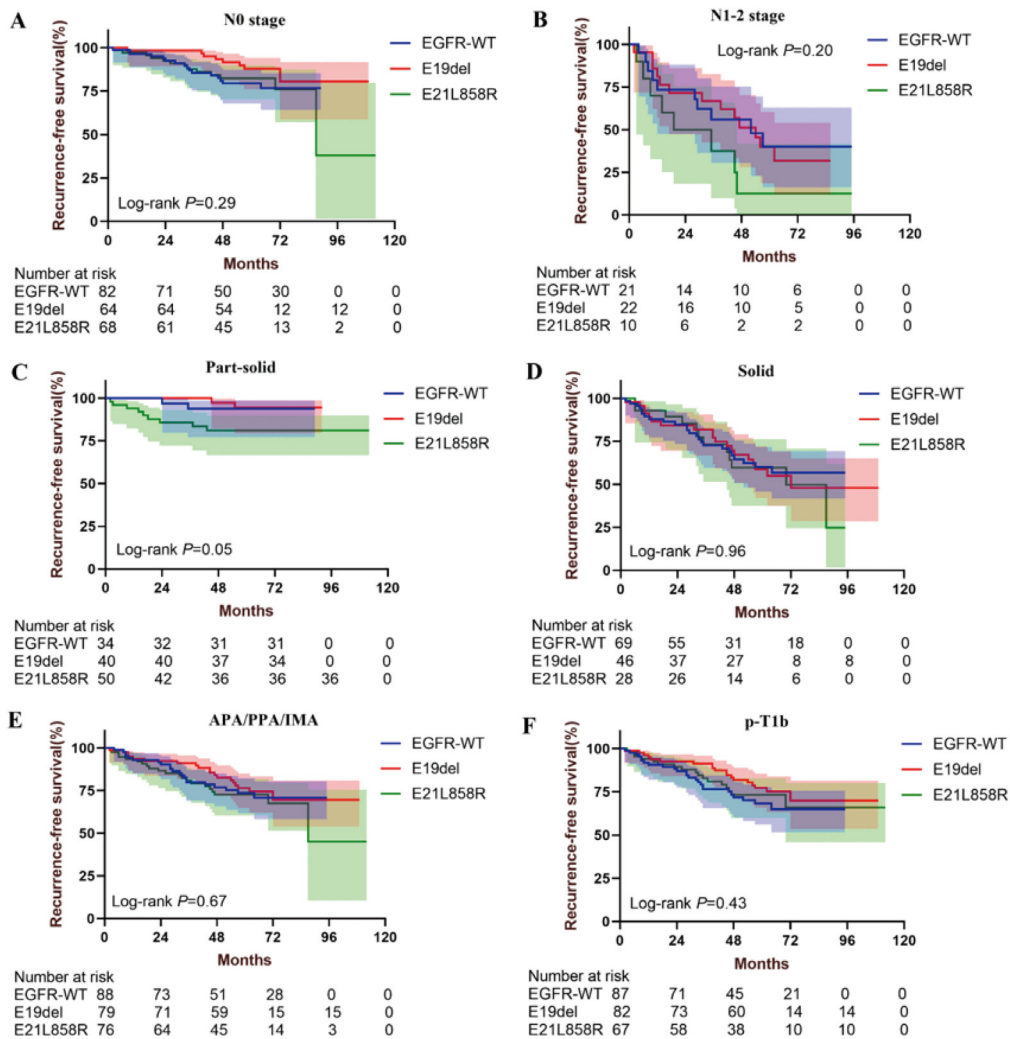


Figure S2 EGFR mutation types could not predict the recurrence-free survival in patients with different subgroups of pT1a and pT1b invasive lung adenocarcinoma after excluding LPA and puro GGO. EGFR, epidermal growth factor receptor; LPA, lepidic pattern-predominant adenocarcinoma; GGO, pure ground-glass opacity.