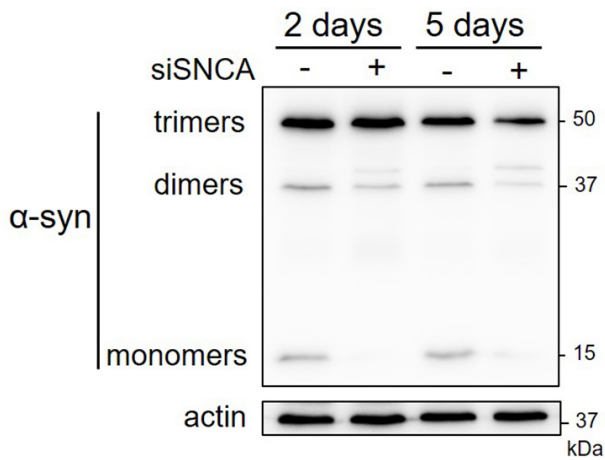
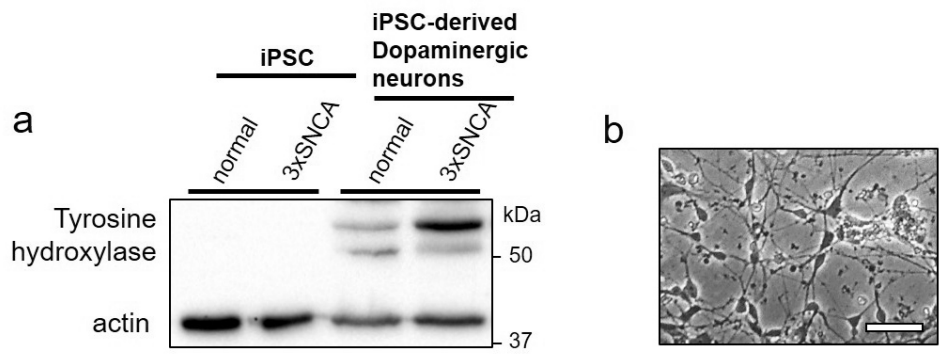


Supplemental Fig. 1. Validation of screening cell lines using CRISPRi. Normalized RLU of untransfected cells (control) or cells transfected with a guide RNA positioning the dCAS9-KRAB complex to just downstream of the *SNCA* transcriptional start site (*SNCA* gRNA). (*= $p < 0.05$, Student's t-test).



Supplemental Fig. 2. Validation of α -Synuclein antibody. HEK-293 cells were transfected with *STAU1* siRNA for 2 or 5 days and α -synuclein was detected using α -synuclein antibody. Turnover of aggregated α -synuclein (trimers) was observed for the 5 day timepoint.



Supplemental Fig. 3. Generation of iPSC-derived dopaminergic neurons. (a) Western blot for tyrosine hydroxylase in extracts from iPSCs and iPSC-derived dopaminergic neurons. (b) Phase contrast image of iPSC-derived dopaminergic neurons. Scale bar, 50 μm.