

SUPPLEMENTAL MATERIAL

Table S1. Characteristics of patients with ischemic stroke and healthy controls (PBMC).

	Patients n=24	Controls n=33	p
Age, years	67.3±11.4	66.6±6.3	0.78
Sex male, % (n)*	66.7 (16)	66.7 (22)	1.00
Smokers, % (n)*	25 (6)	-	
Diabetes, % (n)*	12.5 (3)	-	
Hypertension, % (n)*	70.9 (17)	-	
Anti-platelet treatment, % (n)*	79.2 (19)	-	
Statin treatment, % (n)*	70.8 (17)	-	
Leukocyte count, 10 ⁹ /L	8.4±1.8	5.8±1.2	0.084
Platelets, 10 ⁹ /L	234±107	256±61	0.332
CRP, mg/L	8.1±13.6	2.3±2.7	0.025
Total cholesterol, mmol/L	4.3±1.6	6.0±1.1	<0.001
LDL, mmol/L	2.6±1.0	3.8±0.9	<0.001
TG, mmol/L	1.4±0.7	1.4 ±1.0	0.950
HDL, mmol/L	1.3 ±0.4	1.7±0.5	0.002
Creatinin, µmol/L	82.4±27.9	72.7±11.7	0.311
HbA1c, %	6.1±0.9	5.7±0.3	0.009

The values are given as mean (±SD) or * percentage (number).

CRP= high sensitivity C-reactive protein, LDL= low density lipoprotein, HDL= high density lipoprotein, HbA1c= Haemoglobin A1c.

Table S2. primer sequences used in RT-qPCR.

primer	sequence
hEndoV (F)	TTCCCTGAGCTCGAGGTGGTGT
hENDO V (R)	CCATCCACAAGAAGGACCTGGG
hCD45 (F)	CCCCATGAACGTTACCATTTG
hCD45 (R)	GTCTCCATTGTGAAAATAGGCCTT
hADARp150 (F)	GCCGCCCTTTGAGAACTCT
hADARp150 (R)	TGAGCATAGCAAGTGGAGATACC
hCD47 (F)	AGAAGGTGAAACGATCATCGAGC
hCD47 (R)	CTCATCCATACCACCGGATCT
hbeta-act (F)	AGGCACCAGGGCGTGAT
Hbeta-act (R)	TCGTCCCAGTTGGTGACGAT
Genotyping Primers	
ApoE (F)	GCCTAGCCGAGGGAGAGCCG
ApoE (R)	TGTGACTTGGGAGCTCTGCAGC
ApoE ^{-/-} (R)	GCCGCCCCGACTGCATCT
EndoV (F)	AGCCAGGAGTACAAGGAGCA
EndoV (R)	GCAAGTGGGTGTTGGAGAGT
EndoV ^{-/-} (R)	GGGGAACCTCCTGACTAGGG

Table S3. Subgrouping of carotid patients.

Time from symptom onset	N	Relative <i>EndoV</i> mRNA levels Mean (SD)
>6 mnth	40	0.69 (0.48)
>2 mnth and <6 mnth	24	0.65 (0.28)
> 1 and < 2 mnth	25	0.54 (0.27)
< 1 mnth	74	0.61 (0.31)

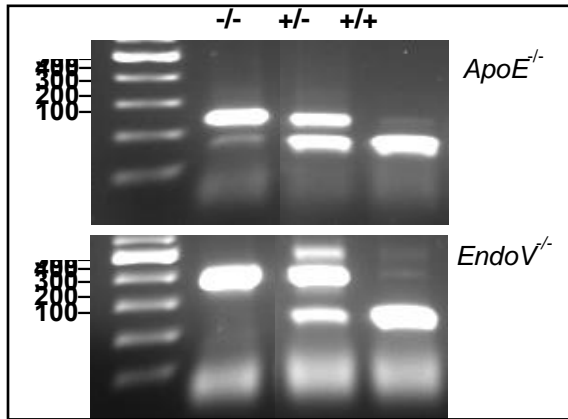
The values are given as mean (\pm SD).

Table S4. Circulating inflammatory markers in *EndoV*^{-/-}*ApoE*^{-/-} compared to *ApoE*^{-/-} mice.

	<i>ApoE</i> ^{-/-} n=4	<i>ApoE</i> ^{-/-} <i>EndoV</i> ^{-/-} n=4	P
IFN γ , pg/mL	0.39 \pm 0.39	0.29 \pm 0.13	0.42
IL-10, pg/mL	3.80 \pm 0.74	3.05 \pm 0.62	0.17
IL-4, pg/mL	0.27 \pm 0.19	0.35 \pm 0.30	0.81
IL-5, pg/mL	9.12 \pm 4.37	8.33 \pm 3.79	0.79
CXCL1, pg/mL	66.86 \pm 47.98	53.76 \pm 19.92	0.63
TNF, pg/mL	43.49 \pm 4.49	36.24 \pm 11.71	0.29
Triglyceride, mg/dL	80.03 \pm 13.83	92.37 \pm 29.53	0.48
Cholesterol, mg/dL	728.36 \pm 181.89	720.89 \pm 257.35	0.96

INF=I nterferon, IL= interleukin, CXCL1= C-X-C motif chemokine ligand 1, TNF= tumor necrosis factor.

Figure S1. Genotyping of the *ApoE*^{-/-}*EndoV*^{-/-} mice.



Genotyping of *ApoE*^{-/-}*EndoV*^{-/-} mice by PCR. Expected size are 254 bp for *ApoE*^{-/-}, 155 bp for *ApoE*^{+/+} (upper panel), 400 bp for *EndoV*^{-/-} and 216 for *EndoV*^{+/+} (lower panel).