

SUPPLEMENTAL MATERIAL

Table S1. EKG Breakdown of the Patients with Troponin Elevation.

Total	211	Percentage (%)
ST Elevation	4	1.90
ST/T consistent with ischemia	64	30.33
Normal or Non-specific	124	58.77
Arrhythmias (A.fib/A.flutter)	13	6.16
No EKG	6	2.84

Table S2. Management of Patients with Troponin Elevation.

	Number	Percentage (%)
Cardiology Consulted	125	59.24
Stress Tests	8	3.79
Coronary Angiography	24	11.37
PTCA or PCI	7	3.32
CABG	1	0.47

Table S3. Association of 1-yr Mortality risk in the population with post-op troponin elevation and pre-op risk classification.

1yr Mortality				
	OR	95% CI	Sensitivity	Specificity
Trop High vs Low	3.90	2.44-6.33	0.66	0.67
RCRI High vs Low	1.57	0.97-2.45	0.39	0.71
NSQIP High vs Low	1.43	0.90-2.27	0.42	0.66

Table S4. Association between pre-op risk stratification tools and post-operative troponin elevation.

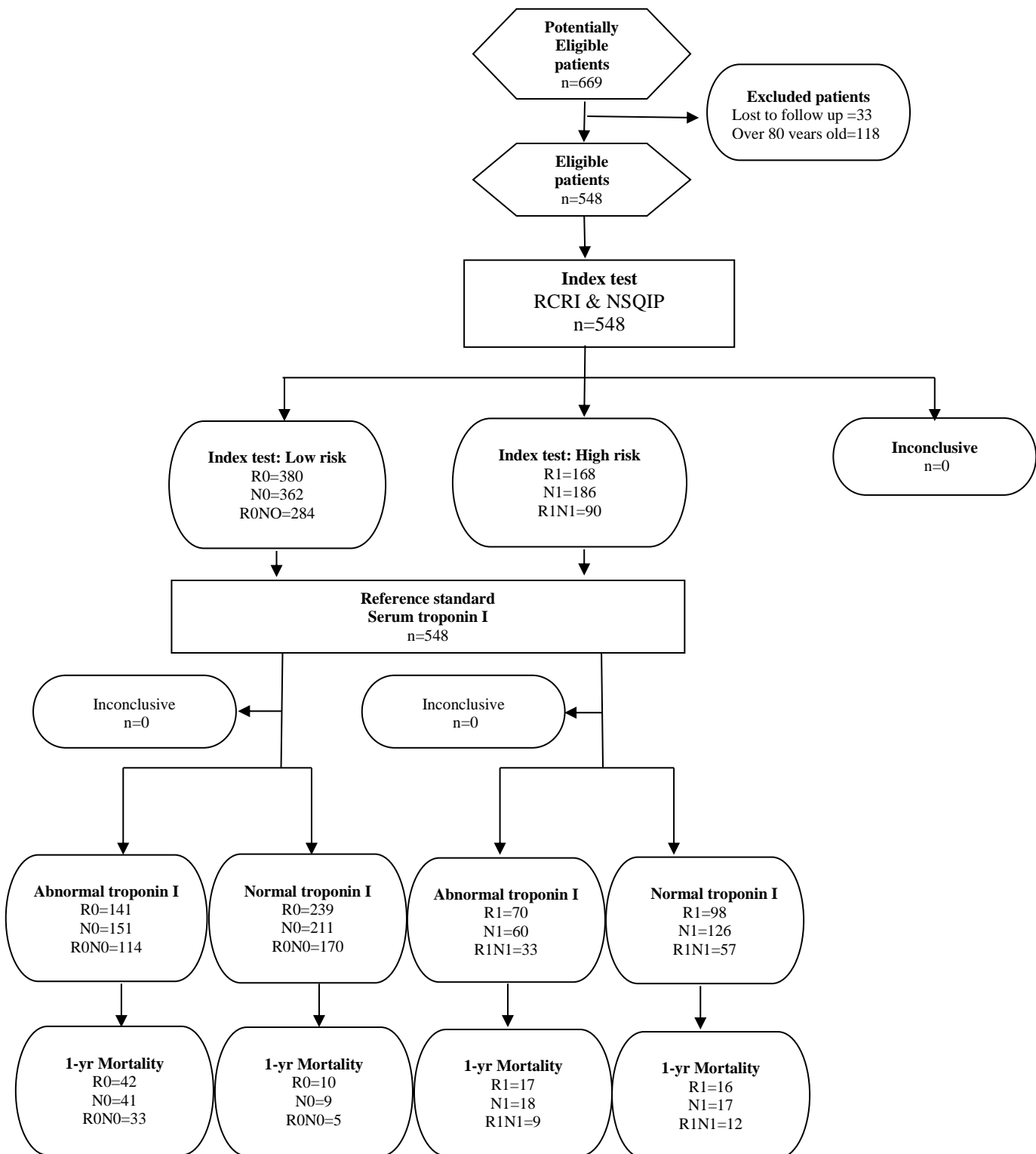
Troponin Elevation				
	OR	95% CI	Sensitivity	Specificity
RCRI High vs low	1.24	0.85-1.79	0.33	0.71
NSQIP High vs low	0.62	0.43-0.9	0.29	0.61

Table S5. 1yr Mortality Risk (Odds Ratio) with MINS vs without at multiple Troponin thresholds.

	OR of Mortality with MINS vs without		
	<i>1x Upper Limit</i>	<i>2x Upper Limit</i>	<i>3x Upper Limit</i>
RO	6.18 (95% CI: 2.99-12.76)	7.55 (95% CI: 3.98 -15.22)	4.64 (95% CI: 2.74-7.85)
NO	7.17 (95% CI: 3.13-16.41)	6.67 (95% CI: 3.40-14.12)	4.76 (95% CI: 2.71-8.37)
RONO	9.12 (95% CI: 3.32-25.03)	9.55 (95% CI: 4.27-24.38)	5.56 (95% CI: 2.89-10.69)

RO: RCRI Low-Risk, NO: NSQIP Low-Risk, RONO: Both RCRI and NSQIP Low-Risk

Figure S1. STARD flow diagram for the study.



R0=RCRI Low-Risk, R1: RCRI High-Risk, N0: NSQIP Low-Risk, N1: NSQIP High-Risk, R0N0: Both Low-Risk, R1N1: Both High-Risk.

Source: <https://www.equator-network.org/reporting-guidelines/stard/>