

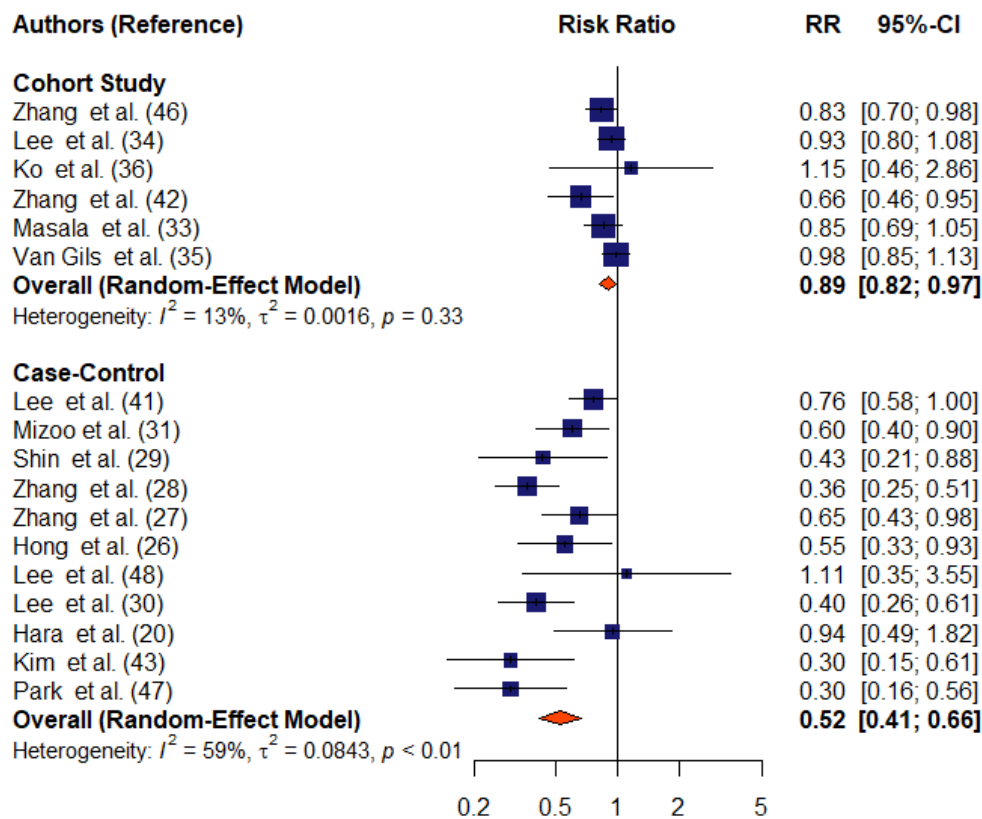
Supplementary Figures

Higher Mushroom Consumption is Associated with Lower Risk of Cancer: A Systematic Review and Meta-Analysis of Observational Studies

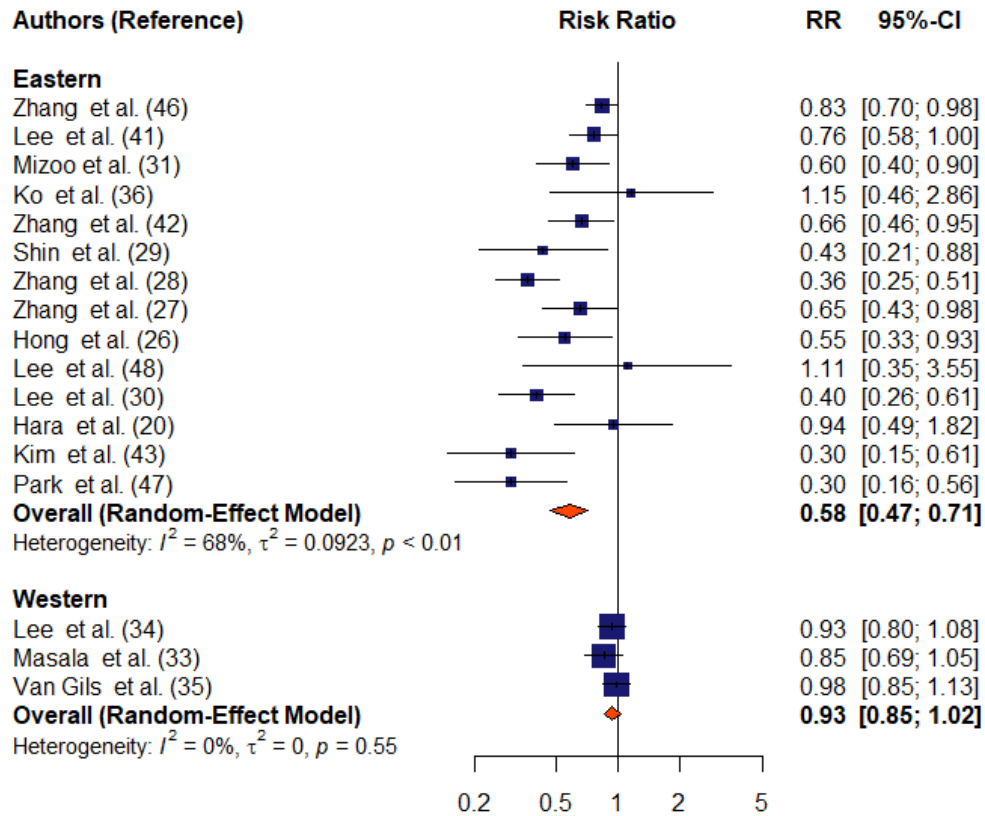
Djibril M. Ba, Paddy Ssentongo, Robert B. Beelman, Joshua Muscat, Xiang Gao, John P. Richie, Jr.

Contents:

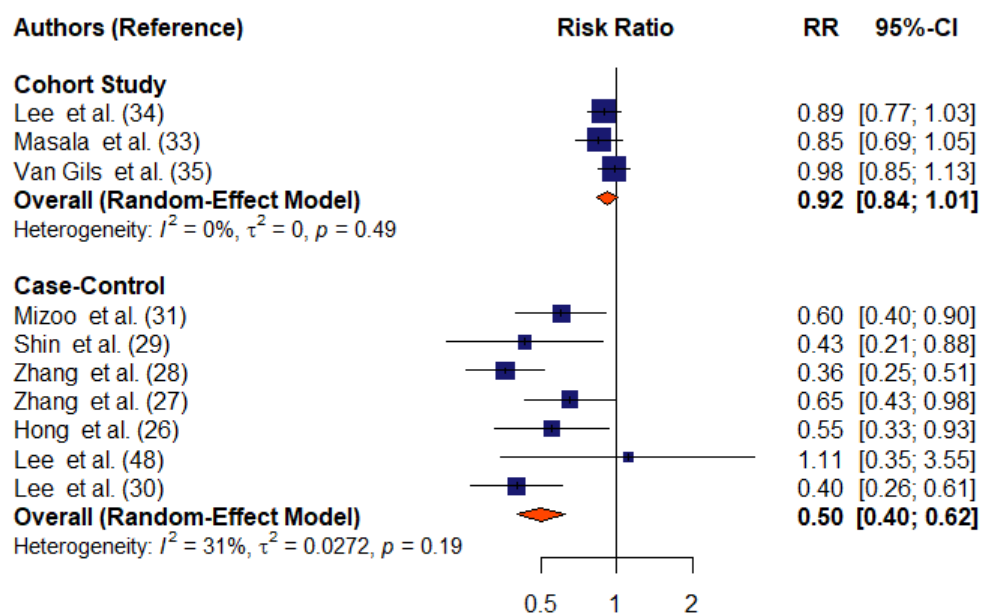
- Supplementary Figure 1. Forest plot of mushroom consumption (highest vs lowest category) and cancer risk by study design.
- Supplementary Figure 2. Forest plot of mushroom consumption (highest vs lowest category) and cancer risk by regions.
- Supplementary Figure 3. Forest plot of mushroom consumption (highest vs lowest category) and site-specific breast cancer risk.
- Supplementary Figure 4. Influence analysis of mushroom consumption (highest vs lowest category) and cancer risk.



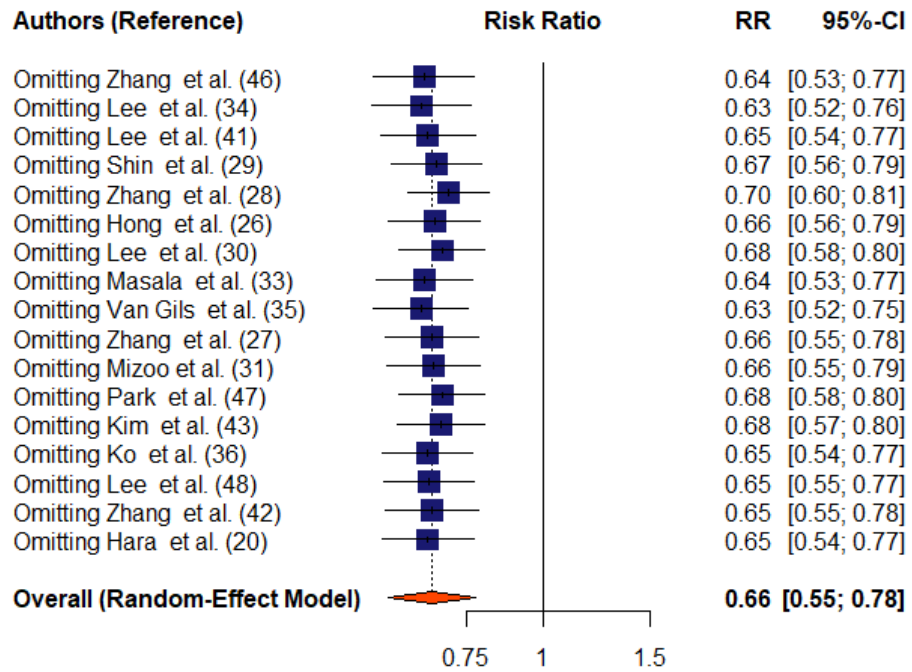
Supplemental Figure 1. Forest plot of mushroom consumption (highest vs lowest category) and cancer risk by study design. The square represents the point estimate of each study and the size is proportional to its weight in the meta-analysis. The horizontal line through the square represents its 95% CI. The diamond represents the pooled risk ratio (RR) of the meta-analysis.



Supplemental Figure 2. Forest plot of mushroom consumption (highest vs lowest category) and cancer risk by regions. The square represents the point estimate of each study and the size is proportional to its weight in the meta-analysis. The horizontal line through the square represents its 95% CI. The diamond represents the pooled risk ratio (RR) of the meta-analysis.



Supplemental Figure 3. Forest plot of mushroom consumption (highest vs lowest category) and site-specific breast cancer risk. The square represents the point estimate of each study and the size is proportional to its weight in the meta-analysis. The horizontal line through the square represents its 95% CI. The diamond represents the pooled risk ratio (RR) of the meta-analysis.



Supplemental Figure 4. Influence analysis of mushroom consumption (highest vs lowest category) and cancer risk.