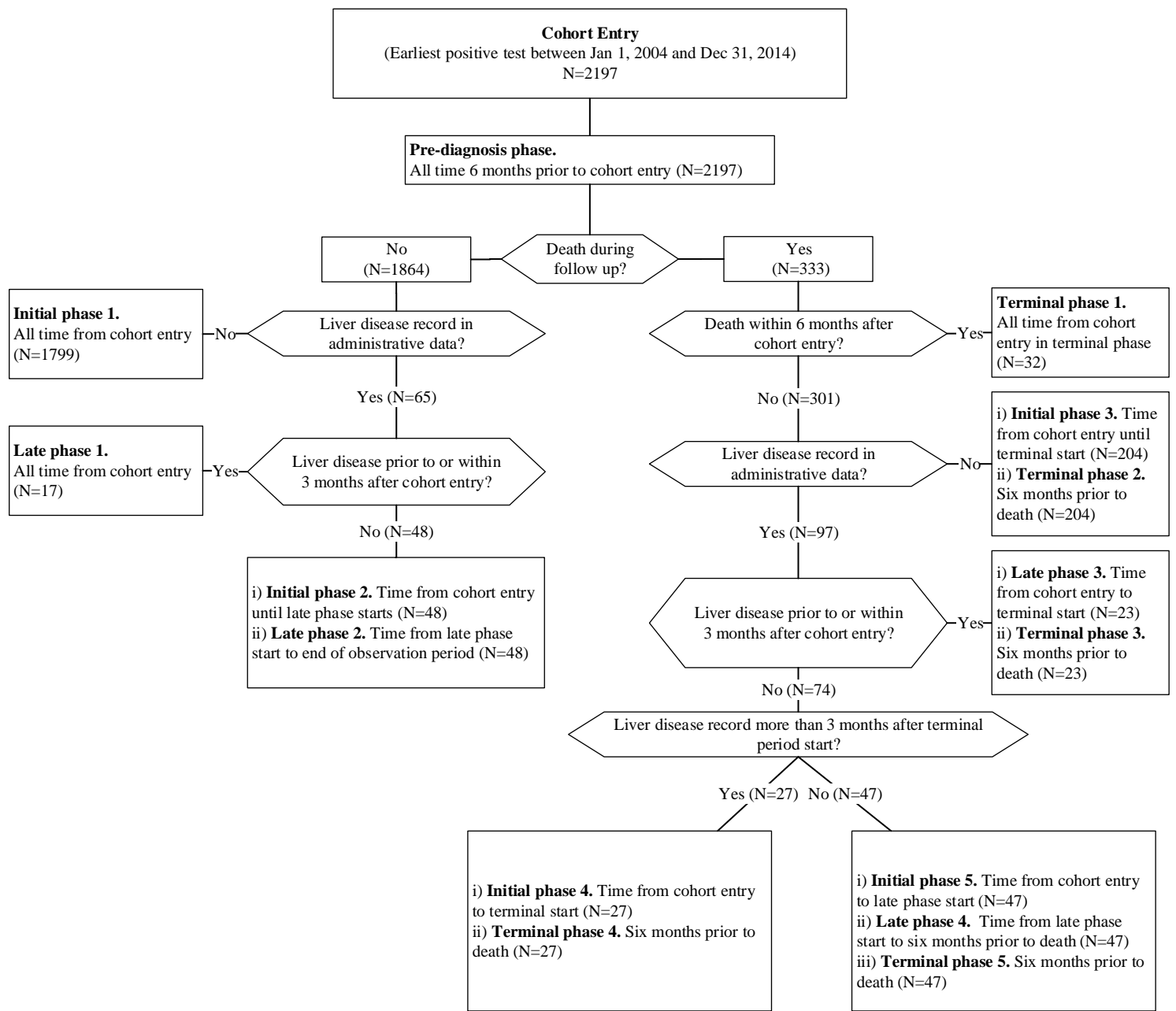


Appendix 4. Phase allocation and case-control matching outcomes

Liver disease constituted the earliest record of hepatocellular carcinoma, decompensated cirrhosis, or liver transplant. *Only those in each pool with information regarding whether the individual resided within or outside a First Nations community at the respective matching dates were included.



Pre-diagnosis phase count:
All: 2197
Total prior to matching: 2197
Total after matching: 2,096*

Pre-diagnosis Controls:
Control Pool: 97,488
Matched Controls: 3,916*

Initial phase count:
Initial phase 1: 1799
Initial phase 2: 48
Initial phase 3: 204
Initial phase 4: 27
Initial phase 5: 47
Total prior to matching: 2125
Total after matching: 2,077*

Initial Phase Controls:
Control Pool: 100,726
Matched Controls: 3,875*

Late phase count:
Late phase 1: 17
Late phase 2: 48
Late phase 3: 23
Late phase 4: 47
Total prior to matching: 135
Total after matching: 130*

Late Phase Controls:
Control Pool: 100,977
Matched Controls: 249*

Terminal phase count:
Terminal phase 1: 32
Terminal phase 2: 204
Terminal phase 3: 23
Terminal phase 4: 27
Terminal phase 5: 47
Total prior to matching: 333
Total after matching: 297*

Terminal Phase Controls:
Control Pool: 7,044
Matched Controls: 545*