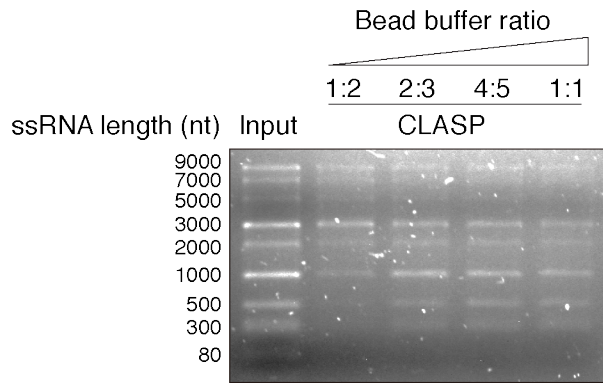


## Supplementary Figure 1



### Supplementary Figure 1. CLASP with RNA marker input.

1% Agarose gel of RNAs pulled down with CLASP performed with the RNA marker (lane 1) as input. Lanes 2-5 demonstrate that increasing the bead buffer ratio (bead buffer : sample buffer) results in purification of lower molecular weight RNAs.